



THE CALDERA TIMES

We ❤️ Island Park

Volume 2 Issue 1

www.TheCalderaTimes.com

January 2024 Edition

Inside This Edition

Crossword	Page 2
Toy Rental Companies	Page 5
Restaurant Hours	Page 8
Fishing Report	Page 10
Local Events	Page 15

Follow us on
Facebook



The Caldera Times
Island Park, Idaho

Read for free at:

www.TheCalderaTimes.com

Have an event coming up? Hiring? Know someone who should be highlighted? Want to write to the editor?
Jen@TheCalderaTimes.com 406.209.0022

The Driftwood Bar and Bistro Drifting Back into our Hearts!



“Driftwood” may be the appropriate name for the bar and bistro located at Driftwaters Resort on Hwy 287 in Montana, near Three Dollar Bridge and the Hwy 87 junction to Island Park. It has “drifted” through names like The Howling Moon, The Sagebrush and The Cove as owners and managers have experimented over the years with different branding and styles of cuisine.

The restaurant has been thriving in recent years, however in early 2023 the restaurant was once again at a crossroads. Rachel, the owner of the Driftwaters Resort, a successful and established RV park and home to the Driftwood Bar & Bistro, was beginning to prepare for retirement and was looking to step back from the restaurant business. She was vacillating between leasing it to some cooks from Big Sky, or perhaps not re-opening it at all.

Enter Sophie and Starkey, who moved to the serene Madison Valley to start a business in summer 2022 and the following spring they learned of the situation with the Driftwood and offered to take the helm.



Sophie, a New Mexico native, and longtime Montana resident since 1995, boasts a diverse background, having owned a painting business, worked in the contracting industry, and pursued studies in English literature at Montana State University. Starkey, originally from Chicago, embarked on a journey 20 years ago, exploring the country,

living in 16 different states, working in the Texas and North Dakota oil fields and acquiring an array of skills and experiences. Their paths converged 10 years ago, marking the commencement of a remarkable personal and professional collaboration.

Living in rural Montana, Starkey found himself yearning for the diverse and flavorful food he missed from home and from his travels to the best hole-in-the-wall restaurants in the country. The absence of home-style comfort food with good spices and authentic recipes left him saying, "I was hungry, all the time!". Sophie, with a penchant for southwestern food and having traveled abroad sampling cuisine from around the world, yearned for quality dining as well.

Determined to fulfill this culinary dream, they undertook a complete remodel of the Driftwood building, focusing heavily on revamping the kitchen to make it a sparkling clean and efficient space. Despite having to reopen with a barebones menu at the end of July, during the peak of the busy season, they faced the challenge head-on. Montana's liquor laws necessitated staying open to maintain their liquor license, even if they weren't fully prepared.

With the completion of their remodeling efforts, Sophie and Starkey, along with their talented chef, have set the stage for a remarkable dining experience at the Driftwood. While facing challenges in hiring additional restaurant staff throughout the summer, something familiar to those in surrounding communities like West Yellowstone and Island Park, the trio is off to an impressive start, and are finally finding their groove as winter sets in.

Crafting an entirely new menu, focused on American and British Pub style comfort foods, they have unique offerings made from scratch, such as scotch eggs and authentic french onion soup. The menu also features tried and true favorites like chicken wings, hand breaded fish and chips, classic caesar salad, steaks and burgers. The chef continually impresses with the nightly specials including a variety of pastas, a heart-warming pot roast dinner and Taco Tuesday paired with handcrafted \$7 margaritas. The culinary offerings go beyond standard bar fare and the dedication and skill of this team are evident in the dining experience they are providing.

The culinary innovation at the Driftwood doesn't stop there—enter their newest addition, a stone-fire pizza oven! Starkey is on a mission

to bring authentic Chicago-style thin crust pizza to the table, complete with homemade sauces that let the toppings shine. As if that's not enough, they're also perfecting a cannoli recipe that promises to be a flavor sensation, soon to grace the menu.

Due to unfortunate circumstances in fall of this year, Sophie and Starkey were on the verge of having to leave the region, in search of a new home, and leave behind the restaurant which they'd worked so hard on. Rachel and Jerry, displaying exceptional kindness, provided them with a place to live and entrusted them with the continued management of the Driftwood. This collaboration has not only revived the establishment but also brought a sense of renewed purpose to all involved.

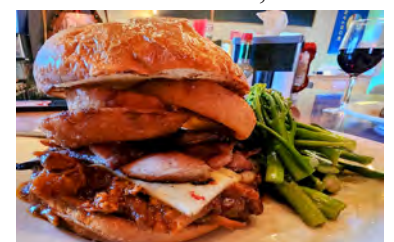
At Thanksgiving, they wanted to say thank you to the community by offering a free, traditional holiday dinner, delighting the locals who attended. For Christmas, they have a set menu that is, once again, traditional and delicious. Dishes include Glazed Honey Ham, Roast Turkey, Apple Stuffing, House Cranberry Sauce, Garlic Mashed Potatoes, along with a soup and dessert. All is included in a single price, adults \$22.50, children 3 and older \$11, and under 3 is free! Dinner will be served from 1pm to 7pm on Christmas Day, the 25th of December. No need to make a reservation, just show up to experience some Christmas cheer!

For New Year's Eve the chef has dreamed up a one-shot special menu that offers NY Steak, Pork Belly, Duck Breast and Chicken Scallopini. Soup, salad and desert are all included with dinner. Descriptions of these choices include phrases like red wine sauce, slow cooked, huckleberry and blackberry chutney, gran marnier orange confit, apple cider cream sauce and chocolate ganache with eggnog custard! Makes my mouth water just typing this. Dinner will be served from 4pm to 10pm, however the drinks and party continue until 1am!

This dynamic couple is committed to offering affordably priced, high-quality food and drinks in an inviting atmosphere that doesn't demand reservations but welcomes guests to become regulars. Recognizing the importance of the local community, encompassing areas like Island Park, Southern Madison Valley, and West Yellowstone, they prioritize consistent hours, reasonable pricing, and top-notch food throughout the year, not just during tourist seasons.

The restaurant can be booked for private gatherings, such as birthday and business parties and small weddings, all of which can be catered on-site with flexible pricing and menu. They are hoping in the future to expand the building to offer more outdoor seating in the summer and a larger space for bands to play. They are already booking live music for the 2024 summer season. Wednesdays and Fridays have already been snatched up by returning guest band, Wyatt Hurts and Les Payne, and they will be adding more entertainment to the roster for summer, as well as the winter months.

The restaurant is open all winter, Tuesday through Friday from 4pm to 10pm, and Saturday and Sunday from 1pm to 10pm, closed on Monday's. The Driftwood Bar and Bistro is looking forward to welcoming the local community as well as winter sports and snowmobile enthusiasts this season in a stunning setting, enveloped by mountains, and lakes, known for its sled trails and outdoor activities. They're all set to offer a cozy haven for those in search of warmth, delicious food, and revitalizing drinks to escape the winter cold.



Wayne and I have a long history in the southern end of the Madison and around Island Park, his family has run cattle on the bench above Hidden Lake for generations. We have always had an affinity for the Driftwood, regardless of the name, and we are delighted to have someone love it back to life! Consider this your personal invitation to swing by, say hello to Sophie and Starkey and savor the delectable new recipes. Tell them I sent you!

Crossword

ACROSS

- 1) Works on, as a bone
- 6) Lapidarist's item
- 9) Sidewinder, for one
- 14) African antelope (Var.)
- 15) In-flight info, for short
- 16) Maxims
- 17) Buzzing
- 18) Big jerk
- 19) Tracks
- 20) Group that disagrees with the majority
- 23) Genuflecting joint
- 24) "Anything ___?"
- 25) Corn holder
- 28) Make blank
- 30) Economist's concern (Abbr.)
- 33) Dispatch boat
- 36) Raccoon's cousin
- 39) Abraham Lincoln was a member of it.
- 42) Kind of bathing suit
- 43) Beyond the fringe
- 44) It's taken for trips
- 45) May 8, 1945
- 48) Vert. counterpart
- 49) Working description
- 51) Get the better of
- 54) Where one is out of character?
- 61) Stevie Wonder's "My Cherie ___"
- 62) ___ de toilette
- 63) Musical drama
- 64) Tablelands
- 65) Major network
- 66) Concerning the kidneys
- 67) Battery's positive pole
- 68) Gymnast's surface
- 69) Overused theme

DOWN

- 1) Pleased
- 2) Legalese for "unless"
- 3) Play things
- 4) Type of broom
- 5) Police car warning
- 6) Go-___ (achiever)
- 7) Decorative sewing case
- 8) Kind of milk (with "of")
- 9) Feeds, as hogs
- 10) Starbursts
- 11) Thickening agent
- 12) Bagpiper's wear
- 13) "Duck soup!"
- 21) Originally named
- 22) Actress Close
- 25) "Deck the Halls," e.g.
- 26) Hot spots
- 27) Man or ostrich, e.g.
- 29) Followed a missile's path
- 30) Brooks of music
- 31) Rocket fuel ingredient, for short
- 32) One carrying on a trade
- 34) Eat in the evening
- 35) Part of a geisha's attire
- 37) U.S. publications grp.
- 38) Ancient cross
- 40) Flood control
- 41) Banana split ingredient
- 46) Make off with
- 47) "___-haw!" (cowboy's cry)
- 49) Group of cheerleaders
- 50) Competitor's share
- 52) Wear with flair
- 53) Become narrow
- 54) Papa's mate
- 55) Prayer's end
- 56) Not too hot
- 57) Four-line rhyme scheme
- 58) Where no one eats their chips?
- 59) Golf hazard
- 60) Harvard rival

BLOW OUT

1	2	3	4	5	6	7	8	9	10	11	12	13	
14					15			16					
17					18			19					
20					21			22					
23					24								
25	26	27			28		29			30	31	32	
33			34	35			36		37	38			
39					40	41							
42								43					
44					45			46	47		48		
49	50							51		52	53		
54	55	56						57			58	59	60
61					62			63					
64					65			66					
67					68			69					



- **Local Agents**
- **Local Office**
- **Best Results**

Call for your
FREE
Market Analysis on your cabin or lots



IDAHO'S REAL ESTATE

Find the Best Cabins & Lots At
www.IdahosRealEstate.net



Rod **JONES**
THE DIFFERENCE BETWEEN LISTED & **SOLD**
(208) 313-0000

Want yours sold?
Call us!



"Idahos' *Jewell*"
(208) 241-7769

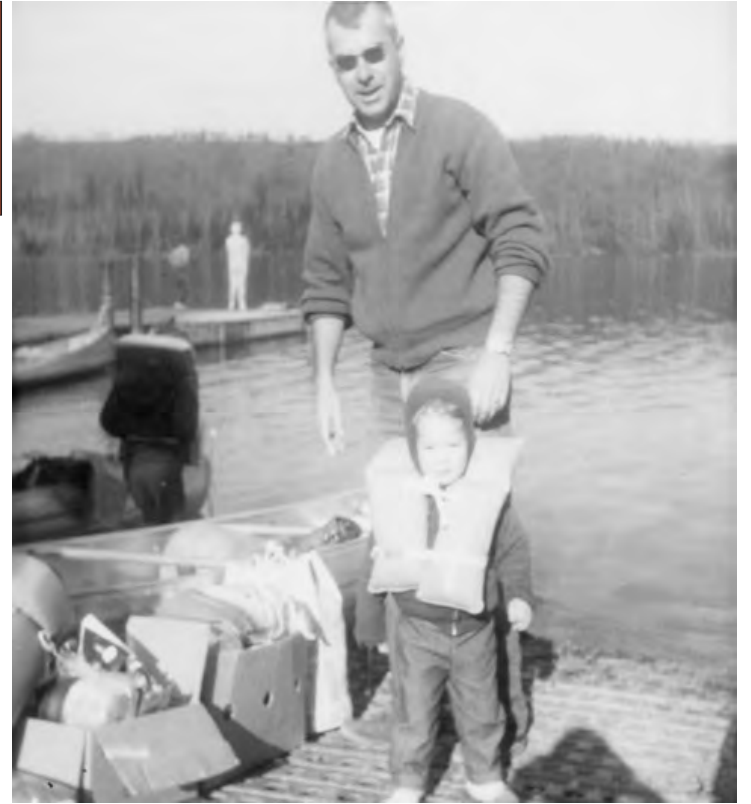
EVERYTHING we touch turns to **SOLD!!**

Yellowstone Ranger Documentary

By Lori Nuss – *Writer and Daughter of a Yellowstone Ranger*

I have the unique perspective of someone who grew up in Yellowstone National Park from my childhood to today, observing how everything worked — from the rangers, maintenance personnel, and concessionaire employees, to the families and their children. I saw how it was all done then, how it is today, and the evolution of it. I grew up the daughter of a Yellowstone ranger within a community of National Park Service employees and their families. My dad, Ranger Dale Nuss, began his career in Yellowstone in the late 1940s and retired from Yellowstone in 1980. Dale was considered a “homesteader,” someone who chooses to remain in one park for an entire career.

At the age of five, Dale began accompanying his dad, Dale R. Nuss, in Yellowstone before the roads in the park were paved. Dale R. was the founder and owner of Camp Trails, a youth camp that operated seasonally from 1928 to 1957 and traveled via horse, station wagons, and canvas tents through the Grand Loop of Yellowstone. The camp’s mission was “for each participant to live at their best, to gain a greater appreciation of nature, learn the joy of achievement, learn to live with others and acquire the spirit of fair play in which to face the tasks of life.”



My own childhood saw endless wilderness adventures — exploring geysers and mud pots, boating on Yellowstone Lake, hiking, skiing or horseback riding into backcountry patrol cabins, fishing, playing in the woods, eating ice cream at the park stores, riding in my dad’s patrol car to a bear or visitor incident, Friday night fish fries, winter skiing and ice skating. School days seemed to bring equal amounts of thrills as I navigated the bison or elk that would lie in our driveway as I left the house for school.

Our Yellowstone homes had a constant theme — a ranger patrol car in the driveway, a park radio in the kitchen transmitting the flurry of all park matters, my dad’s freshly pressed park service uniforms with his flat hat and neatly shined shoes or boots nearby. What was also constant was the pride and honor of the ranger’s duties and what they represented — the mission to protect Yellowstone National Park.



Yellowstone Ranger is a multi-part biographical documentary that takes viewers on a journey through the lives of the people of Yellowstone. More specifically, a time in Yellowstone referred to as the Golden Era – the late 1940s through the early 1980s. As our nation’s first national park, Yellowstone set the footprint and a path and ranger’s standard for other national parks.

Through stunning cinematography, never-before-seen archival materials, unforgettable characters, and colorful narrations, witness a side of Yellowstone that not many have. Part biography, part documentary, Yellowstone Ranger is an exploration of a time in Yellowstone that is quite different from today’s Yellowstone. Why the changes?

For more information and to see Lori’s other projects:

Lori Nuss
The REAL Yellowstone©
406-581-0851
lorinuss@me.com
www.therealyellowstone.com
realyellowstone.my.canva.site/yellowstonerangerdoc
realyellowstone.my.canva.site/realyellowstonependletonblanket

Island Park’s Newest Little Souvenir Shop With The Biggest Heart

Ready to take home your unique souvenir or gift from your visit to Island Park? The brand new Island Park Souvenir and Gift Shop is open! Located at 3519 Yale-Kilgore Road, our littlest shop with the biggest heart offers a wide range of specialty and on-of-a-kind items to commemorate the memories you make in our beautiful area.

Whether it’s a t-shirt, hat, postcard, or trinket, we have something for everyone. Friendly staff will be on hand to help you find the perfect gift or keepsake to bring home.

Why wait? Come see us online only for now, at www.IslandParkSouvenirs.com, and take home your piece of Island Park. Can’t wait to see you!



Excavation - Plumbing - Utilities
Gravel - Roadbase

208-223-2382
flintmccloudconstruction@gmail.com

Island Park Chamber of Commerce

Follow us on facebook for more details
MANY events listed are free of charge

Wild West WinterFest 2024
Raffle for a 2024 Youth 120 Ski Doo~ tickets can be purchased at *Island Park Adventures \$25 each or 5 for \$100. Only 300 tickets will be sold



Events FRIDAY NIGHT JANUARY 12

- 1 Kick Off-Group Sled Ride-Opening Ceremonies @ City Office**
Winner for best decorated Sled OR Side X Side AND grand marshals will be announced. Starts at 6 pm. Leave at 6:15 for ride.
- 2 Fireworks AND Live Band @ TroutHunter**
Fireworks about 7:30. Contact Peter 360-771-6091

Events SATURDAY JANUARY 13

- 3 Horse Drawn Sleigh Rides, Snow Art Contest, & more @ The Pines**
Free rides by Dry Ridge Outfitters (tips appreciated). Fun starts at 11 am. Contact 208-558-0192
- 4 Soup Cook off & Raffle at The Repair Shop (GREAT prizes)**
Raffle includes an Xbox and Klim gear raffle at 2PM. Soup Cook off 11-2. Contact 208-390-8303
- 4 Hot Dogs & Brats @ Elk Creek Station**
11 am until sold out. Food from 11-3. Contact 208-558-7571
- 5 LARGE Tic Tac Toe game & Hot Cocoa Bar @ Last Chance Laundry**
Located in Last Chance, 3372 Hwy 20. Games from 1-3. Contact 208-220-2683
- 6 Snow Coach Ride/Caldera Tours @ N Big Springs Loop Road**
Meet on N Big Springs Loop parking lot 1.5 miles off hwy 20. Rides from 9-2. Contact John 406-570-3723
- 7 Food, Fun and Live Music @ Shotgun Bar**
Event will be outdoors. Tacos by Belen and music by N8Solo & Shawn Barnby. Food and drinks 1-4. Contact Katie 208-226-4701
- 8 Vintage Sled Show & Parts Sale @ Lakeside Lodge**
Winners announced at 3:00. Sled Show 10-1. Contact 208-558-9770
- 9 Cappuccino, Hot Cocoa and Warm Cookies @ Sawtelle Mt Resort**
Available from 10-3. Contact 208-558-9366
- 10 Bingo Game Night @ Springhill Suites Marriott**
(must be 21 to enter) Must purchase Bingo cards at the door \$30 for 1 pack or \$40 for 2. Gaming from 6-9. Contact Patty 208-860-4846
- 11 120 SKI DOO Raffle @ Island Park Adventures now thru Jan 11th**
*Contact the IP Chamber for other ticket purchase options 208-558-7755. Tickets @IPA until Jan 11

Events Map Wild West WinterFest 2024 January 12th & 13th

Location Legend

- 1 Kick Off - Group Sled Ride - Opening Ceremonies - Grand Marshals (Fri)
- 1 Best Decorated Sled or Side X Side winner @ IP City Office Parking Lot (Fri)
- 2 Fireworks/Band @ TroutHunter (Fri)
- 3 Horse Drawn Sleigh Rides, Snow Art and more @ The Pines (Sat)
- 4 Soup Cook off and Raffles w/Outback Realty @ The Repair Shop
- 4 Hot Dogs and Brats @ Elk Creek Station (Sat)
- 5 LARGE Tic Tac Toe game and Cocoa Bar @ Last chance Laundry (Sat)
- 6 Snow Coach Ride/Caldera Tours @ North Big Springs Loop Road (Sat)
- 7 Food, Fun and Live Music @ Shotgun Bar (Sat)
- 8 Vintage Sled Show & Parts Sale @ Lakeside Lodge (Sat)
- 9 Cappuccino, hot cocoa and warm cookies @ Sawtelle Mt Resort (Sat)
- 10 "BINGO" Game Night @ Springhill Suites by Marriott (Sat Night) adults only
- 11 Raffle tickets NEW 120 Youth Ski Doo @ IP Adventures Dec 14th thru Jan 11th



Christie Cameron
Year Round Local Realtor
208-351-0816
Christiecameron7@gmail.com
Associate Broker



4135 Sawtelle Peak Road,
Island Park, Idaho 83429



Welling Rental
3 bedroom - 2 bath
1 acre - water access
\$749,000



Red Rock Rd
47 acres - Borders Forest Service - near Henry's Lk
\$1,250,000



Macks Inn
Water, power, sewer, well house, bunkhouse, 3RV hookups
\$299,000



Last Chance Rental
5.46 acres - 4 bedroom suites, 5 bath
\$1,350,000



Maryville
.45 of an acre, shop and single wide, corner lot
\$159,000



Shotgun Lot
Camper lot
Community Water
\$150,000



American Falls Car Wash
3 bays - cash business
call for more information
\$689,000



Commercial
1.8 acre lot in Marysville/ Ashton has a big shop
\$289,000

LAKESIDE RENTALS

LYNX **208-558-9770** **ski-doo**

can-am **SEA-DOO**

Equipment Rental Island Park

Lakeside Lodge

3857 Lakeside Lodge 208.558.9770

2023-2024 Winter Season Sled Rentals
Beginning December 15th
As weather allows

Ski-Doo Summit X 850 165 Turbo	\$420
Lynx Shredder 850 4100 Turbo	\$420
Ski-Doo Summit 860 165 / 154	\$299
Lynx Shredder 850 3900	\$299
*Ski-Doo Summit 600 154	\$269
*Ski-Doo BackCountry	\$249
Ski-Doo Expedition Sport 2up	\$229



Winter Clothing available to rent
*Can be converted to 2 seater upon reservation request.

Island Park Adventures

3342 N Hwy 20 208.558.7581

Starting December 15th
As weather allows

Expedition Sport 600 (2UP)	\$229
Summit SP 600	\$269
Summit SP 850	\$319

Winter Clothing available to rent

High Mountain Adventures

4141 Sawtelle Peak Rd 208.558.9572

Beginning December 15th
As weather allows

650 Switchback	\$249
650 Pro	\$249
850 Khaos	\$299
Full Snowmobile gear	\$ 35

Recreation Maps



Scan to download the Avenza Map App. Create an account, it's free. Find the Island Park Motorized Recreation Map, both North and South for all of the Island Park area. The also have a Caribou-Targhee National Forest Ashton-Island Park Ranger Districts Winter Recreation for a small fee. Find your trails and enjoy yourself. Please, don't forget, cell coverage here is difficult in most areas, don't count on it for your navigation. Use a paper map, or download your map to be sure you can use it.

Bingo Night

February 17th, 2024 6p.m.
Lakeside Lodge

Join us for a night of fun, Great prizes & Live Auction!



ISLAND PARK, IDAHO

If you use trails in Island Park summer and/or winter, Join our Club! email us at **targheetrailridersislandpark@gmail.com** and Find us on Facebook

Funds will be used towards improving trail systems in Island Park, Idaho

Snowmobiling Etiquette Ride with Respect!

Snowmobiling season is upon us! I thought it might be wise to brush up on some laws, and some suggestions, particularly for those coming in from out of state.

First up, Idaho defines a snowmobile as any self-propelled vehicle under 2,000 pounds unladen gross weight, designed primarily for travel on snow or ice or over natural terrain, that may be steered by tracks, skis, or runners. (A tracked ATV or UTV meets the definition of a snowmobile).

Both Montana and Idaho require a state sticker to ride on the trails, and they are different for each state. Be prepared if you plan to ride to West Yellowstone from here and purchase both tickets. In Montana you can purchase your non-resident \$35 sticker here: ols.fwp.mt.gov/. In Idaho, you can purchase your non-resident \$59.50 or resident \$45.50 sticker here: idahostateparks.reserveamerica.com/purchaseprivilege.page?_PageF

In Island Park, you can also purchase them locally at Sam Patch Grocery. The sticker should be located on the snowmobile in a completely visible location and maintained in a legible condition.



The generated funds from sales of stickers goes directly back to maintain the snowmobile trails in both states. Grooming, parking lot plowing, signage, and clearing groomed trails are all paid for with this program. The state of Idaho also offers avalanche and new rider classes with a portion of



We love this sport! So, as you are riding, remember to be good ambassadors, ride ethically and safely so our sport remains. Remember to get permission if you are riding on private property, otherwise, don't ride it. This lack of respect is one of the biggest complaints from non-snowmobilers in our area..



Some other safety reminders: Always ride in control and within your abilities, stay to the right side of the trails and at a speed prudent on the trails, wear appropriate safety gear, only carry a passenger if your sled is designed to do so, tell someone where you are going, check the avalanche warnings and if you are riding in these areas, make sure you have beacons and Avi packs! The website for checking is here: mtavalanche.com/forecast

Respect the trails and the landscape when you are riding. If there is not enough snow, you risk damaging both your sled and the landscape. Lend a helping hand when you find someone in distress. Do not harass wildlife, or those using the trails in another manner, like skiing, snowshoeing, or ice anglers. And don't ride under the influence of alcohol.

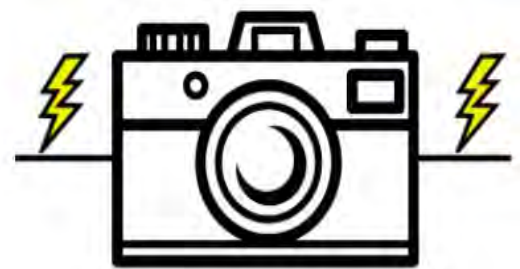
Your actions are the actions the public judges all other snowmobilers by. Please ride accordingly!

Lighting of the Lodge

This years lighting of the lodge was a phenomenal success, as usual! Santa, Elsa, The Grinch and Company, and some great elves all were present to wish the kids a great holiday season with sleigh rides, train rides, fireworks, and a goody bag. What a great annual event to kick off the holiday season, thank you Lakeside Lodge!



IP Optics LLC
est. 2023



TROY ERICSON

Call/Text
208.965.1477

IPOpticsLLC@gmail.com

REAL ESTATE/SHORT TERM RENTALS

**3D Tours &
Photography**



Christi Spinner

kw KELLER WILLIAMS REALTY EAST IDAHO

208-604-2153

Serving Island Park & All of South East Idaho



5085 Taylor Mountain Luxury living with rustic charm new build in Centennial Shores. Gated waterfront community, fully furnished & turn key. This cabin boasts 360 Lake & Mountain views, 5 bedrooms, 5.5 bathrooms (2 masters), fully landscaped yard front& back, granite throughout, custom cabinetry heated bath floors, forced air heat & AC, huge shop w/full apartment above. Very short walk to one of 3 private Island Park Reservoir accesses. Year around access.
MLS#2158106 \$1,975,000



5085 Trumpeter Stunning cabin in a secluded and quiet lake front subdivision on Henry's Lake. Very successful vacation rental, fully furnished & sold "Turnkey". Take in the most beautiful lake, mountain, & sunset views, perched on a manicured corner lot, beautifully landscaped, firepit area, room for RV & huge deck wrapping the home. Large open kitchen, dining and living room for gathering & entertaining, attached heated garage for all the toys. World renowned fishing.
MLS#2157924 \$1,375,000



3425 Kestrel Stunning 5 bedroom 5 bath home in Centennial Shores lakefront, gated community on 2.09 AC of pure serenity. Astonishing lake and mountain views from front and back decks as well as every room in the home. Multiple open space gathering areas with vaulted ceilings, 2 master suites, granite throughout and tasteful finishes with quality materials such as Anderson windows. Propane forced air furnace and central AC, cedar ceiling, double sided fireplace. Allows short term rentals and has year around access. Only 45 minutes to Yellowstone Nation Parks west gate entrance. Subdivision HOA includes 2 private boat docks and launch, marina an beach for Island Park Reservoir.
MLS#2162233 \$1,550,000



4216 Shoshone VACATION RENTAL comes "Turn Key" with all furnishings! True log home in Island Park Village Resort & Golf Course. Beautiful cabin, offers a cozy fireplace, kitchen with great counter space & open flow dining room & living room for gathering. Vaulted ceilings, open loft with wet bar and master en suite. Downstairs game room with walk out basement. Perfect location for year around access.
MLS#2157474 \$699,000



3760 Cove Ct Beautiful **WATERFRONT LOT** in gated Centennial Shores Subdivision. Outstanding Centennial Mountain, Island Park Reservoir, and unobstructed sunrise and sunset views. Allows for Vacation Rentals & Guest House in Addition to Main House. One of the last remaining!
MLS#2153167 \$849,000



1777 12th St, Idaho Falls Charming, Cute, Cozy, Starter Home w/ ALL MAIN LEVEL LIVING. Centrally Located Near Many Amenities & Conveniences. This Home has 3 Bedrooms, 1 Bath, Off Street Parking Plus one Car Garage, Fenced Back Yard, Gas Forced Air Heat, Maintenance Free Metal Siding, Metal Roof & Updated Refrigerator. Home is Currently an Income/Rental Property.
MLS#162467 \$239,000



4117 Beaver Springs Rd Perfect Gathering Place! Wooded lot w/ Soaring Pine Trees backs up to Caribou National Forrest & Hotel Creek is a Short Walk. Private WELL, SEPTIC & POWER, offers 6 RV slots w/ FULL HOOKUPS. Bully barn, 15x20 Outdoor Kitchen Structure "Shabin" w/ Deck. Easy Year Around Access, ALLOWS SHORT TERM RENTALS or ready for your Dream Cabin to be built or use Recreationally for Private Summer Camp 2021 39ft Palomino River Ranch 5th Wheel can be Included but purchased for increased price.
MLS#2158230 \$288,900



3802 Arange Peak Dr GATED WATERFRONT COMMUNITY! 2 community Boat Launches w/ docks & an acre of manicured park, the South end w/ sandy beach for swim days. Vacation Rentals Allowed. Corner lot.
MLS#2154889 \$239,900

ICE HOUSE CREEK subdivision. Creek Frontage, woods and fantastic views. This subdivision is mostly 5ac + parcels so plenty of elbow room. Year Round Access, Option for Rental Use, Allows Horses, PERC test already done with standard septic approved.



4067 St. Ryan's Way
5.11 Acres \$295,000
MLS#2151065



4059 St. Ryan's Way
6.39 Acres \$387,000
MLS#2152830



910 McKinley Ave, Pocatello This Townhome in Heritage Village is well maintained, cute, clean & MOVE IN READY! Centrally located in Pocatello, walking distance to schools, shopping & many other conveniences. New Forced Air Furnace w/ AC, Newer Refrigerator, Windows, Garbage Disposal, Water Heater & Water Softener. Plenty of storage, & a Storage Shed under Covered back Patio. Community offers common areas w/ Green Grass, Shade Trees, & Park Benches. HOA provides lawn care, snow removal, garbage, water & exterior maintenance. Professionally Cleaned.
MLS#2162231 \$187,900

JACKIE JENSEN-LOCAL, ISLAND PARK REALTOR

LAKE VIEW LOT

Water, Power, Septic, Landscaped, has Rv parking, 3 hydrants, 3-50 amp hook-ups. Use for Rvs or build your dream home.

Goosebay, Henry's Lake

Call: 208-390-8303

3.04 ACRE LOT

Gated Community, only 5 lots in Subdivision heavily treed lot offering privacy and seclusion

The Woods

Call: 208-390-8303

2.5 ACRE LOT

Beautiful views surround this lot wildlife is abundant, easily access Reservoir.

Eagles View

Call: 208-390-8303

.83 ACRE

Beautiful, flat lot, heavily treed, backs Forest service Has a 1 bed 1 bath tiny home storage shed, workshop.

Yale Creek

Call: 208-390-8303

jackiej@myidahomail.com
208-390-8303



OUTBACK REALTY

Caldera Restaurant Days and Hours

Anglers Lodge & Riverfront Restaurant

3363 Old Hwy 191 208.558.9555
Closed for the season
Opening December 22nd
Open Christmas Eve and Christmas Day

The Grill @ The Blue Buffalo Resort

3402 N Hwy 20 208.244.1775
Closed until January 1, 2024

Cafe Sabor

4298 Hwy US-20 208.558.9300
Wednesday - Saturday 11 am - 9 pm
Sunday 12 pm - 8 pm
Closed Monday and Tuesday

The Cafe at Island Park Lodge

4149 N Big Springs Loop Road 385.227.1197
Closed until the snow flies

Connie's Restaraunt

4130 Quakie Lane 208.558.6987
Opening December 26th
Watch Facebook for updated hours

Happy Anglers Cafe

3340 Hwy 20 208.497.9455
Closed for Season
Call or message for baked goods

Lakeside Lodge

3857 Lakeside Lodge Lane 208.558.9770
Daily
Lunch 11 am - 5 pm
Dinner 5 pm - 9 pm
Bar 10 am - Close

Meadow Creek Lodge

Meadow Creek Road 208.351.2787
Open December 18th - 23rd
Closed 24th and 25th
Reopen for season and regular hours December 26th

The Parlor at Mack's Inn

4169 N Hwy 20 208.558.2450
Tuesday - Saturday 11 am - 9 pm

Pond's Lodge

3757 Hwy 20 208.558.7221
Sunday - Thursday 11 am - 9 pm
Friday and Saturday 11 am - 10 pm

Springhill Suites Island Park

4292 N Highway 20 208.558.2400
Thursday - Monday 4 pm - 10 pm
Closed Tuesday and Wednesday

Subway

4141 Sawtelle Peak Rd 208.558.9884
Closed for the season

Phillips Lodge- The Lodgepole Grill

3907 Phillips Loop 208.390.8303
8 am - 12 pm
4 pm - 9 pm
Closed on Wednesdays

Trouthunter-Last Chance Bar & Grill

3327 Hwy 20 208.558.8006
Closed for the season

MOUNTAIN LIFE CHARITABLE FOUNDATION



ABOUT US

The Mountain Life Charitable Foundation was formed to give back to the community we all love and build an even better town for future Island Parkers. We are fundraising to establish a fund to support residents facing hardships, and to grow an endowment for a community housing program. We will also host or sponsor events to support other local organizations.



CONTACT US

(208)-860-4846
PO Box 441
Island Park, ID 83429

MountainLifeCharity.org
Info@MountainLifeCharity.org

Invasive plant species (AKA Noxious Weeds Series)

Whitetop

Whitetop. Also known as Heart-podded Hoary Cress, Hoary Cardaria, whiteweed, and peppergrass, but its scientific name is *Lepidium Draba* and *Cardaria Draba* and it is part of the mustard family. From a distance, it can easily be mistaken for native flowering plants such as Yarrow and Desert Buckwheat, but this plant is considered a noxious weed.

It is believed the plant was introduced in the 1800's in alfalfa seed that was contaminated. Whitetop is native to the Mediterranean and western to central Asian areas. It has the ability to grow in a wide range of soil types, between moderately saline to acidic soils with very little moisture, likes the sun, and elevations from 3,300 to 7,900 feet. That definitely fits Island Park!

The upright stalk can grow up to 2 feet in height and develops large arrowhead-shaped, hairy, blue-green into several clusters of white, 4-petaled flowers, giving a white, flat-topped look. The fruit is a heart-shaped seed pod. It is usually the earliest weed to come up in the spring, in May, and can flower twice in a season if the conditions permit.

As with many of these weeds, the root system is extensive and hearty. They are a perennial plant that comes back every year and builds on the same root system. These Rhizomes spread up to 12 feet in the first year, sending up to 400 new shoots or plants, and up to 30 feet in the second and third growing season. A single plant can also produce 1,200 to 4,800 seeds every year, which can remain viable up to 4 years. This makes for easy reproduction and spread.

With large stands, and easy rejuvenation, other native plant species get pushed out. Cattle tend to avoid eating it because the glucosinolates it contains are toxic, but if forced to graze it, they then produce tainted milk. The plant itself is also host to agricultural pests and viruses, making it problematic for other crops.



Despite its tenacity, Whitetop can be effectively controlled. It responds well to herbicides in the spring and later in the fall, but will need to be repeated for 2-3 years to eradicate the root system. The leaves are waxy so the herbicide will need to be mixed with a surfactant to be useful.

Hand digging or pulling would only be a viable option for smaller populations, and early in the season (within 10 days of emergence is suggested). It is imperative to pull the root system, or they will regenerate and emerge again.

Planting competitive legumes, such as alfalfa, can reduce Whitetop, but cultivation needs to be at least 6" deep and repeated to expose and kill the roots before planting a crop. Neither grazing nor burning are recommended, and mowing or weed-whacking at ground level is not a long-term control solution. There is not a successful biocontrol program as of yet.

Future prevention should include detecting and removing new plants early in the season. Refrain from driving vehicles and machinery through infested areas, and clean that machinery after, in order to remove any seeds. Screen your irrigation water before it enters a field and do not graze weed-infested areas to prevent seed transfer.

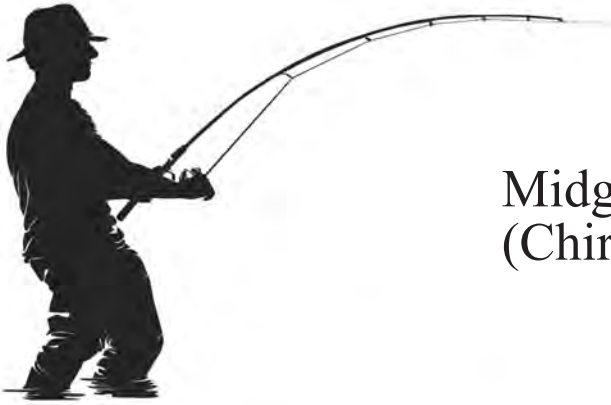
As an interesting note, since it is part of the mustard family, it has the characteristic spicy mustard flavor of arugula or cress. The young leaves and blooms are surprisingly tasty additions to salads, just be sure it has not been sprayed with herbicides!!

Fremont County is dedicated to helping you eradicate noxious weeds on your property. There are grant funds available to assist in paying for chemicals and to treat infestations. They are also available to assist with weed identification and herbicide questions. You can reach out to Bryce Fowler at 208.624.7442 for further questions and information!

Stay vigilant, stay educated, and stay weed free!



Peak Fly Hatch for January



Midge
(Chironomidae)



Characteristics: Adults have two wings, a slender body size and long legs. Pupae have thin elongated, well-segmented abdomens with a short robust thorax. Most species require only a few weeks to mature. Midges have a complete life cycle consisting of an egg, larva, pupa, and adult. The pupa is far more important than the adult or larva. The colors vary widely. The most common colors are olive, brown, tan, gray, and red.

Timing of Hatches: Midges emerge year-round. The pupae emerge in the morning and evening hours. During cool weather they often emerge throughout the day.

Habitat: All water types. Many species prefer slow water rich in aquatic growth.

Comments: Best midge fishing on the rivers is during the late fall, winter and early spring. Midge fishing is especially effective on Hebgen Lake and other lakes in the region from ice-out until early July.

Patterns: Griffith's Gnat, Midge Pupa, Stillborn Midge, Miracle Midge, Suspended Midge, CDC Midge Adult, Tungsten Zebra Midge

Hook Sizes: 12-24

First Street
PLUMBING & HEATING

Voted Best of Best
2020-21-22



Google Over 100 Reviews

www.FirstStreetPlumbingCenter.com

Service • Repair • Installation • Parts • Plumbing
Heating • Water/Sewer Line • Water Heaters
Softeners • Sewage

208-522-6896

345 1st St • Idaho Falls • Since 1942



Get Your Sleds Ready!



January 20th

SNOWMOBILE FUN RUN
ISLAND PARK, IDAHO
MOUNTAIN LIFE CHARITABLE FOUNDATION

IpIdaho.com



Kristen Andelin
Kristen@IpIdaho.com
(208) 360-8850



Tina Crow
Tina@IpIdaho.com
(208) 573-8304



Troy Ericson
Troy@IpIdaho.com
(208) 965-1477



LAKEFRONT
5406 Henrys Lake Rd
MLS # 2153024
\$1,195,000



5+ Acres with a Stream
5219 Hwy 20
MLS # 2154506
\$399,000



LAST CHANCE COMMERCIAL PROPERTY
3783 Blue Heron Ln
MLS # 2155644
\$650,000



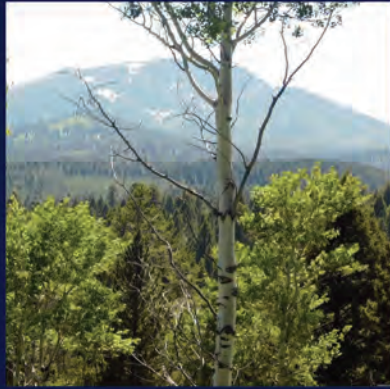
3784 Blue Heron Ln
MLS # 2155638
\$399,000



Lots Available
4930 Alpenglöw Way
MLS # 2152906
\$372,000



ICE HOUSE CREEK SUB
2825 Morning Dew Dr
MLS # 2162050
\$1,465,000



New Subdivision
4907 Shadow Wood
MLS # 2152907
\$544,000



GORGEOUS VIEWS
3337 Eagles View Rd
MLS # 2153126
\$185,000

Looking to buy or sell?

Contact The Mountain Life Team
GoTeam@IpIdaho.com
(208) 534-6775



Shawna Fuller
Shawna@IpIdaho.com
(208) 731-3688



Patty Laritz-Bithell
Patty@IpIdaho.com
(208) 846-4846



Lynette Tingey
Lynette@IpIdaho.com
(208) 851-8474



Historic Phillips Lodge



"THE PINES"
at Island Park



Get a great rate on Cabins!
Stay in a one, two, or three bedroom cabin
Every cabin includes private hot tub
Fireplace and satellite television



The Lodgepole Grill
at The Pines

Open
Full Bar
Daily
8 am – 12 am
4 pm – 9 pm
Closed on Wednesday

Serving Breakfast and dinner
Homemade Soups Everyday
Prime Rib Everyday

Cabins@PinesIslandPark.com

208-558-4379



ASAP SEPTIC PUMPING
208-390-7559

Full time Septic Pumping In Island Park
Tank Locating, Digging and Inspection
for STR and Real Estate Sales Inspection
24 Hour Emergency Services
LOOK FOR THE BIG RED TRUCK
Asapumping.com

Open Year Round

Restaurant
Lunch 11am-5pm
Dinner 5pm-9pm

Tavern
Full Bar w/ Patio Seating
Pool Table
Shuffle Board

Lodging
Cabins
Motel Rooms

C-Store
Cold Beverages
Clothing
Gifts
Miller Ranch Beef

Lakeside Rentals
9am-5pm

Reserve your rental online today!



208-558-9770



UPCOMING EVENTS

Dec 18th - Closed at 4pm
Dec 23rd - Ugly Sweater Party
Dec 23rd - Perfect Chaos 7pm
Dec 24th - Closed at 4pm
Dec 25th - Closed for Christmas
Dec 30th & Dec 31st - Scratch
Dec 31st - New Years Eve Party with fireworks at Midnight!
January 6th - Ice Fishing Derby
Jan. 6th - Perfect Chaos 7pm
Jan 12th & 13th - Aaron Ball Band
Jan. 13th - Vintage Snowmobile Show
Jan 20th - Snowmobile Fun Run
Jan 27th - Scratch 7pm
Feb 2nd & 3rd - Unknown Band
Feb 9th-11th - Hockey Tournament

We Proudly Serve
Idaho Grown
Miller Ranch Beef







SEV-DOO |  can-am |  ski-doo

www.lakesidelodgeandresort.com



The Funnest Fun Run

By Tom Bithell

I've always enjoyed Fun Runs and Poker Runs, whether on motorcycles or snowmobiles. But to be honest, snowmobile Fun Runs are my favorite. Our family has participated in the various Island Park fun and poker runs for the last ten years. They're a great social event, with stops at many places around Island Park. And some people win prizes. Other people, not me.

Typically we get a good sized group of friends and family to go along. There's safety, and fun, in numbers.

We always tend to take more adventurous routes to the different check-points. The Fingers route on Island Park Reservoir is one of the favorites when the snow and visibility are good. Late January 2021 was not one of those times. It had been snowing the past two days and there was over two new feet of snow. Epic powder everywhere!

That morning we had gathered almost 20 people in our posse. Some of the group wanted to take the Fingers down to Last Chance. Others didn't think it was a good idea with poor visibility and deep new snow. I was one of the latter, because I had guided a group the day before and witnessed people struggling in the deep snow. Now a day later, it was deeper yet.

We decided we would split into two groups - those that wanted to brave the Fingers; and those that wanted to take the trails. I volunteered to lead the trail group because I wanted an enjoyable day, not a day



Need an escape from mud season or the winter? Pass Christian, MS might be the spot you want to visit.

Check out JEWLVacations.com to book this beautiful home directly, and come enjoy the heated pool and some southern hospitality!

Want some extra info? Call me, Jen Lower, at 406.209.0022



check-points.

digging people out. Funny enough, my wife was talked into going on the Fingers by some of our friends. They assured her they'd look out for everyone. I warned her it's deep and people are going to get stuck out there.

So off we went down the trail while they headed for the reservoir. Our trail group stopped at the junction between Elk Creek and Ponds to make sure everyone was coming. It was fortunate we shut off our sleds and took a helmet break, which enabled me to hear my phone ringing. It was my wife calling. Now, here is the "I told you so" moment a husband rarely gets. She was stuck. Not on the Fingers, on the reservoir. She said people were getting stuck and now they were spread out and she didn't know where our friends were.

Then, while she was still on the phone, another snowmobiler came to try and help her and they got stuck. Ugh! I told her to hang on and we'd turn around and head to Lakeside for our rescue HQ.

Once at Lakeside we tried calling people from the lost group to figure out where they were and if there were more people needing help. Thankfully there were several friends at Lakeside that are excellent snowmobilers and volunteered to go out and help people.

About thirty minutes later people started trickling into Lakeside from the Fingers and within an hour everyone was safe and accounted for. The group never made it to the end of the Fingers. My buddy JD told me they had to turn back and help stuck sledders all the way back. I sure had great laughs that night. "I told you guys!"

This year's Fun Run will be on January 20th, 2024. Riders can register on the evening of Friday the 19th at Lakeside Lodge (6 - 9 PM); or the day of the event at either Connie's Restaurant or the Lodgepole Grill starting at 10 AM.

The ride will begin at 11 AM and conclude at Lakeside Lodge at 5 PM. The grand prize raffle winner will be drawn at 6PM. The Rally For A Cause live auction will begin immediately after. This year's cause is the Island Park Charter School.



EAST SUMMIT
EXCAVATING

SERVING EAST IDAHO

EXCAVATING, GRADING, SEPTIC

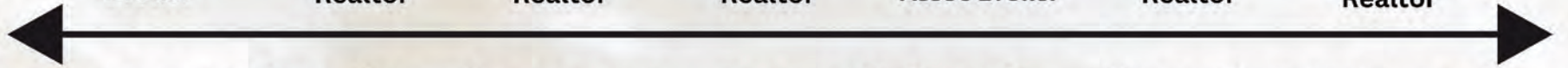
Call or Text for a Free Quote

(208) 569-6017


HAPPY Holidays
OUTBACK REALTY 208.558.9500



Jamie Phillips 208 221 2647 Broker	Jackie Jensen 208 390 8303 Realtor	Riley Hoyle 208 351 6705 Realtor	Monika Boyce 208 240 2717 Realtor	Christie Cameron 208 351 0816 Assoc Broker	Gay Johnson 208 351 5204 Realtor	Gary Dawson 208 351 3054 Realtor
---	---	---	--	---	---	---


www.outbackrealty.com ~ www.islandparkrealestate.com

We welcome Christie Cameron to OutBack Realty!
From all of us at OutBack Realty
HAPPY Holidays!



Shotgun \$899,000
6 bed / 4 baths / 1.93Ac
2 Kitchens. Great Rental



Harris H.S. \$625,000
4 bed / 1 bath / .48 Ac
Great Rental



Ralph T.- \$495,000
3 bed / 1 bath / 1/2 Ac
Rental potential - Garage



Rancho McCrea \$599,900
3 beds / 1 bath
Comm. boat launch



Southshore \$799,900
Waterfront with boat dock
1.45 Acres / Road on lot



Goose Bay - \$249,000
Septic / Water / Power
.41 Acres with water views



Yale Creek \$349,000
Tiny home / 2 RV hookups
.83 Ac / Large trees



Commercial! \$1.2M
1.7 Acres
Boondocks Restaurant



Buy all 5- Listed at \$2.15M
Last Chance - 5 units
Each offer 2 bed / 1 bath
Prices starting at \$479K



Macks Inn \$549,900
2 bed / 2 bath / 1/2 acre
2 sheds / oversized garage



The Repair Shop
Commercial Property
.95 ac / \$2,300,000



Gravel Pit \$750,000
Commercial Property
4.38 Acres

Stonegate \$299,900
3.51 ac building lot
Great year round access

The Woods \$279,000
3.04 ac building lot
Heavily Treed

Eagles View \$169,900
Views all around
2.25 Acres

Fisher Pointe - \$250,000
5.5 Acres
Great Views!

Events this Month



Saturday December 23rd
7 pm - 11 pm
Ugly Sweater Party and
Perfect Chaos
Lakeside Lodge

BANDS
Dec 30: Scratch
All start at 7 pm

EVERY WEDNESDAY STARTING
12/20/23 - 3/6/24
Regular bingo packet 3 cards for 10 games @ \$20
\$2 per card for Blackout
\$2 entry fee. must be 21 to play
Plenty of seating with over 300 seats!
Game room, full bar and restaurant
FOR MORE INFO VISIT West Yellowstone Bingo on Facebook
Yellowstone Beer Company 121 Madison Ave 406-646-7621
<https://yellowstonebeercompany.com>

MARK YOUR CALENDARS!

LAKESIDE LODGE

Annual Ice Fishing Derby
Saturday, January 6th!

Located on the Island Park Reservoir
208-558-9770
www.lakesidelodgeandresort.com



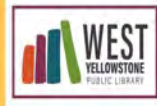
Sunday, December 31st
8 pm - 12 am
New Years Eve Party
With the band Scratch

Lakeside Lodge



Kids N Snow Event
January 13th, 8am to 10pm
Go to Kidsnsnow.org for
event schedule

See Page 4 for
Winterfest
map and
activities!



WEST YELLOWSTONE PUBLIC LIBRARY:

Library Hours:
Tuesdays, Thursdays, and Fridays 10:00 AM - 6:00 PM
Wednesdays 10:00 AM - 8:00 PM
Saturdays 10:00 AM - 2:00 PM
Closed Sundays and Mondays

Free Spanish-to-English Classes:
Beginner Level: Mondays and Fridays at 5:00 PM
Intermediate Level: Mondays and Fridays at 6:00 PM
Lego Club: Tuesdays at 3:15 PM
Pre-K Storytime: Wednesdays at 11:00 AM
Chess Club: Fridays at 4:00 PM

West Yellowstone Public Library
23 Dunraven Street
West Yellowstone, MT 59758
(406) 646-9017
<https://westyellowstonepubliclibrary.org/>



Saturday, Jan 13th
10 am
Vintage Snowmobile Show

Lakeside Lodge



January 20th!

The Mountain Life Charitable Foundation is hosting two events in one day! We will start with the Snowmobile Fun Run at 11 AM and end the evening with the Rally For A Cause live auction!

The ride will begin at 11 AM and conclude at Lakeside in the evening. The Foundation will draw the grand prize raffle winners at 6PM. We will begin the Rally For A Cause live auction immediately after. This year's cause is the Island Park Charter School!

Early Registration: January 19th 6-8 PM at Lakeside

Day of Registration: 10 AM at Connie's Restaurant or Lodgepole Grill

Ride: Start at 11 AM. End by 5 PM at Lakeside

Raffles: Grand Prize and junior raffles at 6PM

Live Auction: 6PM - Rally for A Cause!

WINTER EVENTS 2023-24

Island Park

- November 25
- December 2
- December 7
- December 9
- December 16
- December 16
- December 24
- December 30
- December 31
- January 12-14
- January 6
- January 12 & 13
- January 12
- January 13
- January 13
- January 18
- January 19-20
- January 20
- February 3
- February 9-11
- February 17
- March 16

- Festival of Trees
- Lighting of the Lodge & Fireworks
- Family Movie Night
- Sweet Nikole and the Rag Dolls
- Papa Stitch
- Ugly Sweater Party
- Christmas Eve Service
- Scratch
- New Years Eve w/Fireworks & Music
- Fat Pursuit (Race)
- Ice Fishing Tournament
- Winterfest (IP Chamber)
- Winterfest - Fireworks
- Winterfest - Bingo
- Vintage Snowmobile Show
- Sled Fest - Welcome Social
- Out West Sled Fest
- Snowmobile Fun Run
- Rally for a Cause
- Ice Hockey Tournament
- Targhee Trail Riders Bingo
- Food and Libations

- Springhill Suites - Marriott
- Lakeside Lodge
- Little Church in the Pines
- Lakeside Lodge
- Lakeside Lodge
- Lakeside Lodge
- Little Church in the Pines
- Lakeside Lodge
- Lakeside Lodge
- Sawtelle Mtn Resort (Start)
- Lakeside Lodge
- Various Locations
- Trout Hunter
- Springhill Suites - Marriott
- Lakeside Lodge
- Shotgun Bar
- Sawtelle Mtn Resort+
- Lakeside Lodge
- Lakeside Lodge
- Lakeside Lodge
- Lakeside Lodge

Ashton

- November 21, 22 24 & 25
- December 2, 9, 16, 18-23 & 26-27
- December 2
- December 17 & 22

- Christmas Village
- Spirit of Christmas Parade & Craft Fair
- Christmas Cantata

- Museum of the Henry's Fork
- Pacific & Main (Start)
- Zion Lutheran Church

West Yellowstone

- December 20-March 6
- December 31
- January 6

- Bingo (Every Wednesday)
- New Years Eve Party
- Hebgen Lake Tournament (fishing)
- (West Yellowstone Chamber)

- Yellowstone Beer Co. (YBC)
- Buffalo Bar
- Hebgen Lake

For more details about each event, check out our website at:

IpIdaho.com/events



Looking to buy or sell?
Contact The Mountain Life Team
GoTeam@IpIdaho.com



Festival of Trees: An outstanding Success!

We were so excited to have this event brought back to Island Park, and what an event it turned out to be, it was hugely successful.

The afternoon was filled with Santa, hot chocolate, and cookie decorating for the kids. The Caldera Times sponsored all of the Island Park Charter school children that participated!



The community support for donations was amazing. So many businesses and individuals participated with trees, wreaths, and baskets for the evening auction. It was hard to decide what to bid on! All of them were well done.

The Angel Tree, in support of the Island Park Charter School raised approximately \$1,000. The team is so excited to be able to contribute to the youth of Island Park.

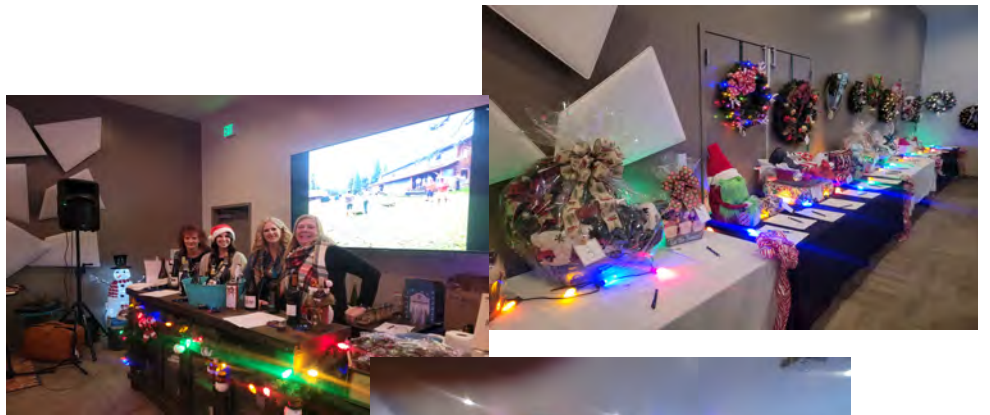
The trees donated for the auction were adorned with meticulous care and attention to detail, presenting a display of festive decorations. There was voting for the favorite tree, which was saved for last in the live auction. Jami and Shiloh Owens with Centennial Excavation took their time and imagination to bring it to life and Andy Zehrung was the winning bid to take it home!



Another \$10,000 was raised from the auctions, both silent and live. So many trees, wreaths, and baskets were donated by members of the community, and the auctioneer, Wayne Lower, did a great job of helping folks open their pocket books for such a worthy cause.

Many thanks to all sponsors, vendors, volunteers, the Marriott, and most of all the attendees. A special thanks to a few volunteers for their time and efforts. Thank you, Laurie Augustin (aka Mother Christmas) & Steve Augustin, for decorating and making the event look so magical! We would also like to thank Jay Bailey, (Santa Clause) for donating his time and face for pictures with the youth of Island Park. So many others were supportive and helpful, and the team is humbled by the generosity of both time and money to make this event the success it was.

The charity staff are working together to determine the specific areas of disbursement for these funds. As with all the Foundation's events, proceeds raised will be used to benefit the Island Park Community. The Foundation is growing a fund to have on hand for supporting neighbors in need, as well as an endowment to support the development of community resources.



The Charity is truly amazed by the amount of support that they received and honored to be a part of such an amazing community. As a community, we are lucky to have them!



Please enjoy the videos of the event! We can't wait until next year.
<https://youtu.be/LCrT18G5XdU> (The short version)
<https://youtu.be/tRbShvfNaeU> (The long version)

Visit their website at www.mountainlifecharity.org to learn more about the charity and the upcoming events.

Their next event is the Snowmobile Fun Run January 20, 2024.



Sponsors for this event were:

- *Connie's Restaurant
- *Wanda Jensen
- *Island Park Chamber of Commerce
- *Caldera Times-Jen Lower
- *Wayne Lower-MC-Auctioneer
- *Laceigh Fuller
- *Integrated Wellness-Melissa Child
- *Compass Lending
- *Alliance Title-Rexburg,
- *Union Home Mortgage-Jeff Hovey
- *Barkey Family
- *ASAP Plumbing
- *Laurie Augustin - Mother Christmas
- *Fall River Electric
- *Lynda Medley
- *R Dream Investment
- *R Dream Investment
- *Suzette Ritchie
- *Monte Ritchie
- *Tasia Ramirez
- *Island Park Souvenirs
- *Yellowstone Fly Shop
- *Parade Rest Ranch
- *Jackie Jensen-Outback Realty
- *L & L Designs-Lora Febres & Lisa Black
- *Valerie Price
- *The Repair Shop
- *Lakeside Lodge
- *Centennial Excavation
- *Shotgun Bar
- *Outback Realty-Jamie Phillips
- *Philly Properties - Halle Phillips
- *Shotgun Bar
- *Outback Realty-Jamie Phillips
- *Philly Properties-Halle Phillips
- *Mountain Life Charitable Foundation
- *Brook Unger and Family
- *IslandParkIT.com - video production
- *Alison Bailey
- *Allyssa Laritz
- *Jay Bailey -Santa
- *The Mountain Life Realty Team
- Andy Zehrung
- Patty Laritz-Bithell
- Shawna Fuller
- Lynette Tingey
- Kristen Andelin
- Tina Crow
- Troy Ericson - the Elf

More Government? Question for May 2024 Auditorium Vote

Idaho has historically been, and continues to be a conservative state. While that doesn't mean we are in agreement over every aspect, generally, we support less government and fewer taxes. That bears repeating, less government and fewer taxes!

When the lawmakers in Idaho created the Auditorium District, it was an effort to encourage communities of MORE than 25,000 in population to form a district. Rep. Dolores Crow, R-Nampa, at the time said it would benefit cities if they were allowed to use the money for tourism and advertising. It was originally intended for the economic benefit of the community.

Unfortunately, as is often the case, the spirit of the law was not translated perfectly into the letter of the law. It is broad, undefined, and leaves significant concern for misinterpretations and misuse. When creating a new Auditorium District, a new governmental agency is created. There are no rules for oversight, or auditing. An affirmative vote gives six board members authority to make any and all decisions regarding the creation and use of the facility and funding, without oversight.

The law does dictate that records be maintained, and board members be bonded with the clerk of court, but does not offer any guidelines or requirements for audits, beyond a standard annual audit. See Idaho State Law Title 67, Chapter 4, Section 67-450B for a complete description of what that entails, but essentially, it requires an independent auditor to review the income, expenses, and budgets of every governmental agency. Those records are also to be made available to any member of the public that requests them.

The audit is primarily aimed at ensuring financial accountability rather than questioning the board's choices regarding funding, building design, use, or budgetary needs. In the context of Island Park, the establishment of this district would grant a six-member board substantial authority over a considerable sum of tax-collected funds without specified guidelines for public input or approval mechanisms.



Considering the lengthy time-lines for similar projects in other areas (11 to 31 years!), it becomes crucial to assess the long-term implications of this district. Questions about the board's composition, potential changes over the years, and the community's ability to support such an endeavor without additional taxation become critical points of concern. This lack of clarity in the law allows for potential shifts in the board's goals and priorities over time, potentially leading to unintended consequences.

The overarching issue lies in creating a new governmental agency without clear checks and balances or a reasonable method for its potential dissolution. Thoughtful consideration must be given to the agency's future outlook, budget, and the community's capacity to sustain it without imposing additional financial burdens. As the community contemplates its decision in May, these questions demand careful research and consideration to ensure a balanced and informed vote. Is an Auditorium District the right way to fund the needs of this community?

Electric
208-351-7058
Electrical Contractor
Serving all of Southeast Idaho

I SAW THAT
CUSTOM CHAINSAW
CARVING
TREE REMOVAL
MISC. CABIN REPAIR
AL PARKS
CALL/TEXT FOR FREE ESTIMATE
208-200-9404



**Welcome to the back side of the mountain
No Reservations Required**

33 Sagebrush Way, Cameron, MT, 59720

Open 6 days a week + Holidays:

Tues-Fri: 4 pm - 10 pm

Sat + Sun: 1 pm - 10 pm

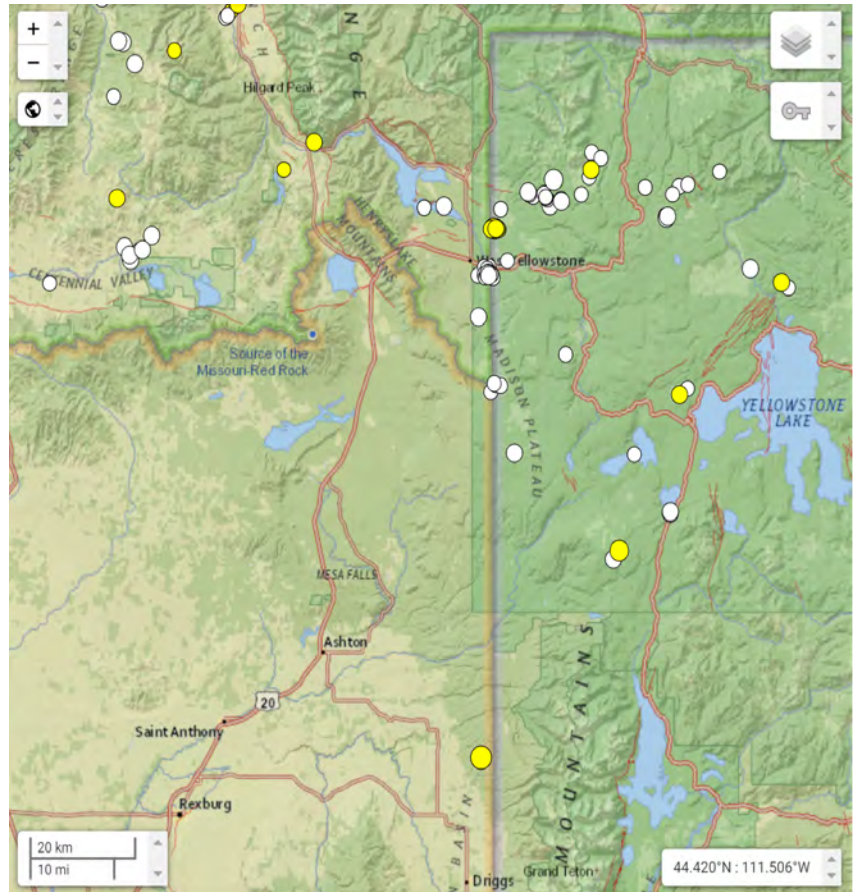
Closed on Mondays

Early opening for sports games
(first come, first serve - customers choice)

Full bar with a diverse menu

Earthquakes: Part of Life Near Yellowstone

The Caldera and its surrounding area is a hot spot for seismic activity. In the last month alone we have experienced 116 minor earthquakes, as evidenced by the map, ranging in magnitude from 3.6 to 1.0. The largest of these was NNE of Tetonia on December 8th, thereafter, two that measured 2.5, one at the Idaho Montana border, and one near Dillon, MT. These are monitored and recorded by USGS and can be found at earthquake.usgs.gov/earthquakes if you are interested in following that. You will have to use the tools in the top right to indicate how many days you would like to see check the box to only see those in the area shown on the left, and then zoom in!



Earthquakes result when internal forces of Earth are out of balance with surface forces, or the movement of plates over hot spots. In Idaho, because we sit on the western edge of the North American plate which collides and slides past 2 oceanic plates on our northwest and southwest boundaries, we are susceptible to both the tectonic and volcanic types. We are also in the fringes of the Yellowstone Hot Spot track (see photo below and definition), which is a zone of seismic activity, another cause of earthquakes in the Caldera. Idaho ranks 5th in the lower 48 states for earthquake hazards!

There have been several major earthquakes in our history. Of the largest are the following:

Aug 17th, 1959 the well-known earthquake that created Quake Lake at Hebgen Lake where 28 lives were lost was a 7.3 magnitude, the largest recorded in the continental US at the time.

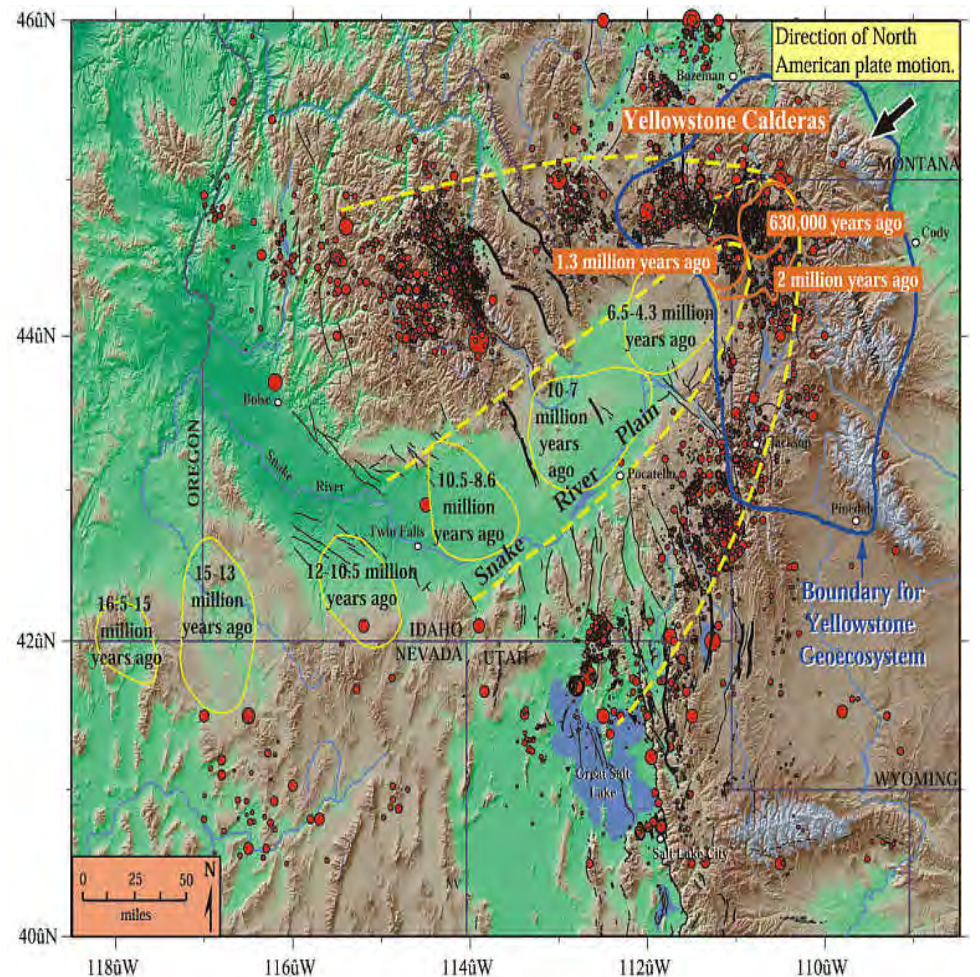
June 30th, 1975 in Yellowstone National Park a few miles southeast of Norris Geyser Basin registered a 6.0. Not much damage was reported, and no lives were lost.

October 28th, 1983 a 7.3 magnitude shook Challis and Mackay where 2 children were lost and the quake could be felt as far away as Canada. This moved an entire mountain nearly 16 vertical feet and caused nearly \$12M in damages.

March 31st, 2020 a 6.5 rocked Stanley with nearly 5,000 aftershocks, was the 2nd largest every recorded in Idaho, but caused little damage and no fatalities.

There are many that have been recorded that register under 6.0 in magnitude, but it is obvious, both by history and the maps, that we are a hot spot for seismic activity. We'll explore a few of these more significant events in upcoming editions!

Map of Yellowstone Hot Spot



Yellow and orange ovals show volcanic centers where the hotspot produced one or more caldera eruptions- essentially "ancient Yellowstones"- during the time periods indicated. As North America drifted southwest over the hotspot, the volcanism progressed northeast, beginning in northern Nevada and southeast Oregon 16.5 million years ago and reaching Yellowstone National Park 2 million years ago. A bow-wave or parabola-shaped zone of mountains (browns and tans) and earthquakes (red dots) surrounds the low elevations (greens) of the seismically quiet Snake River Plain. The greater Yellowstone "geoccosystem" is outlined in blue. Faults are in black.



**411 NORTH
2300 EAST
ST. ANTHONY,
IDAHO 83445**

The Door Man

FOR ALL YOUR GARAGE DOOR NEEDS

208-624-3657



CALL OR EMAIL TODAY
service@idahodoorman.com

ORDER A DOOR FROM NOW TIL END OF 2023, MENTION PROMO CODE "DOORMAN23" AND BE ENTERED FOR A CHANCE TO WIN A PRIZE RANGING FROM

FREE DOOR TUNE UP,
\$50- \$100 GIFT CARDS,
RESIDENTAL OPERATOR,
RTIC COOLER,
AND MANY OTHER COOL PRIZES

USE TELEPHONE NUMBER (208) 252-5881

BOOK A SERVICE FROM NOW TIL END OF SEPTEMBER, MENTION PROMO CODE "PIONEER23" AND RECEIVE 10% OFF TOTAL INVOICE

OUR SERVICES

- ✓ Preventative Maintenance
- ✓ Broken Spring Repair
- ✓ Broken Cable Repair
- ✓ Door Off Track Repair
- ✓ Panel Replacement
- ✓ Garage Door Opener Repair

USE TELEPHONE NUMBER (208) 252-5881

DRAWING WILL BE HELD ON JANUARY 2ND VIA FACEBOOK LIVE.

 FOLLOW US ON FACEBOOK @THE DOOR MAN



Restaurant

Lunch 11am-5pm
Dinner 5pm-9pm
Daily Specials

Tavern

Full Bar
Pool Table
Shuffle Board
Live Music



We Proudly Serve
Idaho Grown
Miller Ranch Beef



akeside
odge



208-569-4763

Let Solar Scrub keep your solar panels
clean & producing optimal power
generation all year long.

We also do exterior cleaning of
businesses and homes.

Serving all of Southeast Idaho

Call us for a Free Quote



- Trash Service
Weekly pick up
Bear proof containers
- Dumpster rental
7 x 14 x 4 Bins
\$200/wk + \$100/delivery + dump fee
- Equipment rental
Forklift
\$210/day
*call for discounted long term pricing

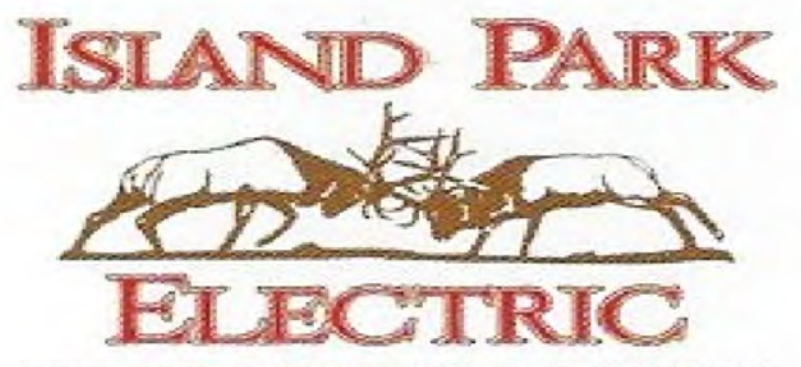


14 YARD DUMP BEDS

Available for all your construction
material needs whether you need
product hauled to you or you need
construction waste hauled away,

Give us a call today!

208-569-4763 or 208-351-7058



4108 S Big Springs Road
Macks Inn, Idaho 83433

Come Live the Mountain Life!



IpIdaho.com



Patty Laritz-Bithell | Patty@IpIdaho.com | (208) 860-4846



Income from Nightly Rentals - Commercial
3519 Yale Kilgore
MLS # 2157469
\$1,250,000



4 active nightly rentals - 5+ Acres - Commercial
3555 Yale Kilgore
MLS # 2156139
\$2,000,000



2 RENTAL UNITS
3771 Moose Breath Lane
MLS # 2161921
\$850,000



CREEK ON LOT
4119 Pine Crest Drive
MLS # 2155933
\$430,000



MACK'S INN - Apartment over garage
4266 Gooding Street
MLS # 2153381
\$1,500,000



YALE CREEK
4125 Ponderosa Dr
MLS # 2160382
\$250,000



NEW SUBDIVISION
4920 Alpenglow Way
MLS # 2160452
\$264,000



Lots in Buttermilk Area
TBD Totem Rd
MLS # 2161709
\$199,900



Active Nightly Rental
3549 Old Shotgun Rd
MLS # 2155182
\$699,900

LIST RIGHT

I prepare a strong value proposition for potential buyers. We get the cabin in the right condition to list at the right price, then highlight your home's attributes with professional photography, drone footage, and/or 3D tours as appropriate to the market.