

## Inside This Edition

Crossword	Page 2
Toy Rental Companies	Page 5
Restaurant Hours	Page 8
Local Events	Page 10

Follow us on Facebook



The Caldera Times  
Island Park, Idaho

Read for free at:

[www.TheCalderaTimes.com](http://www.TheCalderaTimes.com)

Have an event coming up? Hiring? Know someone who should be highlighted? Want to write to the editor?

[Jen@TheCalderaTimes.com](mailto:Jen@TheCalderaTimes.com) 406.209.0022

# Dry Ridge Outfitters at Harriman State Park: The back story



Family stories. The Island Park area is so full of the unique journeys they have taken to arrive here with their businesses. This is the Littles' tale.

They have always had horses in their blood, from the time their forefathers came from Ireland in the 1700s and began by running a freight company with them, and then moved on to the Pony Express. They settled in the shadow of the Tetons eventually, and Russ and Margo's children are the 7th generation to be raised here.



In 1955 Russ' grandfather started the guiding business they still run today, running guests into the Tetons for \$10/day. His father continued the business and expanded to do drop camps and pack trips into Yellowstone National Park through the years. When Russ was of age, he took a job at Moose Creek Ranch, where he met his wife Margo, who was from Connecticut, just before he went to serve his mission for the Church of Jesus Christ of Latter Day Saints.

While he was away, he and Margo wrote the entire two year. Just four months after his return they married, Margo was "thrown" into ranching, as Russ described it, and they began an adventure of their own. As their family grew, it began to be difficult to support both generations on the wages the short season supplied, so Russ was either going to have to look for additional work, or expand the business once more.

That same year, 2006, the contract for Harriman State Park came open, and the family won the contract, thus began the arm of

Dry Ridge Outfitters that operates in Island Park. I'm not sure which part of this operation is more daunting in my eyes, but let me see if I can explain all the moving parts for you.

First, the park itself. Owned by Union Pacific Railroad investors from 1902 to 1977, the park acreage served as a cattle ranch and private retreat for the Harriman and Guggenheim families, and was known as the Railroad Ranch. Not wanting to see it developed, the Harriman family then donated the 11,000 acres and began spearheading the parks and recreation department in the state. Today it remains a fantastic ecosystem of rivers, mountains, meadows, lakes, abundant wildlife and fantastic scenery for all to enjoy.

Second, the horses. They run about 50 head of mostly Draft/Quarter horse mixed breed. But that's not the whole story. This family has raised every one of the horses on that string, and continue to raise babes. They have 40 more at home they are breeding or in the process of raising or training in order to make the 50 on the dude string work well.

While Russ' Dad raises registered Morgan horses, Russ started out with Quarter horses as their mainstay, but determined they needed a little more bone and structure in their animals, so they introduced a Belgian/German draft breed mixed with the old style American Belgian. This cross produces the sure footed, well

Continued on Page 2



## Soda Co: Meet the New Owners



The Soda Co has become a landmark and a staple in Island Park, and most folks learned recently that it had been purchased by new owners. The truth is, Robyn and Eric Eastin bought it just over a year ago, and they aren't strangers to running this type of business.

Robyn hales from Newdale and has been coming to Island Park with her family, who owned a

cabin at Mack's Inn, since she was a child. So, a local at heart! Her and Eric purchased a cabin here themselves and have enjoyed continuing that tradition.

They own the SodaVine in Rexburg and St. Anthony and love the atmosphere those stores produce. The Eastin's had been planning to open a SodaVine here in Island Park before Covid hit. Soda Co beat them to the punch, which was disappointing for them, so when the previous owner needed to move his family and approached them to purchase his business, they were elated. Taylor Pebbly knew they would continue to operate this little shop with all the love and care they had poured into it originally.



Continued on Page 13

# Crosswords

## ACROSS

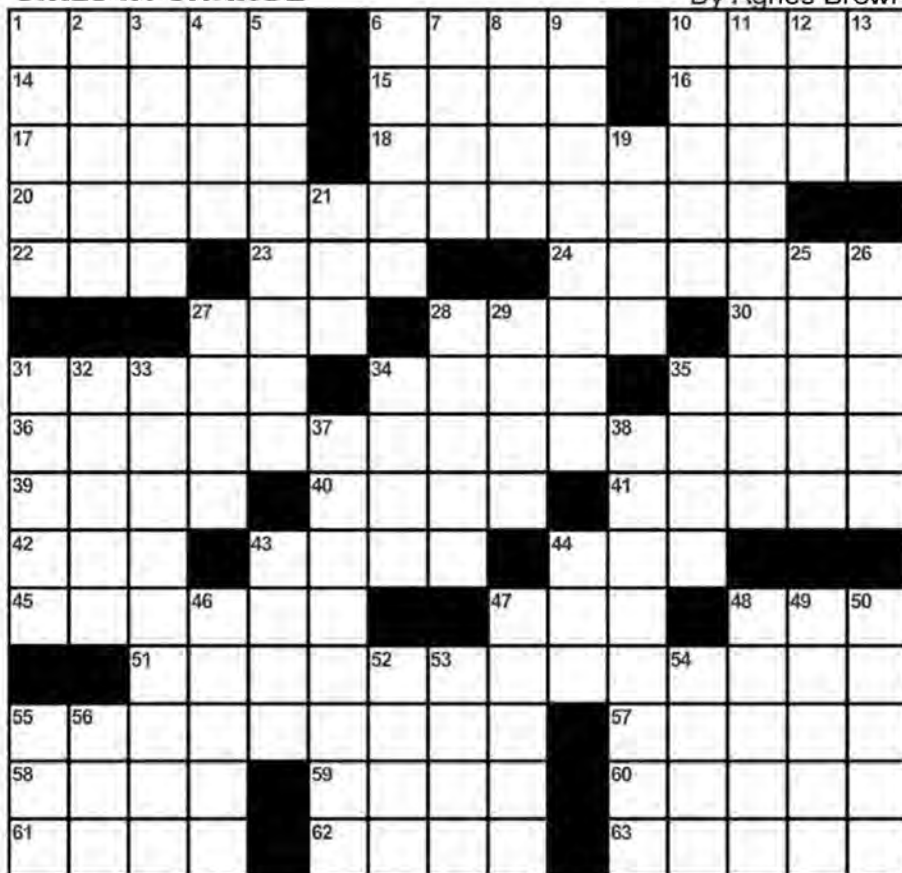
- 1) Cinematic turkeys
- 6) William the Conqueror's burial place
- 10) Nasty guy
- 14) Farewell
- 15) Fashion magnate Gucci
- 16) Manitoba tribe
- 17) "Blue" singer Rimes
- 18) Ticket for a makeup game
- 20) Start of a woman-approved quip
- 22) Singer DiFranco
- 23) Shipping co.
- 24) Made uniform
- 27) Dude kin
- 28) Elroy Jetson's mom
- 30) Caesar's 1,011
- 31) Negatively charged particle
- 34) Shoots the breeze
- 35) Adam's boy
- 36) Middle of a woman-approved quip
- 39) Cosmetics giant
- 40) Air freshener scent
- 41) Ship of fuels?
- 42) Prohibit, as a pesticide
- 43) Monthly expense, for some
- 44) Larry King worked there
- 45) Fainting
- 47) "In" thing
- 48) Weight-loss locale
- 51) End of a woman-approved quip
- 55) Put in order
- 57) "Nancy" rich kid
- 58) Create
- 59) Masked men in parks
- 60) John of music
- 61) Former world power
- 62) Cancun coin
- 63) Accomplishing

## DOWN

- 1) Model-maker's wood
- 2) Music hall
- 3) City on Biscayne Bay
- 4) "Well done!" in Italy
- 5) Overexposed, in a way (Var.)
- 6) Marathoners' prerace intake
- 7) Jai \_\_\_ (court game)
- 8) Falco of "The Sopranos"
- 9) "You must be kidding!"
- 10) Earthy hue
- 11) Anti-takeover maneuver
- 12) Kind of center
- 13) Cartoon squeal
- 19) Hibernation site
- 21) Mil. address
- 25) Drive out
- 26) Thanksgiving guest
- 27) Beethoven's birthplace
- 28) Pleasure trip
- 29) Having the necessary power
- 31) Addis \_\_\_ (Ethiopia's capital)
- 32) Some old Chevy models
- 33) Smelting locale
- 34) Winner's look
- 35) It can be doubled on a face
- 37) Unfolded
- 38) Pondered
- 43) Architect Mies van der \_\_\_
- 44) Subway unit
- 46) Seal's kin
- 47) Corpulent 1980 Dom DeLuise comedy?
- 48) Longtime Chicago Symphony conductor
- 49) Air-race marker
- 50) For \_\_\_ (cheaply)
- 52) "Julius Caesar" setting
- 53) Eats late
- 54) Type of tie or knife
- 55) Mustangs school, briefly
- 56) Western defense grp.

## GIRLS IN CHARGE

By Agnes Brown



## Happy 90th Birthday Joan Whitaker

The Whitaker children, Scott, Brett, Jan, and Teresa, along with their families, are happy to announce the 90th birthday of their wonderful mother, Joan Whitaker. A family celebration was held at her cabin in Last Chance.

Joan and her late husband Reese have been involved in the Island Park community since 1975. She began Rainbow Realty in 1988 where she actively worked until 2020.

During the summers you will still see her at her cabin in Last Chance with her children, 10 grandchildren, and 14 great-grandchildren making memories for generations to come.



## Dry Ridge Outfitters in Harriman

Continued from Page 1

built, beautiful Strawberry and Blue Roan horses that make up most of the Littles' string at Harriman today.



Their kids start training the horses, and then the kids and wranglers ride them for the first 2 to 4 years, which is the equivalent of 3,000 miles of riding. If the horse is ready, it's placed in the string, if not, they go back to the wrangler. They are then reevaluated, if they still don't meet the personality or training requirements for a client, they are sold (I'm told this rarely happens!). Folks, this is a ton of work before you even get to mount your horse for your 1 to 4 hour ride for the day!

Third, someone has to schedule, and Margo is the magician. This family takes 50 to 100 people a day on rides through Harriman and makes you feel like you are the only group there. They have a high wrangler to guest ratio so you are well taken care of, and they keep their groups small, 4 to 10 people max.

Believe it or not, Margo will customize every single ride she sends out. You want all flat ground? No problem. You want a mountainous climb? Sure thing. You want 2 hours, no problem! All customized to fit your group, between a 1 and 4 hour ride (if you want longer, they refer you to the original Dry Ridge Outfitters in the Tetons, who still run longer days). No wonder they have a 65% return ration. Can you imagine

keeping track of the number of people, wranglers, horses, and trails it takes to accomplish that every single day? If you're a cowboy under 6 years old, you'll have to stay near the corrals to ride for safety reasons, but she can even accommodate that!

They also do Elk rides in September and October, and this is a treat! If you have never heard an Elk bugle you should not miss this opportunity. These are better weekday rides, and mornings are better than evenings, these rides are a little more structured, being 2.5 to 4 hours with intermittent breaks, so plan your day accordingly.

Wagon rides are also an option, ask about them if you would rather ride a buck board than a saddle!

Give Margo a shout! If you're a smaller group, with a bit of flexibility, she can generally squeeze you in. If you have a specific day in mind, or are a bit larger, give her a few days notice to arrange your trip. If you have a larger party, say a family reunion of 30 to 40 people, they would be happy to work with you, just call a couple of months in advance and she will accommodate you, with a discount! After all, this is a family affair.

**DryRidgeHarriman.com**  
**DryRidgeHarriman@gmail.com**  
**208-558-7433(Ride)**





**Christi Spinner**

www.ListwithLizTeam.com

List with Liz  
Real Estate Team

**208-604-2153**

**KW KELLERWILLIAMS REALTY EAST IDAHO**

**Elk Creek Estates** Remodeled 3 bed/2 bath Year Round Accessible, Fully Furnished, Vacation Rental possible. Walk to Buffalo River for renowned Fly Fishing. Leave right from the cabin on trail systems, on 1/2 acre with Garage/Shop for toys!  
3912 Chief Joseph Drive, Island Park   MLS# 2155048                   \$595,000



**3512 Glen Tree, Island Park Drive** Owner willing to Carry! Vacation Rental, 2nd home, Year Round Residence. Wooded 1ac, 1bed, 1ba, Shed, Power, Septic System,, Fire Pit & RV area. Ready to put your finishing touches on  
MLS#2155521                   \$299,000



**756 Idaho Street, Ashton** Charming 4 bd/2 bath home w/Garage in the heart of Ashton ID. Huge updated eat in kitchen w/ newer appliances, and updated bathrooms with tile floors and tile tub surrounds. Quiet Neighborhood.  
MLS #2151988                   \$259,900



**GATED WATERFRONT COMMUNITY!** 2 community Boat Launches w/ docks & an acre of manicured park, the South end has a sandy beach for swim days. Vacation Rentals Allowed. Corner lot.                   \$245,000



**Eagles View Subdivision** Centennial Mountain & Lake Views. Subdivision borders 1300ac of Trude. Short term rentals allowed. Private Runway/Landing Strip and Sandy beach access exclusive to HOA. Building Plans Included!  
\$180,000 & \$250,000



Beautiful **WATERFRONT LOT** in gated Centennial Shores Subdivision. Outstanding Centennial Mountain Views & Island Park Reservoir Views coupled with Unobstructed Sunrise and Sunsets. Allows for Vacation Rentals & Guest House in Addition to Main House. One of the last remaining!   \$989,000



**ICE HOUSE CREEK** subdivision. Creek Frontage, woods and fantastic views. This subdivision is mostly 5ac + parcels so plenty of elbow room. Year Round Access, Option for Rental Use, Allows Horses, PERC test already done with standard septic approved.

5.11 Acres \$387,000

6.39 Acres \$399,000



## Fisher Pointe Lots

**83.83 Contiguous Acre Subdivision** Positioned above the SW end of Henry's Lake. There are 15 Parcels offering close Boat Launch Access to Henry's Lake for World Renowned Fly Fishing, Soaring Views of the Greater Yellowstone Rocky Mountain Range, Paved and County maintained roads to Subdivision and Surrounded by State Land, BLM and Caribou National Forrest. Buy all 15 of these Amazing Properties and Own Your Dream. Year Round Access and **ALLOWS SHORT TERM RENTALS**. Just a 20 min drive to **YELLOWSTONE NATIONAL PARK**. Purchase bulk and save!  
MLS#2152805                   \$2,500,000



Gorgeous, 100+Contiguous Acre Subdivision Positioned above the SW end of Henry's Lake. These 5-7 Acre Parcels offer close Boat Launch Access, Soaring Centennial Mountain Views, Pavement to Subdivision and Surrounded by State Land, BLM and Caribou National Forrest. Buy one, two or 15 of these Amazing Properties and Build Your Dreams. Allows for **LONG OR SHORT TERM RENTAL**. Just a 20 min drive to **YELLOWSTONE NATIONAL PARK**. Lots 1,2,3,4,5,6,12,13,14,15,16,17,21,22,23 All Available ranging from 215k-265k

**FISHER POINTE AT SAWTELL MEADOWS SUBDIVISION**

ACREAGE	
Lot 1 1.10-4.0	Lot 14 1.10-4.0
Lot 2 1.10-4.0	Lot 15 1.10-4.0
Lot 3 1.10-4.0	Lot 16 1.10-4.0
Lot 4 1.10-4.0	Lot 17 1.10-4.0
Lot 5 1.10-4.0	Lot 18 1.10-4.0
Lot 6 1.10-4.0	Lot 19 1.10-4.0
Lot 7 1.10-4.0	Lot 20 1.10-4.0
Lot 8 1.10-4.0	Lot 21 1.10-4.0
Lot 9 1.10-4.0	Lot 22 1.10-4.0
Lot 10 1.10-4.0	Lot 23 1.10-4.0
Lot 11 1.10-4.0	Lot 24 1.10-4.0
Lot 12 1.10-4.0	Lot 25 1.10-4.0
Lot 13 1.10-4.0	Lot 26 1.10-4.0

STATE LAND

TARGET NATIONAL FOREST

# Fire Season Here in the Caldera

It's here again. However, whether you call it lucky or not, we have been blessed with an abundance of rain and rather chilly temperatures through out most of our spring and summer. It has produced a huge number of mosquitoes, but not a dry forest.

That could all change in a day or two. Those of us that live here know that. In the spring months, we generally take the time to prepare our properties by trimming up trees and shrubs around our homes in an effort to somewhat fire proof our homes. If you haven't already done so, and need some help, Al Parks with I Saw That can help!



For those that don't live here, whether you visit often or it's your first time, forest fires for us are a very real threat. Even though it's a good wet year, a few days over 80 degrees with a good warm breeze and we could have high fire danger rather quickly.

Before you start a fire of ANY kind, you should check to see if there is a fire ban, both with the state and the county. [www.idahofireinfo.com/p/centennial-fire-restrictions.html](http://www.idahofireinfo.com/p/centennial-fire-restrictions.html) is the state website. Fremont County will post and pin on Facebook their restrictions, search Fremont County Emergency Management for their page. If our fire dangers are high, they will also restrict the use of charcoal grills, so be diligent in watching for that as well. If your at all curious about the fires currently burning in Idaho, you can check those at [www.idl.idaho.gov/fire-management/idaho-fire-map](http://www.idl.idaho.gov/fire-management/idaho-fire-map).

Even with no restrictions, whenever you decide to have a campfire, you should consider having a fire extinguisher or water source close by and keeping you fire small enough to manage easily. We do all love a warm camp fire to gather around, roast marshmallows on, tell ghost stories over, and make memories across, but please help us keep our forest and our homes safe!



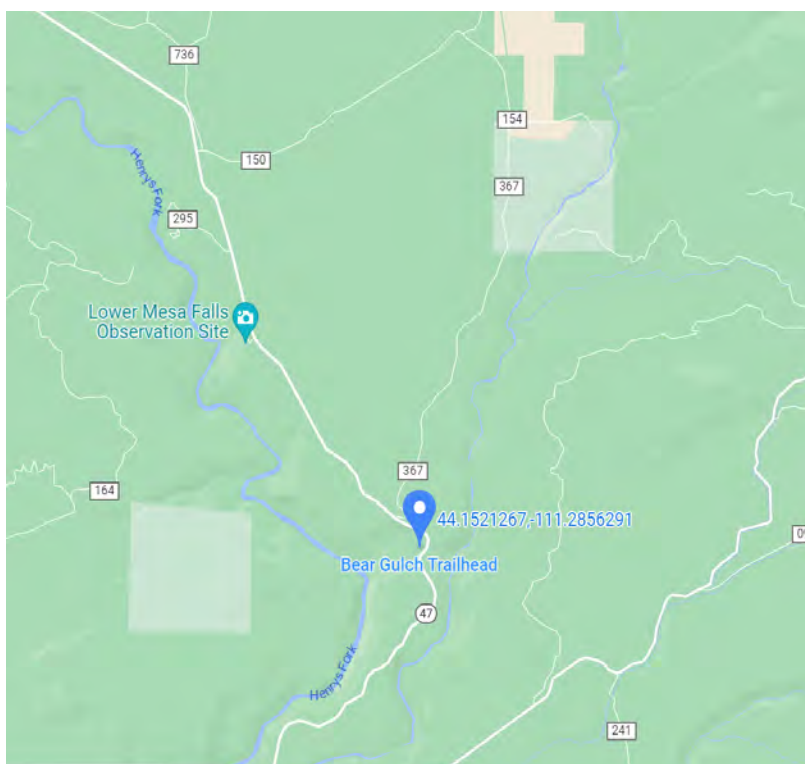
## Bear Gulch Ski Basin Hike

Rob Stanton suggested this is a great little hike, and while I haven't done it yet, I plan to get out and do it yet this year. Maybe after the mosquitoes have subsided some! But I was curious, so I did a little digging and thought I would share the history I found.

This was only the 2nd ski resort ever established in the state of Idaho (the first being Sun Valley). In the spring of 1939, Alf Engen, a world-class skier from Norway helped lay out the first runs on the hill. In the beginning, skiers were transported up the hill in the "Red Assed Lift", meaning a 5 foot by 16 foot flat bottomed sled linked by cables. In the Fall of 1940, they upgraded and added a tow rope. The fee for using the modern amenities? 10¢ a ride for the sled, and 5¢ a ride or \$1.00 a day for the tow rope!

During World War II, from 1942 to 1945, the ski hill closed. Bear Gulch Ski Basin, Inc was formed by a group of local residents who raised money in addition to their own funds to reopen. In 1948 the old toboggan lift was replaced with a T-bar lift and they began building the lodge.

By 1959 prices had gone up to \$2.50 per day, with season tickets being offered at \$15 for the tow rope and \$30 for the T-bar lift. An Army surplus GMC truck sat up on a large wooden structure at the top providing the power for the tow with its gasoline engine. They also offered some night skiing on one run! Operation of the hill remained the same until 1965 when Fall River Electric brought power



It is .7 of a mile down to the Henrys Fork from the parking area. Before you get to the river, you will pass the lower end of the old lift

into the area and a double chair lift was installed. Volunteers did the grooming, lining up to ski-pack an individual run until Skidoos towed wooden frames and chicken wire.

In the Fall of 1970 Bruce and Shirley Black, with associates, purchased the resort and worked hard between 1971 and 1976 to improve the hill. During this time a ski shop was opened, providing ski maintenance and rental equipment, and a ski school was started that turned out many highly ranked junior skiers.

In 1978 the resort sold again, and this was the beginning of a quick decline, the resort never really took hold again. It went through a foreclosure, and the newpurchaser attempted to bring it up to snuff, but never quite made it to forest service requirements to retain the permit.

In October of 1989 Lou Woltering, Ranger of the Ashton District said that he gave the order to burn the Bear Gulch lodge, shortly thereafter the dozers took most of the rest of the remnants off the land. Although there are still a few metal parts left to see on your hike!



**PLEASE JOIN US FOR LUNCH, INFORMATION & ACTIVITIES !**

**WILDFIRE AWARENESS DAY**

*Come learn about fire-adapted plants and how to make your home safer against wildland fire*

**SAT. JULY 22, 2023**  
**10 am-2 pm**

**FREE LUNCH 11-2:**  
Burger or hotdog, chips, cookie and water (while supplies last)

**Island Park Forest Service Building**  
3726 US Hwy 20

Supported by Idaho Department of Lands in cooperation with the U.S. Forest Service

In accordance with Federal law and U.S. Department of Agriculture policy, this institution is prohibited from discriminating on the basis of race, color, national origin, sex, age, or disability. (Not all prohibited bases apply to all programs.) To file a complaint of discrimination, write USDA, Director, Office of Civil Rights, Room 320-SV, Whitten Building, 1400 Independence Avenue, SW, Washington, DC 20250-9410 or call (202) 720-5964 (voice and TDD). USDA is an equal opportunity provider and employer.

**SEASON SPECIALS**  
PLAN NOW FOR THE FUN AHEAD

**SEASON PASSES**

\$40.00--First Pass  
\$35.00--Second Pass  
\$20.00--Third & each additional pass

FAMILY PASSES WILL NOT EXCEED \$150.00

EXCELLENT CHRISTMAS GIFTS  
BUY NOW AND SAVE \$\$\$

**BEAR GULCH**

Mesa Falls 522-1865 Ashton 652-3268 Lodge 652-7367



You can read the complete history at:  
[Fremontcountyhistoricalsociety.org/article/bear-gulch-ski-basin](http://Fremontcountyhistoricalsociety.org/article/bear-gulch-ski-basin)

# Recreation Maps



Scan to download the Avenza Map App. Create an account, it's free. Find the Island Park Motorized Recreation Map, both North and South for all of the Island Park area. Find your trails and enjoy yourself. Please, don't forget, cell coverage here is difficult in most areas, don't count on it for your navigation. Use a paper map, or download your map to be sure you can use it.

**LAKESIDE RENTALS**  
Island Park Reservoir

**208-558-9770**

**SEA-DOO can-am ski-doo**

## Watershed Festival

**July 28, 2023**  
**3 - 5 PM**





**Join the Henry's Fork Foundation for an afternoon of fun for all ages.**

**Participate in fun games and activities to learn about our local watershed and the organizations that help it!**

**Enjoy complimentary barbecue food!**



Held at:  
Henry's Fork Foundation Campus  
801 Main St, Ashton, ID

## Equipment Rental Island Park

### Lakeside Lodge

3857 Lakeside Lodge 208.558.9770

6 seat Defender	\$409
4 seat Commander	\$389
Sea-Doo Spark/Trixx	\$250
Sea-Doo GTX Pro 130	\$309
Boats Starting at	\$425
Kayak 1 Seat	\$ 50
Kayak 2 Seat	\$ 80
Stand Up Paddleboards	\$ 50
Bakcou Mule Fat Tire Mountain E-Bike	\$165



### Island Park E-Bike

3413 US Hwy 20 208.351.5932

E-Bike	1/2 day \$85	Full day \$125
Kayak	3 hrs \$50	Full day \$90
Paddle Board	3 hrs \$40	Full day \$80
Float Tube	3 hrs \$20	Full day \$35

### High Mountain Adventures

4141 Sawtelle Peak Rd 208.558.9572

Razor Trail 900 50"	\$299
Razor XP1000 2 Seat	\$329
Razor XP1000 4 Seat	\$399
Razor Pro 2 Seat	\$349
Razor Pro 4 Seat	\$419
Kayak	\$39
Triple Kayak	\$60
Raft	\$99
Paddle Board	\$49
Float Tube	\$25

### Island Park Adventures

3342 N Hwy 20 208.558.7581

Defender Max	\$419
Commander Max	\$399
Maverick Trail	\$299
Outlander Max	\$239
Outlander	\$199
Sea Doo Spark 3-UP	\$229
See Doo GTX	\$329

## TargheeTrailRidersIslandPark@gmail.com

The group is open to anyone that shares a love of this area and the trail systems. Simply email us at the email above to join. We have a Facebook group called Targhee Trail Riders Island Park Idaho where information regarding upcoming events and important announcements will be posted.

Please join today!



ISLAND PARK SOAPS  
PRICE LIST  
PRICE IS PER BAR



208-521-1936

50 BARS+	\$ 1.85
100 BARS+	\$ 1.75
150 BARS+	\$ 1.65
200 BARS+	\$ 1.55
250 BARS+	\$ 1.45
300 BARS+	\$ 1.45

SOAP LABELS ARE HANDMADE AND ORDERED WHICH TAKE A WEEK AT LEAST IF NOT A LITTLE LONGER

## Summer Rodeos Reminder

For further information on either of these two topics, you can check back in the June edition of at TheCalderaTimes.com and read up on pages 5 and 6.

One of the favorites **Meadow Vue Ranch** on Wednesday and Saturday nights. Buy tickets, or find more information at Meadowvueranch.com/rodeo

Or **Wild West Yellowstone Rodeo** Every Wednesday through Saturday, for more information, westyellowstonerodeo.com/tickets.



## Horseback Riding Reminder

**Dry Ridge Outfitters** in Harriman State Park, and can tailor the ride to your group size and needs. To learn more visit DryRidgeHarriman.com/horse-rides.

**Yellowstone Horses at Eagle Ridge Ranch** Monday through Saturday, morning trips, afternoon rides, and evening outings paired with a western cookout dinner. Choose and book at their website here Yellowstoneworld.com/schedule-rates/.

**Diamond P Ranch** rides into the Gallatin National Forest. You can book morning, afternoon or evening rides. More information at TheDiamondPRanch.com/rides/.

**Creekside Trail Rides** for shorter ride, or a wagon ride. One hour horseback rides start at 9:30 am, run through 5 pm Thursday through Saturday schedule here Westyellowstonerodeo.com/creekside-trail-rides.

## Off Road Vehicles Requirements and Rules

In addition to boating season, it's also OHV (Off Highway Vehicle) season. This can mean any number of things, all terrain vehicles (think four wheeler), side by sides, motorcycles, or four wheel drive vehicles. When it's too cold to be on the water, we find ourselves in the forest, on the trails, in any number of these types of transportation devices. And, as with boating, there are rules that come along with using them, both for residents and non-residents.

If you plan to use your OHV in either Idaho or Montana (on the trails into West Yellowstone for instance), you will need the correct recreational permit sticker for each state. In Island Park, you can purchase your Idaho sticker at Harriman State Park, Henry's Lake State Park, or our brand new Sam Patch Grocery Store, or call 800-247-6332. In Montana, you can purchase them at the Corner Cenex in West Yellowstone or the West Yellowstone Chamber of Commerce, or online at <https://ols.fwp.mt.gov/>. The following rules apply to trails only

- A DOT approved helmet for those under 18 years of age
- A muffler and Forest Service approved spark arrestor

If you are traveling on any State or Federal roads (This includes Idaho Department of Lands, Bureau of Land Management, U. S. Forest Service, Idaho Department of Parks and Recreation, Idaho Department of Fish and Game, and privately owned roads open to OHV use!), you can add to the above:

- A valid drivers' license OR an OHV Education Certificate for forest service roads only and supervised, with strict guidelines, by an adult
- Liability Insurance

And, on city and county roads, you can add to the above

- Must have a valid drivers' license
- License plate
- Brake light
- Head light/tail light
- Audible horn at 200 feet
- Mirror showing roadway 200 feet behind
- Passengers are legally not allowed unless designed to carry one



ATVING is all about riding safe and by using hand signals it will let other ATVERS know what you are doing.

### On coming ATV Hand Signals



1 atv 2 atv's 3 atv's 4 atv's 5&up atv's The last ATV in the group

When passing another group it is best to warn others on how many are left BEHIND YOU. For 5 or more, hold up all 5 digits. For 4 BEHIND YOU hold 4.

If you are the last or riding solo hold up your fist.

Be safe out there!



SCAN ME

Link to trail maps for motorized vehicles in the Island Park area. Zoom into the area you want to ride in! **Please remember, most of our area gets very poor cell phone reception, you should not rely on that for your map, use a paper map, or download your route!**



Once you are ready to ride, pick your course! We have hundreds of miles to ride, but be aware, some of our trails are rated for size, so be sure to check your maps twice if you are over 50" in width to make sure you can navigate the terrain. Don't forget, cross country travel off trails in both Montana and Idaho is prohibited, and there are NO motorized vehicles allowed in wilderness areas. Forest service roads and trails are 35 MPH unless otherwise posted, but there is quite a bit of that country that isn't safe to ride at those speeds, and be sure to carry the appropriate gear for sudden weather changes, have a first aid kit, and emergency equipment including a tow rope and safety gear. Know where you can cross Highway 20, and where you cannot, and when you do cross, be sure to cross at a 90 degree angle!

Above all else, while you are here to recreate and enjoy yourself, please be courteous! Remember, you share the trail with many others, horses spook easily, slow down when passing them, your vehicle kicks up dust and mud, slow down when passing those on foot or bike. When traveling through residential neighborhoods to get to your trails, go slowly, don't rev your engine or play your music too loudly. If you pass through a gate, leave the gate as you found it, close it if you opened it, leave it open if you found it that way.

Have fun and be safe!

If you want to read further, or would like to know how the funds from your Idaho recreational stickers are put to use, go to: [Parksandrecreation.idaho.gov/wp-content/uploads/OHV\\_BOOKLET.pdf](https://Parksandrecreation.idaho.gov/wp-content/uploads/OHV_BOOKLET.pdf)



**SAWTELLE  
PROPERTY  
MANAGEMENT**

Your Premier Short-Term Property  
Management Solution  
Island Park, Idaho

Let us help you get the most out of your  
short term rental property!

208.313.1701 or E-mail [Tyler@sawtellepropertymanagement.com](mailto:Tyler@sawtellepropertymanagement.com)



**ASAP SEPTIC PUMPING**  
208-390-7559

**ASAP SEPTIC PUMPING**  
208-390-7559

Full time Septic Pumping In Island Park  
Tank Locating, Digging and Inspection  
for STR and Real Estate Sales Inspection  
24 Hour Emergency Services  
**LOOK FOR THE BIG RED TRUCK**  
[Asापumping.com](http://Asापumping.com)

**Open Year Round  
Restaurant**  
Breakfast Buffet Fri-Mon  
8am-11am  
Lunch 11am-5pm  
Dinner 5pm-9pm

**Tavern**  
Full Bar w/ Patio Seating  
Pool Table  
Shuffle Board

**Lodging**  
Cabins  
Motel Rooms  
Campground

**C-Store**  
Cold Beverages  
Clothing  
BBQ Supplies  
Gifts  
Miller Ranch Beef

**Lakeside Rentals**  
9am-5pm

Reserve your rental online today!



**208-558-9770**



**UPCOMING EVENTS**

- July 15 – Perfect Chaos 8pm
- July 21 & 22 – Satin Steel 8pm
- July 22 – Fireworks 10pm
- July 29 – Tail Hooked Whitey 8pm
- Aug 5 – Sweet Nickole and  
The Rag Dolls 8pm
- Aug 12- OCD Band 8pm
- Aug 18 & 19- Aaron Ball Band 8pm
- Aug 26- Tail Hooked Whitey 8pm
- Sept 1 & 2- Satin Steel 8pm

**We Proudly Serve  
Idaho Grown  
Miller Ranch Beef**



**Lakeside  
Lodge**

SEA-DOO |  | **can-am** |  | **ski-doo**

   [www.lakesidelodgeandresort.com](http://www.lakesidelodgeandresort.com)



**Restaurant**

Breakfast Buffet Fri-Mon  
8am-11am  
Lunch 11am-5pm  
Dinner 5pm-9pm

**Tavern**

Full Bar w/ Patio Seating  
Pool Table  
Shuffle Board

We Proudly Serve Idaho Grown Miller Ranch Beef



# Caldera Restaurant Days and Hours

- Anglers Lodge & Riverfront Restaurant**  
3363 Old Hwy 191 208.558.9555  
12 pm to 10 pm

---

- Cafe Sabor**  
4298 Hwy US-20 208.558.9300  
Wednesday - Saturday 11 am - 9 pm  
Sunday 12 pm - 8 pm  
Closed Monday and Tuesday

---

- The Cafe at Island Park Lodge**  
4149 N Big Springs Loop Road 385.227.1197  
Wednesday - Sunday  
Breakfast 7 am - 10:30 am  
Lunch 11 am - 3 pm

---

- Connie's Restaraunt**  
4130 Quakie Lane 208.558.6987  
Sunday 3 pm - 9 pm  
Monday and Thursday 11 am - 9 pm  
Friday and Saturday 11 am - 10 pm  
Closed Tuesday and Wednesday

---

- Happy Anglers Cafe**  
3340 Hwy 20 208.497.9455  
Sun and Mon 7 am - 12 pm  
Tues - Sat 7 am - 2 pm

---

- Lakeside Lodge**  
3857 Lakeside Lodge Lane 208.558.9770  
Daily  
Lunch 11 am - 5 pm  
Dinner 5 pm - 9 pm  
Breakfast Buffet Sat and Sun 8 am - 11 am

---

- Meadow Creek Lodge**  
Meadow Creek Road 208.351.2787  
Friday and Saturday 8 am - 7 pm  
Sunday 8 am - 5 pm

---

- The Parlor at Mack's Inn**  
4169 N Hwy 20 208.558.2450  
Tuesday - Saturday 11 am - 9 pm

---

- Pond's Lodge**  
3757 Hwy 20 208.558.7221  
Main Kitchen: Wednesday - Monday 11 am - 9 pm  
Pizza Kitchen: 7 days a week 11 am - 10 pm

---

- Springhill Suites Island Park**  
4292 N Highway 20 208.558.2400  
Thursday - Monday 4 pm - 10 pm  
Closed Tuesday and Wednesday

---

- Squatchee's Soda**  
3372 N Hwy 20 208.360.1022  
Thursday - Monday 7:30 am - 2 pm

---

- Subway**  
4141 Sawtelle Peak Rd 208.558.9884  
Monday - Saturday 8 am - 3 pm  
Closed Sundays

---

- Twisted Pine @ Historic Phillips Lodge**  
3907 Phillips Loop 208.390.8303  
Reservations Only

---

- Trouthunter-Last Chance Bar & Grill**  
3327 Hwy 20 208.558.8006  
Daily  
8 am - 9 pm



**Join the Island Park Founders Parade on August 26, 2023!**  
Register at [IslandParkParade.com](http://IslandParkParade.com) for free before July 26th

**By Teara Galbraith**  
Residents and visitors of Island Park! Come be part of a historic celebration that will bring our community together like never before. The Island Park Founders Parade is set to take place on August 26, 2023, we invite every one of you to join in the festivities. Here are a few reasons to be part of this remarkable event:

**Celebrate Our Rich Heritage:** We will commemorate the establishment of our beautiful community and pay homage to the pioneers who laid the foundation for our town. By participating, you'll be honoring their legacy and showcasing your pride in being a part of this remarkable history.

**Showcase Your Creativity:** The Founders Parade is a vibrant display of creativity, unleash your imagination and join in the fun! Decorate your bikes, cars, floats, or even create your own walking group with dazzling costumes and props.

**Strengthen Civic Pride:** Participating in the parade sends a powerful message of civic pride. By joining the event, you'll be displaying your commitment to the growth and prosperity of Island Park. Let's show the world that we are a community filled with enthusiastic, engaged individuals who take pride in our home.

Don't miss out on this extraordinary event! If you want to participate, be sure to register, it's free before July 26th!

**Island Park GROCERY DELIVERY**

Order and pay online

WALMART REXBURG  
ALBERTSON'S REXBURG  
BROULIMS REXBURG

Order and pay for your groceries at any of the above 3 locations. We will pick up and deliver (fridge items will be put away) prior to your arrival. Pickup days may vary please call prior to ordering for schedule and pricing.

Dennie  
(208) 571-5781

Colleen  
(208) 317-4872





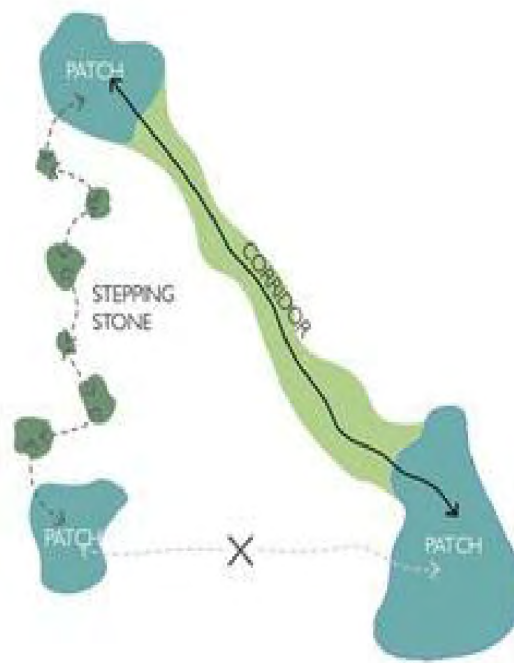
# Conservation is about Connectivity!

By Karen Schumacher

The Bureau of Land Management (BLM) adheres to international standards for conservation. Although "fragmentation" and "habitat" are frequently referenced in the Upper Snake East Travel Management Plan Draft Environmental Assessment in relation to multiple different types of species, the word connectivity isn't really prominent. One purpose of moving and decreasing the number of these trails is to repair fragmentation and restore land for connectivity.

Habitat connectivity is the insane notion that because of human activity, roads, and development, habitat becomes fragmented. In other words, the land that maintains connectivity, corridors and stepping stones, is disrupted. In the graphic below, it is conceived that there must be a connection between patches in order to maintain connectivity. This habitat includes all ecological elements, including vegetation and wildlife. If damaged, that area must be restored in order to re-establish connectivity. Maintaining connectivity protects biodiversity, or so they say.

The 2021 White House America the Beautiful initiative, which outlined its conservation goals, includes its 30x30 agenda, a plan to conserve 30% of land by 2030. Other than declaring more national monuments for banned use, it has taken two years until now to get going on this. However, it now appears the aggressive move is on for placing land into conservation. It is clear that using habitat connectivity is at the core of meeting the 30x30 goal



In March 2023, the Council on Environmental Quality (CEQ) put out a memo that outlined the new requirement that all public land use planning must include connectivity. Maybe the Chair should have checked with the BLM, as it had already

instituted this policy in November, 2022. Somehow, the BLM sees "wildlife and fish" as one of the resources expressly included in the definition of "multiple use" (Section 103(c)) in the Federal Land Management & Policy Act (FLPMA), and justifying its use for connectivity.

BLM land must now be evaluated to determine "if existing land use plan decisions are (or are not) restoring, maintaining, improving, and/or conserving areas of habitat connectivity" and "incorporate areas of habitat connectivity". From that, the land use will be planned around habitat connectivity, which plays into where and why trails are being moved and reduced, as this policy includes "Travel management implementation". The Center for Large Landscape Conservation (CLLC) and Network for Landscape Conservation (NLC) are two organizations ready to jump on this as connectivity is their heart.

As the name implies, the NLC is a network of environmental groups as well as government agencies such as the U.S. Forest Service. In February, 2023 it held a webinar that discussed "Insights into the new Global Biodiversity Framework" (GBF) that came out of COP 15, held in December, 2022. Also attending COP 15 were officials from the Biden, State, and USAID departments. Even though the U.S. is not a signatory of the Convention on Biological Diversity, it is an "observer" to support the GBF, its outcomes in America, and its 30x30 agenda. The CEQ Chair, the one who can't keep dates straight, was also present, lending her support and commitment to the GBF. The GBF also meets the 2030 Agenda for Sustainable Development.

Along with CLLC celebrating this framework, both of these two organizations have had direct influence on government policies on integrating habitat and wildlife connectivity into federal planning





**McCLOUD SERVICES**

Excavation - Plumbing - Utilities  
Gravel - Roadbase

208-223-2382  
flintmccloudconstruction@gmail.com

and decisions. The White House Council on Environmental Quality issued guidelines that "incorporate the objectives in this guidance into agency actions". Travel Management Plans are one area where this connectivity agenda is being used.

There are four GBF goals. Goal A focuses on "the integrity, connectivity and resilience of all ecosystems are maintained, enhanced, or restored".

Within these 4 goals are 23 targets to be met by 2030. This is the core of 30x30, using biodiversity to take land for conservation as outlined in Target 2. The America the Beautiful 30x30 agenda originates from Target 3 which ensures the conservation of 30% of the land and inland waters. Target 4 calls for "management actions to halt human induced extinction of known threatened species and for the recovery and conservation of species". Target 14 ensures "the full integration of biodiversity and its multiple values into policies, regulations, planning and development processes" which are being implemented through the BLM.

Following COP 15 in March 2023, the White House Council on Environmental Quality issued guidelines "for ecological connectivity and wildlife corridors" that "incorporate the objectives in this guidance into agency actions". Travel Management Plans are not the only area where this connectivity agenda will be used.

In a NLC webinar, as attendees to COP 15, it was discussed how the GBF is part of the America the Beautiful 30x30 agenda, and as a U.S. observer, it will help to implement GBF objectives. Indigenous rights were also heavily emphasized. Not surprisingly, it was also revealed that about 2,000 corporations were present at COP 15 to develop markets for this agenda, Nature Action 100 being one of them. Like the proposed conservation leasing, public land is being monetized, not for our right to use the land, but to conserve it for the purposes of making money for the government.

The Department of Interior (DOI) also held its own little party in March of this year, celebrating its conservation agenda, even with Biden in attendance, who gave kudos to Rep. Mike Simpson "to bring healthy and abundant salmon runs back to the Colorado [Columbia] River system." (This is in reference to Simpson wanting to remove dams. Parenthesis is to fix Biden's gaffe. His remarks begin at the 37" mark in the video). Nice to know we have an Idaho representative enmeshed with a president and not the people. Biden even referenced running roughshod over private land for this agenda.

In the video of the DOI event, there were multiple Native American speakers and again, a very heavy emphasis on Indigenous rights. At the 11:25 mark, CEQ Chair Brenda Mallory, a COP 15 attendee, spoke. She mentioned the same, connecting habitat across private land, infusing equity and justice into the use of land, and was excited the president could do all of this by just using his pen.

So, the upshot is that public land agencies will be integrating connectivity into all land planning, resulting in a reduction of land use for the protection of biodiversity, as outlined by organizations in which these agencies have made international agreements. Also on the horizon, these agencies are looking to monetize this work, making the land a money-making machine for them. Who then will control how the land is used? Be on the lookout for GBF implementation on BLM and other public land in your area. Land use planning is now about connectivity and eliminating the use of land. Understand your enemy. Watch the videos. These directives are not based on the law.

It is nearly impossible to find any government agency that is not tied in with corporations, foreign governments, environmental and other radical non-profit groups, and despotic organizations such as the UN. The U.S. has not followed the Constitution for decades. Until this is realized by all, and choose to do something about it, we will fail in getting our country back.

Photo by Caryn Esplin

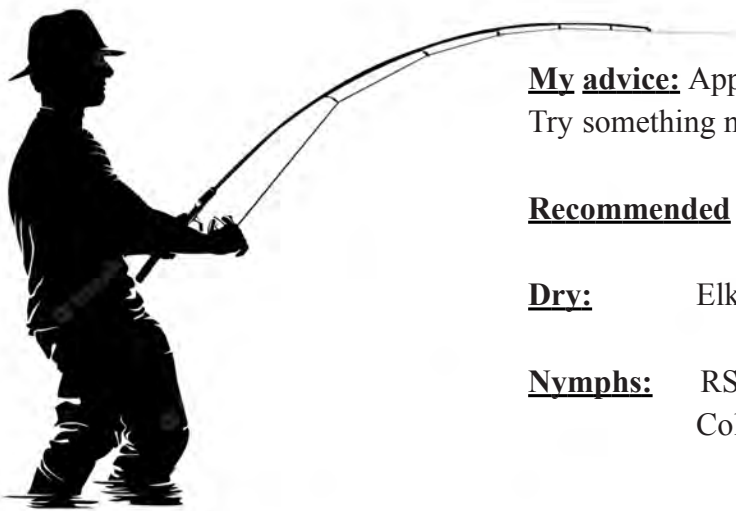
# Henry's Fork Fish Report

## July 10, 2023

By Ben Blankenship

When it comes to fly fishing, Island Park is known for its consistency in fish production and while that may provide a good stroke to one's ego, it can also be, well, stagnant. It becomes so common to have good days that when the revolving patterns change, we often find ourselves lost.

Many of us got into fly fishing due to the ever changing landscapes and the challenges presented on new waters. And that's what the Henry's Fork is presenting to us this year. In many ways, we have a whole new river to fish with a whole new set of rules. Hatches have been off cue at times and the fish may be fewer than previous years. But, we've got bugs and big fish looking for them.



**My advice:** Approach the water with an open mind and adventurous spirit, you will be rewarded. Try something new for a change.

**Recommended Flies:**

**Dry:** Elk Hair Caddis 14-20, Egg-laying Caddis 14-20, Brown Drake 14-16

**Nymphs:** RS2 16-18, BH Collared Hair's Ear 16-18, Barrs Emerger 18-20, Shop Vac 18-20, Collared PT 18-20

# EVENTS IN ISLAND PARK

We hope to see you around town this summer at some of the cool events going on in our area!

**Island Park**

- July 21 & 22
- July 22
- August 4 & 5
- August 6
- August 7
- August 11 & 12
- August 16
- August 26
- September 1 & 2
- September 9
- September 16
- Memorial to Halloween
- Memorial to Labor Day
- October 28

- Island Park Festival
- Pioneer Days – Fireworks
- Quilt Guild - Display and Sell
- I ❤️ IP - IP Chamber event
- Daisy's Angels fashion Show
- Swaptastic Swap Meet
- Targhee Women's Charity Auction
- Island Park Founders Parade
- Island Park Festival
- Wine in the Woods
- Brogfest
- Music (Saturdays, some Fridays)
- Shotgun Sundays
- Halloween Costume Party

- Sawtelle Resort Pavilion
- Lakeside Lodge
- Marriott Conference Room
- Sawtelle Resort Pavilion
- Hines Residence
- IP EMS building
- Marriott Conference Room
- Big Springs Loop
- Sawtelle Resort Pavilion
- Harriman State Park
- Shotgun Bar
- Lakeside Lodge
- Shotgun Bar
- Lakeside Lodge

**West Yellowstone**

- Thursdays June to September
- July 4 & 22
- July 15 to 17
- August 2 to 13
- August 4, 5 & 26
- August 12
- August 26
- September 16

- West Yellowstone Market
- Music in the Park
- Wild Bill Days
- Mountain Man Rendezvous
- Music in the Park
- Horseshoes for Hero's
- Wretched Mess Arts Fest
- The Happening

- Museum Lawn
- Heritage Park
- WY Rodeo
- West Entrance (YNP)
- Heritage Park
- Hi Country Tavern
- Heritage Park
- Union Pacific Dining Hall

For more information about these events, check out our website at:

[IpIdaho.com/events](http://IpIdaho.com/events)



## EMS Funds Raised

A big congratulations to Karen Tauscher, who finally made it back to Island Park after our long winter, to pick up the beautiful quilt she won after purchasing the winning raffle ticket.

Tickets were sold over the winter at Bar 030 to benefit the Island Park Ambulance and Michelle Green graciously donated her time and her talent to make the quilt that was raffled.

A huge thank you to all those that participated, both in purchasing tickets, selling tickets, and arranging the event to benefit the community, over \$1,200 was raised. Your efforts are appreciated by all!

# For the Love of Island Park!



Our team is excited to say that we're giving back! Our team founded The Mountain Life Charitable Foundation to give back to the community we all love and build an even better town for future Island Parkers. We are fundraising to establish a fund to support residents facing hardships, and to grow an endowment for a community housing program. We will also host or sponsor events to support other local organizations.

<b>Patty Laritz-Bithell</b> Patty@IpIdaho.com (208) 846-4846	<b>Tina Crow</b> Tina@IpIdaho.com (208) 573-8304	<b>Kristen Andelin</b> Kristen@IpIdaho.com (208) 360-8850	<b>Lynette Tingey</b> Lynette@IpIdaho.com (208) 851-8474	<b>Shawna Fuller</b> Shawna@IpIdaho.com (208) 731-3688

 <b>LAKEFRONT</b> 5406 Henrys Lake Road MLS # 2153024 \$1,195,000	 <b>MACK'S INN</b> 4266 Gooding St MLS # 2153381 \$1,500,000	 <b>5+ Acres with a Stream</b> 5219 Hwy 20 MLS # 2154506 \$575,000	 <b>Henrys Lake Views</b> 5170 Valley Drive MLS # 2155084 \$475,000
 <b>SHOTGUN AREA</b> 3987 Joseph Dr MLS # 2155275 \$629,900	 <b>GORGEOUS LAKE VIEW</b> 3825 Sage Lane MLS # 2155154 \$669,000	 <b>Active Nightly Rental</b> 4119 Huckleberry Lane MLS # 2154498 \$599,900	 <b>GORGEOUS VIEWS</b> 3337 Eagles View Road MLS # 2153126 \$215,000

ipldaho.com

**Looking to buy or sell?**  
Contact The Mountain Life Team  
GoTeam@IpIdaho.com  
(208) 534-6775

# Time Travelling Through Yellowstone by horse and wagon

By Tom Bithell

It's hard to imagine living on a homestead farm outside of Marysville, Idaho in 1902. No electricity, no plumbing, none of the things we are used to in modern times. That was the childhood of my Great Grandfather, Frank Thomas Bithell. Growing up on a small farm in rural Idaho.

It all had started when my Great Great Grandfather Thomas and his brother's George and Dick homesteaded about 3 miles east of Marysville. Between the three of them they had 240 acres. Growing up I heard the stories about the hardships, triumphs, sorrows and joys of life on the homestead. I marveled thinking how it must have been to live in the middle of nowhere with only horses and wagons.

Fortunately many of these long ago stories were documented by my Great

Grandfather's sister, Blanche. Her descriptions bring the past to life. Imagine spending winter in this home she described:

*Our house on the farm was a typical pioneer cabin. It was made of rough logs with mudpacked in the chinks. The roof was made of sawed logs with dirt packed on top so in summer we always had a garden of weeds there.*

*Inside there were two rooms, a kitchen and bedroom. The walls were covered with brown building paper tacked on with tin discs the size of a quarter. The ceilings were low and were covered with factory, a rather sleazy unbleached muslin. There were a couple of windows and an outside door in each room.*

*The bedroom floor was covered with a home-made rag rug. Mother and Aunt Carrie tore and sewed the rags for the weaver then sewed the finished strips together. Part of the kitchen floor was bare, part covered with linoleum.*



(Pictured: Frank, Harold, Blanche, Phares 1904~)

Amazing to think about having a dirt floor in this day and age. But this was their life and by and large they were happy:

*We had a happy childhood on the farm. We played together a lot but we also played with the four Johnston children who were our nearest neighbors. The Johnstons had a pond where we fished for what we called pollywogs. They were really salamanders or water dogs. They were lizard-like creatures and we caught them with a bent pin for a hook and a fly for bait. We spent many hours wading barefoot in the mud catching the salamanders and throwing them back.*

*During the summer when there was a lull in the farm work we went on fishing trips. Several families would go along to Bear Gulch, Island Park, or to some other good fishing and camping spot and there were plenty in those days. We always had a grand time and many bountiful fish dinners.*

The legacy of fishing around Island Park lived on and was passed down to my generation, along with the favorite fishing spots. Oh how I always wished I could go back and fish in those days. I heard many stories of the streams and rivers swarming with trout everywhere you went.



(Pictured: Belva, Lou, Tom, Frank, Sandra, Susan 1968)

The love of the outdoors learned on the Marysville farm was taught to all of us. Summer camp outs and visits to Yellowstone Park are family tradition. I was lucky enough to visit Yellowstone for the first time with my Great Grandfather in 1968. I didn't know it then, but his first visit to Yellowstone was in 1910, by horse and wagon!

*During this summer we made a trip through Yellowstone National Park. Some friends from Utah, John and Sadie Hepworth, came to go with us. The Cordingley family, our closest friends in the area, went to. John Cordingley had worked for the park driving dudes through so he knew what to see and how to get around.*

*We rode in buggies and took a covered wagon to carry supplies. There were also a couple of saddle horses for the older children to ride. We traveled slowly and camped wherever we wished as there were no regular campgrounds back then. There were hotels here-and-there through the park but no motels or cabins. Visitors were few and we had a wonderful wilderness vacation. One night a bear got in our grub wagon and Dad got up to investigate. He could see where the canvas cover was distended and gave the bear a good blow with a shovel. It gave a grunt, jumped out of the wagon, and took off into the timber. Luckily it didn't attack. We spent about two weeks touring and viewing the natural wonders.*

Visiting Yellowstone by horse and wagon on dirt roads is unimaginable for people today. But think about going to school. We all remember the hardship stories our parents told us about walking to school. Well Blanche told us how it was back then:

*When we first came to the farm the nearest school was in Marysville and Frank rode back and forth on old Bess. When Harold turned six he rode along to. The little boys were fine in the fall but when winter came it was an ordeal. Friends who lived along the road would take the boys in, warm them and send them on the next stretch. Luckily the body of the horse warmed them a little. I've wondered if this introduction wasn't the reason Harold hated to go to school. He used to cry and wish the school house would burn down or that the teacher would get sick or be called away by a death in his family. It is ironic that he became a teacher and went to school most of his life.*

Blanche Bithell documented many interesting stories about life on the farm and the happenings in the Marysville - Ashton - St. Anthony area. There are too many good ones to tell today, but tune into future editions of The Caldera Times for more stories from the old days.

## Caldera Custom Docks

ISLAND PARK, IDAHO

DOCK SALES/SERVICE/MAINTENANCE

208-313-2858  
Calderacustomdocks.com

FEATURING Wave Armor PRODUCTS

# West Yellowstone · MT CALENDAR of EVENTS

SUMMER 2023

- June 24 Yellowstone Trail 50K, 25K & 10K
- July 4 Independence Day Celebration & Pie on the Porch
- July 4 FREE Music in the Park [Devon Worley Band]
- July 8 Mountain Bike Biathlon
- July 15 Wild Bill Day [at West Yellowstone Rodeo]
- July 15 Heritage Celebration
- July 15 Touch a Truck and Kids in the Park
- July 22 FREE Music in the Park [The Powell Brothers]
- Aug. 2-13 West Yellowstone Mountain Man Rendezvous
- Aug. 4 FREE Music in the Park [Slamabama]
- Aug. 4 & 5 West Yellowstone Rod Run
- Aug. 5 FREE Music in the Park [Imagine]
- Aug. 5 & 6 Wyoming Desperados Shootout [at Diamond P Ranch]
- Aug. 12 Horseshoes for Heroes [at Hicountry Taverns]
- Aug. 19 POWMIA Ride
- Aug. 25 Christmas in August [at Museum of the Yellowstone]
- Aug. 26 Wretched Mess Arts Festival
- Aug. 26 FREE Music in the Park [Luke Dowler & Midnight Conversations]
- Sept. 10 WYSEF Golf Tournament
- Sept. 16 The Happening

Wild West Yellowstone Rodeo mid June - August Every Tuesday - Saturday  
Farmers Market on the Museum Lawn June 1st through September 28th Every Thursday 5-8pm



More info - [www.DESTINATIONYELLOWSTONE.COM/CALENDAR](http://www.DESTINATIONYELLOWSTONE.COM/CALENDAR)

## Island Park's Newest Little Souvenir Shop With the Biggest Heart

Ready to take home your unique souvenir or gift from your visit to Island Park? The brand new Island Park Souvenir and Gift Shop is open! Located at 3519 Yale-Kilgore Road, our littlest shop with the biggest heart offers a wide range of specialty and one-of-a-kind items to commemorate the memories you make in our beautiful area.

Whether it's a t-shirt, hat, postcard, or trinket, we have something for everyone. Friendly staff will be on hand to help you find the perfect gift or keepsake to bring home.

Why wait? Come see us and take home your piece of Island Park. Can't wait to see you!



## Soda Co: Meet the New Owners

Continued from page 1

The Soda Co currently employees 12 locals, three are retired teachers, one of which is Robyn. She taught 29 years at Madison High and 6 yrs. in Utah schools. Her husband Eric, also employed, is retired from 35 years at Basic American Foods. Being able to provide jobs for youth, and open up opportunities for growth and reward in a fun environment has been a blessing and a joy to Robyn. The way she described it to me, it sounds like it's her passion. And, in achieving that goal, she also gets to bring happiness to her customers and communities with her unique products.



This year, they changed up their menu for the first time in 3 years, but the Build Your Own drink is still a favorite and still an option. They've added several new items, like a cookie frosting kit you can take with you (not on the menu, but ask! Super fun to take to the park, or home for the Grandkids to decorate), nachos, pretzels, trail snacks, and Mountain Water for refreshing drink with allow sugar option.



They have also worked towards more of an online presence. You can now enjoy a loyalty program that offers discounts, purchase E-gift certificates to give to friends or loved ones, and carry your punch cards all on your phones for a never lose, easy to use solution! You can also follow them on Instagram for specials, announcements, sign up for the loyalty program and purchase gift cards. @sodaco.islandpark and Facebook @The Soda Co.

As always, your favorites treats will be available, Huckleberry Cookie, Pretzel Bear Bites. Top drinks: Buffalo Bills Island, Cabin Fever, Latte, Mountain Cold butterbeer, Pine Haven Colada, Old Faithful being just few. Find the menu offerings @sodavine.com/soda-co-menu-island-park. This can be accessed on the Instagram feed.



Bring the family and come on by for your treat, it's becoming an Island Park tradition! Take a picture, post the shot of your visit, tell us why you love Soda Co and receive a 10% discount on your next order.

**EAST SUMMIT**  
EXCAVATING

SERVING EAST IDAHO  
EXCAVATING, GRADING, SEPTIC

Call or Text for a Free Quote  
**(208) 569-6017**

**Electric**

**208-351-7058**

**Electrical Contractor**

Serving all of Southeast Idaho



# OUTBACK REALTY

208.558.9500



Jamie Phillips  
Broker  
(208) 221 2647



Jackie Jensen  
Realtor  
(208) 390 8303



Riley Hoyle  
Realtor  
(208) 351 6705



Gay Johnson  
Realtor  
(208) 351 5204



Gary Dawson  
Realtor  
(208) 351 3054



**REDUCED!!**

Robbins Sub \$998,000  
5 bed / 3 bath / 1/2 Acre  
Garage & Shop



Macks Inn - \$599,900  
3 bed / 2 bath / 1 full Ac  
Rentals allowed



Buffalo S.H. \$575,000  
3 bed / 1 bath  
Garage



Aspen Ridge - \$695,000  
3 level / 3 beds / 1.5 bath  
Garage / She Shed / Trees



Shotgun \$975,000  
6 bed / 4 baths / 1.93Ac  
2 Kitchens. Great Rental



Harris H.S. \$750,000  
4 bed / 1 bath / .48 Ac  
Great Rental



**REDUCED!!**

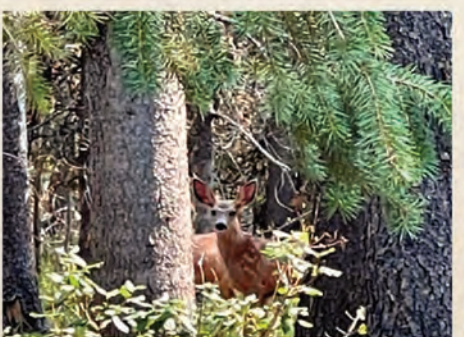
Ralph T. - \$495,000  
3 bed / 1 bath / 1/2Ac  
Rental potential - Garage



Shotgun \$599,900  
2 bed / 2 bath / 3 lots  
RV spot / Lg garage



Southshore \$799,900  
Waterfront with boat dock  
1.45 Acres / Road on lot



Silverhawk \$424,900  
Private Dock / 1.54 Ac  
Gated Community



Yale Creek \$349,000  
Tiny home / 2 RV hookups  
.83 Ac / Large trees



Island Park SH - \$399,000  
3 bed / 1 bath  
Garage / Rentals allowed



Yellowstone Acres  
3 bed / 2 bath / Extra lot  
AMAZING VIEWS!!



Macks Inn \$549,900  
2 bed / 2 bath / 1/2 acre  
2 sheds / oversized garage



The Repair Shop  
Commercial Property  
.95 ac / \$2,300,000



Gravel Pit \$999,900  
Commercial Property  
4.38 Acres

Stonegate \$299,900  
3.51 ac building lot  
Great year round access

The Woods \$279,000  
3.04 ac building lot  
Heavily Treed

Eagles View \$169,900  
Views all around  
2.25 Acres

Fisher Pointe - \$250,000  
5.35 Acres  
Great Views!

# Pioneer Days Celebrations July 21st & 22nd, 2023

Pioneer Days is an official holiday celebrated for the first original pioneers arriving in the Salt Lake valley after being forced to leave the state of Illinois. It is celebrated mostly in Utah and some surrounding states with parades, fireworks and rodeos.



Satin Steel July 21st & 22nd

Island Park definitely enjoys celebrating this holiday and there are some exciting activities happening. The Island Park Festival will be held during that weekend this year. Fun and entertainment provided for all ages in the Park on Sawtelle Peak Road and Quakie Lane. Look for the signs for Sawtelle Peak Road and Connie's Restaurant, bring one and all and come have some fun.

Of course, all weekend long, you can come enjoy the outdoors at Lakeside Lodge with the family. For \$8 per person, or \$45 for a group of 8 you can enjoy the bounce houses, their beach, picnic area, and water park with trampoline!



If Lakeside is where you end up for the afternoon, then you'll be there for the show in the evening of the 22nd. Satin Steel starts at 8 pm, and the fireworks show begins at 10 pm. These folks are well known for putting on a show you won't want to miss.

It's a great weekend folks! But please don't forget it's one of our busiest. Take your time, be kind, treat your servers well, smile a lot and just enjoy yourself.

## MOUNTAIN LIFE CHARITABLE FOUNDATION

### ABOUT US

The Mountain Life Charitable Foundation was formed to give back to the community we all love and build an even better town for future Island Parkers. We are fundraising to establish a fund to support residents facing hardships, and to grow an endowment for a community housing program. We will also host or sponsor events to support other local organizations.

MountainLifeCharity.org  
Info@MountainLifeCharity.org

**CONTACT US**  
(208)-860-4846  
PO Box 441  
Island Park, ID 83429

## ISAAC WALKER

OWNER

CALL OR TEXT FOR A QUOTE

208.243.0049

CLEARDIAMONDWINDOWS21@GMAIL.COM

**CLEAR DIAMOND**  
WINDOW CLEANING

# Island Park Festival <sup>2023</sup>

Outdoor Event held along Quakie Lane and Highway 20  
SAWTELLE LODGE PARK | SAWTELLE RD

## Pioneer Day Weekend

FREE TO THE PUBLIC

JULY 21, FRIDAY 3-7 pm  
JULY 22, SATURDAY 10-7 pm

Variety of Food Trailers / Butterfly Farm

## Over 150 Vendors

Fun For All Ages

- horse drawn carriage
- smokey the bear
- live chainsaw demo
- arts                      • crafts
- antiques                • wood decor
- jewelry                 • DJ
- live entertainment

Sponsored by:

Connie's Restaurant  
Sawtelle Mountain Resort

www.islandparkfestival.com

## Johnny Sack Cabin At Big Springs

This is a historical gem in Island Park, and this year, the Island Park Chamber of Commerce Community FUNdraiser is hoping to raise the funds to repair the water wheel there.



If you have yet to visit this location, consider it a must on your list of things to do! In the 1930's this quaint cabin was constructed by

Johnny Sack by hand, each log crafted and placed, and each piece of furniture built to fit his 4'11" stature.

The unique history, Big Springs itself, and the surrounding area area all worth the side trip! And, if you have the time this year, consider attending the FUNdraiser August 5th (see below), fill your belly, play some games, and help repair the water wheel.

I  
IP

**8th Annual  
I Love Island Park Chamber  
Community FUNdraiser**

August 5th ~ 4 - 7PM  
Sawtelle Mt Resort Pavilion

**Member Booths w/Kids Games**  
Business Members will be setting up informational booths  
With \*activities or games for kids!  
**Saturday August 5th 2023**  
**All You Can Eat Chicken Dinner**  
\$15 Per Plate OR \$40 For A Family Of 4  
(\*Meal Purchase Includes Entry To Park For Games)  
Joe Williams is returning to be our MC  
Raffle And Silent Auction with grand prize drawing at 6:30

The Goal of the Island Park area Chamber of Commerce is to raise money to Help repair the water wheel at the Johnny Sack Cabin

Contact The Island Park Chamber  
208-558-7755 ~ email islandparkchamber@gmail.com  
Chairman is Peter Vlodka

Scan for current Information and Updates

Follow us on facebook for updated information

Scan For Facebook Event

## Boating Season: Quick reminders

Make sure your boat is clean of any parasites before launching, and be aware, that an invasive species sticker is required for ANY boat you are launching. You can purchase those at Robins Roost. If you're curious about the program, or the rules, visit [idfg.idaho.gov/info/boat-stickers](http://idfg.idaho.gov/info/boat-stickers).

Kiddos 14 years of age or under, playing on a kayak or paddle board of any kind, must be wearing their life jackets, and carry a whistle by Idaho law.

If your new to boating in Idaho, or think you need a refresher course, you can find the entire Idaho handbook for boating laws and responsibilities [here](http://assets.kalkomey.com/boater/pdfs/handbook/idaho-handbook-entire.pdf)

**Wakes.** These are a bone of contention! Home owners around the lake have invested thousands and thousands of dollars in their docks and shorelines. And, the wakes from the boats, particularly the surf boats can cause significant damage. I'm a surfer, and a dock owner, I'm well aware and cognizant.



In Idaho, anywhere within 100' of the shoreline is a 5 mile an hour, no wake zone area, and there are plenty of places on the lake to surf without causing damage to other peoples property, so be aware, and please move away.

Jet Skiers, we all know you like the wake behind our boats. We do put up a nice wave to jump and play in. The law says 100 feet behind the boat, that's the closest safety zone for the surfer, skier or boarder. Enjoy yourself, but keep your distance! It is the life of the person being pulled behind the boat you are risking, and often times it is a child.

# Centennial Excavation

Shilo Owens      Jami Owens  
208-589-8313      208-589-6893

[WedigIdaho@Hotmail.com](mailto:WedigIdaho@Hotmail.com)  
[www.WeDigIslandPark.com](http://www.WeDigIslandPark.com)

LIC # RCT-1774



Excavation • Road Building • Lot Clearing • Complex/Standard Septics  
Utility Trenching and Installation • Demolition • Gravel

**WE DIG IDAHO**

## THREE RIVERS

SCREEN PRINTING & EMBROIDERY

**208-652-7974**  
510 Main Street  
Ashton, ID

**Custom T-Shirts • Apparel**  
**Workwear • Caps**  
**Promo Items • Stickers • Vinyl**

Visit us Online!



[www.trspe.com](http://www.trspe.com)

## 4th of July Funtastic Weekend

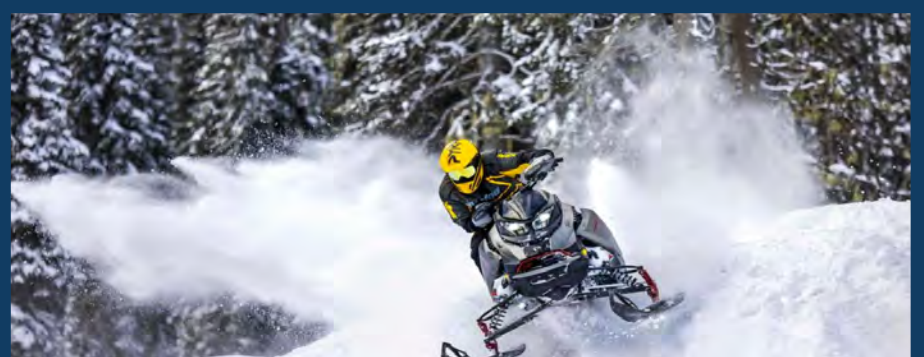


Another super successful 4th of July weekend! The boat Regatta and Bills Island Parade were both outstanding, what a group of creative folks, and the kids were energetic and fun.

As usual, Lakeside Lodge finished off the night with an outstanding fireworks show! Always a great night on the water with family and friends. Thank you Lakeside!

Check out Bills Island Association Facebook for more photos of both the Regatta and the Bills Island Parade.

It's a wrap, until next year!



### Attention Snowmobile Clubs

BRP's heritage in supporting snowmobiling dates back to the first groomed trail systems with the original SnoPlan. The Snow PASS Program continues in that spirit by supporting the grassroots organizations that make it all happen.

Ski-Doo and it's dealer network will provide a matched grant of up to \$5,000 USD to fund a variety of projects.

Eligible projects may include: Protecting or increasing access to playgrounds, making snowmobiling more accessible, helping clubs reinvent themselves, trail development, safety initiatives.

Applications must be received by September 15th, for more information, visit: [ski-doo.com/us/en/snow-pass-grant-program](http://ski-doo.com/us/en/snow-pass-grant-program)

**Put on your thinking caps!**  
**Lets find some good uses for this money in**  
**Island Park!**



# Shadow Woods Lots



**Shadow Woods subdivision** is a gated community with all season access. These easy access building lots have magnificent views of Mt Sawtell and frequent wild life sightings such as elk, moose and deer. Wild flowers abound and old forest timber bring the smells of nature to your future cabin. Mature trees and exposed building envelopes make for an early start on a spring build. In addition to wildlife viewing, a fishing enthusiast will love the 6 minute access to Henrys lake, 15 minute access to Hebgin lake and 25 minutes to the Madison river or West Yellowstone national park. Mountain bike or take the ATV trails to the nearby golf course or grocery store. Close to restaurants and gas this is an ideal location to build your mountain retreat. Short term rentals are allowed. Come pick your lot!



**Ice House Creek Subdivision** Heavily treed 5.99 acre lot that borders public land. Great building lot with winter access and strong covenants to protect your investment. Short term rentals are allowed should you want exercise that option. Privacy and easy access. Property is level ground with deer, elk and moose frequenting the property. Island Park reservoir is within 7 miles. ATV and snowmobile trails connect to 300 miles of trail. Come fish , hunt and play in a forested playground. \$315,000



**3746N Robbins Circle**  
**\$690,000**

Gorgeous cabin with close access to world class fly fishing on the Henry's Fork of the Snake River. Built custom by one of Island Parks premier builders. There are two homeowner easements to the water from subdivision. This home has covered lower and upper decks for safe entrance and year around enjoyment of the beautiful outdoors. Granite countertops, hickory cabinets, with beautiful circular sawn hickory wood floors in the kitchen and dining. Double sinks in both bathrooms with large shower and deep tub separate in master suite. Gas fire place and forced air gas furnace. Kitchen Aid appliances. Detached 576 ft garage. Close to mountain bike/walk trails, snowmobile trails, and Harriman State Park. Public boat ramp and take out are adjacent to the subdivision. Moose, Elk and deer frequent the area. No short term rentals are allowed. You can do month to month rental.

## Client Testimonials

I have worked with Clint Farmer on 3 separate transactions. All have been a breeze. He is the most honest and ethical agent I have worked with in 50 years. After the sale he is always eager to help with referral's to painters, repair people and much more. He is truly the best. I give him 10 stars

John Barber

We used Clint as our buyer's agent on a recent transaction and he represented our interests very well. We appreciated that he always seemed to be available by phone and missed calls were responded to quickly. Contract revisions were all submitted in a timely manner. Clint also worked well with our lender and kept everything flowing along smoothly. He was patient with trying to find property that met our requirement's and gave us lots of helpful advice. He personally inspected homes as we bought remotely. We would definitely use Clint again.

Tony and Stacy Gerhards



**Clint Farmer**

**435-770-3971**

**Clint@Rainbw.com**

Honesty and Integrity. Two things you should consider when looking for a real estate professional. For 18 years I have served the Island Park area as a real estate professional being honest, hardworking and maintaining my personal values. As a result, I have enjoyed repeat many repeat customers.

As an expert in property evaluation I can get your property priced and sold at a great return. As a buyers' agent, I can advise on the quality of the investment property and potential for earned equity.

**Call today for a free property valuation!**

**Rainbow Real Estate**

# Moose Crossing

## A new business & family venture

By Shawna Fuller

When you think of Island Park, what is the first memory that comes to your mind? For me, it is the very first weekend we spent here at the The Pines in November 2012, while scavenging the area looking at every cabin we could that was for sale. Trust me, this took several months of convincing my less than thrilled husband to go along with me buying a second home. (He would have much rather had a shiny new tractor.) On a wing and a prayer and a shoestring budget, we got our first log cabin nestled in the pine trees. Our first winter we could barely drag ourselves through the work week, counting down to the weekend for snowmobiling and enjoying the powder. We had avidly snowmobiled in West Yellowstone for years, but trust me the snow is better on this side of the mountain (and no, I am not prejudiced!).

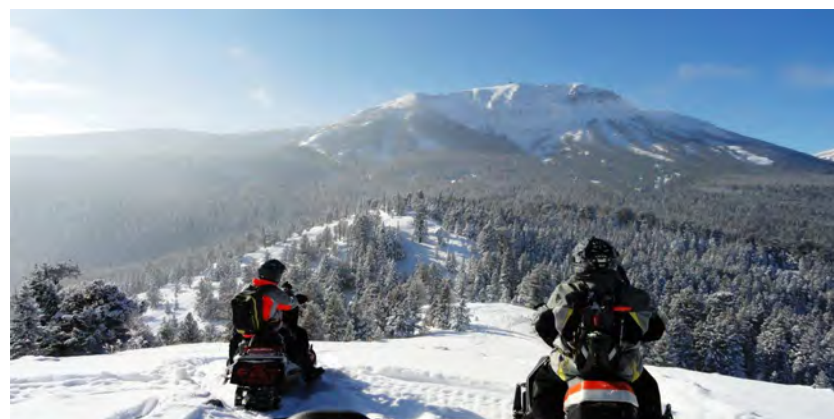
The cabin we purchased was already a VRBO and was the perfect situation for us so that we could use it all winter and rent it in the summer months when our jobs were more demanding. We enjoyed adding our own touches to it and doing small remodel jobs each year. The memories and love that was poured into that cabin with our family and friends can never be replicated. We decided to keep the name that the previous owners had chosen and so it was deemed Moose Crossing. I was unhappy with how our cabin was managed and knew that I could do a better job for my guests myself and that's when I decided to give it a try and took over management.

In the fall of 2013, I was approached by another home owner to manage his property and Moose Crossing cabin became Moose Crossing Vacation Rentals. I set goals, hired a cleaner and tenaciously set forth to prove that I could not only make this little business thrive, but make certain that my guests' experiences and memories were the best they ever had on vacation. My "cleaner", Rhonda Lasley, proved to be invaluable and in 2014 we joined forces and proceeded to grow the business to have 5 cabins under our care. Each year we were proud as more and more homeowners contacted us about managing their homes. For a while we were the booking agents, cleaning crew, maintenance and anything else that was needed. Thankfully, we were blessed to discovered this gem of a handyman who is irreplaceable (and shall remain nameless for his mental health) who can fix literally everything and has thru the years, probably numerous times!

By 2017 I was tired of living in a camper in the summer time and knowing that the company was continuing to grow, I purchased a little covered trailer with a shop. Now we had room for family and friends during the summer as well as winter and our love for the area continued to thrive. In 2020, I sold my first little cabin (resulting in several sleepless nights and lots of ugly crying) and bought a neat lot to build a new cabin where we could REALLY have more room for family and friends year-round.

Rhonda, being a long-time real estate agent, persuaded me to get my real estate license in 2018. We enjoyed working both the property management business and doing real estate together until she retired from Moose Crossing in 2020.

Being a person who loves to surround herself with family, I invited my daughter-in-law to fill her shoes and now thoroughly enjoy having my daughter-in-law and grandkids live with me all summer long. We have blossomed into a management company that has 3 full time employees and 3



part-time ones, along with begging friends and family for weekend help. "We take pride in our rentals" is our motto and we make certain that our renters are well educated and ready for their Island Park vacation. It is important to us that our neighbors, guests and home owners are all treated with respect and feel that they can come to us with any needs that arise and strive to show that vacation rentals can be a beneficial asset to our community.

Being part of the workforce of Island Park, we don't have a lot of time to recreate in the summer months (we let our guests do that for us), but in the winter we have a revolving door at our cabin and absolutely LOVE the winter in Island Park – probably more so today than in 2012! Anyone who knows me knows that winter is my FAVORITE time of the year and when that first snowfall starts you will catch me outside doing the snow dance and singing "Let It Snow, Let It Snow, Let It Snow"! I have so many more precious memories now with my family and friends in Island Park from mountain biking, to hiking, to miles and miles of snowmobiling – living our lives here is priceless.

**HENRYS FORK WILDLIFE ALLIANCE**  
CHAMPIONS FOR WILDLIFE

**Timber Creek Fence Removal**  
July 26 - 8:00 am - 2:00 pm  
Timber Creek development  
off Fiddleback Ranch Rd  
5605 2 Lazy 2 Rd, Island Park, ID

**On Grizzly Ground - Film Showing**  
August 19 - 7:00 pm - 9:00 pm  
Springhill Suites by Marriott, Island Park  
4292 N US-20, Island Park, ID

8:00am to beat the heat, but come whenever you're able! Wear tough working gloves, long sleeves and pants, and closed-toed shoes.

Bring a lunch and water bottles. HFWA will provide extra water and snacks. If you're thinking about coming, sign up to make sure you receive updates if plans change.

From the Emmy-nominated journalist who documented disappearing salmon across the Northwest, comes the chase of a lifetime in the new wildlife film, On Grizzly Ground.

**DON'T WAIT! SEATING IS LIMITED AND TICKETS ARE EXPECTED TO SELL OUT!**

**To sign up or buy tickets: [HenryForkWildlifeAlliance.org/events](https://henrysforkwildlifealliance.org/events)**

**Mack's Inn**  
LIVE CONCERT SERIES

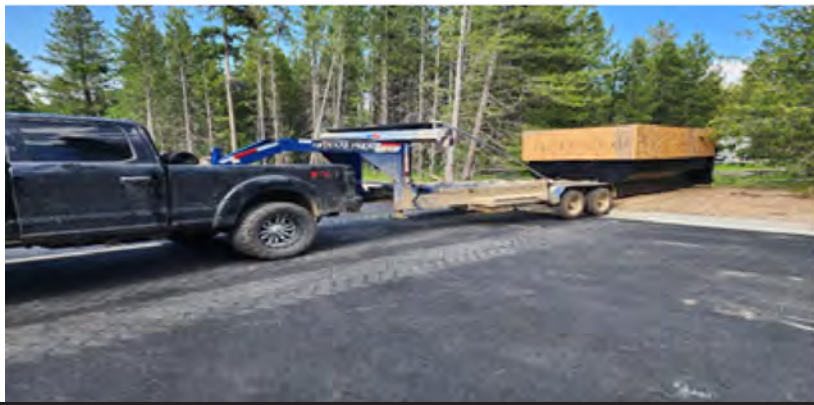
Wednesdays From 6:30 till Dusk

- Wednesday, June 28th "The Nevr Brothers Band"
- Wednesday, July 5th "Jake & Brakes"
- Wednesday, July 12th "Afu Fighters"
- Wednesday, July 19th "Wildflower"
- Wednesday, July 26th "Idaho Falls Blues Project"
- Wednesday, August 2nd "The Broken Outlaws"
- Wednesday, August 9th "Jason Green & Family"
- Wednesday, August 16th "The Family Band"
- Wednesday, August 23rd "Spike Coggin"
- Wednesday, August 30th "The Nevr Brothers Band"
- Wednesday, September 6th "Nathan Sutton"



**DAD'S CONSTRUCTION AND SERVICES**  
**208-932-3152 OR 208-380-4967**

- Trash Service                      Weekly pick up                      Bear proof containers
- Dumpster rental                      7 x 14 x 4 Bins                      \$200/wk + \$100/delivery + dump fee
- Equipment rental                      Forklift                      \$210/day call for discounted long term pricing



**For these events, don't forget:**  
 They are free, but there is a \$7 Motor Vehicle Entrance Fee  
 Dogs are not allowed beyond the parking lot

Facebook • Google • Inst

**Silent Paw Mobile Dog Spa**  
**\*Housecall Service\***

 Nail trimming

 Pet Grooming

 Poop scoop

Rigby, Idaho Fall, Ammon, Ucon, Roberts, Menan, Shelly, Firth, Blackfoot, Rexburg, Saint Anthony, Chester, Teton, Ashton, Island Park & All surrounding area.

**CONTACT ME**

(406)-860-2812  
 silentpaw.mobiledogspa@gmail.com



**July 2023 Events**

**Friday, June 30 from 9-11pm:**  
 Guided Full Moon Hike, meet at Ranchview parking lot. 3 mile loop.

**Friday, June 30 – Monday, July 3 from 10am-3pm:**  
 Guided Historical Tours of the Railroad Ranch, starting at the Jones House.

**Saturday, July 1 from 1-1:30pm:**  
 Women & Girls on the Ranch, at the Ranchview Shelter. Stories about women and girls who were a part of Ranch life in the earlier 20<sup>th</sup> century.

**Sunday, July 16 from 1-1:30pm:**  
 The Other Brother, at the Ranchview Shelter. Learn about the life of Averell Harriman, the "other brother."

**Friday, July 21 – Saturday, July 22 from 10am-3pm both days:**  
 Annual Harriman Heritage Days event, at the Railroad Ranch.

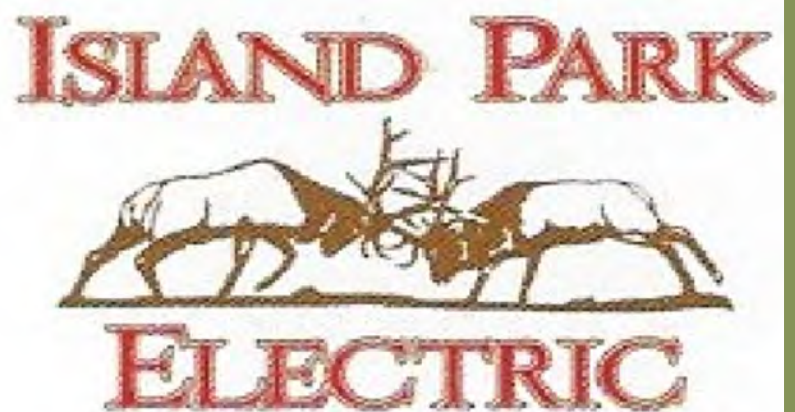
**Sunday, July 23 from 1-1:30pm:**  
 Tree and Plant Hike, meet at the Visitor Center parking lot. 1 mile loop.

**Saturday, July 29 from 1-2pm:**  
 Let's Talk About Bears with Idaho Fish and Game, at the Boys' House.

**Sunday, July 30 from 1-1:30pm:**  
 Women & Girls on the Ranch, at the Ranchview Shelter. Stories about women and girls who were a part of Ranch life in the earlier 20<sup>th</sup> century.




**Island Park Builders Supply**  
**558-7552**



**ISLAND PARK ELECTRIC**

**4108 S Big Springs Road**  
**Macks Inn, Idaho 83433**

# Come Live the Mountain Life!



ipidaho.com



**Patty Laritz-Bithell**  
 Patty@IpIdaho.com  
 (208) 846-4846

Come see me at the Island Park Festival at the Sawtelle Mountain Pavilion on Pioneer Weekend July 21 and 22nd. Catch the performance by local musician Jason Green sponsored by the Mountain Life Team. We're going to be giving away more cool stuff and raffeling off great prizes. Hope to see you there living the mountain life!



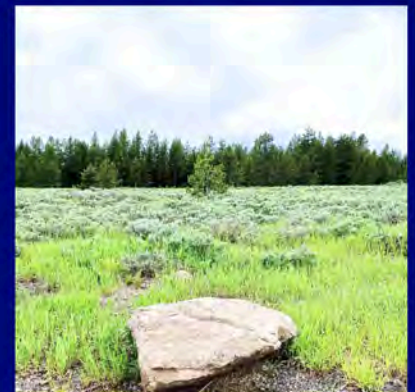
**Mack's Inn with Apartment Over Garage**

4266 Gooding Street  
 MLS # 2153381  
 \$1,500,000



**4+ Acres - Commercial**

TBD Yale Kilgore  
 MLS # 2146223  
 \$740,000



**SHOTGUN AREA**

3994 Dirk Drive  
 MLS # 2142308  
 \$169,900



**1.88 Acre - SHOTGUN**

4140 Pine Crest  
 MLS # 2152567  
 \$215,000



**Active Nightly Rental**

4119 Huckleberry Lane  
 MLS # 2154498  
 \$599,900



**Active Nightly Rental**

3549 Old Shotgun Rd  
 MLS # 2155182  
 \$699,900

## LIST RIGHT

I prepare a strong value proposition for potential buyers. We get the cabin in the right condition to list at the right price, then highlight your home's attributes with professional photography, drone footage, and/or 3D tours as appropriate to the market.

## BUYER PREPARATION

### MARKET READY

- Get your financing in order and be market ready with a pre-approval letter
- Stay on top of new listings so you hear about the right property before its gone
- Keep ready to hit the ground running and compete with high market activity

### NEEDS AND WANTS

- Dial into what you are looking for in a property and location.
- Delineate between what is essential and what is negotiable
- Align expectations with your budget and market availability

### TRANSACTION MANAGEMENT

- Draft and submit offers quickly to avoid missing out
- Negotiate for the best deal
- Stay on top of deadlines and submissions to keep the deal flowing
- Coordinate with transaction participants to adjust to changing circumstances and keep the deal alive