


THE CALDERA TIMES

We  Island Park

Volume 1 Issue 2

www.TheCalderaTimes.com

June 2023 Edition

Inside This Edition

Crossword	Page 2
Restaurant Hours	Page 6
Local Events	Page 8
Toy Rental Companies	Page 9
Spot of the Month	Page 11

Follow us on Facebook



Read for free at:

www.TheCalderaTimes.com

Have an event coming up? Hiring? Know someone who should be highlighted? Want to write to the editor?
Jen@TheCalderaTimes.com 406.209.0022

Yellow Sally River Shuttle For all your Transportation Needs!



This is a family story, one filled with hardship, perseverance, triumph, and success. It's a single mothers journey with the support of a community that tugged at my heart strings, so I'd like to share it with you!

Lynette Baum went to school at Utah State University in Logan, UT and graduated with a degree in Landscape architecture. At the time, her family lived near Ashton, Idaho, so she moved back to the old farm house her parents had recently restored, with her girls. Obviously, raising children is expensive, so Lynette took on lots of side hustles while she looked for work that fit her degree. One of those side hustles was to run fisherman to and from the river for a little extra money so she could provide for the kids sporting activities.

It was her daughter, Emily, who was in high school at the time, who pushed to make it a full time family business. Together with Audrey, Kelley, and Blanca, this little family started in just their old Volvo station wagon transporting fisherman to chosen destinations in our beautiful Caldera in 2013. Every year they grew, and every year they added employees and more vehicles. And, in 2015 even added shuttles to the Bozeman, Idaho Falls, and Jackson Hole airports.

Then Emily got cancer. And, while I wish this story had a happier ending, Emily passed. The amazing community of Ashton rallied and supported this little family, both financially and emotionally. While Audrey has been a key piece of the business all along, she stepped up and completely took over for the 6 months Lynette needed to see Emily through to the end. But, Yellow Sally River Shuttle has persevered. Lynette purchased the old gym in Ashton, added several large vans, nearly 25 drivers, and lots of new friendships from all walks of life, and, they still use Emily's car she donated to the business when she passed.



This little company offers an array of services that would astonish most! They have taken a dog to the kennel, delivered cyclists to the Continental Divide, and transported wedding parties, to name a few things. If you are in need of a driver, for even the strangest of reasons, reach out to Jordan Wilson, Katie Litton, or Liz Hepner, who are all fantastic managers! They'll get a driver assigned, or call on one of the family or friends that jump in to make this business a success to get you or what you need where you need it! As Lynette says "It takes a village".

YellowSallyRiverShuttle.com or (208) 821-0906

E-Bike Rentals In Island Park

It's always exciting when new technology and businesses converge to provide recreation and fun that can be enjoyed by locals and visitors alike. This summer, E-Bikes arrived in Island Park.

Our area provides thousands of miles to enjoy these on. Forest Service allows E-bikes on all motorized trails and roads, they are allowed within Yellowstone National Park anywhere traditional bicycles are allowed, and class 1 and 2 bikes are allowed in Idaho State Parks on Department administered trails and paths, to include our own Harriman State Park.

As with any form of transport within this areas, there are rules! Within the National Parks, you may only use the motor to assist pedal propulsion, meaning folks, you have to use the pedals!! You must obey the speed limits. They are not allowed in wilderness areas, or on oversnow areas in the winter.



There are two companies that will be offering two different styles of bikes for rent. The bikes are as different as the businesses renting them!

The Powerfly 4 Gen 4 Trek Bike is being offered by Island Park E-Bike who are located at 3413 US 20 in the same building as Tied to Nature. The bike itself contains a powerful Bosch motor with a smooth shifting Shimano drivetrain capable of speeds up to 20 mph.

Adam Brubaker and his team will be open by appointment only at (208) 351-5932 and can deliver, for an additional fee, to the location of your choice for your riding enjoyment.

Lakeside Lodge will be renting the Bakcou Mule Fat Tire equipped with the Bafang Ultra M620 motor with metal gearing which provides the option of shifting from 1,000 watts to 750 watts to become class 1 compliant and is capable of speeds up to 25 mph. The team at Lakeside is available 7 days a week from 9 am to 5 pm at 208-558-9770, or stop in at 3857 Lakeside Lodge Lane. While they won't deliver, there are some great trails to ride directly from here, or haul them yourself to your favorite location.



SCAN ME

For a quick look at the trails available to ride, scan the QR code for the link to the website to browse them, don't forget, they are allowed on almost all bike trails.

Crossword

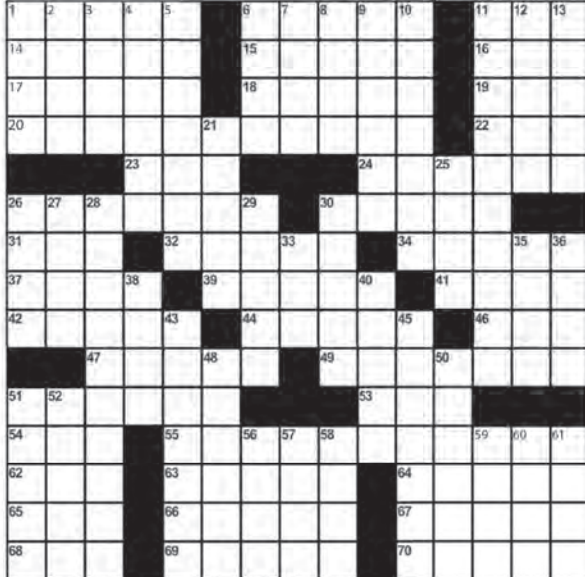
ACROSS

- 1) Lindsay of "Machete"
- 6) "You're a Grand Old Flag" composer
- 11) Gig gear
- 14) Coffeeshop allure
- 15) Antipasto bit
- 16) Birth-named
- 17) Reason to award a Navy Cross
- 18) Muscular power
- 19) Lyricist Gershwin
- 20) Banned Sinclair Lewis book
- 22) Karaoke need
- 23) Milky Way unit
- 24) Give laughing gas to
- 26) Cash-back deals
- 30) Onion in cocktails
- 31) " _ y Plata" (Montana motto)
- 32) Sniggler
- 34) Travels like Huck Finn
- 37) Do some logrolling
- 39) Like a wink and a nod
- 41) Au naturel
- 42) Ply with drink
- 44) Inquisitor_ deTorquemada
- 46) Leg it
- 47) Lock of hair
- 49) Take a nosedive
- 51) Software instructionfile
- 53) Assayer's sample
- 54) Pipe bend
- 55) Banned Grace Metalious book
- 62) Bro, say
- 63) Comhusker Statecity
- 64) Mete out
- 65) As well
- 66) Fired up again
- 67) Bulgaria's capital
- 68) Sloppy digs
- 69) Blissful spots
- 70) Grown-up cygnets

DOWN

- 1) Wash up
- 2) Graduate exam, maybe
- 3) Holly who dethronedRonda Rousey
- 4) Microscope slide creature
- 5) Do a voice-over
- 6) Nostra
- 7) Lena of "Alias"
- 8) Subtle suggestion
- 9) Not at all eager
- 10) Time for resolutions
- 11) Banned George Orwell book
- 12) Cause for a raise
- 13) Hippie sign-off
- 21) Do a host'sjob
- 25) Totally blah
- 26) LBJ son-in-law Charles
- 27) Clinton's canal
- 28) Banned Brendan Behan book
- 29) Shutterparts
- 30) Gussy up
- 33) Prefix with "sphere"
- 35) Tried partner
- 36) Mailed off
- 38) Lady's man
- 40) Condor's gripper
- 43) Presidentpro_
- 45) Do onebetterthan
- 48) Appeared to be
- 50) Laid-back
- 51) Takes five
- 52) "The Waste Land" author
- 56) Where the Clintons met
- 57) Like a dime, in a saying
- 58) Nosebag morsels
- 59) Sporty Italian car, briefly
- 60) Slot insert
- 61) Depotpostings,briefly

BANNED BOOKS By John M. Samson



Slight correction from the May edition! There was a conflict for the pancake breakfast, it is the annual Little Church in the Pines Pancake Breakfast fundraiser event. Details will follow, but please plan on attending that breakfast, then come on out and enjoy the first Island Park parade in more than 30 years themed for the Island Park Founders.

Watch the procession as community organizations, families, and local businesses come together for a festive atmosphere.

The mayor has agreed to be the Grand Marshall, there is support from the City, Fremont County, forest service, and the sheriff's department. This event will be a wonderful reminder of the rich history and community spirit of Island Park!

Mark your calendar for August 26th, location will be announced soon, for additional information, to volunteer, or to register to participate, visit www.IslandParkParade.com

EAST SUMMIT
EXCAVATING

SERVING EAST IDAHO
EXCAVATING, GRADING, SEPTIC

Call or Text for a Free Quote
(208) 569-6017

Electric

208-351-7058
Electrical Contractor
Serving all of Southeast Idaho

SAWTELLE
PROPERTY
MANAGEMENT

Your Premier Short-Term Property
Management Solution
Island Park, Idaho

Let us help you get the most out of your
short term rental property!

208.313.1701 or E-mail Tyler@sawtellepropertymanagement.com

The Anatomy of a Perfect Hike

We have some of the most beautiful hiking trails in the world right here in Island Park, and if that's not enough, Yellowstone Park is a stones throw away for all the hiking you can imagine. Spectacular views, wild flowers, rivers, lakes, streams, and wild life of all kinds can be your picture perfect day.

There are some dangers associated with hiking in the wilds we call home though. The woods around us are still wilderness and being prepared can save your life. You might think it's silly if you're just going out for a quick day hike, but you should always consider a pack with the following items:



- Map
- Bear Spray
- Sunglass and a hat
- Sunscreen
- Flashlight
- Waterproof matches and/or lighter
- Snacks, high energy bars, granola, candy, or fruit
- Extra clothing, including a bright colored rain poncho. Temperatures can change dramatically, especially in the mountains with elevation changes. For every 1,000 ft the temperatures generally can drop about 3 to 5 degrees.

The recommendations are, that you never hike alone, take frequent rests, drink plenty of water along the way, let the slowest person in your group set the pace, wear appropriate clothing and sturdy hiking boots, and consider a hiking pole or walking stick. Be mindful of your surroundings, and don't wear ear pods so you can hear the woods or the wild life. Make sure you have a plan, in case of an emergency, what will your group do? If someone is injured or a medical emergency occurs, how will you handle it? Be sure to leave an itinerary with a friend or family and check in with them upon your return.

Have small children in your group? You might consider some advance planning. Teach them what to do if they become lost or disoriented. Make sure they have the tools to survive! Pack their backpack with their own things, water, snacks, a whistle, and a brightly colored poncho. If you come across a predator, make sure your child knows the dos and don'ts of wildlife interaction. Teach them not to hide, but stay in plain sight, sing loudly to themselves, and blow their whistle with sharp blasts every 3 to 4 minutes. Remind them to stay hydrated, calm, and to stop moving. Practice these things with them so the chances of finding them go up exponentially.

The Gallatin County Search and Rescue has compiled a list of Lost Person Behaviors for a variety of different personalities on their Facebook page. Persons with Dementia, Gatherers, Hikers, and Small Children all have common threads you will need to provide searchers to be found, but there is unique information about each, if you can provide, that will assist in locating them more quickly and efficiently, which can lead to a more desirable outcome. A quick search of Lost Person on their Facebook page will bring up all the articles, read up on the topic or topics that best fit your group before heading out!

Scan the QR code for the link to trail maps for hiking in the Island Park area. These are labeled for difficulty so you can plan your day. **Please remember, most of our area gets very poor cell phone reception, you should not rely on that for your map, use a paper map, or download your route!**



SCAN ME

ISAAC WALKER
OWNER

CALL OR TEXT FOR A QUOTE

208.243.0049

CLEARDIAMONDWINDOWS21@GMAIL.COM



CLEAR DIAMOND
WINDOW CLEANING

I SAW THAT
CUSTOM CHAINSAW
CARVING
TREE REMOVAL
MISC. CABIN REPAIR
AL PARKS
CALL/TEXT FOR FREE ESTIMATE
208-200-9404

Courtesy of carynesplin.com



Mushrooms

This could be a rare year. It's usually well past mushroom season here in Island Park, but we had a really late, really wet spring, so you could be in luck. Keep an eye out while you hiking! You could find Morels, chanterelles, or meadow mushrooms during your excursions.

Keeping in mind that mushrooms are part of nature's recycling system, be on the look out under trees, on dead and living trees, near fallen trees and stumps and in generally darker, moist areas of the forest. There are many more kinds of poisonous mushrooms than those that are edible, be sure to identify your spores correctly, even experienced pickers can make a mistake.

You should also never eat raw mushrooms. Only try two cooked teaspoons of a mushroom variety when trying it for the first time. Wait for 24 hours after trying it to make sure there is no delayed allergic reaction. It is best not to drink alcohol the first time you try a new mushroom species because this increases the likelihood of an allergic reaction.

Have fun, but be safe!

ISLAND PARK SOAPS
 PRICE LIST
 PRICE IS PER BAR



208-521-1936

50 BARS+	\$ 1.85
100 BARS+	\$ 1.75
150 BARS+	\$ 1.65
200 BARS+	\$ 1.55
250 BARS+	\$ 1.45
300 BARS+	\$ 1.45

SOAP LABELS ARE HANDMADE AND ORDERED WHICH TAKE A WEEK AT LEAST IF NOT A LITTLE LONGER

Summer Rodeos

Who doesn't love a summer rodeo? The smell of horses, the thrill of the ride, watching that rope swing just right. It's always been a favorite. There are some fantastic options most nights of the week throughout our summers here in the Caldera!

One of the favorites is **Meadow Vue Ranch**. This is a summer youth horse camp that invites the public two nights a week to show off some of the skills they have learned. After starting off with the rodeo events such as bull riding, saddle bronc riding, bareback riding, barrel racing, pole bending, roping, kids calf riding, and the calf scramble, they rustle up dinner featuring hand cut fire grilled steaks, dutch oven chicken, dutch oven potatoes, baked beans, corn salad, coleslaw, cornbread, biscuits, and peach cobbler and ice cream for dessert. Entertainment during dinner is cowboy songs, old and new, by Fall River Boys, and after dinner stay and enjoy the music, and the scenery of Henry's Lake Idaho, or get up and dance, if you don't know how, they can teach you, line dance or country swing! These start June 24th and run through August 5th on Wednesday and Saturday nights. Buy tickets, or find more information at Meadowvueranch.com/rodeo-%26-dinner.

The other is the **Wild West Yellowstone Rodeo** part way to West Yellowstone in Montana on Hwy 20. Every Wednesday through Saturday from mid June to August come watch cowboys and cowgirls compete in events such as bull riding, team roping, breakaway roping, bareback riding, saddle bronc riding, and a calf scramble for the kids. For more information, or for more information go to <https://westyellowstonerodeo.com/tickets>.



Annual Fun Run and Marathon Dates

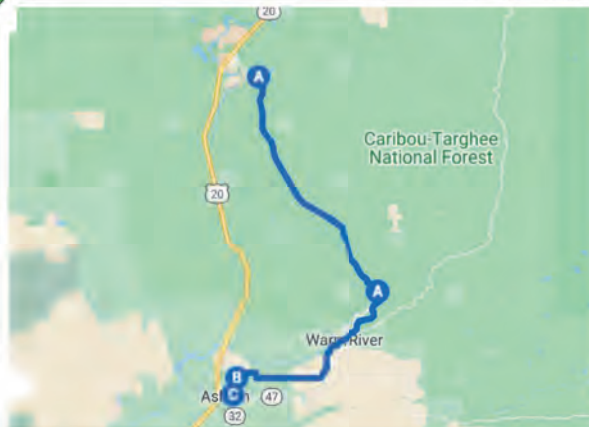
If you enjoy these kinds of events, there are several in our area you might consider signing up for.

June 24th is Yellowstone Trail, where you will start the course near the West entrance and gateway to Yellowstone National Park. This route is surrounded by three national forests, blue-ribbon trout streams, and beautiful mountain lakes with breathtaking scenery that takes place right outside the world's first National Park on the trails of Custer Gallatin National Forest. For more information, or to sign up, go to Runsignup.com/Race/MT/WestYellowstone/runyellowstone.

July 1st is the Annual Island Park Sawtelle Fun Run, which is a benefit for The Island Park Community Trail Project was a concept taken into reality by the Ashton/Island Park Ranger District and the All-American Sawtelle Fun Run Committee. Their goal was to establish a non-motorized route to connect Harriman State Park to Henry's Lake using existing National Forest System trails identified as key connectors for the proposed routes to provide non-motorized opportunities for visitors, guests and locals who seek this type of outdoor recreational experience. The completion took the combined efforts and contribution of funds from the annual All-American Sawtelle Stampede Fun Run and the many dedicated volunteers who have graciously committed their time & labor. You can find more information, or register to participate at IslandParkSawtelleFunRun.com.



July 15th is the Mesa Falls Marathon, rated the best Idaho marathon by runners. If you have not run this before, this is an amazing course. USA Today, in a 2013 article, listed it as one of the Amazing Races to Run before you die. With a starting elevation of 6135 ft, the course features a blend of running surfaces from blacktop and pavement to packed trails along Warm River, running generally downhill to a finishing elevation of 5253 ft. Spectacular views of Targhee National Forest, Teton Mountains, Lower Mesa Falls on the Henry's Fork of the Snake River, and Warm River all combined with the beginning terrain of sagebrush and evergreens ending in flowing farm ground provide a breathtaking backdrop. For more information or to register to MesafallsMarathon.com.



Horseback Riding

A great family activity that most folks don't get to partake in at home is horseback riding through the mountains. It's a pleasant way to spend part or all of your day! We have cowboys ready, willing, and able to take you on a scenic day trip

Dry Ridge Outfitters are a unique local brand! They have been guiding horse rides in Idaho as a family for over 70 years, and most of their string of horses are born right on the ranch, raised and trained by them. These Cowboys will take you through some of the most beautiful parts of Harriman State Park, and can tailor the ride to your group size and needs. To learn more visit DryRidgeHarriman.com/horse-rides.

Yellowstone Horses at Eagle Ridge Ranch offers a wide variety of options for day trips. Mid May through mid September, Monday through Saturday, these good folks offer morning trips, afternoon rides, and evening outings paired with a western cookout dinner. All are available to choose and book at their website here Yellowstoneworld.com/schedule-rates/.

Diamond P Ranch is on the way to West Yellowstone, but is the only outfitter west of West Yellowstone in Montana with permits to guide horseback rides into the Gallatin National Forest. You can book morning, afternoon or evening rides for an overlook into Yellowstone National Park and the Continental Divide, or check for a private ride. More information can be found at TheDiamondPRanch.com/rides/.

Creekside Trail Rides might be the place to go if you want a shorter ride, or a wagon ride. One hour horseback rides start at 9:30 am, run through 5 pm Thursday through Saturday and walk-ins are welcome. You can schedule your ride here through Westyellowstonerodeo.com/creekside-trail-rides



ASAP SEPTIC PUMPING

208-390-7559

**Full time Septic Pumping In Island Park
Tank Locating, Digging and Inspection
for STR and Real Estate Sales Inspection**

24 Hour Emergency Services

LOOK FOR THE BIG RED TRUCK

Asapumping.com

Open Year Round Restaurant

Breakfast Buffet Fri-Mon
8am-11am

Lunch 11am-5pm

Dinner 5pm-9pm

Tavern

Full Bar w/ Patio Seating

Pool Table

Shuffle Board

Lodging

Cabins

Motel Rooms

Campground

C-Store

Cold Beverages

Clothing

BBQ Supplies

Gifts

Miller Ranch Beef

Lakeside Rentals

9am-5pm

Reserve your rental online today!



208-558-9770



UPCOMING EVENTS

June 17 - Tail Hooked Whitey 8pm

June 24 - Crush 8pm

June 30 & July 1 - Unknown Band 8pm

July 4 - Perfect Chaos 8pm

July 4 - Fireworks 10pm

July 8 - OCD Band 8pm

July 15 - Perfect Chaos 8pm

July 21 & 22 - Satin Steel 8pm

July 22 - Fireworks 10pm

July 29 - Tail Hooked Whitey 8pm

We Proudly Serve

Idaho Grown

Miller Ranch Beef



SEA-DOO | can-am | ski-doo



www.lakesidelodgeandresort.com

Open Year Round Restaurant
Breakfast Buffet Fri-Mon
8am-11am
Lunch 11am-5pm
Dinner 5pm-9pm

Tavern
Full Bar w/ Patio Seating
Pool Table
Shuffle Board

Lodging
Cabins
Motel Rooms
Campground

C-Store
Cold Beverages
Clothing
BBQ Supplies
Gifts
Miller Ranch Beef

Lakeside Rentals
9am-5pm
Reserve your rental online today!

UPCOMING EVENTS
June 17 - Tail Hooked Whiskey 8pm
June 24 - Crush 8pm
June 30 & July 1 - Unknown Band 8pm
July 4 - Perfect Chaos 8pm
July 4 - Fireworks 10pm
July 8 - OCD Band 8pm
July 15 - Perfect Chaos 8pm
July 21 & 22 - Satin Steel 8pm
July 22 - Fireworks 10pm
July 29 - Tail Hooked Whiskey 8pm

208-558-9770

UPCOMING EVENTS

We Proudly Serve Idaho Grown Miller Ranch Beef

Lakeside Lodge

www.lakesidelodgeandresort.com

Caldera Restaurant Days and Hours

Anglers Lodge & Riverfront Restaurant
3363 Old Hwy 191 208.558.9555
Dinner 5 pm to 9 pm Every Day
Saturday and Sunday Brunch 10 am - 2pm

Cafe Sabor
4298 Hwy US-20 208.558.9300
Wednesday - Saturday 11 am - 9 pm
Sunday 12 pm - 8 pm
Closed Monday and Tuesday

The Cafe at Island Park Lodge
4149 N Big Springs Loop Road 385.227.1197
Wednesday - Sunday
Breakfast 7 am - 10:30 am
Lunch 11 am - 3 pm

Connie's Restaurant
4130 Quakie Lane 208.558.6987
Sunday 3 pm - 9 pm
Monday and Thursday 11 am - 9 pm
Friday and Saturday 11 am - 10 pm
Closed Tuesday and Wednesday

Happy Anglers Cafe
3340 Hwy 20 208.497.9455
8 am - 12 pm

Lakeside Lodge
3857 Lakeside Lodge Lane 208.558.9770
Daily
Lunch 11 am - 5 pm
Dinner 5 pm - 9 pm
Breakfast Buffet Sat and Sun 8 am - 11 am

Meadow Creek Lodge
Meadow Creek Road 208.351.2787
Check Facebook for opening

The Parlor at Mack's Inn
4169 N Hwy 20 208.558.2450
Tuesday - Saturday 11 am - 9 pm

Pond's Lodge
3757 Hwy 20 208.558.7221
Main Kitchen: Wednesday - Monday 11 am - 9 pm
Pizza Kitchen: 7 days a week 11 am - 10 pm

Springhill Suites Island Park
4292 N Highway 20 208.558.2400
Thursday - Monday 4 pm - 10 pm
Closed Tuesday and Wednesday

Squatchee's Soda
3372 N Hwy 20 208.360.1022
Thursday - Monday 7:30 am - 2 pm

Subway
4141 Sawtelle Peak Rd 208.558.9884
Monday - Saturday 8 am - 3 pm
Closed Sundays

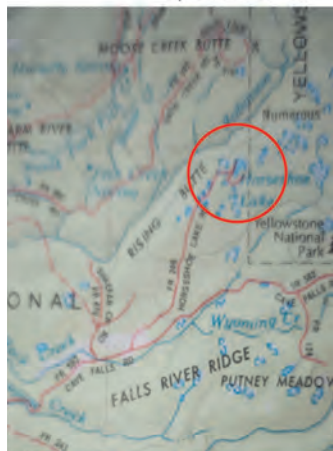
Twisted Pine @ Historic Phillips Lodge
3907 Phillips Loop 208.390.8303
Reservations Only

Trout Hunter-Last Chance Bar & Grill
3327 Hwy 20 208.558.8006
Daily
8 am - 9 pm

Day trip to Horseshoe Lake

By David Larson

We all know about the large lakes in the area and some of those out west and north. But are you looking for a nice wooded quiet lake to swim, float a canoe, kayak, or even a paddleboard with less people and no motorized boats? Consider a visit to Horseshoe Lake.



The route to the lake is located off of the road to Cave Falls (FR 582) from Hwy 47 (Mesa Falls Rd) in the Ashton area. The turnoff is not surprisingly called the Horseshoe Lake Or Forest Road #246. From Island Park, its about a 2 hour drive each way. The lake has been calm and inviting all of the times that I have visited there.

Like other roads in our area, it can get rough and dusty in the summer, but once you arrive you will find a calm lake with good access to park, launch a boat, swim, picnic, or also camp. Check out the old growth forest on the way, and if you're a wild berry lover, there are opportunities for that as well in the late summer- (I'm not saying where exactly!). The lake also has fishing, and a trail around much of the lake. Enjoy!

Island Park GROCERY DELIVERY

Order and pay online

WALMART REXBURG
ALBERTSON'S REXBURG
BROULIMS REXBURG

Order and pay for your groceries at any of the above 3 locations. We will pick up and deliver (fridge items will be put away) prior to your arrival. Pickup days may vary please call prior to ordering for schedule and pricing.



Dennie
(208) 571-5781
Colleen
(208) 317-4872

The BLM Closure Plan Legal Overstep??

The BLM closure plan is still a hot topic and of great concern for any of us that live in or use the trail systems in Fremont, Teton, Bonneville, Madison, Jefferson, Bingham, Power, and Clark Counties. The article printed in last months edition of The Caldera Times can still be read in full online, but we wanted to remind you that the plan affects ALL modes of transportation, from highway vehicles and UTV types, to foot and bicycle traffic.

Karen Schumacher printed an article in the Gem State Patriot News on May 14, 2023 that is a bit more disturbing, with a specific reference to the plan being an attack on OHV and non-OHV use on public lands, wherein she points to page 135, Appendix C, of the Travel Management Plan Draft EA as evidence of that. Most of the charts and information within the document show the impact of how the land is damaged and the affected species. The solution is, of course, severe reduction, and in some cases elimination, of human uses on public lands.

Ms. Schumacher presents a strong case that the BLM is acting outside of its legal authority and does an outstanding job of outlining that opinion in detail. Her references and arguments are well researched and would be worth the time of anyone wishing to further educate themselves on this topic. You can read her article in full here: <https://gemstatepatriot.com/blog/blm-lawlessness-continues/>.

The end result of this new BLM plan, if placed into action, could have a devastating economic affect on Island Park. So many of us come to Island Park to recreate, in one way or another, on the trail systems here. You may not agree with the usage of ATVs or UTVs, but you may hike, or bike. All trails will be affected, all of us will pay the price.

We still have until July 10, 2023 to comment. I urge all of you, residents and visitors alike, to go to <https://eplanning.blm.gov/eplanning-ui/project/2022394/595/8003548/comment>, regardless of how you use the trail system, choose Alternative A and make your comment to keep our trail system intact.

Community Side by Side / UTV Ride July 2, 2023

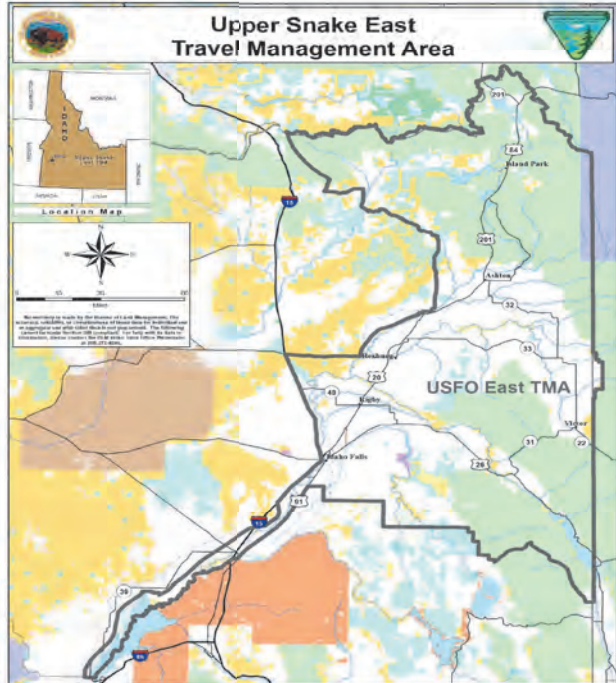
This will be about 105 mile UTV/Side by Side ride. We are still working out details! But, we will be riding from Stamp Meadows parking lot. Plenty of room for trucks and trailers. We will head west on Old Shotgun Road then we will work our way down the mountain into the desert of Sand Creek. We will be able to refuel in St. Anthony and grab a bite before we head back up and meet at Lakeside for dinner if you desire! **YOU WILL NEED TO BE STREET LEGAL and HAVE AN IDAHO OFF-ROAD PERMIT.**

For updates, more information, and links for Idaho Permits as the time nears, check on Facebook. Search Island Park Idaho events, it is labeled as Island Park - St. Anthony and back ride, hosted by Dustin Neilson.

It's a busy time of year, so if you need accommodations, you should book them in advance, campgrounds, hotel rooms, or short term rentals are all great options!



Excavation - Plumbing - Utilities
Gravel - Roadbase
208-223-2382
mcccloudconstruction@gmail.com



Island Park's Newest Little Souvenir Shop With the Biggest Heart

Ready to take home your unique souvenir or gift from your visit to Island Park? The brand new Island Park Souvenirs and Gift Shop is open! Located at 3519 Yale-Kilgore Road, our littlest shop with the biggest heart offers a wide range of specialty and one-of-a-kind items to commemorate the memories you make in our beautiful area.

Whether it's a t-shirt, hat, postcard, or trinket, we have something for everyone. Friendly staff will be on hand to help you find the perfect gift or keepsake to bring home.

Why wait? Come see us and take home your piece of Island Park. Can't wait to see you!



Henry's Fork Fish Report

June 11, 2023

By Ben Blankenship



It's tricky out there. Fish numbers are down from the box canyon to Ashton as guides and enthusiasts alike are coming up short. Extreme winter conditions have contributed to a major decline in total fish population. In years prior, the estimated number of trout per mile amounted to 4,000. Today it is estimated to amount to a dismal 1,000 fish per mile between Last Chance and the Island Park Dam.

Water conditions are good as flows are holding at 749 CFS. The water is clear and coloration is good.

There are fish in the system but in lower numbers than usual this time of year. You'll have to seek out all good trout water and hit every bit of it.

Success is possible for those up for the challenge and for those who are patient and consistent.

Fish are holding in the deep runs, riffles, and wave trains. They're out there in their usual spots, there just aren't as many of them.

Hit the deep runs, foam, and feeding lanes and cover water. You'll hook up if you're persistent and working the water. Hit your favorite spots and anything that might hold trout. Be aggressive.

Recommended flies:

Dries: Stonefly 14-16, Flax olive or rust #16-20, Black caddis #18-20, Stimulator # 16, and the occasional salmon fly.



Nymphs:

Go big and buggy up top with a small treat below. Be sure to work all levels of the water column.

Pat's rubber legs, zonkers and twenty-inchers are great attractors followed by the small tasty stuff.

Zebra midge #18-20, BH PT #18-20, BH collared PT #16-20, shop vac #18-20, Green

There are fish in the system. Low numbers make for slow days but the available habitat is already producing some large specimens for those willing to work.

EVENTS IN ISLAND PARK

We hope to see you around town this summer at some of the cool events going on in our area!

Island Park

- June 17
- July 1
- July 4
- July 14
- July 15
- July 21 & 22
- July 22
- August 4 & 5
- August 6
- August 7
- August 11 & 12
- August 16
- August 26
- September 1 & 2
- September 9
- September 16
- Memorial to Halloween
- Memorial to Labor Day
- October 28

- Yoga at the Pavilion
- Sawtelle Fun Run
- Fireworks
- Liberty Quartet
- Mesa Falls Marathon
- Island Park Festival
- Pioneer Days – Fireworks
- Quilt Guild - Display and Sell
- I ❤️ IP - IP Chamber event
- Daisy's Angels fashion Show
- Swaptastic Swap Meet
- Targhee Women's Charity Auction
- Island Park Founders Parade
- Island Park Festival
- Wine in the Woods
- Brogfest
- Music (Saturdays, some Fridays)
- Shotgun Sundays
- Halloween Costume Party

- Sawtelle Resort Pavilion
- Sawtelle Peak Rd
- Lakeside Lodge
- Little Church in the Pines
- Mesa Falls Scenic Byway (start)
- Sawtelle Resort Pavilion
- Lakeside Lodge
- Marriott Conference Room
- Sawtelle Resort Pavilion
- Hines Residence
- IP EMS building
- Marriott Conference Room
- Big Springs Loop
- Sawtelle Resort Pavilion
- Harriman State Park
- Shotgun Bar
- Lakeside Lodge
- Shotgun Bar
- Lakeside Lodge

West Yellowstone

- Thursdays June to September
- July 4 & 22
- July 15 to 17
- August 2 to 13
- August 4,5 & 26
- August 12
- August 26
- September 16

- West Yellowstone Market
- Music in the Park
- Wild Bill Days
- Mountain Man Rendezvous
- Music in the Park
- Horseshoes for Hero's
- Wretched Mess Arts Fest
- The Happening

- Museum Lawn
- Heritage Park
- WY Rodeo
- West Entrance (YNP)
- Heritage Park
- Hi Country Tavern
- Heritage Park
- Union Pacific Dining Hall

For more information about these events, check out our website at:

IpIdaho.com/events



Mountain Life
Team



Recreation Maps



Scan to download the Avenza Map App. Create an account, it's free. Find the Island Park Motorized Recreation Map, both North and South for all of the Island Park area. Find your trails and enjoy yourself. Please, don't forget, cell coverage in our area is difficult in most areas, don't count on it for your navigation. Use a paper map, or download your map to be sure you can use it.

LAKESIDE RENTALS
Island Park Reservoir

208-558-9770

SEA-DOO can-am ski-doo

Equipment Rental Island Park

Lakeside Lodge

3857 Lakeside Lodge 208.558.9770

6 seat Defender	\$409
4 seat Commander	\$389
Sea-Doo Spark/Trixx	\$250
Sea-Doo GTX Pro 130	\$309
Boats Starting at	\$425
Kayak 1 Seat	\$ 50
Kayak 2 Seat	\$ 80
Stand Up Paddleboards	\$ 50
Bakcou Mule Fat Tire Mountain E-Bike	\$165



Island Park E-Bike

3413 US Hwy 20 208.351.5932

E-Bike	1/2 day \$85	Full day \$125
Kayak	3 hrs \$50	Full day \$90
Paddle Board	3 hrs \$40	Full day \$80
Float Tube	3 hrs \$20	Full day \$35

High Mountain Adventures

4141 Sawtelle Peak Rd 208.558.9572

Razor Trail 900 50"	\$299
Razor XP1000 2 Seat	\$329
Razor XP1000 4 Seat	\$399
Razor Pro 2 Seat	\$349
Razor Pro 4 Seat	\$419
Kayak	\$39
Triple Kayak	\$60
Raft	\$99
Paddle Board	\$49
Float Tube	\$25

Island Park Adventures

3342 N Hwy 20 208.558.7581

Defender Max	\$419
Commander Max	\$399
Maverick Trail	\$299
Outlander Max	\$239
Outlander	\$199
Sea Doo Spark 3-UP	\$229
Sea Doo GTX	\$329



Association goals are:

- Promote respectful Riding
- Respect and keep your distance from wildlife
- Stay on designated trails
- Work with Parks and Recreation to keep trails cleared and open
- Work with local agencies such as BLM, Forest Service and Parks and Recreation to provide summer trails that make a complete loop and do not dead end.
- Work with local agencies to provide trails for OHV over 50 inches
- Encourage registration and stickers

The group is open to anyone that shares a love of this area and the trail systems. Simply email us at TargheeTrailRidersIslandPark@gmail.com to join. We have a Facebook group called Targhee Trail Riders Island Park Idaho where information that regarding upcoming events and important announcements will be posted.

Please join today!

For the Love of Island Park!



**Mountain Life
Team @ MLR**



Our team is excited to say that we're giving back! Our team founded The Mountain Life Charitable Foundation to give back to the community we all love and build an even better town for future Island Parkers. We are fundraising to establish a fund to support residents facing hardships, and to grow an endowment for a community housing program. We will also host or sponsor events to support other local organizations.



Patty Laritz-Bithell
Patty@IpIdaho.com
(208) 846-4846



Tina Crow
Tina@IpIdaho.com
(208) 573-8304



Kristen Andelin
Kristen@IpIdaho.com
(208) 360-8850



Lynette Tingey
Lynette@IpIdaho.com
(208) 851-8474



Shawna Fuller
Shawna@IpIdaho.com
(208) 731-3688



LAKEFRONT
5406 Henrys Lake Road
MLS # 2153024
\$1,195,000



MACK'S INN
4266 Gooding Street
MLS # 2153381
\$1,500,000



4+ Acres - Commercial
TBD Yale Kilgore
MLS # 2146223
\$740,000



Henrys Lake Views
5533 Yellowstone Drive
MLS # 2154434
\$585,000



SHOTGUN AREA
3994 Dirk Drive
MLS # 2142308
\$169,900



1.88 Acre - SHOTGUN
4140 Pine Crest
MLS # 2152567
\$215,000



Active Nightly Rental
4119 Huckleberry Lane
MLS # 2154498
\$599,900



GORGEOUS VIEWS
3337 Eagles View Road
MLS # 2153126
\$215,000

IpIdaho.com



Looking to buy or sell?
Contact The Mountain Life Team
GoTeam@IpIdaho.com
(208) 534-6775



Spot of the Month

By Tom Bithell

Exploring Old West remains has intrigued me ever since I was a young boy. On fishing and camping trips we'd often make stops at places like Chesterfield, Parker or Lewisville to visit the remnants and graveyards of our pioneer ancestors. I was fascinated thinking about what it had been like to live in a time of no electricity, cars or indoor plumbing.



When I got older and could ride off-road motorcycles, it took exploring to another level. I remember the summer of 1983, when a friend and I set out to find the infamous Moonlight Mine outside of Pocatello. We'd heard of the approximate area it was located, but nobody could give us specific directions, so we set about exploring every dirt road off of Pocatello Creek Road to find it. Finally, on our second day, we connected the right roads and dropped down into the forested valley that concealed the legendary mine.

Over the years it became a hobby to find these historical places, studying them on the map, then plan trips to them. It's been quite easy to find enthusiastic friends to join our expeditions, so I thought I might share some of our favorite Old West places to visit if you get the chance. Starting nearest to Island Park and moving outward is Virginia City and Nevada City, Montana. These are easy towns to drive to and popular tourist attractions in the summer months. Virginia City is about 85 miles from Island Park and has a lot of well maintained buildings and relics from the past. Nevada City is 10 miles further and doesn't have as much as Virginia City, but it's still worth the stop while you're in the area. Next is Bannack, Montana. Bannack is about 150 miles from Island Park. It's easily reachable by car as well. Bannack is part of a Montana State Park and you have to pay to get in or camp at the campground. But it is a well maintained historical site with many buildings and artifacts to see. In particular the Hotel Meade is an amazing old building to walk through. You can feel the history in the atmosphere.



You have to go westward near Challis, Idaho to get to the next ghost town site of Bayhorse. The Bayhorse ghost town is a State of Idaho historical site and there is a small entrance fee. You also have to walk around the site as vehicles are not allowed beyond the parking lot. But, it's an amazing and well preserved site. There are historical signs all around to educate yourself all about the history of Bayhorse and its mines. Bayhorse is also near the Land of the Yankee Fork State Park, which has a history center and camping.



If you start your day at Bayhorse it's a great opportunity to spend the day seeing some beautiful country and Old West remains. You can take the easy drive down

Highway 75 from Bayhorse to the Yankee Fork and Custer ghost town site, which is recommended in a 2-wheel drive car. However, the better route is to go west through Challis into the Challis National Forest and down to the Yankee Fork sites of Custer, Bonanza and the famous Gold Dredge. This will require a 4-wheel drive but it's not too rough and no worse than many of Island Parks' forest service roads. You can also take motorcycles, ATVs or side by sides from Challis to Custer and back. The Custer town site is also preserved by Idaho and the local historical society. It's free to visit but donations are accepted in the Saloon or Museum. There are quite a few buildings and sites to walk around too and many historical signs detailing the stories of Custers' past citizens.

Just down the road from Custer are the more scattered remains of Bonanza, another nearby mining town that saw its boom and bust days come and go. About an hour or so from Custer down Highway 75 is the old ghost town site of Boulder City. Boulder City is not maintained and is not so easy to get into. You can park off Highway 75 by Boulder Creek and hike the three miles in, or take in a motorcycle, ATV, UTV or 4WD. But the last mile is very rocky and tough traveling. To be honest I may never have heard of Boulder City had it not been the site where Clint Eastwoods' movie Pale Rider was filmed. I was working in Sun Valley the summer of 1985 when it premiered and it took me over twenty years to get there, but I finally did. There isn't a lot left to see. Mainly the remains of the stamp mill, mining equipment and some cabin ruins are all that linger, but the

Boulder Basin is remarkable. Surrounded by rocky, jagged mountains and at over 10,000-feet of elevation it's hard to imagine how miners lived there through the winter.

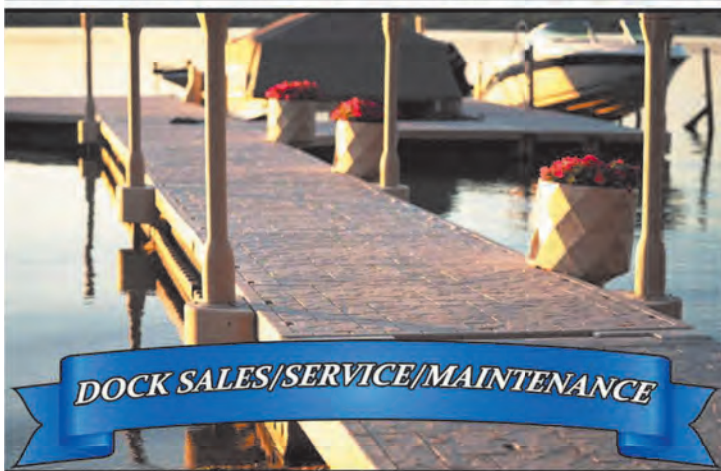
Caldera
Custom

Docks
ISLAND PARK, IDAHO

Last but not least is my all time favorite ghost town - Silver City, Idaho. Silver City is clear over in the Southwest part of Idaho in the Owyhee Mountains. All the remaining buildings and land is privately owned, mostly by descendants of the original settlers. Many owners have restored the old homes and buildings or are working on restoring them, and the town association makes sure everything is restored to the flavor of the period. Exploring the town and graveyard offers hours of entertainment. During summer months - the only time you can get in - the Idaho Hotel is often open and you can stop in for food and drink. If the owner is around and not too busy, he can tell you stories about Silver City and the Hotel for hours. The surrounding mountains also have several mines and some other scant ghost towns and graveyards to explore. Most of these require an ATV or motorcycle to get to. If you're going to plan a trip to visit Silver City then consider Labor Day Weekend. Traditionally the town's people open up their restored buildings and homes for visitors to tour. It's really cool being able to see them inside. The old furniture, appliances and tools on display are really worth seeing.



There are many more ghost towns and Old West sites beyond these places but not enough time to tell about them all. If you're intrigued by exploring the Old West you're in a good place. Grab a map and a metal detector and you're ready to go.



DOCK SALES/SERVICE/MAINTENANCE

208-313-2858
Calderacustomdocks.com

FEATURING

PRODUCTS

MOUNTAIN LIFE CHARITABLE FOUNDATION



ABOUT US

The Mountain Life Charitable Foundation was formed to give back to the community we all love and build an even better town for future Island Parkers. We are fundraising to establish a fund to support residents facing hardships, and to grow an endowment for a community housing program. We will also host or sponsor events to support other local organizations.



MountainLifeCharity.org
Info@MountainLifeCharity.org

CONTACT US

(208)-860-4846
PO Box 441
Island Park, ID 83429

Making Island Park Memories

By Cammi Vanderbeek

With summer in full swing, I'm reminded of what draws me to this beautiful and magical place.

I consider myself lucky that I've had the opportunity to call Island Park a second home for over two decades.

My Island Park story began when my parents discovered the draw of Island Park and built a cabin here. We'd pile in for weekends, and spend time in Yellowstone, at the lake, fishing, horseback riding, and exploring the endless trails via ATV. We've created long-standing traditions and beautiful memories here.

As our family grew, it became harder to fit us all, so we took an opportunity to build a very small guest cabin on my parents' property. Year after year, my love for this amazing place grew. Naturally, I dreamed of having a cabin of my own. As prices continued to soar, cabin ownership continued to feel out of reach.

In the years leading up to my cabin purchase, I sold a business and flipped two homes, during a breast cancer diagnosis. I did the majority of work myself to earn a down payment for a cabin. Finally, in late winter of 2021, after years of saving and planning, I put an offer on a small, outdated cabin, in a highly competitive market. I waited in anticipation to find out if it would become mine.

I was so happy when our offer was accepted. My husband and I spent the entire next summer remodeling the cabin and making it ours. In spring of 2022, Bear Paw Lodge was born! I poured my heart and soul into that little place, it's bear-themed decor and amenities. It's not just a cabin we rent sometimes, it's our happy place, our home-away-from-home.



We spend as much time as possible in Island Park, and hope to spend retirement here, at least during the summer months.

When I'm not in Island Park, I offer Bear Paw Lodge for rent to families from around the world, coming to visit Yellowstone and spend time in this magical place.

I work hard to educate visitors on bear safety, food storage and ways to care for and respect this beautiful area, including its wild, and human, residents. It's a labor of love creating a beautiful, cozy, and comfortable home-away-from-home for my family and the sweet guests I host. From honeymooners, to families, to groups of friends, I'm humbled and honored to play a small roll in the memories made during their stays.



Cabin owners who offer their cabins for rent, do so primarily to help fulfill a dream of cabin ownership. For me, I can't imagine a greater gift than to leave a legacy of cabin ownership for my daughters. If the walls of cabins could talk, they'd share stories of traditions, memories, hopes and dreams, survival struggles and a rich history. If you're fortunate enough to spend time in Island Park, in one of our beautiful cabins, stop and listen to those walls, connect with the natural world around you and you'll fall in love with Island Park like I do, over-and-over-again, every time I visit

Courtesy of carynesplin.com



West Yellowstone • MT CALENDAR of EVENTS

SUMMER 2023

- June 24** Yellowstone Trail 50K, 25K & 10K
- July 4** Independence Day Celebration & Pie on the Porch
- July 4** FREE Music in the Park (Devon Worley Band)
- July 8** Mountain Bike Biathlon
- July 15** Wild Bill Day [at West Yellowstone Rodeo]
- July 15** Heritage Celebration
- July 15** Touch a Truck and Kids in the Park
- July 22** FREE Music in the Park [The Powell Brothers]
- Aug. 2-13** West Yellowstone Mountain Man Rendezvous
- Aug. 4** FREE Music in the Park [Slamabarna]
- Aug. 4 & 5** West Yellowstone Rod Run
- Aug. 5** FREE Music in the Park [Imagine]
- Aug. 5 & 6** Wyoming Desperados Shootout [at Diamond P Ranch]
- Aug. 12** Horseshoes for Heroes [at Hicountry Taverns]
- Aug. 19** POWMIA Ride
- Aug. 25** Christmas in August [at Museum of the Yellowstone]
- Aug. 26** Wretched Mess Arts Festival
- Aug. 26** FREE Music in the Park [Luke Dowler & Midnight Conversations]
- Sept. 10** WYSEF Golf Tournament
- Sept. 16** The Happening



Wild West Yellowstone Rodeo
mid-June - August
Every Tuesday - Saturday

Farmers Market on the Museum Lawn
June 1st through September 28th
Every Thursday 5-8pm



More info - WWW.DESTINATIONYELLOWSTONE.COM/CALENDAR

OUTBACK REALTY

208.558.9500



Jamie Phillips
Broker
(208) 221 2647



Jackie Jensen
Realtor
(208) 390 8303



Riley Hoyle
Realtor
(208) 351 6705



Gay Johnson
Realtor
(208) 351 5204



Gary Dawson
Realtor
(208) 351 3054



Robbins Sub \$1,250,000
5 bed / 3 bath / 1/2 Acre
Garage & Shop



Macks Inn - \$599,900
3 bed / 2 bath / 1 full Ac
Rentals allowed



Buffalo S.H. \$575,000
3 bed / 1 bath
Garage



Old West Rnch \$629,000
3 bed / 2 bath / 3.14 Ac
Rentals & Horses allowed



Shotgun \$975,000
6 bed / 4 baths / 1.93Ac
2 Kitchens. Great Rental



Harris H.S. \$750,000
4 bed / 1 bath / .48 Ac
Great Rental



Ralph T. \$595,000
3 bed / 1 bath / 1/2Ac
Rental potential - Garage



Shotgun \$599,900
2 bed / 2 bath / 3 lots
RV spot / Lg garage



Southshore \$799,900
Waterfront with boat dock
1.45 Acres / Road on lot



Silverhawk \$424,900
Private Dock / 1.54 Ac
Gated Community



Yale Creek \$349,000
Tiny home / 2 RV hookups
.83 Ac / Large trees



Fisher Pointe \$250,000
Views all around
5.35 Acres



Stonegate \$299,900
3.51 ac building lot
Great year round access



The Woods \$279,000
3.04 ac building lot
Heavily Treed



The Repair Shop
Commercial Property
.95 ac / \$2,300,000



Gravel Pit \$999,900
Commercial Property
4.38 Acres

Eagles View \$169,900
Views all around
2.25 Acres

Macks Inn \$199,00
1/2 Ac / RV Lot
PENDING

Ralph T. \$399,000
3 bed / 1 bath / remodeled
PENDING



4th of July Festivities

The 4th of July is a busy time of year in our little community. We swell in size immensely with vacationers from all over the country to enjoy the cool lake waters and beautiful scenery.

One of the most unique events available, either to watch or to participate in, is the boat parade! It's open to anyone who would like to dress their boat up and meet at the Buttermilk Campground boat launch between 7:30 and 8 pm. They then parade around to Lakeside Lodge in time to watch the firework show from the water!



The firework show from Lakeside Lodge is a sight to see, whether you are on a boat, on shore, or at the Lodge! They put on a fantastic spectacle lasting about 45 minutes to an hour. If you plan on watching from Lakeside, you can do so on the lawn, or from their deck, but you should plan on claiming your spot early, or reserving your table! It does get busy. And... don't forget, if you're on the water, even in a kayak, it's DARK, have lights so everyone else can see you as well.



Perfect Chaos from Idaho Falls is scheduled to play this year at Lakeside Lodge starting at 8 pm. So be prepared to dance the night away when the fireworks show is finished!

ATTENTION: HUNTERS & ANGLERS

BEAR SPRAY GIVEAWAY*

* While supplies last.

06/16/23 - Henry's Fork Foundation, 801 Main St., Ashton (11 AM - 7 PM)
 07/22/23 - Island Park Ranger Station, 3726 Hwy. 20, Island Park (10 AM - 2 PM)
 09/23/23 - Driggs Plaza, 60 S. Main Street, Driggs (10 AM - 2 PM)

- Visit the IDFG Bear Education Trailer
- Test your bear spray skills on the IDFG Charging Bear Simulator

RESTRICTIONS

- Current hunting or fishing license
- Photo ID
- 16 years old or older
- Limit one can of bear spray per person
- Limit two cans of bear spray per family



Spring is definitely the time to take a look around and prepare your home or property in case of a fire. It is suggested you take a zone approach.

Zone 1 is the immediate area around your home, which would include attached decks, garages and trees next to the home. Ideally, this area extends at least 30 feet, or to your property boundaries if you have a small lot.

Zone 2 is a secondary buffer and extends out from Zone 1, usually an additional 70 feet or to the property lines. When structures are located on a steep hill, or at the edge of a ridge or bluff, increase the down slope Zone 2 distance up to 200 feet from the home.

Nothing you can do will guarantee your home will make it through a wildfire. Under the most extreme conditions, any home can be destroyed. But what you do before wildfire threatens can dramatically improve the odds that your home will survive. Creating defensible space isn't an option, it is a necessity!



Zone Two Reduced Fuel Zone

Zone One Lean, Clean, Green Zone

- A** **Start** with the structure and move outward. A home constructed with fire resistant building materials should always be considered the primary method of protecting the structure from fire.
- B** **Water** lawn, plants, and trees regularly to ensure they are healthy, especially during fire season. Mow the lawn regularly.
- C** **Remove** dead, dying, or dry vegetation, leaf litter, pine needles, and other debris from yard, roof surfaces, gutters, and other locations where it accumulates.
- D** **If** you have big beautiful trees you want to keep, you can incorporate them into your home's footprint. Then, defensible space will extend around your home and those chosen trees. Prune trees so the lowest limbs are at least 6 feet from the ground, and limbs have adequate clearance from structures.
- E** **Eliminate** ladder fuels and accumulation of woody debris. Remove dense understory layers and thin out the tree canopies. Prune trees so the lowest limbs are 6 feet from the ground.

- F** **Plants** in zone 1 should be carefully spaced, mostly low growing, and low in resins, oils and waxes that burn easily.
- G** **Within** the first 3 feet of the home, use nonflammable landscaping materials, such as rock and pavers. If plants are desired in this space, choose perennial plants with high moisture content.
- H** **Add** protection with "fuel breaks", such as driveways, gravel walkways and healthy lawns.
- I** **Consider** using nonflammable material for fencing, at least for the sections of fence that connect to your home.
- J** **Clearly** mark septic tank locations. The weight of fire trucks can collapse them, immobilize the truck and endanger personnel.
- K** **Identify** your home and neighborhood with clear and easily readable street names and numbers.

- L** **This** area should be thinned out as well, though less space between potential fuels is needed than in Zone 1.
- M** **Create** separation between low-level vegetation and tree branches by removing ladder fuels, reducing the height of low-level vegetation, and/or trimming low tree branches.
- N** **Don't** allow grass and other surface fuels to become overgrown in Zone 2. Typically, surface vegetation in this area should be maintained at a height no greater than 4 inches.
- O** **Locate** any propane tanks, firewood stacks, brush piles, and snags in Zone 2, at least 30 feet from your home.
- P** **Collaborate** with your neighbors for a more effective, community-based approach to wildfire protection.
- Q** **Preserve** natural vegetation along creeks, streams, and rivers. The higher moisture content of riparian corridors reduces fire intensity and can serve as a fire break.
- R** **Provide** adequate emergency vehicle access by maintaining a driveway clearance of at least 20 feet wide 13 feet 6 inches high, with pull outs every 400 feet.

It's Boating Season!!

Some legal do's and don'ts

Boating season is upon us! I really thought we would be boating on the ice this year, but, we are blessed with a full reservoir beneath fantastic soaring peaks. Those of us that live here likely have already scrubbed our boats, purchased the appropriate tags, and launched at least once, whether fishing or for pleasure.

For those of you who are visiting our piece of heaven, please help us preserve it by doing the same. Make sure your boat is clean of any parasites before launching, and be aware, that an invasive species sticker is required for ANY boat you are launching under 10 feet in length. This includes kayaks, paddleboards, and inflatables. You can purchase those at Robins Roost for \$30 if you're motorized and \$7 if you're non-motorized. If you're curious about the program, or the rules, visit idfg.idaho.gov/info/boat-stickers.

Summer is definitely for kids, and on the water is often their favorite place. If they are 14 years of age or under, playing on a kayak or paddle board of any kind, they must be wearing their life jackets, 14 and over must at least have them on board. If the kayak or paddle board is over 10 feet, it must also have an invasive species sticker on it. And both groups are required to carry a whistle by Idaho law.

There are way to many boating rules and regulations to list here, but, if your new to boating in Idaho, or think you need a refresher course, you can find the entire Idaho handbook for boating laws and responsibilities here assets.kalkomey.com/boater/pdfs/handbook/idaho-handbook-entire.pdf. Below are at least the basics you should not forget!



Now a few of the standard items we know we are supposed to have on board, but we sometimes get caught without:

- 1 coast guard approved life jacket on board per each person on board and accessible
- If your over 16', a ring buoy or cushion you can throw (Type IV flotation device)
- Fire extinguisher
- Sound producing device
- And if you're traveling at night, navigation lights

If you are a ski boat, or a wake surf boat there are a few more!

- It takes 3! If you are towing anyone, tubing, skiing, surfing, waking, you must have a spotter.
- A flag, not just on board, but it's up if there's a person in the water!
- There is a no wake zone within 100 feet of a dock, structure, or person in the water! Too often boats go right on past someone in the water too fast, caution is order, lives are at stake.
- Operating at night is prohibited without the proper combination of lights installed by the manufacturer.



Wakes. These are a bone of contention! Home owners around the lake have invested thousands and thousands of dollars in their docks and shorelines. And, the wakes from the boats, particularly the surf boats can cause significant damage. I'm a surfer, and a dock owner, I'm well aware and cognizant. In Idaho, anywhere within 100' of the shoreline is a 5 mile an hour, no wake zone area, and there are plenty of places on the lake to surf without causing damage to other peoples property, so be aware, and please move away. There have been many lakes and rivers that have banned this activity all together, we would like to be able to continue it here.

Jet Skiers, we all know you like the wake behind our boats. We do put up a nice wave to jump and play in. The law says 100 feet behind the boat, that's the closest safety zone for the surfer, skier or boarder. Enjoy yourself, but keep your distance! It is the life of the person being pulled behind the boat you are risking, and often times it is a child.

Lastly, open containers are allowed on boats. But the same rules apply to drinking and driving a boat as to any other vehicle! .08% boys and girls, gets you an OUI, which can carry a maximum fine of \$1,000 and a sentence of up to 6 months in jail. About 40 boat operators a year are arrested in Idaho for OUIs. Other stressors on a boat, including sun, motion, and wind, intensify alcohol and its reaction, think before you drink!



Be safe, and have a great summer!

Come Live the Mountain Life!



Mountain Life

Team @ MLR

IpIdaho.com



Patty Laritz-Bithell
Patty@IpIdaho.com
(208) 846-4846



Patty first fell in love with Island Park when her husband Tom introduced it to her in 1997. They bought their first cabin in 2013 and started their property management company in 2015. Patty's dream of living in Island Park year-round became reality in August 2019. Now she sells the Island Park dream to others.



MACK'S INN

4266 Gooding Street
MLS # 2153381
\$1,500,000



4+ Acres - Commercial

TBD Yale Kilgore
MLS # 2146223
\$740,000



SHOTGUN AREA

3994 Dirk Drive
MLS # 2142308
\$169,900



1.88 Acre - SHOTGUN

4140 Pine Crest
MLS # 2152567
\$215,000



Active Nightly Rental

4119 Huckleberry Lane
MLS # 2154498
\$599,900



LIST RIGHT

I prepare a strong value proposition for potential buyers. We get the cabin in the right condition to list at the right price, then highlight your home's attributes with professional photography, drone footage, and/or 3D tours as appropriate to the market.

MARKET READY

- Get your financing in order and be market ready with a pre-approval letter
- Stay on top of new listings so you hear about the right property before its gone
- Keep ready to hit the ground running and compete with high market activity

BUYER PREPARATION

NEEDS AND WANTS

- Dial into what you are looking for in a property and location.
- Delineate between what is essential and what is negotiable
- Align expectations with your budget and market availability

TRANSACTION MANAGEMENT

- Draft and submit offers quickly to avoid missing out
- Negotiate for the best deal
- Stay on top of deadlines and submissions to keep the deal flowing
- Coordinate with transaction participants to adjust to changing circumstances and keep the deal alive