

Inside This Edition

Crossword	Page 2
Toy Rental Companies	Page 5
Restaurant Hours	Page 8
Fishing Report	Page 10
Local Events	Page 15

Follow us on
Facebook



The Caldera Times
Island Park, Idaho

Read for free at:

www.TheCalderaTimes.com

Have an event coming up? Hiring? Know someone who should be highlighted? Want to write to the editor?
Jen@TheCalderaTimes.com 406.209.0022

Fremont County Commissioner Race

There was a list of questions provided to both of the candidates for Fremont county commissioner. Blair Dance provided his early enough to print last month, but the answers were received from David Bloxham were too late to print. This month, since the elections are nearly upon us, here are the questions and answers side by side.



Blair Dance's experience has prepared him to be a qualified County Commissioner

- Current Fremont County Planning and Zoning Commissioner
- 13 years Board of Director, two terms as Chair, of Ashton Memorial, Inc.
- 10 years Board of Director, two terms as Chair, of the 9 county regional Workforce Investment Board
- Lobbying delegate to the Idaho Legislative delegation in Washington D. C. (4 times)
- Six years Board of Director of East Central Idaho Planning and Development Company, aka The Development Company
- Past member of Fremont County School District Building and Improvement Bond committee responsible for financial presentation.
- 27 years as a Commercial/Agriculture Banker with 13 years banking in Fremont County, bringing Bank of Idaho into Ashton, Island Park & St. Anthony
- 11 years as a private business owner
- Served for 1 year as a Federal District Court Juror to the Eastern Idaho Division
- Served three times as Rotary President and two times Chamber of Commerce President
- 29 years living in Fremont County, 7 in St. Anthony and 22 in Ashton
- Associate Degree Business Finance; numerous American Institute of Banking Courses; AIB Principles of Banking course instructor
- Wife of 45 years Laurie Jo Dance; 5 children; 17 grandchildren



You can read an introduction to Dave Bloxham on Facebook in the Island Park ID Classified and Community info, search Involved Property Owners.

Or, it was published in the Island Park News on April 11, 2024.

May 3rd: Meet your candidates for County offices

Will be held at the EMS building in Island Park, check for updates on times, considering 5 to 7 pm or 6 to 8 pm.

May 21st: Election Day

Island Park registered voters cast their ballots at the EMS building.

1. What are your ideas about growth in the Caldera? What does that look like to you? Include ideas on highway, traffic control, and future development please.

Further growth in the Island Park Caldera is inevitable. When people start moving to an area business follows, demand for services increases and competing expectations become more evident with resources being strained. As a county, we are working as a team to anticipate such issues and do ground work necessary to help address them before hand, if possible, or at least be better prepared when these issues arise.

We are addressing issues of compensation for law enforcement, ensuring Emergency Medical Services (EMS) sustainability, obtaining grants and other funding to improve and expand the capacity of our municipal liquid waste disposal systems, meeting regularly with Idaho Transportation Department (ITD) discussing current and future needs of the highway 20 corridor; including immediate fixes or improvements to resolve congestion and safety issues, obtaining federal grants for connector road improvements, and providing input to the long term plans of ITD. Keeping the counties support equipment current and in good working order is also necessary to prepare for growth. The planning department is actively reviewing, revising and updating the Fremont County Comprehensive Plan and Development Code.

I will help promote controlled and planned development throughout Fremont County. The County Commissioners job is to be the executive branch of county government. The commissioners are for county appointments, have administrative authority, oversee all county departments, commissions, boards and committees. The commissioners are also responsible for the county budget and approving county rules and policies. If elected, I will work with the different department heads to look at county traffic/road issues and make sure the county Development Code is followed and updated as needed.

Continued on Page 9

Mountain Life Charity: Striving for Growth

Mountain Life Charitable Foundation is committed to developing resources that are available to everyone in the Island Park community. We see a need to develop a space for people to gather and spend time together with friends and family. Our charity members are collaborating to cultivate this dream and make it a reality.

The Dream

We envision a property that will have a park for all ages, including a play structure for younger children, disc golf course, lawn space and BBQ facilities. The ultimate property will feature a pavilion with tables for picnicking in the park, as well as a clubhouse with a small kitchenette that would provide an indoor space for those looking to get together for luncheons, game days or other small gatherings. We have created a separate fund within the Foundation to bring these dreams to life.

Continued on Page 6

THE GOLDEN TICKET



1 TICKET FOR \$100 - LIMITED TO 100 TICKETS
Winner chooses the destination!

JAMAICA ALL-INCLUSIVE <ul style="list-style-type: none">• 5 nights for 2 adults• Accommodations at a beachfront resort in Montego Bay• All meals, drinks (including alcohol), gratuities, and non-motorized activities included	TUSCANY - WINE DELIVERY <ul style="list-style-type: none">• 6 nights for 2 adults at a Private apartment in Cortona, Italy• 6 bottles of tuscan wine shipped directly to your home• Dinner show & wine for 2 by a private chef• Wine education and local wine tasting with four varieties of local wines
KENTUCKY BOURBON <ul style="list-style-type: none">• 3 nights for 2 adults in Lexington, KY• Guided tour of 3 local distilleries• Dinner at Jeff Ruby Steakhouse	SEDONA <ul style="list-style-type: none">• 3 nights for 2 adults at the Wilde Resort & Spa• Helicopter tour OR Jeep tour

The travel package provides 2 adults with the choice of Jamaica All-Inclusive, Kentucky Bourbon Experience, Tuscany with Wine, or Sedona. Reservations must be booked at least 90 days in advance. Package requires 24 months after date of purchase. Airfare and ground transportation are not included. Hotel and meal options are subject to change without notice. Group travel and travel with less than 90 days advance booking may be available at an additional cost. Travel during major holidays and Spring Break will require an additional cost. The certificate may not be resold and is not refundable.

Crossword

ACROSS

- 1) Ear-related
6) French military cap
10) Nonstick kitchen spray
13) Pipe-unclogging brand
14) "Expletive deleted" sound
15) Air hero
16) Significant other
18) Inform on the mob
19) Outside the lab, say
20) Port near Gibraltar
22) AKC category
23) Soul singer Cooke
24) Online 'zine
26) Citrus-flavored soda
31) Like pieces in a kit
35) Cyclotron bit
36) Art deco great
37) One to vie with
38) Come-__ (lures)
- 39) Edgar who painted
ballerinas
40) Birthstone for many Libras
41) Female rabbit
42) Attacks from all sides
43) Publisher of author-
financed books
46) Marine One rider (Abbr.)
47) Fleur-de-__
48) Emissions-monitoring org.
51) __ pork (Chinese dish)
54) Fortified Portuguese wines
56) Half a sawbuck
57) 1962 hit for Bobby "Boris"
Pickett
60) Senate vote
61) Often-quoted line
62) Take a sip of
63) Curator's concern
64) __-do-well
65) Lipstick mishap

Compression

1	2	3	4	5			6	7	8	9			10	11	12
13						14							15		
16					17								18		
19										20	21				
22				23				24	25						
				26			27						28	29	30
31	32	33	34				35				36				
37						38				39					
40					41				42						
43				44				45							
			46					47					48	49	50
51	52	53					54				55				
56				57	58	59									
60				61						62					
63				64						65					

DOWN

- 1) Fess up to
2) Heavenly prefix
3) Like Seattle's climate
4) Alamo capturer Santa __
5) One in need of salvation
6) Abstract artist Paul
7) Extra-wide, on a shoebox
8) Dispenser candy
9) Emetic drug
10) Cowpoke's pal
11) Trendy berry
12) French city on the Moselle
14) Myanmar, formerly
17) A bit less than a liter
21) Is in sync
24) Ids' complements
25) All chess pieces (even the queen!)
27) San Fran griddler
28) Twist the arm of
29) ASAP, in the ER
30) Pianist Dame Myra __
31) Alta. or Ont.
32) Co-host of Strahan
33) "Mrs. Bridge" author __ S. Connell
34) Muslim leader
38) Klutz's cry
39) Napoleons, bombes, etc.
41) Henna rinse, e.g.
42) Oft-forgotten part of a 45
44) "The buck stops here" president
45) Tickle pink
48) Wipe away
49) Shells, but not BBs
50) "My Name is __ Lev"
51) Yucatan dweller
52) Ride-requesting app
53) Do some ushering
54) Roman Cath. title
55) Mosque leader
58) "To a ..." poem
59) Dundee denial



- Local Agents
- Local Office
- Best Results

Call for your **FREE** Market Analysis on your cabin or lots



IDAHOS REAL ESTATE
Find the Best Cabins & Lots At www.IdahosRealEstate.net



Rod JONES

THE DIFFERENCE BETWEEN LISTED & **SOLD**

(208) 313-0000

Want yours sold? Call us!



"Idahos' *Jewell*"

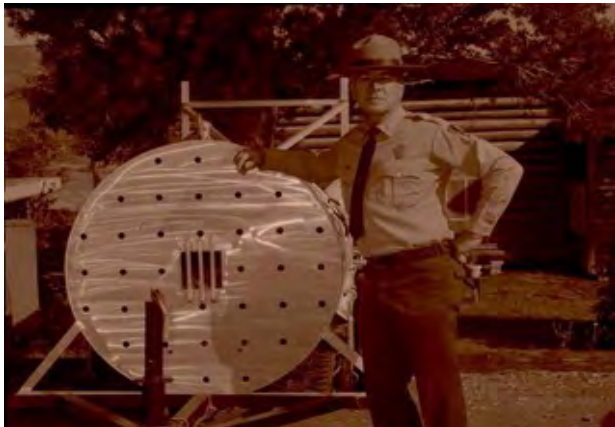
(208) 241-7769

EVERYTHING we touch turns to **SOLD!!**

Bear Relocation in the Yellowstone

By Lori Nuss

In 1968 my dad, Ranger Dale Nuss along with a park welder began work on the design and making of bear traps used in Yellowstone. The intention was to make the trap safe for bears but also safe for the park personnel that had the job of releasing the bear. The goal was to relocate the bear back to Yellowstone's backcountry. Sometimes that was by vehicle, or by helicopter.



Lori Nuss
The REAL Yellowstone©
406-581-0851
lorinuss@me.com
www.therealyellowstone.com

Island Park's Newest Little Souvenir Shop With The Biggest Heart

Ready to take home your unique souvenir or gift from your visit to Island Park? The brand new Island Park Souvenir and Gift Shop is open! Located at 3519 Yale-Kilgore Road, our littlest shop with the biggest heart offers a wide range of specialty and on-of-a-kind items to commemorate the memories you make in our beautiful area.

Whether it's a t-shirt, hat, postcard, or trinket, we have something for everyone. Friendly staff will be on hand to help you find the perfect gift or keepsake to bring home.

Why wait? Come see us online only for now, at www.IslandParkSouvenirs.com, and take home your piece of Island Park. Can't wait to see you!



Here's an additional photo with a diagram of the design and how the trap worked. This design is still in use today in Yellowstone and other national parks.

Let's not forget, it is once again bear season in the Caldera. Keep your bird seed, dog food, and other attractants put away and keep you garbage in bear proof cans. Carry bear spray while you hike, hike in groups, and make noise while your out, surprising a bear can be deadly, for both you or the bear! And be careful with your pets! Stay safe.

SAFE RELEASE OF BEARS

Usual procedure requires two men to transport a grizzly for release in a different area, and there is always the danger of the bear turning on the person who releases him. Ranger Dale H. Nuss, Yellowstone National Park, suggests an automatic release for the trap.

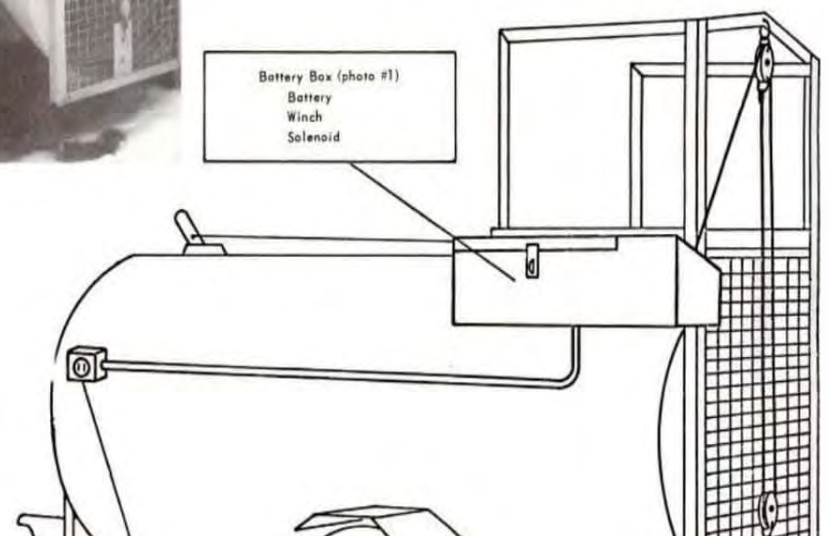
Install an electric winch on the trap. Use an electric wire extension cord, with a plug on one end and a switch on the other, to be attached to the proper connection when the release is to be made. The switch end of the cord is placed inside the towing vehicle so that the release



may be made from there. The towing vehicle may be parked or moving during the release which can now be accomplished by one person from the safety of the interior.

When the winch is not in use, as during trapping operations, the lower pulley on the trap lid can be easily removed, the cable can be wound on the winch drum, and all parts thus removed from trapping and transporting operations.

The automatic release has been in use successfully at Lake Ranger Station since 1969. The cost was about \$60 for the starter motor, a 12-volt battery, solenoid and cables, and labor.





McCLOUD SERVICES

Excavation - Plumbing - Utilities
Gravel - Roadbase

208-223-2382
flintmccloudconstruction@gmail.com

Easter Egg Hunt a Resounding Success!

In what proved to be a whirlwind of excitement and laughter, the Mountain Life Charitable Foundation hosted its inaugural Easter Egg Hunt on Saturday, March 30th. The event, held at the Island Park Village Golf Course, drew in an enthusiastic crowd, eager to partake in the festive tradition.

The highlight of the day was undoubtedly the lightning-fast egg hunt, during which a staggering 2000 eggs were snatched up in less than a minute. The sheer speed and energy of the participants added an electrifying buzz to the atmosphere, with children darting to and fro in search of colorful treasures.

Adding to the excitement were the golden tickets hidden among the eggs, offering lucky winners the chance to claim special prizes. Additionally, a raffle featuring enticing rewards kept the anticipation levels high throughout the event.

To the delight of all attendees, the Easter Bunny himself made a special appearance, hopping around to greet children and spread cheer. The furry visitor added an extra dose of magic to an already enchanting day, creating unforgettable memories for all who were present.

The Mountain Life Charitable Foundation wants to press their heartfelt gratitude to the numerous sponsors and dedicated volunteers whose support made the event possible. Their contributions, whether through financial assistance or hands-on help, ensured that the day was filled with joy and delight for all who attended.

Looking ahead, the Mountain Life Foundation has vowed to make next year's Easter Egg Hunt even more spectacular, promising bigger surprises and even greater fun. With the overwhelming success of this year's event and the promise of a visit from the Easter Bunny, anticipation is already building for what promises to be an egg-ceptional celebration in the coming year.



BEAR ENCOUNTERS: WHAT TO DO

Forget the nursery rhymes or color-based reactions -- YOUR reaction should be based on the BEHAVIOR of the bear, not the species.

BEAR BEHAVIORS
Constant pursuit
Very quiet
Head low
Seems focused on YOU and where you are

BEAR BEHAVIORS
Vocal and nervous
Popping jaws or lips
"Huffing" at you
Short bluff charge
Swats the ground

WHAT'S GOING ON
Bear is potentially seeking a food reward (food conditioned) or you (predatory). THIS IS A VERY DANGEROUS SITUATION!

YOUR BEST REACTION
Have bear spray ready! Let the bear know YOU are in CHARGE. Group up with others near you, act large, aggressively yell, try to get the bear to leave

WHAT'S GOING ON
You're in the bear's space and making the bear very nervous. It is trying to tell you to back up and go away!

YOUR BEST REACTION
Have bear spray ready! Let the bear know you are NOT a THREAT by slowly backing up. Get out of their space and go away. DO NOT TURN AND RUN.

BEAR SPRAY
A simple tool that may save your life! Learn how to use it and ALWAYS carry it in bear country!



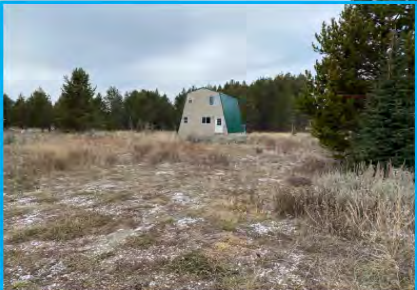
Christie Cameron

Year Round Local Realtor
208-351-0816
Christiecameron7@gmail.com
Associate Broker

4135 Sawtelle Peak Road,
Island Park, Idaho 83429



Aspen Ridge Rental
3120 sq ft, Mountain Views,
\$899,900



Last Chance/Douglas Dr
RV lot, build rental cabin,
No HOA, Sewer paid.
\$115,000



Red Rock Rd
47 acres - Borders Forest
Service - near Henry's Lk
\$1,250,000



Macks Inn
Water, power, sewer, well
house, bunkhouse, 3RV
hookups \$299,000



Last Chance Rental
5.46 acres - 4 bedroom
suites, 5 bath
\$1,350,000



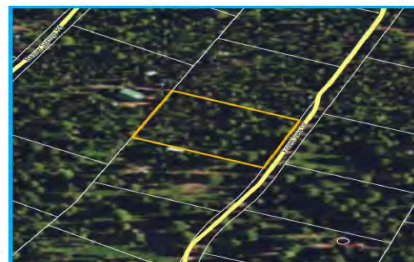
Ashton
.45 of an acre, shop and
single wide, corner lot
\$179,000



IP Village - STR
4 Bed, 3 bath - 2 Masters
3364 Sq Ft Great Location
Golf Course, .59 Acre
1176 garge
\$1,250,000



Yale Creek
1.75 Acres, Has septic and
power, no covenants
\$199,900



Yale Creek Lot
.88 acre
Camper lot #38
\$130,000



LAKESIDE RENTALS

Island Park Reservoir



208-558-9770

SEA-DOO can-am ski-doo



TARGHEE TRAIL RIDERS

ISLAND PARK, IDAHO

This group is open to anyone that shares a love of this area and the trail systems. Email us at TargheeTrailRidersIslandPark@gmail.com to join. We have a Facebook group called Targhee Trail Riders Island Park Idaho where information regarding upcoming events and important announcements will be posted. *Please join today!*



FUGOWEE SNOWMOBILE CLUB

ISLAND PARK, IDAHO

Join one and all, feel free to join both clubs. Both are supportive of the trails and the sport, and both will help maintain and keep our trails open.

Call or email:
Kent Bateman
ksb1@blackfoot.net
208-715-1582

Equipment Rental Island Park

Lakeside Lodge

3857 Lakeside Lodge 208.558.9770



<u>UTV/ATV</u>	
Defender 6 seat	\$429
Commander 4 seat	\$399
<u>SeaDoo</u>	
Spark/Trixx	\$299
GTX PRO 130	\$359
Boats starting at \$495	
1 up Kayaks and Paddle Boards	\$ 50
2 up Kayaks	\$ 80
E-Bikes	\$ 85

** All prices are for full day 9 am to 5 pm
***Price does not include fuel or damage deposit

Island Park Adventures

3342 N Hwy 20 208.558.7581

<u>UTV/ATV</u>	
Defender Max Limited	\$599
Defender Max	\$477
Commander Max	\$457
Maverick Trail	\$357
Outlander Max	\$306
Outlander	\$266

***Helmets are included with rentals

<u>Sea Doo</u>	
Sea Doo Spark 3-UP	\$300
Sea Doo GTX 3-UP	\$400

***Lifejackets are included with rentals

***ALL rental pricing includes insurance

Will soon relocate to 4150 N Big Springs Loop

High Mountain Adventures

4141 Sawtelle Peak Rd 208.558.9572
Tuesday to Saturday 9 am to 3 pm

RZR Trail 900 50"	\$299
RZR XP1000 2 Seat	\$329
RZR XP1000 4 Seats	\$399
RZR Xpedition 5	\$529
RZR Pro 4 Seat	\$499
Kayak	\$ 39
Triple Kayak	\$ 60
Raft	\$99/\$150
Paddle Board	\$ 49
Float Tube	\$ 25

Discounts for multi day rentals and multiple machine rentals

Recreation Maps



Scan to download the Avenza Map App. Create an account, it's free. Find the Island Park Motorized Recreation Map, both North and South for all of the Island Park area. The also have aCaribou-Targhee National Forest Ashton-Island Park Ranger Districts Winter Recreation for a small fee. Find your trails and enjoy yourself. Please, don't forget, cell coverage here is difficult in most areas, don't count on it for your navigation. Use a paper map, or download your map to be sure you can use it.

Mountain Life Charity: Striving for Growth

Continued from Page 1

The Plan

This endeavor involves continued fundraising and securing a property. We are eagerly seeking like-minded individuals who share our passion to contribute by participating in events and fundraisers. In addition to our charitable fund, we are seeking sponsors keen on championing our vision whether through seller financing or assisting us in acquiring the property. After a property is secured, we will continue to grow funding to build the play structure and disc golf course. At this point, our dream of a park would be a reality!

The Future

Once we have a park established, we will continue with our fundraising activities to grow capital to add more amenities. We will start with a pavilion to include tables and in-ground BBQs for people to picnic and enjoy the area with friends and family. The second phase will be adding permanent restroom facilities, with plans to later remodel and incorporate this into a larger clubhouse that would provide an indoor space for a year-round gathering place. It will take some time, but our members have the drive, determination and a commitment to see this space through to completion.

The Devotion

You will never find “idle hands” from the members of our charity. We no more than get done with a major fundraiser before we are planning the next one. We have several fun events planned for this year. The **Corn Hole Tournament** was on April 20 th at the IP Village Golf Course Clubhouse the event proceeds are going to our very own hero, Patrick Shaw. At time of publishing, we didn’t have firm numbers so stay tuned to our Mountain Life Charitable Foundation Facebook page to get the results from this marvelous event. We are also super excited about our **Golden Ticket Raffle!** What is the Golden Ticket? It is your opportunity to purchase raffle tickets for a chance to win 1 of 4 exclusive vacations. These tickets will be \$100 with only 100 tickets sold. **Sawtelle Music Festival;** this is a new event that we are collaborating with Dan Simms of the Meadowlark Music Fest and Island Park Souvenirs to bring the music to Island Park. The event will be held at Sawtelle Mountain Resort Pavilion on Thursday, August 22 nd , Friday, August 23rd and Saturday August 24th. We can’t wait to see this event grow. Check out the Sawtelle Music Festival Facebook Page with the list of Musicians. We are already planning our second annual **Festival of Trees;** the event is scheduled for Friday, November

29 th and Saturday, November 30 th . We are anticipating that this will be a MAJOR event considering the excitement level of our participants already growing! We are working on other “pop up” events.

We are proud to announce our other sensational news; we applied for and were granted our **Charitable Gaming License** on March 18, 2024. This license opens up doors for our charity to grow exponentially. Stay tuned to our Facebook page: Mountain Life Charitable Foundation or our website: <https://mountainlifecharity.org/> for upcoming events. We would like to thank Sawtelle Mountain Resort for the facilities for this year’s event.

We realize that the further our project progresses the more our financial needs will grow. Part of our members’ commitment is growing the Foundation into the kind of organization that can sustain this project in its’ entirety. We are Island Parkers. We love this place that we call home (or our home away from home) and we are dedicated to supporting our vision now and in the future. We share this aspiration with you, our fellow community members, so that you are aware how we intend to utilize the funds we raise and how you can help us bring the community together.




Integrated Wellness, LLC
208-549-9970

Melissa Child
PhD, MSW, LMSW

Mental Health Services
in Island Park or via Telehealth

IP Optics LLC
est. 2023

TROY ERICSON
Call/Text
208.965.1477

IPOpticsLLC@gmail.com

REAL ESTATE/SHORT TERM RENTALS

**3D Tours &
Photography**



*Festival of
Trees*

November 29th & 30th

Sawtelle Mountain Resort

Presented By:
Mountain Life Charitable
Foundation
www.MountainLifeCharity.org





Christi Spinner










kw KELLER WILLIAMS REALTY EAST IDAHO

208-604-2153

Serving Island Park & All of South East Idaho



 <p>3795 Taylor Mountain Luxury living with rustic charm new build in Centennial Shores. Gated waterfront community, fully furnished & turn key. This cabin boasts 360 Lake & Mountain views, 5 beds, 5.5 baths (2 masters), fully landscaped yard front& back, granite throughout, custom cabinetry heated bath floors, forced air heat & AC, huge shop w/full apartment above. Very short walk to one of 3 private Island Park Reservoir accesses. Year around access. MLS#2158106 \$1,950,000</p>	 <p>5085 Trumpeter Stunning cabin in a secluded and quiet lake front subdivision on Henry's Lake. Very successful Vacation rental, fully furnished & sold "Turnkey". Take in the most beautiful lake, mountain, & sunset views, perched on a manicured corner lot, beautifully landscaped, firepit area, room for RV & huge deck wrapping the home. Large open kitchen, dining and living room for gathering & entertaining, attached heated garage for all the toys. World renowned fishing. MLS#2157924 \$1,365,000</p>	 <p>3760 Cove Ct Beautiful WATERFRONT LOT in gated Centennial Shores Subdivision Outstanding Centennial Mountain, Island Park Reservoir, and unobstructed sunrise and sunset views. Allows for Vacation Rentals & Guest House in Addition to Main House. One of the last remaining! MLS#2153167 \$799,000</p>
 <p>Shadow Ridge Subdivision In Ashton, Gated Community, creek front lot, no short term rental allowed, Walking distance to World Class Fly Fishing, Year Around Access. Borders Public Land. 4376 Granite Ridge, 5.5 acres MLS#2162869 \$355,000</p>	 <p>4179 Grandview Rd Village Golf Fully and amazing vacation rental, Views, 4 bedrooms, 2- car garage, 2464 Sqft, built in 2005 MLS#2163021 \$699,000</p> <p>PENDING</p>	 <p>Shadow Ridge Subdivision In Ashton. Gated community, creek fronts lot. No Short Term Rentals Allowed, Walking distance to World Class Fly Fishing, Year Around Access. Borders Public Land. 1670 Shadow Loop South 1.7 Acres MLS#2163861 \$249,000</p>

ISAAC WALKER
OWNER

CALL OR TEXT FOR A QUOTE

208.243.0049

CLEARDIAMONDWINDOWS21@GMAIL.COM



CLEAR DIAMOND
WINDOW CLEANING



14 YARD DUMP BEDS
Available for all your construction material needs whether you need product hauled to you or you need construction waste hauled away.
Give us a call today!
208-569-4763 or 208-351-7058



DEFENDERS DIVERSIFIED
A VETERAN OWNED COMPANY

Veteran Owned and Operated
Konrad Monk 208-201-8883
Owner Contract # RCE-60873

Services
-Basic and Complex Septic Systems
-Excavation
-Site/concrete prep
-Utility Services
-Demo and much more

Defendersdiversifiedllc@gmail.com
Defenders Diversified LLC

Electric

208-351-7058
Electrical Contractor
Serving all of Southeast Idaho



Island Park Builders Supply
558-7552



ISLAND PARK ELECTRIC

4108 S Big Springs Road
Macks Inn, Idaho 83433

4376

News In Brief

BLUESTONE



Reduced

\$625,000




Call Jackie:
208-390-8303
Outback Realty

• 1 Bathroom

• 4 bedrooms

• Garage

• 1248 sq ft



DAD'S CONSTRUCTION
AND SERVICES
208-932-3152 OR 208-380-4967

• Trash Service

Weekly pick up

Bear proof containers

• Dumpster rental

7 x 14 x 4 Bins

\$200/wk + \$100/delivery + dump fee

• Equipment rental

Forklift

\$210/day

*call for discounted long term pricing

Upper Snake River Region Fishing Info

To fish in Idaho any person 14 years of age or older must have a valid fishing license.

*Idaho resident Anglers younger than 14 do not need a license and have their own limit.

*Nonresident angler under 14 must be with someone who has a valid fishing license and their fish are included in the license holders unless they purchase their own separate license.

Special fishing permits are needed for some activities for both residents and nonresidents:

- *Fishing for salmon and steelhead
- *Fishing with two poles.

Purchase your license at one of the following:

- *Online at idfg.idaho.gov/buy
- *Or the following local locations:
 - Elk Creek Station (Near intersection of Hwy 20 & Yale-Kilgore Rd)
 - Sam Patch Grocery (Near intersection of Hwy 20 and Sawtelle Rd)
 - Lakeside Lodge (On the reservoir at the end of Buttermilk Rd)

For a full list of regulations, open waters, and limits, visit:

TheCalderaTimes.com/upper-snake-fishing-regs

Caldera Restaurant	
Days and Hours	
<u>Anglers Lodge & Riverfront Restaurant</u> 3363 Old Hwy 191 208.558.9555 Check Facebook for days and times open	
<u>The Grill @ The Blue Buffalo Resort</u> 3402 N Hwy 20 208.220.7896 Monday - Saturday 11 am - 7 pm	
<u>Cafe Sabor</u> 4298 Hwy US-20 208.558.9300 Wednesday - Saturday 11 am - 9 pm Sunday 12 pm - 8 pm Closed Monday and Tuesday	
<u>Connie's Restaraunt</u> 4130 Quakie Lane 208.558.6987 Watch Facebook and website for spring reopen	
<u>Happy Anglers Cafe</u> 3340 Hwy 20 208.497.9455 Watch Facebook for spring reopen Call or message for baked goods	
<u>Lakeside Lodge</u> 3857 Lakeside Lodge Lane 208.558.9770 Daily Lunch 11 am - 5 pm Dinner 5 pm - 9 pm Bar 10 am - Close	
<u>Meadow Creek Lodge</u> Meadow Creek Road 208.351.2787 Watch Facebook for reopen	
<u>The Parlor at Mack's Inn</u> 4169 N Hwy 20 208.558.2450 Tuesday - Saturday 11 am - 9 pm	
<u>Pond's Lodge</u> 3757 Hwy 20 208.558.7221 Sunday - Thursday 11 am - 9 pm Friday and Saturday 11 am - 10 pm	
<u>Springhill Suites Island Park</u> 4292 N Highway 20 208.558.2400 Thursday - Monday 4 pm - 10 pm Closed Tuesday and Wednesday	
<u>Subway</u> 4141 Sawtelle Peak Rd 208.558.9884 Closed for the season	
<u>Phillips Lodge- The Lodgepole Grill</u> 3907 Phillips Loop 208.558.9379 8 am -8 pm Closed on Wednesdays	
<u>Trouthunter-Last Chance Bar & Grill</u> 3327 Hwy 20 208.558.8006 Watch Facebook for spring reopen	

Fremont County Commissioner Race

Continued from Page 1



Blair Dance



David Bloxham

2. Do you advocate for a K-12 school here in Island Park?

The question of a K-12 school in Island Park is for the patrons and School District 215 to discuss and decide the feasibility of the idea. As a county our responsibility is to administer the 25 separate taxing districts and distribute, according to law, the funds generated from those taxing districts. The Island Park Charter School is an excellent interim step to help eliminate the long bus ride for those young children. The educational product being delivered by Connie Day and her staff is excellent and second to none. It was exciting to see the school expand the number of grades available this last year. As to the bus ride for the other students, I am well aware of the length of time of the ride and the challenging weather conditions that can be encountered as my wife was a substitute bus driver and drove the Island Park school bus route many times.

I am a strong supporter of education. We have an outstanding Charter School in Island Park and I look forward to meeting the new Fremont School District Superintendent who will take office this summer. I believe a good working relationship with School District leadership will help bring a K-12 school back to Island Park when enrollment figures show a school is needed.

3. What are your ideas for keeping our tax dollars on the hill for utilization here?

All counties in the State of Idaho are strictly governed by law as to the collection and distribution of tax dollars. As mentioned above, there are 25 separate taxing districts in Fremont County each with its own tax levy rate. The funds generated from that individual levy is the responsibility of the taxing entity and is governed by their own taxing board as to distribution. If there are questions as to the distribution of those tax dollars it would be best to contact the board of the applicable taxing district to get answers. It would also serve well those concerned to research the dollars spent in the Island Park area by Law Enforcement, Road and Bridge, EMS, Parks and Recreation, Snowmobile Trail Grooming, Building Inspection, Planning and Zoning, Assessor, Solid Waste Transfer Station, etc.

If elected, I will represent all of Fremont County, so I will be looking at ways for the county budget to be frugal. As a full-time resident of Island Park, I am aware of the needs in Island Park and know some of our needs have been ignored. I plan to carefully examine department manager budget proposals and see if island Park issue areas can also receive funding and attention.

4. What is your stance on the Auditorium District?

The auditorium district is a matter for the citizens of the Island Park voting precinct to decide through normal democratic processes where the required majority must be met. The counties responsibility is to provide the voting opportunity.

The Auditorium District proposal was an Island Park community effort. The county was not involved in the effort. Had the district been approved, the district would solely work with the Idaho Tax Commission. This is not a county issue.

5. What are your ideas about the city limits in Island Park?

The discussion regarding the City of Island Park's community border is, again, up to the voters on an overall basis and up to the City of Island Park on a limited basis through the annexation process.

I have a good working relationship with the new Island Park mayor and city council. I believe we can work together on any city/county issues. I hope to get to know the mayors of other Fremont County communities. The county commissioners can not tell cities what to do, but I believe we can work together on issues.

6. What are your ideas for promoting further business in our area, including tourism and infrastructure? (RV dump stations, bathrooms, days and hours at the dump)

As to promoting further business in the Island Park area, the State of Idaho through the Department of Tourism does an excellent job in promoting the various regions in the state. Obviously, since Idaho is one of the fastest growing states. Business follows population. When the population increases business is drawn to an area. This is no less true in Island Park. The phrase that can be heard in most settings, "Idaho has been discovered"

It has been recommended to ITD by several different entities to include in the overall highway 20 plan a rest area that would include an RV dump site. One of the preferred locations suggested was at the Red Rock road/Hwy20 intersection. There is a sewer lift station in that location and the State of Idaho has been requested to place the Henry's Lake State Park on the municipal waste water collection system. The access by the State Park to the system would be at that same location.

The Island Park Solid Waste Transfer Station already has more open hours than the surrounding counties who have a much larger population base to serve. The county continually struggles to keep the transfer station staffed in todays employment environment. They do the best they can with limited resources to provide as much open times as possible.

I plan to work with state and federal officials any way I can to see what can be done to replace the abandoned dump station and bathrooms near Macks Inn. I know landfill hours and costs are an issue in Fremont County and I know county employees are looking at options to keep costs down while the county looks at the planned opening of a regional landfill in Madison County.

7. What are your ideas on the bear issue, regulations? Grants? Enforcement?

The bear resistant container (BRC) issue starts with public education. There are grants that have been offered by different entities to assist with that step. A group is forming to accommodate the receipt of the grant and its implementation to address the education piece. They are also discussing additional challenges such as identifying the geographical area that is to be included in the regulation, is compliance to be regulated/enforced, who is to enforce the regulation, are there to be penalties for non-compliance, what are the penalties? Is there broad public support for BRC or is it just a few concerned citizens? Should the BRC idea be put to an advisory vote? Should the vote be throughout the county or just the Island Park voting precinct or to a proposed geographical identified area? There are many other details that must be addressed prior to any attempt at implementation.

A group of community volunteers have been working with the Fremont County sheriff's office, Idaho Fish and Game and various organizations to secure grants to raise awareness that Island Park is Bear country. They are working with Fish and Game to determine if other areas in Fremont County should also raise awareness of bears in the area. I support their efforts and the efforts of the Sheriff's office to help make Fremont County safe for property owners, visitors and wildlife.

Peak Fly Hatch May



Blue Winged Olive (Baetis several species)



Characteristics: Two tails. Light to medium olive/gray body with light to medium gray wings.

Timing of Hatches: Mid-March through early May during afternoon hours and in the mid-summer around dusk & September through October during afternoon hours.

Habitat: Widespread on most sections of the Henry's Fork, Madison, Firehole, South Fork of the Snake, and other local rivers and tributaries.

Comments: Many species are multi-brood, meaning a species may produce two or more broods during the calendar year. They are classified as swimmer nymphs. The most important species emerge in the spring and again in the fall. These mayflies produce exceptional dry fly fishing during these periods. Egg laying spinners often crawl under the water to oviposit their eggs.

Patterns: Pheasant Tail Nymph, Halfback Emerger, CDC Emerger, Paracripple, BWO Soft Hackle, BWO Nohackle, Sparkle Dun, Thorax, and Parachute Adams

Hook Sizes: 18, 20 & 22

Suggested Flies

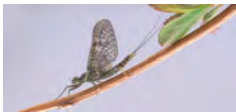


Cocktail Nymph



Harrops Last Chance Cripple

Western March Brown (Rhithrogena morrisoni)



Characteristics: Two tails. Dark gray wings with strong dark mottling. Body is dark olive brown to purplish black.

Timing of Hatches: Late spring from mid-April through early June. Duns emerge during mid-morning hours. Spinners fall in the evenings.

Habitat: Medium to fast water with gravel or rocky bottom. Very common on most sections of the Henry's Fork. Late season species are also common on the Madison, Gallatin, and some waters in Yellowstone Park.

Comments: March Browns provide exceptional dry fly fishing on the Henry's Fork in May and early June. They are classified as clinger nymphs. Transformation from the nymph to the dun usually takes place under the water. Therefore, a soft hackle emerger fished deep can often bring good results. During cooler weather the duns will stay on the surface long enough to provide good dry fly action.

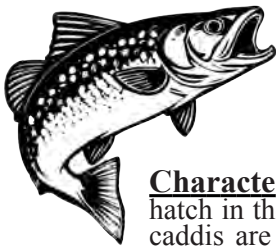
Patterns: Pheasant Tail Nymph, Pheasant Tail Soft Hackle, March Brown Emerger, Quill Gordon, Slate Olive Thorax, Slate Olive Nohackle

Hook Sizes: 12, 14 & 16

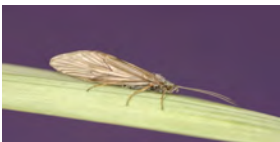
Suggested Fly



Lawson's Mayfly Cripple



Grannom Caddis (Brachycentrus)



Characteristics: Sometimes known as the "Mother's Day Caddis" the common Grannom is a very important hatch in the pre-runoff period in April and May on the Henry's Fork, South Fork, and other local wateres. These caddis are second only to the Spotted Sedge in importance for fly-fishers. The case making larvae are a very important food source for wintering trout. Another species produces very good fishing on the Henry's Fork, Madison, Yellowstone and other waters during late summer.

Timing of Hatches: April and May and August through early September. Emergence occurs in the afternoon and early evening. Egg laying frequently coincides with the emergence.

Habitat: All water types. Larvae build square cases. They thrive on gravel, rocks and aquatic vegetation.

Comments: Pupae can drift long distances while struggling to escape the pupal shuck. Males are one size smaller than females. The emergence often produces explosive rises from trout that are hungry after a long winter. Best technique is to use a pupa as a dropper from a dry fly.

Patterns: Olive Cased Caddis, Olive or Dark Gray Emergent Sparkle Pupa, Olive Partridge Pupa, Olive Spent Partridge Caddis, Olive X-Caddis, Olive E-Z Caddis, Hemingway Caddis

Hook Sizes: 14, 16 & 18

Suggested Flies



Lawson's Hemingway Caddis

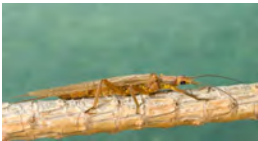


Lawson's Partridge Caddis Emerger



X-Caddis

Golden Stonefly (Acroneuria, classenia)



Characteristics: These large stoneflies are similar in appearance to their larger Salmonfly cousins except they are a couple of hook sizes smaller and they are lighter in color. They are a dark golden amber with a lighter underbelly. The most common species emerge along with or just after the Salmonflies. Their emergence usually covers a longer period. Another species emerges on the South Fork of the Snake in late summer and early autumn.

Timing of Hatches:
Henry's Fork - May 25 through June 30
Madison River - June 25 through July 20
South Fork - June 25 through July 20 & August 15 through September 15

Habitat: Medium to fast, oxygen rich water with rocks and boulders

Comments: Nymphs often emerge at night or during the early morning hours. Adults don't always have wings. Many males and some females of the late season species are entirely wingless or they have very small wings rendering them impossible to fly. These species complete their mating ritual on the bank and scurry across the water to lay eggs. Late in the summer trout lay in wait to target these large morsels as they scamper across the water.

Patterns: Tan Rubberlegs, Golden Stone Nymph, Henry's Fork Golden Stone, Madam-X, Golden Stone Hedge Hog, Elden's Ant

Hook Sizes: 8, 10 & 12



Salmonfly (Pteronarcys)



Characteristics: These are huge insects. The adults are dark charcoal with dark orange thoraxes and underbellies. The nymphs vary from dark mahogany brown to black. They take 3 to 4 years to mature from egg to adult. The nymphs concentrate near the bank and crawl out to emerge. Emergence is specifically concentrated and usually moves upriver a mile or so a day. The egg-laying adults fly clumsily over the water and many of them end up on the water providing explosive dry fly fishing.

Timing of Hatches:
Henry's Fork - May 20 through June 10
Madison River - June 20 through July 5
South Fork - June 20 through July 5

Habitat: Medium to fast, oxygen rich water with rocks and boulders

Comments: Nymphs provide norishment to trout on a year-round basis. There are usually 2 or 3 age classes of nymphs in the water at the same time. Trout can get totally goured on the nymphs just prior to emergence. Trout can quickly get their fill of adults. The best tactic is to try to work the water upstream from the main emergence with nymphs. The best dry fly fishing normally occurs after the peak of the emergence is over so that trout are more focused on adults.

Patterns: Black or Brown Rubberlegs Nymph, Henry's Fork Salmonfly, Rouge Salmonfly, South Fork Secret, Foam Salmonfly

Hook Sizes: 4 & 6

Getting Ready for Spring!



We're working to help build a better Island Park! Keep up with us on Facebook or our website.

MountainLifeCharity.org



IpIdaho.com



Kristen Andelin
Kristen@IpIdaho.com
(208) 360-8850



Tina Crow
Tina@IpIdaho.com
(208) 573-8304



Troy Ericson
Troy@IpIdaho.com
(208) 965-1477



ICE HOUSE CREEK

2825 Morning Dew Dr
MLS # 2162050
\$1,445,000



Last Chance

3422 Oakwood Dr
MLS # 2163945
\$675,000



Henry's Lake Community

3918 Lake Breeze Drive
MLS # 2163740
\$627,999



NEW SUBDIVISION

4930 Alpenglory Way
MLS # 2152906
\$372,000



COMMERCIAL 6.9 Acres

3783 Blue Heron Ln
MLS # 2155644, 2155638
\$650,000, \$399,000



Lot with Shop

3778 Basalt Ln
MLS # 2164543
\$150,000



Last Chance

3769 Lava Ln
MLS # 2163915
\$645,000



Sawtelle Estates

4010 Coyote Road
MLS # 2163793
\$520,000

Looking to buy or sell?

Contact The Mountain Life Team

GoTeam@IpIdaho.com

(208) 534-6775



Shawna Fuller
Shawna@IpIdaho.com
(208) 731-3688



Patty Laritz-Bithell
Patty@IpIdaho.com
(208) 846-4846



Lynette Tingey
Lynette@IpIdaho.com
(208) 851-8474

First Street PLUMBING & HEATING

Voted Best of Best
2020-21-22



www.FirstStreetPlumbingCenter.com

Service • Repair • Installation • Parts • Plumbing
Heating • Water/Sewer Line • Water Heaters
Softeners • Sewage

208-522-6896

345 1st St • Idaho Falls • Since 1942



**EAST SUMMIT
EXCAVATING**
SERVING EAST IDAHO
EXCAVATING, GRADING, SEPTIC
Call or Text for a Free Quote
(208) 569-6017



208-569-4763
Let Solar Scrub keep your solar panels
clean & producing optimal power
generation all year long.
We also do exterior cleaning of
businesses and homes.
Serving all of Southeast Idaho
Call us for a Free Quote



ASAP SEPTIC PUMPING

208-390-7559

Full time Septic Pumping In Island Park
Tank Locating, Digging and Inspection
for STR and Real Estate Sales Inspection

24 Hour Emergency Services

LOOK FOR THE BIG RED TRUCK

Asapumping.com



I SAW THAT
CUSTOM CHAINSAW
CARVING
TREE REMOVAL
MISC. CABIN REPAIR
AL PARKS
CALL/TEXT FOR FREE ESTIMATE
208-200-9404

Snowmobile Racing: Island Parks Good Old Days!

By Tom Bithell

Snowmobile Racing in Island Park has a storied history. From the origins in the early 70s until 2013 there were yearly snowmobile races around Island Park and West Yellowstone. These weren't the closed course snowcross races of today. These were the old fashioned cross-country races that covered up to 100 miles through the forest on trails or open land.

Snowmobile racing got its start in the 1960s soon after Polaris and Ski Doo started producing snowmobiles for the consumer market in the late 1950s. Within a few years the market was booming and racing followed. The first documented snowmobile race took place in Quebec, Canada in 1962.

Racing quickly spread across Canada and the United States and cross-country racing was the favorite in the early days. The first International 500 Snowmobile Race from Winnipeg, Canada to St. Paul, Minnesota was held in 1966. These races quickly got manufacturers attention when they realized winning races sold snowmobiles.

Organized racing came to Island Park in the early 1970s. I missed seeing or participating in these races but I've heard many stories from local friends about the good old days of racing in Island Park.

The first legendary race I was told of was the St. Anthony 101. This race went from St. Anthony to West Yellowstone, or vice-versa, depending on the year and it was just over 100 miles long. Many racing greats such as Kirk Hibbard raced in the 101 over its time.

The St. Anthony 101 started in 1972, according to Willie Medley's recollection. Willie was an avid off-road motorcycle racer out of Pocatello and got into snowmobile racing in the early 70s. His first St. Anthony 101 was in 1973 on a Rupp 440 with Nitro. They raced in four man teams and Willie's team got third that day.

Willie told me about riding from St. Anthony around the backside of Island Park Reservoir and through Shotgun Valley back before they plowed the roads out there in winter. There was also no trail grooming back then in either Idaho or Montana, so racers busted trails or followed broken tracks.



This was riding much different snowmobiles than today. They were short tracked with short track cleats, and not built for standing up like today's sleds. But these guys got it done and there's still some of them around to tell the tales.

In the 1970s there were also yearly Associated General Contractors races in the area. The AGC races were put on by the union and were quite popular in the day, often racing out of West Yellowstone from the old airport.

One year, Willie told me, it was 40-below zero at start time. They ended up pushing the start back a couple of hours because people couldn't start their diesel trucks that morning to get to the race. So by start time it had warmed up to 20-below zero, and Willie and his brother Kenny's team went on to take first place in the frigid cold.

Joe Williams and Kim Abend also shared some of their memories of Island Park racing with me.

Joe Williams has been around Island Park for a long time and has been involved with all the snowmobile activities over the years. In 1985 he and Randy Gravatt broke the Guinness Book of World Records for the most miles rode on a snowmobile in 24 hours. They rode in a blizzard and were hard pressed to break the record but they did it. Then the next year, in much better conditions, they broke their own record.

Kim Abend started snowmobiling in Island Park in the 80s and raced the local races until their end. He didn't ever race in the St. Anthony 101, which ended in the 90s. The one year he was planning to, he crashed during a pre-run and was too injured to race. If you know Kim, that's his luck, but he did get a few trophies

in the Island Park races that were really popular from the 90s to 2014 when they ended for good.

In those years they had three local races a year: the Ol Ladies Race, the Co-Ed Race, and the Old Man's Race. These races were made up of three, and later two, person teams. There were two divisions - the No Fear division and the Wild Bunch division.

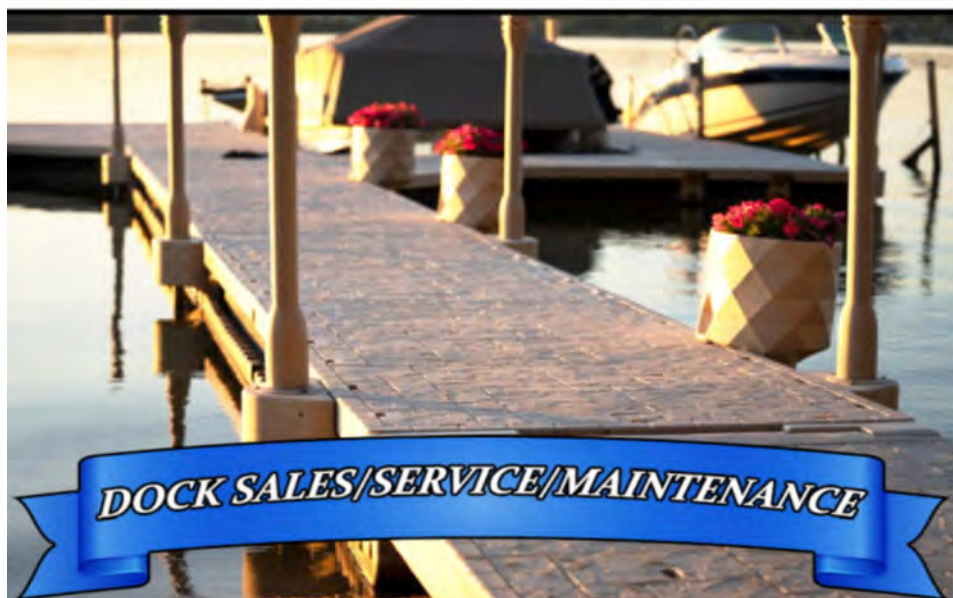
The Ol Ladies Race started at the old A Bar, the Co-Ed Race started at Pond's Lodge, and the Old Man's Race started in the field north of Sawtelle Lodge. The races took place mainly on the trails and would consist of a couple of twenty-some mile loops. It took a lot of volunteers and Forest Service permits, but Bill Smith and Dennis Kennedy did a great job putting them on by all accounts.

The races were popular yearly events until their end in 2014 when a bad accident in the Ol Ladies Race resulted in a broken back for one of the women. After that, the rest of the races for the year were canceled and due to insurance and liability concerns they never resumed. Cross-country racing in Island Park, like almost everywhere, was finished.



Can cross-country snowmobile racing ever make a return to Island Park? I've heard whispers that there's interest and possibilities. Only time will tell, but it would be great to have a return of those fun days.

Caldera Custom Docks
ISLAND PARK, IDAHO



208-313-2858
Calderacustomdocks.com
FEATURING Wave Armor PRODUCTS



OutBack Realty

Call Us Today!



Your Premier Office

(208) 558-9500



Jamie Phillips
208 221 2647
Broker



Jackie Jensen
208 390 8303
Realtor



Riley Hoyle
208 351 6705
Realtor



Monika Boyce
208 240 2717
Realtor



Christie Cameron
208 351 0816
Assoc Broker



Gay Johnson
208 351 5204
Realtor



Gary Dawson
208 351 3054
Realtor

www.outbackrealty.com ~ www.islandparkrealestate.com

Thinking about buying or selling?
Let OutBack Realty represent You!

WE ARE A GROUP OF
FULL-TIME ~ LOCAL ~ YEAR ROUND
AGENTS!



Premier Office

Events this Month

Give Big Fest West Yellowstone

THURSDAY, MAY 2, 2024 AT 5 PM – 7 PM

Give Big Fest West Yellowstone

Yellowstone Beer Co.

May 3rd: Meet your candidates for County offices

Will be held at the EMS building in Island Park, check for updates on times, considering 5 to 7 pm or 6 to 8 pm.

BIG HORN BAR

RESTAURANT AND CASINO

406-589-8513

14355 HEBGEN LAKE RD WEST YELLOWSTONE, MT 59758

SUNDAY, MAY 5, 2024 AT 6 PM – 7 PM

Sunday Night Poker

14355 Hebgen Lake Road, West Yellowstone, MT

May 21st: Election Day

Island Park registered voters cast their ballots at the EMS building

Geyser Whitewater Expeditions

Swift Water Rescue Course

Required for GWE Guides but open to the public

\$225 contact 406.995.4989 to register

Pancake Feed!

SATURDAY, MAY 25, 2024 AT 7 AM – 10 AM

4378 County Circle, Island Park, ID 83429

Hooligans takeover Saint Anthony!

Saint Anthony carol runners

MAY 30 AT 9 AM – JUN 4 AT 8 AM PDT

WEST YELLOWSTONE PUBLIC LIBRARY:

Library Hours:

Tuesdays, Thursdays, and Fridays 10:00 AM - 6:00 PM

Wednesdays 10:00 AM - 8:00 PM

Saturdays 10:00 AM - 2:00 PM

Closed Sundays and Mondays

Free Spanish-to-English Classes:

Beginner Level: Mondays and Fridays at 5:00 PM

Intermediate Level: Mondays and Fridays at 6:00 PM

Lego Club: Tuesdays at 3:15 PM

Pre-K Storytime: Wednesdays at 11:00 AM

Chess Club: Fridays at 4:00 PM

West Yellowstone Public Library
23 Dunraven Street
West Yellowstone, MT 59758
(406) 646-9017
<https://westyellowstonepubliclibrary.org/>

ISLAND PARK LIBRARY ACTIVITIES

CHILDREN'S STORY HOUR Fridays at 11:00am

CRAFTY CORNER Thursdays at 3:30 pm

Bring your favorite craft i.e. knitting, crocheting, coloring, puzzles, etc. or just come and socialize.

YOGA Wednesdays at 3:00 pm

Please bring your mat.

HERBAL TEA PARTY 3rd Monday of the month at 1:00pm

Refreshments welcome.

COOKBOOK BOOK GROUP 1st Monday of each month at 1:00pm

Please call the Library at (208) 558-0991 for additional information.

Bring a dish made from a recipe in the monthly designated cookbook.

May 6th –Bring your own recipe from a church or community cookbook

Jun. 3rd –Ready or Not by Michelle Tam and Henry Fong

Jul. 1st –The I Heart Naptime by Jamielyn Nye

Aug. 5th –Bring your own recipe

Sep. 9th –Magnolia Table by Joanna Gaines

Oct. 7th –In Memory's Kitchen: A Legacy from the Women of Terezin

Nov. 4th –Bring your own recipeDec. 2nd –Betty's Favorites (Christmas Party)

SPECIAL CLASSES AND EVENTS

TECH MONDAYS May 13th 1:00pm to 3:00pm

With Adam Bennion

Bring your electronic devices (phones, tablets, laptops, etc.) with any question you may have

GARDENING CLASSES May 2nd 6:00pm – 7:00pm

Taught by Tom Jacobsen

WILLS May 1st 6:00pm – 7:00pm

Presented by Devin Burton

Questions on where to start and how to do one?

CRICUT BASICS May 9th 3:30pm – 4:30pm

Taught by Randa Dye

PHOTOGRAPHY CLASS May 15th 6:00pm – 7:00pm

By Adam Brubaker

Taking photos with your cell phone taught

QUILLING May 17th 1:00pm – 3:00pm

Rolling paper to create art Class for Teens

CREATING MINI GIFT BOXES W/ PAPER May 23rd 3:30pm – 4:30pm

WEEDS and How to Control Them May 29th 6:00pm – 7:00pm

Presented by Bryce Fowler

Noxious and Obnoxious weeds and ways to eliminate them

MEDICINAL PLANTS June 5th 6:00pm – 7:00pm

Taught by Alan Webb

WILDLIFE OF YELLOWSTONE June 19th 6:00pm – 7:00pm

Presented by Adam Brubaker

EVENTS IN ISLAND PARK

Island Park

- Saturdays
- May 23
- May 25
- June 15
- June 15
- June 15
- June 29, July 27
- July 4
- July 6
- July 20
- July 19 & 20
- July 20
- August 3
- August 5
- August 9 & 10
- August 22 - 24
- August 24
- August 30 & 31
- August 31
- September 7
- Memorial to Halloween
- Memorial to Labor Day
- October 18 & 19
- October 25
- October 26
- November 29 & 30

West Yellowstone

- Thursdays June to September
- July 4 & 20
- July 13
- August 2 to 11
- August 3, 10 & 24
- August 10
- September 5 - 7
- September 14

Museum Exhibits - Ashton

- Chamber Summer Kickoff
- Pancake Feed
- Henry's Fork Days XL
- Wellness Expo 2024
- Classic Car Show
- Yoga at the Pavilion
- Fireworks
- Sawtelle Fun Run
- Mesa Falls Marathon
- Island Park Festival
- Pioneer Days - Fireworks
- I ♥ IP - IP Chamber Event
- Daisy's Angels Fashion Show
- Swaptastic Swap Meet
- Sawtelle Music Festival
- Community Pancake Breakfast
- Island Park Festival
- Yoga by the River
- Wine in the Woods
- Music (Saturdays, some Fridays)
- Shotgun Sundays
- Haunts of Harriman
- Hallowfest
- Halloween Costume Party
- Island Park Festival of Trees

Museum of the Henry's Fork

- Yellowstone Playhouse
- Island Park EMS Building
- Last Chance Fisherman's Access
- Island Park EMS Building
- Lakeside Lodge
- Sawtelle Resort Pavilion
- Lakeside Lodge
- Sawtelle Peak Rd
- Mesa Falls Scenic Byway (start)
- Sawtelle Resort Pavilion
- Lakeside Lodge
- Sawtelle Resort Pavilion
- Hines Residence
- Island Park EMS Building
- Sawtelle Resort Pavilion
- Little Church in the Pines
- Sawtelle Resort Pavilion
- Cafe Sabor
- Harriman State Park
- Lakeside Lodge
- Shotgun Bar
- Harriman State Park
- Island Park Village Clubhouse
- Lakeside Lodge
- Sawtelle Resort

Museum Lawn

- Heritage Park
- West Yellowstone Rodeo
- West Entrance (YNP)
- Heritage Park
- Hi Country Tavern
- Heritage Park
- Union Pacific Dining Hall

West Yellowstone Market

- Music in the Park
- Wild Bill Days
- Mountain Man Rendezvous
- Music in the Park
- Horseshoes for Hero's
- Wretched Mess Arts Fest
- The Happening

For more information about these events, check out our website at:

IpIdaho.com/events

Mountain Life Realty

Centennial Excavation

Shiloh Owens Jami Owens
208-589-8313 208-589-6893

WedigIdaho@Hotmail.com

www.WeDigIslandPark.com

LIC # RCT-1774



Excavation • Road Building • Lot Clearing • Complex/Standard Septics
Utility Trenching and Installation • Demolition • Gravel

WE DIG IDAHO



Historic Phillips Lodge

208-558-0192



Get a great rate on Cabins!

Stay in a one, two, or three bedroom cabin
Every cabin includes private hot tub
Fireplace and WIFI TV



Open
Full Bar
Daily
8 am – 8 pm
Closed on Wednesday

Serving Breakfast, Brunch,
and Dinner
Homemade Soups Everyday
Prime Rib Everyday

208-558-9379 – Lodgepole Grill

Cabins@PinesIslandPark.com



April 2, 2024

NEWS RELEASE
For Immediate Release

Contact: Jasper Davis
(208) 652-3567

Celebrating 40 years of Stewardship through Science—Henry's Fork Foundation remembers its roots while looking ahead

ASHTON – "Who is the Henry's Fork Foundation?" you might ask. "What do they do and how does it affect me?" Chances are, if you have felt the thrill of reeling in a rainbow trout anywhere along the 127-mile-long Henry's Fork River, or if you've enjoyed a lazy, laugh-filled summer afternoon tubing with your family from Stone Bridge to Ashton Reservoir, if you received higher allocation of irrigation storage in recent drought years, or if you have simply gazed in awe at the majesty of Mesa Falls, you might be seeing the results of the Henry's Fork Foundation's work. We strive to be the *Voice of the River*.

The Henry's Fork Foundation (HFF) had its humble beginnings back in 1984, when a handful of concerned community members gathered in an Island Park cabin to discuss threats to the river that they all loved so dearly. HFF's earliest efforts to conserve and protect the river required some serious elbow grease. First, the installation of *seven miles* of solar-powered cattle fencing from Last Chance to Pinehaven (the entire world-famous flat-water section of the Henry's Fork) to prevent riverbank erosion in Harriman State Park. Next, the protection of Mesa Falls from the very real threat of being dewatered by new hydroelectric development. Fast forward to 2024, the Henry's Fork Foundation is now 2000+ members strong, a community who shares that same love of the Henry's Fork and that same passion to protect and preserve it for generations to come. From its earliest days, the Henry's Fork Foundation has been a champion of safe, public access sites, so that adventurers of all ages can have an opportunity to experience the enchantment, the tranquility, the lure of this beautiful river.

At the core of HFF's work is a state-of-the-art water-quality data network, which provides measurements in real time at key river locations for temperature, turbidity, and dissolved oxygen. Combined with weekly physical water sampling and annual aquatic insect monitoring, the Foundation gathers an incredible amount of data. We share this data on our website (www.henrysfork.org) and through daily and weekly water reports. Our world-class science programs and groundbreaking research give HFF a seat at the table, allowing us to identify and propose mutually beneficial solutions to water managers on the Henry's Fork. HFF's goal day in and day out is to conserve the world-class wild trout fisheries in the Henry's Fork of the Snake River, a river that has been called "the best dry fly river in America," and was voted the "country's best trout fishing stream" in a 1998 Trout Unlimited member poll.

Since 1994, HFF has been proud to partner with Fremont Madison Irrigation District as co-facilitators of the *Henry's Fork Watershed Council*. Dr. Mick Mickelson, one of the HFF founders, said, "The Watershed Council was and is an amazing concept and has borne great fruit. It brought together all the necessary groups and individuals in the watershed to carry out meaningful and constructive work with the common goal being the welfare of the river and its people." This collaboration has increased understanding and cooperation among water users throughout the area. A healthy river is beneficial to all water users, and the Watershed Council allows them all to have a voice.

In recent years, HFF has collaborated with many *partners* to initiate Basin-scale water conservation programs, including Precision Water Management, *Farms and Fish*, and the *South Fork Initiative*. These programs have had a huge impact, saving 26,000 acre-ft of water in Island Park Reservoir per year since 2018. (That's 10,000 Olympic swimming pools worth of water, or 19% of reservoir capacity!) These water savings benefit agricultural producers and anglers alike. Reservoir storage savings reduce the need for irrigators to purchase water from the rental pool—saving irrigators their hard-earned dollars. Water savings also benefit fish populations and water quality, and enhance the fishing experience by reducing outflow temperatures, turbidity, and sediment load.

Brandon Hoffner, Executive Director of the Henry's Fork Foundation states, "We strive for scientific understanding that translates to solutions. It is not easy or quick, but we have done that for 40 years. It is also our plan for another 40 years of mission accomplishment. That's why HFF continues to build knowledge, share that knowledge far and wide, and work with partners to innovate solutions."

To celebrate its 40th anniversary, the Henry's Fork Foundation will be holding several events in 2024. Receptions will be held in Salt Lake City March 15, in Boise April 5, and in Swan Valley on August 10. The biggest event of the year will be Henry's Fork Days, held under the big white tent in Island Park June 13–15. Henry's Fork Day festivities include dinner, a live auction, and raffle, plus reunions for previous interns and board members. You can also join us for our weekly summer seminar series, on Wednesdays from 3–4pm, where you can learn about important topics such as water management. Don't forget to find us out on the river at Morning Bites, where you can pick up free donuts and coffee and learn more about the work that we do! There will also be an art contest, called "Casting for Colors." More information about any of these events can be found at www.henrysfork.org/events-and-raffles.



Blue Buffalo Resort
Cozy cabins,
winter adventures
and warm hospitality.
Scan the QR code
for more info and to
book your stay!



scan for menu



Blue Buffalo Grill
American classics
and creative
comfort food.
Open: Mon-Sat
11am-7pm
For Take-Out call:
208.220.7896

3402 N. US-20
Island Park, ID
www.BlueBuffaloResort.com



Most affordable Cabin Ownership Option in Island Park... \$329,900

Completed in 2024, this turnkey, furnished, 576 sq. ft. cabin is nestled on a .3 acre, forested lot in Shotgun. Comfortably sleeps 4. Affordable investment opportunity, great little spot to get away or call home!

- 1 bedroom (+bunk space)
- 1 full bath
- Stainless appliances
- Waterproof LVP flooring
- Electric heat
- RV dump

Call 801-589-3510



Open Year Round

Restaurant

Lunch 11am-5pm
Dinner 5pm-9pm

Tavern

Full Bar w/ Patio Seating
Pool Table
Shuffle Board

Lodging

Cabins
Motel Rooms
Campground

C-Store

Cold Beverages
Clothing
BBQ Supplies
Gifts
Miller Ranch Beef

Lakeside Rentals 9am-5pm

Reserve your rental online today!



208-558-9770



UPCOMING EVENTS

4th of July Fireworks- July 4th 10pm
Pioneer Day Fireworks- July 20th 10pm
Live Music Every Weekend Starting 5/24

**We Proudly Serve
Idaho Grown
Miller Ranch Beef**



Taco Tuesday is Back!
All you can eat Tacos
Every Tuesday 12pm-9pm



SEA-DOO | BRP | can-am | BRP | ski-doo
www.lakesidelodgeandresort.com

Fremont County Commissioner Race

Continued from Page 9



Blair Dance



David Bloxham

8. What are your thoughts on short term rentals? Again, regulations? Enforcement? What ideas do you have for bringing STR owners, business owners, and community members together?

Short Term Rentals (STR) had a significant increase in Fremont County during the Covid-19 period. Since that time there has been a similar decrease in applications for STR permits with 2023 being one of the lowest years since the STR permitting process was implemented. The STR permitting process contains the regulations necessary to be adequately managed including fines and penalties. Three years ago Fremont County, through the Planning Department, advertised a position to take on this responsibility. Much was done to significantly decrease the number of STRs that were not permitted and increase the level of compliance. The state legislature passed a bill in the last legislative session that limited what counties and cities could do to regulate STRs thereby making it more difficult for government oversight. One effective tool for enforcement/regulation that is not utilized enough is directing complaints and concerns to the owner of the property and/or the property management company responsible for the conduct of the tenants. It is easier for us as individuals to complain to law enforcement or to a government agency to solve our complaints rather than turn to a more effective solution.

I support the Fremont County Planning and Building Department and the need to license all short-term rentals in the county.

9. What are your ideas for increasing medical accessibility in the Caldera?

There are two sources for medical accessibility in the Caldera. First, the Fremont County Emergency Medical Services and, second, the Island Park Medical Clinic.

The Fremont EMT crew have a fully equipped ambulance and are fully trained to respond to and properly care for most all emergency situations. There is also back up support from the Ashton and St. Anthony EMT crews and a full time Paramedic for ALS. (Advanced Life Support)

The Ashton Medical Clinic is staffed and supported by the Ashton Medical Center, under the direction of Dr. Tina Scroggins as well as the Ashton Living Center. Shawn Schulberg is the Managing Director of all medical and long term care facilities in Fremont County.

The Island Park Medical Clinic is open and staffed or is available to be open and meet with patients by appointment. The parent company, Ashton Memorial Inc., does it's best to give full business hours at Island Park but lack of volume makes it more challenging to keep it staffed. The solution is for the residents of Island Park to "vote with their feet" by utilizing the services that have been demanded.

I support a bill in the Idaho Legislature Senate Bill 1416 which amends existing law to transfer the Emergency Medical Services Bureau to within the Office of Emergency Management, to designate EMS as an essential government service, and to create the Emergency Medical Services Sustainability Fund. This would help Fremont County fund EMS service within the county. This is important to all Fremont County, but in particular to Island Park.

10. What is your response for BLM removing recreational trails?

The removal of trails by BLM indicates a limited or misunderstanding of the trail systems in Island Park. First of all, BLM has very few, if any, trails they have jurisdiction over. The vast majority of trails are under the control of the Forest Service. Then comes the definition of trail. There are trails for foot, equine, unmotorized, e-bike, motorized under 50" to name a few options. Then there are "trails" or roads for those vehicles that are over the 50" limit. Still, the majority of these roads are governed by the Forest Service.

Admittedly, the Forest Service has closed trails utilized by off road vehicles that were deemed unauthorized, according to the administrative interpretation of the Targhee Forest Plan. Fremont County has no jurisdiction over those decisions and can only give input to the decision makers. The recourse for those concerns is to become actively engaged in the current Targhee Caribou National Forest Plan Revision process that is just beginning.

If elected, I hope to be able to work with state and federal agencies to build trust and cooperation between organizations. We can share our concern over issues, but we have no control over the decision state and federal agencies make. I think local control is best because local elected leaders know the issues of the county they represent.

11. What are your ideas for better maintenance and management of county owned roads throughout Island Park? Particularly Yale-Kilgore with excess truck traffic.

The county road system is huge with Fremont County being one of the larger counties in Idaho at 1,900 square miles. Our Road and Bridge Department is as good as any in the State and is staffed by long term veteran equipment operators and solid leadership. They procure millions of dollars annually in funding to improve our roads and bridges throughout the county and to keep the equipment necessary to maintain the infrastructure in top working order. It is the largest single budget item in the annual fiscal budget. They have a monumental task before them each day especially in times of snow, run off and during peak use. For example, there are just under 800 lane miles to be plowed after each storm. They have to make tough decisions every day in prioritizing what needs to be done. Specifically, the Yale-Kilgore road has been several years in the process of being approved and funded for improvement. This has been a monumental challenge but we are pleased to know that it is coming to reality with sections of it scheduled for construction as soon as weather permits.

If there are concerns or questions on individual matters contact the county Public Works Dept. for assistance. Debbie Davis, our Administrative Assistant, will assist in getting those questions and concerns to the right person for resolution or explanation.

In the next few weeks Fremont County expects to seek bids on a project to improve the Yale-Kilgore Road. This project is in cooperation with Clark County and Clark County has already awarded part of their road project and that is expected to start this summer. Fremont County Road and Bridge Department, under the leadership of Brandon Harris, has been working on grants and funding for this important project for several years. Once the construction is finished, the road should be much improved.

12. What are your thoughts and ideas for trail maintenance and upkeep in Island Park, advisory board for groomers?

The Fremont County Snowmobile Advisory Board has done an excellent job of helping to direct the functions and operations of the winter trail system in Island Park including grooming. The collaboration between Idaho State Parks and Recreation, the Forest Service, Fish and Game, Fremont County Parks and Rec., snowmobile and other recreational vehicle user groups is a diverse and robust combination that can be challenging at times to manage. The Chairs of this board, both past and present, have done a commendable job of directing this variety in the face of difficult issues.

This year presented some unique obstacles with no snow to begin with and then a full winters worth of snow in a short approx. 4 week period. To compound the problem was the failure of the Idaho State Parks and Rec. being unable to release the funding due Fremont County for the new groomer that had been ordered previously and was waiting to be delivered. Further complications came when the groomer to be replaced had a mechanical failure. Additionally, during those snow storms, there were times when the groomers themselves could not travel to get to the groomers. In essence, the perfect "storm". Unfortunately, the groomers and the Fremont County Park and Rec director took undue criticism for circumstances that were largely out of their control.

Fremont County has an excellent Parks and Recreation Department. Grooming snow, particularly in the Island Park area can be tough in winter. This winter has been an extremely tough year as far as lack of snowfall and then a huge amount of snow all at one time. Safety is our first priority and it weather conditions are not safe for trail maintenance, I will always err on the side of protecting Fremont County employees. They do an outstanding job in extreme weather conditions and by working long hours.



Blair Dance



David Bloxham

See 10. Above.

If elected, I hope to be able to work with state and federal agencies to build trust and cooperation between organizations. We can share our concern over issues, but we have no control over the decision state and federal agencies make. I think local control is best because local elected leaders know the issues of the county they represent.

I believe completely and totally in personal property rights. The problem with property rights is when individual property rights of one come in conflict with the individual property rights of another. So, who's rights then prevail? Each party can state and do state that their rights are superior to the others. So, who's property rights are then being violated? That is why we have Comprehensive Plans, City areas of Impact, Building Codes, Zoning Ordinances to help mediate between the conflicting rights of individual property owners.

I strongly support private property rights. People should be able to protect their own property. Neighbors of adjacent property owners also have property rights. Neighbors must be neighborly and respectful of neighbors and their property rights as well.

In addition to 14. above, conflicting desires of competing factions of community members can also be resolved by respectful conversations, compromise and deliberation. These issues can be brought to an advisory vote so that all members of a community can participate and express their opinion not just the competing factions.

There are times when the competing factions of an issue will not communicate respectfully, which is more the norm in today's society than the exception. In some cases, outside arbitrators may have to be brought in to help settle a dispute. The last option is litigation where the decision is placed in the hands of a judge with his or her own biases that may not reflect the desires of either party.

My focus as a Fremont County Commissioner will be helping the entire county and supporting local community leaders. My door will be open to listen and have reasonable discussions with any county resident.

All businesses in Island Park contribute to the overall economy of Island Park. So do all of the individual permanent residents, part time residents and visitors. There are factions that advocate ordinances that could be considered “...egregious over reach...”. There are factions that advocate no governance at all without regard to the rights of others and everywhere in between. These are age old conflicts that have always been there and will never go away and will continue to require some form of governance to help maintain peace and civility for the betterment of the entire community, a community that is the whole body not just a part.

I support local businesses for all of Fremont County. I encourage all county residents to support local, Idaho owned businesses. I am an experienced long-time Idaho agriculture business owner. I will look at Fremont County business practices to see if there are improvements the county can make. I enjoy looking for ways to do things better.



Restaurant
Lunch 11am-5pm
Dinner 5pm-9pm
Daily Specials

Tavern
Full Bar
Pool Table
Shuffle Board
Live Music

We Proudly Serve
Idaho Grown
Miller Ranch Beef

**Lakeside
Lodge**

MILLER RANCH
a side of
beef
ONE IRON

Come Live the Mountain Life!



ipIdaho.com



Patty Laritz-Bithell | Patty@IpIdaho.com | (208) 860-4846



Income from Nightly Rentals - Commercial
3519 Yale Kilgore
MLS # 2157469
\$1,250,000



2 RENTAL UNITS
3771 Moose Breath Lane
MLS # 2161921
\$840,000



Lots in Buttermilk Area
TBD Totem Rd
MLS # 2161709, etc
\$199,900 Ea/lot



NEW SUBDIVISION
4920 Alpenglory Way
MLS # 2160452
\$264,000



Great Views - Two Cabins - Active Rental
3755 Bishop Mountain Dr
MLS # 2163974
\$1,879,000



2+ Acres
YALE CREEK
4125 Ponderosa Dr
MLS # 2160382
\$225,000



4 active nightly rentals - 5+ Acres - Commercial
3555 Yale Kilgore
MLS # 2156139
\$2,000,000

LIST RIGHT

I prepare a strong value proposition for potential buyers. We get the cabin in the right condition to list at the right price, then highlight your home's attributes with professional photography, drone footage, and/or 3D tours as appropriate to the market.