

Inside This Edition

Crossword	Page 2
Toy Rental Companies	Page 5
Restaurant Hours	Page 8
Fishing Report	Page 10
Local Events	Page 15

Follow us on
Facebook



The Caldera Times
Island Park, Idaho

Read for free at:

www.TheCalderaTimes.com

Have an event coming up? Hiring? Know someone who should be highlighted? Want to write to the editor?
Jen@TheCalderaTimes.com 406.209.0022

Island Park EMS Fundraiser Oktoberfest

Friends of the Island Park Ambulances Oktoberfest fundraiser for the EMS is coming up on October 7! It should be a fantastic evening of fun, games, food and prizes for all who attend.

This year, it seems the EMS crew has received fewer calls, but they have been more intense in nature and needs. The rescue from Sawtelle Peak most recently was among those. Because they operate in Island Park, their equipment is vastly different than those EMS crews that operate in the valley.



The team has some ideas on what they would like to add this year, but haven't made final decisions, since they don't know the amount that will be raised. New winter gear for snowmobile calls is needed, they currently have older, heavier gear that they have to remove when they arrive in order to do their jobs, Taylor says the cold sets in pretty fast while they work on the wounded. New lighter gear would not require shedding layers to work.

They would like an AED device (which can restore a regular heart rhythm to a heart attack victim) to add to their personal cars. This would allow the first member of the crew who arrives to begin to administer help rather than wait on the remaining crew to arrive with the ambulance. Minutes count, and the extra few could save your life.

After the rescue on Sawtelle Peak this year, Taylor also realized additional training is definitely a need! They risked their lives to rescue the patient, and Taylor indicated it was a pretty terrifying set of circumstances. Training with search and rescue for these types of calls would be greatly beneficial in how they react to the next difficult call, and should prove effective in better protecting the EMS crew during a call out.

Continued on Page 18

Don't forget this event tonight, the 21st!!



Island Park area Chamber of Commerce
2023 Mixer and Elections
Thursday, September 21st 2023



Come meet the Chamber Board Candidates and VOTE

INCUMBENTS

Glade Gunnell, Rob Illum and Kerry Almond

NEW CANDIDATES

Monika Boyce, Steve Fernelius, Wayne Lower, Flint McCloud & Tony Peterson

What: Chamber Mixer & Elections~Appetizers provided~Drinks and Soda bar available

When: Thursday 09/21/23, Mixer & Elections 6:00-7:30

Where: *Life Sabor!*

If you are a paid member and unable to attend, you can request a ballot. Text "ballot" to 208-881-4521

Mountain Life Charitable Foundation: A team approach to making Island Park a better place to live



The Mountain Life Charitable Foundation grew out of a common passion among a group of friends, a love for Island Park, Idaho, the town we call home. From all ends of our beautiful town, Pinehaven to Henry's Lake, Buttermilk Loop and the Shotgun Valley, everyone on the team has a strong passion for Island Park and living the mountain life. The Mountain Life Team was founded in 2020 by Patty Laritz-Bithell and her assistant, Andy Zehrung. Tina Crow joined the team not long after, and by 2022, Kristen Andelin Shawna Fuller and Lynette Tingey were ready to join as well. The group formulated a plan to start their own brokerage to support the growing team. They launched MLR in 2023, and Troy Ericson joined the brokerage shortly thereafter.



Every member of the Team has been involved with Island Park fundraising events, but the Team wanted to make a bigger difference and have a direct impact. They wanted to be able to get involved in shaping the growth happening in town, and support local events that provide us

with a sense of community. They wanted funds to go to the causes that matter most to those living here, and for all funds raised to be spent in Island Park. It was apparent that their many ideas needed a new outlet. The team unanimously decided to form the Mountain Life Charitable Foundation to create an organization dedicated to supporting Island Park. The Foundation is growing a fund to have on hand for supporting neighbors in need, as well as an endowment to support the development of community resources. As part of the teams' commitment, each member contributes to the Foundation from each commission they earn.



The Team has a lot of energy and has already been making a difference. Prior to officially coming together as a Team, the members worked with local businesses to put on a Snowmobile Fun Run that raised over \$6,000

Continued on page 10

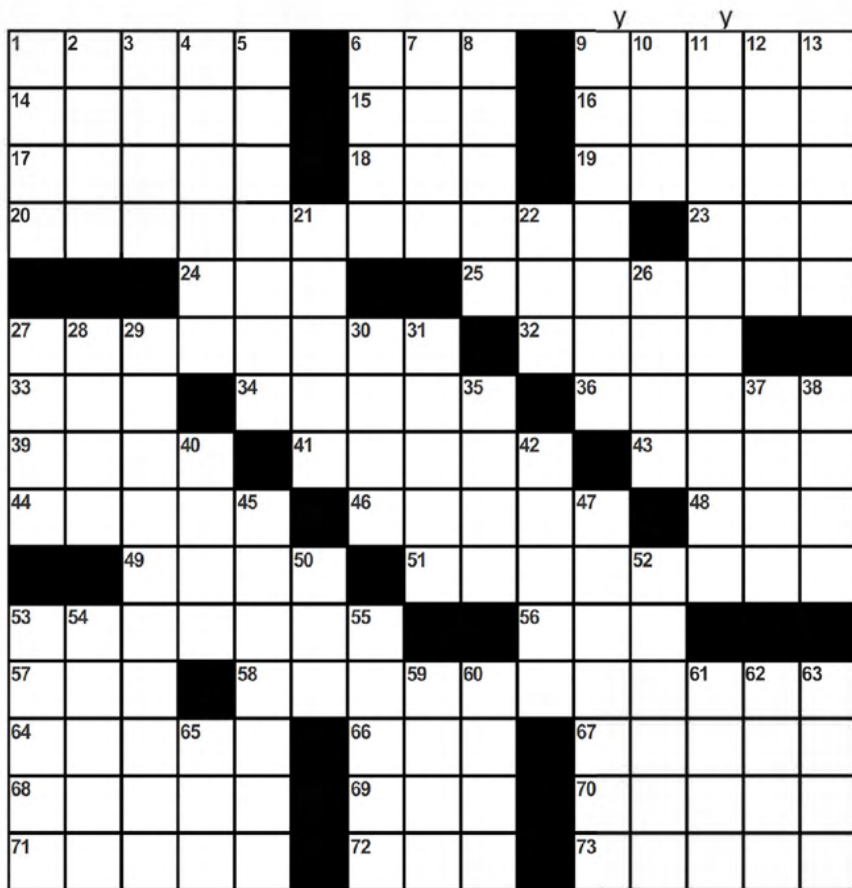
Crosswords

ACROSS

- 1) Eyeglasses, informally
- 6) Impressive degree
- 9) Turkish generals
- 14) Artistic stand
- 15) Word from a finger-pointing chooser
- 16) Constructed
- 17) Jungle vine
- 18) Affirmative action?
- 19) "Tomorrow" musical
- 20) Aggravation at a lack of progress
- 23) Type of modern testing
- 24) Airplane passenger's concern
- 25) Addressed a waiter
- 27) Pronged weapons
- 32) ___ fide
- 33) It may be right above a knee
- 34) Down's partner
- 36) The time being
- 39) Knocks on a door
- 41) Begets
- 43) Gulf War missile
- 44) Stand on its head
- 46) Jack's nemesis
- 48) .0000001 joule
- 49) Went out, as a fire
- 51) Jewish sect member of old
- 53) Small scrap
- 56) It can help with a housewarming
- 57) "Overhead" engine part
- 58) A dam is one, essentially
- 64) States with conviction
- 66) "___ we having fun yet?"
- 67) First thing read, typically
- 68) Camelot weapon
- 69) One way to move quickly
- 70) Alpha's opposite
- 71) Church part
- 72) Tennis match segment
- 73) Chart anew

DOWN

- 1) "To thine own ___ be true"
- 2) Au ___
- 3) Jacob's twin
- 4) Used a thurible
- 5) Like proper venetian blinds
- 6) Bird that repeats (var.)
- 7) Cowboy's pride
- 8) Part of a TV feed
- 9) Leave high and dry
- 10) Big bang creator
- 11) Things that get in the way
- 12) Type of skirt that flares outward
- 13) "Farm" or "home" attachment
- 21) Some members of Indian royalty
- 22) Kingly sphere
- 26) "The Dukes of Hazzard" spin-off
- 27) By way of, briefly
- 28) Acquire in the field
- 29) Roadblock
- 30) H.S. math subject
- 31) Bacon bit
- 35) "Awright!"
- 37) Be a good doctor
- 38) Competitive advantage
- 40) Quick haircut
- 42) Big mess
- 45) Coup participant
- 47) John Deere product
- 50) Belle of the ball, briefly
- 52) One of these days
- 53) La ___ (Milan opera house)
- 54) Type of base
- 55) Autocrats no more
- 59) Common test answer
- 60) Lease
- 61) Agenda unit
- 62) Legendary gymnast Korbut
- 63) Tide type
- 65) Former electronics giant



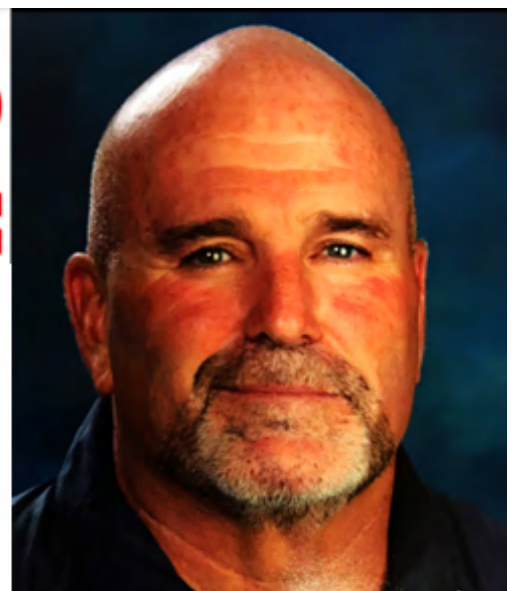
- **Local Agents**
- **Local Office**
- **Best Results**

Call for your **FREE** Market Analysis on your cabin or lots



IDAHO'S REAL ESTATE

Find the Best Cabins & Lots At www.IdahosRealEstate.net



Rod JONES

THE DIFFERENCE BETWEEN LISTED & SOLD

(208) 313-0000

Want yours sold? Call us!



"Idahos' *Jewell*"

(208) 241-7769

EVERYTHING we touch turns to **SOLD!!**

The Water That Supports Us: Island Park Reservoir



So many of us play on the waters in Island Park Reservoir! It provides such a beautiful spot to recreate in many ways; boating, fishing, bird watching, swimming, among a few. The water levels vary so much from the beginning of the year to the end of the year, which can be both a blessing and a curse for those that use these waters. Obviously, boaters suffer when the water is lowered, but the bird populations thrive on the sand bars and banks as the water recedes. Technically, the water belongs to the farmers in the valley, and, is also used to help manage the flow for the fishery below the dam.

In the 1910's, after the success of the Minidoka Dam, several further dams had been planned to provide irrigation water to the farmers settling in Idaho. One of these was planned on the Yellowstone Lake, which would have flooded the Falls River area in Yellowstone National Park. After the fiasco over the dam in Yosemite National Park (O'Shaughnessy Dam was sold to a private company within the parks boundaries), this project had strong opposition from conservationist, who successfully lobbied Congress to abandon the idea of building within the Yellowstone Park boundaries.

The fall of 1933 the Bureau of Reclamation began investigating the Island Park Dam site. And, in 1937, after two decades of fighting between farmers and conservationists, two dam sites were identified as a compromise to the lack of irrigable waters: the Island Park Dam and the Grassy Lake Dam. Both were to be built on a much smaller scale than the original proposals in order to minimize their effect on the park.

Max J Kunney Company was hired as the contractor to build the Island Park project. They started with a small power plant on the Buffalo River to provide electricity for the larger dam build. Charles Pond from Ponds' lodge ultimately purchased the Buffalo River Power plant to provide power to Island Park's resort businesses. Prior to that time, electricity was provided by a gas-powered generator system. R.E.A. would not establish power lines until 1947.

Construction on the larger Island Park dam, which is an earth filled dam, began in 1937 and was completed in 1939. The project provided many greatly needed jobs to many who were severely impacted by the Great Depression. The 94 foot dam has an elevation of 6,312 feet and is 1,600 feet long with a 7,950 foot dike along the east side and holds back 135,000-acre feet of water storage created to supply irrigation water to nearby towns in Idaho. Since then, they did some major renovations in the 1980's to repair concrete work and shore up some areas. The spillway



crest is 6,302 feet, and the emergency spillway located along the dam sits at 6,309 feet.

In 1994 Fall River Rural Electric Cooperative added a 20,000 megawatt hydropower plant at the dam. It was at that time that the one-foot adjustable bladder was added to the top of the spillway, bringing that potential crest to 6,303 feet. This addition allowed them to maximize power generation, and to mix the water released to optimize the temperatures for downstream fish habitat.



Island Park Reservoir is the highest water-management priority in the watershed, subject to meeting irrigation demand because of the multiple benefits it produces; irrigation, hydropower, water quality, and fisheries. The current water management system was put into place in 2018, and has resulted in an increase in carryover water by an average of 48%. The goal of management in to fill the spring reservoir as far ahead of

potential irrigation needs as possible and then pass natural runoff events through. This, at times, causes rapid increases and decreases in outflow with bigger rain events. Research has been done to indicate that the increased outflow mimics what would be natural increase in flow in the fisheries below the dam based on the same larger rain events.

The fall management has the goal of filling the reservoir after irrigation needs end in order to create a larger surface area on the 7,794-acre lake. This effort helps to collect a greater net gain from the precipitation that falls directly on the lake surface. Mind you, when available and practical, Island Park water is used to help fill other reservoirs downstream when needed in the fall, so it can be drafted below ideal holdover levels beyond irrigation needs in the fall.

There have been several years where water levels are below ideal, the 1979 and 1992 draft resulted in only the river channel flowing through the lake. 1981 was drafted to 9.3%, 2003 was drafted to 8.9%, 1984, 2001, 2002 and 2007 were drafted to 14.8%, and the most recent that most of us remember is 2016, which was the lowest inflow recorded since 1937, when it was drafted to 15.1%. The hydroelectric plant cannot operate if the lake is drafted to

Continued on page 18

ISLAND PARK SOAPS
PRICE LIST
PRICE IS PER BAR

Island Park Creative Soaps

208-521-1936

50 BARS+	\$ 1.85
100 BARS+	\$ 1.75
150 BARS+	\$ 1.65
200 BARS+	\$ 1.55
250 BARS+	\$ 1.45
300 BARS+	\$ 1.45

SOAP LABELS ARE HANDMADE AND ORDERED WHICH TAKE A WEEK AT LEAST IF NOT A LITTLE LONGER

MVC
McCLOUD SERVICES

Excavation - Plumbing - Utilities
Gravel - Roadbase

208-223-2382
flintmcloudconstruction@gmail.com

Silent Paw Mobile Dog Spa

Dog grooming delivered!

Heather Barnes definitely feels like she has found her calling! It wasn't immediately evident to her, but after attempts at other professions, she has migrated back to dog grooming every time.

Born and raised in Laurel, Montana, Heather started grooming her sophomore summer, in 2008. Her mother was the mail carrier and learned of the position while she would wait for her Mom to meet for lunch on her route. She started with the basics, bathing brushing and drying that summer, and worked her way up to clipping during her Junior summer, learning how to correctly hold the scissors, clippers and how to do full body shave downs.

Before



After



It was a great summer job, but she hadn't considered it as a career, and since Heather had spent so much time in the garage with her Dad, both her Junior and Senior year she went to a Votech school for auto mechanics, and in 2011 graduated high school and did a semester of college to be an Auto Technician. She took a job with Toyota thereafter, but, didn't get the additional training she had anticipated, and found the work to be physically challenging. Maybe this wasn't the right path, and more of a hobby

Heather drifted a bit after leaving Toyota, unsure of what she really wanted to do. There were several jobs at the same time, to make ends meet. She did eventually go back to dog grooming for the same shop where she learned the basics, the shop owner, who had an established clientele, would refer the new clients she couldn't manage in her schedule and allowed her to use the extra shop equipment to work. She also took a bartender position, where she met her husband in 2016.



Continued on page 15



Christie Cameron

Year Round Local Realtor
208-351-0816

Christiecameron7@gmail.com
Licensed for 23 years in Island Park



3320 Hwy 20 - Last Chance
www.rainbw.com



Welling Rental

3 bedroom - 2 bath
1 acre - water access
\$749,000



Red Rock Rd

47 acres - Borders Forest Service - near Henry's Lk
\$1,250,000



Eagles View

2.25 acre - mountain views
IP Reservoir access
\$158,000



Last Chance Rental

5.46 acres - 4 bedroom suites, 5 bath
\$1,350,000



Yale Creek Lot

Has power and septic.
1.75 acre lot 2 RV spots
\$205,000



Shotgun Lot

Camper lot
Community Water
\$150,000



American Falls Car Wash

3 bays - cash business
call for more information
\$689,000



Hwy 20 Commercial

2 acres - has water, power and sewer hookup
\$1,499,999

Recreation Maps



Scan to download the Avenza Map App. Create an account, it's free. Find the Island Park Motorized Recreation Map, both North and South for all of the Island Park area. Find your trails and enjoy yourself. Please, don't forget, cell coverage here is difficult in most areas, don't count on it for your navigation. Use a paper map, or download your map to be sure you can use it.

LAKESIDE RENTALS
Island Park Reservoir

208-558-9770

SEA-DOO can-am ski-doo

Equipment Rental Island Park

Lakeside Lodge

3857 Lakeside Lodge 208.558.9770

6 seat Defender	\$409
4 seat Commander	\$389
Sea-Doo Spark/Trixx	\$250
Sea-Doo GTX Pro 130	\$309
Boats Starting at	\$425
Kayak 1 Seat	\$ 50
Kayak 2 Seat	\$ 80
Stand Up Paddleboards	\$ 50
Bakcou Mule Fat Tire Mountain E-Bike	\$165



Island Park E-Bike

3413 US Hwy 20 208.351.5932

E-Bike	1/2 day \$85	Full day \$125
Kayak	3 hrs \$50	Full day \$90
Paddle Board	3 hrs \$40	Full day \$80
Float Tube	3 hrs \$20	Full day \$35

High Mountain Adventures

4141 Sawtelle Peak Rd 208.558.9572

Razor Trail 900 50"	\$299
Razor XP1000 2 Seat	\$329
Razor XP1000 4 Seat	\$399
Razor Pro 2 Seat	\$349
Razor Pro 4 Seat	\$419
Kayak	\$39
Triple Kayak	\$60
Raft	\$99
Paddle Board	\$49
Float Tube	\$25

Island Park Adventures

3342 N Hwy 20 208.558.7581

Defender Max	\$419
Commander Max	\$399
Maverick Trail	\$299
Outlander Max	\$239
Outlander	\$199
Sea Doo Spark 3-UP	\$229
See Doo GTX	\$329

TARGHEE TRAIL RIDERS

ISLAND PARK, IDAHO

Association goals are:

- Promote respectful riding
- Respect and keep your distance from wildlife
- Stay on designated trails
- Work with Parks and Recreation to keep trails cleared and open
- Work with local agencies such as BLM, Forest Service and Parks and Recreation to provide summer trails that make a complete loop and do not dead end
- Work with local agencies to provide trails for OHV over 50 inches
- Encourage registration and stickers

This group is open to anyone that shares a love of this area and the trail systems. Simply email us at TargheeTrailRidersIslandPark@gmail.com to join. We have a Facebook group called Targhee Trail Riders Island Park Idaho where information regarding upcoming events and important announcements will be posted.

Please join today!

Health Warnings for Island Park Reservoir!!

Recreate wisely from now until the end of the season. The Idaho Department of Health and Welfare is issuing a health advisory for Island Park Reservoir, urging caution when recreating in or near the water.

Recent samples from Island Park Reservoir showed high amounts of toxin-producing cyanobacteria. The toxins they produce (cyanotoxins) can be harmful to people, pets, and livestock.

DHW works closely with the Idaho Department of Environmental Quality to identify, respond to, and monitor cyanobacteria harmful algal blooms. Please visit the Idaho Recreational Water Health Advisories tab at the Get Healthy Idaho website for advisories and sampled locations at water bodies throughout Idaho.

When recreating near or in Island Park Reservoir, take the following precautions while the advisory is in effect:



- **Ensure pets and livestock do not drink or go into the water. If they have contact with the water, clean skin, hide, or fur with clean water right away.**
- **Do not drink or cook with the water. Boiling or filtering the water does not remove the toxins and can increase the risk of becoming sick.**
- **Wash hands thoroughly in clean water after handling fish or objects from the water.**
- **If you choose to eat fish from the water, clean and wash fish thoroughly in uncontaminated water. Filet the fish, and remove all fat, skin, and internal organs before cooking. Cyanotoxins can build up in fish, and the risk to people is unknown.**
- **Watch for symptoms. If you touch or swim in the water or inhale water droplets, you might experience a rash, hives, red eyes, wheezing, coughing, or shortness of breath. If you swallow the water, you might have stomach pain, diarrhea, or vomiting. You might have a headache, muscle weakness, or dizziness.**
- **If your liver is damaged, your skin might turn yellow, and you will have dark urine. If you think you might be sick from cyanotoxin, consult your healthcare provider or call the poison center at 1-800-222-1222. In addition, notify algae@deq.idaho.gov.**
- **Monitor media reports and DHW's website for health advisories.**

Island Park's Newest Little Souvenir Shop With the Biggest Heart

Ready to take home your unique souvenir or gift from your visit to Island Park? The brand new Island Park Souvenir and Gift Shop is open! Located at 3519 Yale-Kilgore Road, our littlest shop with the biggest heart offers a wide range of specialty and one-of-a-kind items to commemorate the memories you make in our beautiful area.

Whether it's a t-shirt, hat, postcard, or trinket, we have something for everyone. Friendly staff will be on hand to help you find the perfect gift or keepsake to bring home.

Why wait? Come see us and take home your piece of Island Park. Can't wait to see you!



If your liver is damaged, your skin might turn yellow, and you will have dark urine. If you think you might be sick from cyanotoxin, consult your healthcare provider or call the poison center at 1-800-222-1222. In addition, notify algae@deq.idaho.gov.

Monitor media reports and DHW's website for health advisories.

Cyanobacteria are a natural part of Idaho's water bodies. The amount of bacteria usually increases rapidly when the temperature of the water rises and there are nutrients for the bacteria to grow (bloom). The blooming can release toxic chemical compounds (cyanotoxins) into the water.

Blooms don't all look the same. They may look like mats, foam, spilled paint, or surface scum, and have a foul odor. Algal mats can be out of sight on the bottom of the water body.

Pets, livestock, and wildlife can get sick or die within minutes to days after cyanotoxin exposure. Dogs can become sick first because they are more likely to swim in or drink contaminated water or lick contaminated water or bloom material from their fur.

If your pets or livestock have been in the water, immediately wash them with clean water to keep them from licking cyanobacteria off their bodies. Seek veterinary care immediately if your pets or livestock seem sick after going in or drinking the water.

EAST SUMMIT
EXCAVATING

SERVING EAST IDAHO

EXCAVATING, GRADING, SEPTIC

Call or Text for a Free Quote

(208) 569-6017

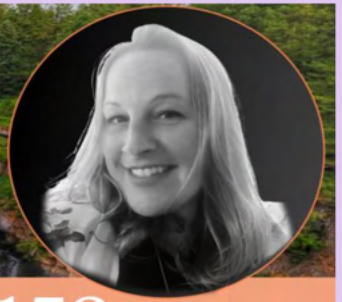


Christi Spinner

KW KELLERWILLIAMS REALTY EAST IDAHO

208-604-2153

Serving Island Park & All of South East Idaho



4216 Shoshone VACATION RENTAL Comes "Turn Key" w/ all Furnishings! True Log Home in Island Park Village Resort & Golf Course. Beautiful cabin Offers a Cozy Fireplace, Kitchen w/ great Counter Space & Open Flow Dining room & living room for Gathering, vaulted Ceilings, Open Loft w/ wet Bar and Master En Suite. Downstairs Game Room w/ Walk Out Basement. Perfect Location, Year Round Access. MLS#2157474 \$699,000



5085 Trumpter Stunning Cabin in a Secluded and Quiet Lake Front Subdivision On Henry's Lake, Very Successful Vacation Rental. Fully Furnished & SOLD "Turnkey". Take in the Most Beautiful Lake, Mountain, & Sunset Views, Perched on a Manicured Corner Lot, Beautifully Landscaped, Firepit Area, Room For RV, & Huge Deck Wrapping the Home, Large open Kitchen, Dining and Living room for Gathering & Entertaining. Attached Heated Garage for all the Toys. World reknowned fishing! MLS#2157924 \$1,399,000



5085 Taylor Mountain Luxury Living with Rustic Charm New Build in Centennial Shores Gated, Waterfront Community, Fully Furnished & Turn Key, This cabin boasts 360 Lake & Mountain Views, 5 bedrooms 5.5 baths (2 masters) fully landscaped yard front & back, granite throughout, custom cabinetry, heated bath floors, Forced Air heat & AC, huge shop w/ full apartment above. Very short walk to one of 3 private Island Park Reservoir accesses. Year Round Access. \$1,999,000



GATED WATERFRONT COMMUNITY! 2 community Boat Launches w/ docks & an acre of manicured park, the South end has a sandy beach for swim days. Vacation Rentals Allowed. Corner lot. MLS#2154889 \$239,900



Eagles View Subdivision Centennial Mountain & Lake Views. Subdivision borders 1300ac of Trude. Short term rentals allowed. Private Runway/Landing Strip and Sandy beach access exclusive to HOA, 3.13 Acre lot. Allows for Short term rental and has year round access. MLS #2153148 \$180,000



Elk Creek Estates 3912 Chief Joseph Drive, Island Park MLS#2154048 \$495,000



3512 Glen Tree, Island Park MLS#215555 \$299,000



Beautiful **WATERFRONT LOT** in gated Centennial Shores Subdivision. Outstanding Centennial Mountain Views & Island Park Reservoir Views coupled with Unobstructed Sunrise and Sunsets. Allows for Vacation Rentals & Guest House in Addition to Main House. One of the last remaining! MLS #2152830 \$950,000



ICE HOUSE CREEK subdivision. Creek Frontage, woods and fantastic views. This subdivision is mostly 5ac + parcels so plenty of elbow room. Year Round Access, Option for Rental Use, Allows Horses, PERC test already done with standard septic approved.

5.11 Acres \$387,000 MLS #2151065 6.39 Acres \$399,000 MLS #2152830



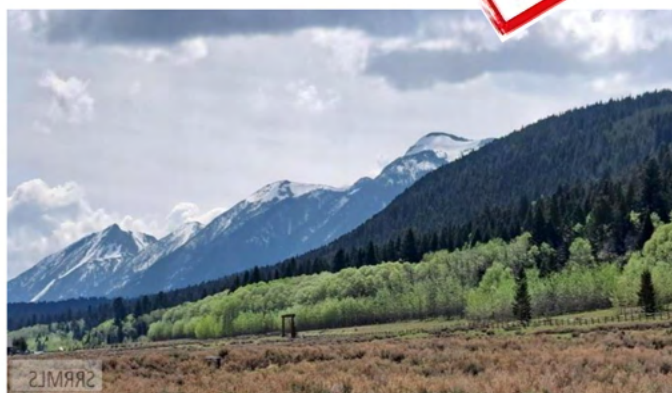
756 Idaho Street, Ashton MLS #2151988 \$259,900



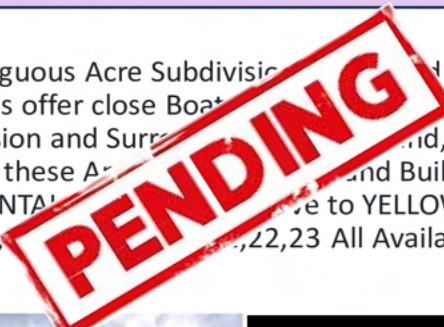
Fisher Pointe Lots

88.83 Contiguous Acre Subdivision

Positioned above the SW end of Henry's Lake. There are 15 Parcels offering close Boat Launch Access to Henry's Lake for World Renowned Fly Fishing, Soaring Views of the Greater Yellowstone Rocky Mountain Range, Paved and County maintained roads to Subdivision and Surrounded by State Land, BLM and Caribou National Forrest. Buy all 15 of these Amazing Properties and Own Your Dream. Year Round Access and **ALLOWS SHORT TERM RENTALS**. Just a 20 min drive to **YELLOWSTONE NATIONAL PARK**. Purchase bulk and save! MLS#2152805 \$2,250,000



Gorgeous, 100+Contiguous Acre Subdivision positioned above the SW end of Henry's Lake. These 5-7 Acre Parcels offer close Boat Launch Access, Paved and County maintained roads to Subdivision and Surrounded by State Land, BLM and Caribou National Forrest. Buy one, two or 15 of these Amazing Properties and Build Your Dreams. Allows for **LONG OR SHORT TERM RENTALS**. Just a 20 min drive to **YELLOWSTONE NATIONAL PARK**. Lots 1,2,3,4,5,6,12,13,14,15,16,17,18,19,20,21,22,23 All Available ranging from 215k-265k



FISHER POINTE AT SAWTELL MEADOWS SUBDIVISION

ACREAGE:	
Lot 1=5.43	Lot 14=5.64
Lot 2=5.11	Lot 15=5.33
Lot 3=5.31	Lot 16=5.69
Lot 4=5.45	Lot 17=6.49
Lot 5=5.38	Lot 18=6.04
Lot 6=5.41	Lot 19=6.30
Lot 7=5.41	Lot 20=5.00
Lot 8=5.37	Lot 21=5.27
Lot 9=5.35	Lot 22=5.35
Lot 10=5.37	Lot 23=5.00
Lot 11=5.08	Lot 24=5.29
Lot 12=6.03	Lot 25=5.25
Lot 13=6.80	Lot 26=5.09

STATE LAND

TARGET NATIONAL FOREST

Buying or Selling
Island Park

Jackie Jensen
208-390-8303



Local Island Park Realtor
Outback Realty

- **COMMERCIAL PROPERTY**
- **RESTAURANT**
- **1.7 ACRE**



- **THIS IS TURN-KEY AND READY TO START RUNNING YOUR OWN BUSINESS**

MOUNTAIN LIFE CHARITABLE FOUNDATION



ABOUT US

The Mountain Life Charitable Foundation was formed to give back to the community we all love and build an even better town for future Island Parkers. We are fundraising to establish a fund to support residents facing hardships, and to grow an endowment for a community housing program. We will also host or sponsor events to support other local organizations.



MountainLifeCharity.org
Info@MountainLifeCharity.org

CONTACT US

(208)-860-4846
PO Box 441
Island Park, ID 83429

Caldera Restaurant Days and Hours

Anglers Lodge & Riverfront Restaurant
3363 Old Hwy 191 208.558.9555
12 pm to 10 pm

Cafe Sabor
4298 Hwy US-20 208.558.9300
Wednesday - Saturday 11 am - 9 pm
Sunday 12 pm - 8 pm
Closed Monday and Tuesday

The Cafe at Island Park Lodge
4149 N Big Springs Loop Road 385.227.1197
Closed Sept 24th to Oct 9th
Winter hours
Mon - Fri 10 am - 6 pm

Connie's Restaraunt
4130 Quakie Lane 208.558.6987
Sunday & Monday 4 pm - 9 pm
Thursday 4 pm - 9 pm
Friday and Saturday 4 pm - 10 pm
Closed Tuesday and Wednesday

Happy Anglers Cafe
3340 Hwy 20 208.497.9455
Sun and Mon 8 am - 12 pm
Tues - Sat 8 am - 1 pm

Lakeside Lodge
3857 Lakeside Lodge Lane 208.558.9770
Daily
Lunch 11 am - 5 pm
Dinner 5 pm - 9 pm
Bar 10 am - Close

Meadow Creek Lodge
Meadow Creek Road 208.351.2787
Closed until Snowmobile season

The Parlor at Mack's Inn
4169 N Hwy 20 208.558.2450
Tuesday - Saturday 11 am - 9 pm

Pond's Lodge
3757 Hwy 20 208.558.7221
Main Kitchen: Wednesday - Monday 11 am - 9 pm
Pizza Kitchen: 7 days a week 11 am - 10 pm

Springhill Suites Island Park
4292 N Highway 20 208.558.2400
Thursday - Monday 4 pm - 10 pm
Closed Tuesday and Wednesday

Subway
4141 Sawtelle Peak Rd 208.558.9884
Monday - Saturday 8 am - 7 pm
Closed for the season starting Oct 1st

Twisted Pine @ Historic Phillips Lodge
3907 Phillips Loop 208.390.8303
Check Facebook for openings

Trouthunter-Last Chance Bar & Grill
3327 Hwy 20 208.558.8006
Daily
7 am - 9 pm
Closed for the season starting October 15th

Island Park

GROCERY DELIVERY

Order and pay online

WALMART REXBURG
ALBERTSON'S REXBURG
BROULIMS REXBURG

Order and pay for your groceries at any of the above 3 locations. We will pick up and deliver (fridge items will be put away) prior to your arrival. Pickup days may vary please call prior to ordering for schedule and pricing.



Dennie
(208) 571-5781

Colleen
(208) 317-4872

Same Pig, Different Lipstick

By Karen Schumacher



You put lipstick on a pig, it's still a pig, or at least the saying goes. Such is the case with this newly renamed federal agenda.

First a brief background. America's Great Outdoors Initiative (AGOI) (obamawhitehouse.archives.gov/administration/eop/ceq/initiatives/ago) was created in 2010 via a memo (<https://obamawhitehouse.archives.gov/the-press-office/presidential-memorandum-americas-great-outdoors>) by the Obama administration. Its purpose was advancing land conservation, expanding recreation, and creating jobs. Per the memo directive, across the United States landscape conservation cooperatives (LCC) were created by the Department of Interior, and an LCC network was organized. LCC's were non-governmental organizations (NGO) intertwined with federal and state governments to advance these objectives. After being given millions of dollars their trough dried up with President Trump and only a few carried on. 30 x 30 was part of Biden's Executive Order (EO) 14008 dictating 30% of America's land should be placed in conservation by 2030. According to an article published by The University of Nebraska-Lincoln Center for Agricultural Profitability, "18%, or 437 million additional acres, would need to be protected in order to reach the 30x30 goal." The goal of both the memo and the EO is taking land for permanent non-use and giving it back to the wild.



When you use our affiliate link, we earn a small commission from qualifying purchases. Basically, through this EO, federal agencies created the Conserving and Restoring America the Beautiful report. (www.doi.gov/sites/doi.gov/files/report-conserving-and-restoring-america-the-beautiful-2021.pdf). This preliminary report, a regurgitation of AGOI, was presented to the newly formed National Climate Task Force in May. This is the beginning implementation of 30 x 30.

sovereign states, nationally. The plan is basically a blanket of their grandiose schemes to dictate and control land use under the guise of conservation at a national level, not fully achieved by the LCC Network before its funding dried up.

While vague in several aspects, including there not being any clear definition of what is meant by conservation, the report does have some identifiable recommendations. Interestingly, a special note is made that conservation is separated out from the concept of "protection" or "preservation". Hmm, that isn't the dictionary definition. Ah heck, let's just make this up as we go. The report also indicated guidelines will be proposed to determine "whether lands and waters qualify for conservation". Does that mean if the federal government decides land in Idaho qualifies for conservation Idaho will be obligated to conserve it?

While the CLLC claims a National Academy of Sciences (NAS) review of LCC's was glowing, that wasn't exactly the case. The review concluded "...that it would require the LCCs to develop a process that can account and track how their planning efforts result in the implementation of on-the-ground conservation." In other words, for the amount of money given the LCCs did not deliver on conservation promises. A letter stating this conclusion by Rep. Bishop has been removed from the Natural Resource Committee website but can partially be read here (<https://thewesterner.blogspot.com/2018/01/zinke-says-science-is-key-to-agency.html>). If anything, the roadmap attempts to integrate some of the NAS report criticisms such as adding new voices to the mix and sucking in private property owners. But the drawbacks in this roadmap also include the return of the ominous corridors and connectivity agenda.

Curiously, reference was made to the accomplishments of previous conservation measures. Prairie Potholes, which is permanently protected wetlands for non-use, and Crown of the Continent which is an example of "Landscape-scale protection". Both obliterate the boundary between Canada and the United States with decisions being made by the government and NGOs (Non-profit organizations that operate independently of any government).

Its recommendation to create a National Landscape Conservation Council replicates the LCC cooperatives entanglement with federal and state agencies, Tribes, and NGOs, only now expanded to include a mix of backgrounds and ethnicities. Somehow, being no different than cooperatives, this would allow better collaboration on projects crossing multiple jurisdictions. In reality, the LCC Network already tried this, just another pig with lipstick. Sources for funding were spread throughout this roadmap.

Following several diatribes about America being oppressive, discriminatory, unjust, and unequal in opportunity the report claims to have received input from several diverse groups, primarily NGOs, government agencies, and businesses, and included the claim that often input validated the initiative's direction. A new special emphasis was placed on "private property rights being honored and respected."

While it may seem the CLLC created this roadmap it also included input from the U.S. Fish & Wildlife Service, Bureau of Land Management, Congressional staff, other NGOs, and the Salish Kootenai Tribes.

Other recommendations include creating more parks, expanding and conserving wildlife migration corridors, expanding marine sanctuaries, unlocking access to inaccessible public land, and the intent to "support outdoor recreation, including appropriate designations to improve conservation". The question is, how is outdoor recreation supported when land is in conservation? It has to mean either no use to protect it, or, use is dictated and controlled. And of course all of this will create jobs, that is union jobs.

For private property owners, keep an eye on your local planning and zoning decisions and comprehensive plans, this is where conservation principles are inserted. This Jackson, Wyoming (<https://www.tetoncountywy.gov/DocumentCenter/View/1670/Town-of-Jackson-Land-Development-Regulations-PDF?>) document provides an idea on conservation regulations. If your local friendly NGO member comes knocking at your door, be aware of their intent to educate you about conservation on your land or convincing you to put your land into a conservation easement.

One special recommendation is the creation of an American Conservation and Stewardship Atlas which would allow the collection of data on how much land is conserved, including private land, even though other government agencies collect this type of information. The Atlas will be generated by federal agencies.

Neither report is very long and although somewhat repetitive and full of feel good language, it is clearly a rehash of NGOs becoming extended arms of the government in which once again tax dollars will pay for an agenda that will be used against taxpayers. But this pig's lipstick also has a very nasty color, and that is one of a nationally dictated plan over land use, which essentially will continue to erode state sovereignty over land issues. Idaho, with the majority of land being managed by the federal government, will be a primary target for this agenda.

The Center for Large Landscape Conservation (CLLC) is drooling over and celebrating this new agenda and has already created a "roadmap" (<https://largelandscapes.org/wp-content/uploads/2021/04/Landscape-Conservation-Framework.pdf>) for its implementation and success. Its "Build Back a Better National Landscape Conservation Framework" roadmap reestablishes LCCs, but now renamed landscape conservation collaboratives rather than cooperatives. Another pig with lipstick. These collaboratives would create a national network, with your tax dollar funding them of course. Bear in mind, these NGOs have no acknowledgement of, nor respect for, jurisdictional boundaries, or recognition of our Republic, elected representation, or laws. That includes no recognition of transboundary borders as well. For them it is a free for all because wildlife and ecosystems don't recognize boundaries.



A prime example of no recognition of laws, the roadmap calls for an EO that directs federal agencies to bring science and people together through these collaboratives. From these collaboratives, create a network and council for policy and projects to integrate conservation and national climate adaptation science. Not by

Fishing Report From Henry's Fork Anglers

By Sam Moody



Box Canyon

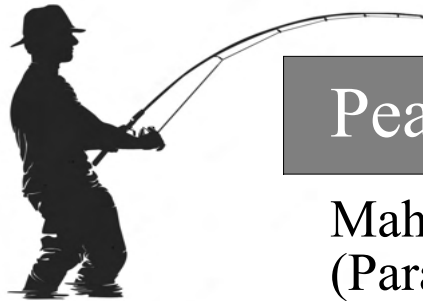
Flows have dropped in the Box to around 600 cfs. While this is low for this year it is at a good water level for the fishing. If you are fishing Box Canyon your best bet is to have a nymph tied on, whether you are dry dropping or nymphing. While fishing I would be focusing on the deep runs and the pocket water where you expect fish to sit. Play around try and find the bottom and when you do judge your depth and keep it there. Some good patterns to use would be a size 12 Black Rubberlegs or a Duracell Nymph. If you want to throw a dry dropper, I recommend a size 10 Raspberry Chubby. If you do want to switch things up especially on these rainy overcast days try throwing a Sparkle Minnow or a Copper Zonker pattern.

Harriman Ranch

Conditions on the ranch have changed over the last few weeks. Fewer hatches and lower water levels are noticeable. It's that time of the year to start stalking up on terrestrials. It's also not the worst idea to sleep in a bit. If you're looking to get an early morning in on the ranch you still could have some luck on rusty and Callibaetis spinners or PMD patterns such as a hackle stacker or a halfback PMD emerger. By the time the late morning hits I would have a terrestrial box locked and loaded. While we think of the ranch as a technical sight fishing dry fly fishery this is the time of year you can get away with throwing a few blind casts with a hopper until you start to see some activity. Patterns to have in your box would be a parachute hopper, green machine hopper, honey ant, and foam beetles. Have it all so when the time comes, and you have your target you will have whole arsenal of bugs to throw at those fish. Remember it is the end of August, these fish have seen a lot of anglers and bugs this year. You really are going to have to start working on getting a good drag free drift and try to put that fly right in front of them. The less space the less time those fish must make the decision whether to eat or not.

Mesa Falls to Ashton

The fishing down below Mesa Falls has been spotty the past couple of weeks. There has not been a great report that has come from Cardiac Canyon but your best chances would be dry dropping or streamer fishing this section. The easier section to float WR-A has been similar. With the warm weather we are seeing there has not been much going on for hatches unless you are on the water early in the morning or late in the evening. If you do choose to go and float this section or fish from either boat ramps you should be dry dropping and nymphing most days and on these stormy overcast days stripping streamers off the bank. While you might think to look for the deep faster moving pockets many of these fish are sitting in the water that is only two feet deep. With the warm temps it requires less work for these fish so look to hit the banks with a dry dropper rig and try to get a long drift. Some good patterns to use would be a raspberry chubby, tan Morrish Hopper or a Water Walker. Under this you could tie on a red zebra midge size 14, olive bullet quill size 16, also a small rubberleg size 12 could work well. This section is especially an area you want to be careful fighting those fish. With it not being directly controlled by a dam this water will be on the warmer side and it is important to be ethical when fighting fish, and as I have said before take your time when releasing fish.



Peak Fly Hatch for September

Mahogany Dun (Paraleptophlebia bicornuta)

Characteristics: Three tails. Dark gray wings with streamlined, dark mahogany bodies.

Timing of Hatches: The most important emergence occurs in late August through early October. Duns emerge during mid morning while spinners fall in the later afternoon to early evening hours.

Habitat: Slow to medium fast gravel bottom water. Mahogany Duns are common on the Harriman Park stretch of the Henry's Fork, the South Fork of the Snake and several other local waters.

Comments: The Mahogany Duns provide some of the finest dry fly fishing of the late summer on the Harriman Park and other waters. They are classified as crawler nymphs. There are a number of other species that emerge throughout the summer but the late season is the best. Emergence takes place at the surface making an emerging nymph pattern very effective when trout are rising.

Patterns: Pheasant Tail Nymph, Mahogany Dun Emerger, Mahogany Dun Parachute, Mahogany Dun Thorax, Slate Tan Nohackle

Hook Sizes: 16 & 18



Suggested Flies



Sawyer's Pheasant Tail Nymph

Cocktail Nymph



Mountain Life Charitable Foundation: A team approach to making Island Park a better place to live



Continued from Page 1

for the Island Park EMS. In July of this year, the Foundation organized Bingo for Your Neighbors with Shotgun Bar as a benefit event for a local Island Park resident facing medical issues. The Foundation collaborated with another local charity to put on Cornhole for a Cause and raised a \$1000 for the charter school. On Labor Day weekend the Team grilled free hot dogs and hamburgers and the Foundation raffled off a Blackstone Grill package to build the charitable fund for Island Park causes. Most recently the team was supporting the Friends of Harriman's annual Wine in the Woods event giving away charcuterie plates.



The fun is just getting started. This fall the Foundation will hold its first annual Festival of Trees at Last Chance Bar and Grill - Truthhunter on November 25th. You can also look forward to this winter's Snowmobile Fun Run. Also, keep an eye out for more Bingo events to for some community engagement this winter. You can be kept in the loop on what the Foundation has planned by following us on Facebook and signing up for the mailing list on the MountainLifeCharity.Org website.



Get Your Tickets!



**Mountain Life
Team @ MLR**



The Mountain Life Team has had a great year launching our new brokerage and starting a charity together to support our local community. Looking forward to more fun and fundraising in the future to bring us all together as neighbors and support our town as it grows. You can keep tabs on what we've got going on or join our mailing list online at: <https://mountainlifecharity.org/>

Upcoming Event: Festival of Tress - November 25 @ Last Chance Bar and Grill - Trouthunter



Patty Laritz-Bithell
Patty@IpIdaho.com
(208) 846-4846



Tina Crow
Tina@IpIdaho.com
(208) 573-8304



Kristen Andelin
Kristen@IpIdaho.com
(208) 360-8850



Lynette Tingey
Lynette@IpIdaho.com
(208) 851-8474



Shawna Fuller
Shawna@IpIdaho.com
(208) 731-3688



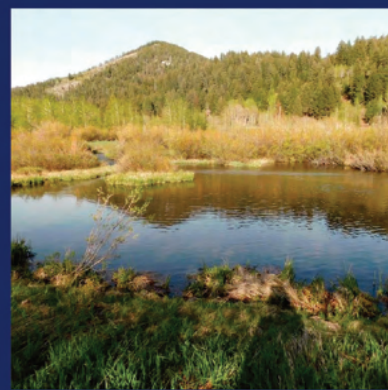
LAKEFRONT

5406 Henrys Lake Road
MLS # 2153024
\$1,195,000



LAST CHANCE

3783 Blue Heron Lane
MLS # 2155644
\$650,000



5+ Acres with a Stream

5219 Hwy 20
MLS # 2154506
\$575,000



Mountain Views

4163 Bowen Arrow Ln
MLS # 2155084
\$550,000



Henry's Lake

5436 Pintail Road
MLS # 2157392
\$1,645,000



GORGEOUS LAKE VIEW

3825 Sage Lane
MLS # 2155154
\$669,000



IP VILLAGE

4207 Centennial Drive
MLS # 2155826
\$799,000



GORGEOUS VIEWS

3337 Eagles View Road
MLS # 2153126
\$215,000

IpIdaho.com



Looking to buy or sell?

Contact The Mountain Life Team
GoTeam@IpIdaho.com
(208) 534-6775





**SAWTELLE
PROPERTY
MANAGEMENT**

Your Premier Short-Term Property
Management Solution
Island Park, Idaho

Let us help you get the most out of your
short term rental property!

208.313.1701 or E-mail Tyler@sawtellepropertymanagement.com



ASAP SEPTIC PUMPING
208-390-7559

ASAP SEPTIC PUMPING
208-390-7559

Full time Septic Pumping In Island Park
Tank Locating, Digging and Inspection
for STR and Real Estate Sales Inspection
24 Hour Emergency Services
LOOK FOR THE BIG RED TRUCK
Asapumping.com

Open Year Round

Restaurant
Lunch 11am-5pm
Dinner 5pm-9pm

Tavern
Full Bar w/ Patio Seating
Pool Table
Shuffle Board

Lodging
Cabins
Motel Rooms
Campground

C-Store
Cold Beverages
Clothing
BBQ Supplies
Gifts
Miller Ranch Beef

Lakeside Rentals
9am-5pm

Reserve your rental online today!



208-558-9770



UPCOMING EVENTS

Oct. 13th- Lodge Closed for Private Event

Oct 28th- Halloween Costume Party
with Perfect Chaos 7pm

Dec 1st & 2nd – Unknown Band 7pm

Dec 2nd- Lighting of the Lodge

Dec 9th – Sweet Nickole 7pm

Dec 23rd – Ugly Sweater Party

Dec 23rd- Perfect Chaos 7pm

Dec 25th- Closed for Christmas

Dec 31st- New Years Eve Party

**We Proudly Serve
Idaho Grown
Miller Ranch Beef**




SEA-DOO |  can-am |  ski-doo

www.lakesidelodgeandresort.com





Motorcycles, History, and Site Seeing

By Tom Bithell

Growing up in Idaho I have really enjoyed all the remote country we have. I have explored Idaho from day one with my grandfather and dad. Looking for arrowheads exploring old mines, ghost towns and exploring our great state. We also loved riding motorcycles and they are a great vehicle to explore remote, rugged Idaho.

Idaho has many backcountry roads and byways and history lessons to be learned from them. Today I will tell about one of my favorites around Island Park. The journey from Salmon Idaho to Island Park. The route of travel we took was the Lewis and Clark route over into Idaho across the Lemhi Pass to see great sites and learn the history.



We set out from Salmon, Idaho. Our first stop had to be Sacagawea's birthplace, near Tendoy Idaho. Then up and over Lemhi Pass where Lewis and Clark first saw Idaho and a "sea of mountains" before them. This is where Lewis and Clark realized there was no easy river over the pass to the Pacific Ocean.

There are many historical signs on Lemhi Pass and one stated that this creek was the furthest tributary of the Missouri River. I thought that was legitimate until one of my local friends told me that since it's they discovered that creek, Hell Roaring Creek that starts by Mount Jefferson in Island Park, and flows into Montana, eventually dumping into the Missouri River, was determined to be the furthest tributary.

We set out from Salmon, Idaho. Our first stop had to be Sacagawea's birthplace, near Tendoy Idaho. Then up and over Lemhi Pass where Lewis and Clark first saw Idaho and a "sea of mountains" before them. This is where Lewis and Clark realized there was no easy river over the pass to the Pacific Ocean.

There are many historical signs on Lemhi Pass and one stated that this creek was the furthest tributary of the Missouri River. I thought that was legitimate until one of my local friends told me that since they discovered that creek, Hell Roaring Creek that starts by Mount Jefferson in Island Park, and flows into Montana, eventually dumping into the Missouri River, was determined to be the furthest tributary.



There are many historical signs on Lemhi Pass and one stated that this creek was the furthest tributary of the Missouri River. I thought that was legitimate until one of my local friends told me that since it's they discovered that creek, Hell Roaring Creek that starts by Mount Jefferson in Island Park, and flows into Montana, eventually dumping into the Missouri River, was determined to be the furthest tributary.

From historic Lemhi High Pass we dropped down in to Montana and headed for Bannock, a well preserved mining Ghost Town. After a too short, two hour visit we had to keep moving to get to Island Park before nightfall and an imminent rain storm coming.



Onto Dillon, Montana we went to get gas before for the 120 miles of no service or civilization between Dillon and Island Park. We headed out of Dillon down Blacktail Road into the Big Country in-between, being chased by the storm moving in. Nothing but open range and cows out there.

It was a long ways before we finally got into the muddy Red Rock Lakes Valley where rain had recently been. By then it had been a long ride, but we were racing sundown and more rain.

The Pete Creek Trail across the Centennial Range back into Idaho - my favorite remote border crossing - was the fastest way. Still, once back in Idaho, it's another 15 odd miles to Kilgore and then 20 plus more home.

Fortunately the Idaho side was dry and we could made better time. It took another hour plus to get back to Island Park, but we made it at dusk with 178 miles on the odometer.

What an adventure it was.



Caldera Custom Docks
ISLAND PARK, IDAHO

DOCK SALES/SERVICE/MAINTENANCE

208-313-2858
Calderacustomdocks.com
FEATURING Wave Armor PRODUCTS

OUTBACK REALTY 208.558.9500

Jamie Phillips Broker (208) 221 2647	Jackie Jensen Realtor (208) 390 8303	Riley Hoyle Realtor (208) 351 6705	Monika Boyce Realtor (208) 240-2717	Gay Johnson Realtor (208) 351 5204	Gary Dawson Realtor (208) 351 3054

 REDUCED!!		 <i>Brand new</i>	
Robbins Sub \$998,000 5 bed / 3 bath / 1/2 Acre Garage & Shop	Shotgun - \$547,000 2 beds / 1 bath / Rental Completely Remodeled	Last Chance - 5 units Each offer 2 bed / 1 bath Prices starting at \$479K	Aspen Ridge - \$695,000 3 level / 3 beds / 1.5 bath Garage / She Shed / Trees
Shotgun \$899,000 6 bed / 4 baths / 1.93Ac 2 Kitchens. Great Rental	Harris H.S. \$625,000 4 bed / 1 bath / .48 Ac Great Rental	Ralph T.- \$495,000 3 bed / 1 bath / 1/2 Ac Rental potential - Garage	Shotgun \$585,000 2 bed / 2 bath / 3 lots RV spot / Large shop
Southshore \$799,900 Waterfront with boat dock 1.45 Acres / Road on lot	Huckleberry - \$995,000 3 bed / 2 bath / 3.17 Acres NO HOA / VIEWS!!	Yale Creek \$349,000 Tiny home / 2 RV hookups .83 Ac / Large trees	Commercial! \$1.2M 1.7 Acres Boondocks Restaurant
Yellowstone Acres 3 bed / 2 bath / Extra lot AMAZING VIEWS!!	Macks Inn \$549,900 2 bed / 2 bath / 1/2 acre 2 sheds / oversized garage	The Repair Shop Commercial Property .95 ac / \$2,300,000	Gravel Pit \$750,000 Commercial Property 4.38 Acres
Stonegate \$299,900 3.51 ac building lot Great year round access	The Woods \$279,000 3.04 ac building lot Heavily Treed	Eagles View \$169,900 Views all around 2.25 Acres	Fisher Pointe - \$250,000 5.35 Acres Great Views!

Events this Month

Sept 24 National Park Service Free Admission
Visit any National Park for free today!



Order your costume for the upcoming Halloween party at Lakeside Lodge on Oct 28th!



Oct 7
4-6 pm
Oktoberfest
EMS Fundraiser
At the EMS building
Support our Local EMS

Oct 14th
Island Park
Historical Society
4 pm
EMS Building



September 22nd
Povah Community Center
West Yellowstone
Halloween Craft Night

ISAAC WALKER
OWNER

CALL OR TEXT FOR A QUOTE

208.243.0049

CLEARDIAMONDWINDOWS21@GMAIL.COM

CLEAR DIAMOND
WINDOW CLEANING

I SAW THAT

CUSTOM CHAINSAW CARVING
TREE REMOVAL
MISC. CABIN REPAIR

AL PARKS
CALL/TEXT FOR FREE ESTIMATE
208-200-9404

Electric

208-351-7058

Electrical Contractor
Serving all of Southeast Idaho

Silent Paw Mobile Dog Spa Dog grooming delivered!

Continued from page 4

Once more, life threw difficulties her way, and as couples sometimes do, they split for a short time. Her husband moved back to Idaho, and through many conversations, they decided to give another go, and she joined him in Idaho. She found a job at an assisted living facility, and, once again, took up grooming at Teton Kennels. When Covid showed up, she could no longer do both jobs, the assisted living facility required that she work only for them during the pandemic, so once more, she gave up grooming.

Before

After



On Dec 17, 2020, their first child was born, a boy, and going back to work full time with an infant was difficult, so she found a retired couple looking for help as ranch hand, and although she loved that job, dog grooming was still calling out to her. So, she began making house calls to just trim nails. By November of 2021, word was out, and she was in demand! In January, she could afford to purchase a dryer, and could then offer full-service grooming and she has never looked back.

In April of 2023, a baby sister joined the mix. Both litters tag along for the appointments, and Heather is definitely in her element. She loves the connections she makes with both the dogs and their owners. Being in the home where the dog is most comfortable definitely has its benefits, she can discuss issues, or future needs, and address them promptly and correctly. She loves the larger breeds that other groomers may shy away from and has found her specialty with double coated breeds, although all sizes and shapes are welcome!



When you call her, she will need a 4x4 space, power, and a space to bathe your pup. She brings all her own equipment and is sure to clean up after! She's busiest from March to Aug, so be sure to schedule early. She services Island Park, Ashton, Saint Anthony, Chester, Rexburg, Driggs, Victor, and all areas all the way to Firth. Make a call, 406-860-2812, let her bring the spa to your furry friend!



A Vacation from Arkansas Turns a Family Dream into a Reality

By Robie Harvey

In 2018, while on vacation here in Island Park with our youngest son and my husband, Nathaniel and Troy, I found a beautiful piece of land and was surprised to find that we could afford to make a lifelong dream come true. While on a 10 day vacation, we purchased this property, then went home and told our family our big plan of living in Island Park, Idaho, six months a year and creating our livelihood, which would not be terribly different from the way we made our income in Arkansas.

We have built homes for a living for 31 years, all of our children are grown and our youngest son, Nathaniel Harvey created his own business here a few years ago when he became a licensed contractor and started staining and painting cabins for clients here in Island Park.

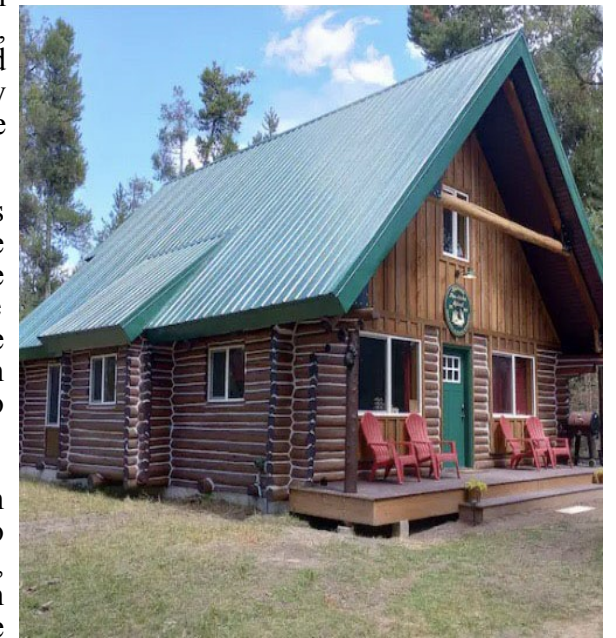


We worked hard and built our own home and then renovated two cabins, just so that we would have the residual income from renting our cabins to vacationers as we did once ourselves. It's expensive here, and we wanted to ensure we could make it. Now both of our sons, Nathaniel and Samuel, often work together, staining cabins and creating a new life of their own here, and, our daughter-in-law, Allyson, even worked at Connies this summer and enjoyed it so much here that she and my son purchased land to build their own home next year.



We maintain and manage our 3 cabins ourselves, and enjoy meeting the fine people that come through to enjoy the beautiful landscape that God created. We take our job very seriously as we used to be in the long-term rental business in Arkansas until we sold those homes to make this new dream happen.

This one decision on a vacation back in 2018 has improved our quality of life so much, in the way that we work and live, We found a wonderful church here in Island Park to attend, we have made



amazing friends, and we no longer have to suffer through the southern heat of summer, all while enjoying the beauty.

We strive to be good stewards of the land, be an asset to our community, and treat our guest as we would want to be treated when we are on vacation. it is our joy to be doing this in this time of our life, and we have not regretted making this decision. Island Park is for anyone who loves nature and wishes to live in a veritable paradise.

Centennial Excavation

Shilo Owens Jami Owens
208-589-8313 208-589-6893

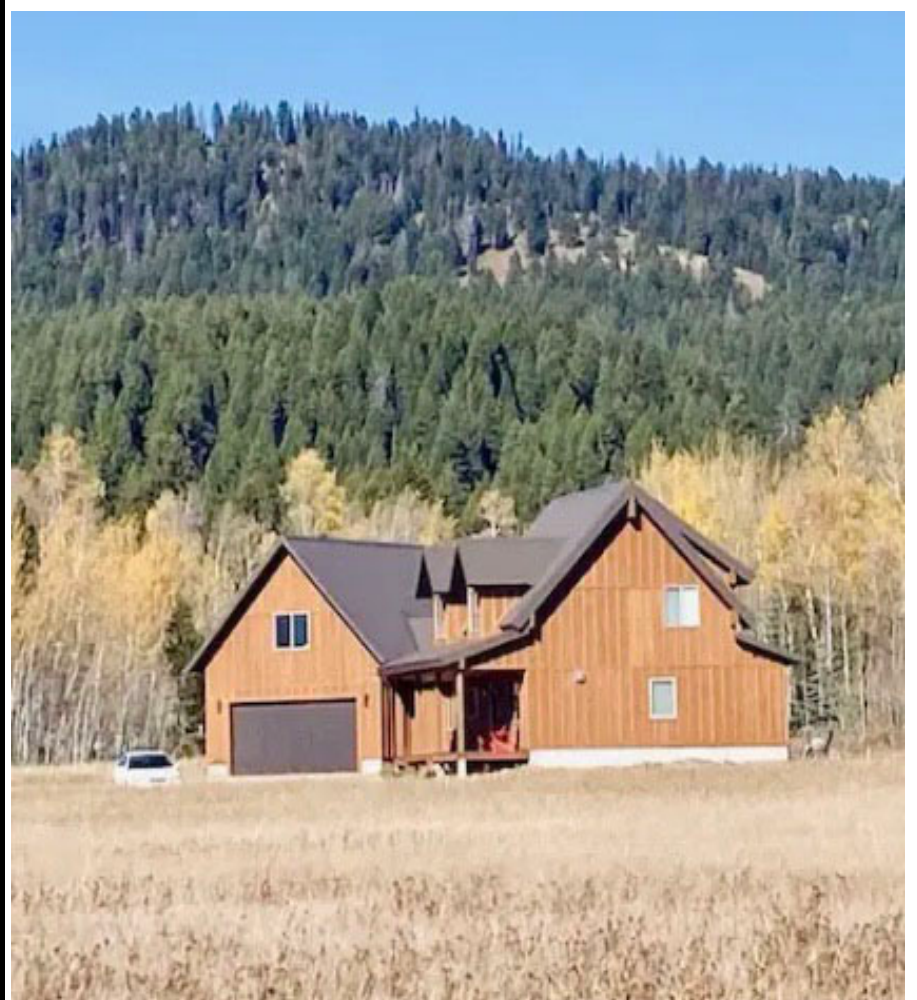
WedigIdaho@hotmail.com
www.WeDigIslandPark.com

LIC # RCT-1774



Excavation • Road Building • Lot Clearing • Complex/Standard Septics
Utility Trenching and Installation • Demolition • Gravel

WE DIG IDAHO



Shadow Woods Lots



Shadow Woods subdivision is a gated community with all season access. These easy access building lots have magnificent views of Mt Sawtell and frequent wild life sightings such as elk, moose and deer. Wild flowers abound and old forest timber bring the smells of nature to your future cabin. Mature trees and exposed building envelopes make for an early start on a spring build. In addition to wildlife viewing, a fishing enthusiast will love the 6 minute access to Henrys lake, 15 minute access to Hebgin lake and 25 minutes to the Madison river or West Yellowstone national park. Mountain bike or take the ATV trails to the nearby golf course or grocery store. Close to restaurants and gas this is an ideal location to build your mountain retreat. Short term rentals are allowed. Come pick your lot!



Ice House Creek Subdivision Heavily treed 5.99 acre lot that borders public land. Great building lot with winter access and strong covenants to protect your investment. Short term rentals are allowed should you want exercise that option. Privacy and easy access. Property is level ground with deer, elk and moose frequenting the property. Island Park reservoir is within 7 miles. ATV and snowmobile trails connect to 300 miles of trail. Come fish, hunt and play in a forested playground. \$299,000 MLS #2154736

Shadow woods Subdivision is a gated community with all season access. Magnificent views of Mt Sawtell and frequent wild life. Wild flowers and old forest timber bring the smells of nature to your future cabin. A fishing enthusiast will love the 6 min access to Henrys lake, 15 min access to Hebgin lake and 25 min to the Madison river or West Yellowstone National Park. Mountain bike or take the ATV trails to the nearby golf course or grocery store. This an ideal location to build your mountain retreat. Short term rentals are allowed. \$390,000 MLS #2152864



4226 Deer Crest Drive \$1,500,000

This ready to occupy Custom 4 bedroom, 4 bathroom home is in a gated community. A quality build that looks and smells new. Circular sawn hickory floors. Hickory cabinets and slate tile in kitchen. Granite countertops throughout the home. Stainless steal appliances. Carpet in all four bedrooms as



Well as upper and lower family gathering areas. Home is all year access with a forced air heater and on demand hot water. Hand carved bears on beams in great room. 1.83 treed lot. Oversized 896 sq heated garage. Trex deck and covered entry. Private well and city sewer, 1000 gal Propane tank is buried and owned. Home comes with most furnishings and the John Deer snowblower in the garage is included. Owner will carry a loan for up to 10 years with 30% down. Just 10 minutes from gas, groceries and golf, 10 minutes from Henrys lake, 15 min from Hebgen Lake and 20 min from West Yellowstone. A perfect location to play and enjoy.



Clint Farmer

435-770-3971

Clint@Rainbw.com

Honesty and Integrity. Two things you should consider when looking for a real estate professional. For 18 years I have served the Island Park area as a real estate professional being honest, hardworking and maintaining my personal values. As a result, I have enjoyed many repeat customers.

As an expert in property evaluation I can get your property priced and sold at a great return. As a buyers' agent, I can advise on the quality of the investment property and potential for earned equity.

Call today for a free property valuation!

Rainbow Real Estate

Island Park EMS Fundraiser Oktoberfest

Continued from Page 1

To start with, there will be a chili cook off! Anyone, bring your best chili recipe, in a crockpot to keep it warm, and enough to feed at least 10, and arrive around 3:30pm. Contact the EMS on the Friends of Island Park EMS to register to participate. Taylor and a few others will be judging the event, beginning at 4:30pm, and will award a 1st, 2nd, and 3rd prize, plus all the bragging rights you want!

Joel Fryer donated boxes of pumpkins, in all colors and sizes, for a kids pumpkin painting and The Island Park Charter school will have some fun for the littles that attend. There will be a live band, Rockin A Team out of Roberts playing, I hear they are an amazing country band that is fun to dance to. There will also be home made root beer and non-alcoholic apple beer for tasting. Besides chili, there will be a brat, cornbread and dessert provided for \$15/person for the meal. There will be a family meal bundle for \$50 that will include everyone in your family.



And, the fundraising will be via a Raffle that begins at 6 pm. Tickets are online via the Facebook page, you can then Venmo for payment, Café Sabor also selling tickets, as is the Sinclair station at Macks Inn, Sam Patch Co, or reach out to FriendsOfIslandParkEMS@gmail.com. Tickets are \$5 each, and you won't want to miss out on the prizes! There is a 50/50 Raffle, and 13 baskets filled by local vendors that include the following: A Wellness Basket, Cleaning Basket, Kids Basket, Winter Fun Basket, Bidet Basket, Off-Road Clean Basket, Bathroom Basket, Stay 'N Play Basket, Fishing Basket,

Country Basket, Local Artists Basket, Movie Basket and a Taste of Island Park Basket. There will be draw baskets for each item and people can select which basket they would like to put their ticket in for drawing.

They are super excited about this event and would like to see all of Island Park come out! You don't need to be local, and you don't need to be present to win in the raffle, however, why would you miss this? We all rely on this amazing crew; they are small and all volunteer.

The event will be held from 4 pm to 7 pm at the EMS shed, 4378 County Circle, (also known as Old Library Road) in Island Park, near Macks Inn. Come out and show them our support, they could be the difference between life and death for any one of us.



**411 NORTH
2300 EAST
ST. ANTHONY,
IDAHO 83445**

The Door Man

FOR ALL YOUR GARAGE DOOR NEEDS

208-624-3657



CALL OR EMAIL TODAY
service@idahodoorman.com

ORDER A DOOR FROM NOW TIL END OF 2023, MENTION PROMO CODE "DOORMAN23" AND BE ENTERED FOR A CHANCE TO WIN A PRIZE RANGING FROM

FREE DOOR TUNE UP,
\$50- \$100 GIFT CARDS,
RESIDENTIAL OPERATOR,
RTIC COOLER,
AND MANY OTHER COOL PRIZES

**USE TELEPHONE NUMBER
(208) 252-5881**

BOOK A SERVICE FROM NOW TIL END OF SEPTEMBER, MENTION PROMO CODE "PIONEER23" AND RECEIVE 10% OFF TOTAL INVOICE

OUR SERVICES

- ✓ Preventative Maintenance
- ✓ Broken Spring Repair
- ✓ Broken Cable Repair
- ✓ Door Off Track Repair
- ✓ Panel Replacement
- ✓ Garage Door Opener Repair

**USE TELEPHONE NUMBER
(208) 252-5881**

DRAWING WILL BE HELD ON JANUARY 2ND VIA FACEBOOK LIVE.

 FOLLOW US ON FACEBOOK @THE DOOR MAN



The Water That Supports Us: Island Park Reservoir

Continued from page 3

25,000-acre feet, which is 18.5%. Prior to 1994 when the plant was installed, fish moved freely through the outlet during low years, but a screen that was installed now prevents fish from exiting the lake during drawdowns. When the reservoir is drafted to the river channel, there are always concerns about the fishing habitat downstream due to the sediment that may be deposited. These events make the river unfishable due to the high stream flow for irrigation. Because of the fires in Yellowstone, the 1992 event was much more catastrophic for those habitats than the 1979 event, much of the burned area had unstable soils and there was an estimated 90,000 tons of sediment transferred because of this. These kinds of events also produce dead fish, fowl water, and can create quite a stench.

Today, we all enjoy the benefits provided by this body of water, but in 1939 as the last-minute details were installed, like the water gage, and the reservoir began filling, there were many that were saddened as their ranches and homes were consumed. There are still remainders of some of these, such as the Trude Dam that are underwater and can be dangerous obstacles as the water level lowers near the end of summer. Our beautiful lake contains mostly trout and kokanee, including Rainbow and Rainbow/Cutthroat hybrids. Brook trout and whitefish are also present, and Lahontan cutthroat have been stocked to take advantage of the abundant prey and provide a future trophy fishery.

So, as I enjoy the lake, now and in the future, remembering those that gave up their homes, and the amazing history that came with it will now be forefront in my thoughts. I hope I also provided an explanation for why draw downs happen and that recreating on the lake is not the most important value of the water stored, but just a side benefit of the storage system that is vital for the valley below us.

Preserving History The Island Park Historical Society

Island Park is steeped with history, and so many past and present residents have worked hard to ensure there was a collection of documents and stories for prosperity. Sue McKenna is one of those residents. She moved here in the 70's and worked for the forest service during the summer months. She recalls that it was 30 years ago she joined the Island Park Historical Society, which was founded in 1982, and has been involved since.

For the last 15 years, the board and members have been trying to find spot to open an office and archives as a base for the operation, but thus far have been unsuccessful. The bequeathed funds from Henry and Rose Kopfinger have remained in the bank, rather than being put to good use, and now, as real estate prices soar, they are unsure if anything will be located.



The archives and documents had been stored in the upstairs of Café Sabor for many years. When the restaurant remodeled a couple of years ago, they were forced to find a new location. A storage unit near West Yellowstone now houses the material in plastic boxes, making them difficult to access.

In days past, the Society had hosted speakers and yearly get togethers. And then Covid hit, and things fell apart. Their membership dwindled to 4 or 5, and many of their members passed, sadly. There were no meetings, no annual events.

They are looking to change that! Voting in new board members and increasing the membership is at the top of the list. In order to do this, they will be hosting a working meeting on October 14th at 4 pm in the EMS building on Old Library Road to vote in a new board. Anyone wishing to participate is welcome to attend.

They would also welcome any and all new members to join, an individual membership fee is only \$25 annually, a family membership is \$35 and a business membership is \$50 each year. If you would like to simply donate funds to help this worthy cause, you can do so at any time, just reach out to them on the Facebook site, Island Park Idaho Historical Society, to make arrangements.



DAD'S CONSTRUCTION AND SERVICES

208-932-3152 OR 208-380-4967

- Trash Service Weekly pick up Bear proof containers
- Dumpster rental 7 x 14 x 4 Bins \$200/wk + \$100/delivery + dump fee
- Equipment rental Forklift \$210/day call for discounted long term pricing



Restaurant

Lunch 11am-5pm
Dinner 5pm-9pm

Tavern

Full Bar w/ Patio Seating
Pool Table
Shuffle Board



We Proudly Serve Idaho
Grown
Miller Ranch Beef



**Lakeside
Lodge**



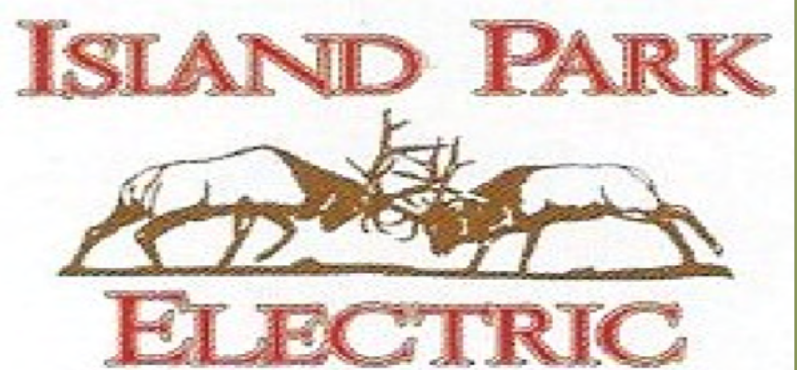
208-569-4763

Let Solar Scrub keep your solar panels
clean & producing optimal power
generation all year long.

We also do exterior cleaning of
businesses and homes.

Serving all of Southeast Idaho

Call us for a Free Quote



**4108 S Big Springs Road
Macks Inn, Idaho 83433**

Come Live the Mountain Life!



IpIdaho.com



Patty Laritz-Bithell | Patty@IpIdaho.com | (208) 860-4846



RENTAL INCOME - Commercial

3519 Yale Kilgore
MLS # 2157469
\$1,250,000



4 active nightly rentals - 5+ Acres - Commercial

3555 Yale Kilgore
MLS # 2156139
\$2,000,000



SHOTGUN AREA

3994 Dirk Drive
MLS # 2142308
\$159,900



CREEK ON LOT

4119 Pine Crest Drive
MLS # 2155933
\$430,000



MACK'S INN

4266 Gooding Street
MLS # 2153381
\$1,500,000



Active Nightly Rental

3549 Old Shotgun Rd
MLS # 2155182
\$699,900

LIST RIGHT

I prepare a strong value proposition for potential buyers. We get the cabin in the right condition to list at the right price, then highlight your home's attributes with professional photography, drone footage, and/or 3D tours as appropriate to the market.

BUYER PREPARATION

MARKET READY

- Get your financing in order and be market ready with a pre-approval letter
- Stay on top of new listings so you hear about the right property before its gone
- Keep ready to hit the ground running and compete with high market activity

NEEDS AND WANTS

- Dial into what you are looking for in a property and location.
- Delineate between what is essential and what is negotiable
- Align expectations with your budget and market availability

TRANSACTION MANAGEMENT

- Draft and submit offers quickly to avoid missing out
- Negotiate for the best deal
- Stay on top of deadlines and submissions to keep the deal flowing
- Coordinate with transaction participants to adjust to changing circumstances and keep the deal alive