



Precast Blocks

Precasting performed by:

Conigliaro Block, Inc. in Framingham, MA

Redi-mixed concrete supplied by:

Conigliaro Block or Tresca Brothers or Dauphinais Concrete

Mix Design:

Blocks may be precast using any of the following mixes –

Standard Concrete - 2000, 3000, 4000, 5000 psi

State Mix Concrete - 3000, 4000, 5000 psi

Plas-Crete (contains recycled plastic aggregate rather than stone)

Dust-Crete (contains recycled polishing dusts)

Agg-Crete (contains recycled concrete, brick, porcelain, glass, other aggregates/dusts)

Econo-Mix (contains some or all of the above, lower cost, lower psi mix)

Block Dimensions:

Precast blocks are available in Standard and Jumbo product lines per drawings on the following pages

Other Considerations:

Full or half cap, full or half radius, angle, designer face finishes, special length as well as other variations of both our standard or jumbo blocks are available

to fulfill specific project requirements. Call Conigliaro Block for more details.

Please note: the dimensions presented by Conigliaro Block provide theoretical length, height and depth dimensions for our various block products. The final actual cured block dimensions are subject to variations, in the range of plus or minus ¼” in any direction, due to a number of factors, including:

Concrete mix design

Concrete curing

Ambient temperature during block production

Use of heat and/or chemical accelerants

Slump of the concrete

Form dimensional variations due to manufacturing tolerances and/or deflection

Other unforeseen factors

Depth dimensions also differ from theoretical if rough stone, cut stone or other designer face finishes are applied to the face of the blocks. Call Conigliaro Block for further dimensional information if you plan to order blocks with designer face finishes.

The male and female knob dimensions are the same on all blocks, including all blocks within the standard and jumbo lines of blocks.

Questions about this specification may be addressed to:



701 Waverly Street, Framingham, MA 01702

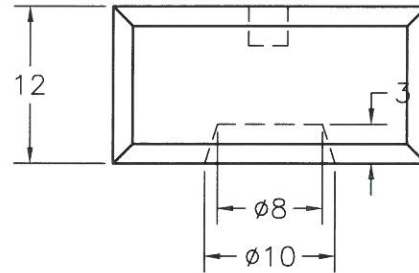
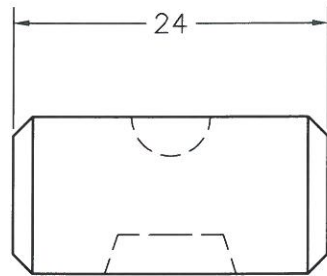
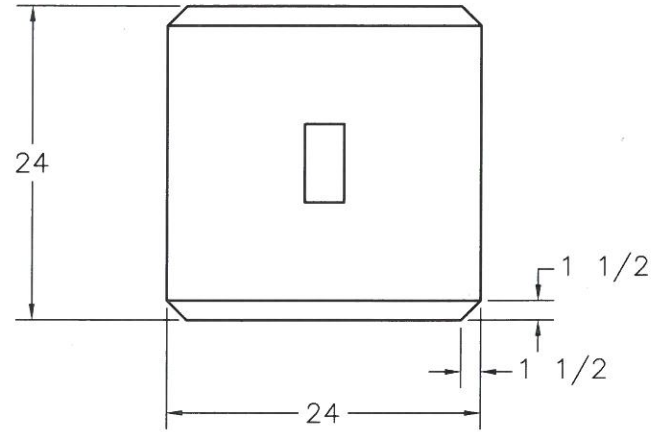
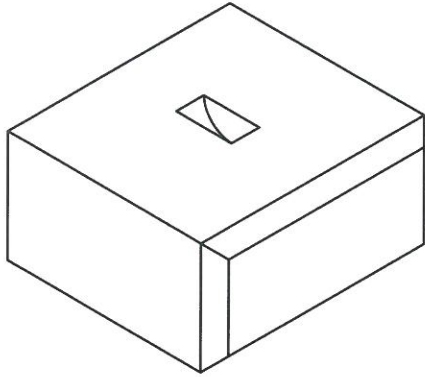
(888) 266-4425, (508) 872-9668

fax (508) 653-6672

email: sales@conigliaroblock.com

website: www.conigliaroblock.com

V02152022



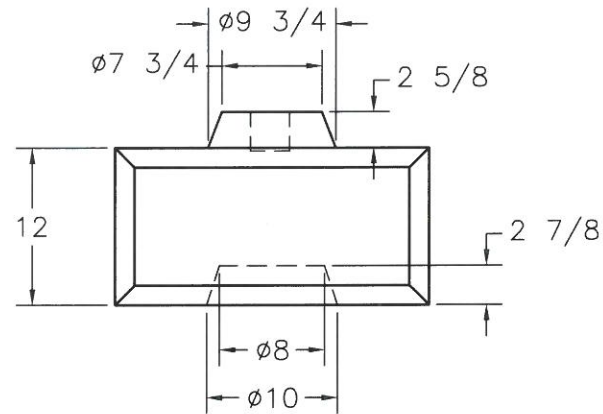
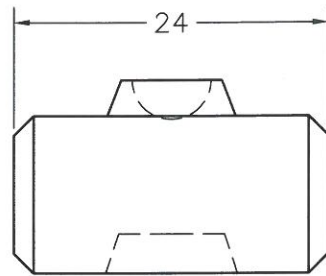
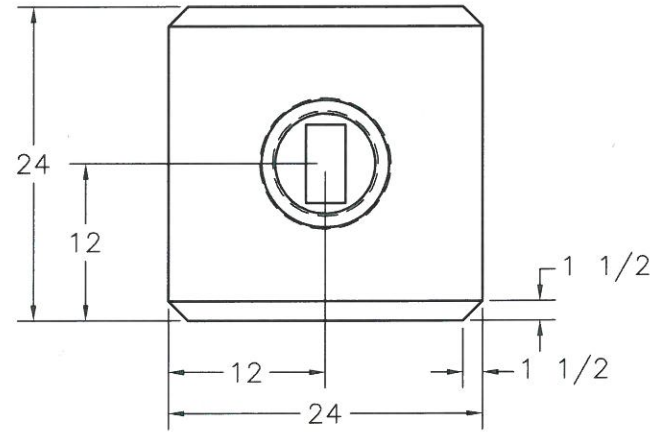
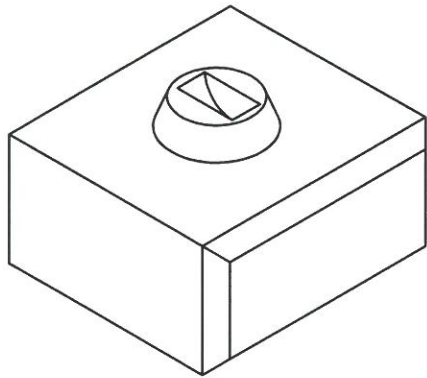
12" x 24" x 24" Flat Top Block
with Beveled Edges



701 Waverly Street, Framingham, MA 01702

(888) 266- 4425, fax 508-653-6672

sales@conigliaroblock.com www.conigliaroblock.com



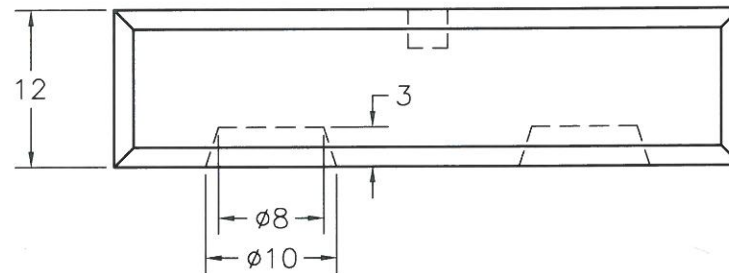
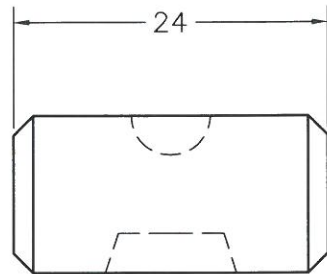
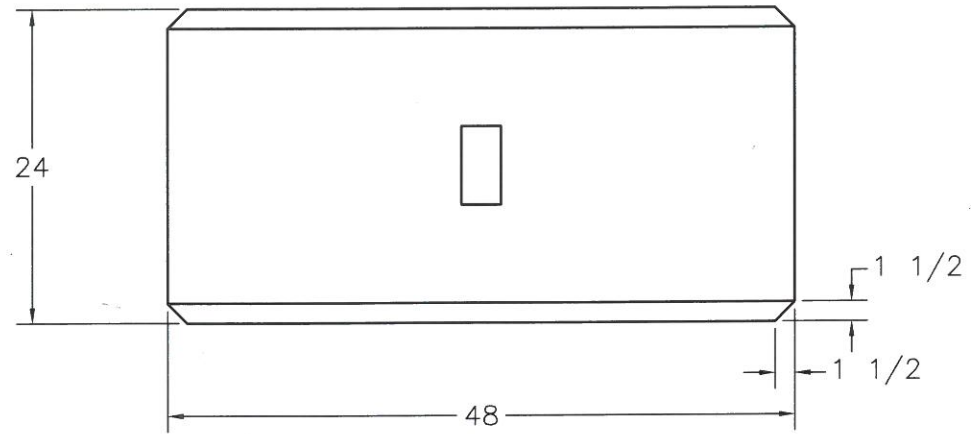
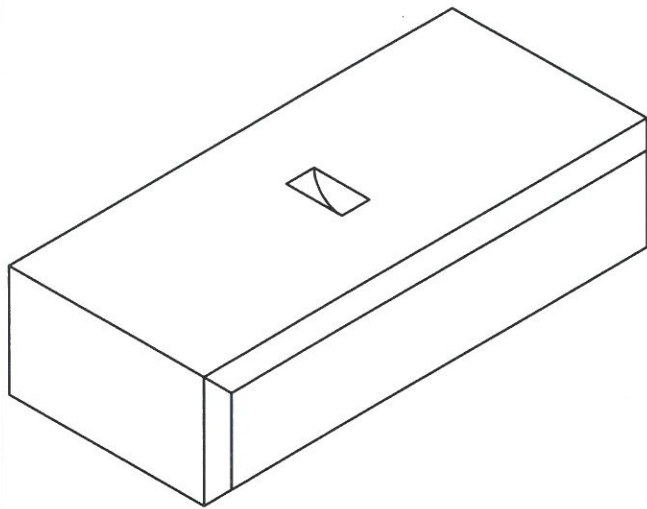
12" x 24" x 24" Knob Block
with Beveled Edges



701 Waverly Street, Framingham, MA 01702

(888) 266-4425, fax 508-653-6672

sales@conigliaroblock.com www.conigliaroblock.com



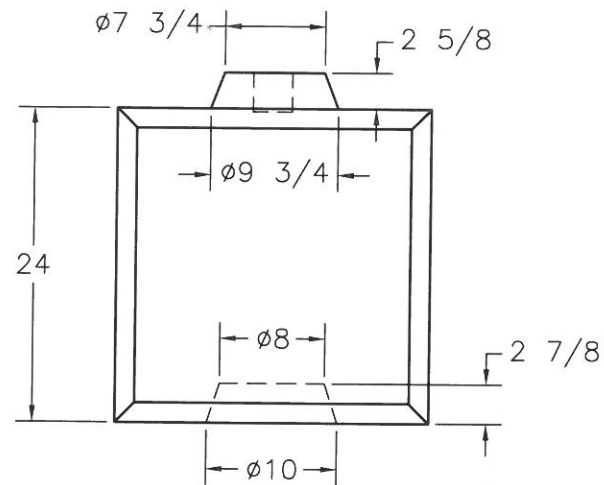
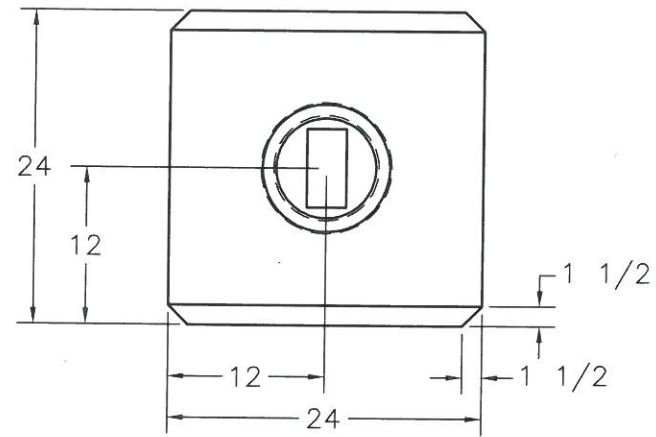
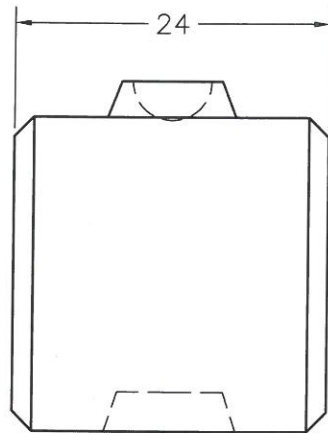
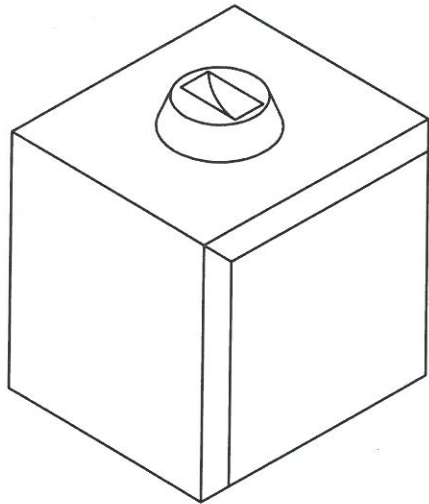
12" x 24" x 48" Flat Top Block
with Beveled Edges



701 Waverly Street, Framingham, MA 01702

(888) 266- 4425, fax 508-653-6672

sales@conigliaroblock.com www.conigliaroblock.com



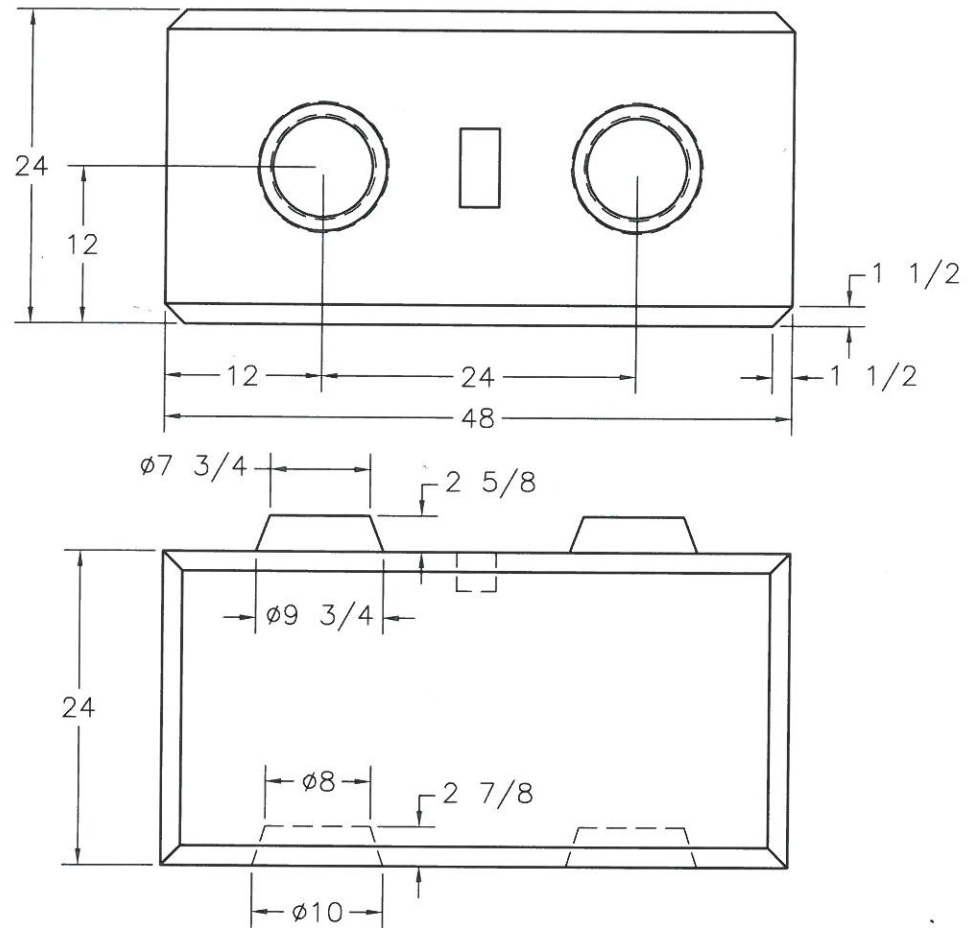
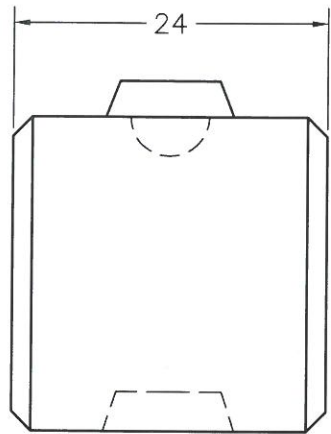
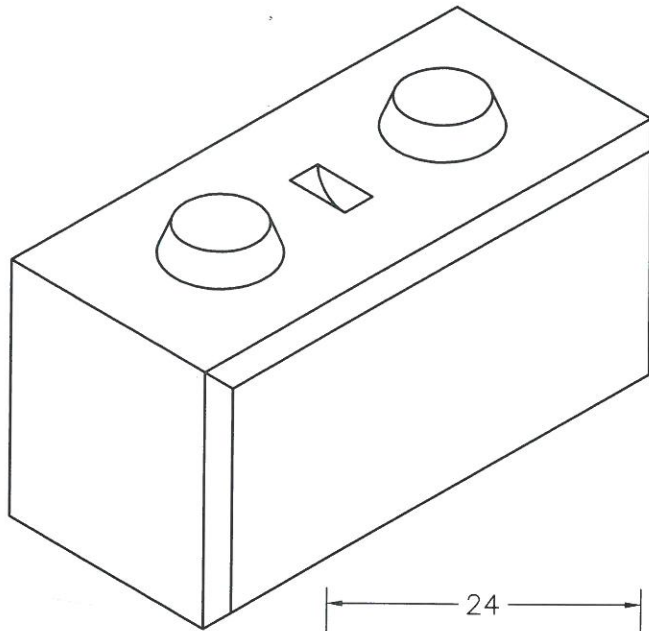
24" x 24" x 24" Half Knob Block
with Beveled Edges



701 Waverly Street, Framingham, MA 01702

(888) 266- 4425, fax 508-653-6672

sales@conigliaroblock.com www.conigliaroblock.com



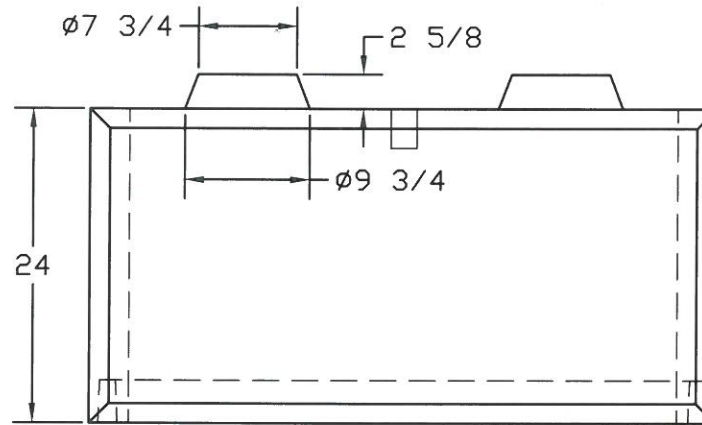
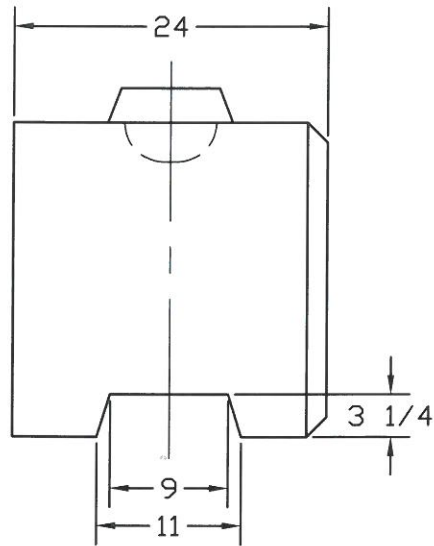
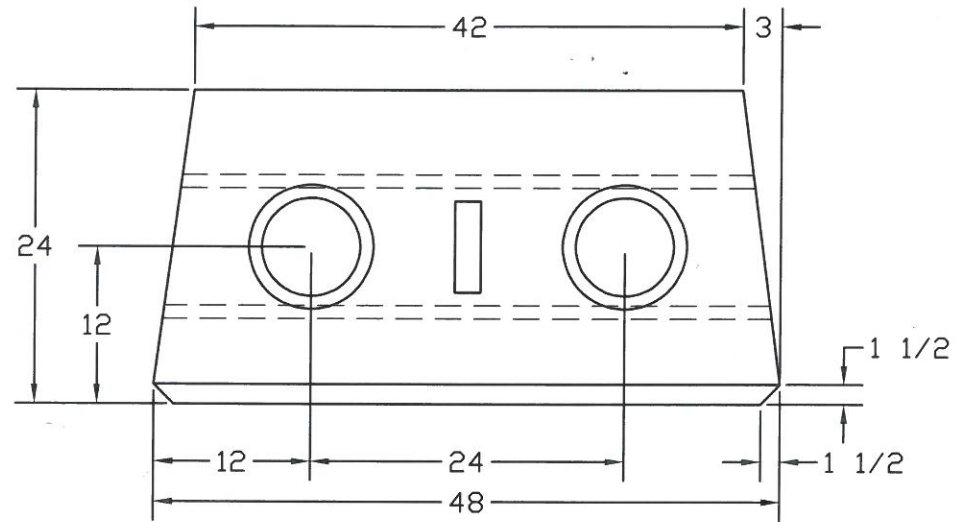
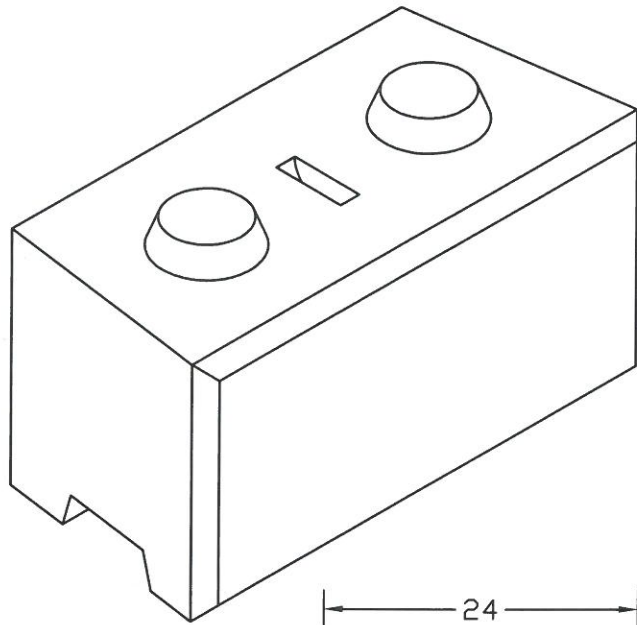
24" x 24" x 48" Knob Block
with Beveled Edges



701 Waverly Street, Framingham, MA 01702

(888) 266- 4425, fax 508-653-6672

sales@conigliaroblock.com www.conigliaroblock.com



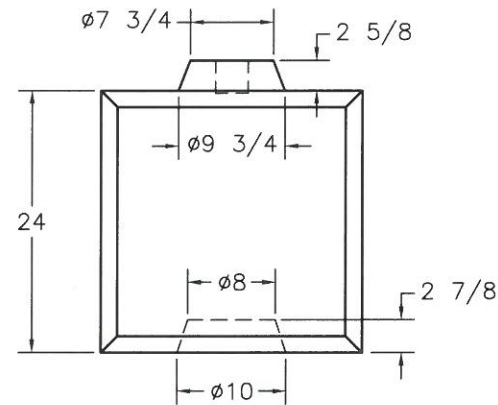
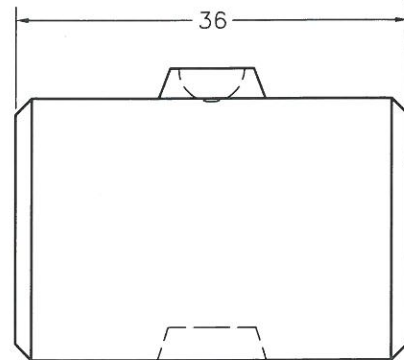
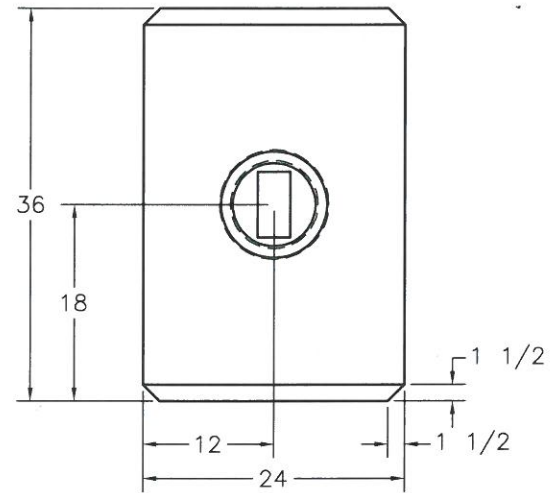
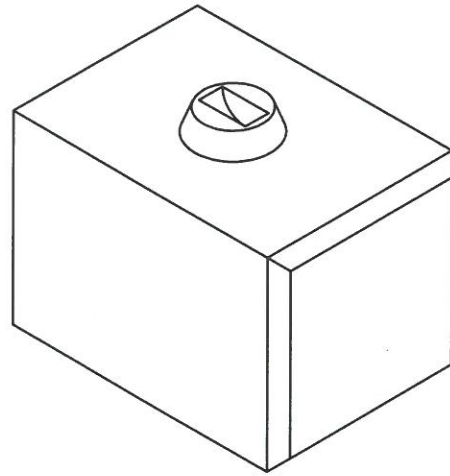
24" x 24" x 48" Knob Radius
Block with Beveled Edges



701 Waverly Street, Framingham, MA 01702

(888) 266-4425, fax 508-653-6672

sales@conigliaroblock.com www.conigliaroblock.com



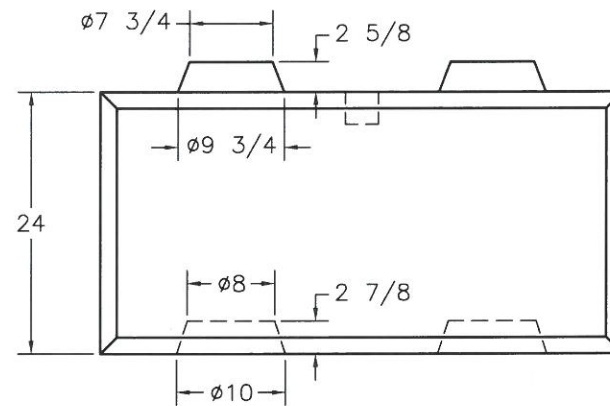
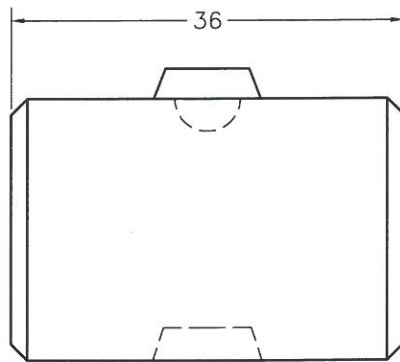
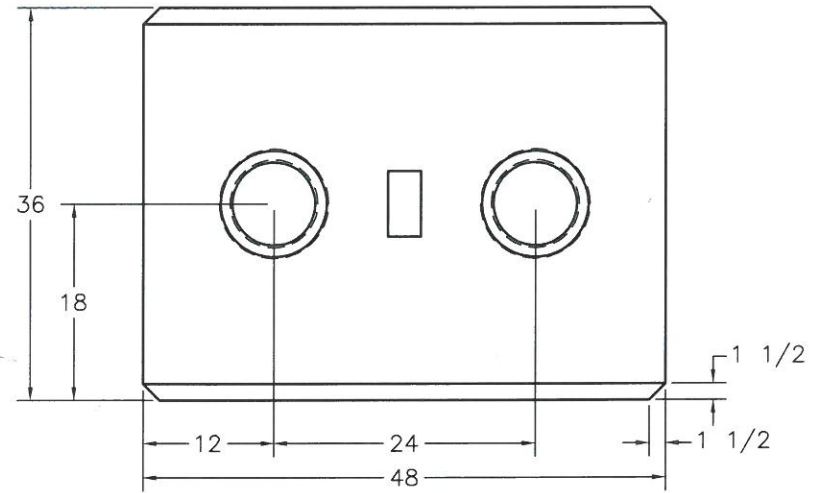
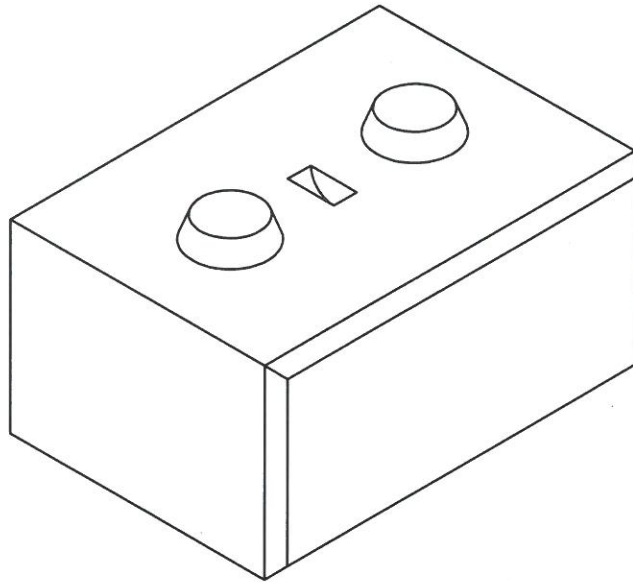
24" x 36" x 24" Jumbo Half Knob
Block with Beveled Edges



701 Waverly Street, Framingham, MA 01702

(888) 266- 4425, fax 508-653-6672

sales@conigliaroblock.com www.conigliaroblock.com



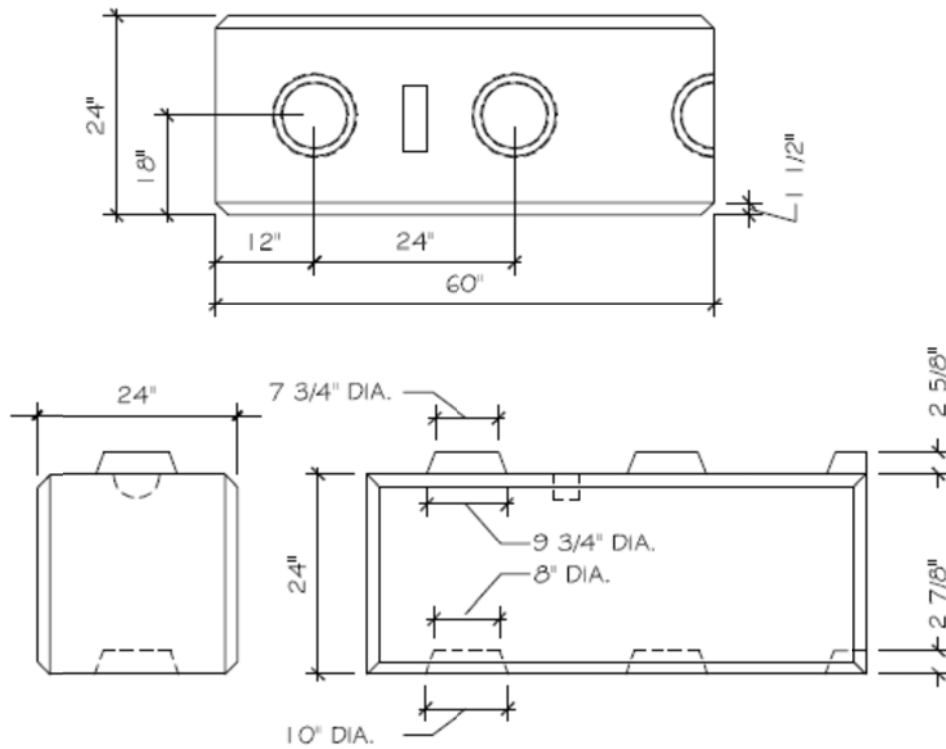
24" x 36" x 48" Jumbo Knob
Block with Beveled Edges



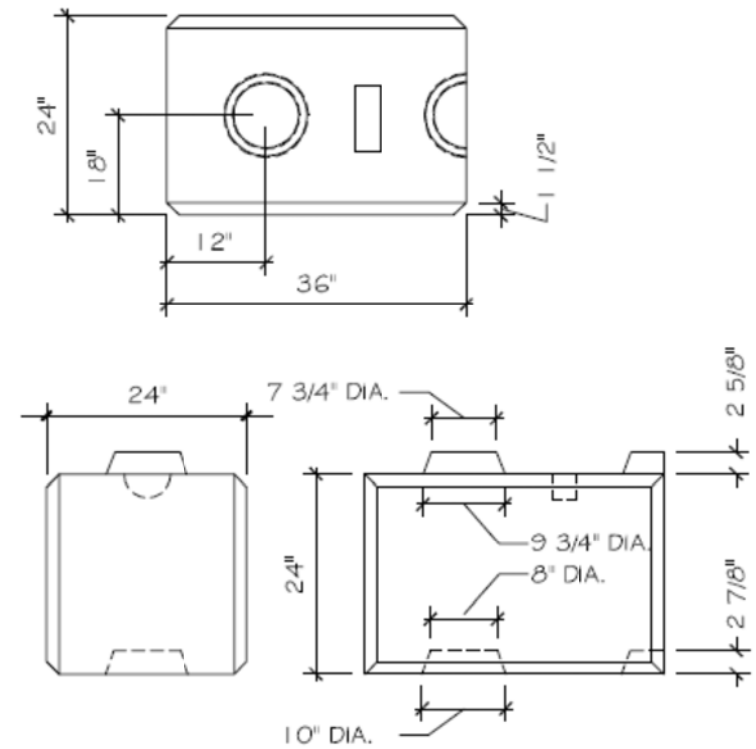
701 Waverly Street, Framingham, MA 01702

(888) 266- 4425, fax 508-653-6672

sales@conigliaroblock.com www.conigliaroblock.com



STANDARD 5' JAM KNOB BLOCK



STANDARD 3' JAM KNOB BLOCK

STANDARD JAM BLOCKS WITH BEVELED EDGES

SCALE: 1/2" = 1'-0"

Please Note – Jam blocks may be ordered right or left facing, i.e. the blocks shown above are both “right facing” whereby the bisected knob is shown on the right edge of the block. If “left facing” the bisected knob would be shown on the left edge of the block.



701 Waverly Street, Framingham, MA 01702

(888) 266- 4425, fax 508-653-6672

sales@conigliaroblock.com www.conigliaroblock.com



Smooth Face Finish





DESIGNER IMPRINT FINISHES



ROCK FACE

Subtle Rock Face



QUARRY CUT

Stacked Stone, Deep Grout Lines



ROUGH STONE

More Pronounced Rock Face



CUT STONE

*Subtle Stacked Stone,
Shallow Grout Lines*

Inside Corners, Outside Corners, Special Angle Corners and Curved Walls with Conigliaro Blocks

Conigliaro Blocks may be used to create Inside Corners, Outside Corners, Special Angle Corners and Curved Walls.



Inside Corners

With Smooth face blocks Inside and Outside Corners are easy and can be accomplished with standard blocks:



When dealing with blocks with a designer finish, we pour a special Inside Corner Block which is shown here:



This is how Inside Corner Blocks with a designer finish look when assembled:



Inside Corner Blocks with a designer finish in the field:



Inside Corner Blocks with a designer finish in the field:



Outside Corners

When dealing with blocks with a designer finish, we pour a special 2 Face Corner Block (either “2 Face Right” or “2 Face Left”). Here a 2 Face Left is shown:



Outside Corner in the field:



Special Angle Corners

Special Angle Corners are created using a custom poured “Special Angle Block”:



Special Angle Block in the field. With Special Angle Corners you end up with two separate walls meeting at the angle point:

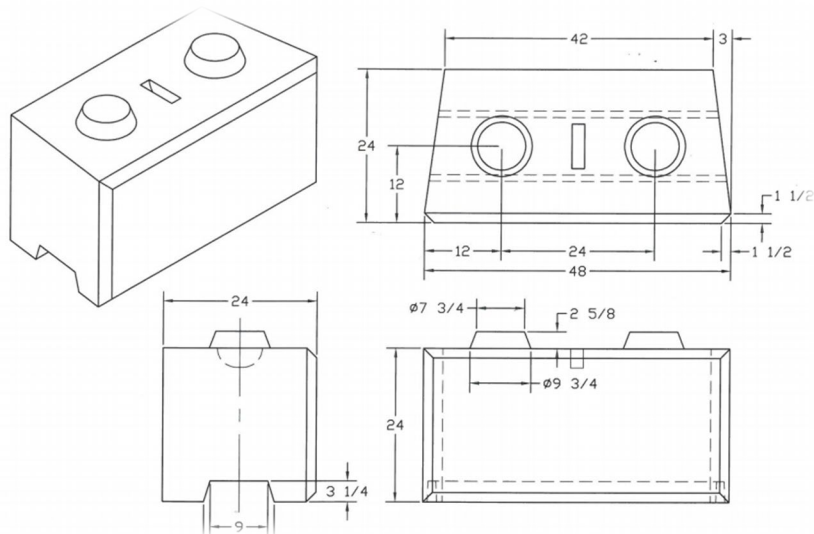


Special Angle Block in the field:



Curved Walls Using Radius Blocks

When creating a curved wall you would use our Full Knob Radius and Full Flat Radius Blocks to create the bend. The tightest bend possible with our Radius Blocks is 14 feet. Here's a Radius Block schematic:



Radius Blocks in the field:



Radius Blocks in the field:



Radius Blocks in the field:



Call today for more information about Inside Corners, Outside Corners, Special Angle Corners and Curved Walls using Conigliaro Blocks:



(888) CONIG - 25



Flat Top Blocks



Flat Top blocks are blocks with the knobs blanked out, i.e. eliminated from the top when pouring the blocks. This is a more cost-effective way to use our standard 2x2x2, 2x2x4 or 2x2x6 blocks as the final course of blocks rather than using an additional layer of cap blocks that are not needed to retain earth.

Standard and Jumbo Lines
Approximate Block Weights
Applicable for 3000, 4000 and 5000 psi State Mix
Assumes 147 lbs per cubic foot
 (Can range from approximately 130 to 150 lbs per cubic foot)

Block Name	Block Weight (lbs)
STANDARD BLOCKS	
2' x 2' x 4' Full Knob	2352
2' x 2' x 2' Half Knob	1176
1' x 2' x 4' Knob	1176
1' x 2' x 2' Half Knob	588
2' x 2' x 3' Jam Knob	1764
2' x 2' x 5' Jam Knob	2940
2' x 2' x 6' Full Knob	3528
JUMBO BLOCKS	
2' X 3' X 4' Full Knob	3528
2' X 3' X 2' Half Knob	1764

Please note – when ordering “flat top” blocks, i.e. any of the above blocks without the male knobs on top, the weight of each block is lower by about 11.2 lbs per eliminated knob. See each drawing to determine how many knobs would be eliminated per block.



701 Waverly Street, Framingham, MA 01702

(888) 266- 4425, fax 508-653-6672

sales@conigliaroblock.com www.conigliaroblock.com



Technical Publication Regarding Final Product Color Variation

All our Plas-Crete and Concrete Block products are pre-cast and as such individual blocks may be subject to variation in color upon curing due to many factors, including:

- Temperature and Humidity during pouring operations
- Time of year and/or season of the pour
- Pour to pour and/or truck to truck cement powder color
- Amount of cement in the mix needed to achieve specific psi rating
- The slump of the mix
- The use of form release

This potential variation in color can become more pronounced when there is a shortage of cement powder on the market, resulting in the need for our vendors to procure the powder from multiple sources with inherently different cement color hues.