

SYMBOLS

|   | COUNT |
|---|-------|
| Light Instr ETC Source 4 LED2LS 19deg @171W         | 2     |
| Light Instr ETC Source 4 LEDLS 26deg @117W          | 4     |
| Light Instr ETC Source 4 LED2LS 36deg @171W         | 40    |
| Light Instr ETC Source 4 LED 50deg @171W            | 2     |
| Light Instr ETC Source 4 LED2DS 15-30deg Zoom @171W | 9     |
| Light Instr ETC Source 4 LED2LS Cyclight @171W      | 3     |
| ETC Source 4 05deg @750w                            | 2     |
| ETC Source 4 19deg @750W                            | 3     |
| ETC Source 4 26deg @750W                            | 4     |
| Light Instr ETC Source 4 36deg @750W                | 8     |
| Light Instr ETC Source 4 Zoom 15-30deg @750w        | 44    |
| ETC D60 Lustr (Medium) @161W                        | 22    |
| ETC D60 Lustr (Wide Oval) @161W                     | 1     |
| ETC Source 4 PAR WFL @750W                          | 3     |
| Light Instr VariLite VLZ Profile @620               | 6     |
| Li650Wtr Spotlight VD 12 H CC @1000 W               | 2     |

NOTES

- Linest 8, please connect a 10' pipe to the street lamp. The street lamp needs to be 10' off of the ground.

LEGEND

|          |          |
|----------|----------|
| Color    | Color    |
| Template | Template |
| Unit #   | Unit #   |
| Cl. #    | Cl. #    |



ACCESSORIES

|          |          |
|----------|----------|
| Gobo     | Gobo     |
| Iris     | Iris     |
| DMX Iris | DMX Iris |
| I-Cues   | I-Cues   |

**USC School of Dramatic Arts**  
**BING THEATRE**  
 3400 Watt Way, Los Angeles, CA 90007

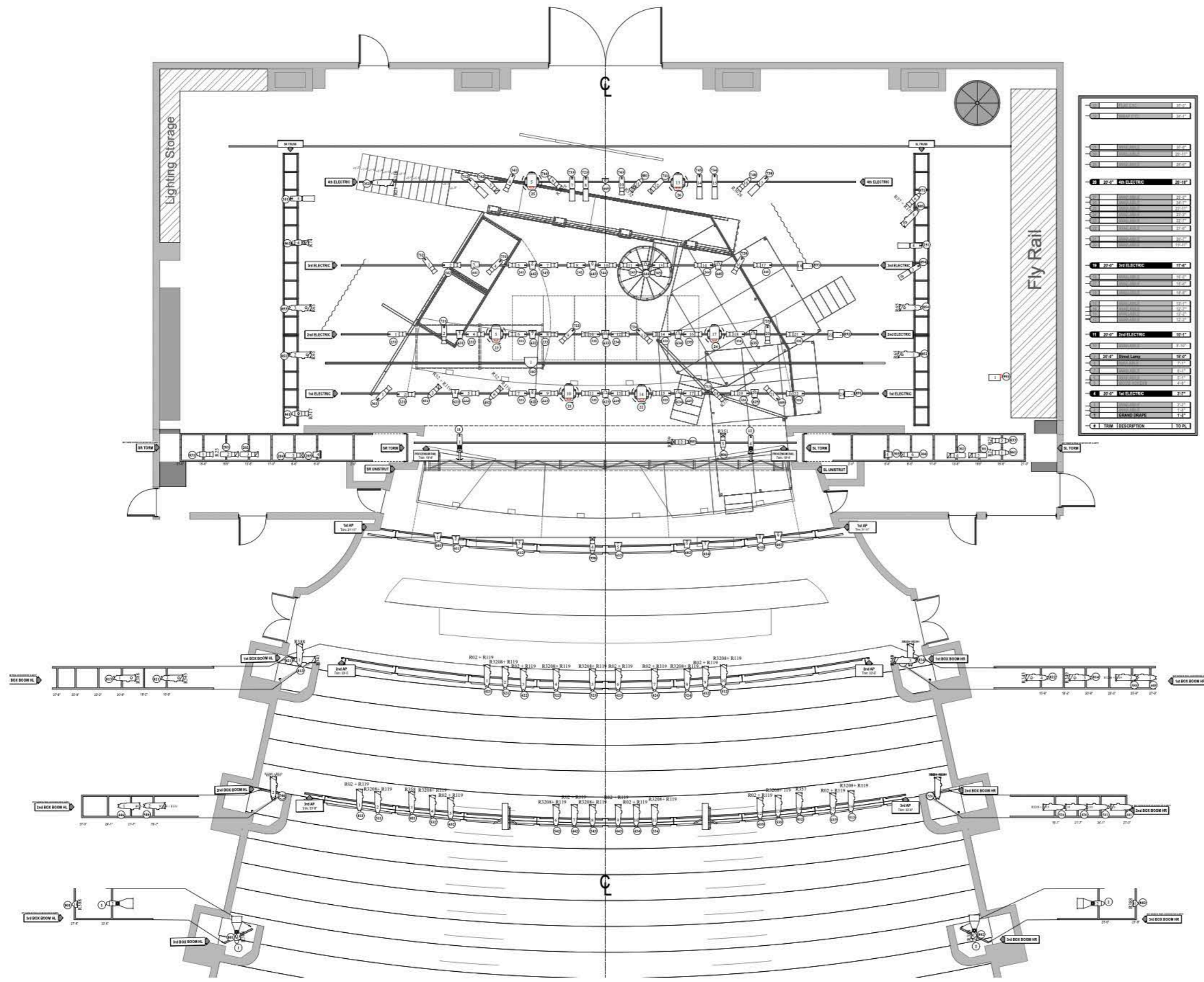
**LIGHTING DESIGNER**  
**FERNANDO GONZALEZ**  
 (951) 840-6012  
 fdg@usc.edu

**DIRECTED BY**..... Anita Daisheil-Sparks  
**STAGE MANAGER**..... Lexay Glouberman  
**LIGHTING DESIGNER**..... Fernando Gonzalez  
**SCENIC DESIGNER**..... Kate Schaaf  
**SOUND DESIGNER**..... Renata Finamore  
**PROJECTION DESIGNER**..... Kate Schaaf  
**COSTUME DESIGNER**..... Crystal Son  
**TECHNICAL DIRECTOR**..... Monica Kosmos

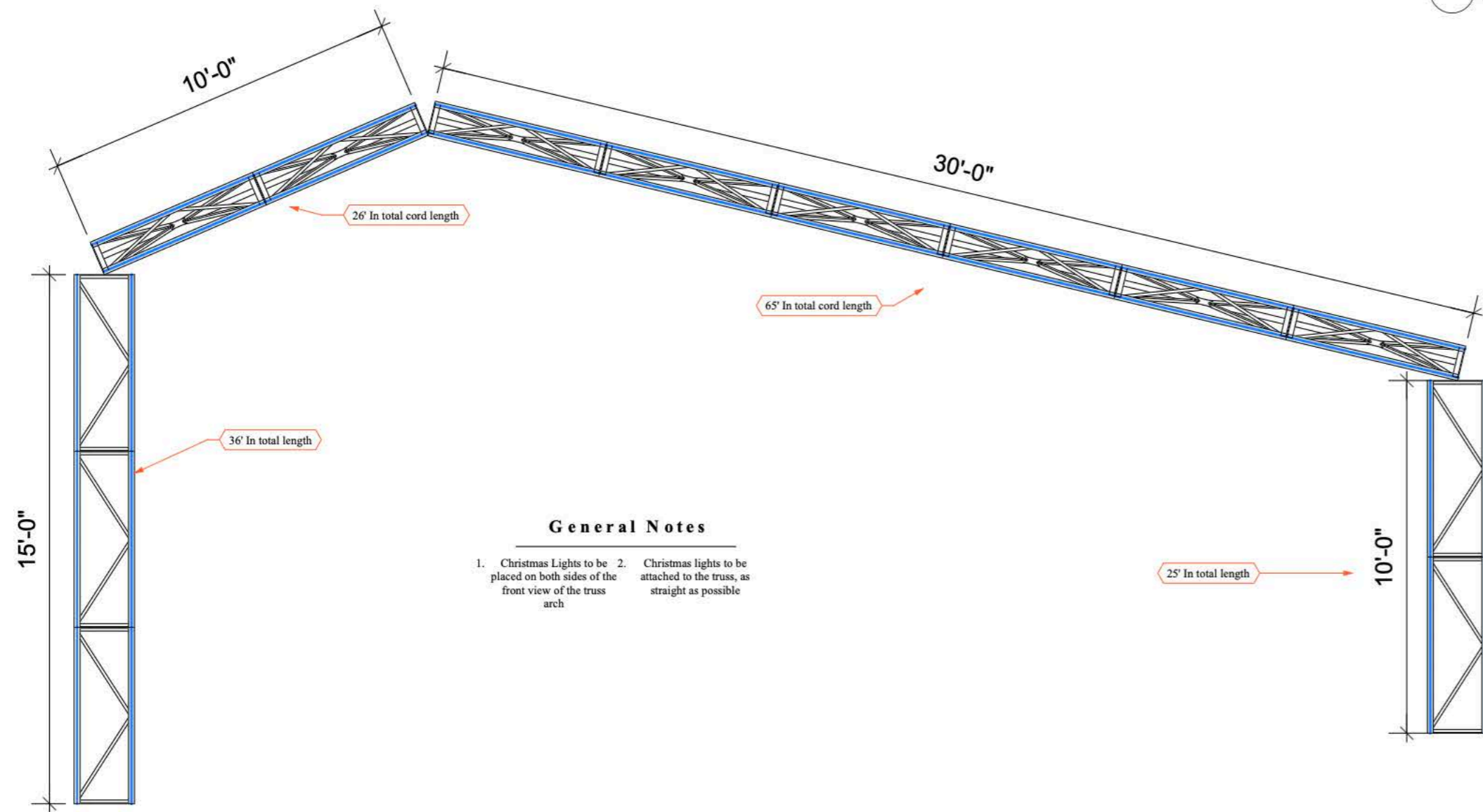
|  |                                      |
|--|--------------------------------------|
| <b>SHEET TITLE</b><br><b>LIGHT PLOT</b>  | <b>DRAWN BY</b><br>Fernando Gonzalez |
| This drawing represents visual concepts and construction suggestions only. It does not replace the knowledge and advice of a licensed structural engineer. The designer is unqualified to determine the structural appropriateness of this design and will not assume responsibility for improper engineering. | <b>SCALE</b><br>1/4" = 1' - 0"       |
|  | <b>REVISION</b><br>FINAL             |
|  | <b>DATE</b><br>2/29/24               |

SHEET

**1**  
OF 1



2 Truss Arch  
Scale: 1/2" = 1'-0"



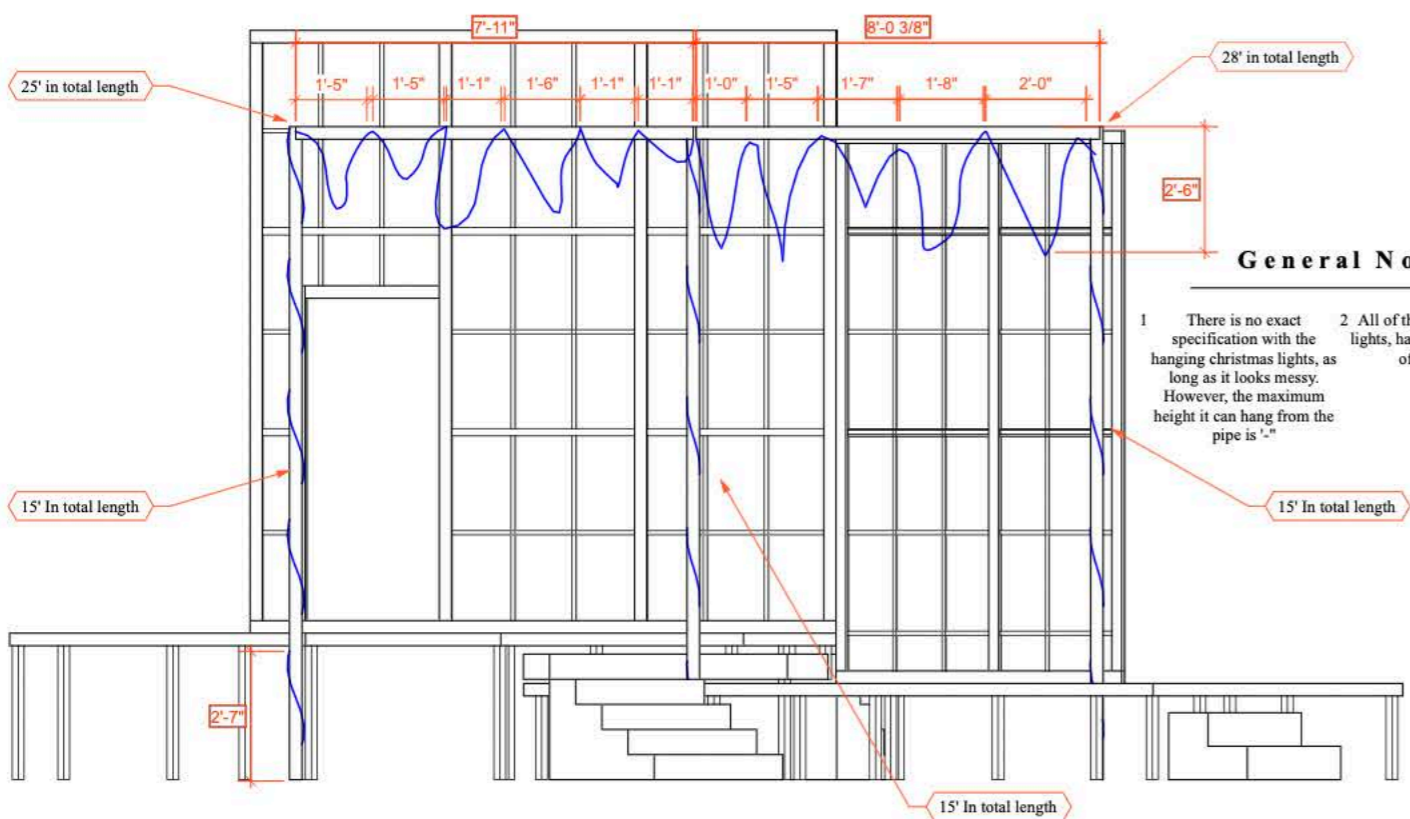
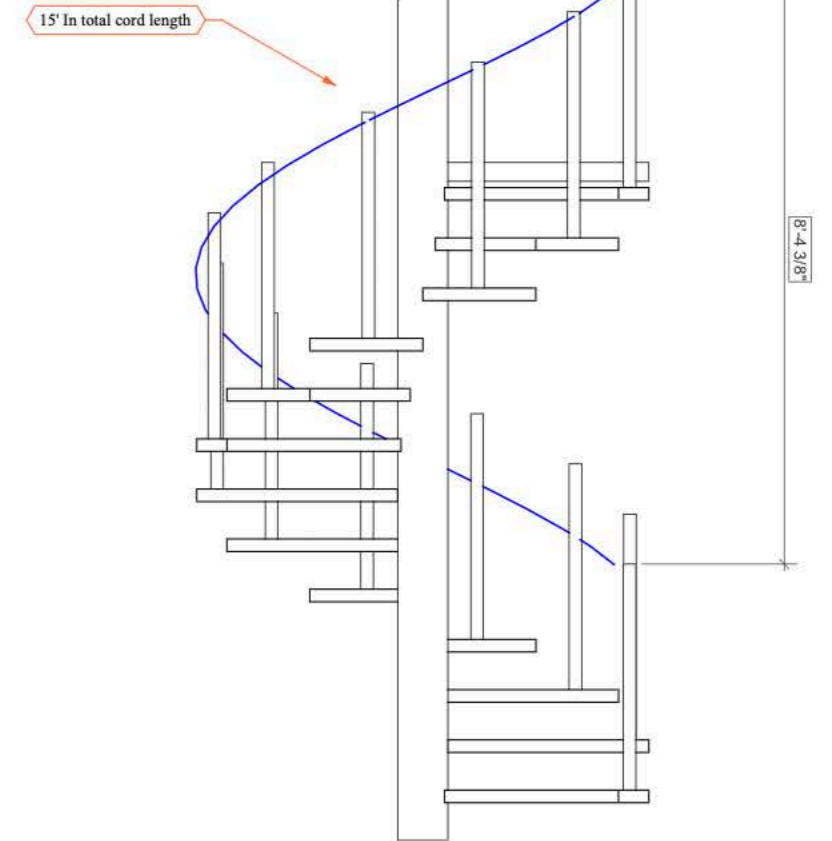
**General Notes**

1. Christmas Lights to be placed on both sides of the front view of the truss arch
2. Christmas lights to be attached to the truss, as straight as possible

4 Spiral Staircase  
Scale: 3/4" = 1'-0"

**General Notes**

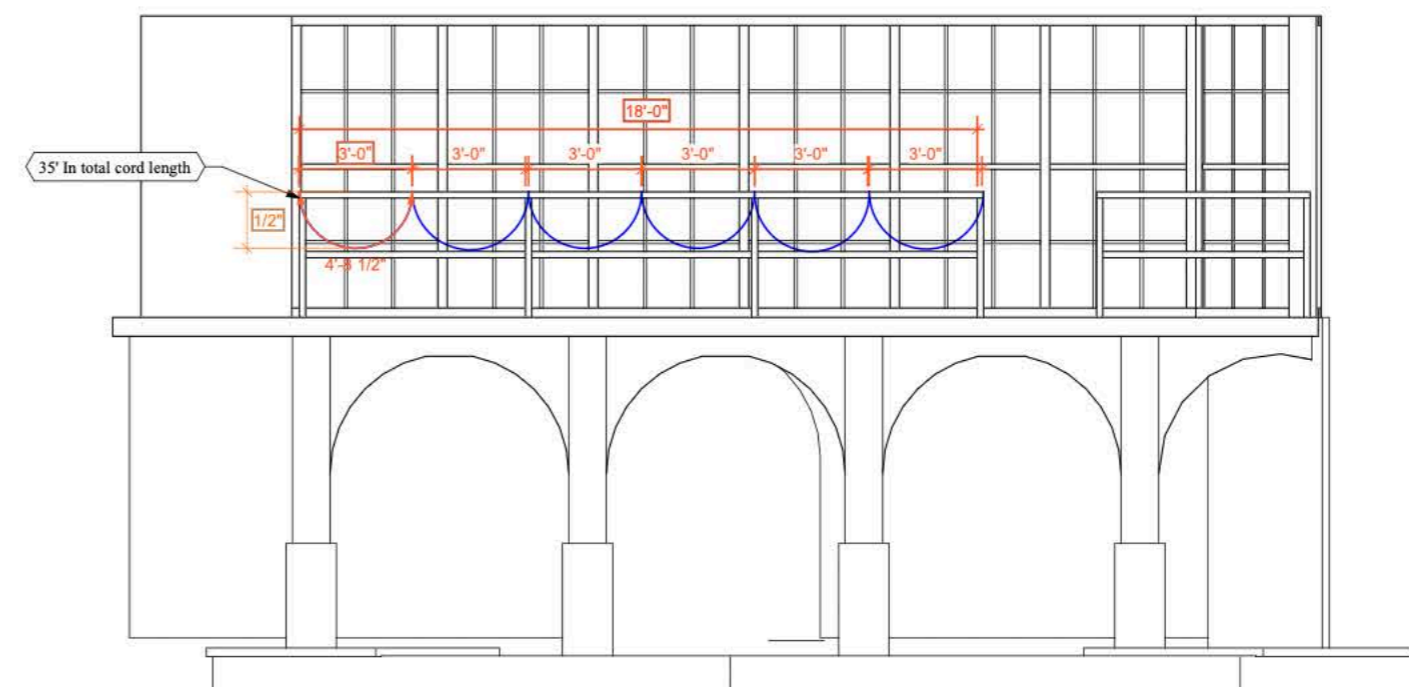
1. Please attached Christmas Lights as closely to the railing as possible.



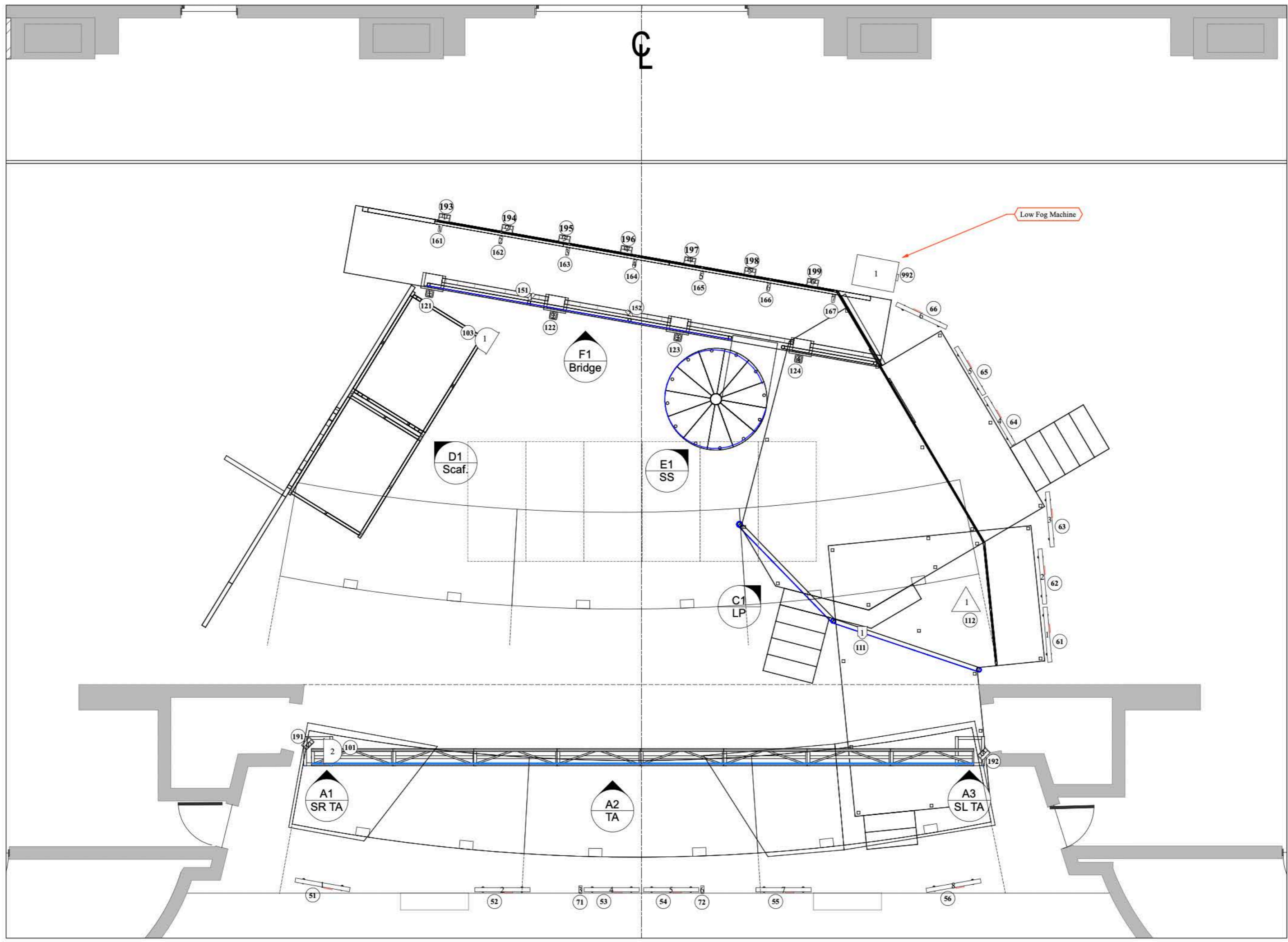
**General Notes**

1. There is no exact specification with the hanging christmas lights, as long as it looks messy. However, the maximum height it can hang from the pipe is 1'-4"
2. All of the three Christmas lights, have a spiral distance of 2'-7" apart.










3 Bridge  
Scale: 3/8" = 1'-0"

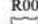

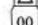







|  |                        |   |
|--|------------------------|---|
| Show Name<br><b>RENT</b>                         |                        | Lighting Designer<br><b>Fernando Gonzalez</b> |
| Drawn By<br><b>Fernando Gonzalez</b>             | Date<br><b>2/23/24</b> |   |
| SHEET TITLE<br><b>Christmas Lights DIMENSION</b> |                        | fdg@usc.edu<br>(951) 840-6012                 |



SYMBOLS

-  Altman 6" Fresnel @750W
-  Light Instr ADJ Mega Go Par64 RGBA @24W
-  Light Instr Chauvet DJ Freedom Par Hex 4 @35 W
-  Light Instr USITT PAR MR-16 Birdie-MFL @50 W
-  Light Instr Elation DLED Strip RGBAW @100w
-  Light SFX USITT Practical @TBD
-  Light SFX City Theatrical Dry Ice Fog Machine
-  Light SFX ADJ Haze Generator
-  Light Instr USITT 18Scoop @2000 W

| LEGEND   |        | ACCESSORIES  |  |
|--|--------|--|--|
|  R00      | Color  |  Gobo     |  |
|  Template |        |  Iris     |  |
|  00       | Unit # |  DMX Iris |  |
|  00       | Ch. #  |  I-Cues   |  |

**NOTES**

- The Stove is the practical
- Haze Machine is located on the the fly rail bridge
- Low Fog machine is optional,



**USC School of Dramatic Arts**  
BING THEATRE  
3430 Watt Way, Los Angeles, CA 90007



**LIGHTING DESIGNER**  
**FERNANDO GONZALEZ**  
(951) 840 - 6012  
fdg@usc.edu


**Deck Plot**

**SHEET**  
**1** OF **6**



|                            |
|----------------------------|
| DRAWN<br>Fernando Gonzalez |
| SCALE<br>3/8" = 1' - 0"    |
| REVISION<br>FINAL          |
| DATE<br>2/23/24            |




SYMBOLS

-  Altman 6" Fresnel @750W


---

-  Light Instr ADJ Mega Go Par64 RGBA @24W
-  Light Instr Chauvet DJ Freedom Par Hex 4 @35 W




---

-  Light Instr USITT PAR MR-16 Birdie-MFL @50 W


---

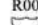







-  Light Instr Elation DLED Strip RGBAW @100w

---

-  Light SFX USITT Practical @TBD
-  Light SFX City Theatrical Dry Ice Fog Machine
-  Light SFX ADJ Haze Generator

---

-  Light Instr USITT 18Scoop @2000 W

| LEGEND  |          | ACCESSORIES   |          |
|---|----------|---|----------|
|  R00 | Color    |  T | Gobo     |
|  00  | Template |  I | Iris     |
|  00  | Unit #   |  I | DMX Iris |
|  00  | Ch. #    |  I | L-Cues   |

**NOTES**  
The Stove is the practical;  
CH. 112

**USC School of Dramatic Arts**  
BING THEATRE  
3400 Watt Way, Los Angeles, CA 90007



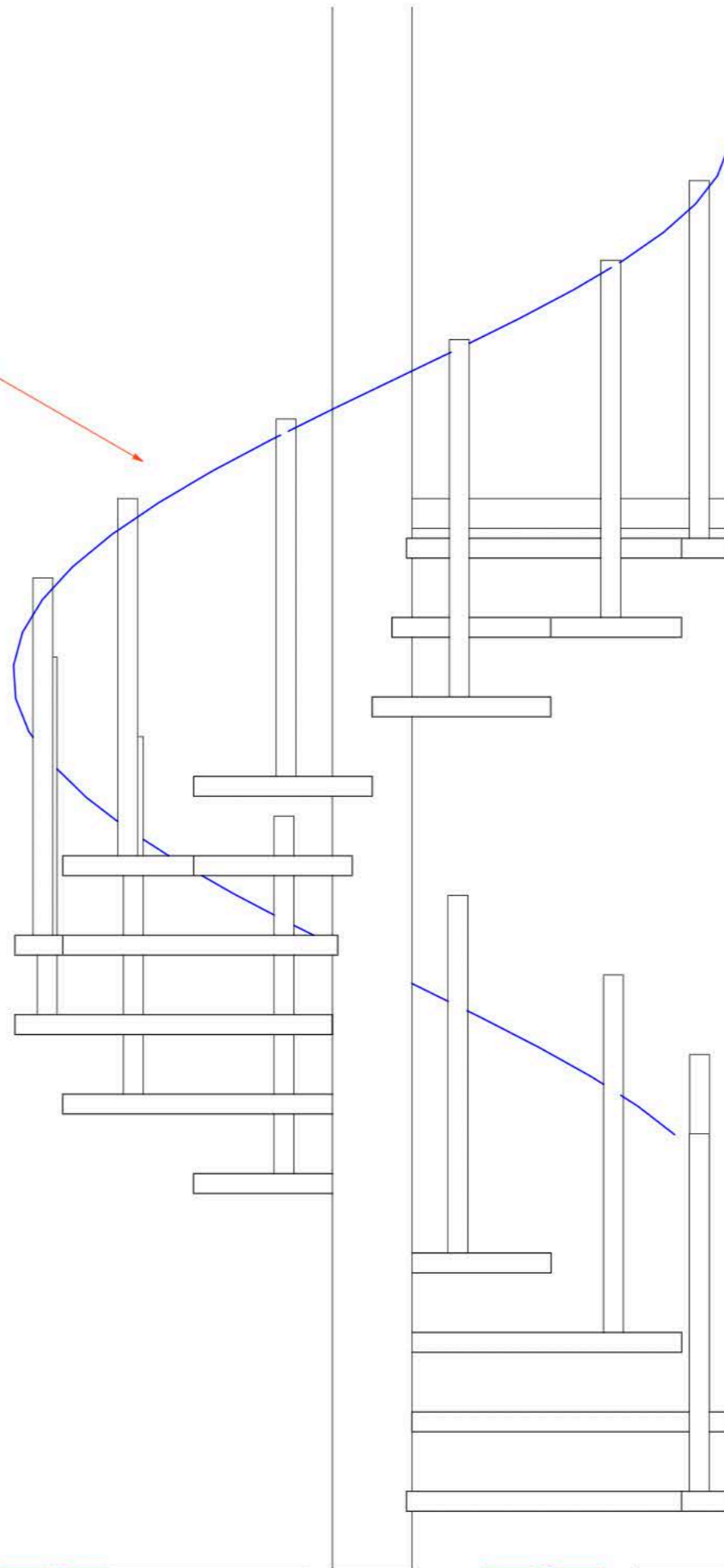
**LIGHTING DESIGNER**  
**FERNANDO GONZALEZ**  
(951) 840 - 6012  
fdg@usc.edu

This drawing represents visual concepts and construction suggestions only. It does not replace the knowledge and advice of a licensed structural engineer. The designer is unqualified to determine the structural appropriateness of this design and will not assume responsibility for improper engineering.


|                                   |                                      |
|-----------------------------------|--------------------------------------|
| <b>DRAWN</b><br>Fernando Gonzalez | <b>SHEET</b><br><b>3</b> OF <b>6</b> |
| <b>SCALE</b><br>AS NOTED          |                                      |
| <b>REVISION</b><br>FINAL          |                                      |
| <b>DATE</b><br>2/23/24            |                                      |

C1 Loft Platform  
Scale: 1" = 1'-0"



CH.  
1041




SYMBOLS

-  Altman 6" Fresnel @750W


---

-  Light Instr ADJ Mega Go Par64 RGBA @24W
-  Light Instr Chauvet DJ Freedom Par Hex 4 @35 W

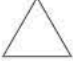


---

-  Light Instr USITT PAR MR-16 Birdie-MFL @50 W


---









-  Light Instr Elation DLED Strip RGBAW @100w

---

-  Light SFX USITT Practical @TBD
-  Light SFX City Theatrical Dry Ice Fog Machine
-  Light SFX ADJ Haze Generator

---

-  Light Instr USITT 18Scoop @2000 W

- |   |  |  |  |
|---|--|--|--|
| <b>LEGEND</b>   |  | <b>ACCESSORIES</b>   |  |
|  R00 Color |  Template |  Gobo     |  Iris   |
|  00 Unit # |  00 Ch. # |  DMX Iris |  I-Cues |

**NOTES**  
If possible, please use the pixel mapping christmas lights for the spiral staircase. If not available, white bulbs christmas lights are perfectly fine to use.

**USC School of Dramatic Arts**  
BING THEATRE  
3400 Watt Way, Los Angeles, CA 90007



**LIGHTING DESIGNER**  
**FERNANDO GONZALEZ**  
(951) 840 - 6012  
fdg@usc.edu

This drawing represents visual concepts and construction suggestions only. It does not replace the knowledge and advice of a licensed structural engineer. The designer is unqualified to determine the structural appropriateness of this design and will not assume responsibility for improper engineering.

**Deck Plot - SS**

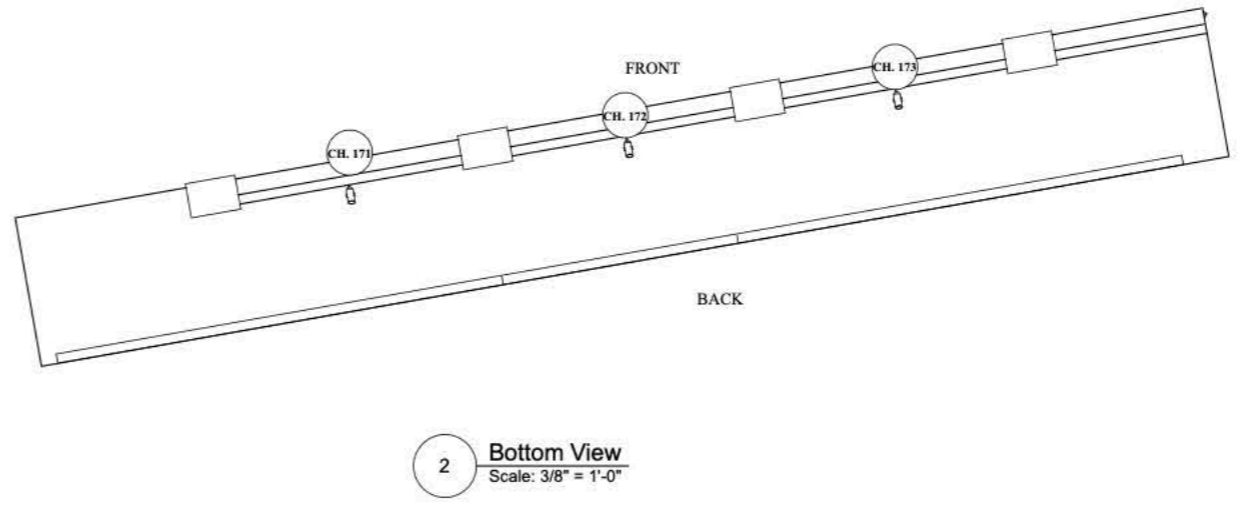
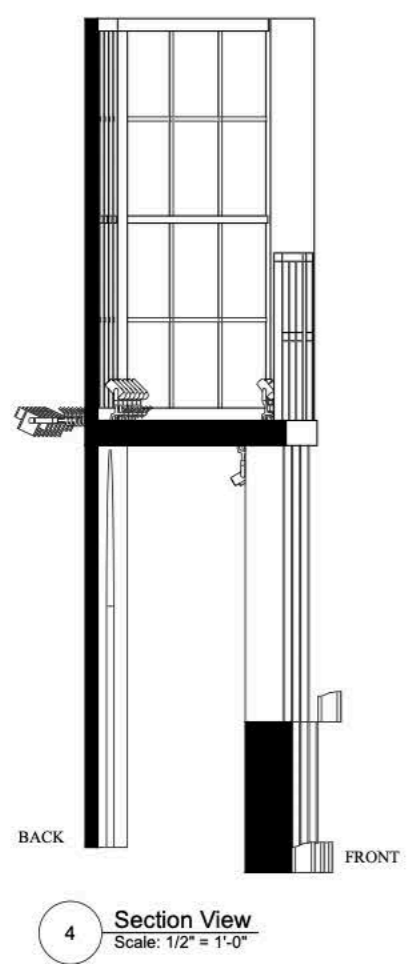
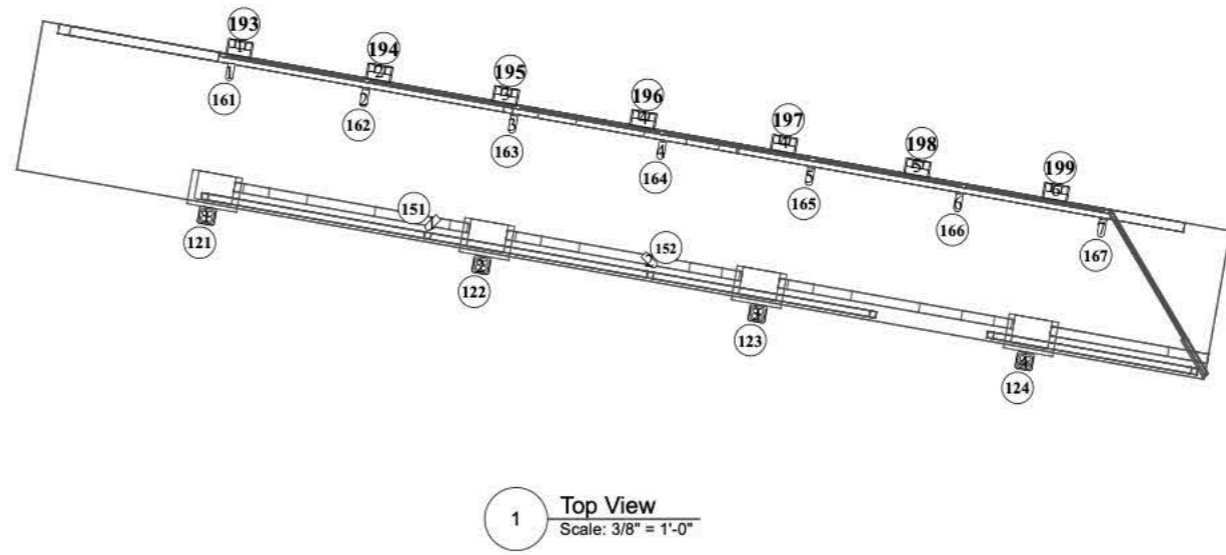
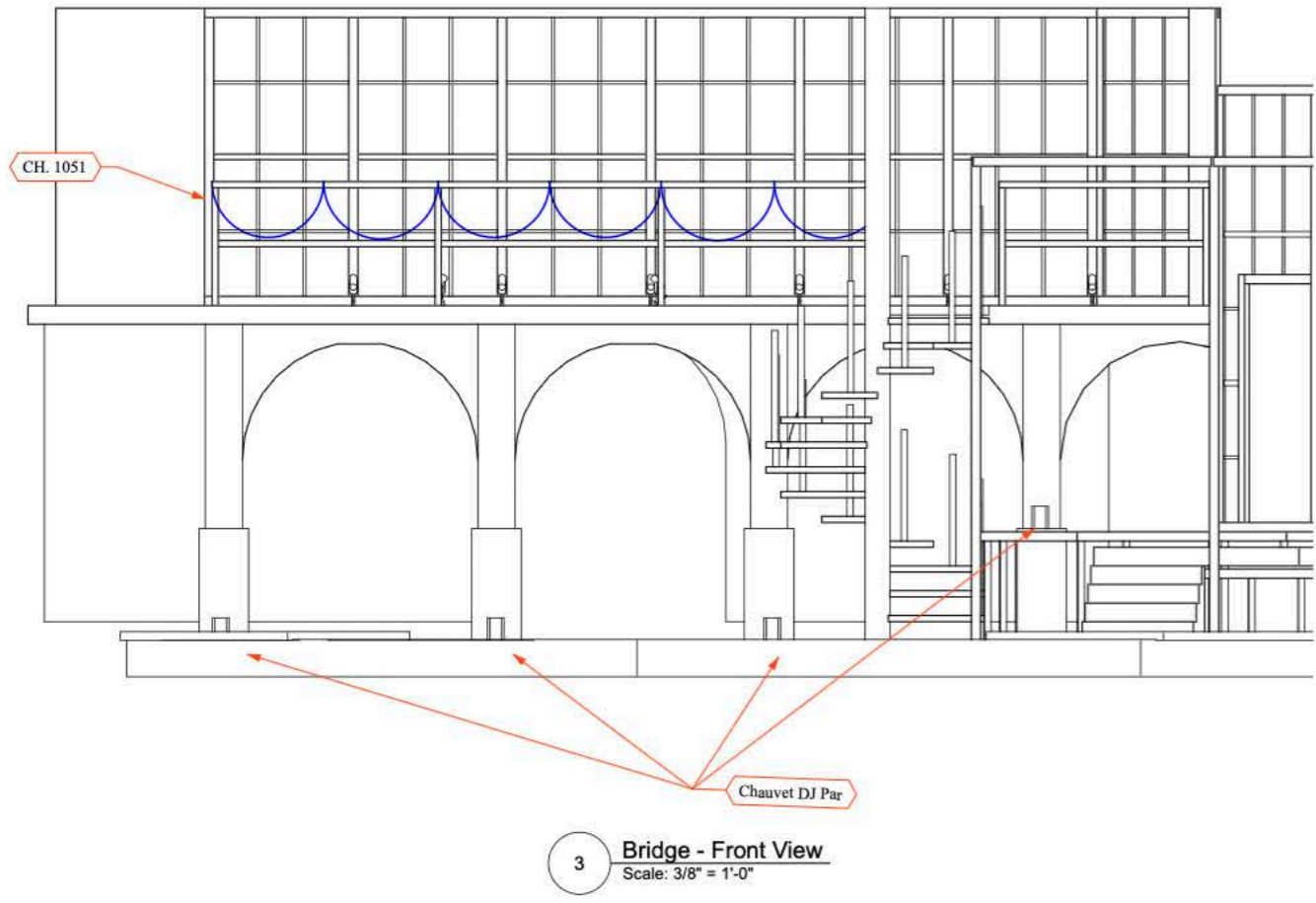
**DRAWN**  
Fernando Gonzalez

**SCALE**  
1-2/1" = 1'-1"

**REVISION**  
FINAL

**DATE**  
2/23/24

**SHEET**  
**4** OF 6



| SYMBOLS |  |
|---------|--|
|         | Altman 6" Fresnel @750W                        |
|         | Light Instr ADJ Mega Go Par64 RGBA @24W        |
|         | Light Instr Chauvet DJ Freedom Par Hex 4 @35 W |
|         | Light Instr USITT PAR MR-16 Birdie-MFL @50 W   |
|         | Light Instr Elation DLED Strip RGBAW @100w     |
|         | Light SFX USITT Practical @TBD                 |
|         | Light SFX City Theatrical Dry Ice Fog Machine  |
|         | Light SFX ADJ Haze Generator                   |
|         | Light Instr USITT 18Scoop @2000 W              |

| LEGEND | ACCESSORIES |
|--------|-------------|
|        |             |
|        |             |
|        |             |
|        |             |

**NOTES**

If possible, please use the pixel mapping christmas lights for the spiral staircase. If not available, colored bulbs christmas lights are perfectly fine to use.

**USC School of Dramatic Arts**  
 BING THEATRE  
 3400 Watt Way, Los Angeles, CA 90007

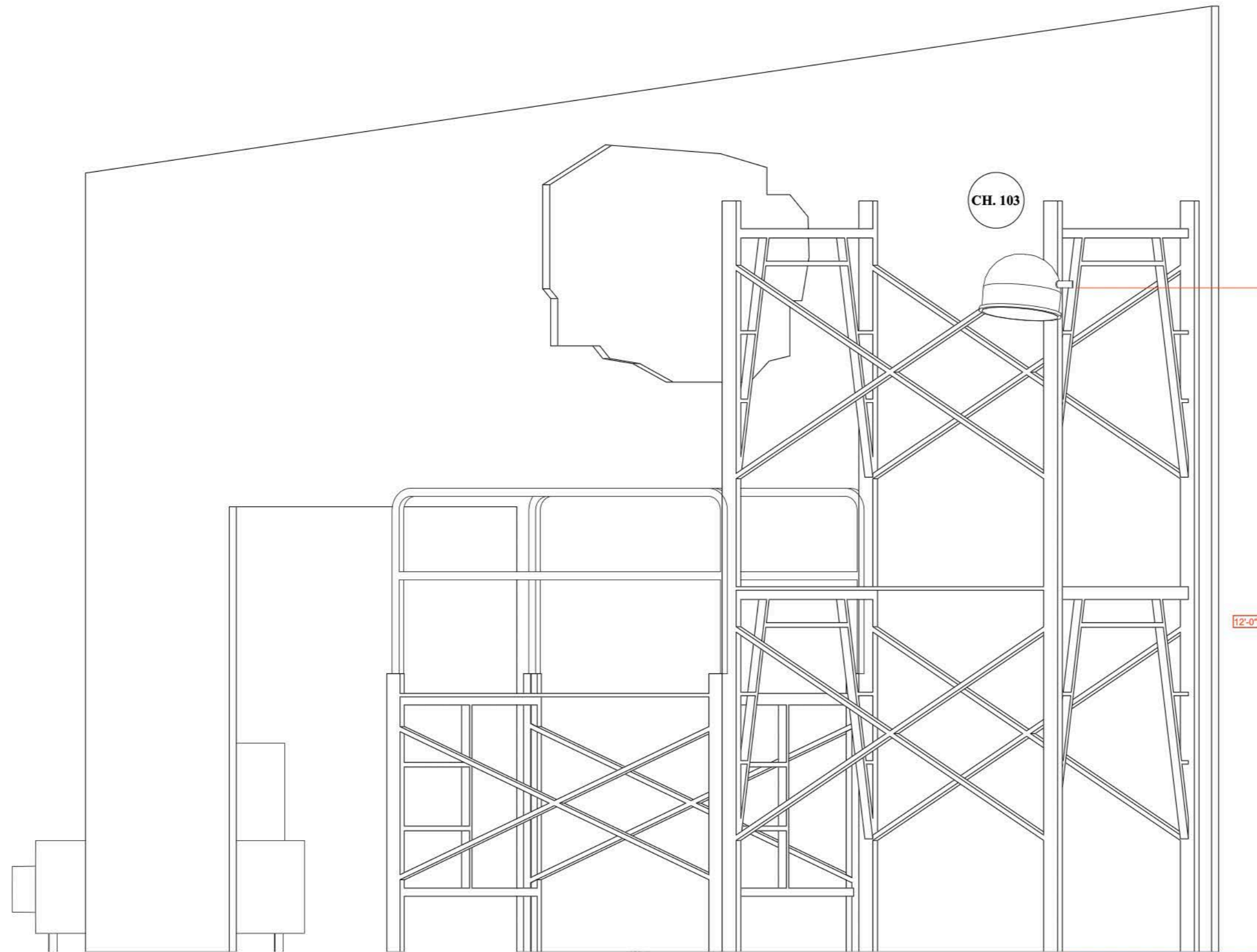
**LIGHTING DESIGNER**  
**FERNANDO GONZALEZ**  
 (951) 840 - 6012  
 fdg@usc.edu

This drawing represents visual concepts and construction suggestions only. It does not replace the knowledge and advice of a licensed structural engineer. The designer is unqualified to determine the structural appropriateness of this design and will not assume responsibility for improper engineering.

**Deck Plot - Bridge**


**SHEET**  
**5** OF **6**

DRAWN: Fernando Gonzalez  
 SCALE: AS NOTED  
 REVISION: FINAL  
 DATE: 2/23/24





5 Section View - Scaffolding  
Scale: 1" = 1'-0"


SYMBOLS

-  Altman 6" Fresnel @750W


---

-  Light Instr ADJ Mega Go Par64 RGBA @24W
-  Light Instr Chauvet DJ Freedom Par Hex 4 @35 W

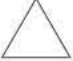

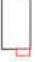
---

-  Light Instr USITT PAR MR-16 Birdie-MFL @50 W


---

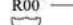

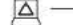

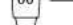

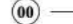

-  Light Instr Elation DLED Strip RGBAW @100w

---

-  Light SFX USITT Practical @TBD
-  Light SFX City Theatrical Dry Ice Fog Machine
-  Light SFX ADJ Haze Generator

---

-  Light Instr USITT 18Scoop @2000 W

| LEGEND  |          | ACCESSORIES   |          |
|---|----------|---|----------|
|  R00 | Color    |  T     | Gobo     |
|  00  | Template |  I     | Iris     |
|  00  | Unit #   |  DMX I | DMX Iris |
|  00  | Ch. #    |  L-C   | L-Cues   |

**NOTES**  
If possible, please use the Anthom WIFI Bulb for the street lamps

**USC School of Dramatic Arts**  
BING THEATRE  
3400 Watt Way, Los Angeles, CA 90007



**LIGHTING DESIGNER**  
**FERNANDO GONZALEZ**  
(951) 840 - 6012  
fdg@usc.edu

This drawing represents visual concepts and construction suggestions only. It does not replace the knowledge and advice of a licensed structural engineer. The designer is unqualified to determine the structural appropriateness of this design and will not assume responsibility for improper engineering.

**Deck Plot - Scaffolding**

|                            |                                   |
|----------------------------|-----------------------------------|
| DRAWN<br>Fernando Gonzalez | <b>SHEET</b><br><br><b>6</b> OF 6 |
| SCALE<br>AS NOTED          |                                   |
| REVISION<br>FINAL          |                                   |
| DATE<br>2/23/24            |                                   |