

# Quality, Convenient Living

*In a Beautifully Designed Space*



Ideally located in the heart of the *Harlow Farms Conservation Community*, North Creek Townhomes offers both convenient city location and easy walking access to *beautiful nature trails*. You will feel right at home with high end condominium style living, enjoying all the comfort of a thoughtfully planned neighborhood and the security of a *service-oriented management team*. Discover why so many people are calling Harlow Farms home!

*Located within  
Harlow Farms Conservation Community*



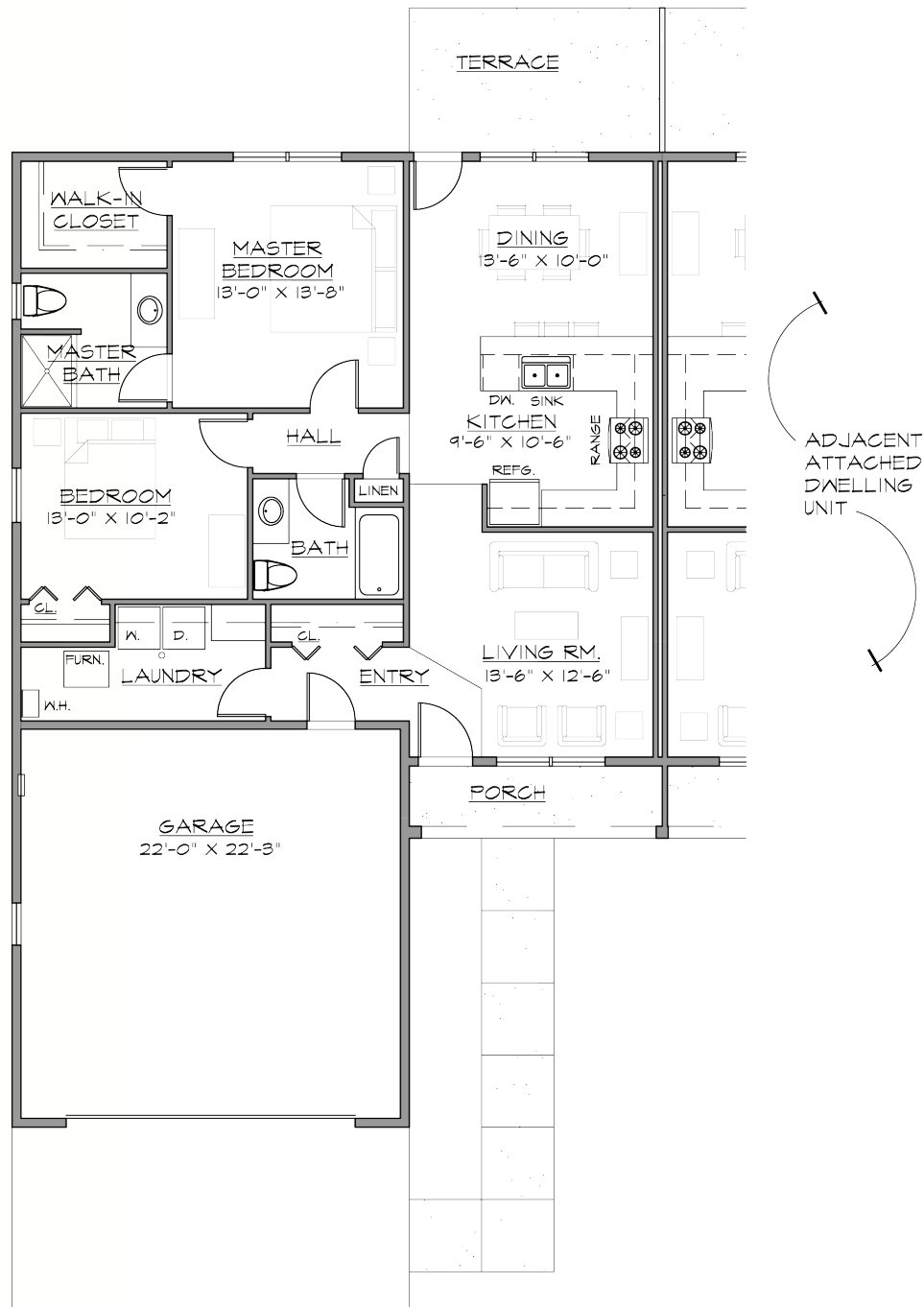


## TOWNHOME FEATURES

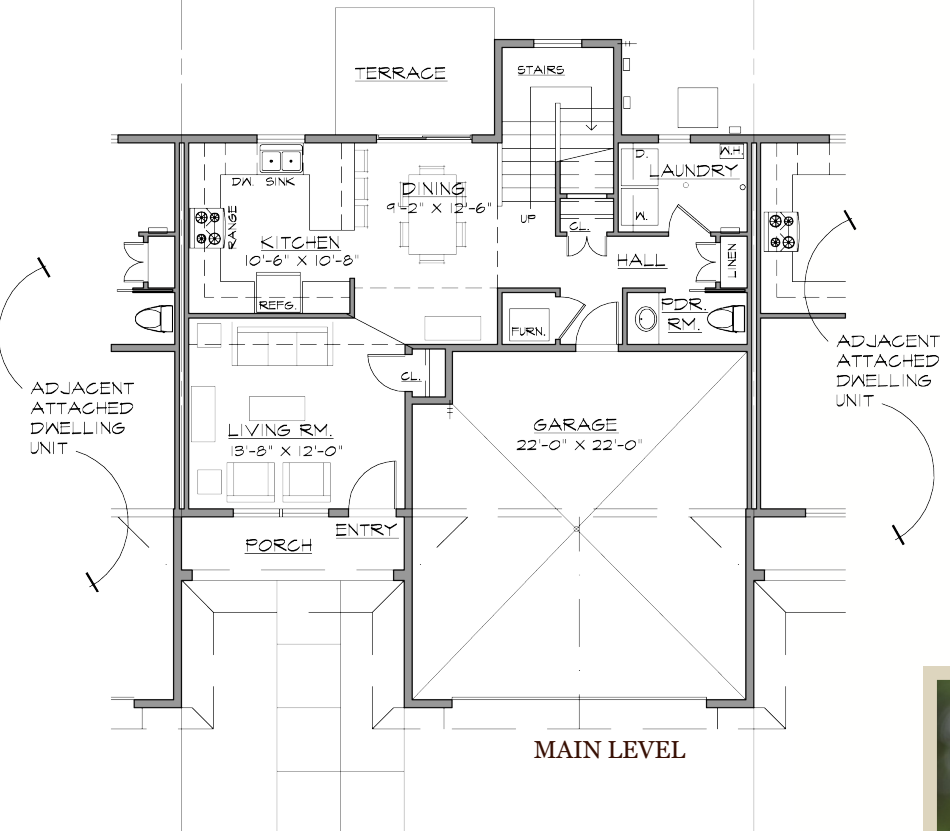
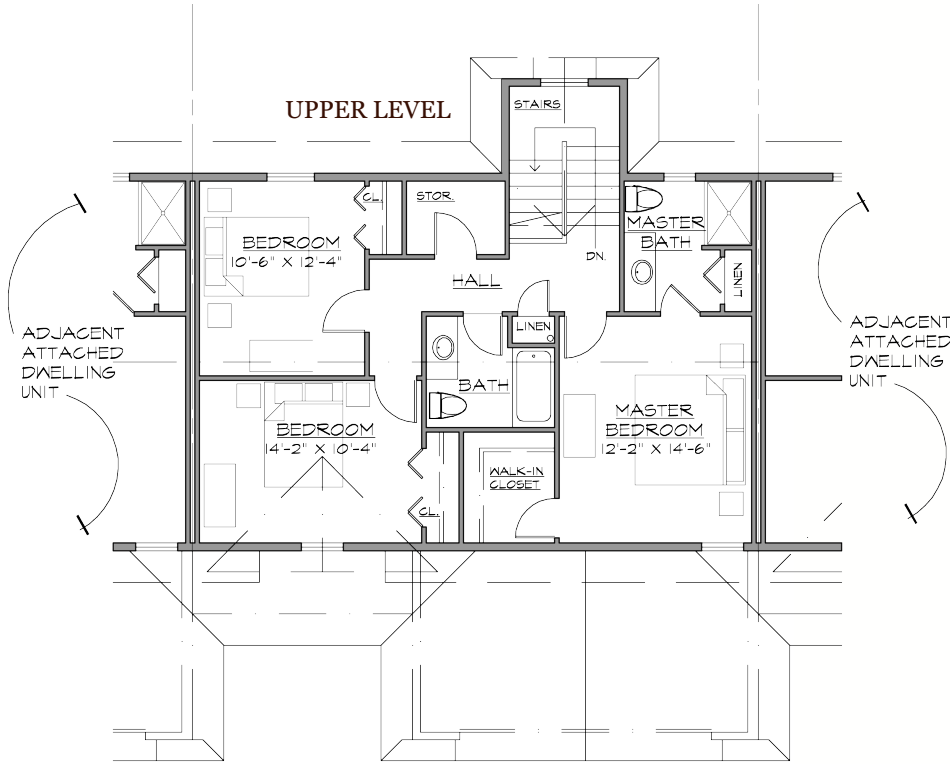
- One level and two level townhomes
- Master suite with private bath and large walk-in closet
- Open kitchen and dining area
- Attached 2-car garage
- High performance, energy efficient design
- Natural gas forced air heating
- Air conditioning
- Washer/Dryer in unit
- Professionally managed

## COMMUNITY FEATURES

- Harlow Farms Community Center
- Located next to conservation areas, trails, and the neighborhood center
- Quiet and convenient living in town
- Fully landscaped grounds
- Driveway and sidewalk to front door
- All underground utilities
- 24-hour Emergency Line
- Complete lawn care and snow removal



**One story, two bedroom  
with attached garage  
1,176 Square Feet of Living Space**



**INTERIOR FEATURES**

- Open design, lots of windows
- Quality laminate/hardwood flooring and plush carpeting throughout
- Stainless steel appliances including a range-hood microwave and a dishwasher
- Lots of cabinets and counter space
- Window blinds
- Large closets
- TV and internet cable-ready
- High quality sound insulation wall system

**EXTERIOR FEATURES**

- Private terrace
- Private front porch entry and walk
- Fully landscaped grounds

**LOCAL LANDMARKS CLOSE BY**

- Iron Ore Heritage Trail
- Marquette General Hospital
- Northern Michigan University
- Lakeshore parks
- Downtown Marquette
- Marquette Golf & Country Club
- GKC Cinema
- Marquette Mountain Ski Area
- Westwood Mall, Target and Walmart
- Econo Foods
- Many restaurants within walking distance

**Two-story, three bedroom  
with attached garage  
1,611 Square Feet of Living Space**





# NORTH CREEK TOWNHOMES

At Harlow Farms



For more information visit us at:  
[www.northcreektownhomes.com](http://www.northcreektownhomes.com)  
 or  
[info@northcreektownhomes.com](mailto:info@northcreektownhomes.com)