

Quality, Convenient Living

In a Beautifully Designed Space



Ideally located in the heart of the *Harlow Farms Conservation Community*, North Creek Townhomes offers both convenient city location and easy walking access to *beautiful nature trails*. You will feel right at home with high end condominium style living, enjoying all the comfort of a thoughtfully planned neighborhood and the security of a *service-oriented management team*. Discover why so many people are calling Harlow Farms home!

*Located within
Harlow Farms Conservation Community*



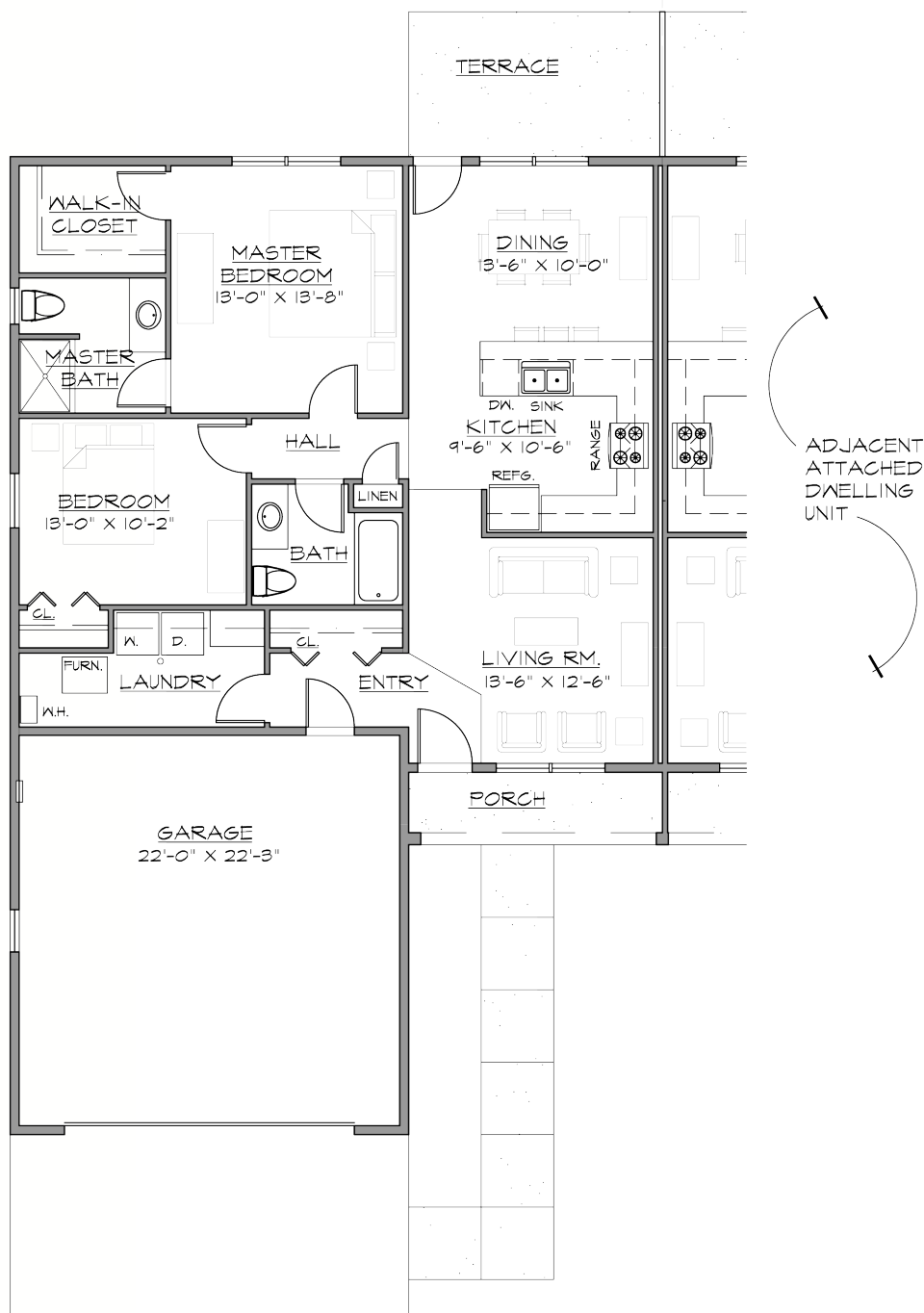


TOWNHOME FEATURES

- One level and two level townhomes
- Master suite with private bath and large walk-in closet
- Open kitchen and dining area
- Attached 2-car garage
- High performance, energy efficient design
- Natural gas forced air heating
- Air conditioning
- Washer/Dryer in unit
- Professionally managed

COMMUNITY FEATURES

- Harlow Farms Community Center
- Located next to conservation areas, trails, and the neighborhood center
- Quiet and convenient living in town
- Fully landscaped grounds
- Driveway and sidewalk to front door
- All underground utilities
- 24-hour Emergency Line
- Complete lawn care and snow removal

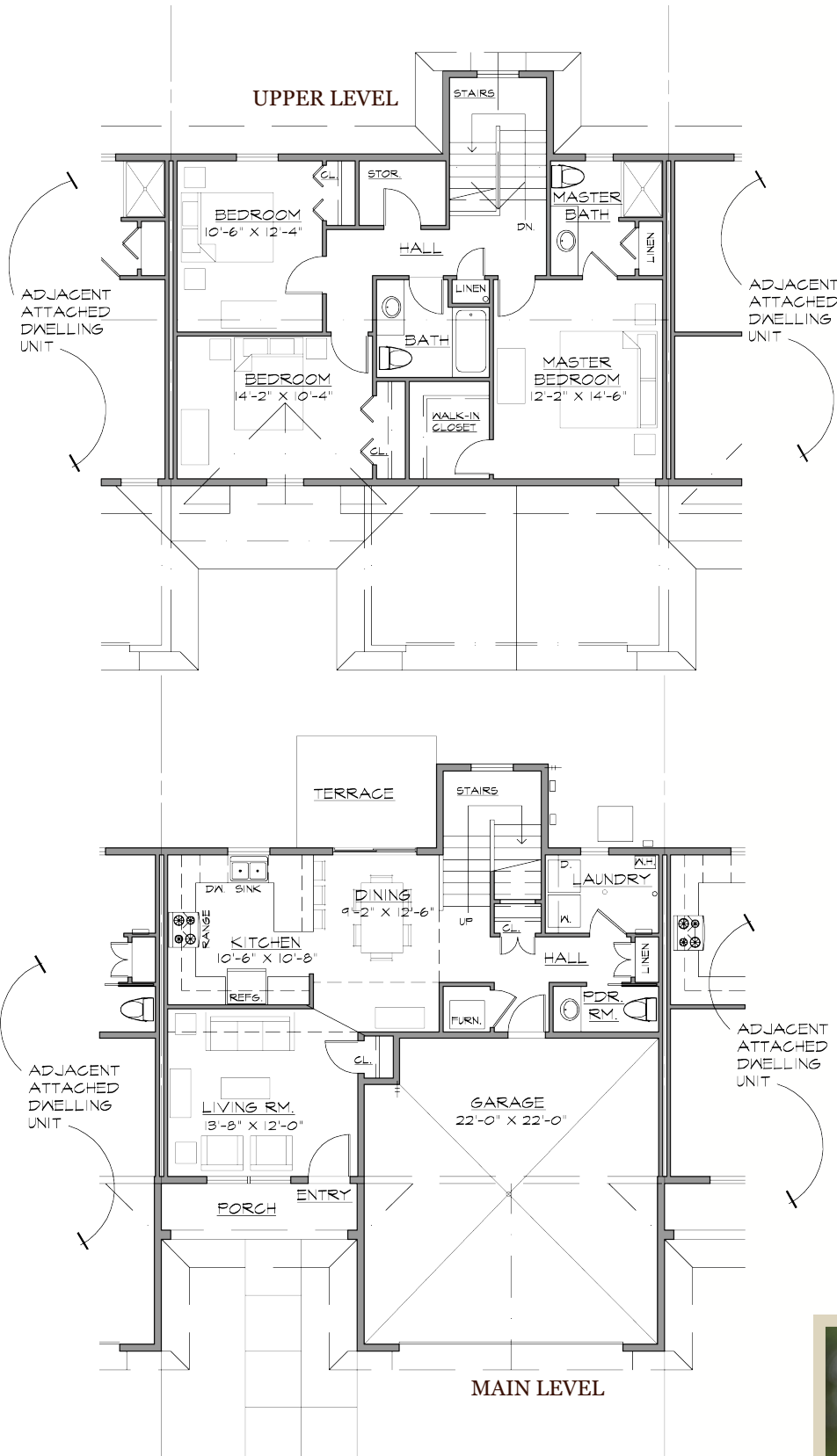


**One story, two bedroom
with attached garage
1,176 Square Feet of Living Space**

High quality sound insulation wall system

Fully landscaped grounds

Many restaurants within walking distance



**Two-story, three bedroom
with attached garage
1,611 Square Feet of Living Space**



NORTH CREEK TOWNHOMES

At Harlow Farms



For more information, contact

Nicole Weldum
 Property Manager
 North Creek Townhomes, LLC
 501 Horizons Drive
 Marquette, MI 49855
 (906) 362-8334
nvweldum@swadleydevelopment.com