

# **A.N.S. MACHINE, LLC**

**AS9100 and ISO 9001**

**Precision Lathe and Millwork**

**940 Pine Street ♦ P. O. Box 87 ♦ Peshtigo, WI 54157**

**715-582-0461 Phone 715-582-2901 Fax**

**[www.ansmachine.com](http://www.ansmachine.com)**



**Contact Us**

**For Your Precision Parts Today**

**Jeff Hartwig – President**

**[jeff@ansmachine.com](mailto:jeff@ansmachine.com)**

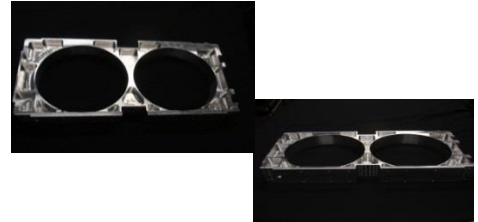
# **A.N.S. MACHINE, LLC**

A.N.S. Machine, LLC is a progressive machining source specializing in CNC turning and milling with the latest state-of-the-art equipment.

Our objective is to provide our customers with a single source of the highest quality machined parts.

## **A.N.S. Machine, LLC Advantages**

- Competitive Pricing
- Short Lead Times
- Complex Machining
- Complete Assembly and Secondary Operations



### **SERVICES OFFERED**

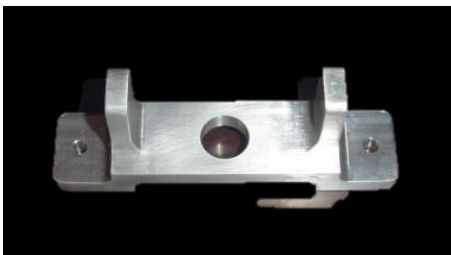
- ASSEMBLY
- CNC MACHINING
- FIXTURES
- JIGS
- PRODUCTION MACHINING

### **MATERIALS**

- ALUMINUM
- BRASS
- BRONZE
- CAST IRON
- COPPER
- EXOTIC MATERIALS
- FOAM
- PLASTIC
- STAINLESS STEEL

### **PRODUCTS MACHINED**

- BAR STOCK
- CASTINGS
- EXTRUSIONS
- FORGINGS
- PLATE STOCK





## **EQUIPMENT LIST:**

### **MILLING**

**(1) HWACHEON 5 AXIS MACHINING CENTER  
WITH 8 PIECE PALLET CHANGER**

**(3) CNC MACHINING CENTERS  
YCM 1020A  
TRAVELS: X= 40"; Y= 17"; Z= 15"**

**(2) CNC MACHINING CENTERS  
YCM 1250  
TRAVELS: X= 50"; Y= 20"; Z= 18"**

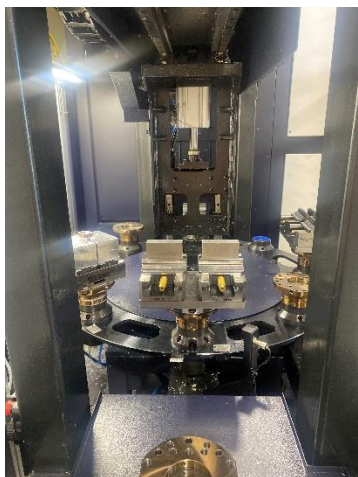
**(1) COLLABORATIVE UR ROBOT  
28 POUND PAYLOAD  
50" REACH  
FOR UNATTENDED MACHINING**

**(1) CHEVALIER MACHINING CENTER  
QP2040-1  
TRAVELS: X= 40"; Y= 20"; Z= 18"**

**(1) TWINHORN MACHINING CENTER  
1010  
TRAVELS: X= 40" Y= 17"; Z= 17"**

**(1) SUPER MAX CNC MILL  
FX102A DUAL PALLET CHANGER  
TRAVELS: X= 30"; Y= 15"; Z= 15"**

**(1) YCM-40 MACHINING CENTER  
TRAVELS: X= 30"; Y= 12"; Z= 10"**



## LATHE

(1) YANG ML CNC TURNING CENTER  
MAXIMUM TURNING DIAMETER 10"  
DISTANCE BETWEEN CENTERS 24"  
2.0 THROUGH SPINDLE  
WITH BAR FEEDER



(1) YCM GT-200 LATHE

(1) FEELER HIGH ACCURACY LATHE

## MANUAL MACHINES

(1) K.O. LEE SURFACE GRINDER

(1) BRIDGEPORT VERTICAL MILL  
TRAVELS: X= 34"; Y= 18"; Z= 6"

(1) AMADA AUTOMATIC SAW

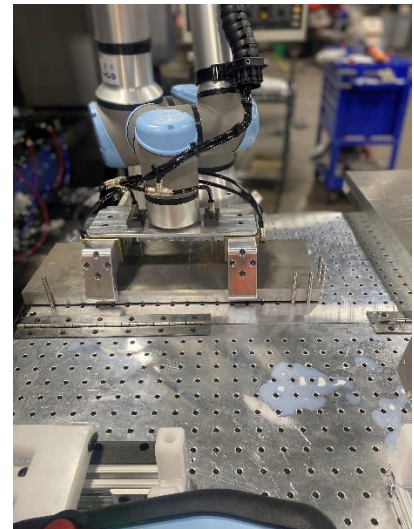
(1) ROUND TUBE FINISHING MACHINE  
.5" – 4" MAX DIAMETER



## INSPECTION

FARO ARM CMM

KEYENCE VISUAL INSTANT MEASURING MACHINE





A.N.S. Machine, LLC provides in-house machining for primary and secondary operations. Our services extend to a variety of industries. In-house inspection following machining assures compliance to all required standards and specifications.

A.N.S. Machine, LLC has achieved AS9100 and ISO 9001 certification.

The combination of our highly skilled associates and state-of-the-art equipment ensures our service will be to your satisfaction. We take pride in meeting deadlines and exercise urgency when requested. Conveniently located in the Peshtigo Industrial Park.

