

Designed for the heavy duty truck and trailer industry

Includes two industry-proven brake-style relay valves integrated into a single unit for compactness and ease of installation

Excellent flow capability for rapid axle actuation

Optional control solenoid for electric control

**Technical data**

**Operating pressure:**

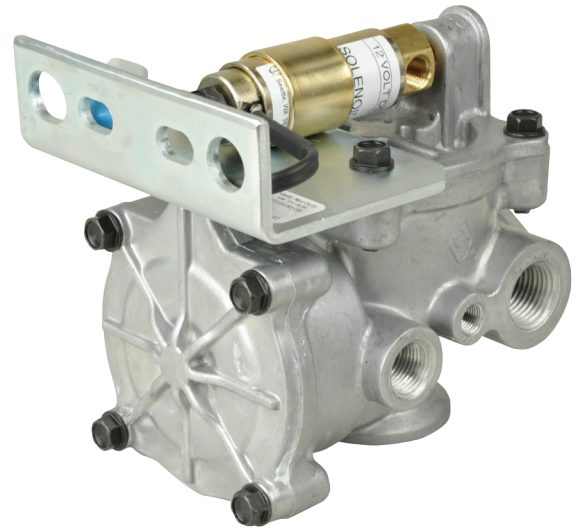
30 to 120 psi

**Operating temperature:**

-40°F to +190°F max.  
-40°C to +87.7°C max.

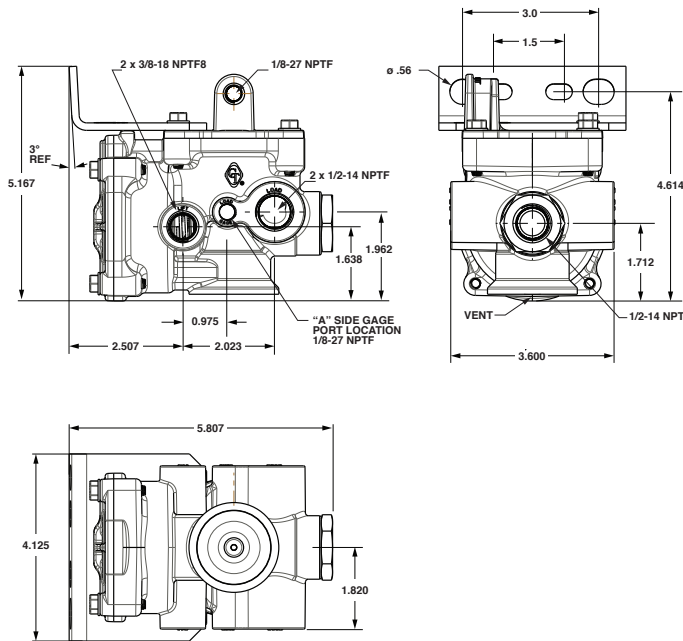
**Material:**

Cast aluminum body with thermoplastic pistons and low temperature nitrile seals

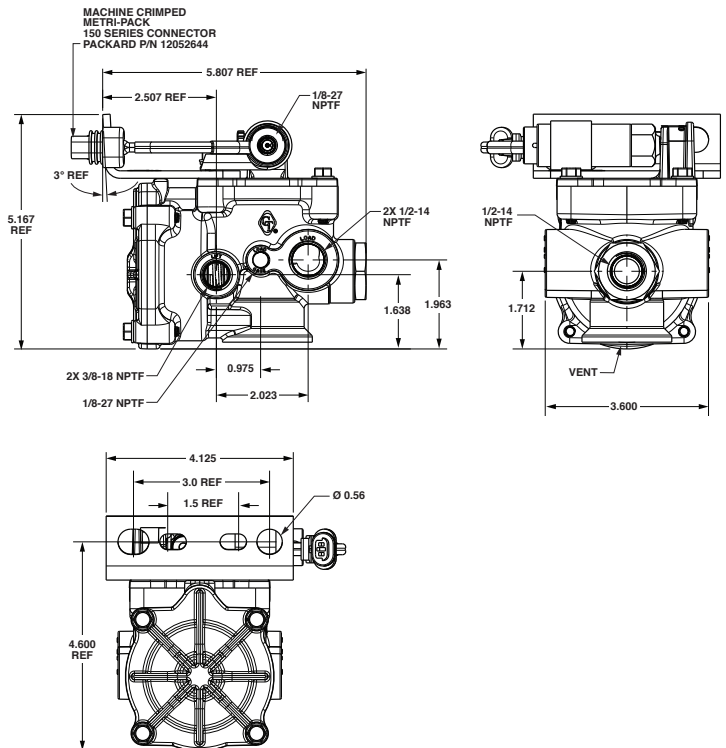


**Dimensions (Inches)**

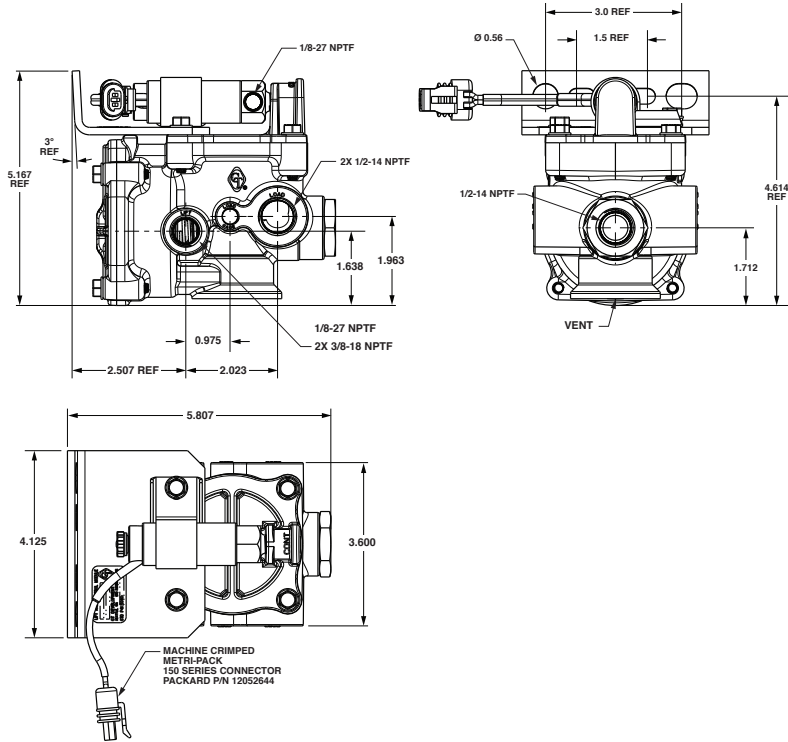
5040-111-01C



5040-211-01C



5040-311-01C



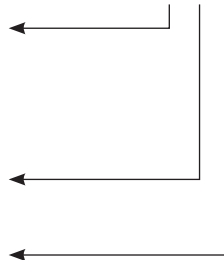
**Models**

Model	Valve Type	Electrical Connection
5040-111-01C	● Air Actuation	N/A
5040-211-01C	● N/O Solenoid	Metri-Pack 150 Series 2-way connector
5040-311-01C	● N/C Solenoid	Metri-Pack 150 Series 2-way connector

**Part Number**

5040-\* 1 1-01C

Valve Type	Substitute
Air Actuation	1
N/O Solenoid	2
N/C Solenoid	3
Check Valve	Substitute
Check Valve	1
Gage Port	Substitute
'A' side gage port	1



- In stock
- ◆ Please call 1.800.710.7823 for availability