



CUSTOMER INFORMATION

Name:

Email Address:

Phone Number:

Site Address:

CUSTOMER REQUIREMENTS

Building Type: Gable: Skillion: Carport: Awning:

Building Length: metres

Building Width: metres

Building Height: metres

Awnings (where applicable):

Awning Length: metres

Awning Width: metres

Awning Height: metres

Awning To Go On Which Side(s):

Front

Back

Left

Right

Is installation required or do you require kit only? Installation / Kit Only

If installation is required, do you also require a concrete slab or pier footings to be laid?

Slab Pier Footings I'll Do The Concrete

Roller Doors: 1 2 3 4 Other:

Roller Door Size (where applicable):

Width: metres Height: metres

Roller Door Motor Required (where applicable): Yes No (Chain Pull)

Windows: 1 2 3 4 Other:

PA Doors: 1 2 3 4 Other:

Sliding Doors: 1 2 3 4 Other:

Eaves: Front Back Left Right

Mezzanine Floor: Yes No

Insulation: Roof Walls No Insulation Other:

If you're feeling creative, feel free to include any diagrams that you think will help us to begin work on your required design:

Your roof is protecting your most precious investments, your home and your family. You can be confident knowing COLORBOND® steel is versatile, lightweight, durable, and capable of meeting the changing needs of your lifestyle.



Whether you live close to the coast or you're choosing a colour with energy-efficiency in mind, COLORBOND® steel can meet the needs that your home demands. Simply visit colorbond.com/create to determine the most suitable COLORBOND® steel choices for your home.

LEGEND

⓪ Also available in COLORBOND® Ultra steel for coastal and industrial environments. All other colours are available in COLORBOND® Ultra steel on request, please speak with your supplier.

Ⓛ Also available in COLORBOND® Stainless steel for severe coastal and industrial environments. Please speak to your supplier for more information regarding availability.

For further details on the legend, please refer to the back page.

CLASSIC colour range¹



CLASSIC CREAM™
SA = 0.32. BCA = L



PAPERBARK®
SA = 0.42. BCA = M



PALE EUCALYPT®
SA = 0.60. BCA = M



WOODLAND GREY® Ⓛ
SA = 0.71. BCA = D



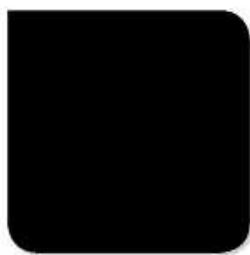
DEEP OCEAN® Ⓛ
SA = 0.75. BCA = D



COTTAGE GREEN®
SA = 0.75. BCA = D



MANOR RED®
SA = 0.69. BCA = D



NIGHT SKY®
SA = 0.96. BCA = D

CONTEMPORARY colour range¹



SURFMIST® ⓁⓁ
SA = 0.32. BCA = L



EVENING HAZE®
SA = 0.43. BCA = M



SHALE GREY™
SA = 0.43. BCA = M



DUNE® ⓁⓁ
SA = 0.47. BCA = M



COVE™
SA = 0.54. BCA = M



WINDSPRAY® ⓁⓁ
SA = 0.58. BCA = M



GULLY™
SA = 0.63. BCA = D



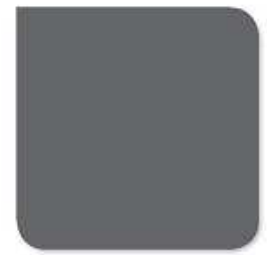
MANGROVE™
SA = 0.64. BCA = D



WALLABY™ Ⓛ
SA = 0.64. BCA = D



JASPER®
SA = 0.68. BCA = D



BASALT™
SA = 0.69. BCA = D



IRONSTONE®
SA = 0.74. BCA = D



TERRAIN®
SA = 0.69. BCA = D



MONUMENT® Ⓛ
SA = 0.73. BCA = D

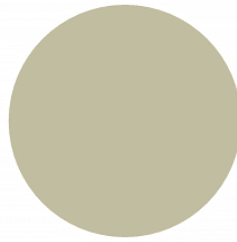
Colorbond®



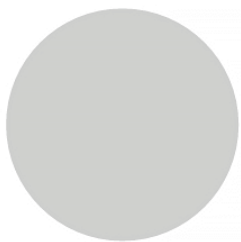
Dover White™
Classic finish
SA = 0.28



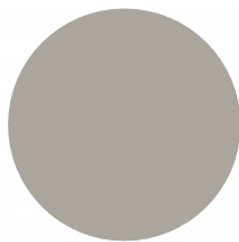
Surfmist®
Classic finish
SA = 0.33



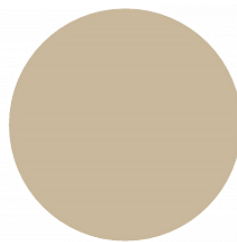
Evening Haze®
Classic finish
SA = 0.43



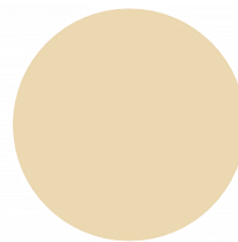
Southerly®
Classic finish
SA = 0.40



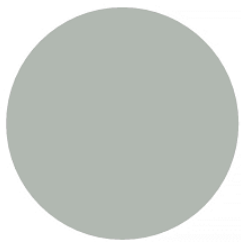
Dune®
Classic finish
SA = 0.48



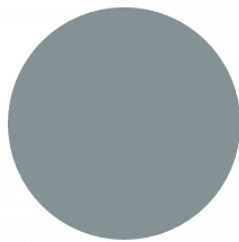
Paperbark®
Classic finish
SA = 0.43



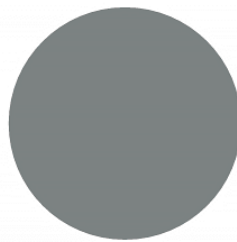
Classic Cream™
Classic finish
SA = 0.33



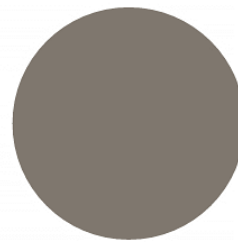
Shale Grey™
Classic finish
SA = 0.44



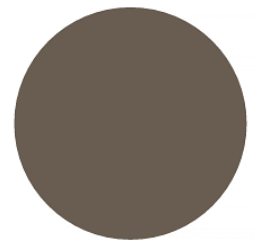
Bluegum®
Classic finish
SA = 0.57



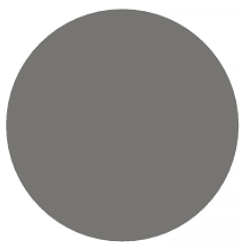
Windspray®
Classic finish
SA = 0.60



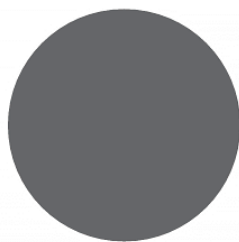
Gully®
Classic finish
SA = 0.64



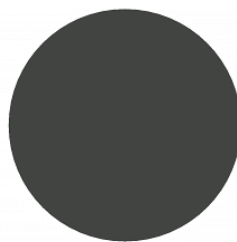
Jasper®
Classic finish
SA = 0.67



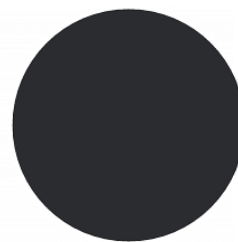
Wallaby®
Classic finish
SA = 0.64



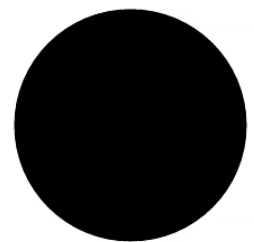
Basalt®
Classic finish
SA = 0.67



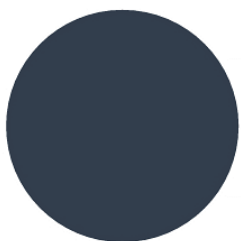
Woodland Grey®
Classic finish
SA = 0.70



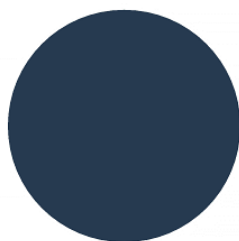
Monument®
Classic finish
SA = 0.73



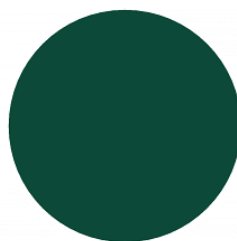
Night Sky®
Classic finish
SA = 0.95



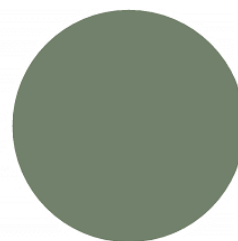
Ironstone®
Classic finish
SA = 0.73



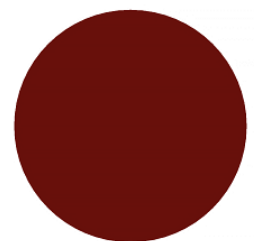
Deep Ocean®
Classic finish
SA = 0.74



Cottage Green®
Classic finish
SA = 0.73



Pale Eucalypt®
Classic finish
SA = 0.60



Manor Red®
Classic finish
SA = 0.70