



1910

Pope Mfg. Co.

chemical car, hose wagon

CT Firemen's Hist. Soc. Collection

Hose No.3

South Manchester Fire Dept.

1910-unk

Co. #3 was the first to get a motorized piece of apparatus. An Automobile Pope-Hartford Combination Hose and Chemical truck was delivered February 3, 1910.

COMPILED BY CONNECTICUT FIREMEN'S HISTORICAL SOCIETY, MANCHESTER, CT



1912

White Motor Co.

White Motor Co.

hose wagon

CT Firemen's Hist. Soc. Collection

Hose No.2

South Manchester Fire Dept.

1912-unk

COMPILED BY CONNECTICUT FIREMEN'S HISTORICAL SOCIETY, MANCHESTER, CT



1912

Seagrave Corp.

chemical car, hose wagon

chem

CT Firemen's Hist. Soc. Collection

Hose No.1

South Manchester Fire Dept.

1913-unk

Preserved - Museum - CT Firemen's Hist

as of 2021

1947 photo suggests it was still in service.

COMPILED BY CONNECTICUT FIREMEN'S HISTORICAL SOCIETY, MANCHESTER, CT



1912

Seagrave Corp.

city service, chemical

chem

CT Firemen's Hist. Soc. Collection

Ladder 1

South Manchester Fire Dept.

1913-1926

Ladder 4

Unknown reassignment

1926

Sold

1954

National Fire Museum, Newton, Mass

Assume that it was reserve when '26 Seagrave came in. Had been preserved. Used for parts to restore 1912 Seagrave chemical. Rest to be given to A.Swift, Maine. Painted 12-6-1912

COMPILED BY CONNECTICUT FIREMEN'S HISTORICAL SOCIETY, MANCHESTER, CT



1914

American LaFrance

pumper

750 gpm

CT Firemen's Hist. Soc. Collection

Eng 4

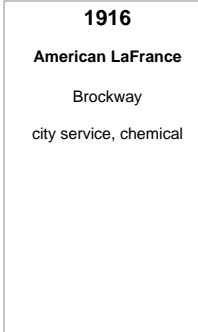
South Manchester Fire Dept.

1914-1942

truck on right

Reg #515 ship 5-23-1914 Co. #4 was the first company to get a motorized pumping engine. Cost \$8,500. The truck trailing is 1912 Seagrave city service

COMPILED BY CONNECTICUT FIREMEN'S HISTORICAL SOCIETY, MANCHESTER, CT



1916

American LaFrance

Brockway

city service, chemical

photo needed

photo needed

Ladder 2

South Manchester Fire Dept.

1916-1952

Reg #1210 ship 7-13-1916

COMPILED BY CONNECTICUT FIREMEN'S HISTORICAL SOCIETY, MANCHESTER, CT



CT Firemen's Hist. Soc. Collection

1918
American LaFrance
 Brockway
 pumper, tank, hose wagon
 400 gpm

CT Firemen's Hist. Soc. Collection

Eng 2 South Manchester Fire Dept. **1918-1950**
 Reserve as of **1950**

Reg #1932 ship 4-13-1918 Junior pump

COMPILED BY CONNECTICUT FIREMEN'S HISTORICAL SOCIETY, MANCHESTER, CT



CT Firemen's Hist. Soc. Collection

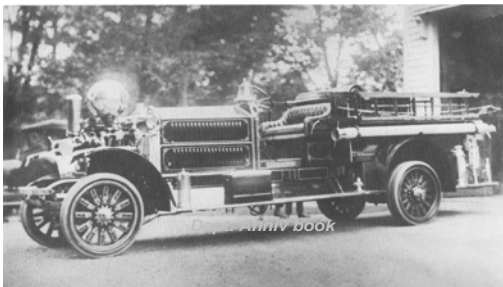
1920
American LaFrance
 Brockway
 pumper, tank, hose wagon
 400 gpm

CT Firemen's Hist. Soc. Collection

Eng 3 South Manchester Fire Dept. **1920-1945**
 Reserve as of **1950**
 Still there **1961**

Reg #2859 ship 3-31-1920 Junior pump
 Another HC article says it was a 1917.

COMPILED BY CONNECTICUT FIREMEN'S HISTORICAL SOCIETY, MANCHESTER, CT



Dept. Anniv book

This 1921 Ahrens-Fox pumping engine was purchased by Company No. 1, the last of the four fire companies to buy such a piece of equipment. At a cost of \$13,100, it was the best pumper available at the time and is, today, a much sought-after collector's piece. The large, nose-packed ball at the front absorbed the pressure surges produced by the piston pump. The fact that the ball has no seam makes this piece rare. The pumper was restored for Manchester 2 (reaccredited) and is currently residing in the possession of the Town of Manchester Fire Department.

Dept. Anniv book

Eng 1 South Manchester Fire Dept. **1921-1951**
 Reserve as of **1964**
 Preserved - Museum - CT Firemen's Hist **as of 2021**

Del. 5-4-1921
 Co. #1 was the last company to get a pumping engine.

COMPILED BY CONNECTICUT FIREMEN'S HISTORICAL SOCIETY, MANCHESTER, CT



CT Firemen's Hist. Soc. Collection

1926
Seagrave Corp.
 city service, chemical
 2-35 chem

CT Firemen's Hist. Soc. Collection

Ladder 1 South Manchester Fire Dept. **1926-1967**
 Sold **1967**
 Preserved - Private - Out of state **as of 2013**

painted 7-23-1926

COMPILED BY CONNECTICUT FIREMEN'S HISTORICAL SOCIETY, MANCHESTER, CT



CT Firemen's Hist. Soc. Collection

1942
American LaFrance 600 Series
 pumper
 750 gpm
 100 gal tank

CT Firemen's Hist. Soc. Collection

Eng 4 South Manchester Fire Dept. **1942-1956**
 Eng 4 Manchester Fire Dept. **1956-1964**
 Preserved - Private - Lawrence Lotard **as of 1993**

Reg #L-1673 ship 6-30-1942. Overhead ladder rack.

COMPILED BY CONNECTICUT FIREMEN'S HISTORICAL SOCIETY, MANCHESTER, CT



Mark Redman, photographer

1945
American LaFrance 600 Series
 pumper
 750 gpm
 150 gal tank

Mark Redman, photographer

Eng 3 South Manchester Fire Dept. **1945-1956**
 Manchester Fire Dept. **1956-1966**
 with department **1983**

ship 10-23-1945

COMPILED BY CONNECTICUT FIREMEN'S HISTORICAL SOCIETY, MANCHESTER, CT



1950
American LaFrance 700 Series
 pumper
 750 gpm
 250 gal tank

Frank Wegloski, photographer

Eng 2 South Manchester Fire Dept. **1950-1956**
 Eng 2,4 Manchester Fire Dept. **1956-1979**

Reg #L-4053 ship 3-17-1950 775-PJC
 E4 in 1964

COMPILED BY CONNECTICUT FIREMEN'S HISTORICAL SOCIETY, MANCHESTER, CT



1951
American LaFrance 700 Series
 pumper
 750 gpm
 250 gal tank

Mike Bakunis, photographer

Eng 1 South Manchester Fire Dept. **1951-1956**
 Manchester Fire Dept. **1956-1971**
 Reserve **1971**
 Scrapped **1979**

Reg #L-4372 ship 9-20-1951 775-PGC
 this truck is not on ARN 11-76 list.
 The cab and motor were used on the '52 ALF ladder after it was damaged in accident.

COMPILED BY CONNECTICUT FIREMEN'S HISTORICAL SOCIETY, MANCHESTER, CT



1952
American LaFrance 700 Series
 aerial
 250 gpm
 150 gal tank
 mid-mount - 75' ALF
original configuration

Mark Redman, photographer

Ladder 1 South Manchester Fire Dept. **1952-1956**
 Refurb after accident **1982**
 Ladder 1 Manchester Fire Dept. **1956-1999**

Reg #L-4542 ship 5-12-1952 7-75-AJO. With Hose Co. 4. The cab and motor from '51 ALF pumper were used after this truck was damaged in accident.

COMPILED BY CONNECTICUT FIREMEN'S HISTORICAL SOCIETY, MANCHESTER, CT



1959
American LaFrance 900 Series
 pumper
 1000 gpm
 750 gal tank

Mike Bakunis, photographer

unk Manchester Fire Dept. **1959-1976**
 Eng 5 Reassigned **1976-1990**

Charter Oak Hose Co. 5, reformed as co. in 1976

COMPILED BY CONNECTICUT FIREMEN'S HISTORICAL SOCIETY, MANCHESTER, CT



1964
American LaFrance 900 Series
 pumper
 750 gpm
 500 gal tank
as reserve

Mike Bakunis, photographer

Eng 2 Manchester Fire Dept. **1964-1981**
 Eng 7 Reserve **1981**

COMPILED BY CONNECTICUT FIREMEN'S HISTORICAL SOCIETY, MANCHESTER, CT



1966
American LaFrance 900 Series
 pumper
 750 gpm
 500 gal tank

John W. Turner, photographer

Eng 3 Manchester Fire Dept. **1966-1990**
 Eng 7 Reserve **1990**

HC 11-21-1965 says 750 gpm ordered and assigned to Central HQ.

COMPILED BY CONNECTICUT FIREMEN'S HISTORICAL SOCIETY, MANCHESTER, CT



Mike Bakunis, photographer

1967
American LaFrance 900 Series

aerial

mid-mount - 100' ALF

post-refurb

Mike Bakunis, photographer

Ladder 2 Manchester Fire Dept. **1967-1999**
Refurb - Century Cab **1987**

COMPILED BY CONNECTICUT FIREMEN'S HISTORICAL SOCIETY, MANCHESTER, CT



Frank Wegloski, photographer

1971
American LaFrance 1000 Series

pumper

1500 gpm
500 gal tank

Frank Wegloski, photographer

Eng 1 Manchester Fire Dept. **1971-1990**
Refurb by Middleboro **1990**
Eng 6 Reserve **1990-1999**
Preserved - O/S - Andy McConnell (OH) **as of 2018**

COMPILED BY CONNECTICUT FIREMEN'S HISTORICAL SOCIETY, MANCHESTER, CT



Frank Wegloski, photographer

1979
American LaFrance Century Series

pumper

1500 gpm
500 gal tank

Frank Wegloski, photographer

Eng 4 Manchester Fire Dept. **1979-2006**

COMPILED BY CONNECTICUT FIREMEN'S HISTORICAL SOCIETY, MANCHESTER, CT



Mike Bakunis, photographer

1981
American LaFrance Century Series

pumper

1500 gpm
750 gal tank

Mike Bakunis, photographer

Eng 2 Manchester Fire Dept. **1981-2006**

foam

COMPILED BY CONNECTICUT FIREMEN'S HISTORICAL SOCIETY, MANCHESTER, CT



John W. Turner, photographer

1986
Ranger Div.-American Modular
Ford F
rescue

John W. Turner, photographer

Res 1 Manchester Fire Dept. **1986-2000**

1977 Ranger body

COMPILED BY CONNECTICUT FIREMEN'S HISTORICAL SOCIETY, MANCHESTER, CT



Mike Bakunis, photographer

1989
Kersey/American LaFrance Century 2000
aerial

1500 gpm
500 gal tank
rear-mount - 75'

Mike Bakunis, photographer

Eng 5 Manchester Fire Dept. **1989-1998**
Lad 2 Reassigned **1998-1999**
Reserve

Was this here longer?

COMPILED BY CONNECTICUT FIREMEN'S HISTORICAL SOCIETY, MANCHESTER, CT



Mike Bakunis, photographer

Eng 5 Manchester Fire Dept. **1989-1998**
 Lad 2 Reassigned **1998-1999**
 Reserve

Was this here longer?

COMPILED BY CONNECTICUT FIREMEN'S HISTORICAL SOCIETY, MANCHESTER, CT

1989
 Kersey/American LaFrance
 Century 2000
 aerial
 1500 gpm
 500 gal tank
 rear-mount - 75'



Mike Bakunis, photographer

Eng 1 Manchester Fire Dept. **1990-1999**
 Eng 8 - Rsv Reserve **1999-2006**

COMPILED BY CONNECTICUT FIREMEN'S HISTORICAL SOCIETY, MANCHESTER, CT

1990
 Kersey/American LaFrance
 Century 2000
 pumper
 1500 gpm
 500 gal tank



Ed Harvey, photographer

Eng 3 Manchester Fire Dept. **1990-2012**
 Eng 7 - Rsv Manchester Fire Department - reserve **2012**

COMPILED BY CONNECTICUT FIREMEN'S HISTORICAL SOCIETY, MANCHESTER, CT

1990
 Kersey/American LaFrance
 Century 2000
 pumper
 1500 gpm
 500 gal tank



Patrick Dooley, photographer

Quint 1 Manchester Fire Dept. **1999-2012**
 Truck 6 - Resv Reserve **2012**

COMPILED BY CONNECTICUT FIREMEN'S HISTORICAL SOCIETY, MANCHESTER, CT

1999
 Pierce Mfg. Inc. Dash
 aerial
 2000 gpm
 400 gal tank
 rear-mount - 105' Smeal



Patrick Dooley, photographer

Eng 1 Manchester Fire Dept. **1999-2002**
 Eng 5 Reassigned **2002-2012**
 Eng 7 - Rsv Reserve **2012-2016**

COMPILED BY CONNECTICUT FIREMEN'S HISTORICAL SOCIETY, MANCHESTER, CT

1999
 Pierce Mfg. Inc. Saber
 pumper
 1500 gpm
 500 gal tank



Mike Brinius, photographer

Quint 3 Manchester Fire Dept. **1999-2012**
 Truck 2 Reassigned **2012-2018**

COMPILED BY CONNECTICUT FIREMEN'S HISTORICAL SOCIETY, MANCHESTER, CT

1999
 Pierce Mfg. Inc. Dash
 aerial
 2000 gpm
 400 gal tank
 rear-mount - 105' Smeal

Or 1500 pump



Mike Bakunis, photographer

2000

Three-D Mfg. (3D)

American LaFrance Eagle

rescue

Res 1 Manchester Fire Dept.
Out of state - Canada

2000-unk

not replaced

COMPILED BY CONNECTICUT FIREMEN'S HISTORICAL SOCIETY, MANCHESTER, CT



Patrick Dooley, photographer

2006

American LaFrance Metropolitan

pumper

1500 gpm
500 gal tank

Eng 2 Manchester Fire Dept.
Eng 5 Reassigned
Eng 8 Reserve

2006-2012
2012-2016
2016-

COMPILED BY CONNECTICUT FIREMEN'S HISTORICAL SOCIETY, MANCHESTER, CT



Zack Bowden, photographer

2006

American LaFrance Metropolitan

pumper

1500 gpm
500 gal tank

Eng 4 Manchester Fire Dept.
Eng 7 Reserve

2006-2017
2017-

COMPILED BY CONNECTICUT FIREMEN'S HISTORICAL SOCIETY, MANCHESTER, CT



Scott Leslie, photographer

2012

Sutphen Monarch

pumper

2000 gpm
500 gal tank

Eng 1 Manchester Fire Dept.

2012-

Del 4-3-2012

COMPILED BY CONNECTICUT FIREMEN'S HISTORICAL SOCIETY, MANCHESTER, CT



Patrick Dooley, photographer

2012

Sutphen Monarch

pumper

2000 gpm
600 gal tank

Eng 3 Manchester Fire Dept.

2012-

Del 4-3-2012

COMPILED BY CONNECTICUT FIREMEN'S HISTORICAL SOCIETY, MANCHESTER, CT



Patrick Dooley, photographer

2016

Marion Body Works

Spartan Gladiator

pumper

2000 gpm
500 gal tank

Eng 5 Manchester Fire Dept.

2016-

COMPILED BY CONNECTICUT FIREMEN'S HISTORICAL SOCIETY, MANCHESTER, CT



Mike Brinius, photographer

Eng 4

Manchester Fire Dept.

2017-

2017
Marion Body Works
Spartan Gladiator
pumper
2000 gpm
500 gal tank

COMPILED BY CONNECTICUT FIREMEN'S HISTORICAL SOCIETY, MANCHESTER, CT



Patrick Dooley, photographer

Truck 2

Manchester Fire Dept.

2018
Pierce Mfg. Inc. Velocity
aerial
rear-mount - 105' Pierce

2018-

COMPILED BY CONNECTICUT FIREMEN'S HISTORICAL SOCIETY, MANCHESTER, CT