

West Haven Fire Dept., West Haven, CT (1888-); Eng & Hose Co.(1888); North End Hose(1895); Savin Rock Hose (1895); West Haven H&L; Stevens Hgts.



1911
Knox Automobile Co.
 pumper, chemical
 600 gpm
 chem
 serial

This photo is E1.

Eng 3 North End Hose Co.No.3, W Haven **1911-unk**

COMPILED BY CONNECTICUT FIREMEN'S HISTORICAL SOCIETY, MANCHESTER, CT



1911
Knox Automobile Co.
 tractor - two axle
 serial

to pull aerial apparatus

Lad 1 Hook & Ladder Co.No.1 **1911-unk**

COMPILED BY CONNECTICUT FIREMEN'S HISTORICAL SOCIETY, MANCHESTER, CT



1911
Knox Automobile Co.
 pumper, chemical
 600 gpm
 chem
 serial

This photo is E1

Eng 4 Savin Rock Hose Co.No.4, W Haven **1911-unk**

COMPILED BY CONNECTICUT FIREMEN'S HISTORICAL SOCIETY, MANCHESTER, CT



1911
Knox Automobile Co.
 pumper, chemical
 600 gpm
 chem
 serial

Eng 1 Engine & Hose Co.No.1, W Haven
 Likely junked **1911-unk**

COMPILED BY CONNECTICUT FIREMEN'S HISTORICAL SOCIETY, MANCHESTER, CT



1916
Maxim Motor Co.
 chemical car, hose wagon
 chem
 serial MX 0479

Orange Village
 Maxim list says 1917

Eng 3 North End Hose No. 3, West Haven **1916-1935**

COMPILED BY CONNECTICUT FIREMEN'S HISTORICAL SOCIETY, MANCHESTER, CT



1917
Seagrave Corp.
 city service
 chem
 serial

Town of Orange to 1921 when West Haven was formed.
 Painted 11-3-1917

Lad 1 West Haven Fire Dept. **1917-unk**
 Lad 2

COMPILED BY CONNECTICUT FIREMEN'S HISTORICAL SOCIETY, MANCHESTER, CT

West Haven Fire Dept., West Haven, CT (1888-); Eng & Hose Co.(1888); North End Hose(1895); Savin Rock Hose (1895); West Haven H&L; Stevens Hgts.



1918
Seagrave Corp.
 pumper
 750 gpm
taken 6/1951
 serial SE 18564

Painted 1-5-1918. List identifies this going to E4. And, AR had this at E4. (E3 marking?)
 The cowl is of round-hood era with grouped louvers and a longer length which didn't appear until 1921. NH Register article says reconditioned in 1932 - new hood put on? Chain-drive was offered

Eng 4, Eng 3 Savin Rock Hose Co.No.4 **1918-1952**
 Avon Fire Dept. **1952-unk**

COMPILED BY CONNECTICUT FIREMEN'S HISTORICAL SOCIETY, MANCHESTER, CT



1920
Obenchain-Boyer
 Ford Model TT
 pumper
 serial unk

West Haven Fire Dept. **1920-unk**

Preserved - Private - Bill Killen **as of 2023**

COMPILED BY CONNECTICUT FIREMEN'S HISTORICAL SOCIETY, MANCHESTER, CT



1923
American LaFrance
 Brockway
 chemical car, hose wagon
 2-35 chem
 serial ALF B-0142

Reg #B-142 36 DT-Comb
 I matched this to photo based on 2 chem tanks.
 See McCall ALF book p.37

Eng 1 West Haven Fire Dept. **1923-1947**

Preserved - CT Dept - Lyme **as of 2003**

COMPILED BY CONNECTICUT FIREMEN'S HISTORICAL SOCIETY, MANCHESTER, CT



1923
American LaFrance
 Brockway
 chemical car, hose wagon
 chem
 serial ALF B-0152

Reg #B-152 36 Comb
 ALF list says only that this was purchased by West Haven.

West Haven Fire Dept. **1923-unk**

COMPILED BY CONNECTICUT FIREMEN'S HISTORICAL SOCIETY, MANCHESTER, CT



1926
Seagrave Corp.
 city service
 serial

Painted 11-4-1926
 Only reference is on Seagrave paint list.
 Noted as a "Service B"

Lad 2 West Haven Fire Dept. **1926-1939**

COMPILED BY CONNECTICUT FIREMEN'S HISTORICAL SOCIETY, MANCHESTER, CT



1927
American LaFrance
 Brockway
 pumper
 400 gpm
 serial ALF B-0481

Reg #B-481 shipped 2-1927 63 PWT

as of 1927

COMPILED BY CONNECTICUT FIREMEN'S HISTORICAL SOCIETY, MANCHESTER, CT

West Haven Fire Dept., West Haven, CT (1888-); Eng & Hose Co.(1888); North End Hose(1895); Savin Rock Hose (1895); West Haven H&L; Stevens Hgts.



1930
Seagrave Corp.
 pumper
 350 gpm
 serial

Painted 7-21-1930
 Only reference is on Seagrave paint list.
 Unknown if new to this Co.

Eng 5 Stevens Hgts

1930-unk

COMPILED BY CONNECTICUT FIREMEN'S HISTORICAL SOCIETY, MANCHESTER, CT



White Motor Co.
 pumper
 serial

West Haven Fire Dept.

unk

COMPILED BY CONNECTICUT FIREMEN'S HISTORICAL SOCIETY, MANCHESTER, CT



1935
Mack Trucks Early B Series
 pumper
 500 gpm
 250 gal tank
 serial unk

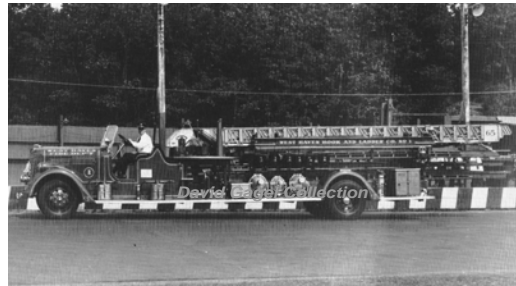
Eng 3 North End Hose No. 3, West Haven

1935-1959

Preserved - Private

as of 2021

COMPILED BY CONNECTICUT FIREMEN'S HISTORICAL SOCIETY, MANCHESTER, CT



1939
Peter Pirsch & Sons
 aerial
 mid-mount - 65' Pirsch
 serial

Lad 1 Hook & Ladder Co.No.1, West Haven

1939-1959

COMPILED BY CONNECTICUT FIREMEN'S HISTORICAL SOCIETY, MANCHESTER, CT



1942
Maxim Motor Co.
 Diamond T
 pumper
 500 gpm
 300 gal tank
 serial no

Repainted red
 West Haven Center Dist.

Res 1 West Haven Fire Dept.
 Eng 5 Stevens Heights Fire Dept.

1942-1952
 1952-unk

x

COMPILED BY CONNECTICUT FIREMEN'S HISTORICAL SOCIETY, MANCHESTER, CT



1946
Seagrave Corp.
 pumper
 750 gpm
 500 gal tank
 serial

Painted 7-8-1946

Eng 4 West Haven Fire Dept.
 Converted to deluge unit
 In service as of

1946-1973
 1973?
 1983

COMPILED BY CONNECTICUT FIREMEN'S HISTORICAL SOCIETY, MANCHESTER, CT

West Haven Fire Dept., West Haven, CT (1888-); Eng & Hose Co.(1888); North End Hose(1895); Savin Rock Hose (1895); West Haven H&L; Stevens Hgts.



1952
Maxim Motor Co.
 Diamond T
 city service, booster pump

 250 gpm
 100 gal tank

 serial

WH had 3 city service: Truck 1,26,33. 3rd photo is a 1974 rebuild of T26 that might have had a diff call sign prior to.

Lad 2 West Haven Fire Dept. **1952-1959**
 West Haven H&L Co., West Haven **1959-1974**
 Major Modification - see separate record

COMPILED BY CONNECTICUT FIREMEN'S HISTORICAL SOCIETY, MANCHESTER, CT



1952
Maxim Motor Co. 1417 Series

 pumper

 750 gpm
 500 gal tank

delivery photo
 serial MX 1824

Not listed ARN 5-1974; also not on UR 6-1976. See 5-10-1952 news article about new truck assigned to central station E1. Maxim list had del 4-29-1952. McKeon says E3 and 1953. Were there two? NH Register says 1918 Seagrave was replaced by 750 Maxim 5-28-1952.

Eng 1 West Haven Fire Dept. **1952-1978**
 Eng 3 volunteers **1978-1983**
 Eng 28 Reserve **1983-1987?**

COMPILED BY CONNECTICUT FIREMEN'S HISTORICAL SOCIETY, MANCHESTER, CT



1959
Maxim Motor Co. F-Model

 aerial

 250 gpm
 150 gal tank
 mid-mount - 75' Maxim

 serial MX 2195

Lad 1, 22 West Haven Fire Dept. **1959-1989**
 Ladder 3-7-2 Old Saybrook Fire Dept. **1991-unk**

 Preserved - Private

COMPILED BY CONNECTICUT FIREMEN'S HISTORICAL SOCIETY, MANCHESTER, CT



1959

 Chevrolet
 rescue, lighting

 serial

Emergency New Haven Fire Dept. **1959-unk**
 Car 29 West Haven Fire Dept. **unk**

COMPILED BY CONNECTICUT FIREMEN'S HISTORICAL SOCIETY, MANCHESTER, CT



1959
Maxim Motor Co. F-Model

 pumper

 750 gpm
 500 gal tank

taken 1982 pre-refurb
 serial MX 2191

Went to E1 for brief time - most of the new trucks did. Removed from service - 2007. Refurbished by Middleboro 1982. Not sure this went to E25 as it was at E23 as of 4-84. UR 6-1976 is E25. Photo of it also at Savin Rock - E4

Eng 1 West Haven Fire Dept. **1959**
 Eng 4 Refurb - added canopy, diesel **1982**
 Eng 23, Eng 25 North End Hose No. 3, West Haven **1983**

COMPILED BY CONNECTICUT FIREMEN'S HISTORICAL SOCIETY, MANCHESTER, CT



1964
Maxim Motor Co. F-Model

 pumper

 1000 gpm
 500 gal tank

taken 1981
 serial MX 2452

Delivered to E1 as most of the new trucks were.

Eng 1,2 West Haven Fire Dept. **1964-unk**
 Refurb by Middleboro **1985**
 Eng 23 Reassigned

COMPILED BY CONNECTICUT FIREMEN'S HISTORICAL SOCIETY, MANCHESTER, CT

West Haven Fire Dept., West Haven, CT (1888-); Eng & Hose Co.(1888); North End Hose(1895); Savin Rock Hose (1895); West Haven H&L; Stevens Hgts.



1959
Allied
Ford
tanker

2300 gal tank

serial

No listing in 5-1974. Why would they need this? UR 6-1976 has a 1952 tank truck.

Tanker 1 West Haven Fire Dept. as of 1973

COMPILED BY CONNECTICUT FIREMEN'S HISTORICAL SOCIETY, MANCHESTER, CT



1973
Hahn Motors

pumper

1500 gpm
500/1000

serial

Modified - 1000 gal tank added in 1992
Preserved - Private as of 2013

Eng 24 West Haven Fire Dept. 1973-1992
Eng 82 Bethany Fire Dept. 1992-unk
Preserved - Private - E260, Milford as of 2013

COMPILED BY CONNECTICUT FIREMEN'S HISTORICAL SOCIETY, MANCHESTER, CT



1973
Hahn Motors

pumper

1500 gpm
500 gal tank

serial

Refurb 1993. Info from ARN.

Eng 21 West Haven Fire Dept. 1973-1984
Eng 25 Reassigned 1984-1992
Dunbar Hill Fire Co., Hamden - Engine 8 1993-unk

COMPILED BY CONNECTICUT FIREMEN'S HISTORICAL SOCIETY, MANCHESTER, CT



1974

Chevrolet C50 to C65
city service, booster pump

250 gpm
100 gal tank

serial

Heavily modified from 1952 Diamond T

Lad 1 West Haven H&L Co., West Haven 1974-1996

COMPILED BY CONNECTICUT FIREMEN'S HISTORICAL SOCIETY, MANCHESTER, CT



1968
Monteiler
Ford
rescue, lighting

serial

Truck was donated by the Continental Baking Company.

Res 1, 27 West Haven Fire Dept. 1978-unk

COMPILED BY CONNECTICUT FIREMEN'S HISTORICAL SOCIETY, MANCHESTER, CT



1984
Pierce Mfg. Inc. Dash

pumper

1500 gpm
500 gal tank

serial

Eng 21,25 West Haven Fire Dept. 1984-2000
Eng 23 North End Hose No. 3, West Haven 2000-2012
Out of state - Maine Fire School 2012

COMPILED BY CONNECTICUT FIREMEN'S HISTORICAL SOCIETY, MANCHESTER, CT

West Haven Fire Dept., West Haven, CT (1888-); Eng & Hose Co.(1888); North End Hose(1895); Savin Rock Hose (1895); West Haven H&L; Stevens Hgts.



1965
American Fire Apparatus
 GMC
 pumper
 300 gpm
 300 gal tank
 serial unk

Eng 109 Bedford, NY **1965-1983**
 Eng 29 West Haven Fire Dept. **1986-unk**

Preserved - Private - N Haven **as of 2009**

COMPILED BY CONNECTICUT FIREMEN'S HISTORICAL SOCIETY, MANCHESTER, CT



1989
Pierce Mfg. Inc. Lance
 aerial
 mid-mount - 105' Smeal
 serial DD F

only three such units built

Lad 22 West Haven Fire Dept. **1989-2003**
 Out of state - Geneseo, NY **2004**

COMPILED BY CONNECTICUT FIREMEN'S HISTORICAL SOCIETY, MANCHESTER, CT



1992
Pierce Mfg. Inc. Dash
 pumper
 1250 gpm
 750 gal tank
 serial PR E-7042-01

Eng 21 West Haven Fire Dept. **1992-2000**
 Eng 24 Reserve **2000-unk**

COMPILED BY CONNECTICUT FIREMEN'S HISTORICAL SOCIETY, MANCHESTER, CT



1996
Pierce Mfg. Inc.
 International 4000 Series
 city service
 250 gpm
 300 gal tank
 serial

Truck 26 West Haven Fire Dept. **1996-**

COMPILED BY CONNECTICUT FIREMEN'S HISTORICAL SOCIETY, MANCHESTER, CT



2000
Pierce Mfg. Inc. Quantum
 pumper
 1250 gpm
 750 gal tank
 serial PR 11067

Eng 21 West Haven Fire Dept. **2000-2012**
 Out of state - LaVergne, TN **2012**

COMPILED BY CONNECTICUT FIREMEN'S HISTORICAL SOCIETY, MANCHESTER, CT



2003
Pierce Mfg. Inc. Dash
 aerial
 1250 gpm
 300 gal tank
 mid-mount - 100' Pierce
 serial

or 95'

Lad 22 West Haven Fire Dept. **2003-**

COMPILED BY CONNECTICUT FIREMEN'S HISTORICAL SOCIETY, MANCHESTER, CT

West Haven Fire Dept., West Haven, CT (1888-); Eng & Hose Co.(1888); North End Hose(1895); Savin Rock Hose (1895); West Haven H&L; Stevens Hgts.



1993
 Pierce Mfg. Inc. Dash

 pumper

 1500 gpm
 700 gal tank

 serial **DD E**

Eng 31 West Shore Fire Dist., West Haven **1993-2009**
 Rsv Eng 24, 29 West Haven Fire Dept. **2009-2012**

COMPILED BY CONNECTICUT FIREMEN'S HISTORICAL SOCIETY, MANCHESTER, CT



1992
 Pierce Mfg. Inc. Dash

 pumper

 1250 gpm
 750 gal tank

 serial **PR E-7042-02**

Eng 25 West Haven Fire Dept. **1992-2012**
 Eng 23 North End Hose No. 3, West Haven **2012-**

COMPILED BY CONNECTICUT FIREMEN'S HISTORICAL SOCIETY, MANCHESTER, CT



2012
 HME Ahrens-Fox

 pumper

 1250 midship
 880 gal tank

 serial

Eng 21 West Haven Fire Dept. **2012-**

COMPILED BY CONNECTICUT FIREMEN'S HISTORICAL SOCIETY, MANCHESTER, CT



2012
 HME Ahrens-Fox
 HME 1871 Spectr
 pumper

 1250 gpm
 880 gal tank

 serial

Eng 25 West Haven Fire Dept. **2012-**

COMPILED BY CONNECTICUT FIREMEN'S HISTORICAL SOCIETY, MANCHESTER, CT