



**Pukka**®

# COLD WEATHER KNITS GUIDE

SUPERIOR QUALITY • LIMITLESS OPTIONS • TRUE CUSTOMIZATION



## Look Cool. Stay Warm.

Create the perfect fully custom Cold Weather Knit for your shop, course, school, team or club. Truly make it your own by customizing any design with your Logo, Colors, using unique Embellishments and Custom Add-Ons.

### Table of Contents

Beaufort Knit .....	3	Skully / Beanie Knit .....	18
Belafonte Knit .....	4	Starboard Knit .....	19
Cable Knit .....	5	Toboggan / Vintage Beanie Knit .....	20
Casual Knit .....	6	Toboggan / Vintage Cuffed Knit .....	21
Compass Knit .....	7	Trawler Knit .....	22
Cuffed Knit .....	8	Wheelhouse / Waffle Knit .....	23
Dock-Wear Knit .....	9	Woodberry Knit .....	24
Dredge Knit .....	10	Acrylic Yarn Color Options .....	25
Ear Band .....	11	Lightweight Yarn Color Options .....	25
Fillmore Knit .....	12	Heather Yarn Color Options .....	26
Longshoreman Knit .....	13	Cotton Yarn Color Options .....	26
Performance Knit .....	14	Recycled Yarn Color Options .....	26
Pilot Knit .....	15	Logo Placement .....	27
Ribbed Knit .....	16	Custom Add-Ons .....	27
Rouster Knit .....	17		

# BEAUFORT KNIT



Cuffed Silhouette  
Shown in Heather Yarn



Cuffed Silhouette  
Shown in Acrylic Yarn

## Knit Fit



Side View



Front View

## Knit Detail



Flat Knit Crown



1x1 Rib Knit Cuff

## Knit Specifications

- ▶ Available in Acrylic Yarn (100% Acrylic) or Heather Yarn (70% Acrylic / 30% Polyester)
- ▶ Cuffed Silhouette
- ▶ Flat Knit Crown with 1x1 Rib Knit Cuff
- ▶ Extra Tall Ribbed Cuff

## Additional Upgrades

- ▶ Add Pom  
*Available in 1-Color, 2-Color or 3-Color*
- ▶ Add Faux Fur Pom  
*Available in Black or Tan*

# BELAFONTE KNIT



**Cuffed Silhouette**  
Shown as Solid



**Cuffed Silhouette**  
Shown w/ Milton - Contrast Cuff and Crown Available  
in Solid or 2-Color Heathered Lightweight Yarn

## Knit Fit

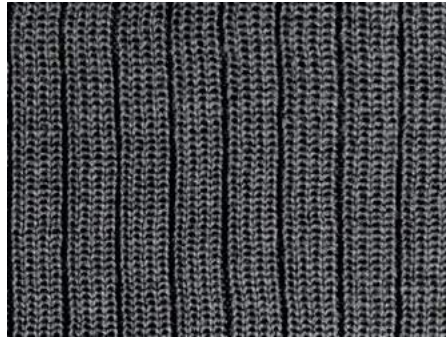


Side View

Front View

## Knit Detail

4x2 Rib Knit



## Knit Specifications

- ▶ Lightweight Yarn  
100% Acrylic
- ▶ Cuffed Silhouette
- ▶ 4x2 Rib Knit Throughout

## Additional Upgrades

- ▶ Add Heathered Yarn  
Available in 2-Color
- ▶ Add Pom  
Available in 1-Color, 2-Color or 3-Color
- ▶ Add Faux Fur Pom  
Available in Black or Tan

## Jacquard Patterns

Choose from these variations of the Milton jacquard pattern option



KN062 // Milton  
Solid Top & Bottom



KN062 // Milton  
Heathered Yarn Bottom



KN062 // Milton  
Heathered Yarn Top



KN062 // Milton  
Heathered Yarn Top & Bottom

## 2-Color Heathered Lightweight Yarn Color Options



Black / White



Navy / White



Maroon / White



Steel / White



Aqua / White



Brown / Stone



Charcoal / Steel



Black / Charcoal

# CABLE KNIT



**Cuffed Silhouette**  
Shown in 2-Color Marled Yarn



**Uncuffed Silhouette**  
Shown as Solid

## Cuffed Knit Fit



Side View

Front View

## Knit Detail

Cable Knit



## Knit Specifications

- ▶ Acrylic Yarn  
100% Acrylic
- ▶ Available in Cuffed or Uncuffed Silhouette
- ▶ Cable Knit Crown with a Ribbed Cuff or Opening

## Additional Upgrades

- ▶ Add 2-Color Marled Yarn  
Base Color of Black, Charcoal, Steel, Stone or White  
+ 1 Additional Acrylic Yarn Color
- ▶ Add Pom  
Available in 1-Color, 2-Color or 3-Color
- ▶ Add Faux Fur Pom  
Available in Black or Tan
- ▶ Add Interior Fleece Lining  
Available in Black, Steel or Olive

## Uncuffed Knit Fit



Side View

Front View

# CASUAL KNIT



Cuffed Silhouette  
Shown as Solid



Cuffed Silhouette  
Shown in 2-Color Twisted Yarn

### Knit Fit

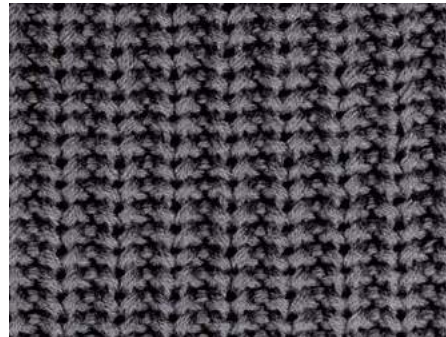


Side View

Front View

### Knit Detail

Chunky Rib Knit



### Knit Specifications

- ▶ Cotton Yarn  
*100% Cotton*
- ▶ Cuffed Silhouette
- ▶ Chunky Rib Knit
- ▶ Relaxed Fit with Six Fully Fashioned Crown Darts

### Additional Upgrades

- ▶ Add Twisted Yarn  
*Available in 2-Color*
- ▶ Add Pom  
*Available in 1-Color, 2-Color or 3-Color*
- ▶ Add Faux Fur Pom  
*Available in Black or Tan*

### 2-Color Twisted Cotton Yarn Color Options



Black / Steel



Steel / White



Maroon / White



Brown / Texas Orange



Forest / Olive



Navy / White

# COMPASS KNIT



Cuffed Silhouette  
Shown as Solid



Cuffed Silhouette  
Shown as 2-Color Heathered Yarn

## Knit Fit



Side View

Front View

## Knit Detail

1x1 Rib Knit



## Knit Specifications

- ▶ Lightweight Yarn  
*100% Acrylic*
- ▶ Cuffed Silhouette
- ▶ Super Soft and Lightweight 1x1 Rib Knit Throughout
- ▶ Available in Regular and Youth Sizes  
*Youth Fit Can Be Added in 12-Unit Increments*

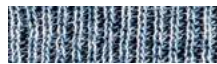
## Additional Upgrades

- ▶ Add Heathered Yarn  
*Available in 2-Color*
- ▶ Add Pom  
*Available in 1-Color, 2-Color or 3-Color*
- ▶ Add Faux Fur Pom  
*Available in Black or Tan*

## 2-Color Heathered Lightweight Yarn Color Options



Black / White



Navy / White



Maroon / White



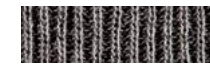
Steel / White



Aqua / White



Brown / Stone



Charcoal / Steel



Black / Charcoal

# CUFFED KNIT



Cuffed Silhouette  
Shown as Solid



Cuffed Silhouette  
Shown w/ Jacquard Pattern

### Knit Fit



Side View



Front View

### Knit Detail

Flat Knit



### Knit Specifications

- ▶ Acrylic Yarn  
100% Acrylic
- ▶ Cuffed Silhouette
- ▶ Flat Knit
- ▶ Ribbed Cuff on Select Jacquard Patterns  
Available on KN004 // Ramos, KN012 // Kurt, KN021 // Camo, KN024 // Sedona, KN057 // Norton, KN067 // Hudson & KN072 // Swift

### Additional Upgrades

- ▶ Add Pom  
Available in 1-Color, 2-Color or 3-Color
- ▶ Add Faux Fur Pom  
Available in Black or Tan
- ▶ Add Interior Fleece Lining  
Available in Black, Steel or Olive

### Jacquard Pattern Options



KN004 // Ramos



KN008 // Piper



KN012 // Kurt



KN021 // Camo



KN024 // Sedona



KN030 // Complex



KN045 // Scroll



KN057 // Norton



KN063 // Crawford



KN067 // Hudson



KN070 // Pembroke



KN072 // Swift



# DOCK-WEAR KNIT



Cuffed Silhouette  
Shown in 2-Color Twisted Yarn



Slouch Silhouette  
Shown as Solid

## Cuffed Knit Fit



Side View

Front View

## Knit Detail

1x1 Rib Knit



## Knit Specifications

- ▶ Acrylic Yarn  
100% Acrylic
- ▶ Available in Cuffed or Slouch Silhouette
- ▶ 1x1 Rib Knit Throughout

## Additional Upgrades

- ▶ Add Twisted Yarn  
Available in 2-Color or 3-Color Twisted Yarn
- ▶ Add Pom  
Available in 1-Color, 2-Color or 3-Color
- ▶ Add Faux Fur Pom  
Available in Black or Tan

## Slouch Knit Fit



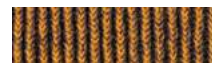
Side View

Front View

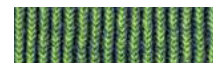
## 2-Color Twisted Acrylic Yarn Color Options



Black / Steel



Charcoal / Gold



Metal / Lime



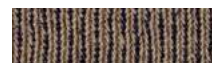
Steel / White



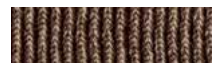
Maroon / Black



Scarlet / White



Khaki / Navy



Brown / Khaki



Forest / Green



Navy / Slate



Electric Blue / White

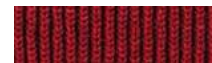


Navy / Carolina

## 3-Color Twisted Acrylic Yarn Color Options



Charcoal / Metal / Steel



Maroon / Crimson / Scarlet



Gold / Yellow / Nugget



Navy / Royal / Slate

# DREDGE KNIT



Cuffed Silhouette  
Shown as Solid



Cuffed Silhouette  
Shown w/ 1-Color Pom

## Knit Fit

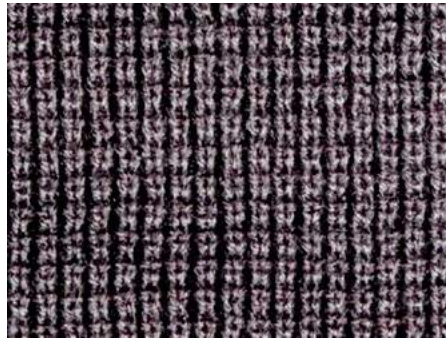


Side View

Front View

## Knit Detail

Waffle Knit



## Knit Specifications

- ▶ Available in Recycled Yarn  
*100% Recycled Polyester*
- ▶ Cuffed Silhouette
- ▶ Waffle Knit

## Additional Upgrades

- ▶ Add Pom  
*Available in 1-Color, 2-Color or 3-Color*
- ▶ Add Faux Fur Pom  
*Available in Black or Tan*

# EAR BAND



Ear Band  
Shown as Solid



Ribbed Ear Band  
Shown as Solid

## Ear Band Fit



Side View



Front View

## Knit Detail

Flat Knit



## Ear Band Specifications

- ▶ Acrylic Yarn  
100% Acrylic
- ▶ Available in Flat Knit

## Ear Band Jacquard Patterns



KN007 // Elevation



KN025 // Alpine



KN065 // Summit



KN066 // Peak

## Ribbed Ear Band Fit



Side View



Front View

## Knit Detail

Rib Knit



## Ribbed Ear Band Specifications

- ▶ Acrylic Yarn  
100% Acrylic
- ▶ Available in Rib Knit

## Ribbed Ear Band Jacquard Pattern



KN043 // Avalanche

# FILLMORE KNIT



Cuffed Silhouette



Cuffed Silhouette  
Shown w/ Tie-Dye Pom

## Knit Fit



Side View



Front View

## Knit Detail

Flat Knit



## Knit Specifications

- ▶ Available in Cotton Yarn  
*100% Cotton*
- ▶ Cuffed Silhouette
- ▶ Flat Knit
- ▶ Form-Fitting with a Tall Cuff and Crown
- ▶ One-of-a-Kind Product Treated with a Custom Hand Tie-Dye Process Making the Pattern and Coloration of Each Piece Totally Unique

## Additional Upgrades

- ▶ Add Tie-Dye Pom  
*Available in the Same Tie-Dye as the Knit Color Selected Only*
- ▶ Add Faux Fur Pom  
*Available in Black or Tan*

## Tie-Dye Cotton Yarn Color Options



Stormy Night



Bright Berry



Blue Moon



Summer Sky



Cotton Candy

# LONGSHOREMAN KNIT



Cuffed Silhouette  
Shown as Solid



Slouch Silhouette  
Shown in 2-Color Twisted Yarn

## Cuffed Knit Fit



Side View

Front View

## Knit Detail

1x1 Rib Knit



## Knit Specifications

- ▶ Acrylic Yarn  
100% Acrylic
- ▶ Available in Cuffed or Slouch Silhouette
- ▶ 1x1 Rib Knit Throughout
- ▶ Elongated Crown

## Additional Upgrades

- ▶ Add Twisted Yarn  
Available in 2-Color or 3-Color Twisted Yarn
- ▶ Add Pom  
Available in 1-Color, 2-Color or 3-Color
- ▶ Add Faux Fur Pom  
Available in Black or Tan

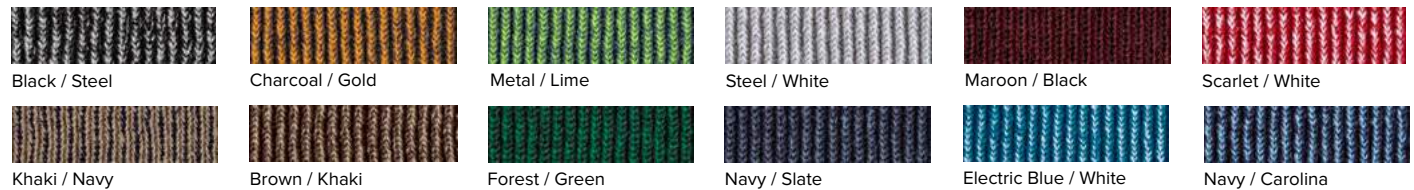
## Slouch Knit Fit



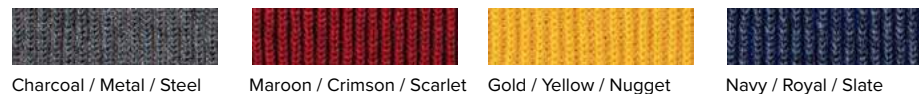
Side View

Front View

## 2-Color Twisted Acrylic Yarn Color Options



## 3-Color Twisted Acrylic Yarn Color Options



# PERFORMANCE KNIT



**Uncuffed Silhouette**  
Shown as Solid w/Performance Mesh Lining

## Knit Fit



Side View

Front View

## Knit Detail

Flat Knit



## Knit Specifications

- ▶ Acrylic Yarn  
100% Acrylic
- ▶ Uncuffed Silhouette
- ▶ Flat Knit
- ▶ Performance Mesh Lining  
*See Website For Colors Available*

## Additional Upgrades

- ▶ Add Pom  
*Available in 1-Color, 2-Color or 3-Color*
- ▶ Add Faux Fur Pom  
*Available in Black or Tan*

# PILOT KNIT



Slouch Silhouette  
Shown as Solid



Slouch Silhouette  
Shown as 2-Color Heathered Yarn

### Knit Fit



Side View

Front View

### Knit Detail

1x1 Rib Knit



### Knit Specifications

- ▶ Lightweight Yarn  
100% Acrylic
- ▶ Slouch Silhouette
- ▶ Super Soft and Lightweight 1x1 Rib Knit Throughout

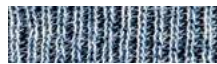
### Additional Upgrades

- ▶ Add Heathered Yarn  
Available in 2-Color
- ▶ Add Pom  
Available in 1-Color, 2-Color or 3-Color
- ▶ Add Faux Fur Pom  
Available in Black or Tan

### 2-Color Heathered Lightweight Yarn Color Options



Black / White



Navy / White



Maroon / White



Steel / White



Aqua / White



Brown / Stone



Charcoal / Steel



Black / Charcoal

# RIBBED KNIT



Cuffed Silhouette  
Shown as Solid



Uncuffed Silhouette  
Shown as Solid

## Cuffed Knit Fit



Side View

Front View

## Knit Detail

2x2 Rib Knit



## Knit Specifications

- ▶ Acrylic Yarn  
100% Acrylic
- ▶ Available in Cuffed or Uncuffed Silhouette
- ▶ 2x2 Rib Knit Throughout

## Additional Upgrades

- ▶ Add Pom  
Available in 1-Color, 2-Color or 3-Color
- ▶ Add Faux Fur Pom  
Available in Black or Tan

## Uncuffed Knit Fit



Side View

Front View



# ROUSTER KNIT



Cuffed Silhouette  
Shown in Acrylic Yarn



Cuffed Silhouette  
Shown in Heather Yarn

## Knit Fit



Side View

Front View

## Knit Detail

Flat Knit



## Knit Specifications

- ▶ Available in Acrylic Yarn (100% Acrylic) or Heather Yarn (70% Acrylic / 30% Polyester)
- ▶ Cuffed Silhouette
- ▶ Flat Knit
- ▶ Form-Fitting with a Tall Cuff and Crown
- ▶ Available in Regular and Youth Sizes
- Youth Fit Can Be Added in 12-Unit Increments*

## Additional Upgrades

- ▶ Add Pom  
*Available in 1-Color, 2-Color or 3-Color*
- ▶ Add Faux Fur Pom  
*Available in Black or Tan*

# SKULLY/ BEANIE KNIT



Uncuffed Silhouette  
Shown as Solid



Uncuffed Silhouette  
Shown w/ Jacquard Pattern

### Knit Fit



Side View



Front View

### Knit Detail

Flat Knit



### Knit Specifications

- ▶ Acrylic Yarn  
*100% Acrylic*
- ▶ Uncuffed Silhouette
- ▶ Flat Knit
- ▶ Form-Fitting Low-Profile Sits Over the Ear

### Additional Upgrades

- ▶ Add Pom  
*Available in 1-Color, 2-Color or 3-Color*
- ▶ Add Faux Fur Pom  
*Available in Black or Tan*
- ▶ Add Interior Fleece Lining  
*Available in Black, Steel or Olive*

### Jacquard Pattern Options



KN002 // Billy



KN005 // Theodore



KN006 // Powell



KN014 // Jason



KN027 // Ludwig



KN028 // Gilroy



KN029 // Bunker



KN071 // Palmer

# STARBOARD KNIT



Cuffed Silhouette  
Shown in Heather Yarn



Cuffed Silhouette  
Shown in Acrylic Yarn

## Knit Fit



Side View

Front View

## Knit Detail

1x1 Rib Knit



## Knit Specifications

- ▶ Available in Acrylic Yarn (100% Acrylic) or Heather Yarn (70% Acrylic / 30% Polyester)
- ▶ Cuffed Silhouette
- ▶ 1x1 Rib Knit Throughout
- ▶ Adjustable Cuff to Personalize the Look & Feel

## Additional Upgrades

- ▶ Add Pom  
*Available in 1-Color, 2-Color or 3-Color*
- ▶ Add Faux Fur Pom  
*Available in Black or Tan*

# TOBOGGAN / VINTAGE BEANIE KNIT



Uncuffed Silhouette  
Shown as Solid



Uncuffed Silhouette  
Shown as 2-Color Marled Yarn

## Knit Fit



Side View



Front View

## Knit Detail

Chunky Knit



## Knit Specifications

- ▶ Acrylic Yarn  
100% Acrylic
- ▶ Uncuffed Silhouette
- ▶ Chunky Knit for Added Warmth and Vintage Appeal

## Additional Upgrades

- ▶ Add 2-Color Marled Yarn  
Base Color of Black, Charcoal, Steel, Stone or White  
+ 1 Additional Acrylic Yarn Color
- ▶ Add Pom  
Available in 1-Color, 2-Color or 3-Color
- ▶ Add Faux Fur Pom  
Available in Black or Tan
- ▶ Add Interior Fleece Lining  
Available in Black, Steel or Olive

## Jacquard Patterns



KN039 // Russell



KN040 // Gus



KN069 // Reed

# TOBOGGAN / VINTAGE CUFFED KNIT



Cuffed Silhouette  
Shown as Solid



Cuffed Silhouette  
Shown as 2-Color Marled Yarn

### Knit Fit



Side View



Front View

### Knit Detail

Chunky Knit



### Knit Specifications

- ▶ Acrylic Yarn  
100% Acrylic
- ▶ Cuffed Silhouette
- ▶ Chunky Knit for Added Warmth and Vintage Appeal
- ▶ Ribbed Cuff on Select Jacquard Patterns  
Available on KN038 // Porter, KN042 // Harmony, KN052 // Brewer, KN053 // Lambo, KN055 // Valen & KN068 // Mansford

### Additional Upgrades

- ▶ Add 2-Color Marled Yarn  
Base Color of Black, Charcoal, Steel, Stone or White + 1 Additional Acrylic Yarn Color
- ▶ Add Pom  
Available in 1-Color, 2-Color or 3-Color
- ▶ Add Faux Fur Pom  
Available in Black or Tan
- ▶ Add Interior Fleece Lining  
Available in Black, Steel or Olive

### Jacquard Pattern Options



KN035 // Daytona



KN037 // Montauk



KN038 // Porter



KN041 // Driscoll



KN042 // Harmony



KN052 // Brewer



KN053 // Lambo



KN055 // Valen



KN056 // Perry



KN061 // Fair Isle



KN064 // Mogul



KN068 // Mansford



KN073 // Weddell



KN076 // Wren

# TRAWLER KNIT



Cuffed Silhouette  
Shown as Solid



Cuffed Silhouette  
Shown w/ 1-Color Pom

## Knit Fit



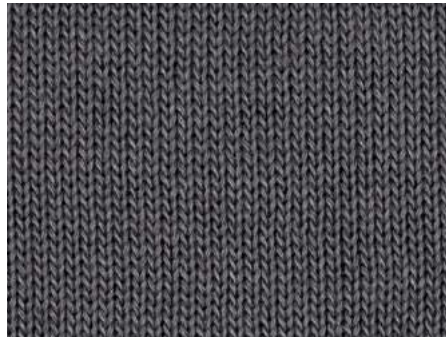
Side View



Front View

## Knit Detail

Flat Jersey Knit



## Knit Specifications

- ▶ Available in Recycled Yarn  
*100% Recycled Polyester*
- ▶ Cuffed Silhouette
- ▶ Flat Jersey Knit
- ▶ Eco-Friendly Utilizing 100% Recycled Polyester Yarn Made from Post-Consumer Plastics such as Bottles and Textile Waste

## Additional Upgrades

- ▶ Add Pom  
*Available in 1-Color, 2-Color or 3-Color*
- ▶ Add Faux Fur Pom  
*Available in Black or Tan*

# WHEELHOUSE WAFFLE KNIT



Cuffed Silhouette  
Shown in Acrylic Yarn



Cuffed Silhouette  
Shown in Heather Yarn

### Knit Fit

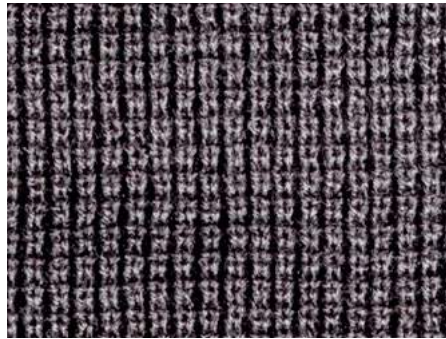


Side View

Front View

### Knit Detail

Waffle Knit



### Knit Specifications

- ▶ Available in Acrylic Yarn (100% Acrylic) or Heather Yarn (70% Acrylic / 30% Polyester)
- ▶ Cuffed Silhouette
- ▶ Waffle Knit
- ▶ Available in Regular and Youth Sizes  
*Youth Fit Can Be Added in 12-Unit Increments*

### Additional Upgrades

- ▶ Add Pom  
*Available in 1-Color, 2-Color or 3-Color*
- ▶ Add Faux Fur Pom  
*Available in Black or Tan*

### Jacquard Pattern Option



KN077 // Gunnel

# WOODBERRY KNIT



Cuffed Silhouette  
Shown as Solid



Cuffed Silhouette  
Shown in 3-Color Twisted Yarn

### Knit Fit



Side View

Front View

### Knit Detail

Single Layer Rib Knit



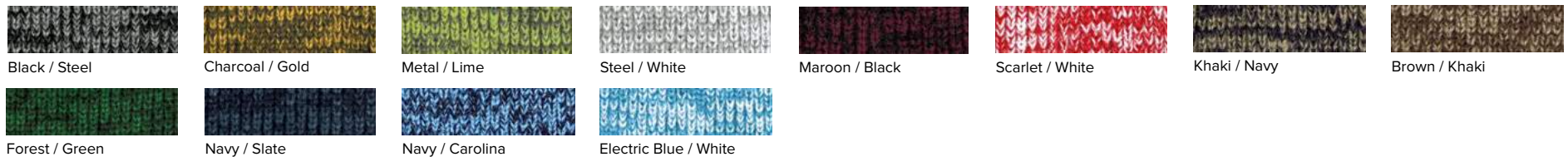
### Knit Specifications

- ▶ Acrylic Yarn  
*100% Acrylic*
- ▶ Cuffed Silhouette
- ▶ Single Layer Rib Knit
- ▶ Fully Fashioned Crown Seams and Permanent Cuff Eliminates Excess Bulk for a Refined Look

### Additional Upgrades

- ▶ Add Twisted Yarn  
*Available in 2-Color or 3-Color*
- ▶ Add Pom  
*Available in 1-Color, 2-Color or 3-Color*
- ▶ Add Faux Fur Pom  
*Available in Black or Tan*

### 2-Color Twisted Acrylic Yarn Color Options



Black / Steel

Charcoal / Gold

Metal / Lime

Steel / White

Maroon / Black

Scarlet / White

Khaki / Navy

Brown / Khaki

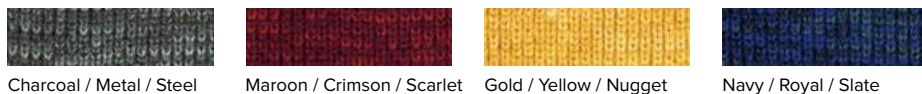
Forest / Green

Navy / Slate

Navy / Carolina

Electric Blue / White

### 3-Color Twisted Acrylic Yarn Color Options



Charcoal / Metal / Steel

Maroon / Crimson / Scarlet

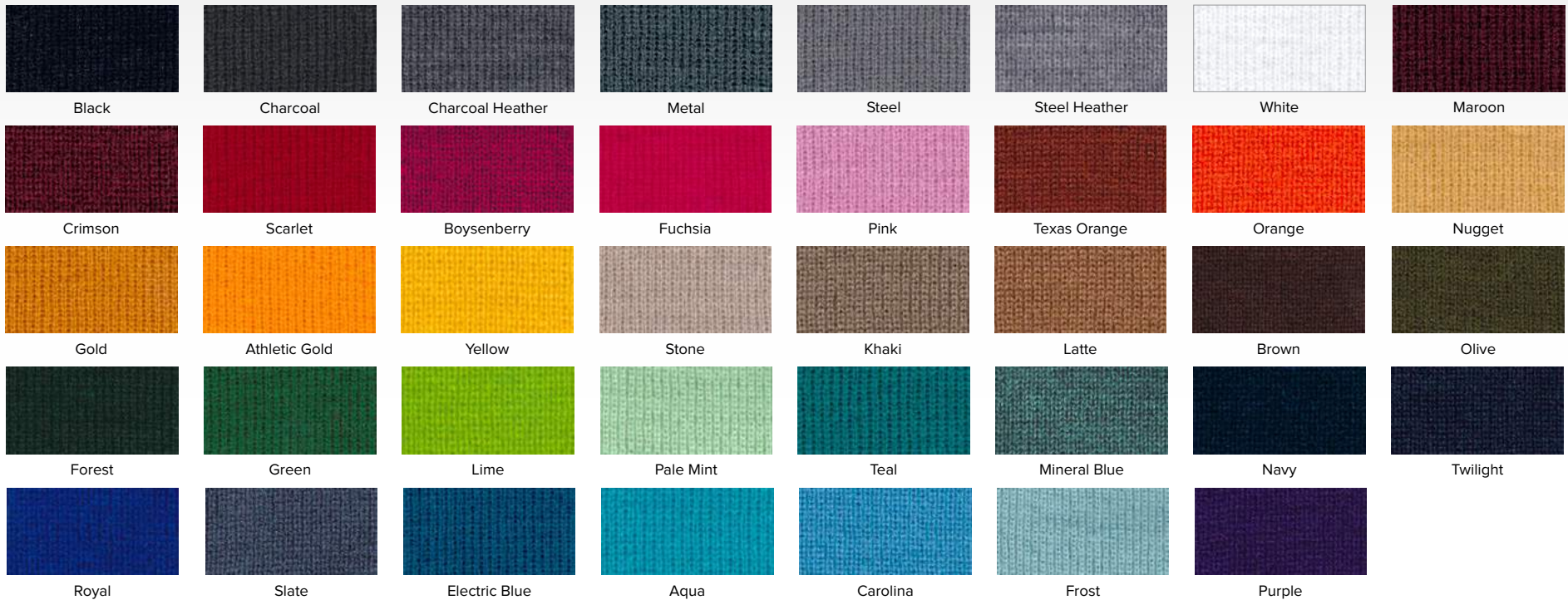
Gold / Yellow / Nugget

Navy / Royal / Slate



# YARN COLOR PALETTE

## Acrylic Yarn Color Options

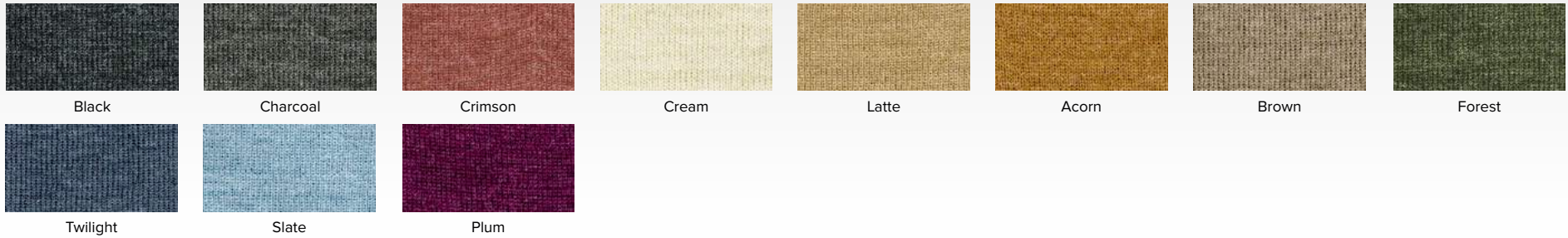


## Lightweight Yarn Color Options

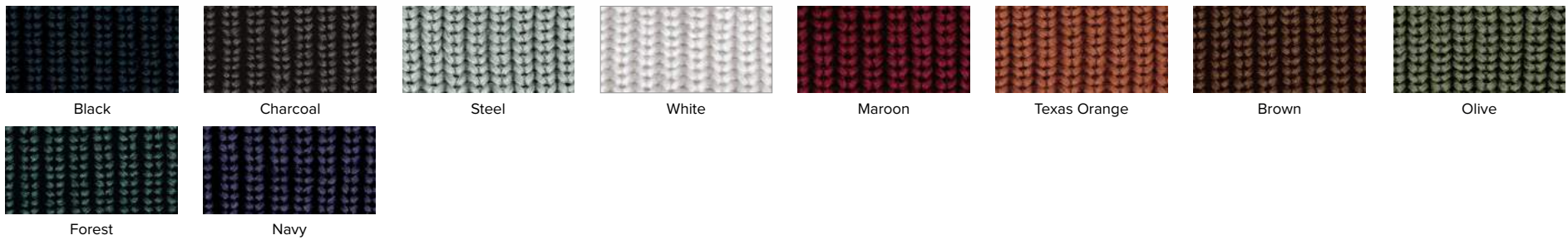


# YARN COLOR PALETTE

## Heather Yarn Color Options



## Cotton Yarn Color Options



## Recycled Yarn Color Options



# LOGO PLACEMENT options



Front



Front Left



Front Right



Left Side



Right Side



Back



Back Left



Back Right

# CUSTOM ADD-ONS



Pom

Available in 1-Color, 2-Color or 3-Color



Faux Fur Pom

Available in Black or Tan



Interior Fleece Lining

Available in Black, Steel or Olive on Select Knits