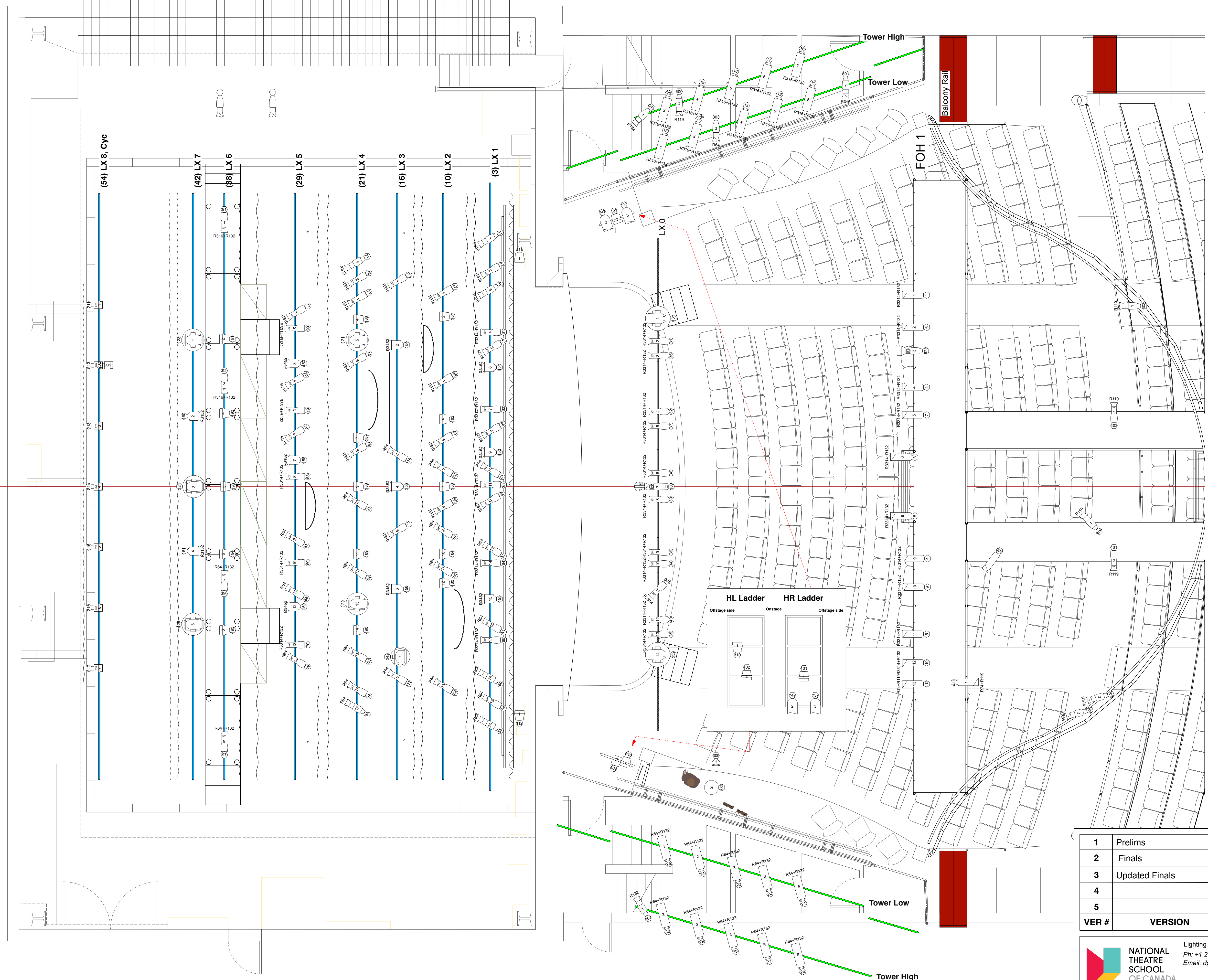


| | |
|----|------------------|
| 66 | Black Wind Break |
| 55 | LX 8 (Cyc) |
| 54 | LX 8 (Cyc) |
| 53 | |
| 52 | |
| 51 | |
| 50 | |
| 49 | |
| 47 | |
| 45 | Cyc |
| 44 | Scrim |
| 43 | |
| 42 | LX 7 |
| 39 | LX 6 |
| 38 | LX 6 |
| 36 | Legs 4 |
| 34 | Border 4 |
| 33 | |
| 32 | |
| 31 | |
| 29 | LX 5 |
| 28 | |
| 27 | Tree B |
| 26 | Legs 3 |
| 25 | Border 3 |
| 24 | |
| 23 | |
| 22 | |
| 21 | LX 4 |
| 20 | |
| 19 | Tree C |
| 18 | |
| 17 | Fabric Gate |
| 16 | LX 3 |
| 14 | Legs 2 |
| 13 | Border 2 |
| 12 | Tree D |
| 11 | |
| 10 | LX 2 |
| 9 | Tree A |
| 7 | Tree A |
| 6 | Legs 1 |
| 5 | Border 1 |
| 3 | LX 1 |
| 2 | |
| 1 | Porail |
| | Ham Rail Border |



| Equipment Summary | | |
|------------------------------|--|------------|
| Symbol | Description | Count |
| Conventional Fixtures | | |
| | ETC Source 4 10deg @575 W | 1 |
| | ETC Source 4 26deg @575 W | 4 |
| | ETC Source 4 36deg @575 W | 11 |
| | ETC Source 4 PAR VNSP @575 W | 1 |
| | USITT PAR64-NSP @1000 W | 2 |
| | Strand Cantata 18-32 @1200 W | 20 |
| | Selecon Pacific 14 35 ZoomSpot @575 W | 10 |
| | Selecon Pacific 20deg @575 W | 5 |
| | Selecon Pacific 30deg @575 W | 22 |
| | Selecon Pacific 40deg @575 W | 27 |
| | Selecon Pacific 50deg @575 W | 7 |
| | Strand 6" Fresnelite @1000 W | 11 |
| Total | | 121 |
| Intelligent Fixtures | | |
| | Chauvet COLORado 3 Solo @187 W | 24 |
| | Clay Paky Alpha Spot QWO 800 @1200 W | 6 |
| | ETC ColorSource CYC @133 W | 14 |
| | ETC Source4 LED2LS 26deg @171 W | 1 |
| | Robe Lighting ParFect 100 @200 W | 2 |
| | Robe Lighting Robin 1000 LED Beam @800 W | 1 |
| | Robe Lighting Robin MMX WashBeam @1020 W | 2 |
| | Selecon PLProfile4 MkII LED 2550 Zoom @580 W | 4 |
| Total | | 54 |
| Accessories | | |
| | I-Cue @0 W | 1 |
| | Rosco DMX Iris | 1 |
| | Drop In Iris | 1 |
| | 7.5in 4 Leaf Barn Door | 11 |

| 1 | Prelims | 2026-01-23 |
|-------|----------------|------------|
| 2 | Finals | 2026-02-06 |
| 3 | Updated Finals | 2026-02-07 |
| 4 | | |
| 5 | | |
| VER # | VERSION | DATE |

Lighting Designer: **Duncan Gould**
 Ph: +1 226 343 9543
 Email: dgould.edu@ent-nts.ca

DATE: 2026-02-06
 SCALE: 1/4"=1'0"
 DRAWN BY: D. Gould
 NES LX.vwx
 DRAWING # **1** of 3
Overhead

The Neverending Story
 By: Michael Ende

Directed By: **Jovanni Sy** Set Designer: **Maya Padlewska**
 Technical Director: **Katie Webb** Sound Designer: **João Veloso**
 Assist Technical Director: **Nico Noguera** Video Designer: **Dani Royer**

PRODUCED BY:
National Theatre School of Canada
 Ludger-Duvernay
 1182 Boul. St. Laurent, Montréal, QC