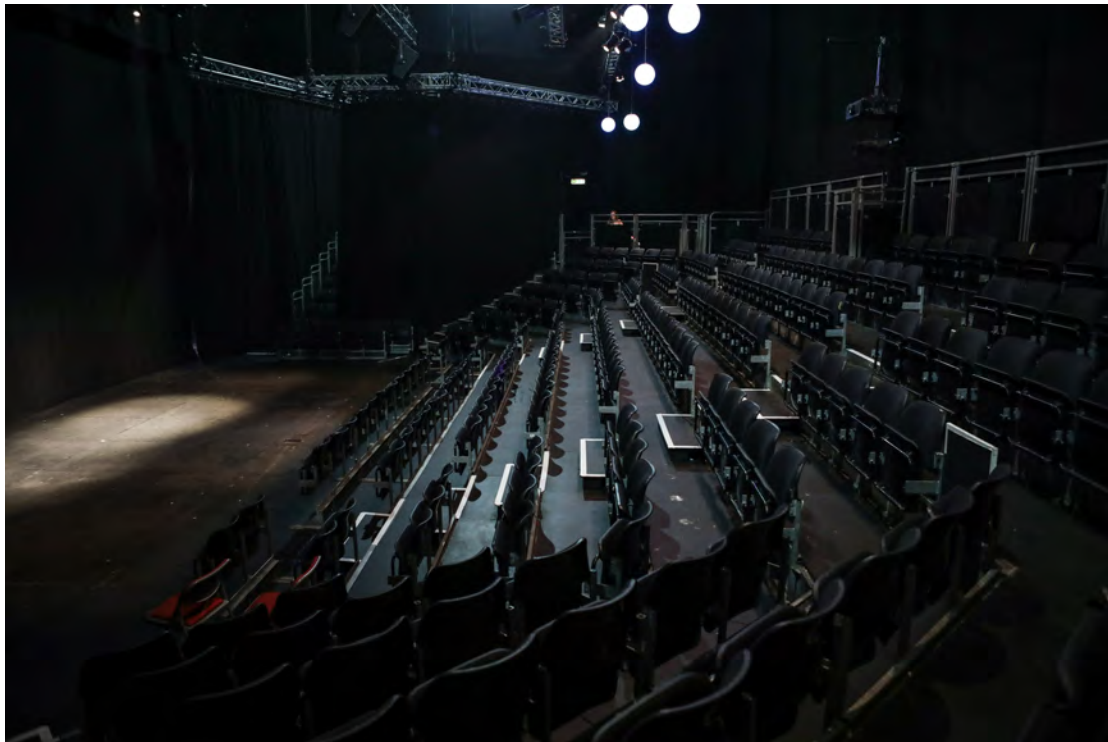




# George Square Udderbelly Technical Specifications



Pictures shown of the venue are from previous years and for illustrative purposes only; they may not be representative of the 2020 setup.

<b><u>Capacity</u></b>	410
<b><u>Suitability</u></b>	Theatre, Circus, Comedy, Musical Theatre, Cabaret, Dance, Family
<b><u>Address</u></b>	George Square Gardens, George Square, Edinburgh, EH8 9JZ
<b><u>Contact</u></b>	<a href="mailto:programming@underbelly.co.uk">programming@underbelly.co.uk</a>



The Udderbelly is Underbelly's purpose-built venue inside an enormous upside-down purple cow which has been a focal point of the Edinburgh Fringe since 2006. This is the most talked about and most photographed venue of the Fringe. An exciting performance space that seats 410 in three raked seating banks on three sides. Perfect for a wide range of large-scale productions.

<p><b><u>Stage and Seating</u></b></p>	<p>The Udderbelly stage is a fixed shallow thrust configuration with audience seated on three sides. The performance space is around 8.5m wide by 4.8m deep. The stage surface itself is black painted 18mm MDF laid onto the venue floor so there is a slight lip defining the fire lane between audience and stage space. The auditorium has a capacity of 410. Please refer to the plans at the end of this document.</p> <p>At the rear of the stage are a pair of black drapes with a split to the centre to allow for entrances or to open up to reveal the guest truss; a triangular truss on motors used to hang set pieces, screens or cycloramas for projection as productions require. Stage left and right are two drape legs which form wings for stage entrances.</p>
<p><b><u>Backstage</u></b></p>	<p>The exit to the dressing rooms is by doors behind the wing drapes both stage right and stage left. Behind the upstage drapes there is a narrow crossover space.</p> <p>It is possible to place props tables or similar in the wing space either side of the stage but please advise us of all your backstage storage needs so a plan can be put into place. All backstage space is shared by companies performing on the same day; as such props and set pieces must be packed away as much as possible between shows.</p> <p>Please note there are no laundry facilities on site. If you have particular laundry requirements, then please discuss these with the technical manager and we can try to help you make arrangements.</p>
<p><b><u>Storage and Dressing Rooms</u></b></p>	<p>A storage container will be made available for companies to store any set and props on site. This is a shared space and your exact requirements must be discussed with the technical manager before arrival so that space can be allocated and properly planned.</p> <p>A basic shared dressing room unit will be provided with tables, lights and mirrors. Please ensure all of your requirements are discussed with the technical manager prior to your arrival.</p> <p>Please note that access between the stage and dressing room is via an external walkway.</p>

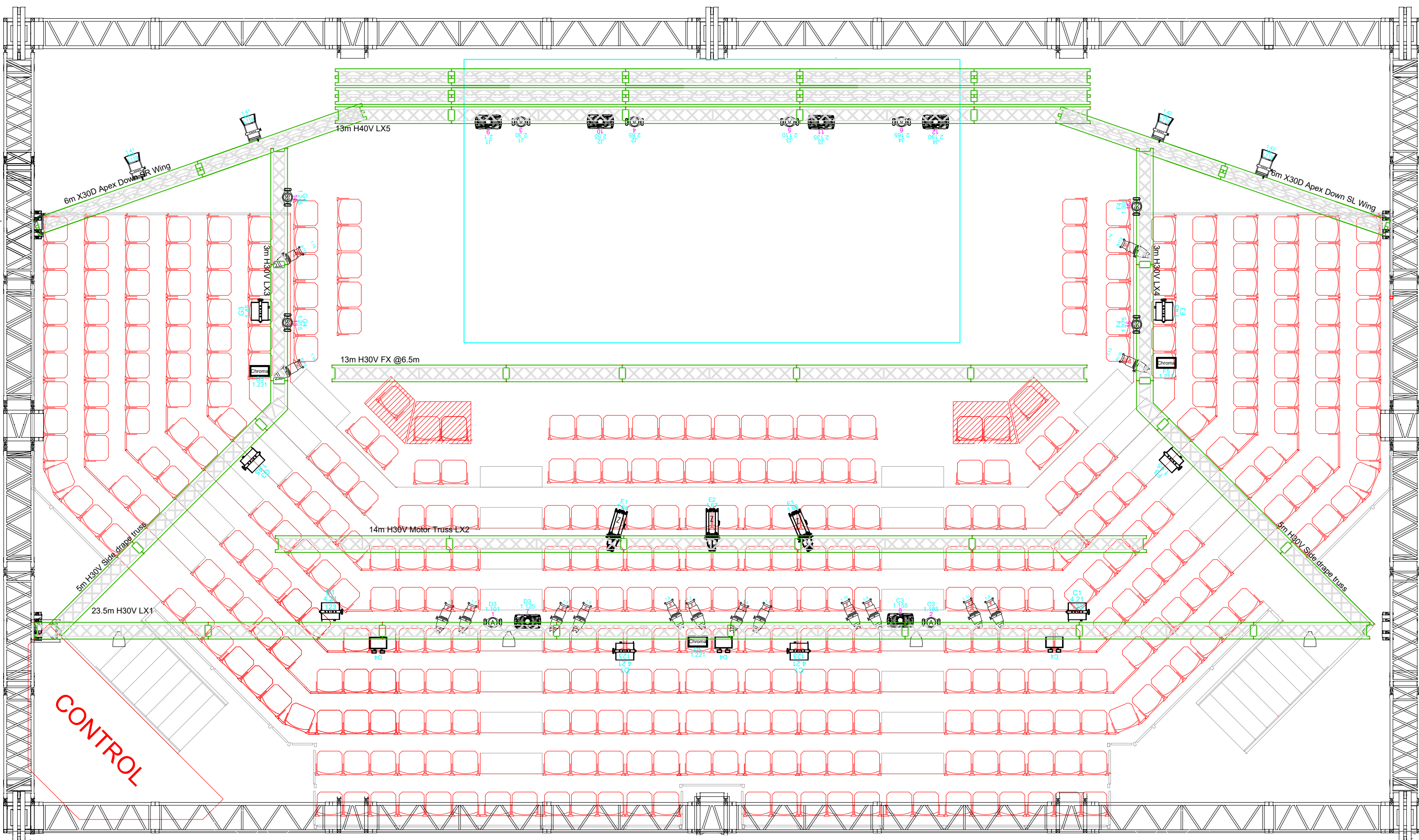


<p><b><u>Rigging</u></b></p>	<p>The Udderbelly has both good height and weight loading for the rigging of aerial/circus acts. Any rigging setup required will change dependant on the requirements of the shows programmed into the space. An aerial rigging truss will usually be at a height of approximately 7.5m – 8m from the stage floor and capable taking either single or multiple rigging points. It is possible to have a truss leg in one of the stage wings for counterweight operation and tying off of a line going over the stage.</p> <p>Installation of the required truss is only possible when the venue is being constructed, so please contact the technical manager as much in advance as possible with your exact requirements so we can ensure that your proposed setup is possible. Please send us as much detail as you can, including:</p> <ul style="list-style-type: none"> <li>- quantity of points</li> <li>- positions drawn on a plan</li> <li>- accurate weight loading required (please detail separately the actual weight loading required for the act, and the safety factor)</li> <li>- details of the operation, ideally with an explanatory video</li> </ul>
<p><b><u>Lighting</u></b></p>	<p>The venue will provide:</p> <ul style="list-style-type: none"> <li>- <b>Frontlight:</b> a 6-way general cover from 12x ETC Source4s, 2x Mac Aura XBs, 2x Mac Quantum Profiles</li> <li>- <b>Sidelight:</b> 4x ETC Source4s and 4x Ayrton S3 Nandobeams</li> <li>- <b>Backlight:</b> 4x Mac AuraXBs and 4x Mac Quantum Profiles</li> <li>- <b>House light:</b> Coda floods and RGBW Pulsar Chromaspheres</li> <li>- <b>Control:</b> Avolites Tiger Touch II</li> <li>- <b>Haze:</b> 2x Unique 2 machines with fans USL &amp; USR</li> </ul> <p>Please see the plan at the end of this document for further detail.</p> <p>Any other lighting required in addition to this can be supplied but the hire cost of these units and any associated dimming will be passed on to companies. Please discuss any requirements with the Company Technical Manager.</p>
<p><b><u>Sound</u></b></p>	<p>A house system consisting of:</p> <ul style="list-style-type: none"> <li>- 6x D&amp;B Q7s</li> <li>- 6x D&amp;B Q Subs</li> <li>- Yamaha LS9 32 channel desk</li> <li>- 4 x radio channels supplied with either hand-held or headset mics as required</li> <li>- 4 x wedge monitors with a 4-way mix</li> </ul> <p>We can supply additional wired and wireless radio mics and other sound equipment. Please discuss your requirements with the technical manager who can arrange quotes as required.</p> <p>Please note that the venue is a tent. We will do our best to keep noise outside to a minimum. Further to this there will be a noise limit for performances set (particularly applicable after 9pm). We will work with companies to find a sensible balance, but this is a requirement of our licence with regards to local businesses and residents.</p>



<b><u>Projection</u></b>	<p>The Udderbelly has a 7k lumens projector provided as standard; this projects onto the cyclorama that is hung behind the upstage drapes which open to frame the projection area. The projected area is roughly 5mW x 2.8mD, however the is adjustable to be larger or smaller.</p> <p>Limited video can be run from the venue's Mac Mini QLab machine, however for complex or high-definition video we recommend that you bring a suitable computer for playback. HDMI and Mini Displayport connections are available at control connected to the projector as standard.</p>
<b><u>Power</u></b>	<p>Stage power can be provided. Please discuss your requirements with the technical manager. A charge may have to be passed to companies requiring anything larger than 2 x 16A 1ph supplies.</p>
<b><u>Comms</u></b>	<p>We will supply 3 sets of comms for the sound op, LX op and backstage for a stage manager or similar. Please advise if you require any sets in addition to these.</p>
<b><u>Other Effects</u></b>	<p>Please ensure you discuss with the technical manager any requirements for additional effects such as pyrotechnics, naked flame, strobe lighting or smoking at the very earliest opportunity due to time restrictions to obtain licenses for their use. We will try to make these work for you but this will need to happen in line with the local authority requirements.</p>





**underbelly**  
 4th Floor, 36-38 Hatton Gardens, London, EC1N 8EB  
 Tel 0207 307 8480 - Fax 0207 307 8481 - Web www.underbelly.co.uk

Drawing Title:  
 19 Fringe GSQ  
 Udderbelly  
 LX Plot A3

Drawing Number:  
 Drawing Scale:  
 Drawing Date:

Drawn By:  
 Drawing Revised:  
 04/07/2019

NTS @ A3  
 09/04/2019

Notes  
 Addresses not marked on the plan  
 Chromazones: 1.211, 1.221, 1.231  
 Hazers: SR-2.500, SL-2.503

Gel Colour guide:  
 L120 - Deep Blue  
 L119 - Dark Blue  
 L228 - Brushed Silk  
 R119 - Light Hamburg Frost

Soca lengths  
 A: 20m  
 B: 20m  
 C: 30m  
 D: 20m  
 E: 20m + 10m

F: 20 + 20m  
 G: 20m  
 H: 30m  
 J: 30m  
 S: 20m 2.5mm +  
 10m 2.5mm

Key

	Source4 PAR 13-row 750W		Source4 Zoom 15-30 750W		MAC Aura XB - 25ch
	Hui Flood		Source4 750W		D&B Q7
	1.2kW Fresnel		Chromazone		DMX Splitter
			MAC Quantum - 27ch		Ayrton S3 Nandobeam