

## Certificate of Analysis

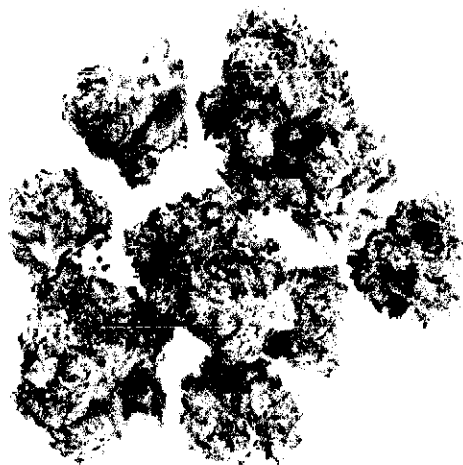
For R&D Use Only - Not a California Compliance Certificate

# Cadillac Rainbow

Client: Pure Leaf Distribution  
Sample Name: Cadillac Rainbow  
Batch Number: PLD101824CR

Matrix: Plant  
Unit Mass: 1 g per unit

Sample ID: 47441018-2  
Date Received: 10/18/2024



Total CBD	ND
Delta 9-THC	0.28 %
THCA	31.97 %
Total Cannabinoids	32.24 %

### Analysis Summary

Residual Pesticides	Pass
Mycotoxins	Pass
Heavy Metals	Pass
Microbial Impurities	Pass

### Cannabinoid Analysis

Complete

Analyte	LOD (%)	LOQ (%)	Mass (%)	Mass (mg/g)
CBDV	0.0035	0.011	ND	ND
CBD	0.0030	0.0090	ND	ND
CBG	0.0038	0.011	ND	ND
CBDa	0.0017	0.0052	ND	ND
CBN	0.0080	0.0024	ND	ND
Delta 9-THC	0.0000	0.0067	0.279	2.79
Delta 8-THC	0.0020	0.0059	ND	ND
CBC	0.00070	0.0021	ND	ND
THCA	0.0024	0.0073	31.966	319.66
Total CBD			ND	ND
Total THC			28.31	283.13
Total Cannabinoids			32.24	322.44

Date Tested: 10/18/24

Total THC = THCa \* 0.877 + d8-THC, Total CBD = CBDa \* 0.877 + CBD

*Marie True*  
Approved By:  
Marie True, M.S.  
Laboratory Manager

This certificate of analysis is responsible for the tested sample only and is for research and development (R&D) use only. This certificate of analysis shall not be reproduced, except in its entirety, without the written approval of FESA Labs. FESA Labs shall not be liable for any damage that may result from the data contained herein in any way. FESA Labs makes no claim to the efficacy, safety or other risks associated with any detected or non-detected amounts of any substances reported herein. If there are any questions with this report please email [info@fesalabs.com](mailto:info@fesalabs.com). This certificate of analysis is intended only for the use of the party to whom it is addressed and may contain information that is confidential or protected from disclosure under applicable law. If you have received this document in error, please immediately contact us.

References: limit of detection (LOD), limit of quantitation (LOQ), not detected (ND), not tested (NT)

### FESA Labs

2002 South Grand Avenue Suite A  
Santa Ana, CA 92705  
(714) 540-0172  
[www.fesalabs.com](http://www.fesalabs.com)