

# PLAYBILL®

ETHEL BARRYMORE THEATRE

# ELLING



OPENING NIGHT: NOVEMBER 21, 2010

# Ⓢ **ETHEL BARRYMORE THEATRE**

243 West 47th Street

A Shubert Organization Theatre

**Philip J. Smith, *Chairman***

**Robert E. Wankel, *President***

**Howard Panter for Ambassador Theatre Group Robert G. Bartner Bill Kenwright**

**John O'Boyle Deborah Taylor Burnt Umber**

**Finola Dwyer Elling Ellingsen and Magnus Karlsen**

**Bill Ballard/David Mirvish Ronnie Planalp Toledo Productions**

**Lorenzo Thione Jay Kuo Harris Karma Productions**

**Jayne Baron Sherman Robert Driemeyer Cameron/Mathieu and Dodger Theatricals**

**in association with Bob Boyett**

Present

**Brendan Fraser Denis O'Hare**

in

**ELLING**

New English Adaptation by **Simon Bent**

Based on the novels by **Ingvar Ambjørnsen**

Stage and Film Adaptation by **Axel Hellstenius** in collaboration with **Petter Næss**

with

**Jennifer Coolidge**

**Richard Easton**

**Jeremy Shamos**

Scenic Design  
**Scott Pask**

Costume Design  
**Catherine Zuber**

Lighting Design  
**Kenneth Posner**

Original Music & Sound Design  
**David Van Tieghem**

Hair & Wig Design  
**Tom Watson**

Casting  
**Jim Carnahan, CSA**

Production Stage Manager  
**Barclay Stiff**

Press Representative  
**Boneau/Bryan-Brown**

Production Management  
**Aurora Productions**

Associate Producer  
**Tali Pelman**

General Management  
**Stuart Thompson Productions/  
Marshall B. Purdy**

Executive Producer  
**David Lazar**

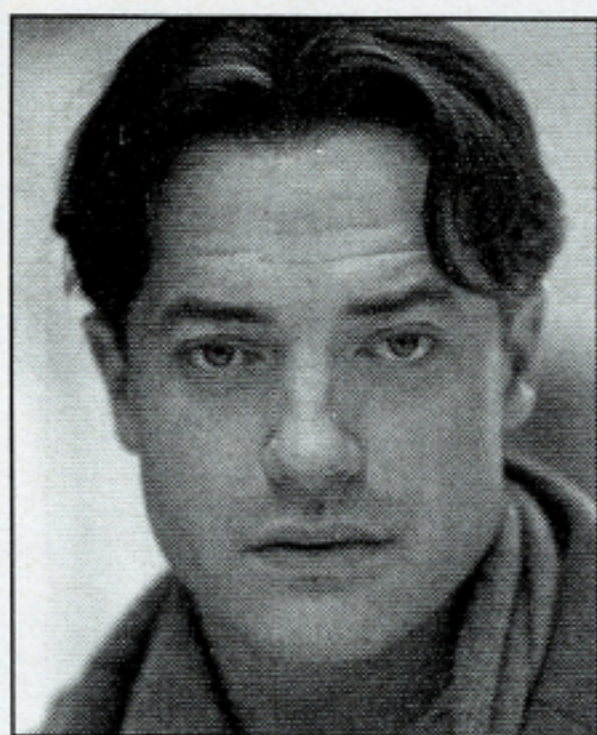
Directed by  
**Doug Hughes**

Originally presented on London's West End by Howard Panter for ATG, David Parfitt for Trademark,  
Finola Dwyer and Tulchin/Bartner Productions

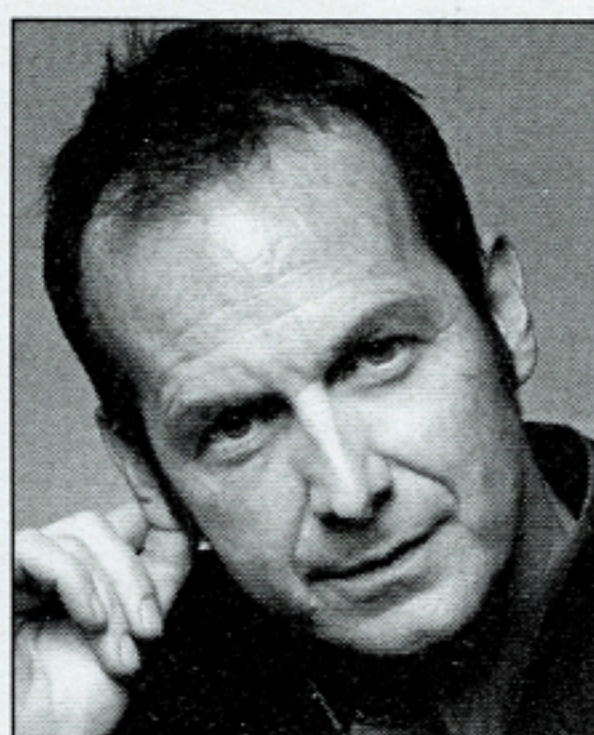
The Producers wish to express their appreciation to Theatre Development Fund for its support of this production.







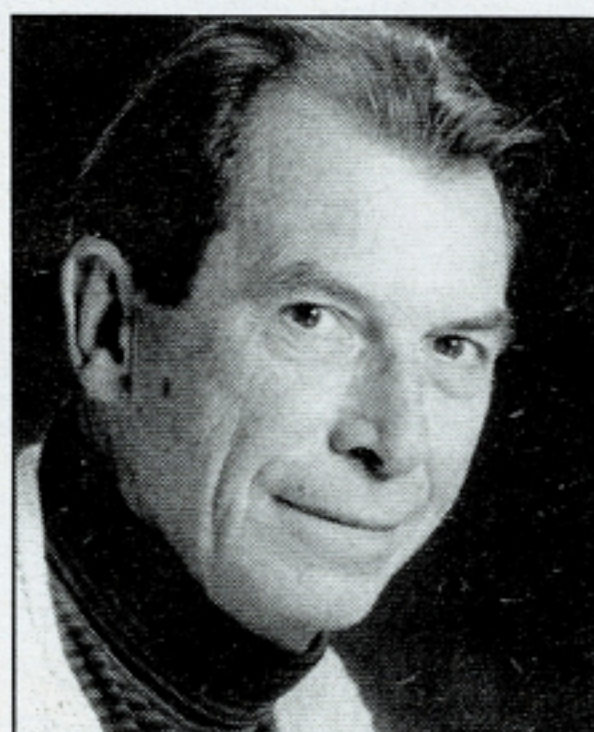
Brendan  
Fraser



Denis  
O'Hare



Jennifer  
Coolidge



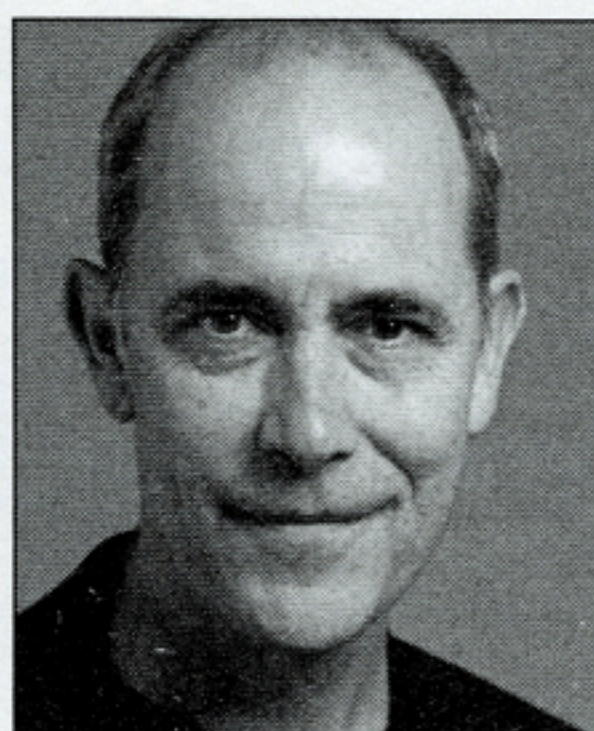
Richard  
Easton



Jeremy  
Shamos



Ted  
Koch



Robert Emmet  
Lunney



Lusia  
Strus

**LUNCH, DINNER & AFTER THEATER**  
**Cocktails and Dessert**

*Sardi's*

**234 West 44th Street**  
**(Broadway & 8th)**  
**(212) 221-8440**  
**[www.sardis.com](http://www.sardis.com)**



---

# CAST

(in order of appearance)

Kjell Bjarne .....BRENDAN FRASER  
Elling .....DENIS O'HARE  
Reidun Nordsletten, Gunn, Johanne, Poet .....JENNIFER COOLIDGE  
Frank Asli, Poet .....JEREMY SHAMOS  
Alfons Jorgensen .....RICHARD EASTON

## TIME:

The Present

## PLACE:

Oslo, Norway

ELLING WILL BE PERFORMED WITH ONE 15-MINUTE INTERMISSION.

## STANDBYS

Standbys never substitute for listed performers  
unless a specific announcement is made at the time of the performances.

For Kjell Bjarne, Frank Asli: TED KOCH; for Elling, Alfons Jorgensen: ROBERT EMMET LUNNEY; for Reidun Nordsletten: LUSIA STRUS.



The use of any recording device, either audio or video, and the taking of photographs, either with or without flash, is strictly prohibited. Please turn off all electronic devices such as cellular phones, beepers and watches. The use of cell phones in the theatre is prohibited by New York City law.

---

**Your Ticket To Broadway**  
**playbillclub.com**

**Can't get enough theatre?**

Join the **free** Playbill Club and receive **daily discounts** on shows, **exclusive** member events and pre-sale **ticket** announcements. Visit [playbillclub.com](http://playbillclub.com) to find great offers on restaurants, Broadway merchandise, and **more!**

**PLAYBILLCLUB.COM**

Playbill.com is a trademark of Playbill Inc.



# WHO'S WHO IN THE CAST

**BRENDAN FRASER** (*Kjell Bjarne*). Elling marks Mr. Fraser's Broadway debut. Theatre: *Cat on a Hot Tin Roof*, West End; *Four Dogs and a Bone*, opened the Geffen Playhouse in Los Angeles. Film: *Crash*, *Gods and Monsters*, *Extraordinary Measures*, *Journey to the Center of the Earth 3-D*, *The Mummy Trilogy*, *Ink Heart*, *The Air I Breathe*, *Monkeybone*, *The Quiet American*, *Bedazzled*, *Blast From the Past*, *George of the Jungle*, *The Scout*, *Airheads*, *Encino Man*, *School Ties*. TV: "Scrubs," "King of the Hill," "The Simpsons," "Saturday Night Live" (host). BFA, Cornish College.

**DENIS O'HARE** (*Elling*). Broadway: *Inherit the Wind*, *Sweet Charity* (Drama Desk Award, Outer Critics Circle Award nomination), *Assassins* (Tony Award nomination), *Take Me Out* (Tony, Drama Desk, Outer Critics Circle, Clarence Derwent Awards), *Major Barbara*, *Cabaret*, *Racing Demon*. Off-Broadway: *Uncle Vanya*; *A Spanish Play*; *Pig Farm*; *Take Me Out* (Obie, Lucille Lortel Awards); *Vienna: Lusthaus*; *Helen*; *Ten Unknowns*; *The Devils*; *Silence*, *Cunning*, *Exile*; *The Arabian Nights*; *Lonely Planet*; *Woyzeck*; *Hauptmann*. Regional: Hartford Stage, NYS&F, CenterStage, Seattle Repertory, Arena, McCarter, Long Wharf, Goodman. London: *Never the Sinner*, *Take Me Out*. Film: *Edge of Darkness*, *The Proposal*, *Duplicity*, *An Englishman in New York*, *Brief Interviews With Hideous Men*, *Milk*, *Quarantine*, *Changeling*, *Baby Mama*, *Pretty Bird*, *Charlie Wilson's War*, *Awake*, *The Babysitters*, *Michael Clayton*, *Train Wreck*; *My Life as an Idiot*, *A Mighty Heart*, *Rocket Science*, *Half Nelson*, *Stephanie*

*Daley*, *Derailed*, *Heights*, *Garden State*, *21 Grams*, *The Anniversary Party*. Denis will also soon be seen in Kevin MacDonald's *The Eagle*. Television: "True Blood," "CSI: Miami," "The Good Wife," "Brothers & Sisters," "Once Upon a Mattress," "Law & Order," "100 Centre Street," "Hamlet." For Karene.

**JENNIFER COOLIDGE** (*Reidun Nordsletten*, *Gunn*, *Johanne*, *Poet*). This is Ms. Coolidge's second production on Broadway, having previously appeared in the Roundabout Theatre Company's production of *The Women*. She is best known for playing Stifler's Mom in the *American Pie* movies. Other film credits include *Legally Blonde*, *Best in Show*, *A Mighty Wind*, *For Your Consideration*, *Click*, *Gentlemen Broncos* and Werner Herzog's *The Bad Lieutenant*. Television credits include "Seinfeld," "Frasier," "Friends," "Nip/Tuck," "Sex and the City" and "The Secret Life."

**RICHARD EASTON** (*Alfons Jorgensen*). One of Theatre World's "Most Promising Personalities" of 1957-58 and a 2008 Theatre Hall of Fame inductee. Broadway: *The Coast of Utopia*, *The Rivals*, *Henry IV*, *Noises Off*, *The Invention of Love* (2001 Tony, Drama Desk, Outer Critics Circle Awards for Leading Actor), *Back to Methuselah*, *The Country Wife*, *School for Scandal*, *The Misanthrope*, *Exit the King*, *The Cherry Orchard*, *Hamlet*. Off-Broadway: *New Jerusalem*; *Entertaining Mr. Sloane* (Outer Critics Circle Award nomination); *Bach at Leipzig*; *Echoes of the War*; *Observe the Sons of Ulster...*; *Hotel Universe*; *Waste*; *Give Me Your Answer, Do!*; *Salad Days*. BAM: inaugural season of

# SD26

## SD26 Restaurant & WineBar

*We are open for supper after the show*

*"SD26 Combines Fabulous Food with probably the snazziest contemporary interior you've seen in a long time."*

\* Forbes Magazine, 12/09

19 East 26th Street, New York  
T. 212 265 5959 [www.SD26ny.com](http://www.SD26ny.com)  
[reservations@SD26ny.com](mailto:reservations@SD26ny.com)