

Rotherham Parents Forum Ltd

Annual Impact Report

April 2021 to March 2022

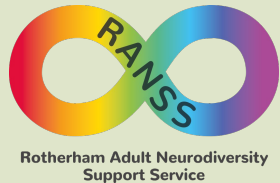
Lived experiences into Strategic Priorities

www.rpcf.co.uk

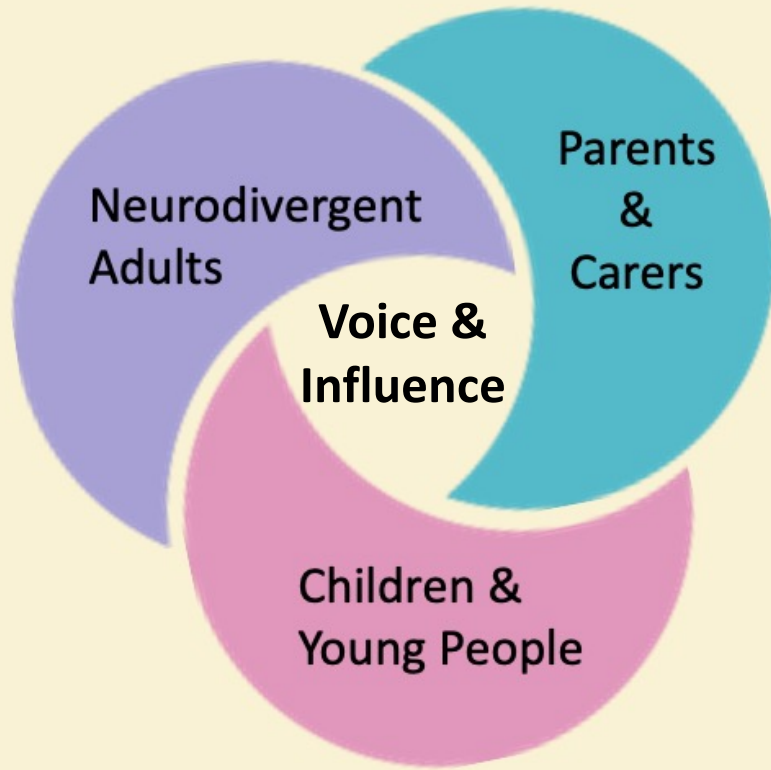
www.ranss.co.uk

tel: 01709 296262

email: admin@rpcf.co.uk



Rotherham Parents Forum Limited



Our Vision

Working in particular, but not exclusively with children and young people and their parents, carers and families in Rotherham, our vision is that people with special educational needs and/or disabilities are not isolated and have equal opportunities to achieve their full potential in life and participate fully in society.

Our Mission

Our mission is to take positive action in Rotherham to promote social inclusion among disabled people and those with special needs and their parents, carers and families who are socially excluded from society or parts of it because of their disability. We will achieve this by providing forums, advocacy, workshops and general support and raising public awareness to ensure that individuals are recognised, heard and supported to overcome the inequalities they might face.



Rotherham Parents Forum Limited

Our Values – Genuine Partnerships and the 4 Cornerstones

Welcome and Care

We are determined to create a community where everyone feels as though they belong.

Partnership

We bring people together to work in co-production, by sharing, learning, working and contributing together to achieve so much more



Everything we do is underpinned by our values which when embedded strengthen TRUST

Value and Include

We value difference, and no-one is left out and we include each other, especially in the things that involve us directly.

Communication

We take time to understand each other, however we may communicate.



Impact of the Cornerstones on our Families

“You are welcomed with open arms and are made to feel like part of the family. No one bats an eyelid when your child goes into meltdown no one judges you.” (Parent)

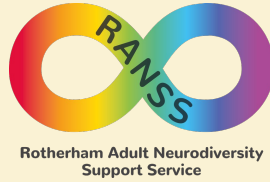


“I like how inclusive jumps stars is. It provides a safe place for young people like me to be themselves.
(aged 15 with SEND)

“I am very grateful that the forum exists as it has been amazing to talk to someone that gets it, I feel like I am in a better position to advocate for my child. i feel far stronger and more able to face the challenges that our family is experiencing.” (Parent)

Everything we do is underpinned by our values which when embedded strengthen TRUST

“I enjoyed that it was over zoom which meant that we had the option to speak verbally or type what we wanted to say as sometimes I find it easier to communicate through written text”
(Neurodivergent Adult)

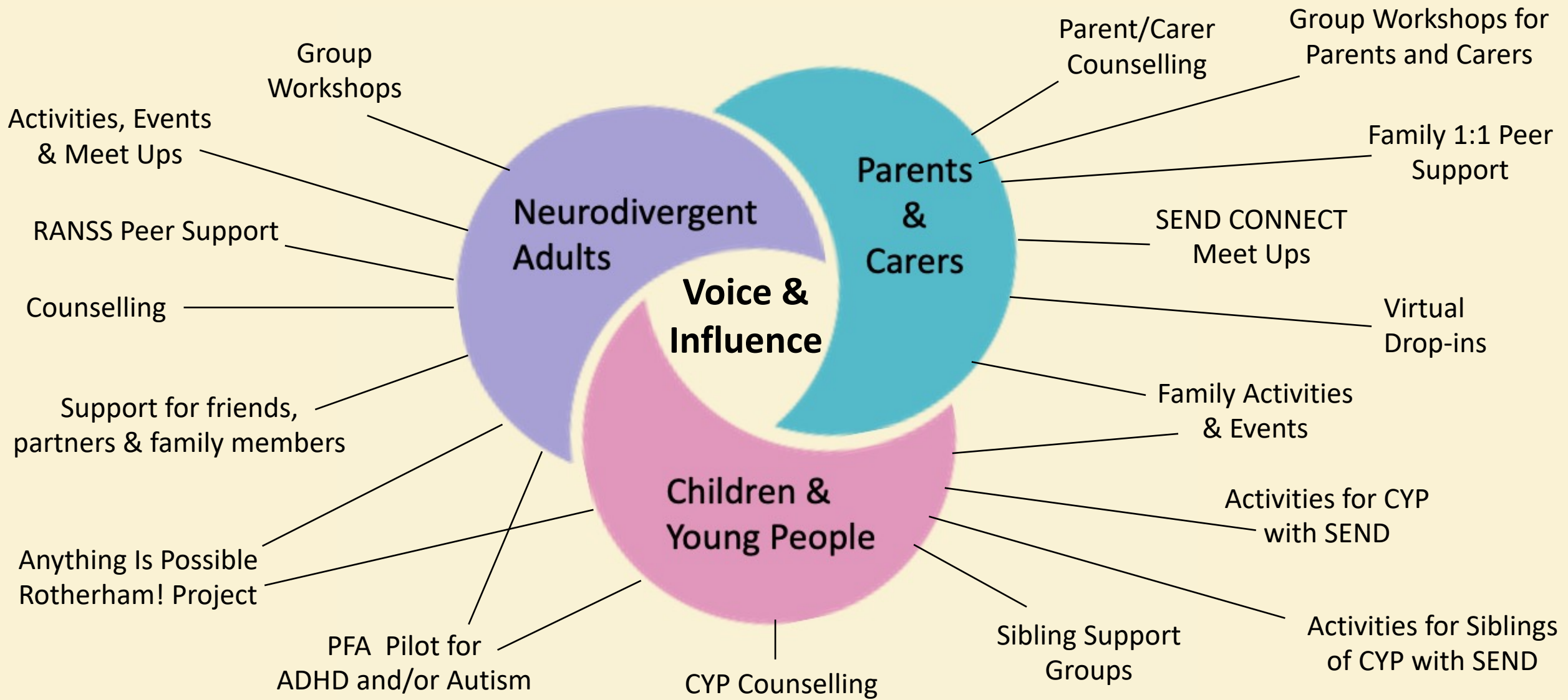


**Registered
Volunteers
across all
teams**

45



Organisation Model and Workstreams



Our Strategic Aims

To be less isolated.

To increase resilience and confidence in both daily life and interactions with services.

To impact strategic direction through lived experience and in equal partnership.



Impact Feedback Reducing Isolation

“After years of feeling alone I feel that I have finally found people that understand how I feel and can offer me that information and advice that I need.” (Parent Carer)

“lovely meeting other in the same situation who just get what it like living with a young person with Send” (Parent Carer)

“Without this service I would be suffering in silence” (Parent Carer)

“You guys are incredible. You have really helped me to come to terms with my diagnosis, you've helped put things into perspective and I have learned a lot more about myself. I feel less alone, I am moving forward and making progress. I have enjoyed our talks.” (Neurodivergent Adult)

“Jump Stars makes me happy, excited, and able to socialise with people who understand.” (12-year-old with SEND)



Impact Feedback

Increasing Resilience & Confidence

"I always feel better after talking to peer support as they understand the issues that we face as a family and help me to see things from a different perspective." (Parent Carer)

"It's been so validating and built my confidence. It's been educational and grounding. I've learnt I'm not stupid and it's just how my brain works." (Neurodivergent Adult)

"I feel like I have my little girl back, I felt like I was thrown a life raft that has helped us turn our lives around in a very short space of time." (Parent Carer)

"Counselling has helped me to understand more about my anxiety and I've learnt coping mechanisms and distraction techniques which have also helped." (CYP)

They have been fab! Couldn't of done it without them! To say I was this massive bundle of anxiety and refused to talk the first three or four times ...I've noticed myself I've grown in confidence which I've always lacked and it's from brilliant help and support plus meeting others that are in the same position!" (Parent Carer)



RPCF Voice into Strategy

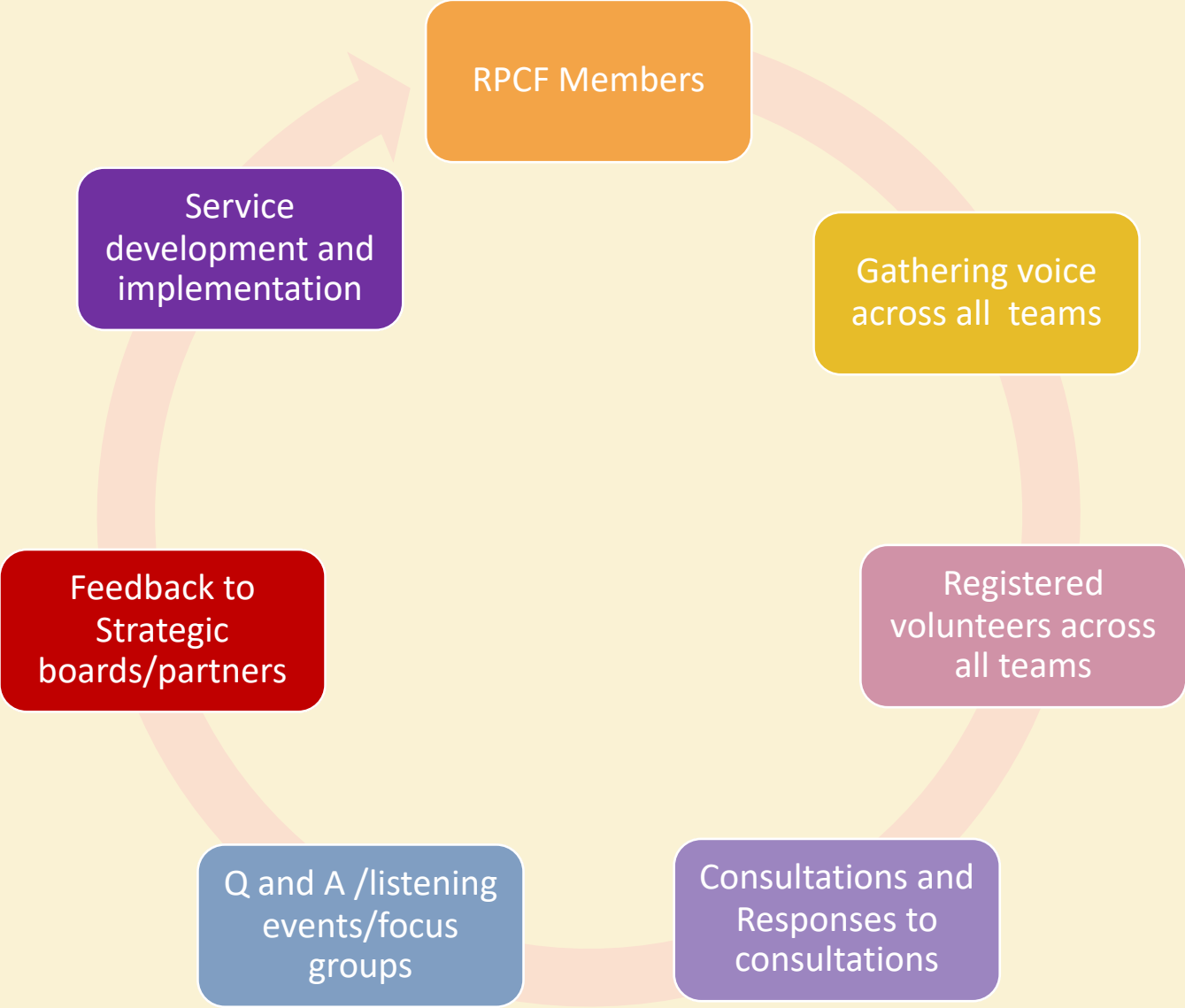
RPCF members highlight priorities from sharing experience via social media and direct contact with staff and volunteers through peer support (inc drop in), activities, admin and counselling services.

To ascertain common priorities resulting from lived experience, timed consultations and focus groups are facilitated.

Q&A/listening events from consultation responses are half termly, with an opportunity for families to meet heads of service, gaining understanding of service development and impact of their voice as equal partners.

Findings/reports are shared with relevant colleagues and at relevant boards, feedback to families with next steps and outcomes

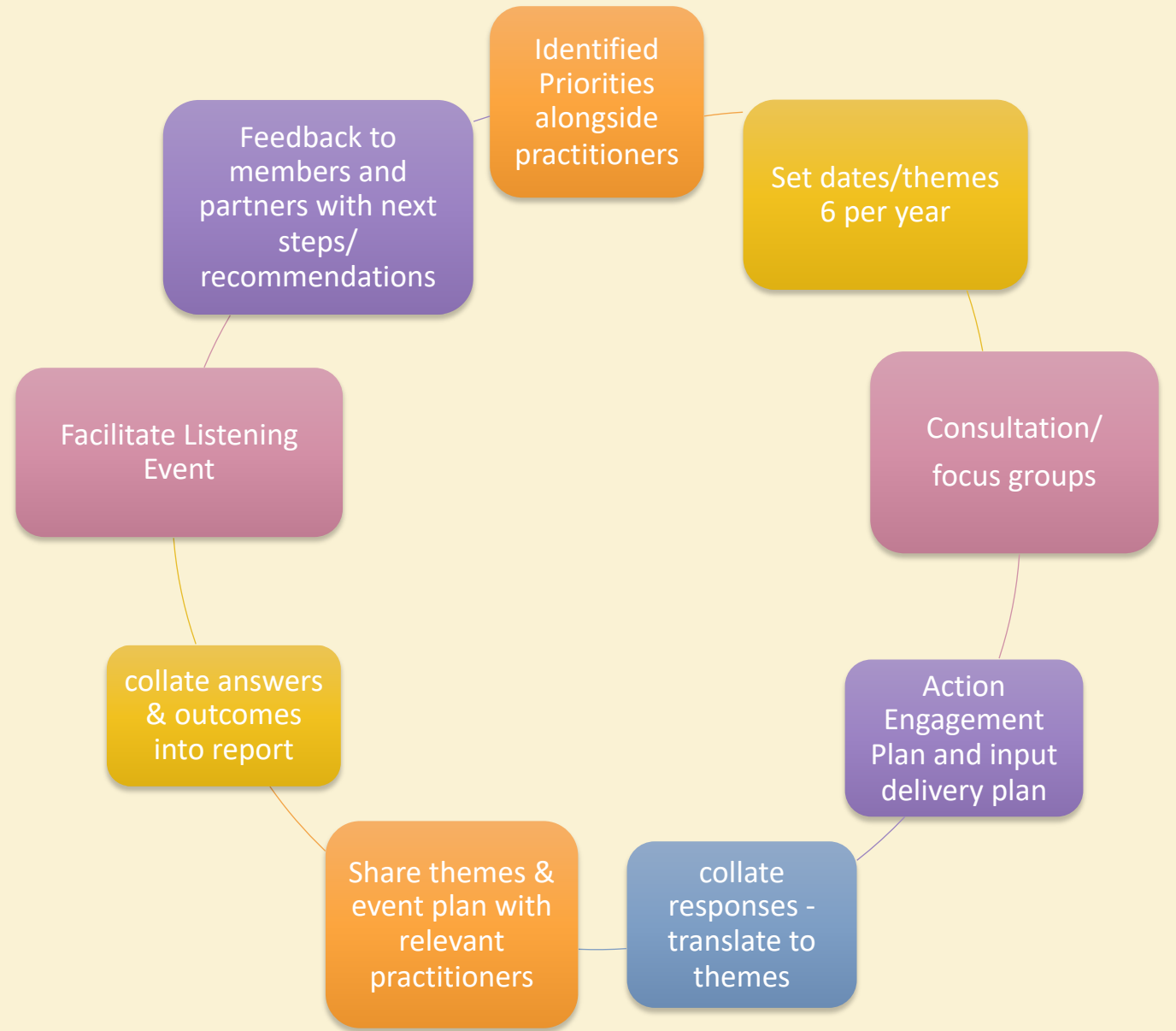
Strategy and Participation



Gathering Voice from all areas to Impact Strategy



Q & A and Listening events process



Consultations and Listening Events Facilitated

224 individual
responses
collated

Social, Emotional and Mental Health Experiences Amongst Children and Young People Within Rotherham - April 2021

Access to Rotherham Mental Health services consultation
April 2021

SEMH Free School Listening Event - June 2021

Local Area SEND Inspection Consultation - Nov 2021

SEND Inspection WSOA Listening Event – Jan 2022

SEMH Free School - Next Steps March 2022

Local Offer Feedback Consultation - Feb/Mar 2022



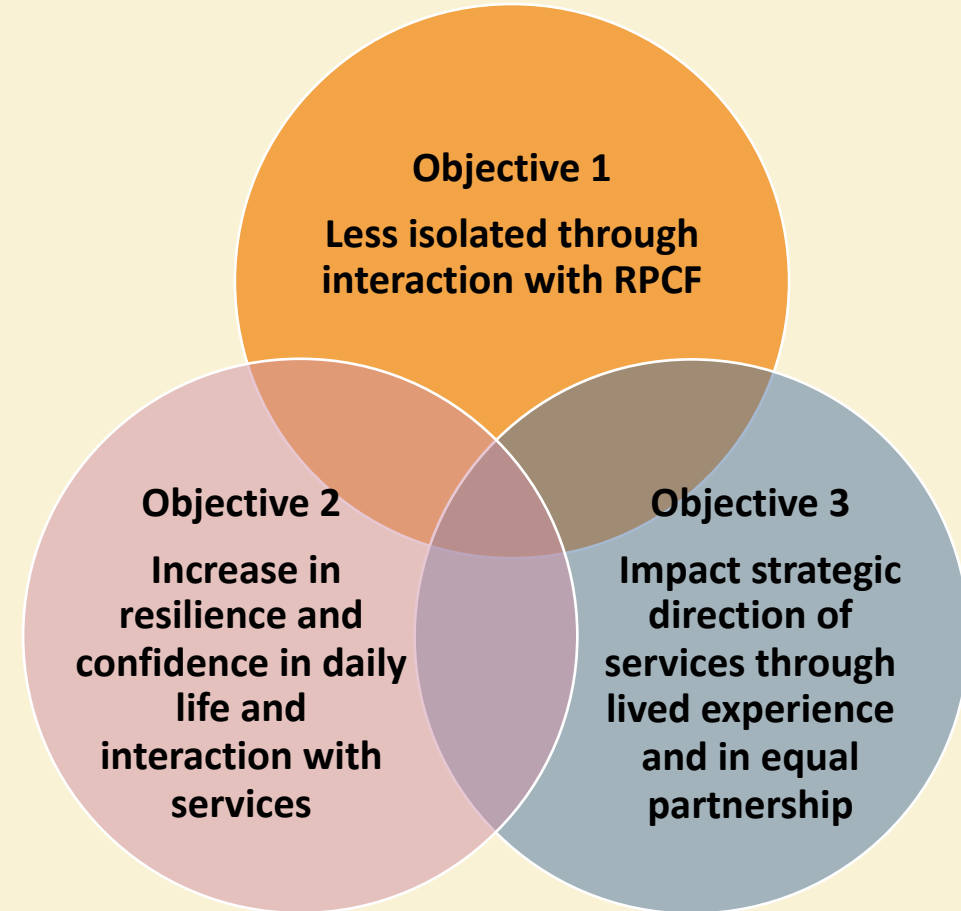
Some Impact of strategic direction through sharing lived experience

- ❖ Action plans re WSoA – all 4 areas in response to voice from consultations, listening event
- ❖ Parent current priorities/themes of lived experience shared at monthly 1:1 with strategic leads and CYPS cabinet member. Quick wins and early intervention
- ❖ Refreshed/coproduced SEND strategy
- ❖ Refreshed/coproduced SEMH strategy
- ❖ Senco online resource – (Graduated response)
- ❖ Implementation of cornerstones included in service specs
- ❖ SEMH free school process, selection and provider – methodology throughout in coproduction with lived experience and what good looks like for families.
- ❖ Commissioners implementing recommendations and 4 Cornerstones of coproduction in service specs



Changing Lives by Embedding Genuine Partnership at Individual Family Level, Operational and Strategic Level

Impact of coproduction and sharing lived experience = better outcomes for CYP with SEND and their families, less time navigating the maze and more time to live your amazing life

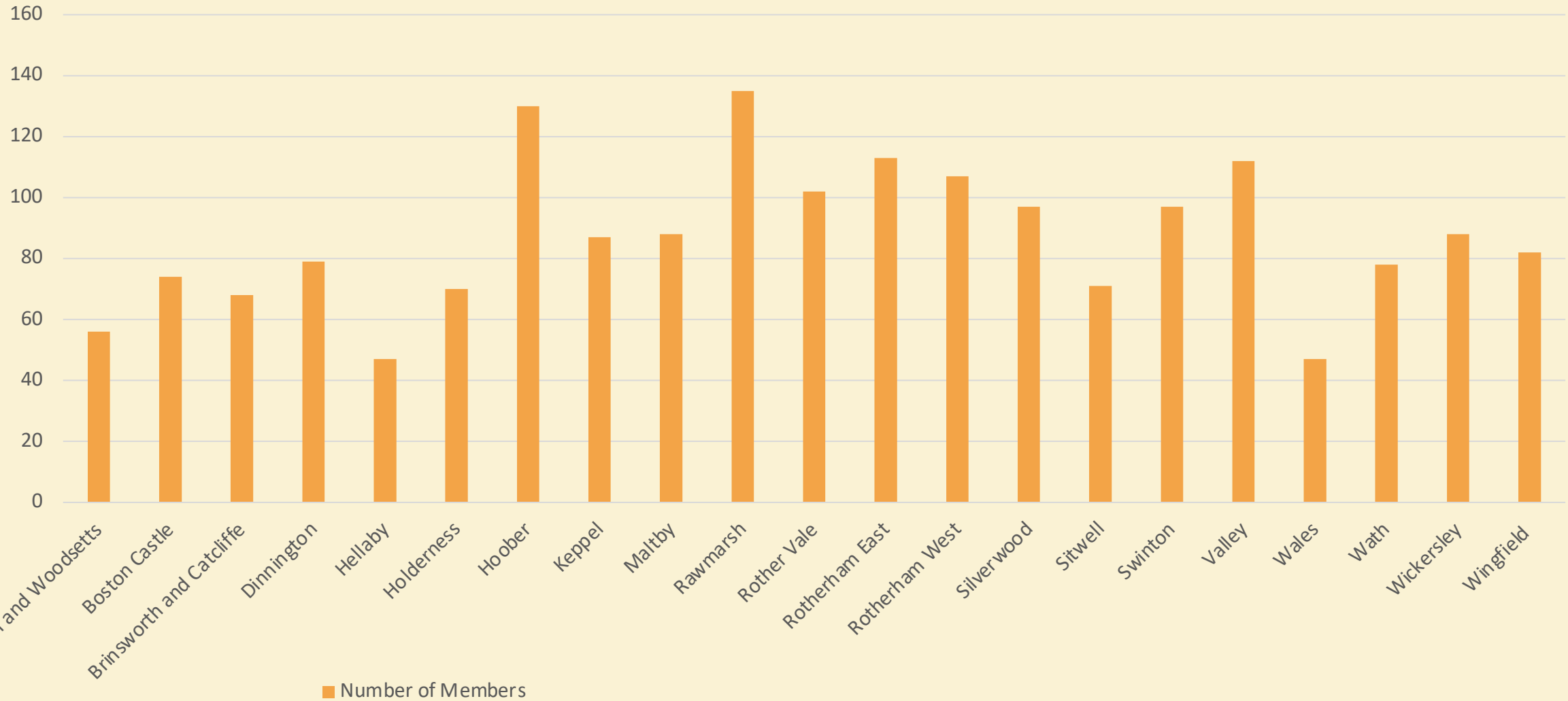


RPFC Membership Data - April 2021 to March 2022

- ❖ Rotherham Parent Carers Forum has **1828** registered members in Rotherham
- ❖ **383** new members signed up between April 2021 and March 2022
- ❖ According to the Index of Multiple Deprivation (IMD) **27%** of our families are living in the most deprived (top 10%) of neighbourhoods in England. This is higher than the comparable rate for Rotherham of 22%.
- ❖ **60%** our families are living in the most deprived 30% of neighbourhoods in England (IMD deciles 1 OR 1, 2 and 3) This is higher than the comparable rate for Rotherham of 49%.



Number of Members Across Different Wards in Rotherham



Rotherham Parents Forum Limited

Parents and Carers Summary – April 2021 to March 2022

- ❖ **231** opportunities for parent participation were facilitated over the year including virtual drop-ins, face-to-face meet-ups, Listening Events, Family Activities and SEND events.
- ❖ The total number of parent/carers attendances at these participation events was **1540**.
- ❖ **169** unique families were actively supported through Family Peer Support sessions.
- ❖ **37** Group training workshops were delivered in the areas of Managing Anxiety, Advocating for your Child, Emotional Regulation, Sensory Differences and Communication.
- ❖ Through SEND Connect meet-ups and engagement phone calls and our virtual drop-ins, we were able to support **122** unique parents and carers.
- ❖ Towards the end of the year, following the lifting of restrictions, we were able to restart the parent carer counselling sessions.



Children & Young People Summary – April 2021 to March 2022

- ❖ **282** unique Children/Young People with SEND accessed RPCF Activities
- ❖ **27** unique siblings of Children/Young People with SEND accessed RPCF Activities
- ❖ **32** unique Children/Young People with SEND or their siblings accessed RPCF Counselling Sessions
- ❖ A total of **186** Counselling Sessions for children and young people were delivered.
- ❖ We had a total of **1156** attendances at RPCF activities from children/young people with send and 185 attendances from siblings across a total of **103** delivered sessions.
- ❖ **19** unique siblings of Children/Young People with SEND took part in special Sibling Support Sessions with total attendances of **79**.
- ❖ **192** families applied for Max Cards through RPCF giving them discounts for family days out.



Neurodivergent Adults Summary – April 2021 to March 2022

- ❖ **122** unique newly diagnosed adults accessed post diagnostic support through all or some of the following; group workshops, peer support, activities, meet ups and counselling.
- ❖ A further **19** unique neurodivergent adults accessed the activities and events.
- ❖ RANSS delivered **654** post-diagnostic support sessions including counselling, peer support and group workshops as well as **133** activity and meet up sessions.
- ❖ The ages of neurodivergent adults accessing RANSS range from 18 to 65. 57% of the adults who worked with us are in employment or education and 49% of the adults who worked with us live with family or friends.
- ❖ According to the Index of Multiple Deprivation (IMD) **27%** of RANSS service users are living in the most deprived (top 10%) of neighbourhoods in England. This is higher than the comparable rate for Rotherham of 22%.
- ❖ **58%** of RANSS service users are living in the most deprived 30% of neighbourhoods in England (IMD deciles 1 OR 1, 2 and 3) This is higher than the comparable rate for Rotherham of 49%.



Impact Extract From Joint Area SEND Inspection in Rotherham – July 2021

“Rotherham Parent Carers Forum is the jewel in the crown of the provision for SEND in Rotherham’s local area. Members truly understand co-production and advocate for it. They seek stakeholders’ views, whether they are children and young people, parents and carers, special educational needs and/or disabilities coordinators (SENCOs) or commissioners. Members are passionate, committed and act with the highest integrity. They are uncompromising, tell it like it is and are a force to be reckoned with. The forum has meetings with commissioners regularly and tells them about children and young people’s and their families’ lived experience. In this way, the forum makes sure that children and young people’s and their families’ voices are heard. Rotherham Parent Carers Forum is a pivotal partner in the co-production of services for children and young people with SEND in the local area.”



Rotherham Parents Forum Limited