

# Child Life: Serving Children in the Community

Colleen M Cherry MSCL CCLS CT GCCA-C  
PlayWell Child Life Services

CACLP Conference July 27,,2024



# Today's Agenda

## Where to Start:

Define: Community

Define: Self

Define: Image



## Next:

Making Connections

Program Plan

Contracts, MOU



## Session:

Assessment

POC

Implementation





# Community

- Location:  
City, County, Office, On-site
- Population:  
Age, Diagnosis, Palliative, Hospice, Grief
- Connections:  
Current, New, Professional, Personal
- Availability

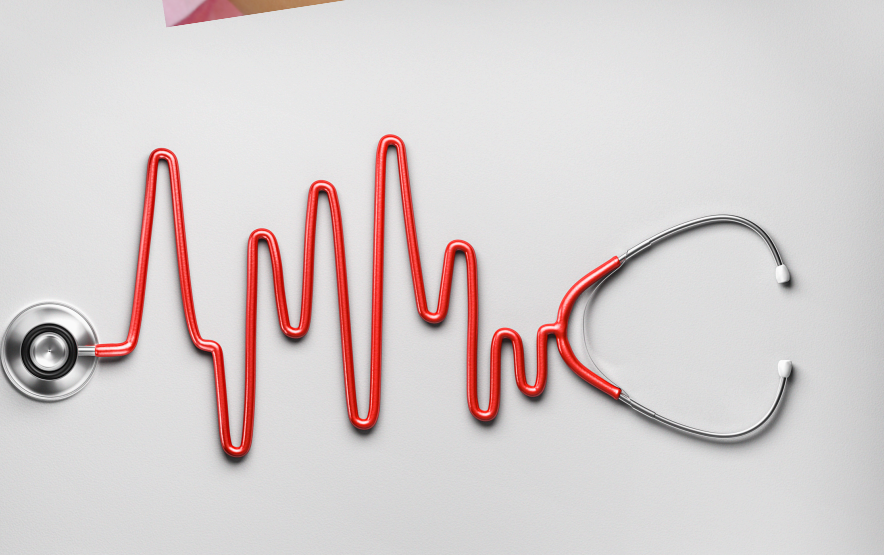
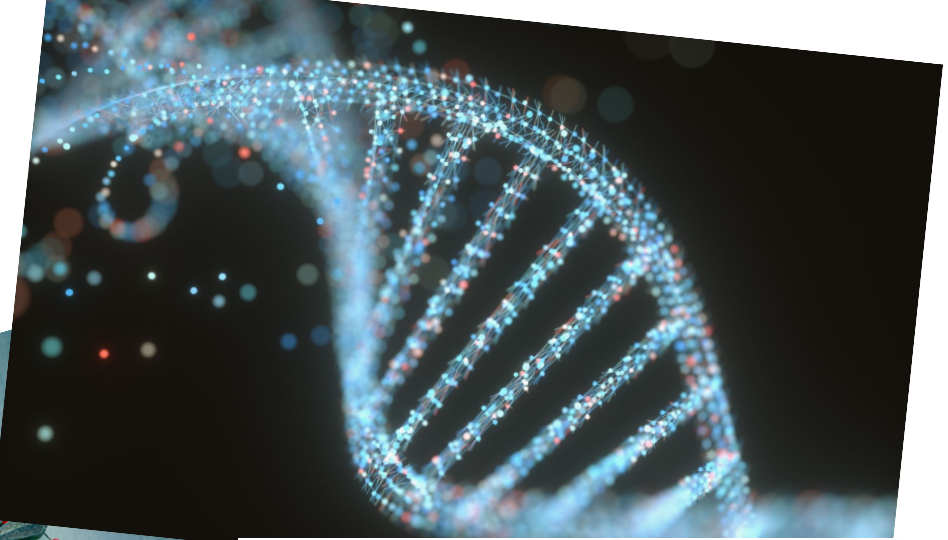




# Self: Who You Are

- Area of Expertise:  
Trauma, Grief: training, experience, certifications
- Population:  
Preferred vs Available
- Ability to Adapt
- Purpose
- Availability

Image





# Program Plan

With an Organization-

- One page synopsis including costs
- Execution per site parameters
- Short and long-term goals: 3, 6, 12 months, 5, 10 years
- Include funding sources: foundations, grants, major donors
- Material sources, costs

# Program Plan

## Private Practice-

- Budget: materials, insurance, IRA, conferences, phone, website, vacation, session time
- Intervention Protocol: If someone had to fill in...
- Scope of practice: palliative, hospice, grief
- Goals: Practice, professional, personal





# Contracts & MOU

**MOU:** An understanding or agreement between two or more parties. Unlike a contract, however, an MOU need not contain legally enforceable promises.

**Contract:** Must intend to create a legally binding agreement.





## Session: One

- Initial contact:  
data collection; by phone or in-person
- Introductory Session:  
Assessment, general coping and expressive interventions.
- Possible Specific teachings:  
diagnosis, end of life, grief

# POC: Plan of Care

- Developmental level
- History: specific and general to child, family
- Shared information by parents to child
- Family practices, routines
- Family beliefs, Child's beliefs of event



# Implementation

- Play: Based on child's interests, events
  - during conversations, information gathering
  - explaining medical care, exploration of information
  - exploring options, reactions, responses
  - implementing coping and expressive interventions
  - continued bonds: not just for end of life
  - additional sessions at life events or developmental thresholds





Playwell

Child Life Services

Colleen M Cherry MSCL

CCLS CT GCCA-C

playwellchildlife.com

[playwellchildlife@gmail.com](mailto:playwellchildlife@gmail.com)

*'You can discover more about  
a person in an hour of play  
than in a year of conversation'*

*Plato*

Let's Play!