

Rebar Processing Equipment



Designed & Developed in **BHARAT**
Made for the **WORLD!**

BAR BENDING MACHINE

KBM45 / KBM52 / KBM55



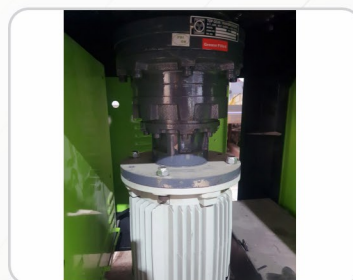
- ✔ KAIZEN bending machines are designed as per European safety standards.
- ✔ Rigid design which helps maintain the performance of the machine year after year.
- ✔ Machine's rugged design is suitable for every site condition and increases the production capacity.
- ✔ Reduce manpower to maintain low cost of production.
- ✔ Machines manufactured in large batches, under tight quality control environment and are thoroughly tested before shipping.

MODEL	rpm.	Ø Max. 75 kg./mm ²	No. of Bars	Motor Kw (HP)	Bend Wheel Dia. (mm)	Dimensions (mm)	Weight (Kgs.)	Max Bend Radius (mm)	Bush Size (mm)
KBM45	10	Ø 32 Ø 20 Ø 12	1 2 3	3 (4)	300	715 x 1000 x 1040 (h)	330	4D of Ø 25 3D of Ø 32	Ø60, Ø70 Ø100
KBM52	10	Ø 36 Ø 32 Ø 16	1 2 3	3.7 (5)	425	815 x 1100 x 1070 (h)	390	5D of Ø 32 4D of Ø 36	Ø60, Ø70, Ø100, Ø120, Ø160
KBM55	8	Ø 42 Ø 30 Ø 25	1 2 3	5.5 (7.5)	500	925 x 1210 x 1200 (h)	555	6D of Ø 36 5D of Ø 42	Ø60, Ø70, Ø100, Ø120, Ø160, Ø220

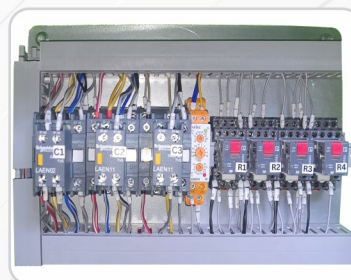
FEATURES BENEFITS FOR OPERATION:



Checking Block & Bushes
Helps achieve accurate bends



Planetary Type Top gear
Low vibration, Power Consumption
& noise level.



Electrical Control Panel
Electrical units for better
performance & durability



Foot Pedal Control Switch
Single Person can operate easily

BAR CUTTING MACHINE

KCM45 / KCM52 / KCM55



- ✔ KAIZEN cutting machines are designed as per European safety standards.
- ✔ Rigid design which helps maintain the performance year after year.
- ✔ Machine's rugged design is suitable for every site condition and increases the production capacity.
- ✔ Designed with higher factor of safety to increase the life of machine and reduce maintenance.
- ✔ Machines manufactured in large batches, under tight quality control environment and are thoroughly tested before shipping.

MODEL	Dimension (L x W x H)	Weight	Stroke/Min.	Motor Capacity	Oil Grade & Capacity
KCM45	1070 x 560 x 865 mm	388 Kg	90	5 HP, 3.7 kW	OMALO 460, 4.25 Ltr.
KCM52	1135 x 740 x 930 mm	550 Kg	60	5 HP, 3.7 kW	OMALO 460, 4.25 Ltr.
KCM55	1225 x 720 x 1025 mm	773 Kg	60	7.5 HP, 5.5 kW	OMALO 460, 6.75 Ltr.

FEATURES BENEFITS FOR OPERATION:



Safety Cover

For operator protection while shearing.



Electric Motor

Use of high efficient crompton greaves, siemens, elcen or equivalent motor.



Cutting Blades

Made from special hardened steel to cut small and big diameter steel rods.



Power Sockets

Easy attachment & more safety

NATIONAL PRESENCE



MANUFACTURING UNIT

375, Gopal Charan Industrial Hub, Kanbha-Bakrol Road,
Indore Express Road, Bakrol G.I.D.C., Ahmedabad-382433.

+91 88490 64288, +91 83204 94959

boltrackengineers@gmail.com



For Sales Inquiry
+91 6353 445 729

For Service In Surat
+91 97257 69701

For Service In Ahmedabad
+91 93289 53807