



# WATCHDOG

76 Spectrum Boulevard Las Vegas, NV 89101

Toll Free: 833-4-THE-DOG (833-484-3364) Fax: 702-944-5355

## EQUIPMENT

### The Renewable Energy Alternative to Conventional Light Towers

## SLT1005-20 "BULLDOG"

### EQUIPMENT HIGHLIGHTS

Limited Lifetime  
Warranty

#### Safety -

- ♦ Integrated Parking Brake
- ♦ Integrated Wheel Chock Holders
- ♦ Motorized Light Mast—Lift/Pan/Tilt
- ♦ Surge Brake on Hitch
- ♦ Mast Safety Pin
- ♦ Heavy Duty Outriggers
- ♦ Polyurea Non Slip Spray
- ♦ Locking Solar Panels

#### Reliability -

- ♦ Zero Maintenance Gel Batteries
- ♦ Top Quality Components
- ♦ 5-3-1 Warranty (see back)
- ♦ Limited Lifetime Warranty

#### Construction -

- ♦ Stainless Steel Hardware/Hinges
- ♦ Full Length 1/4" Steel Fork Tubes
- ♦ 100% Enclosure Powder Coated
- ♦ LED Lighting Throughout
- ♦ Polyurea Spray on Trailer
- ♦ Folding Tow Bar Available

#### Performance -

- ♦ Near Zero Emissions
- ♦ 20 hr runtime when fully charged
- ♦ Wi-Fi Capable for Accessories such as Security Cameras and Sensors
- ♦ Outperforms its Competitors
- ♦ Expandable Platform



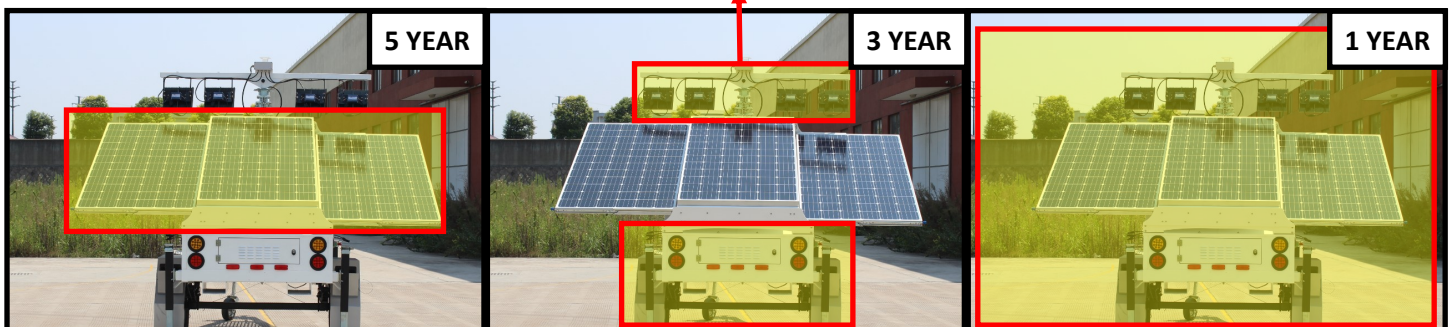
# "BULLDOG" TECHNICAL SPECIFICATIONS

## STANDARD CONFIGURATION

COMPONENT	DETAIL
LED Lighting	4 x 60 Watt
Solar Panel	3 x 335 Watt = 1005 Total Watts
Battery	6 x 150 Ah Maintenance Free GEL Batteries
Tire	Cooper Discoverer 31x10.5R15LT
Rims	15" Steel
Backup Generator	Not available for this model
Unrestricted Wind Speed Rating	62 mph
Mast Raise / Lower	Electric
Mast Light Head Rotation	Electric Rotator
Mast Light Head Tilt	Electric Linear Actuator
Machine Dimensions / Mast Height	13.3'(L) x 5'11" (W) x 8'3" (H) / 20'
Weight	2690lb

## 5—3—1 YEAR NEW EQUIPMENT WARRANTY

### LIFETIME WARRANTY ON LIGHT FIXTURES



### Solar Panels

Solar panel assemblies to include panel frames, glass and PV cells are all warranted to operate as designed at the time of manufacture for 5 years from the date of new equipment sale. Not covered are slide rails, damage, normal wear or finish as well as uncovered items in 3 and 1 Year warranties.

### Frame & Chassis

Frame, equipment cabinet, axle, steel components on the tow bar assembly are all covered by a 3 year warranty from the date of new equipment sale. Not covered under this section are internal components, outriggers, wear items (tires, brakes, etc), damages, normal wear or finish.

### Bumper to Bumper

All components, structural, electrical (wiring, sensors, lighting, etc), hardware, mechanical, safety, etc are covered for 1 year from the date of new equipment sale. Not covered are normal wear items including brakes and tires.

# SLT1005

## Product Feature:

1. 3 x 335W Solar Panel
2. 4 x 200Ah/6 x 150Ah/6 x 200Ah Gel Batteries
3. 24 Volt System
4. 20'/30' Electric/Hydraulic Mast

## TECH SPECS:

### TOWER DIMENSIONS

Length:	13' 3"
Width:	5' 11"
Height:	8' 3"
Weight:	2,690lbs

### TRAILER DETAILS

Trailer Type:	Single Axle
Tire and Rim Size:	15"
Stabilizer Supports:	4xManual
Drawbar:	Fixed or Folding Opt
Tow Hitch:	2" Ball / Pintle Ring
Mud Guard/Wheel Chock:	Integrated w/ Holders
Backup Generator:	Optional
Working Temperature	-31 ~ 140 (F)

# WATCHDOG EQUIPMENT



## "BULLDOG"

### LIGHTING FIXTURE DETAILS

Type of Lights:	LED
Lamp Wattage:	60/100W
No. of lights:	4
Light Output (W) :	240/400/600
Lumens per Watt:	150
Working Life Time(hr):	50000
Light Bar Rotation:	355 Degrees
Light Bar Tilt:	Electric Linear Actuator
Mast Raise/Extension:	Manual/Electric/Hydraulic
Mast Height:	20'/30'
Wind Rating Speed:	62 mph

## SELECTION TABLE:

Code	Solar Panel(W)	LED(W)	Mast		Battery(Ah)	Generator(kW)	Trailer Standard	
SLT1005	4*330W  (fixed angle)	240(4*60W) 400(4*100W) 600(6*100W)	MM  (manual mast)	20'	B800(4*200Ah) B900(6*150Ah)	G3(gasoline 3kW) D3(diesel 3kW) D5(diesel 5kW)	AU/ US/ EU	EB(eletric brake) MB(mechanical brake)
				24'				
				30'				
			EM  (electric mast)	20'	B1200(8*150Ah)	N/A		
				24'				
				30'				
			HM  (hydraulic mast)	20'	B800(4*200Ah) B900(6*150Ah) B1200(8*150Ah)			
				24'				
				30'				



INFO: **833-4-THE-DOG** (484-3364)