



Turkey Tail/Wing Mount Instructions



Fig. 1



Fig. 2

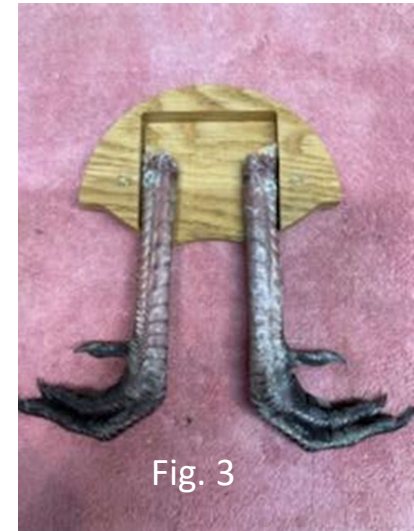


Fig. 3



Fig. 4



Completed Mount

Note: These instructions are to be used as a general guide, proper taxidermy techniques should be followed in relation to skinning, fletching and drying.

Skip step 1 if you are not mounting wings.

1. Start by mounting your wings. Remove the wing mounting bracket from the back of your mount and then remove the front plate and set aside for the next step. Lay the main board face down and then place your wings how you want them oriented (fig. 1). Note: You can staple or hot glue them in place to help hold them until you put the bracket on. Place the bracket over the wings and tighten the screws. (fig. 2)

2. With your Front plate face down position your legs as shown (fig. 3) secure the legs with hot glue (*recommended*) or screws (*use extreme caution not to crack the wood, do not screws that are too long*) you may also attach your beard at this time. Tail: with the main board face up, lay your tail fan and any additional feathers in position (fig. 4). Place your front plate assembly on top of the tail and reinstall the screws.

3. Enjoy your mount.

Note: depending on how many extra feathers you choose to include with your tail fan, you may need longer screws. They are a common 8-32 machine screw that are available at any hardware or home store.