

**FREE  
PATTERN**

**Freshly Made** to bring your ideas to life.

EMMA & MILA

## Simple Pillow (D-039B)

by Emma & Mila

Difficulty Level: Beginner

Finished Size: 17-1/2" x 17-1/2"



ON THE PRAIRIE

Vicky Yorke DESIGNS

Fabric requirements



Front  
30180309P 01  
1/2 yard



Backing  
30180308 01  
1/2 yard

COLLECTION  
Home on the Prairie

Exclusive Pillow Design by Eugene Textile Inc.

The direction of the fabrics in the digital imagery may not be accurate to the final product.

© Vicky Yorke Designs

## OTHER TOOLS & SUPPLIES

- 18" square pillow form
- basic sewing supplies
  - sewing machine
  - iron & pressing surface
  - scissors & fabric shears
  - measuring tape
  - pencil/fabric marker
  - straight pins
  - coordinating thread

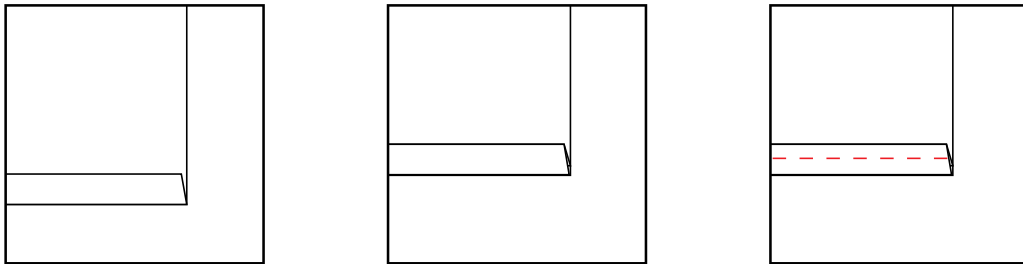
## NOTES

- Please wash, dry & iron your fabric before beginning, and trim selvages.
- Unless otherwise directed, sew all seams with a 1/4" seam allowance.

1. Cut (1) 18" square from your Front fabric.

2. Cut (2) 18" wide x 15" tall rectangles from your Backing fabric.

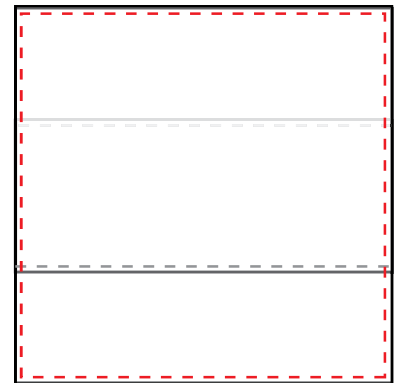
2. Fold & press a 1/4" hem along the bottom edge of (1) Backing piece, Wrong Sides together. Fold again to make a 1/4" rolled hem; topstitch the hem 1/8" from the folded edge.



Repeat along the top edge of the remaining Backing piece.

3. Place your (2) backing rectangles on the pillow front, Right Sides together, so that the backing pieces' rolled hems are overlapping at the center of the pillow. Pin in place.

4. Sew the pillow backing to the pillow front around all (4) sides, backstitching at the beginning & end of the seam, and at the (4) points where the seam passes over one of the rolled hems (for extra strength).



5. Clip your corners and press your seams open.

6. Turn the pillow cover Right Side out through the gap between the Backing panels. Poke out the corners, press the edges lightly and fit it over your pillow form.