

**FREE
PATTERN**

Freshly Made to bring your ideas to life.

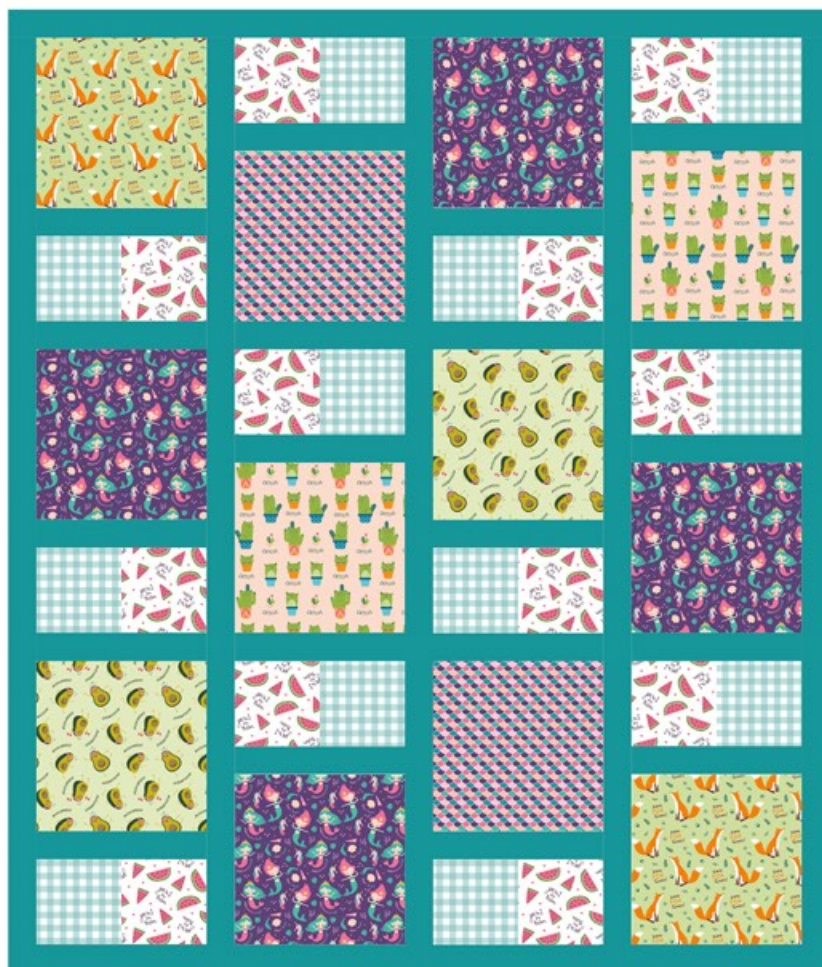
EMMA & MILA

All Squared Up Quilt (Q-037)

by Emma & Mila

Difficulty Level: Beginner

Finished Size: 43.5" x 51"



Fabric requirements



Fabric A: 21181708 01
1/3 yard



Fabric B: 21181711 01
1/3 yard



Fabric C: 21181702 01
1/3 yard



Fabric D: 21181703 01
1/3 yard



Fabric E: 21181705 01
1/3 yard



Fabric F: 21181710 01
1/3 yard



Fabric G: 21007-0043
1/3 yard



Suggested Backing
214-0010
1-1/4 yards



Fabric H (Binding)
214-0034
1-1/4 yards

Exclusive Quilt Design by Eugene Textiles Inc.
The direction of the fabrics in the digital imagery may not be accurate to the final product
© Eugene Textiles Inc. All Rights Reserved.

OTHER TOOLS & SUPPLIES

- Needle and coordinating thread
- Sewing machine
- Iron & pressing surface
- Rotary cutter and mat
- Fabric shears
- Straight pins

NOTES

- For best results, read through all instructions before starting.
- Please wash, dry & iron your fabrics before beginning, and trim selvages.
- Unless otherwise indicated, sew all seams with a 1/4" seam allowance.
- Press your seams open as you go.
- WOF = width of fabric

CUTTING

Fabrics A-B-C-D

- From each fabric, cut (1) 9-1/2" x WOF strip. Sub-cut:
-(2) 9-1/2" x 9-1/2" squares.

Fabric E

- Cut (1) 9-1/2" x WOF strip. Sub-cut:
-(4) 9-1/2" x 9-1/2" squares.

Fabrics F & G

- From each fabric, cut (2) 5" x WOF strips. Sub-cut:
-(12) 5" x 5" squares.

Fabric H

- Cut (6) 2-1/2" x WOF strips. Set aside for binding.
Cut (14) 2" x WOF strips. From (5) of the strips, sub-cut:
-(20) 9-1/2" x 2" rectangles. These will be referred to as the short sashing strips.

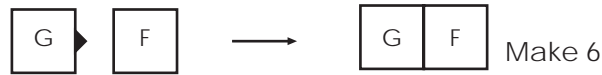
From the remaining strips:

- sew (2) together end-to-end. Trim to (1) 51-1/2" strip. Take the leftover strip and sew it end-to-end to another 2" strip. Trim again to 51-1/2". Continue in this manner to make (5) 51-1/2" x 2" strips. These will be referred to as the long sashing strips.

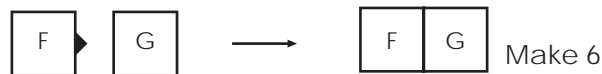
- Sew any remaining strips together end-to-end and trim to make (2) 44" x 2" strips. These will be referred to as the top and bottom borders.

PIECING (NOTE: refer to the Assembly Layout on p.4 for fabric placement)

1. Sew (1) Fabric G square to the left hand side of (1) Fabric F square, as shown, making sure that the direction of the print is oriented correctly. Repeat to make (6) units. These units will be used to create columns 1 & 3.

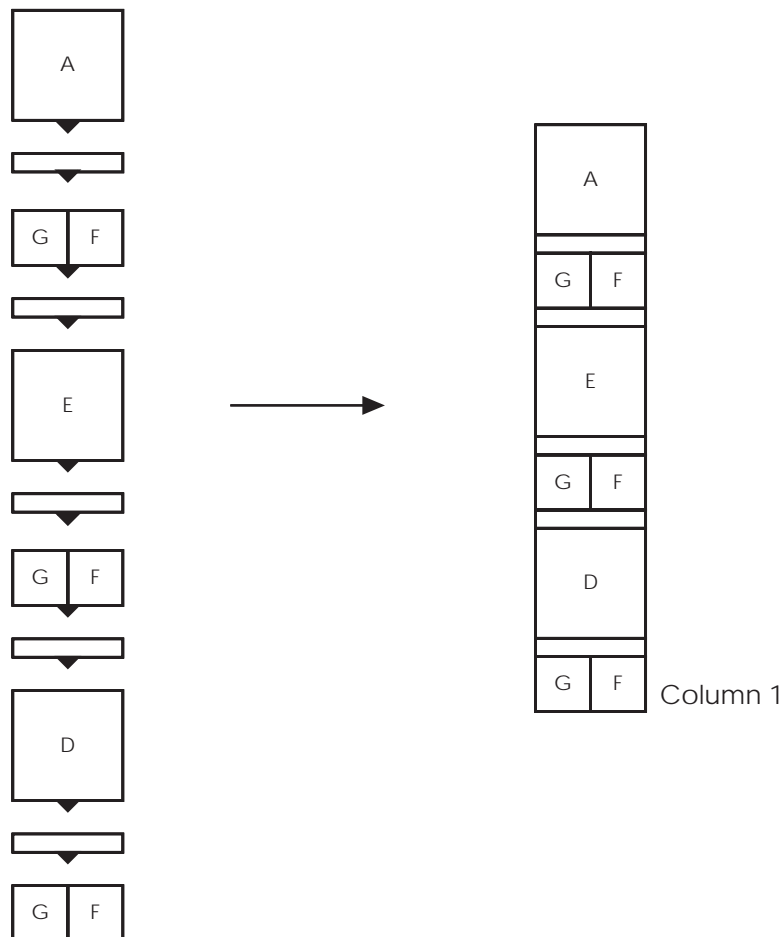


2. Repeat Step 1 to make 6 more units, this time reversing the order of the fabrics. These units will be used to create columns 2 & 4.



Sewing the columns (NOTE: As you piece each column always pay attention to the direction of the print).

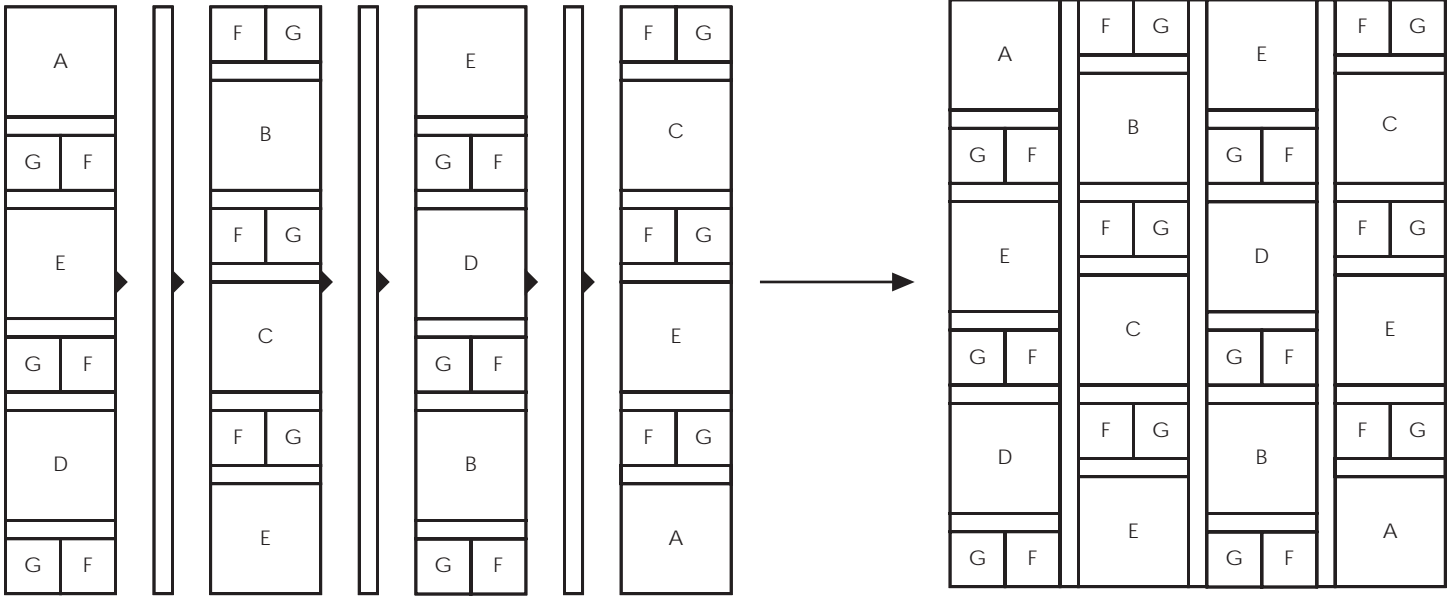
3. Sew the following pieces together from top to bottom as shown (NOTE: use the units created in Step 1, as well as the short sashing strips). This creates Column 1.



4. Refer to the assembly layout on page 4 & to the cover image to sew columns 2, 3 & 4.

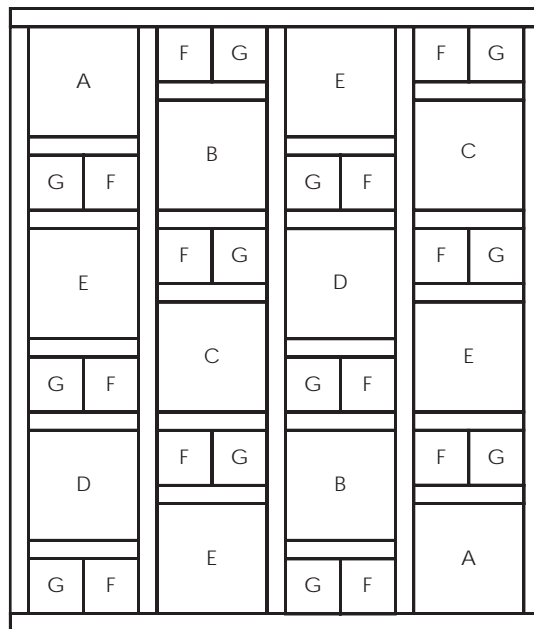
ASSEMBLY

5. Sew all columns together from left to right, while inserting a long sashing strip in between each column, as shown:



6. Sew a long sashing strip to either side of the unit created in Step 5.

7. Sew the top and bottom border pieces to the unit created in Step 6. This completes the quilt top.



FINISHING

8. Layer the quilt top with batting and backing. Baste and quilt as desired.

9. Sew the Fabric H binding strips together end-to-end and press seams open. Bind the quilt using your favorite method.

Assembly Layout

