

**JAHI**



**Build Point Engineering Services Limited**



**Build Point Engineering Services Limited**

## **ABOUT US**

At Build Point Engineering Services Limited we value our clients' needs for safe, reliable, and operationally, functional and efficient designs through cost-effective engineering and construction management services in a responsive, dynamic, and efficient way. Our Principals have built their careers understanding this fact and are committed to doing business built on trust and integrity.

We are also committed and dedicated towards exhibiting high skills in project and service delivery within cost and stipulated time as well as meeting clients' request to have value for money and / or return of investment.

## **MISSION**

Our mission is to provide our Clients with value through the provision of quality houses, engineering services, construction, project management, operation and management of infrastructure on the basis of our core values.

## **VISION**

To be one of the leading Companies in the industry and build trusted relationships with our clients through integrity, honesty, hard work and accountability.

## **VALUES**

### **INNOVATION. TRADITION. TRUST.**

The values of Build Point Engineering Services Limited are the cornerstone of our business relationships. They form the bedrock for our guiding principles and the business culture of the company. They set the benchmark for minimum expectations and are the driving force behind our performance, and professional integrity.

## FACILITIES



24 HOURS ELECTRICITY



SECURITY



PORTABLE WATER



INTRACOM



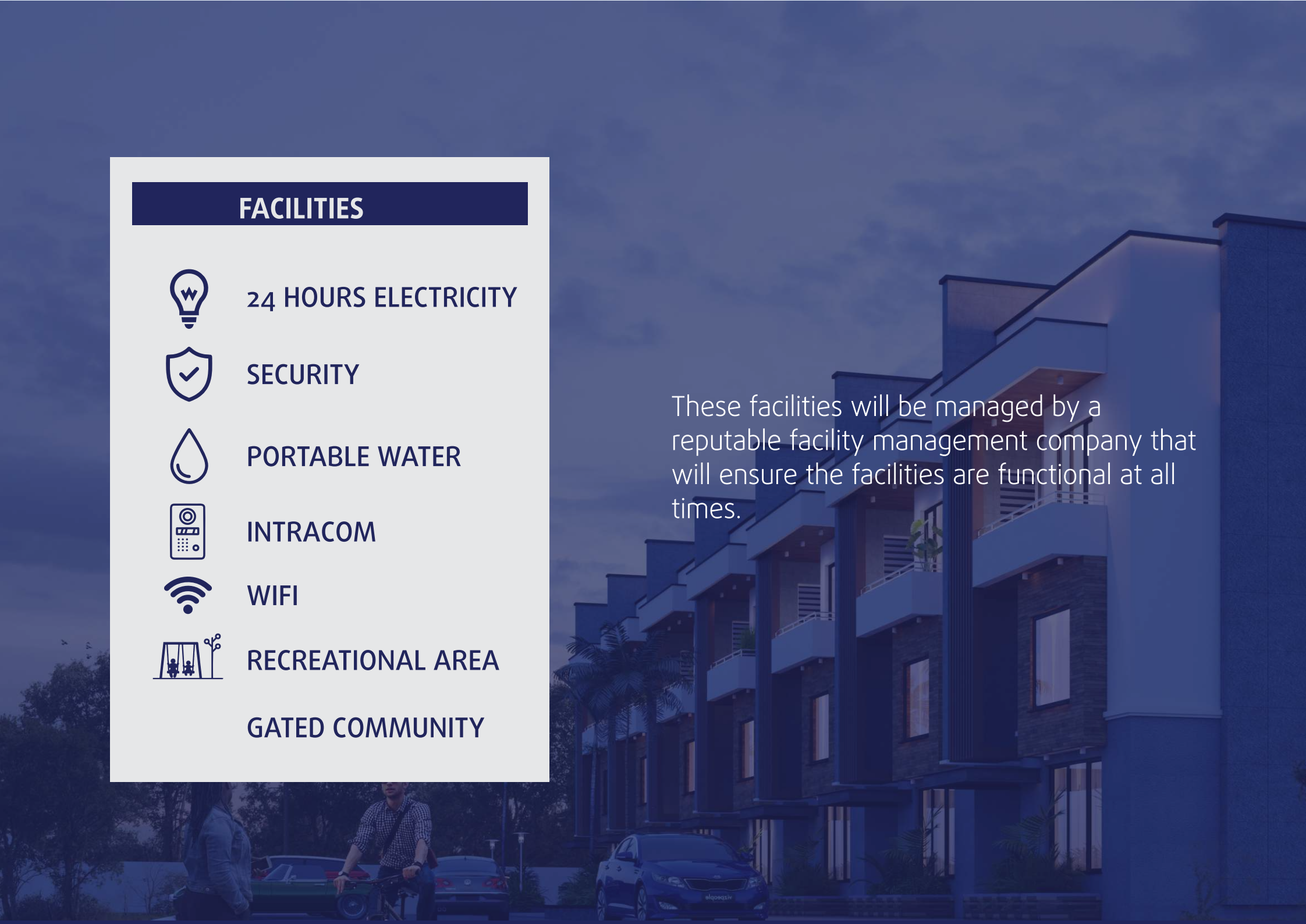
WIFI



RECREATIONAL AREA

GATED COMMUNITY

These facilities will be managed by a reputable facility management company that will ensure the facilities are functional at all times.









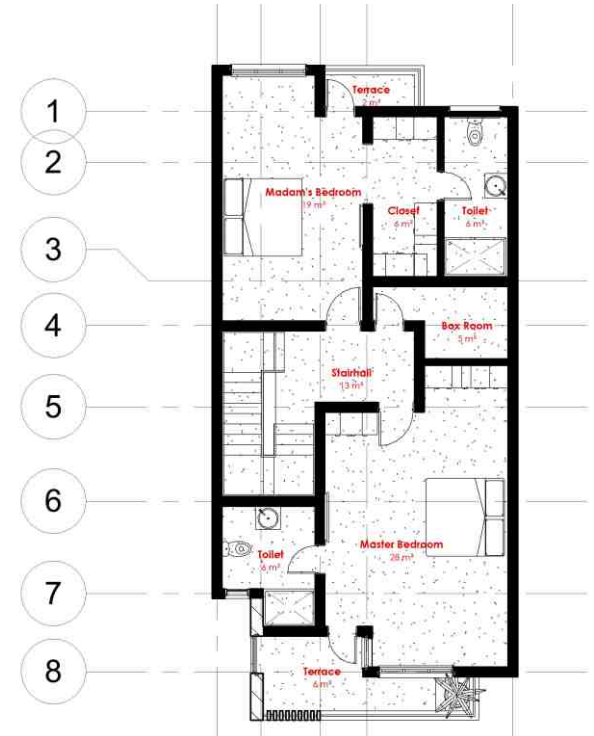
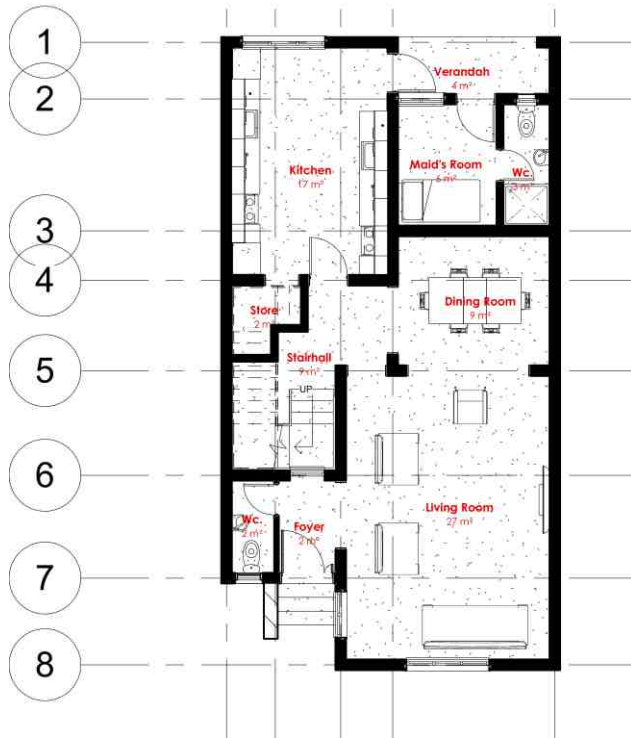


# 4 BEDROOM TERRACES





# 4 BEDROOM TERRACES



**12**  
MONTHS  
PAYMENT PLAN

30% initial deposit  
2nd installment 30%  
3rd installment 20%  
Final payment 20%  
120 days in between payments.

**N80**  
MILLION

All Units are fully finished with exception of wardrobes and kitchen units. These can be added at an extra cost.

A large, solid dark blue circle is centered on a white background. Inside the circle, there is white text arranged in three separate paragraphs, each centered horizontally.

This Property has a  
Certificate of Occupancy (C of O).

Each Client will get a deed of assignment  
upon delivery of the house

Delivery Period: 18 - 24 Months  
after first payment.







-  Suite 206/207, Nigeria Society of Engineers,  
Sani Abacha Way, Central Business Area, Abuja.
-  [info@buildpointengineering.com](mailto:info@buildpointengineering.com)
-  [www.buildpointengineering.com](http://www.buildpointengineering.com)
-  08033427641, 08033101534, 08067046000