

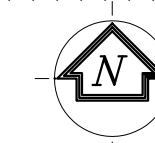
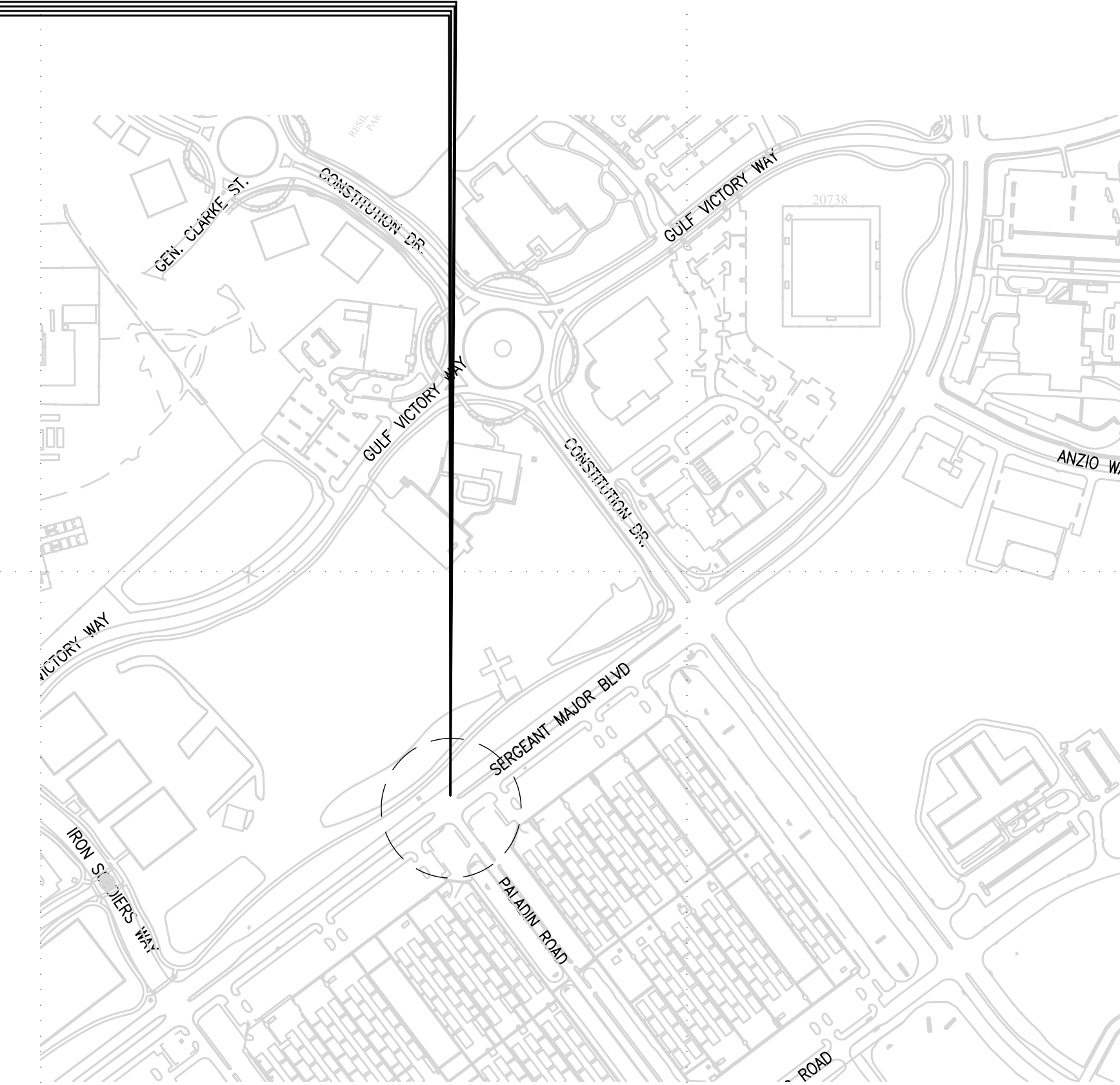
FORT BLISS, TEXAS

ROAD IMPROVEMENTS AT SERGEANT MAJOR BLVD. AND PALADIN ROAD

INDEX OF DRAWINGS

SHEET NO.	DESCRIPTION
1	COVER SHEET
2	UTILITY SITE LOCATION MAP
3	DEMOLITION PLAN
4	NEW PROPOSED WORK PLAN
5	DETAIL SHEET
6	DETAIL SHEET

PROJECT LOCATIONS



PROJECT LOCATION MAP

SCALE: NOT TO SCALE

CONCURRENCES

USING AGENCY	DATE
FIRE DEPARTMENT	DATE
SAFETY OFFICER	DATE
PHYSICAL SECURITY OFFICER	DATE
INDUSTRIAL HYGIENE	DATE
NEC	DATE
ENVIRONMENTAL DIVISION	DATE
ANTI-TERRORISM/FORCE PROTECTION	DATE
MASTER PLANNING DIVISION	DATE
OPERATIONS & MAINTENANCE DIVISION	DATE

NOTES:
SIGNATURES INDICATE THAT THOSE SIGNING HAVE REVIEWED PROJECT PLANS AND SPECIFICATIONS AND ARE IN CONCURRENCE WITH THEM.

APPROVED BY: _____
CHIEF, DESIGN BRANCH, ESD, DPW

APPROVED BY: _____
CHIEF, ENGINEERING SERVICES DIVISION, DPW

MARK	DESCRIPTION	DATE

DESIGNED BY: JJA	DATE: 06/29/2020
DRAWN BY: L.M.	W.O. # FE 10191 9J
REVIEWED BY: JJA	SPEC. #
SCALE: AS SHOWN	

DIRECTORATE OF
PUBLIC WORKS
FORT BLISS, TEXAS

ROAD IMPROVEMENTS AT SERGEANT
MAJOR BLVD. and PALADIN ROAD

COVER SHEET

SHEET NUMBER:
C-100
1 OF 6

1

2

3

4

5

6

D

C

B

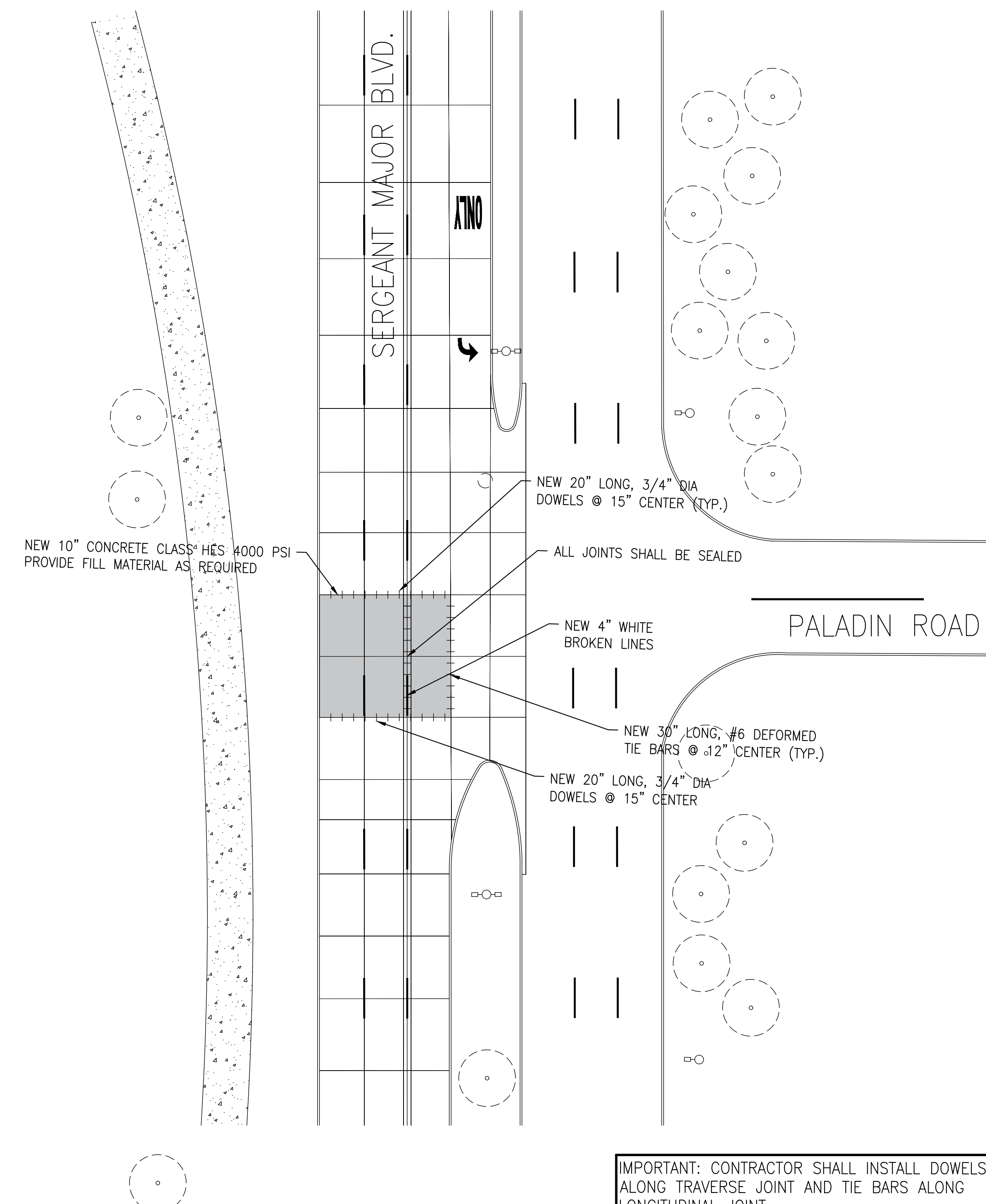
A

D


C

B


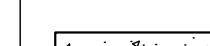
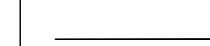

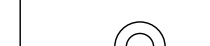


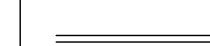
A



IMPORTANT: CONTRACTOR SHALL INSTALL DOWELS
ALONG TRAVERSE JOINT AND TIE BARS ALONG
LONGITUDINAL JOINT.

 NEW WORK PLAN
SCALE: 1 : 20

LEGEND

-  NEW CONCRETE PAVEMENT
-  EXISTING SIDEWALK
-  EXISTING CONTROL JOINTS
-  EXISTING LIGHT POLE
-  EXISTING SANITARY SEWER MANHOLE
-  EXISTING MANHOLE
-  EXISTING A.D.A. RAMP
-  EXISTING CONCRETE CURB

CONCRETE NOTES

1. ALL CONCRETE WORK SHALL BE IN ACCORDANCE WITH ACI-318-02
2. CONCRETE SHALL HAVE A COMPRESSIVE STRENGTH OF F'c=4000 PSI IN 28 DAYS, UNLESS NOTED OTHERWISE.
3. ALL STEEL REINFORCING BARS SHALL CONFORM TO ASTM A-615-4 GRADE 60 STEEL.
4. CONCRETE SLUMP SHALL BE 3.0" +/- 1.0".
5. CONCRETE AIR-ENTRANCE SHALL BE: 2.5% TO 4.5%.
6. PROPOSED CONCRETE SLAB SHALL BE SET FLUSH WITH FINISHED PAVEMENT.
7. CONTRACTION JOINTS SHOULD HAVE A MINIMUM DEPTH OF 1/4 THE THICKNESS OF THE SLAB, BUT NOT LESS THAN 1 INCH. INSTALL EXPANSION JOINTS WITH THICKENED EDGE AND HOT Poured JOINT SEALER WHERE CONCRETE ABUTS WITH OTHER STRUCTURES IN PAVEMENT UNLESS NOTED OTHERWISE.
8. THE CONTRACTOR SHALL SAW CUT EXISTING PAVEMENT, CURBS AND SIDEWALKS AT THE NEW PAVEMENT. CURB AND SIDEWALK JUNCTURES, NO JAGGED OR IRREGULAR CUTS WILL BE ACCEPTED. NEAT SAW CUT LINE REQUIRED ALONG EXISTING PERIMETER JOINTS.
9. A WHITE PIGMENTED MEMBRANE CURING SHALL BE USED FOR THE CONCRETE CURB & GUTTER, AS APPROVED BY THE GOVERNMENT REPRESENTATIVE.
10. WHERE NEW CURB AND GUTTER TIES TO EXISTING CURB OR CURB AND GUTTER, A TRANSITION OF 10' SHALL BE MADE TO CONFORM TO THE EXISTING HEIGHTS, WIDTHS, AND SHAPES.
11. INSTALL EXPANSION JOINTS WITH THICKENED EDGE AND HOT Poured JOINT SEALER WHERE CONCRETE ABUTS WITH OTHER STRUCTURES IN PAVEMENT UNLESS NOTED OTHERWISE.
12. DO NOT UNLOAD OR USE ANY HEAVY CONSTRUCTION EQUIPMENT ON NEW CONCRETE FOR AT LEAST 7 DAYS AFTER CONCRETE IS Poured.
13. ALL EXPOSED CORNERS FOR CONCRETE WORK SHALL BE CHAMFERED 1".

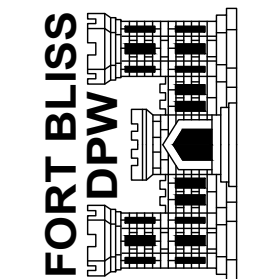
SIGN & STRIPPING NOTES

1. REFER TO MUTCD FIGURE 2A-1 FOR TYPICAL INSTALLATION OF SIGNS. LATERAL LOCATIONS AND TYPICAL HEIGHTS.
2. STRIPING SHALL CONFORM WITH TXDOT ITEM 666 RETROREFLECTORIZED PAVEMENT MARKINGS.
3. STRIPING IS SHOWN "NOT TO SCALE" FOR CLARITY.
4. ALL STRIPING AND PAVEMENT MARKINGS SHALL BE THERMOPLASTIC (REFER TO DMS-8220) TEMPORARY STRIPING AND PAVEMENT MARKINGS ARE TO BE PAINTED.

DATE	DESCRIPTION

DESIGNED BY: JJA	DATE: 06/29/2020	W.O. #	FE 10191 9J
DRAWN BY: L.M.		REVIEWED BY: JJA	SPEC. #
SCALE: AS SHOWN			

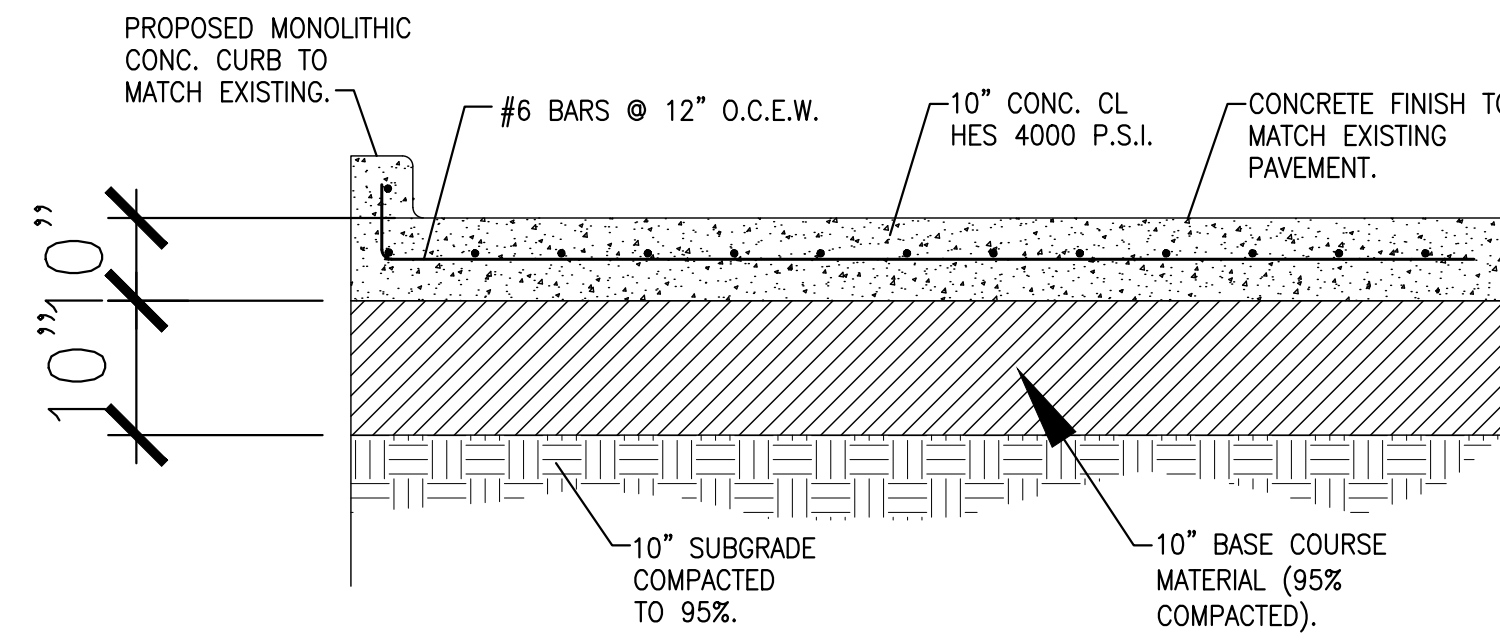
DIRECTORATE OF
PUBLIC WORKS
FORT BLISS, TEXAS



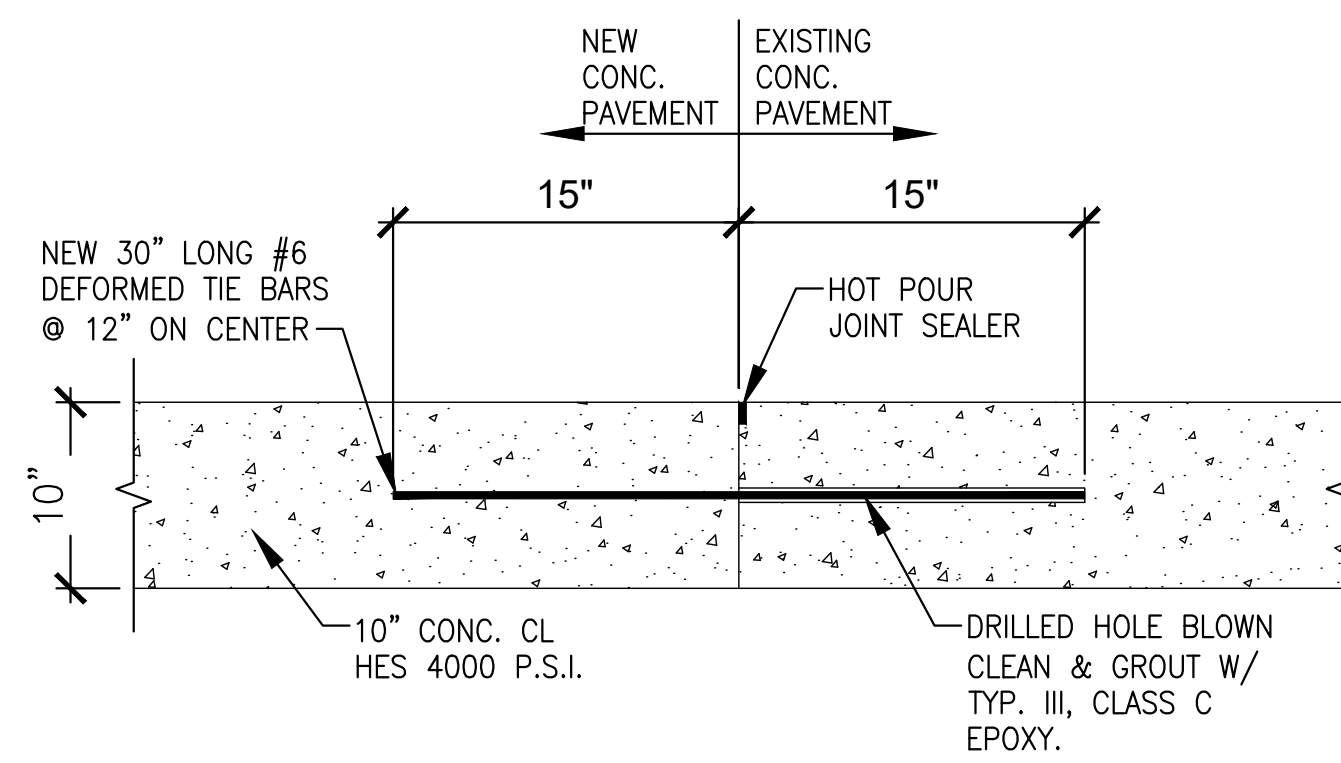
ROAD IMPROVEMENTS AT SERGEANT
MAJOR BLVD. and PALADIN ROAD

NEW WORK PLAN

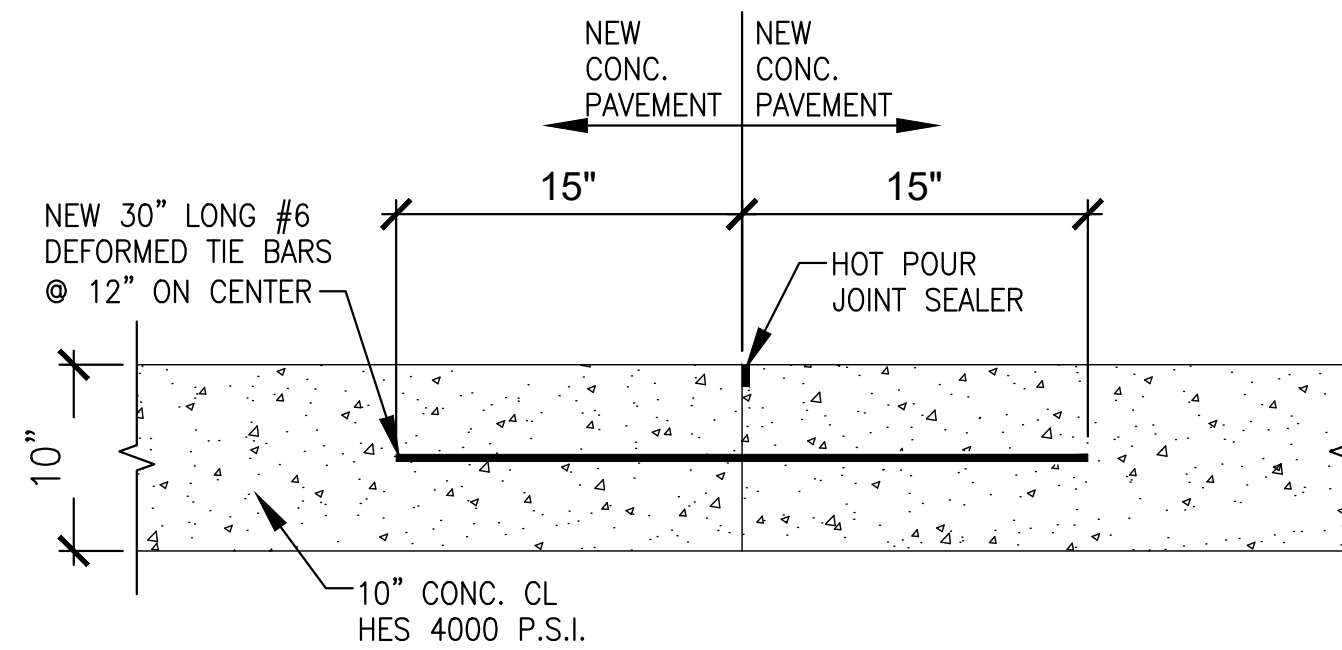
SHEET NUMBER: C-103
4 OF 6



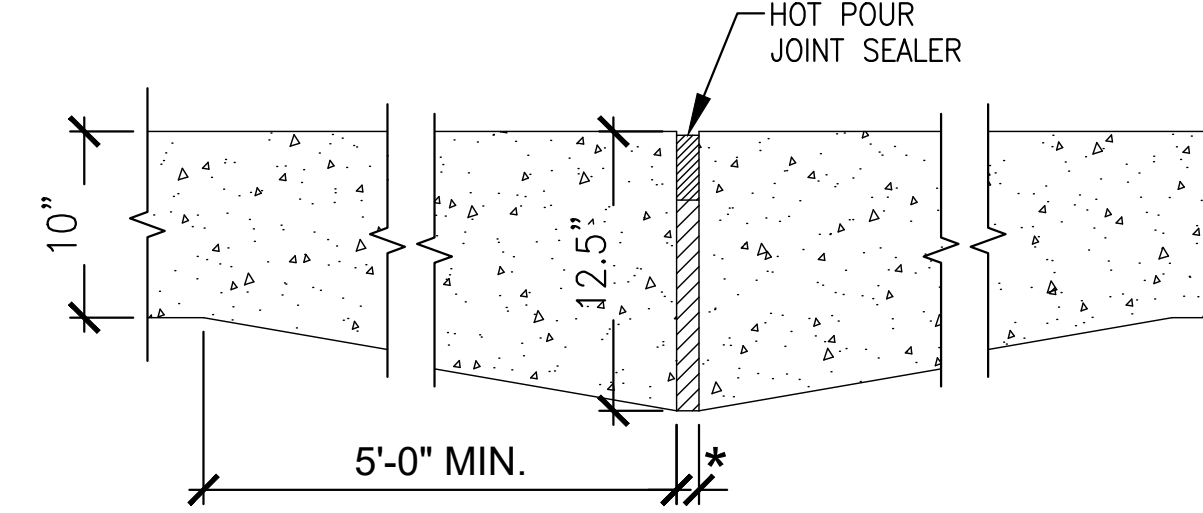
1 NEW CONCRETE SECTION
NOT TO SCALE



2 NEW TIE BARS (NEW TO EXISTING)
NOT TO SCALE

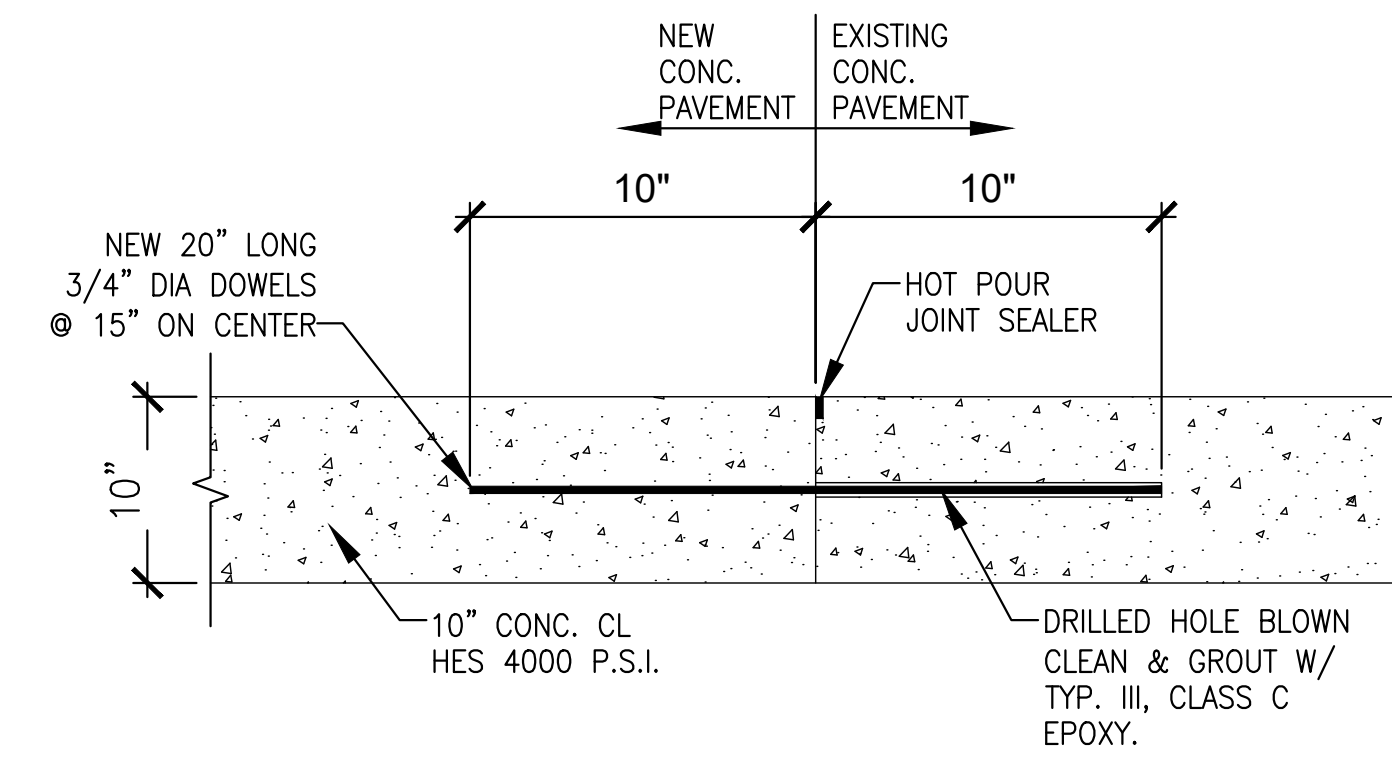


3 NEW TIE BARS (NEW TO NEW)
NOT TO SCALE

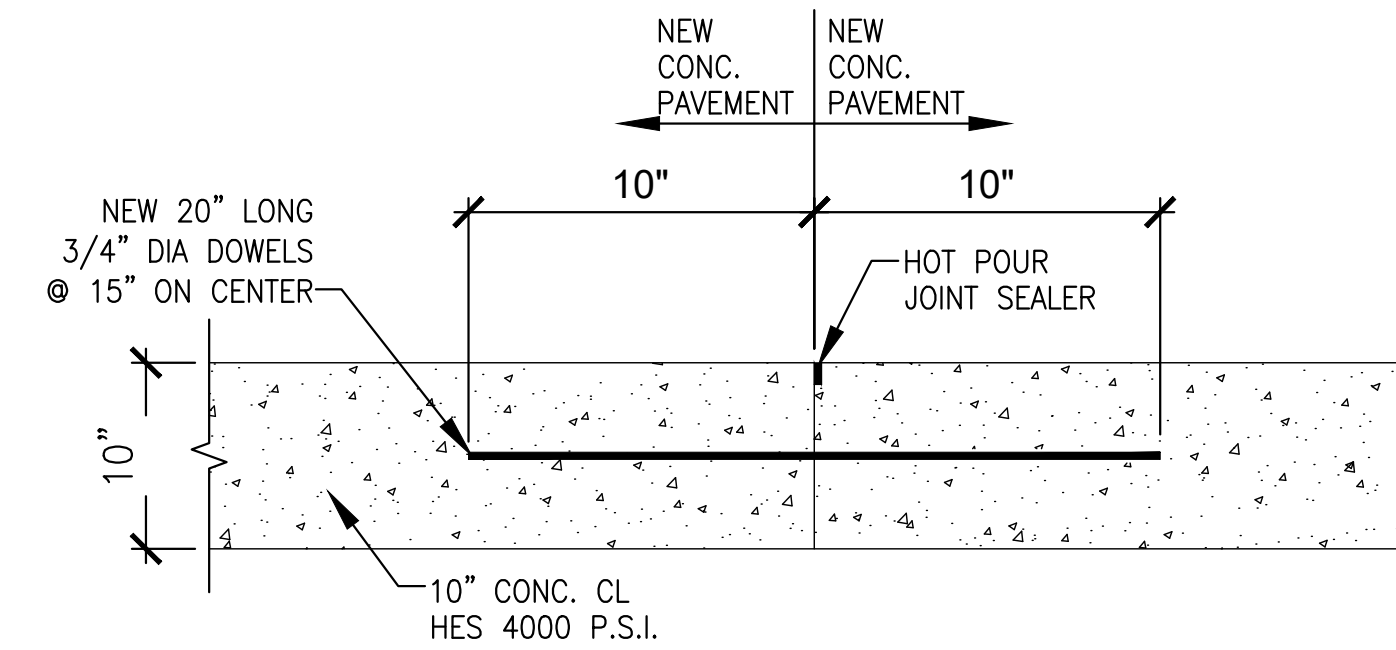


* THE BOND-BREAKING MEDIUM WILL BE EITHER A HEAVY COATING OF BITUMINOUS MATERIAL NOT LESS THAN 1/16 INCH IN THICKNESS WHEN JOINTS MATCH OR A NORMAL NONEXTRUDING-TYPE EXPANSION JOINT MATERIAL NOT LESS THAN 1/4-INCH IN THICKNESS WHEN JOINTS DO NOT MATCH.

4 THICKENED EDGE SLIP JOINT
NOT TO SCALE



5 NEW DOWELS (NEW TO EXISTING)
NOT TO SCALE



6 NEW DOWELS (NEW TO NEW)
NOT TO SCALE

MARK	DESCRIPTION	DATE

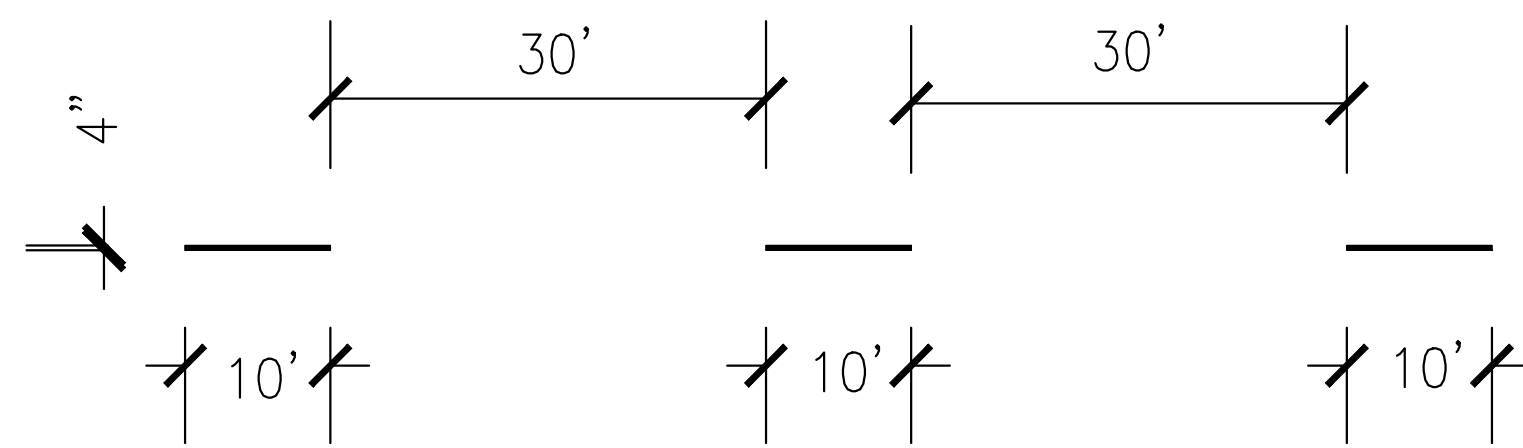
DESIGNED BY: JJA	DATE: 06/29/2020
DRAWN BY: L.M.	W.O. # FE 10191 9J
REVIEWED BY: JJA	SPEC. #
SCALE: AS SHOWN	

DIRECTORATE OF PUBLIC WORKS
FORT BLISS, TEXAS

ROAD IMPROVEMENTS AT SERGEANT MAJOR BLVD. and PALADIN ROAD

DETAIL SHEET

SHEET NUMBER:	C-104
	5 OF 6

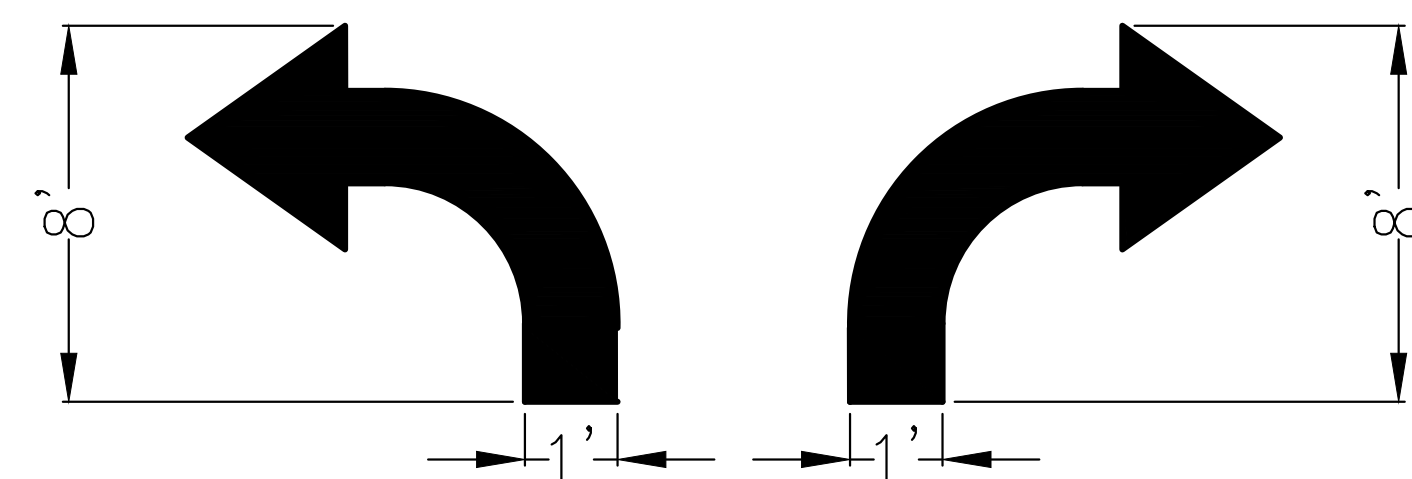


1 NEW 4" WHITE BROKEN LINE
N.T.S.

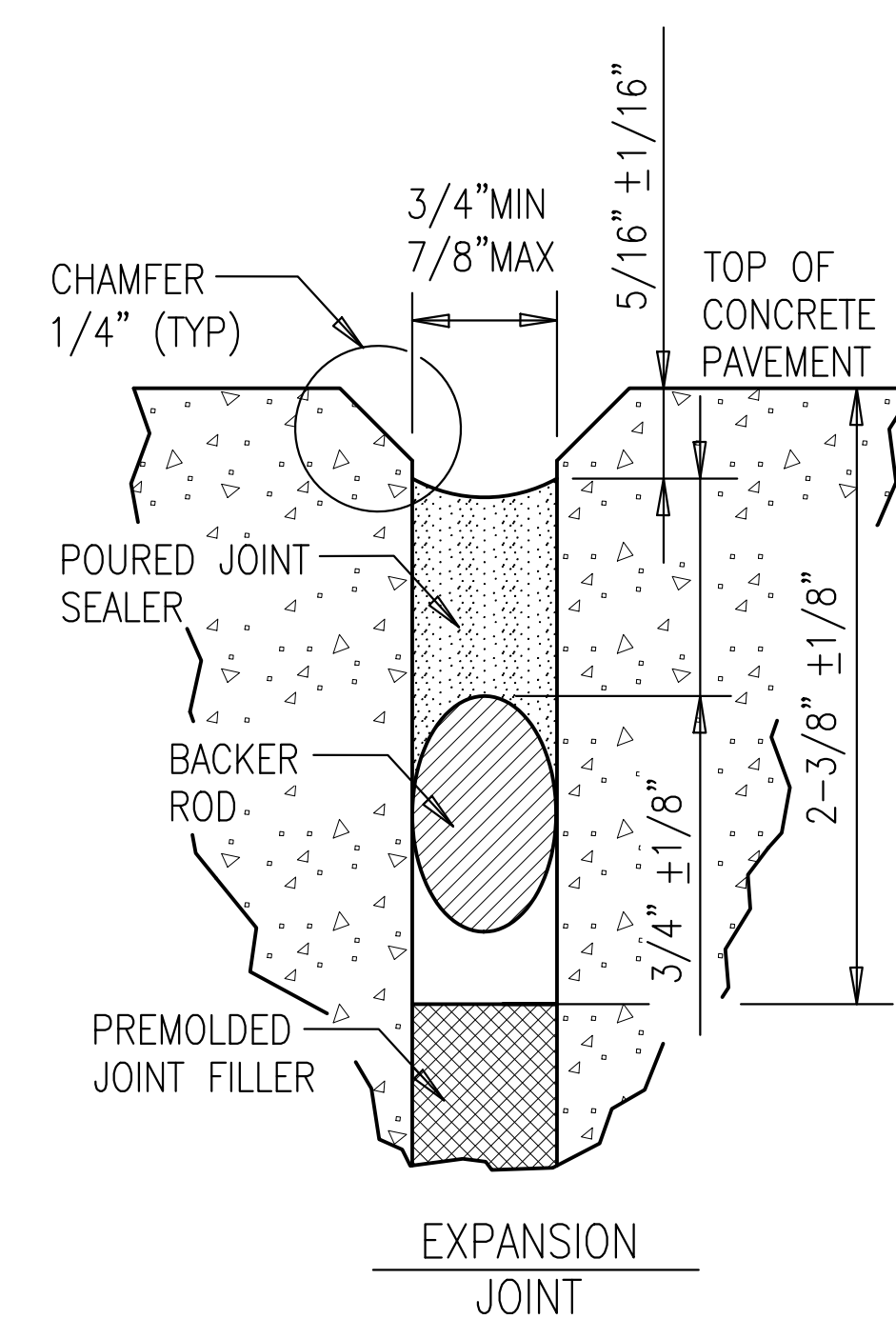
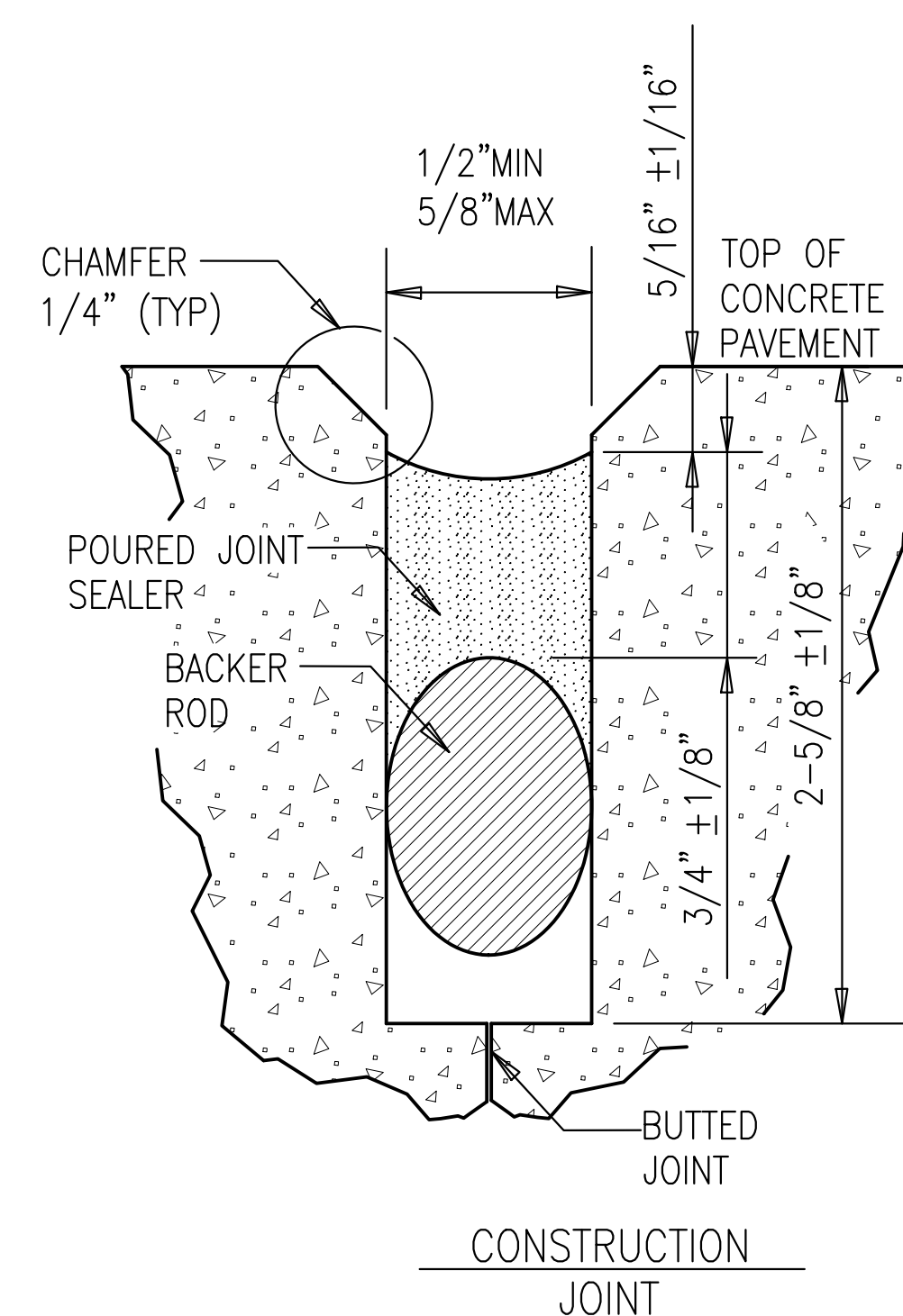
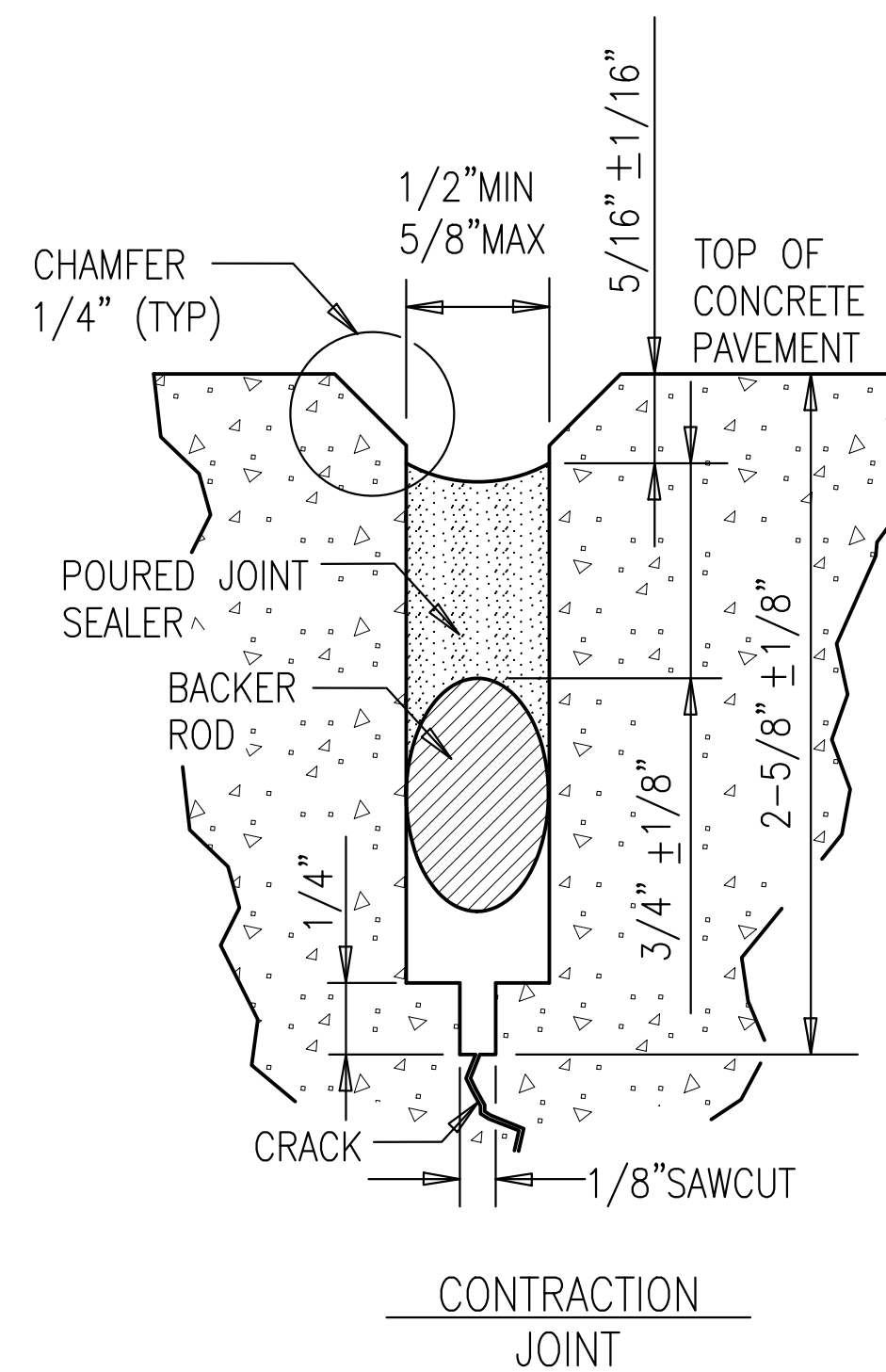


2 NEW 4" DOUBLE YELLOW LINE
N.T.S.

3 _____
N.T.S.



5 NEW WHITE ARROW MARKING
N.T.S.



4 JOINT SEALANT DETAILS
(TANK TRAILS AND STREET CROSSINGS) N.T.S.

MARK	DESCRIPTION	DATE

DESIGNED BY: JJA	DATE: 06/29/2020
DRAWN BY: L.M.	W.O. # FE 10191 9J
REVIEWED BY: JJA	SPEC. #
SCALE: AS SHOWN	

DIRECTORATE OF
PUBLIC WORKS
FORT BLISS, TEXAS

ROAD IMPROVEMENTS AT SERGEANT
MAJOR BLVD. and PALADIN ROAD
DETAIL SHEET

SHEET NUMBER: C-105
6 OF 6