

FORT BLISS, TEXAS

BLDG. 20709

INDEX OF DRAWINGS

SHEET DESCRIPTION
NO.

- 1 = COVER SHEET
- 2 = EXISTING UTILITIES
- 3 = DEMOLITION PLAN
- 4 = PROPOSED CONSTRUCTION PLAN
- 5 = TRAFFIC SIGNS AND STRIPING DETAILS
- 6 = SIDEWALK DETAILS
- 7 = SIDEWALK DETAILS
- 8 = ADA CONCRETE RAMP DETAILS
- 9 = EXISTING ELEVATIONS

CONCURRENCES

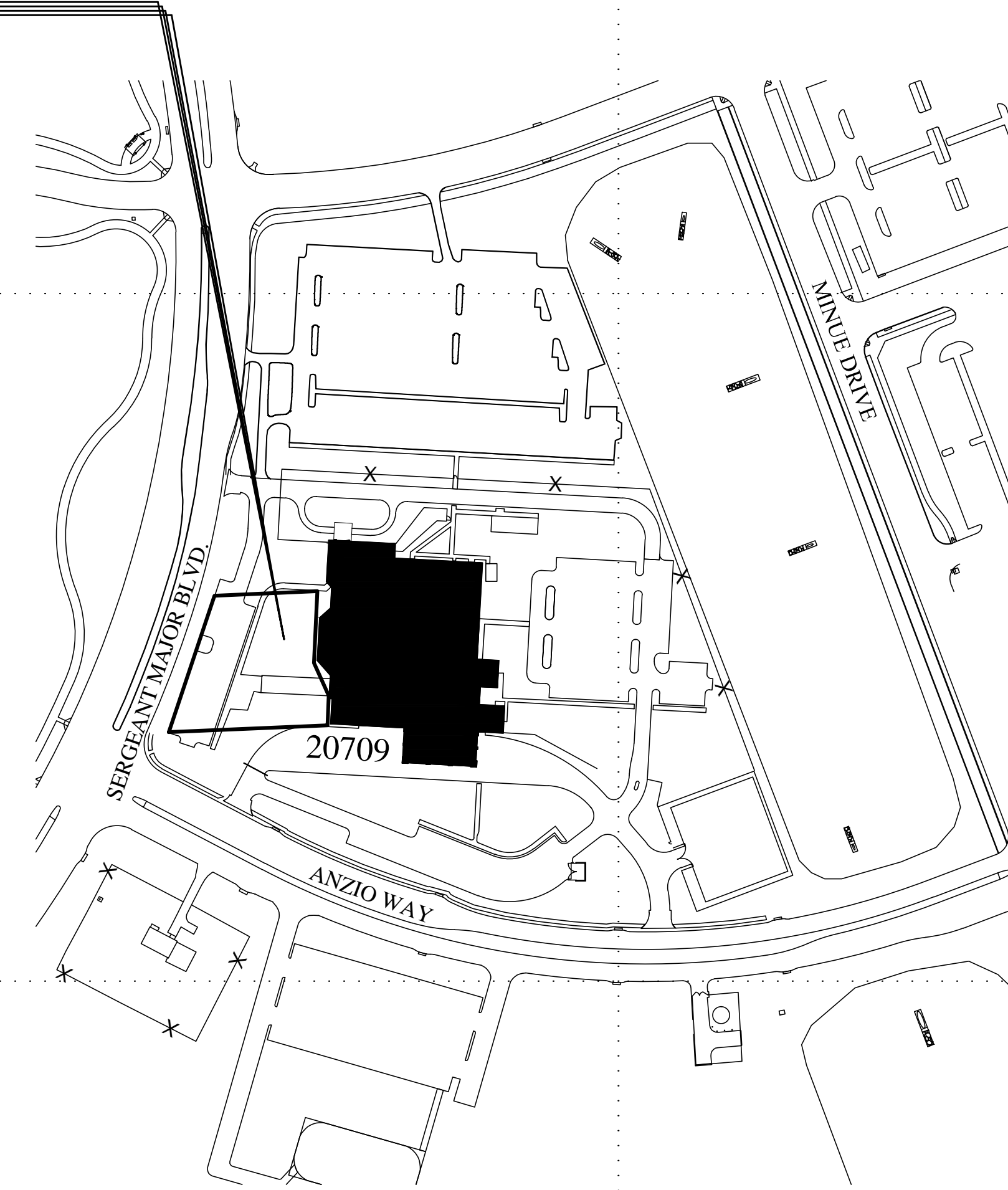
<u>USING AGENCY</u>	<u>DATE</u>
<u>FIRE DEPARTMENT</u>	<u>DATE</u>
<u>SAFETY OFFICER</u>	<u>DATE</u>
<u>PHYSICAL SECURITY OFFICER</u>	<u>DATE</u>
<u>INDUSTRIAL HYGIENE</u>	<u>DATE</u>
<u>NEC</u>	<u>DATE</u>
<u>ENVIRONMENTAL DIVISION</u>	<u>DATE</u>
<u>ANTI-TERRORISM/FORCE PROTECTION</u>	<u>DATE</u>
<u>MASTER PLANNING DIVISION</u>	<u>DATE</u>
<u>OPERATIONS & MAINTENANCE DIVISION</u>	<u>DATE</u>

NOTES:
SIGNATURES INDICATE THAT THOSE SIGNING HAVE REVIEWED PROJECT PLANS AND SPECIFICATIONS AND ARE IN CONCURRENCE WITH THEM.

APPROVED BY: _____
CHIEF, DESIGN BRANCH, ESD, DPW

APPROVED BY: _____
CHIEF, ENGINEERING SERVICES DIVISION, DPW

PROJECT LOCATION



PROJECT LOCATION MAP

MARK	DESCRIPTION	DATE

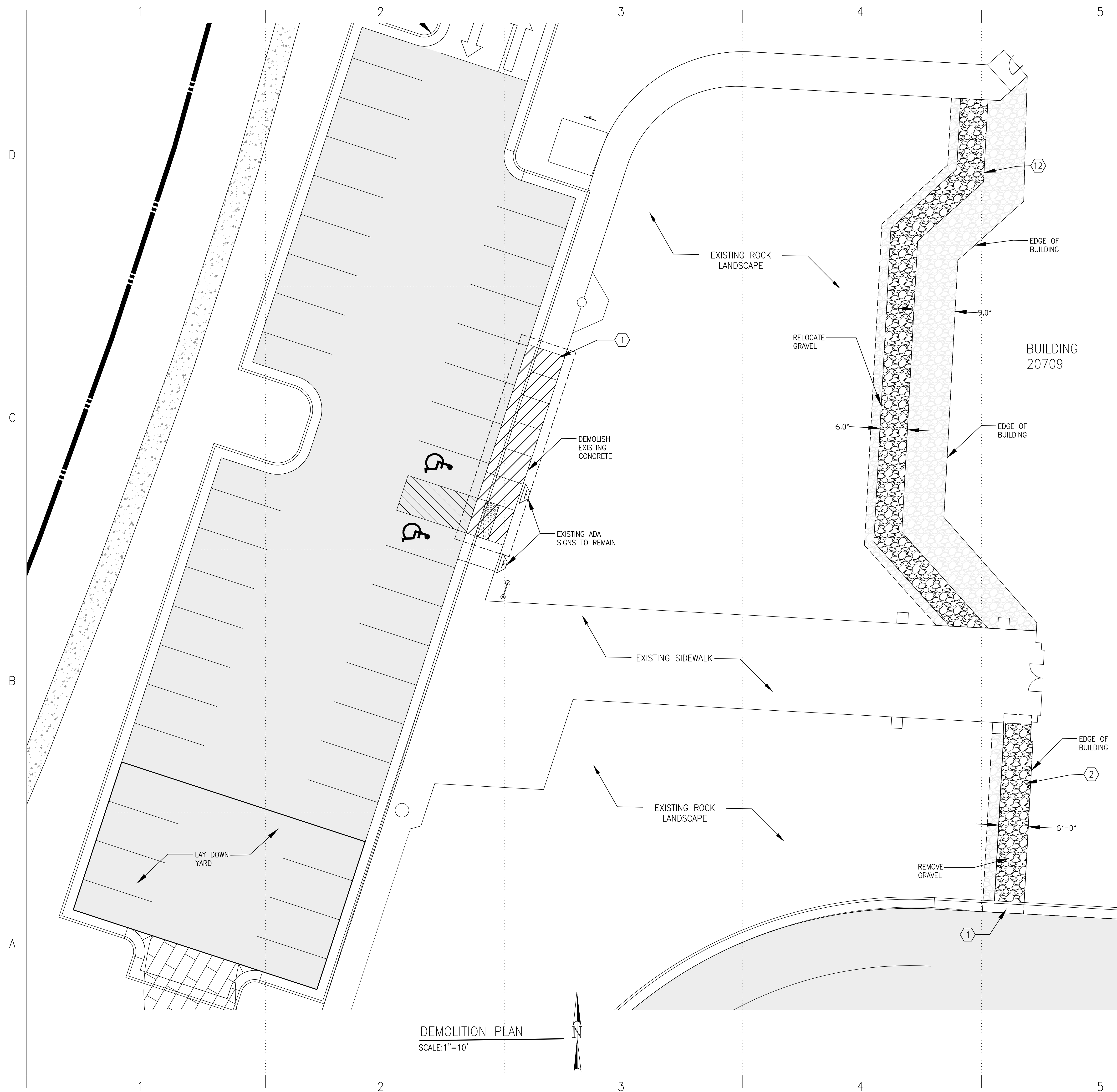
DESIGNED BY: I.A.T.	DATE: 4/10/2018
DRAWN BY: L.M.	W.O. # FF 00087 3J
REVIEWED BY: I.A.T.	SPEC. #
SCALE:	

FORT BLISS DPW

DIRECTORATE OF PUBLIC WORKS
FORT BLISS, TEXAS

20709 COMPLIANT ADA PARKING SPACES AND SIDEWALK COVER SHEET

SHEET NUMBER:
C-100
1 OF 8



DEMOLITION PLAN
SCALE: 1"=10'

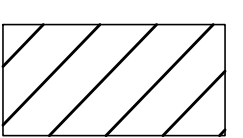
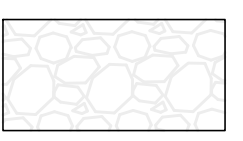

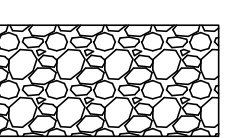

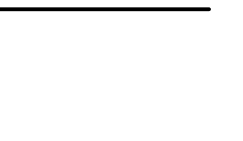

GENERAL NOTES

1. THE CONTRACTOR IS RESPONSIBLE TO PROTECT ALL EXISTING EQUIPMENT MATERIAL AND FINISHES TO REMAIN AND WITHOUT UNNECESSARY DAMAGE. ANY DAMAGE TO SAME SHALL BE REPLACED OR RESTORED WITHOUT ADDITIONAL COST TO THE GOVERNMENT.
2. ITEMS TO BE REMOVED OR DEMOLISHED ARE GENERALLY NOTED TO INDICATE EXISTING CONSTRUCTION ONLY AND NOT INTENDED TO LIMIT THE EXTENT OF DEMOLITION. IT IS THE CONTRACTORS RESPONSIBILITY TO VERIFY EXTENT OF DEMOLITION WITH NEW CONSTRUCTION REQUIREMENTS
3. THE GOVERNMENT RESERVES THE FIRST RIGHT OF REFUSAL FOR ALL DEMOLITION ITEMS. GOVERNMENT DOES NOT WISH TO KEEP. THIS UNWANTED ITEM SHALL BECOME PROPERTY OF THE CONTRACTOR FOR PROPER DISPOSAL.
4. THE CONTRACTOR SHALL OBTAIN A PROPER EXCAVATION REQUEST, PRIOR TO COMMENCING WORK AND THE CONTRACTOR SHALL BE SOLELY RESPONSIBLE FOR ALL DIGGING OPERATIONS.
5. IT SHALL BE THE RESPONSIBILITY OF THE CONTRACTOR, WHETHER INDICATED ON THE DRAWING OR NOT, TO VERIFY THE LOCATION, DEPTH, AND CONDITION OF ALL EXISTING UTILITIES AND SUBSTRUCTURES AND PROTECT THEM FROM ANY DAMAGE.
6. THE CONTRACTOR SHALL CONTACT ALL THE UTILITY COMPANIES AND CONDUCT ALL NECESSARY FIELD INVESTIGATIONS PRIOR TO ANY EXCAVATION. ANY DAMAGE TO EXISTING UTILITIES SHALL BE PROMPTLY REPAIRED BY THE CONTRACTOR AT NO EXPENSE.
7. CONTRACTOR SHALL NOTIFY THE CONTRACTING OFFICER'S FIELD REPRESENTATIVE IMMEDIATELY OF ANY CONFLICTS DISCOVERED IN THE FIELD TO ALLOW SUFFICIENT TIME TO REVIEW AND FINAL DETERMINATION.
8. REMOVAL OF EXISTING SIGNS SHALL INCLUDE FOUNDATION AND PROPER BACKFILLING TO PROPOSED GRADES.
9. CONSTRUCTION AND DEMOLITION DIVERSION: FORT BLISS REQUIRES A 9 MIN. OF 60% OF CONSTRUCTION. DEMOLITION MATERIALS AND DEBRIS FROM LANDFILLS. IF THE CONTRACTOR HAS A VALID REASON FOR NOT BEING ABLE TO MEET THIS DIVERSION GOAL. THE CONTRACTOR NEEDS TO PRESENT THEIR REASONING IN WRITING TO DPW - ENVIRONMENTAL DIVISION.
10. CONTRACTOR SHALL FURNISH VEHICULAR AND PEDESTRIAN TRAFFIC CONTROL..
11. REMOVE LANDSCAPE ROCK AND SPREAD OVER EXISTING LANDSCAPE ROCK.

KEY NOTES

1. ALL SAW CUT WORK SHALL BE PERFORMED IN NEAT, WORKMAN LIKE MANNER, AS APPROVED BY DPW COR.
2. EXCAVATE, LOAD AND HAUL DIRT TO INSTALL SIDEWALK.

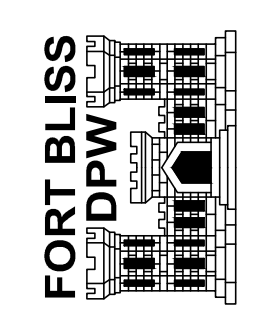
LEGEND

	DEMOLISH EXISTING CONCRETE
	EXISTING GRAVEL TO BE RAKED AND PRESERVED ON SITE
	CONCRETE TO REMAIN
	LANDSCAPE ROCK TO BE REMOVED
	EXISTING ASPHALT TO REMAIN
	LAY DOWN YARD
	DEMOLITION LIMITS

DATE	
MARK	
DESCRIPTION	

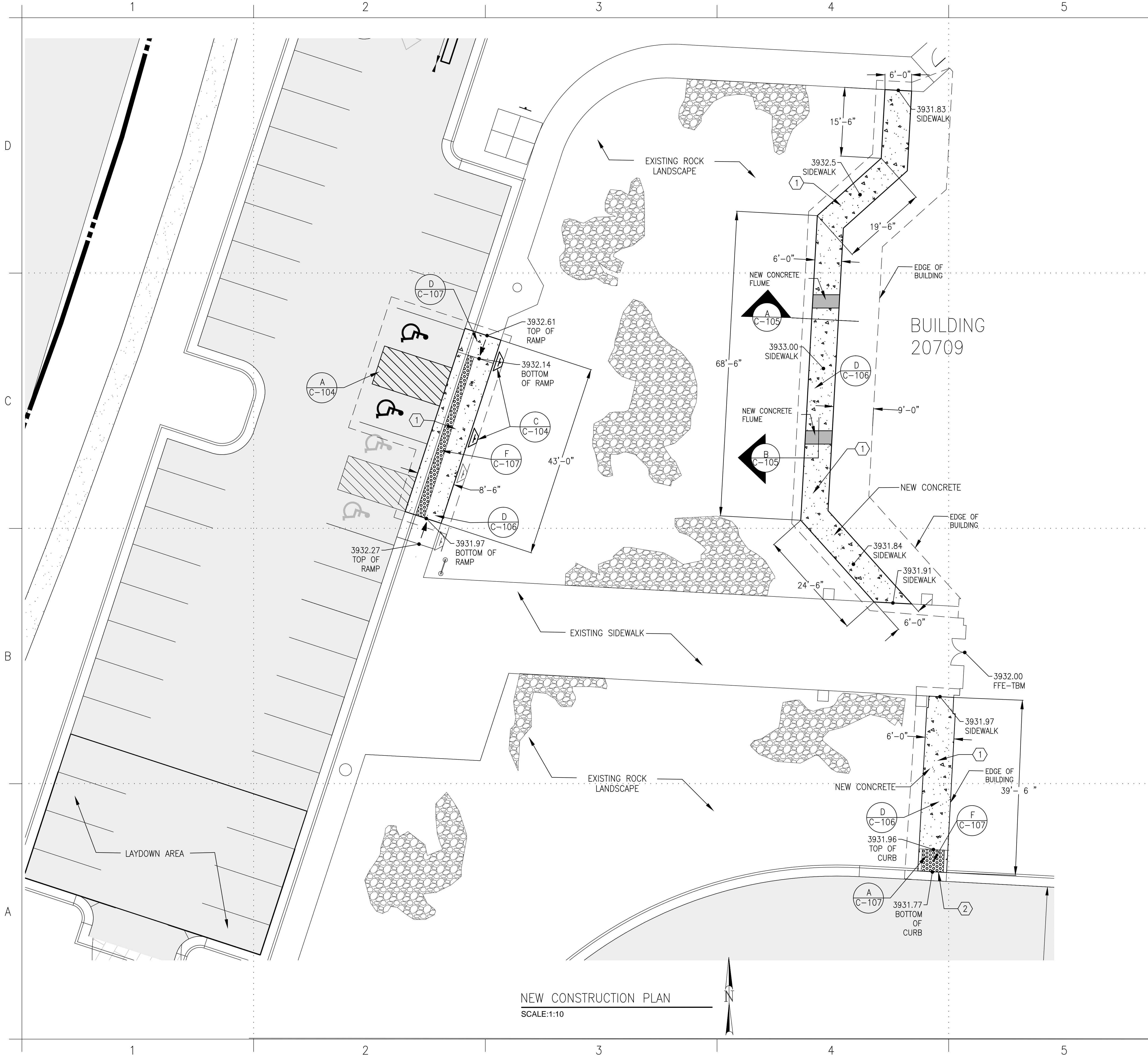
DESIGNED BY: I.A.T.	DATE: 4/10/2018
DRAWN BY: L.M.	W.O. # FF 00087 3J
REVIEWED BY: I.A.T.	SPEC. #
SCALE: 1"=10'	

DIRECTORATE OF
PUBLIC WORKS
FORT BLISS, TEXAS



20709 COMPLIANT ADA PARKING
SPACES AND SIDEWALK
DEMOLITION PLAN

SHEET NUMBER: C-102
3 OF 8



GENERAL NOTES

1. CONTRACTOR SHALL FIELD VERIFY SITE CONDITIONS, DIMENSIONS AND SCOPE OF WORK. DEVIATIONS SHALL BE DOCUMENTED AND REPORTED TO GOVERNMENT CONTRACTING REP. IN WRITING.
2. WORK SHALL BE COMPLETED ACCORDING TO SPECIFICATIONS.
3. CONTRACTOR SHALL PROTECT EXISTING FEATURES OF WORK VEGETATION AND NEW WORK.
4. NEW WORK TO MATCH ELEVATION OF ADJACENT PATH OF CIRCULATION.
5. CLEAN AND RAKE GRAVEL BACK INTO PLACE, ADJACENT TO PATH.
6. CONTRACTOR TO SUBMIT CONTRACTION JOINT LAYOUT.
7. IT SHALL BE THE RESPONSIBILITY OF THE CONTRACTOR WHETHER INDICATED ON THE DRAWINGS OR NOT TO VERIFY THE LOCATION DEPTH AND CONDITION OF ALL EXISTING UTILITIES AND SUBSTRUCTURES AND PROTECT THEM FROM ANY DAMAGE.
8. CONSTRUCTION PROJECTS WHICH REQUIRE ANY TYPE OF DISTURBANCE OF THE SOIL MUST OBTAIN AN EXCAVATION REQUEST.
9. CONTRACTOR SHALL VERIFY ALL DIMENSIONS BEFORE COMMENCING WORK.
10. PRIOR TO ANY CHANGE OR MODIFICATION TO THESE DRAWINGS DUE TO ACTUAL CONDITIONS, THE ENGINEER SHALL BE NOTIFIED FOR REVIEW AND APPROVAL.
11. RELOCATED AND DISTURBED SOIL SHALL BE COMPACTED TO 95% COMPACTION. LAYERS SHALL NOT BE MORE THAN 6 INCHES IN DEPTH. MAINTAIN WATER CONTENT DURING THE COMPACTION PROCEDURE TO WITHIN PLUS OR MINUS 2% OF OPTIMUM WATER CONTENT.
12. ALL CONCRETE WORK SHALL BE IN ACCORDANCE WITH ACI-318-02.
13. CONCRETE SHALL HAVE COMPRESSIVE STRENGTH OF F'C=3500 PSI IN 28 DAYS, UNLESS NOTED OTHERWISE.
14. A WHITE PIGMENTED MEMBRANE CURING SHALL BE USED FOR THE CONCRETE CURB AND GUTTER, AS APPROVED BY THE GOVERNMENT REPRESENTATIVE.
15. ALL CONCRETE AREA SHALL HAVE AN EXPANSION JOINT OF 1/2" PRE-MOLDED ASPHALT BOARD EVERY 20'. IN ADDITION, ALL SIDEWALK'S AND CURB'S SHALL BE GROOVED 1/2" DEEP TO FORM A PLANE OF WEAKNESS (CONTRACTION JOINT) EVERY 5' FOR SIDEWALK AND EVERY 10' FOR CURB.
16. A CHANGE IN LEVEL OF 1/2 INCH IS PERMITTED TO BE 1/4 INCH VERTICAL PLUS 1/4 INCH BEVELED. HOWEVER, IN NO CASE MAY THE COMBINED CHANGE IN LEVEL EXCEED 1/2 INCH. CHANGES IN LEVEL EXCEEDING 1/2 INCH MUST COMPLY WITH 405 (RAMPS) OR 406 (CURB RAMPS) OF THE AMERICANS WITH DISABILITIES ACT (ADA).

KEY NOTES

1. ALL NEW SIDEWALK TO BE SLOPED AWAY FROM BUILDING. THE CROSS SLOPE OF WALKING SURFACES SHALL BE 2.0%. RUNNING SLOPE SHALL NOT EXCEED 5.0%.
2. COUNTER SLOPES OF ADJOINING GUTTERS AND ROAD SURFACES IMMEDIATELY ADJACENT TO THE CURB RAMP SHALL NOT BE STEEPER THAN 5%. THE ADJACENT SURFACES AT TRANSITIONS AT CURB RAMPS TO WALK, GUTTERS, AND STREETS.
3. ALL NEW RAMP RUNS SHALL HAVE A RUNNING SLOPE NOT STEEPER THAN 8.3%.

LEGEND

- TRUNCATED DOMES
- NEW CONCRETE
- GRAVEL TO REMAIN
- EXISTING ASPHALT TO REMAIN
- LAY DOWN YARD
- CONSTRUCTION LIMITS
- NEW ADA SIGN

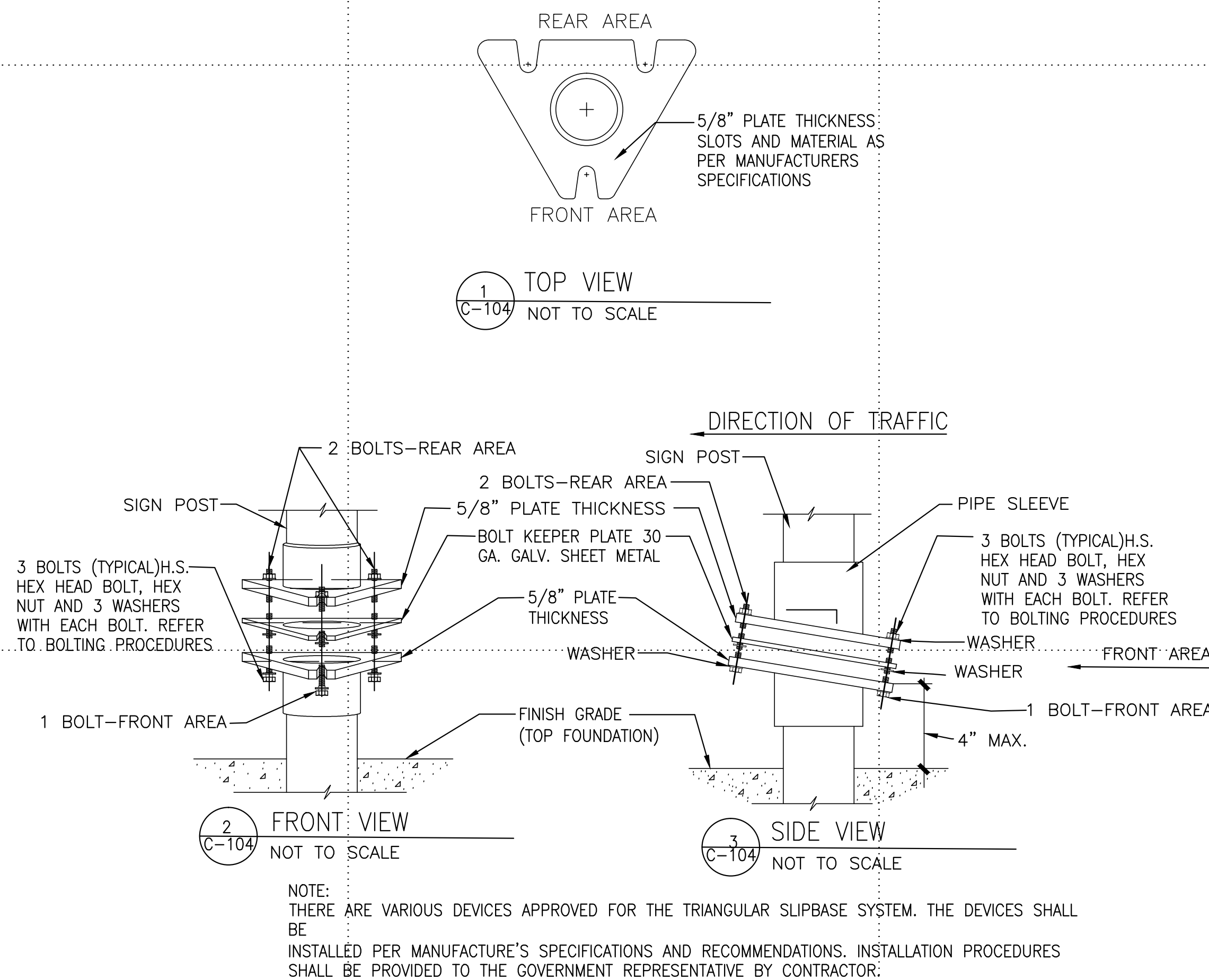
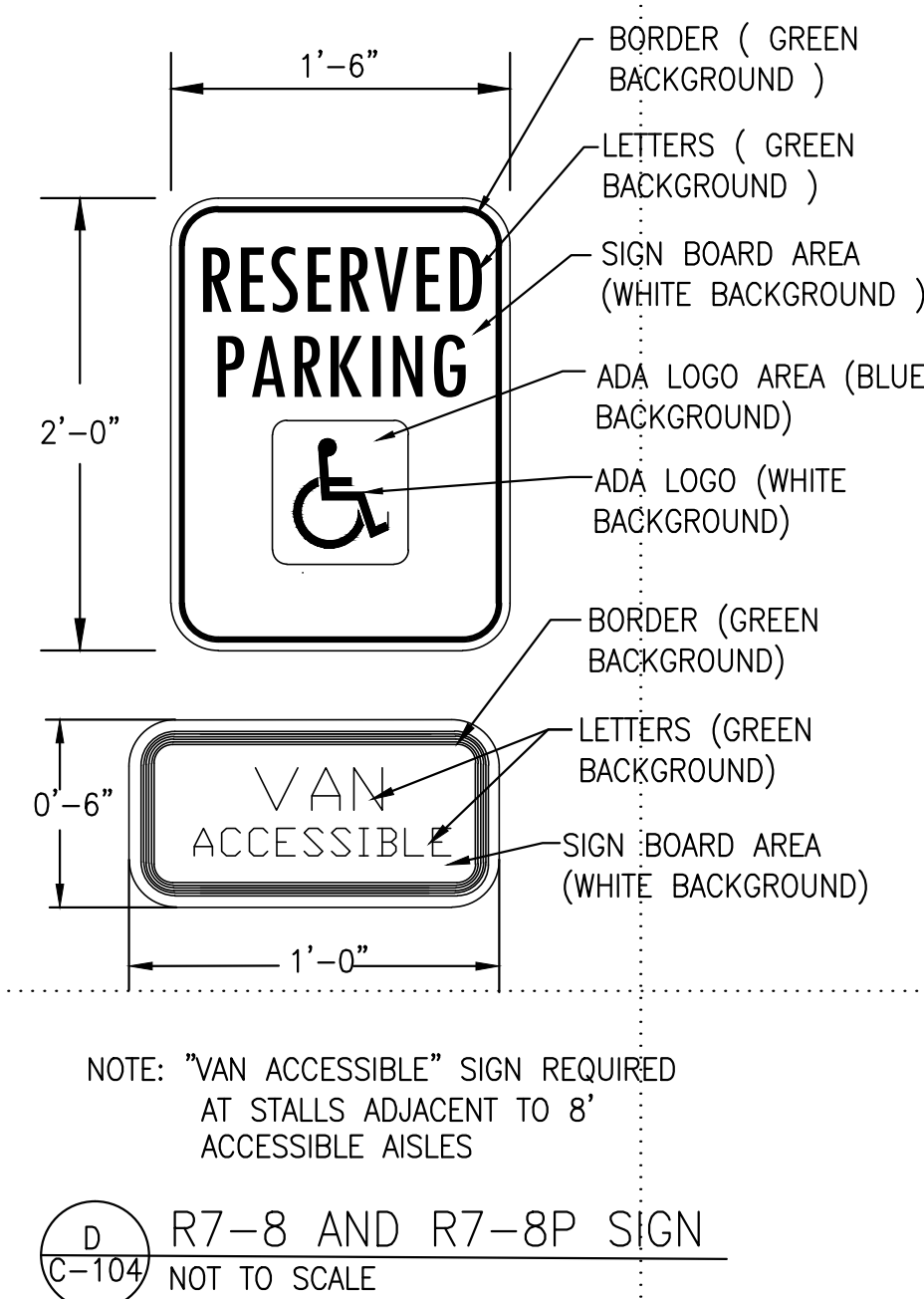
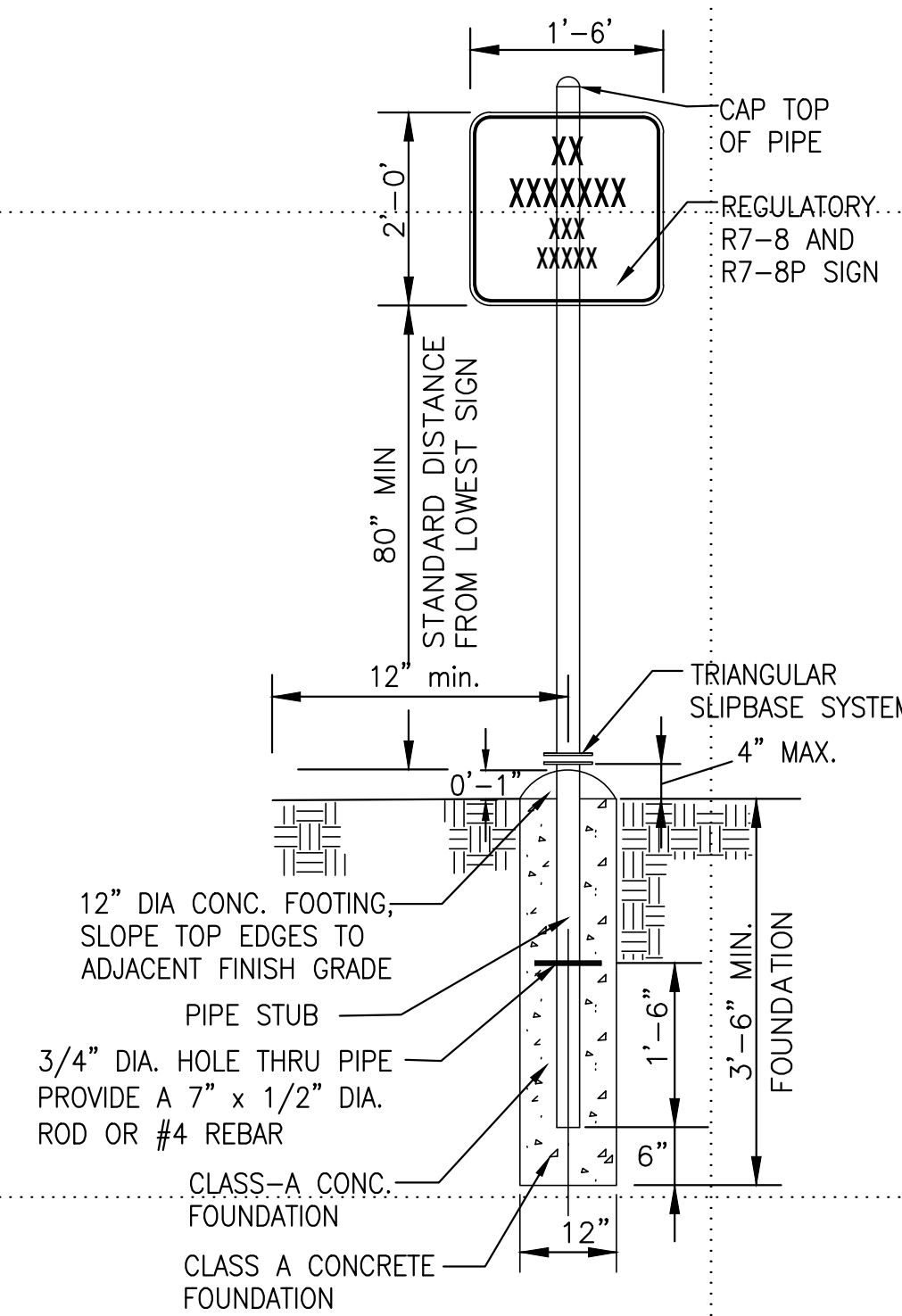
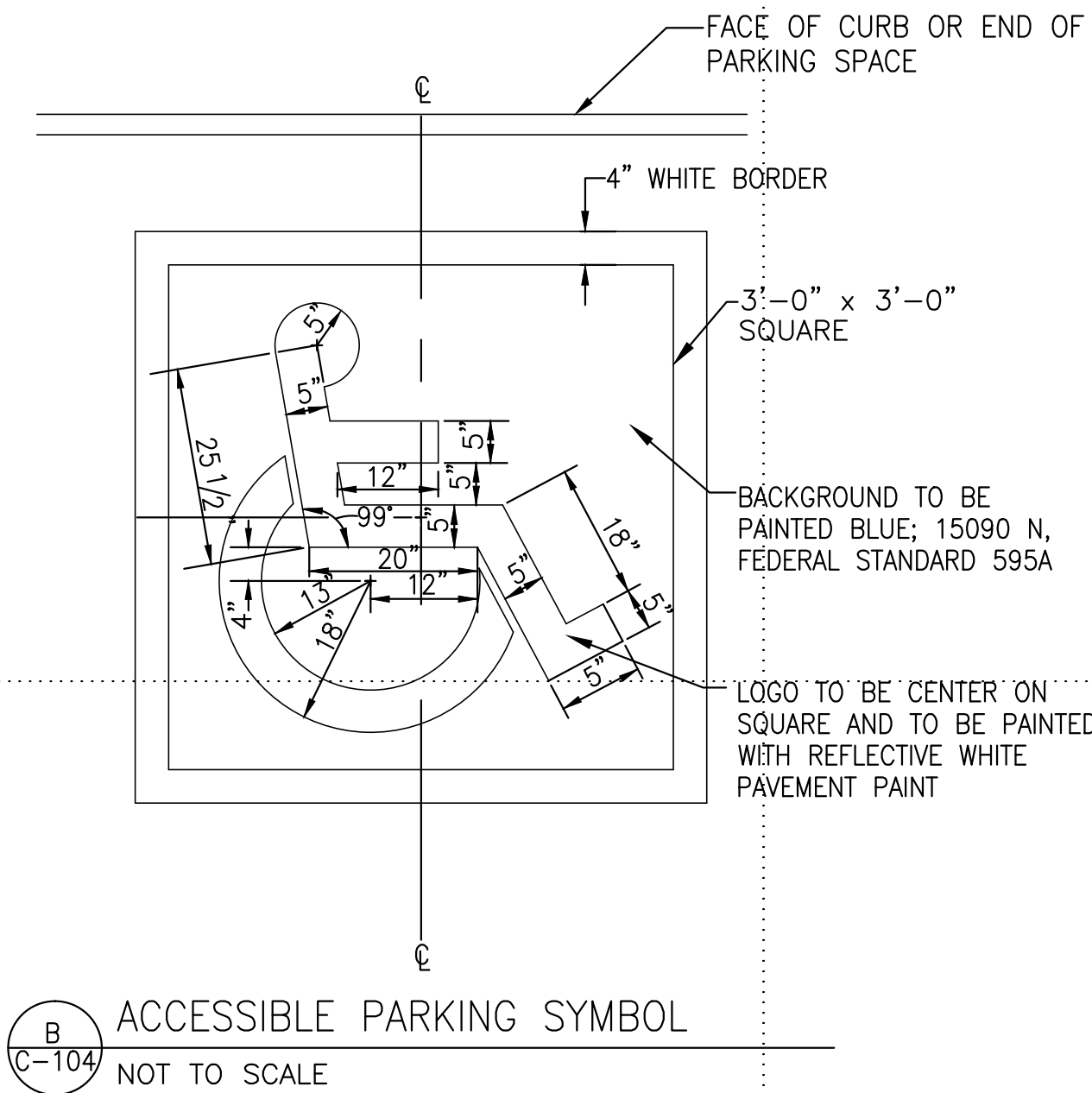
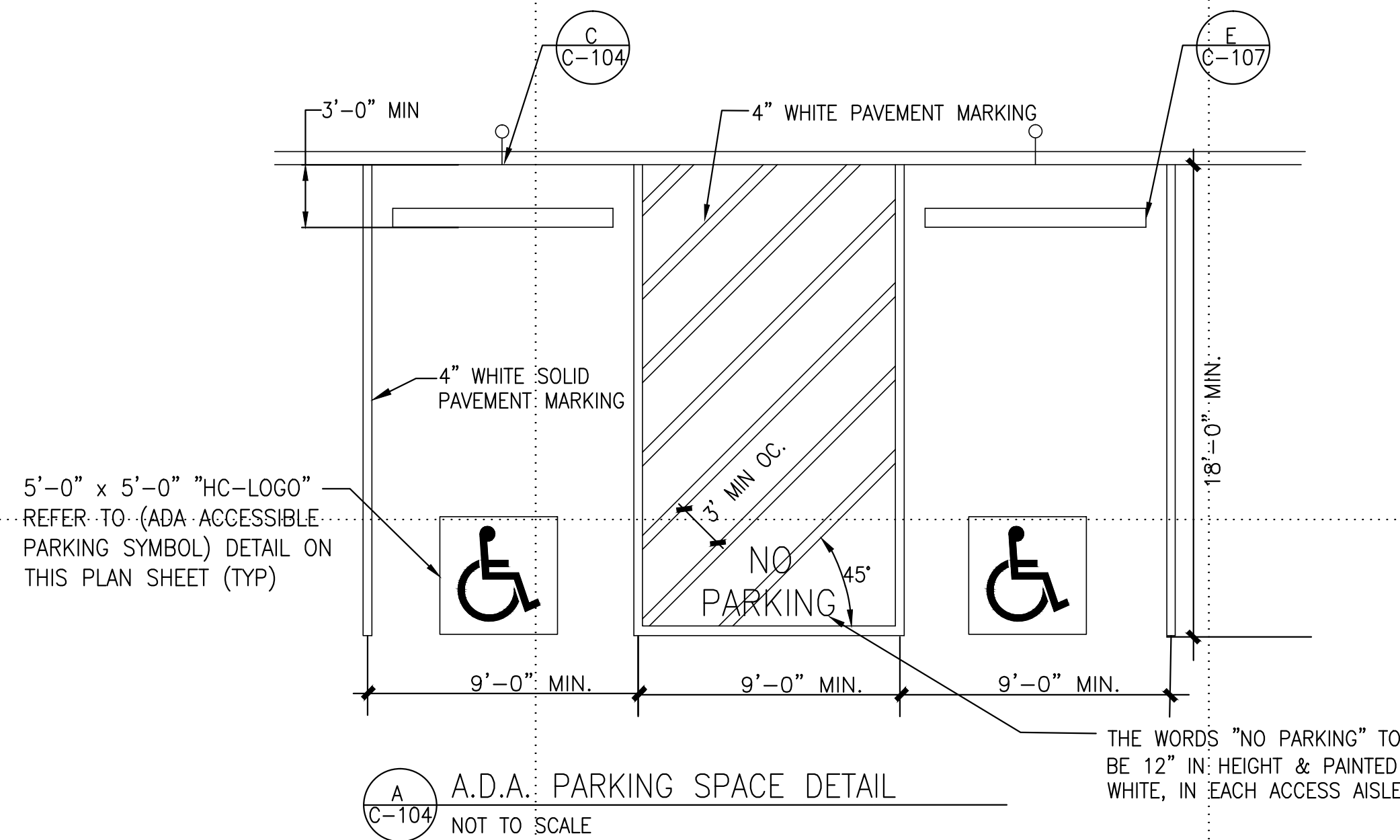
DATE:	
REVISION:	

DESIGNED BY:	I.A.T.
DRAWN BY:	L.M.
REVIEWED BY:	I.A.T.
DATE:	4/10/2018
W.O. #	FF 00087 3J
SPEC. #	
SCALE:	1:10

DIRECTORATE OF
PUBLIC WORKS
FORT BLISS, TEXAS

20709 COMPLIANT ADA PARKING
SPACES AND SIDEWALK
PROPOSED CONSTRUCTION
PLAN

SHEET
NUMBER:
C-103
4 OF 8



REINFORCING-GENERAL NOTES:

1. REINFORCING FOR SIDEWALK SHALL BE 6 x 6 w1.4 x w1.4 WELD WIRE MESH AND REINFORCING FOR CONCRETE CURBS SHALL BE AS INDICATED ON DETAILS.
2. REINFORCING STEEL BARS SHALL CONFORM TO ASTM A-615-A GRADE 60.
3. ALL WELDED WIRE FABRIC SHALL CONFORM TO SPECIFICATIONS FOR "STEEL WELDED WIRE FABRIC, PLAIN, FOR CONCRETE REINFORCEMENT" ASTM A-185.

CONCRETE-GENERAL NOTES:

1. REINFORCING FOR CONCRETE SHALL BE THE SAME AS INDICATED IN THE DETAILS.
2. ALL CONCRETE AREA SHALL HAVE AN EXPANSION JOINT OF 1/2" PRE-MOLDED ASPHALT BOARD EVERY 20' IN ADDITION, ALL SIDEWALK AND CURB SHALL BE GROOVED 1/2" DEEP TO FORM A PLANE OF WEAKNESS (CONTRACTION JOINT) EVERY 4' FOR SIDEWALK AND EVERY 10' FOR CURB.
3. THE CONCRETE SURFACE FOR RAMPS SHALL HAVE A ROUGH NON-SKID TYPE FINISH AS DIRECTED BY THE ENGINEER.
4. A WHITE PIGMENTED MEMBRANE CURING SHALL BE USED FOR THE SIDEWALK, DRIVEWAYS & CURB OR AS DIRECTED BY THE ENGINEER.
5. ALL CONCRETE WORK SHALL BE IN ACCORDANCE WITH ACI 318-02.
6. CONCRETE SHALL HAVE A COMPRESSIVE STRENGTH OF =3500 psi IN 28 DAYS UNLESS OTHERWISE NOTED.

TRIANGULAR SLIPBASE ASSEMBLY-BOLTING PROCEDURES

1. ASSEMBLE SIGN POST, BOLT KEEPER PLATE AND STUB POST WITH BOLTS AND THREE FLAT WASHERS PER BOLT AS SHOWN.
2. SHIM AS REQUIRED TO PLUMB POST.
3. TIGHTEN ALL BOLTS THE MAXIMUM POSSIBLE WITH 12 TO 15 INCH WRENCH TO CLEAN BOLTS THREADS AND TO BED WASHERS AND SHIMS.
4. LOOSEN EACH BOLT IN SEQUENCE AND RE-TIGHTEN BOLTS IN A SYSTEMATIC ORDER TO THE PRESCRIBED TORQUE. DO NOT OVER TIGHTEN.
5. TO PREVENT NUT LOOSENING, BURR THREADS OF BOLT AT JUNCTION WITH NUT USING A CENTER PUNCH.

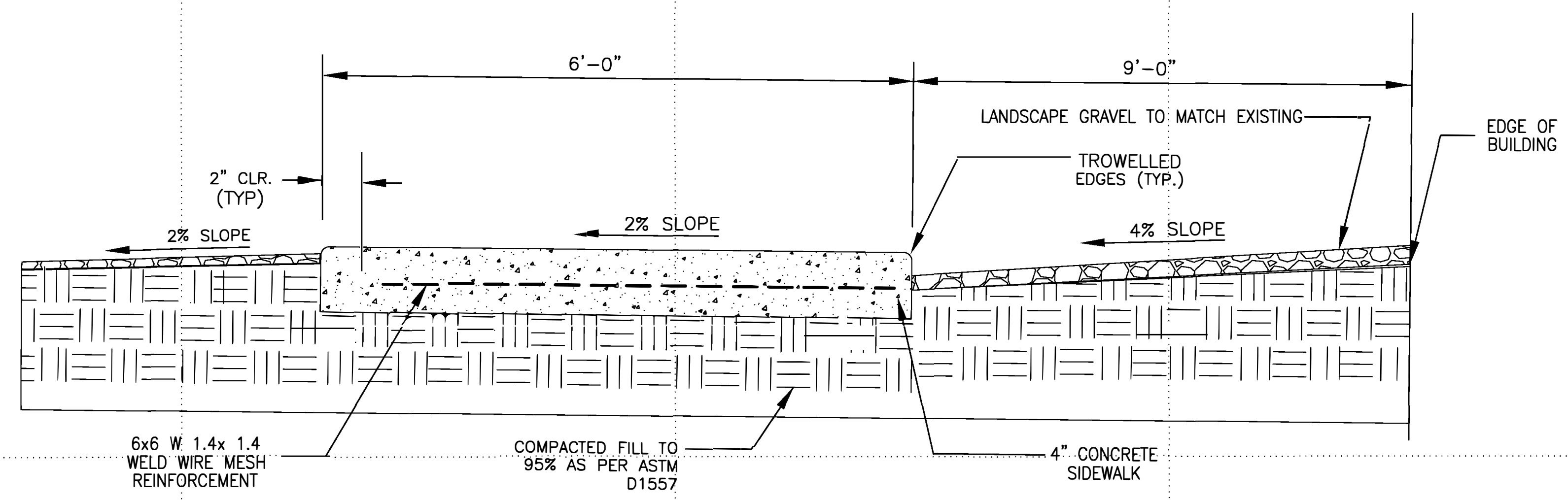
DATE	DESCRIPTION

DESIGNED BY: I.A.T.	DATE: 4/10/2018	W.O. # FF 00087 3J
DRAWN BY: L.M.	REVIEWED BY: I.A.T.	SPEC. #
SCALE:		

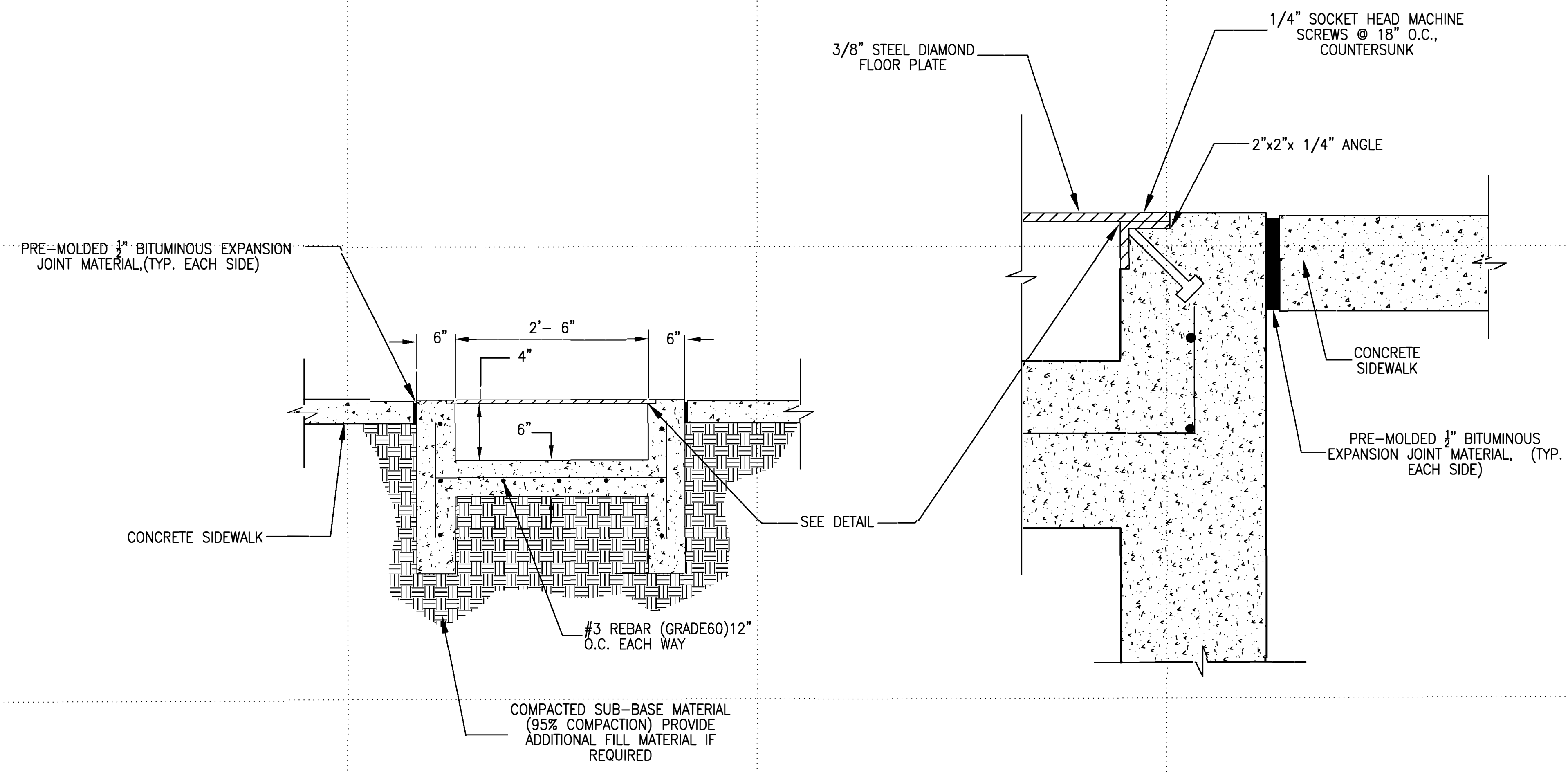
DIRECTORATE OF PUBLIC WORKS
FORT BLISS, TEXAS

20709 COMPLIANT ADA PARKING SPACES AND SIDEWALK TRAFFIC SIGNS AND STRIPPING DETAILS

SHEET NUMBER:
C-104
5 OF 8



A SIDEWALK SECTION
 C105 NOT TO SCALE



B CONCRETE FLUME SECTION
 C105 NOT TO SCALE

GENERAL NOTES

1. REINFORCING FOR SIDEWALK SHALL BE 6 x 6 w1.4 x w1.4 WELD WIRE MESH AND REINFORCING FOR CONCRETE CURBS SHALL BE AS INDICATED ON DETAILS.
2. REINFORCING STEEL BARS SHALL CONFORM TO ASTM A-615-A GRADE 60.
3. ALL WELDED WIRE FABRIC SHALL CONFORM TO SPECIFICATIONS FOR "STEEL WELDED WIRE FABRIC, PLAIN, FOR CONCRETE REINFORCEMENT" ASTM A-185.
4. ALL REINFORCEMENT SHALL BE DELIVERED TO THE JOB SITE FREE OF CORROSION.
5. ALL REINFORCING STEEL BARS BE PLACED AND OR STOPPED A MIN. OF 2" CLEARANCE FROM EDGE OF PROPOSED CONCRETE. REINFORCEMENT BARS SHALL MEET ALL THE REQUIREMENTS FOR CONCRETE PLACEMENT.

CONCRETE GENERAL NOTES

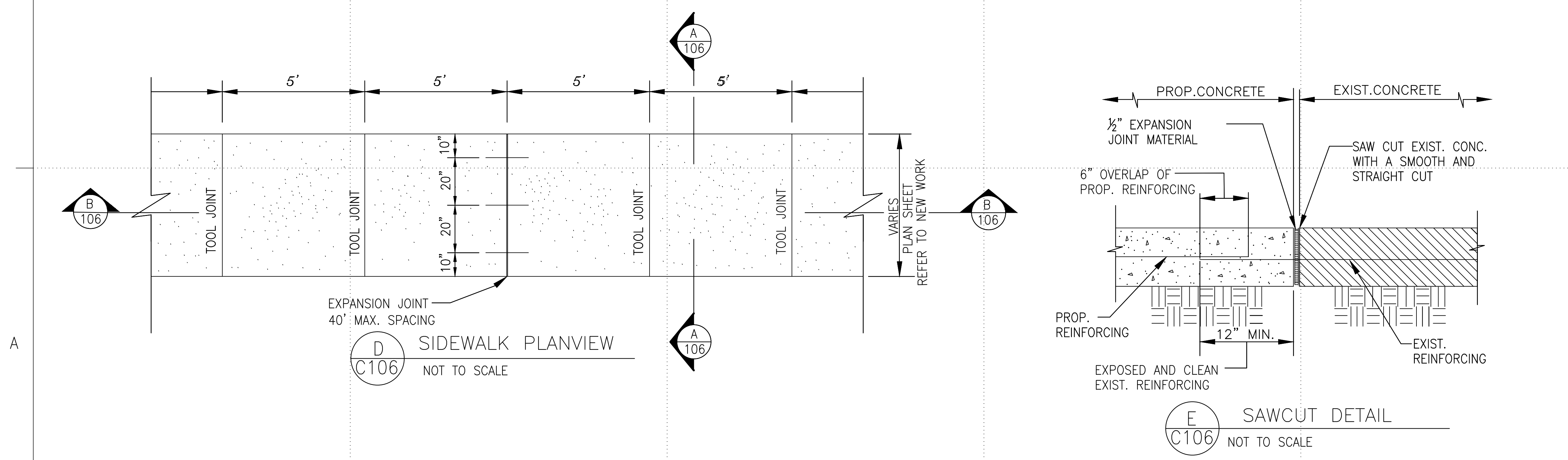
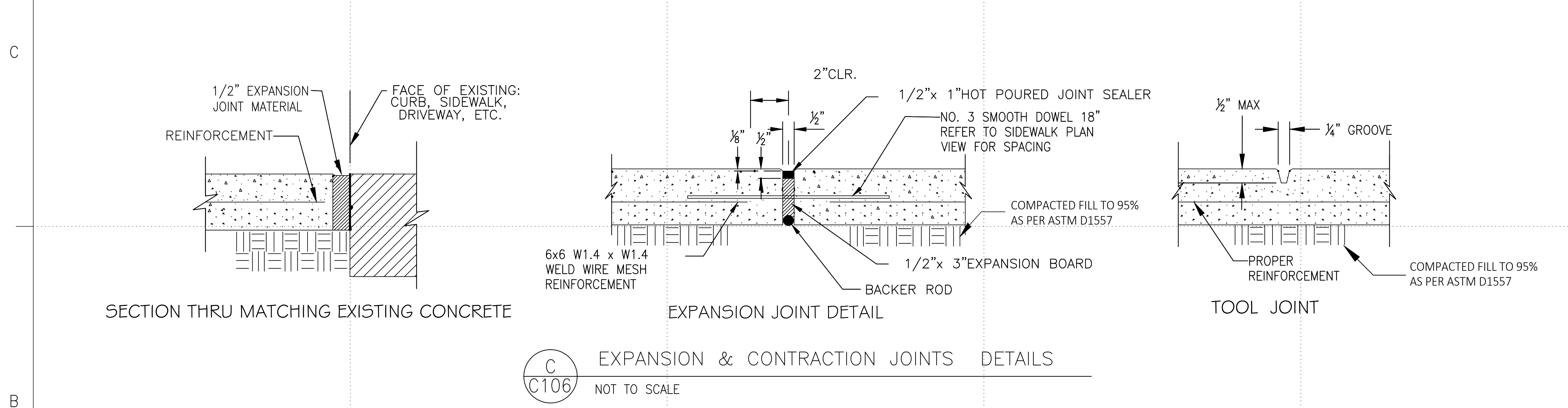
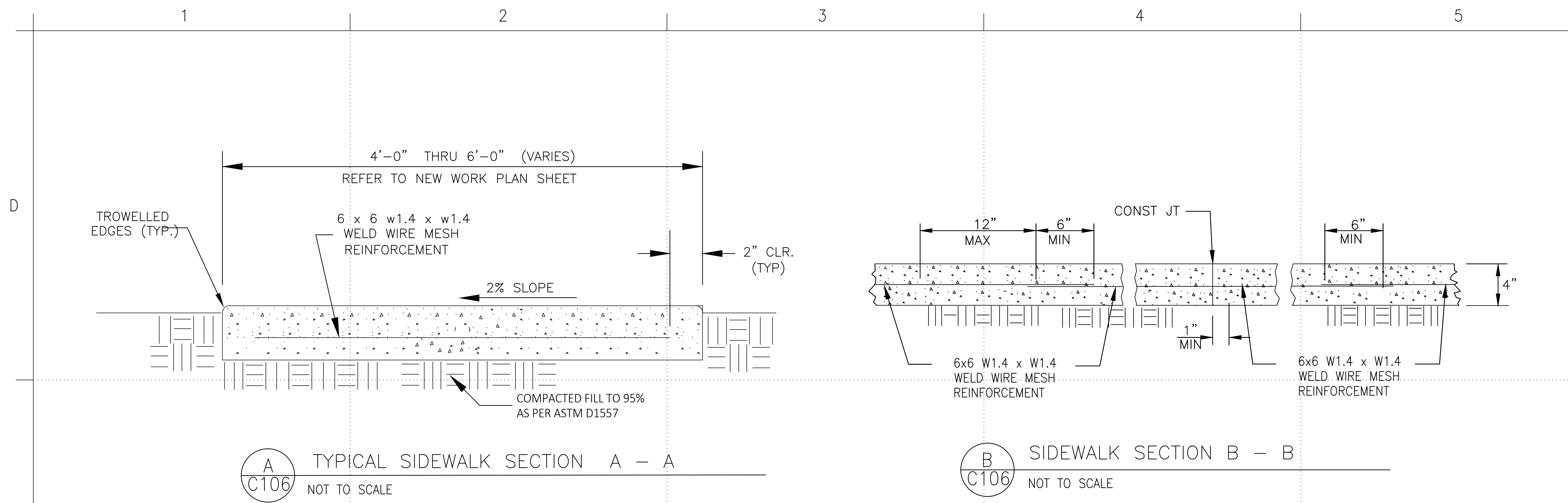
1. REINFORCING FOR CONCRETE SHALL BE THE SAME AS INDICATED IN THE DETAILS.
2. ALL CONCRETE AREA SHALL HAVE AN EXPANSION JOINT OF 1/2" PRE-MOLDED ASPHALT BOARD EVERY 20' IN ADDITION, ALL SIDEWALK AND CURB SHALL BE GROOVED 1/2" DEEP TO FORM A PLANE OF WEAKNESS (CONTRACTION JOINT) EVERY 4' FOR SIDEWALK AND EVERY 10' FOR CURB.
3. THE CONCRETE SURFACE FOR RAMPS SHALL HAVE A ROUGH NON-SKID TYPE FINISH AS DIRECTED BY THE ENGINEER.
4. A WHITE PIGMENTED MEMBRANE CURING SHALL BE USED FOR THE SIDEWALK, DRIVEWAYS & CURB OR AS DIRECTED BY THE ENGINEER.
5. ALL CONCRETE WORK SHALL BE IN ACCORDANCE WITH ACI 318-02.
6. CONCRETE SLUMP SHALL NOT BE MORE THAN 4".
7. CONCRETE SHALL HAVE A COMPRESSIVE STRENGTH OF =3500 psi IN 28 DAYS UNLESS OTHERWISE NOTED.

DATE	DESCRIPTION

DATE: 4/10/2018	W.O. # JJ 00087 3J
DESIGNED BY: I.A.T.	DRAWN BY: L.M.
REVIEWED BY: I.A.T.	SPEC. #
SCALE: NTS	

DIRECTORATE OF PUBLIC WORKS
 FORT BLISS, TEXAS

20709 COMPLIANT ADA PARKING SPACES AND SIDEWALK FLUME DETAILS



GENERAL NOTES

1. REINFORCING FOR SIDEWALK SHALL BE 6 x 6 w1.4 x w1.4 WELD WIRE MESH AND REINFORCING FOR CONCRETE CURBS SHALL BE AS INDICATED ON DETAILS.
2. REINFORCING STEEL BARS SHALL CONFORM TO ASTM A-615-A GRADE 60.
3. ALL WELDED WIRE FABRIC SHALL CONFORM TO SPECIFICATIONS FOR "STEEL WELDED WIRE FABRIC, PLAIN, FOR CONCRETE REINFORCEMENT" ASTM A-185.
4. ALL REINFORCEMENT BARS SHALL BE DELIVERED TO THE JOB SITE FREE OF CORROSION.
5. ALL REINFORCING STEEL BARS SHALL BE PLACED AND OR STOPPED A MINIMUM OF 2" CLEARANCE FROM EDGE OF PROPOSED CONCRETE. REINFORCING BARS SHALL MEET ALL THE REQUIREMENTS FOR CONCRETE PLACEMENT.

CONCRETE GENERAL NOTES

1. REINFORCING FOR CONCRETE SHALL BE THE SAME AS INDICATED IN THE DETAILS.
2. ALL CONCRETE AREA SHALL HAVE AN EXPANSION JOINT OF 1/2" PRE-MOLDED ASPHALT BOARD EVERY 20' IN ADDITION, ALL SIDEWALK AND CURB SHALL BE GROOVED 1/2" DEEP TO FORM A PLANE OF WEAKNESS (CONTRACTION JOINT) EVERY 4' FOR SIDEWALK AND EVERY 10' FOR CURB.
3. THE CONCRETE SURFACE FOR RAMPS SHALL HAVE A ROUGH NON-SKID TYPE FINISH AS DIRECTED BY THE ENGINEER.
4. A WHITE PIGMENTED MEMBRANE CURING SHALL BE USED FOR THE SIDEWALK, DRIVEWAYS & CURB OR AS DIRECTED BY THE ENGINEER.
5. ALL CONCRETE WORK SHALL BE IN ACCORDANCE WITH ACI 318-02.
6. CONCRETE SLUMP SHALL BE NO MORE THAN 4"
7. CONCRETE SHALL HAVE A COMPRESSIVE STRENGTH OF =3500 psi IN 28 DAYS UNLESS OTHERWISE NOTED.

DATE	
MARK	
DESCRIPTION	

DESIGNED BY: I.A.T.	DATE: 4/10/2018
DRAWN BY: L.M.	W.O. # FF 00087 3/J
REVIEWED BY: I.A.T.	SPEC. #
SCALE: NTS	

DIRECTORATE OF PUBLIC WORKS
FORT BLISS, TEXAS

20709 COMPLIANT ADA PARKING SPACES AND SIDEWALK SIDEWALK DETAILS

SHEET NUMBER:
C-106
7 OF 8

1

2

3

4

5

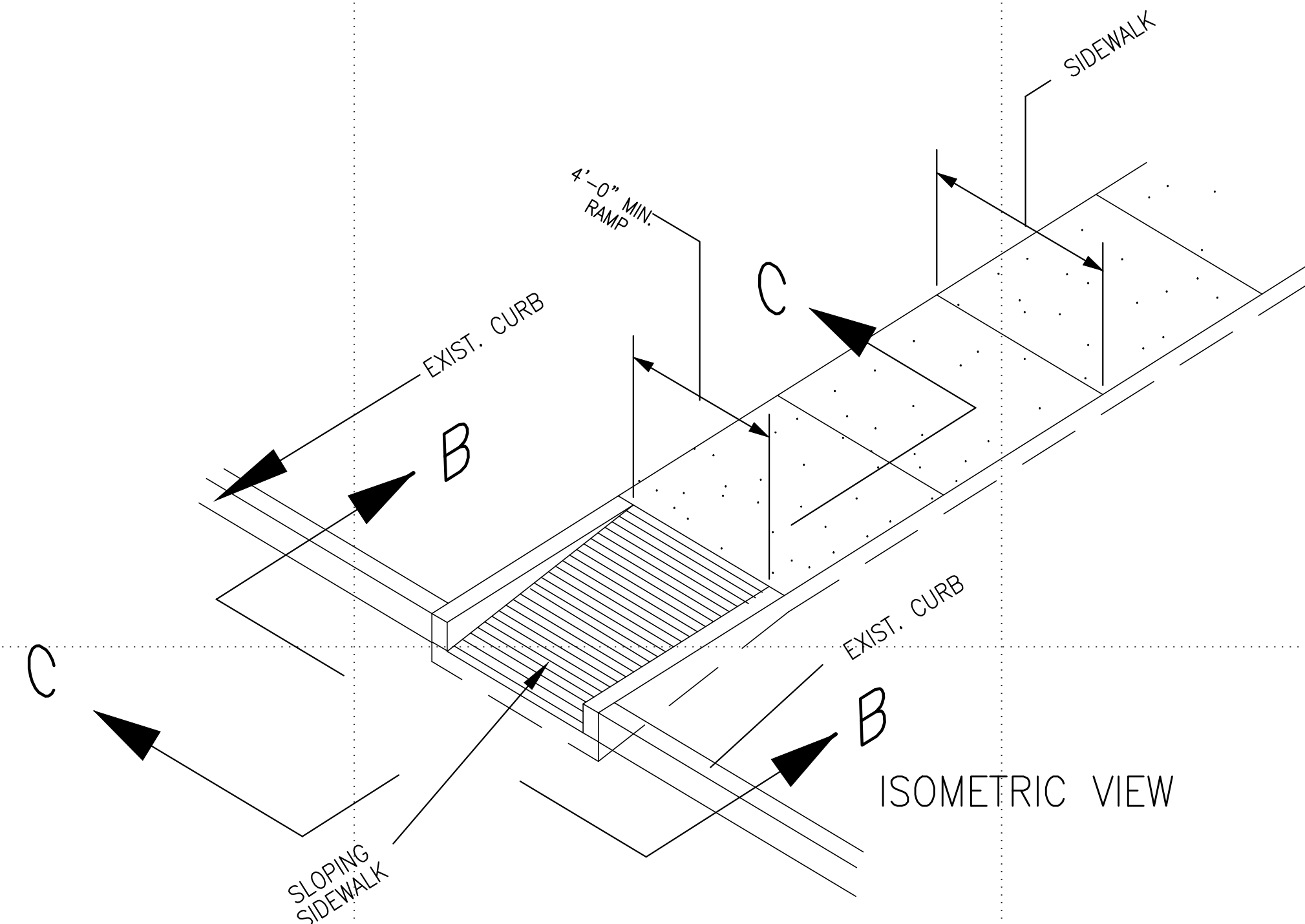
6

D

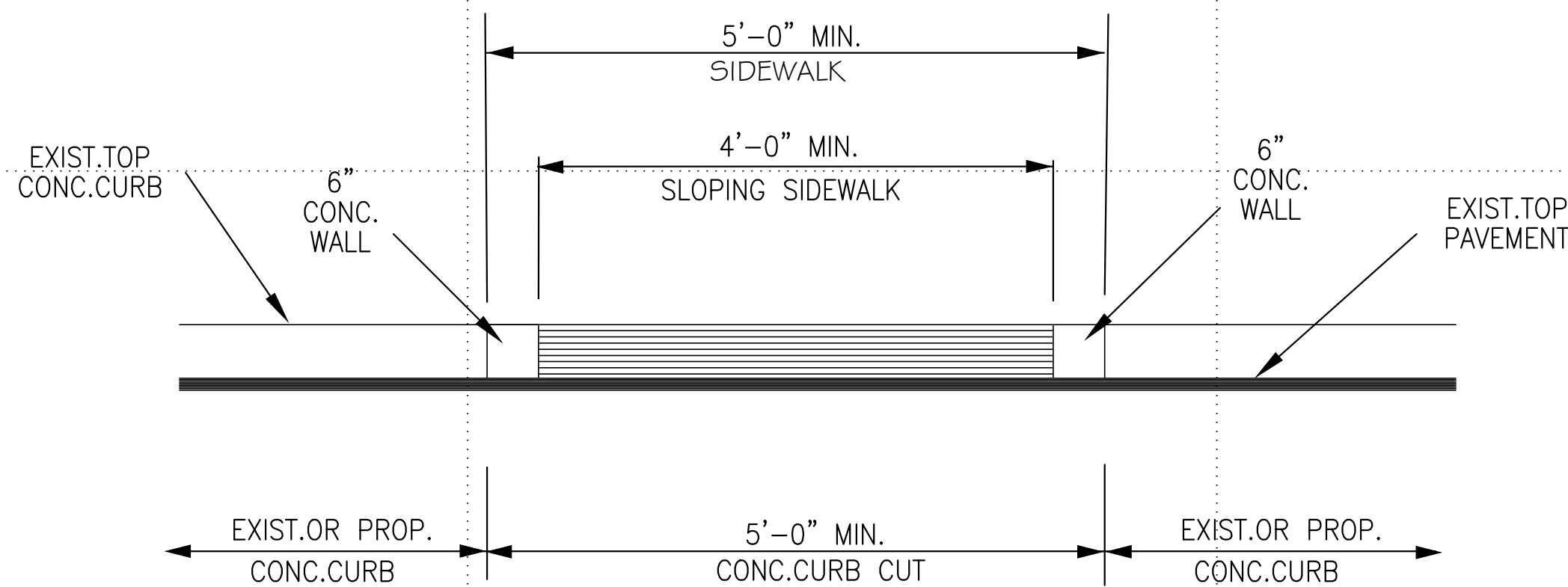
C

B

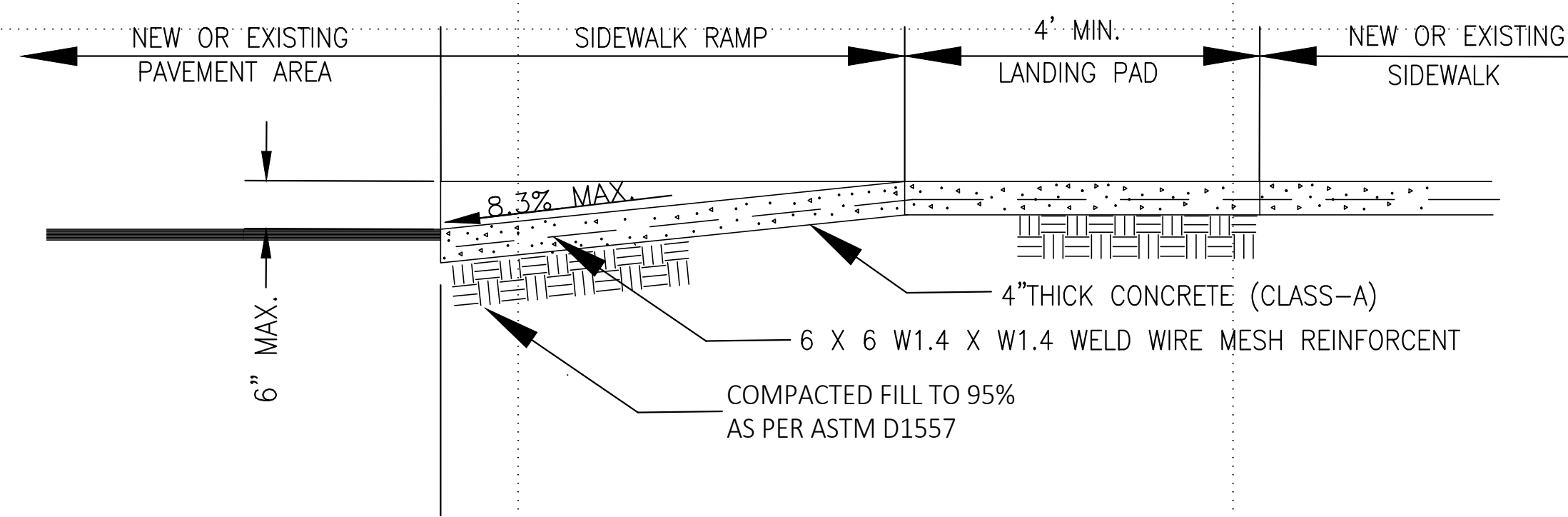
A



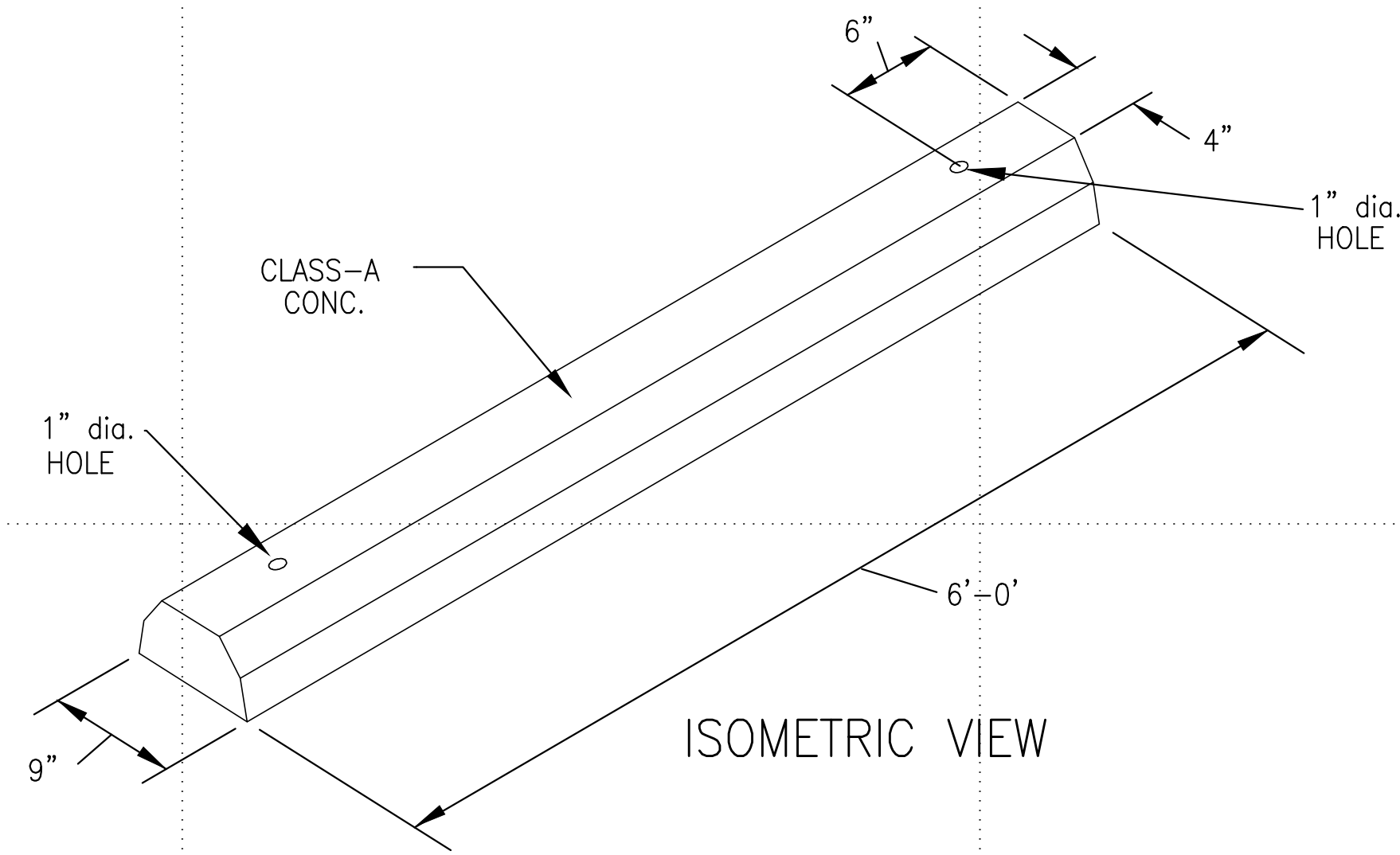
A SIDEWALK RAMP WITH CURB CUT DETAILS
C107 NOT TO SCALE



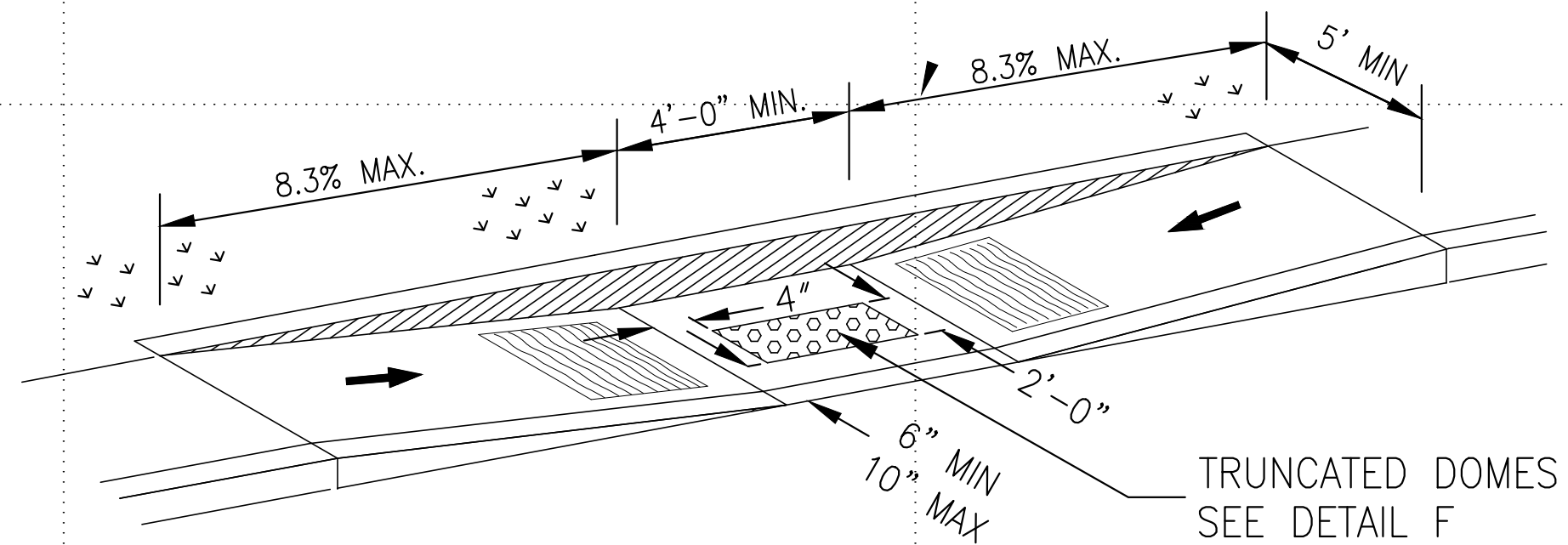
B SECTION B - B
C107 NOT TO SCALE



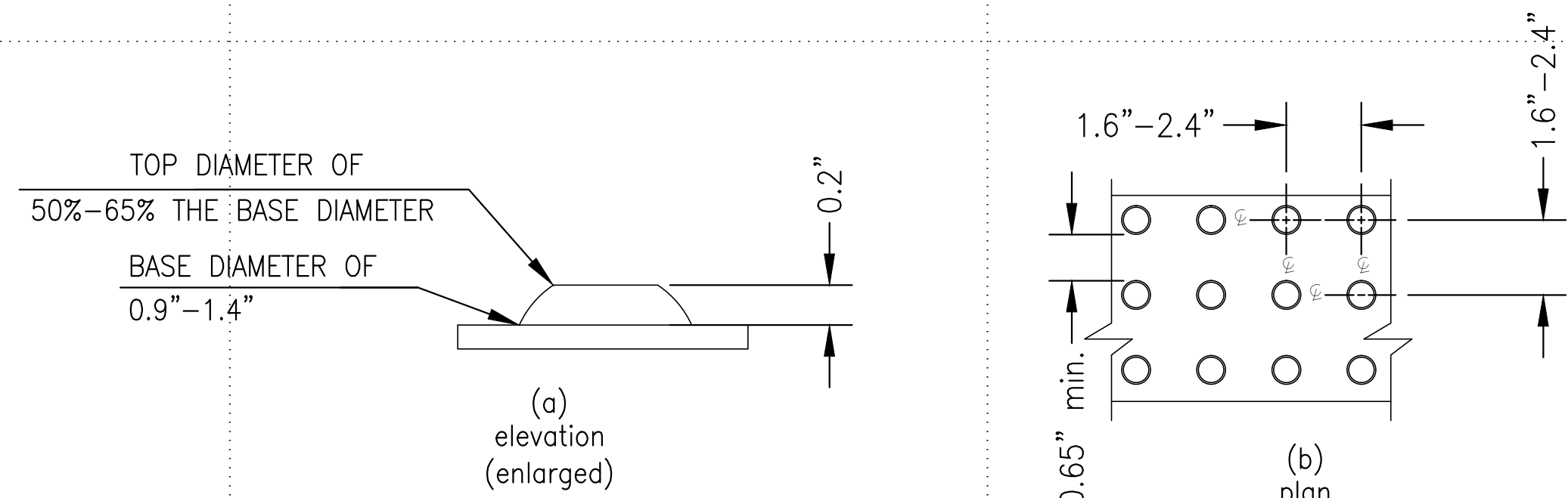
C SECTION C - C
C107 NOT TO SCALE



E PRECAST CONCRETE WHEEL STOP
C107 NOT TO SCALE



D TYPE 2 ADA RAMP
C107 NOT TO SCALE



F SIZE AND SPACING OF TRUNCATED DOMES
C107 NOT TO SCALE

GENERAL NOTES

1. ALL SLOPES ARE MAXIMUM ALLOWABLE. THE LEAST POSSIBLE SLOPE THAT WILL STILL DRAIN PROPERLY SHOULD BE USED. ADJUST CURB RAMP LENGTH OR GRADE OF APPROACH SIDEWALKS AS DIRECTED.
2. LANDINGS SHALL BE 5'-0" x 5'-0" MINIMUM WITH A MAXIMUM 2% SLOPE IN ANY DIRECTION.
3. MANEUVERING SPACE AT THE BOTTOM OF THE CURB RAMP SHALL BE A MINIMUM OF 4'-0" x 4'-0" WHOLLY CONTAINED WITHIN THE CROSSWALK AND WHOLLY OUTSIDE THE PARALLEL VEHICULAR TRAVEL PATH.
4. MAXIMUM ALLOWABLE CROSS SLOPE ON SIDEWALK AND CURB RAMP SURFACES IS 2%.
5. ADDITIONAL INFORMATION ON CURB RAMP LOCATION, DESIGN, LIGHT REFLECTIVE VALUE AND TEXTURE MAY BE FOUND IN THE CURRENT "ADA STANDARDS FOR ACCESSIBLE DESIGN."
6. PROVIDE A SMOOTH TRANSITION WHERE THE CURB RAMP CONNECTS TO THE STREET.
7. CURBS SHOWN WITHIN THE LIMITS OF PAYMENT ARE CONSIDERED PART OF THE CURB FOR PAYMENT, WHETHER IT IS CONCRETE CURB, GUTTER, OR COMBINED CURB AND GUTTER.
8. FLARE SLOPE NOT EXCEED 10% MEASURED ALONG CURB LINE.

DETECTABLE WARNING SURFACES

1. CURB RAMP MUST CONTAIN A DETECTABLE WARNING SURFACE THAT CONSIST OF RAISED TRUNCATED DOMES COMPLYING WITH SECTION 705 OF THE AMERICANS WITH DISABILITIES ACT (ADA). THE SURFACE MUST CONTRAST VISUALLY WITH ADJOINING SURFACES, INCLUDING SIDE FLARES. FURNISH DARK BROWN OR DARK RED DETECTABLE WARNING SURFACE ADJACENT TO UNCOLORED CONCRETE, UNLESS SPECIFIED ELSEWHERE IN THE PLANS.
2. DETECTABLE WARNING SURFACES MUST BE SLIP RESISTANT AND NOT ALLOW WATER TO ACCUMULATE.
3. ALIGN TRUNCATED DOMES IN THE DIRECTION OF PEDESTRIAN TRAVEL WHEN ENTERING THE STREET.
4. SHADED AREAS ON DETAILS, INDICATE THE APPROXIMATE LOCATION FOR THE DETECTABLE WARNING SURFACE FOR EACH CURB RAMP TYPE.
5. DETECTABLE WARNING SURFACES SHALL BE A MINIMUM OF 24" IN DEPTH IN THE DIRECTION OF PEDESTRIAN TRAVEL, AND EXTEND THE FULL WIDTH OF THE CURB RAMP OR LANDING WHERE THE PEDESTRIAN ACCESS ROUTE ENTERS THE STREET.
6. DETECTABLE WARNING SURFACES SHALL BE LOCATED SO THAT THE EDGE NEAREST THE CURB LINE IS A MINIMUM OF 6" AND A MAXIMUM OF 10" FROM THE EXTENSION OF THE FACE OF CURB. DETECTABLE WARNING SURFACES MAY BE CURVED ALONG THE CORNER RADIUS.

DATE	
MARK	
DESCRIPTION	

DESIGNED BY:	I.A.T.	DATE:	4/10/2018
DRAWN BY:	L.M.	W.O. #	FF 00087 3J
REVIEWED BY:	I.A.T.	SPEC. #	
SCALE:	NTS		

DIRECTORATE OF PUBLIC WORKS
FORT BLISS, TEXAS



20709 COMPLIANT ADA PARKING SPACES AND SIDEWALK ADA CONCRETE RAMP DETAILS

SHEET NUMBER:	C-107
	8 OF 8