

Introducing...

**AN EXCLUSIVE
LISTING OF
BRAND-NEW
LUXURY 2BED
APARTMENTS
OFF BISOLA
DUROSINMI-ETTI
DRIVE, LEKKI
PHASE 1,
LAGOS**



**A MARKETING
PRESENTATION**

BY

**GEMINI PLACE
APARTMENTS LTD**

A low-angle photograph of a modern, multi-story apartment building. The building features a light-colored, textured facade with large glass windows and balconies. The balconies have glass railings. To the right, a dark, vertical section of the building is visible, featuring horizontal slats. The sky is overcast and grey.

4 apartments of
2 bedrooms with
1 BQ on 4 floors

Offered for Lease by Gemini Place Apartments Ltd

BEAUTIFULLY FINISHED BLOCK OF FLATS



IN A VERY NEAT COMPOUND



WELL PROPORTIONED AND FINISHED FLATS



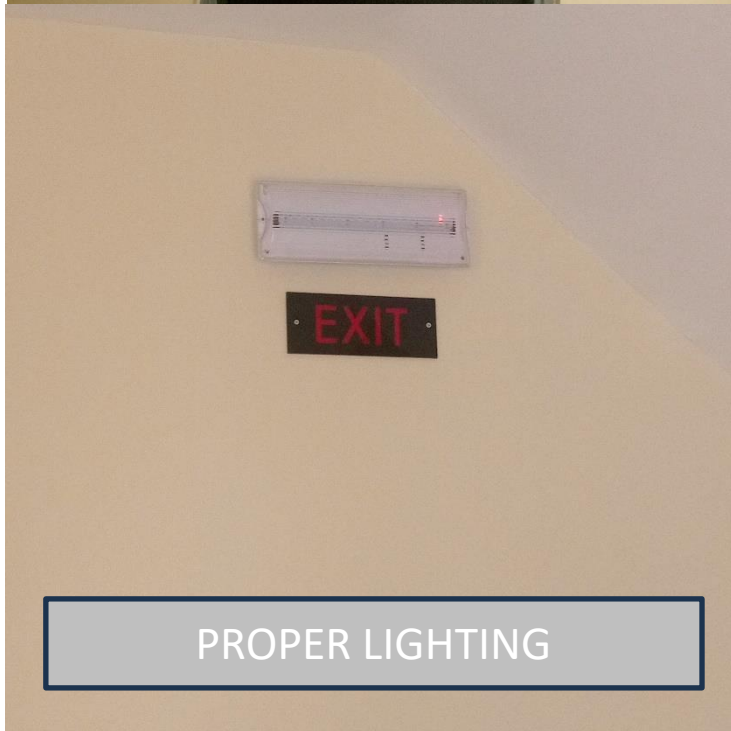
Offered for Lease by Gemini Place Apartments Ltd

WELL PROPORTIONED AND FINISHED FLATS...



Offered for Lease by Gemini Place Apartments Ltd

WITH INCREDIBLE ATTENTION TO DETAIL



EACH FLAT HAS ITS' OWN LAUNDRY AREA



EACH FLAT HAS ITS' OWN INVERTER SYSTEM

BRAND NEW INVERTER WITH BATTERY



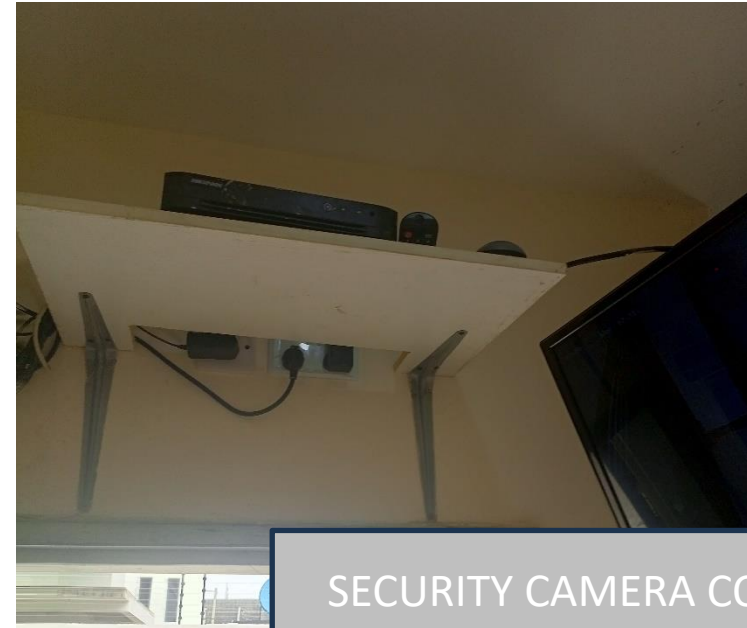
SUPPORTED WITH FULL SOLAR SYSTEMS ON THE ROOF

A LOVELY AND AIRY ROOF TERRACE FOR YOUR ENJOYMENT AND RELAXATION NEEDS.



PERFECT ENTERTAINMENT SPOT WITH BBQ
AREA, WASH HAND BASIN, TOILET, FRONT &
BACK EXITS.

TRIPLE SECURITY SYSTEM – GUARD, ELECTRIC FENCE AND SECURITY CAMERA.



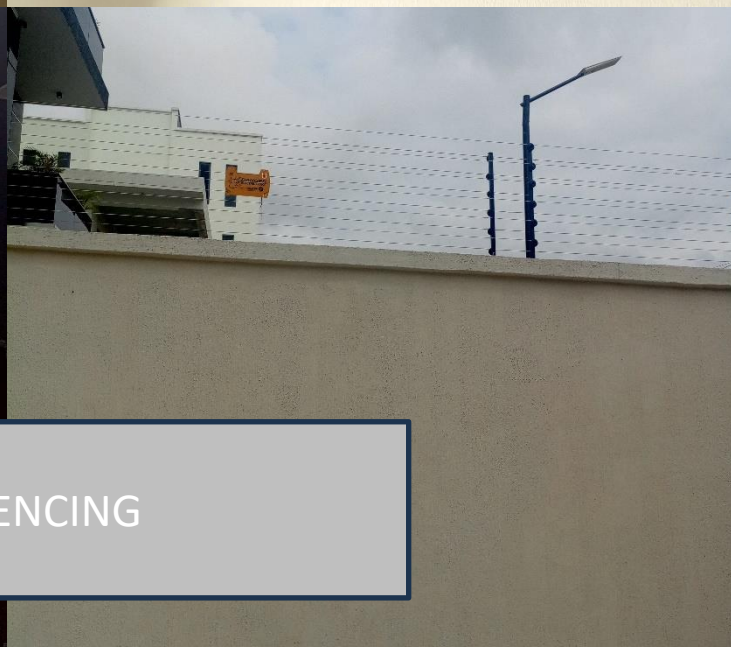
SECURITY CAMERA CONTROL SYSTEM IN
FACILITY OFFICE



SUPPORTED BY SECURITY CAMERA
IN GUARD ROOM

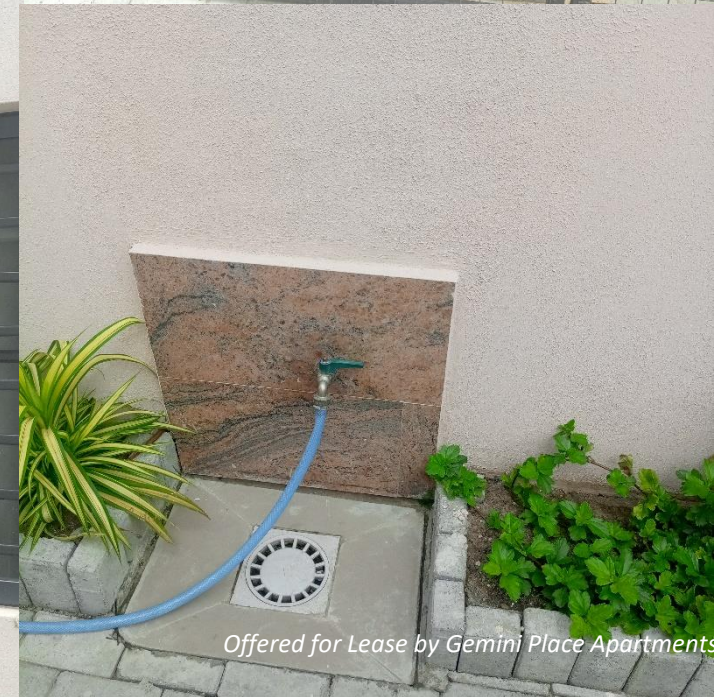
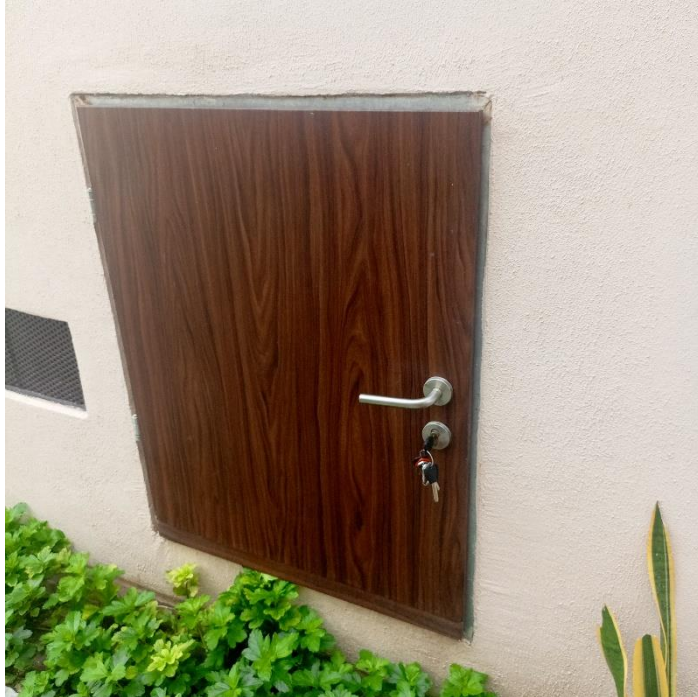


ELECTRIC FENCING

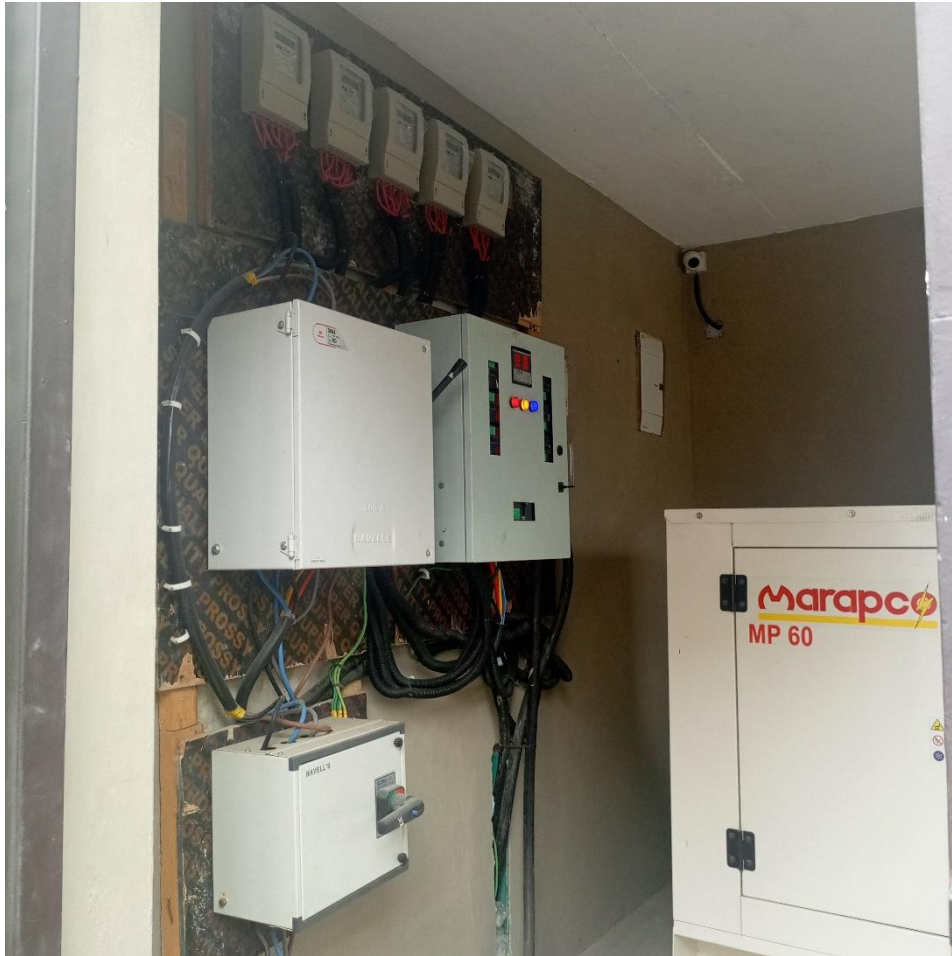


SUPPORTED BY ALARM SYSTEM IN
GUARD ROOM

NEAT AND WELL THOUGHT-OUT COMMON AND UTILITY AREAS




LARGE CAPACITY BACK-UP GENERATOR SYSTEM



Leasing Fast!!!

TYPE	AMOUNT
Rent	N10,500,000
Service Charge	N1,500,000
Agency Fee	10%
Legal Fee	10%
Caution Deposit	TBD



To Lease This Luxurious
2bedroom Apartment in the
heart of Lekki Phase 1, contact
us today:

GEMINI PLACE APARTMENTS LTD

Email: eyitemit@geminiplaceng.com
Phone: +2348024394990

