

ARTIFACT *Signs*

Typical
25%
SAVINGS OVER
INDUSTRY
LEADERS

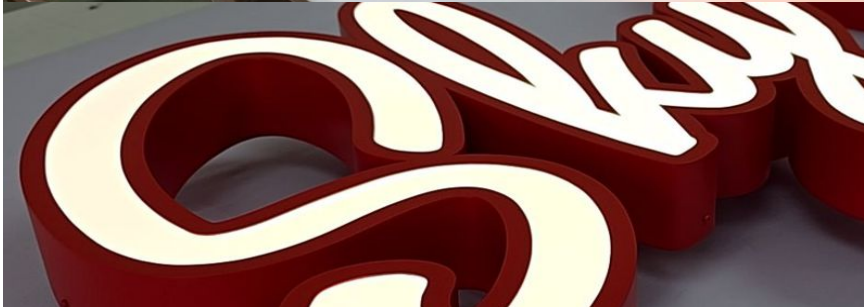
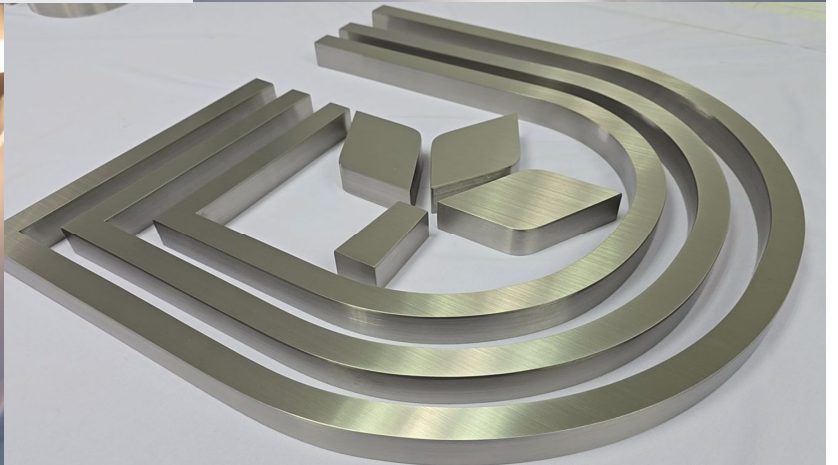
**MOST ORDERS
SHIP IN
2 WEEKS
OR LESS**

Artifact-Signs.com



2026 Wholesale Price Catalog

Artifact-Signs.com



Sales@Artifact-TH.com

2026 Wholesale Price Catalog



Artifact-Signs.com

TABLE OF CONTENTS

<u>PG. 4</u>	SOLID - FLAT CUT - ALUMINUM - BRUSHED
<u>PG. 5</u>	SOLID - FLAT CUT - ALUMINUM - PAINTED
<u>PG. 6</u>	FABRICATED FINISH OPTIONS
<u>PG. 7</u>	FABRICATED NON-LIT
<u>PG. 8</u>	FABRICATED NON-LIT + CLOSED BACK
<u>PG. 9</u>	FABRICATED + LEXAN BACK (ADD YOUR OWN LEDS)
<u>PG. 10</u>	FABRICATED HALO-LIT
<u>PG. 11</u>	FABRICATED EDGE-LIT
<u>PG. 12</u>	FABRICATED FACE-LIT RIBBON
<u>PG. 13</u>	FABRICATED FACE-LIT TRIMLESS
<u>PG. 14</u>	SHIPPING COSTS
<u>PG. 15</u>	FAQ'S



Sales@Artifact-TH.com

2026 Wholesale Price Catalog

Artifact-Signs.com

SOLID - FLAT CUT OUT

ALUMINUM

Brushed (Grained)



NOTES:

Lead Time

~ **approx (10) working days to ship**

Paper Install Template

~ **INCLUDED** at no extra cost

Lowercase Letters

~ List pricing x 75%

Fractional Sizes

~ Round up to the next largest size

Mounting

~ 1/8" have plain backs, no mounting

~ 1/4" includes stud mounting

WHOLESALE NET PRICING

Listed in USD - Per Character

		Depth of Letters	
		1/8"	1/4"
Largest Dimension of Letter (Height or Width)	1"	8.9	8.9
	2"	9.3	9.3
	3"	12.0	12.0
	4"	15.9	15.9
	5"	18.6	18.6
	6"	22.6	22.6
	7"	27.5	27.5
	8"	28.8	28.8
	9"	30.6	30.6
	10"	33.2	33.2
	11"	36.7	36.7
	12"	38.5	38.5
	13"	42.1	42.1
	14"	46.1	46.1
	15"	50.9	50.9
	16"	53.5	53.5
	17"	58.9	58.9
	18"	60.7	60.7

Logos and Shapes by Quote

Larger Size Available by Quote

Shipping Costs on Page 14

Sales@Artifact-TH.com

2026 Wholesale Price Catalog

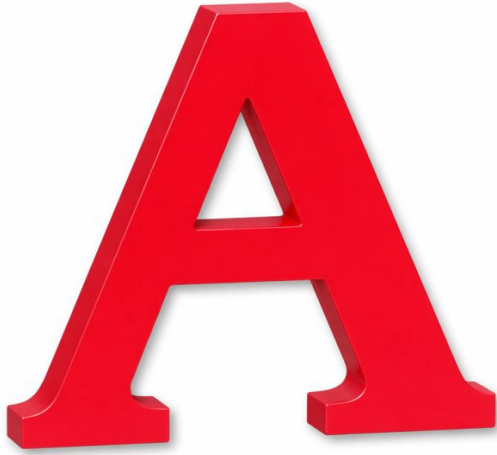


Artifact-Signs.com

SOLID - FLAT CUT OUT

ALUMINUM

Painted



NOTES:

Lead Time

~ **approx (10) working days to ship**

Paper Install Template

~ **INCLUDED** at no extra cost

Lowercase Letters

~ List pricing x 75%

Fractional Sizes

~ Round up to the next largest size

Mounting

~ 1/8" have plain backs, no mounting

~ 1/4" includes stud mounting

WHOLESALE NET PRICING

Listed in USD - Per Character

Depth of Letters		
	1/8"	1/4"
1"	8.9	8.9
2"	9.3	9.3
3"	12.0	12.0
4"	15.9	15.9
5"	18.6	18.6
6"	22.6	22.6
7"	27.5	27.5
8"	28.8	28.8
9"	30.6	30.6
10"	33.2	33.2
11"	36.7	36.7
12"	38.5	38.5
13"	42.1	42.1
14"	46.1	46.1
15"	50.9	50.9
16"	53.5	53.5
17"	58.9	58.9
18"	60.7	60.7

Largest Dimension of Letter (Height or Width)

Logos and Shapes by Quote

Larger Size Available by Quote

Shipping Costs on Page 14



Sales@Artifact-TH.com

2026 Wholesale Price Catalog

Artifact-Signs.com

FABRICATED FINISH OPTIONS

INCLUDED FINISHES

#4 GRAINED



#8 MIRROR POLISHED



PAINTED



ADDITIONAL FINISHES + EXTRA COST

TITANIUMS COLORS - BRASS, BRONZE, COPPER AND BLACK - **BY QUOTE**



PAINT MASKING - **BY QUOTE**

316 ALLOY MARINE GRADE + 30%



Sales@Artifact-TH.com

2026 Wholesale Price Catalog

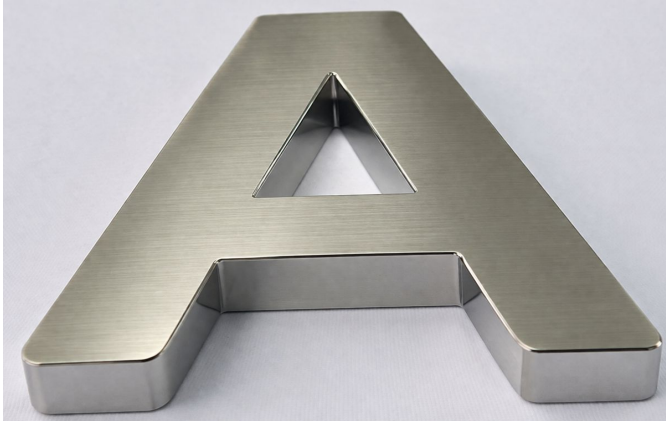


Artifact-Signs.com

FABRICATED NON-LIT

STAINLESS STEEL

Brushed (or) Polished (or) Painted (PG.6)



WHOLESALE NET PRICING

Listed in USD - Per Character

		Depth of Letters					
		0.5"	1"	1.5"	2"	2.5"	3"
Largest Dimension of Letter (Height or Width)	1"						
	2"						
	3"	34.1	37.2	40.3	43.0	45.4	47.8
	4"	34.1	37.2	40.3	45.2	48.7	52.2
	5"	34.1	37.2	40.3	48.3	51.8	55.4
	6"	35.8	38.5	43.0	49.6	54.7	59.8
	7"	39.0	42.1	46.5	53.1	58.5	63.8
	8"	41.7	46.5	49.6	57.2	63.6	69.9
	9"	44.3	51.3	56.7	66.0	69.8	73.5
	10"	47.8	56.7	60.2	69.9	74.4	78.8
	11"	51.8	60.2	66.0	73.5	78.1	82.8
	12"	56.3	64.6	69.5	79.3	84.1	89.0
	13"	61.7	69.5	74.0	86.3	91.4	96.5
	14"	66.3	74.9	83.2	95.2	100.9	106.7
	15"	73.8	83.2	88.2	102.7	109.1	115.5
	16"	77.7	87.7	94.3	108.9	116.3	123.6
	17"	81.7	92.1	98.7	115.5	122.9	130.2
	18"	87.6	98.7	107.2	124.9	132.4	139.9
	19"	95.0	107.2	113.3	134.2	142.1	150.1
	20"	99.0	111.6	121.8	142.1	149.9	157.6
	21"	104.9	118.2	129.3	147.9	155.2	162.5
	22"	112.8	127.1	139.9	155.4	161.4	167.4
	23"	122.2	137.7	151.9	170.5	175.6	180.6
	24"	135.1	152.4	170.5	189.1	195.2	201.5

NOTES:

Lead Time

~ **approx (10-12) working days to ship**

Paper Install Template

~ **INCLUDED** at no extra cost

Lowercase Letters

~ List pricing x 90%

Fractional Sizes

~ Round up to the next largest size

Mounting

~ All prices include stud mounting

TITANIUM FINISHES

~ AVAILABLE BY QUOTE

Logos and Shapes by Quote

Larger Size Available by Quote

Shipping Costs on Page 14



Sales@Artifact-TH.com

2026 Wholesale Price Catalog

Artifact-Signs.com

FABRICATED NON-LIT + METAL BACK

STAINLESS STEEL

Brushed (or) Polished (or) Painted (PG.6)

FRONT

BACK



NOTES:

Lead Time

~ **approx (10-12) working days to ship**

Paper Install Template

~ **INCLUDED** at no extra cost

Lowercase Letters

~ List pricing x 90%

Fractional Sizes

~ Round up to the next largest size

Mounting

~ All prices include stud mounting

TITANIUM FINISHES

~ AVAILABLE BY QUOTE

WHOLESALE NET PRICING

Listed in USD - Per Character

	Depth of Letters					
	0.5"	1"	1.5"	2"	2.5"	3"
1"		Smaller Sizes Available by Quote				
2"						
3"						
4"						
5"						
6"		50.1	55.8	64.5	71.1	77.7
7"		54.7	60.4	69.0	76.0	82.9
8"		60.4	64.5	74.3	82.6	90.9
9"		66.7	73.7	85.8	90.7	95.5
10"		73.7	78.3	90.9	96.7	102.5
11"		78.3	85.8	95.5	101.6	107.7
12"		84.1	90.4	103.1	109.4	115.7
13"		90.4	96.1	112.3	118.9	125.5
14"		97.3	108.2	123.7	131.3	138.7
15"		108.2	114.6	133.6	141.9	150.2
16"		114.0	122.6	141.6	151.1	160.6
17"		119.7	128.3	150.2	159.7	169.2
18"		128.3	139.3	162.4	172.1	181.9
19"		139.3	147.4	174.4	184.7	195.2
20"		145.1	158.3	184.7	194.8	204.9
21"		153.7	168.1	192.3	201.8	211.2
22"		165.2	181.9	202.0	209.8	217.6
23"		179.0	197.5	221.6	228.2	234.8
24"		198.0	221.6	245.8	253.9	261.9

Largest Dimension of Letter (Height or Width)

Logos and Shapes by Quote

Larger Size Available by Quote

Shipping Costs on Page 14

Sales@Artifact-TH.com

2026 Wholesale Price Catalog



Artifact-Signs.com

FABRICATED + LEXAN BACK (ADD YOUR OWN LEDS)

STAINLESS STEEL

Brushed (or) Polished (or) Painted (PG.6)



NOTES:

Lead Time

~ **approx (10-12) working days to ship**

Paper Install Template

~ **INCLUDED** at no extra cost

Lowercase Letters

~ List pricing x 90%

Fractional Sizes

~ Round up to the next largest size

Mounting

~ All prices include stud mounting

TITANIUM FINISHES

~ AVAILABLE BY QUOTE

WHOLESALE NET PRICING

Listed in USD - Per Character

		Depth of Letters					
		0.5"	1"	1.5"	2"	2.5"	3"
Largest Dimension of Letter (Height or Width)	1"		Smaller Sizes Available by Quote				
	2"						
	3"						
	4"						
	5"						
	6"		50.1	55.8	64.5	71.1	77.7
	7"		54.7	60.4	69.0	76.0	82.9
	8"		60.4	64.5	74.3	82.6	90.9
	9"		66.7	73.7	85.8	90.7	95.5
	10"		73.7	78.3	90.9	96.7	102.5
	11"		78.3	85.8	95.5	101.6	107.7
	12"		84.1	90.4	103.1	109.4	115.7
	13"		90.4	96.1	112.3	118.9	125.5
	14"		97.3	108.2	123.7	131.3	138.7
	15"		108.2	114.6	133.6	141.9	150.2
	16"		114.0	122.6	141.6	151.1	160.6
	17"		119.7	128.3	150.2	159.7	169.2
	18"		128.3	139.3	162.4	172.1	181.9
	19"		139.3	147.4	174.4	184.7	195.2
	20"		145.1	158.3	184.7	194.8	204.9
	21"		153.7	168.1	192.3	201.8	211.2
	22"		165.2	181.9	202.0	209.8	217.6
	23"		179.0	197.5	221.6	228.2	234.8
	24"		198.0	221.6	245.8	253.9	261.9

Logos and Shapes by Quote

Larger Size Available by Quote

Shipping Costs on Page 14



Sales@Artifact-TH.com

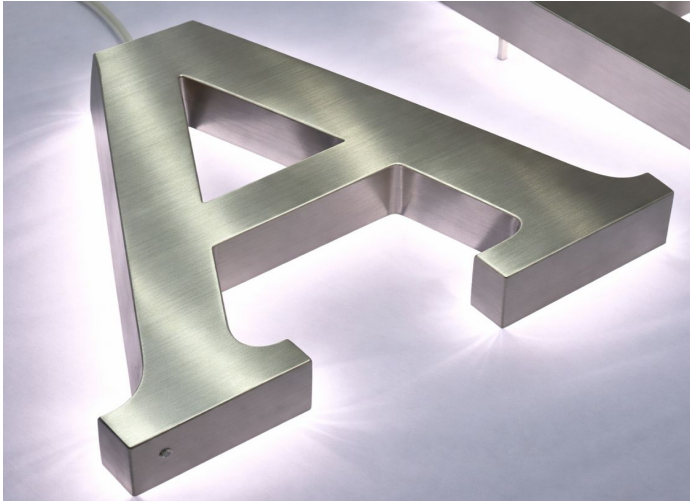
2026 Wholesale Price Catalog

Artifact-Signs.com

FABRICATED HALO-LIT

STAINLESS STEEL

Brushed (or) Polished (or) Painted (PG.6)



NOTES:

Lead Time

~ **approx (10-12) working days to ship**

Paper Install Template

~ **INCLUDED** at no extra cost

Lowercase Letters

~ List pricing x 90%

Fractional Sizes

~ Round up to the next largest size

Mounting

~ All prices include stud mounting

TITANIUM FINISHES

~ AVAILABLE BY QUOTE

COLORED VINYL

~ AVAILABLE BY QUOTE

WHOLESALE NET PRICING

Listed in USD - Per Character

		Depth of Letters					
		0.5"	1"	1.5"	2"	2.5"	3"
Largest Dimension of Letter (Height or Width)	1"		Smaller Sizes Available by Quote				
	2"						
	3"						
	4"						
	5"						
	6"		75.3	85.5	95.9		
	7"		81.3	91.6	102.3		
	8"		90.2	100.5	111.3		
	9"		92.1	101.8	112.5	117.8	123.1
	10"		100.0	109.8	121.8	127.5	133.3
	11"		108.1	117.8	128.4	135.3	142.1
	12"		116.0	125.3	135.5	139.9	144.3
	13"		123.6	133.3	145.7	150.3	155.0
	14"		134.6	144.3	156.8	161.6	166.5
	15"		145.7	152.8	169.6	174.7	179.7
	16"		151.0	159.0	171.8	178.0	184.2
	17"		160.3	170.1	182.9	189.3	195.7
	18"		170.1	180.6	199.3	205.2	211.2
	19"		183.4	194.4	211.2	215.7	220.1
	20"		193.0	207.7	227.6	231.6	235.6
	21"		202.8	220.5	241.7	244.7	247.6
	22"		215.7	235.1	255.0	258.4	261.7
	23"		228.5	250.2	273.6	276.3	279.0
	24"		249.3	271.9	298.0	300.4	302.9

Logos and Shapes by Quote

Larger Size Available by Quote

Shipping Costs on Page 14

PRICING INCLUDES:

~ LEDs - Standard 6500k White

(or) 3000k Warm White

~ Class 2 Power Supplies - Meanwell LPV-60-12

~ 10ft 2-wire Power Leads

~ UL Labels



Sales@Artifact-TH.com

2026 Wholesale Price Catalog

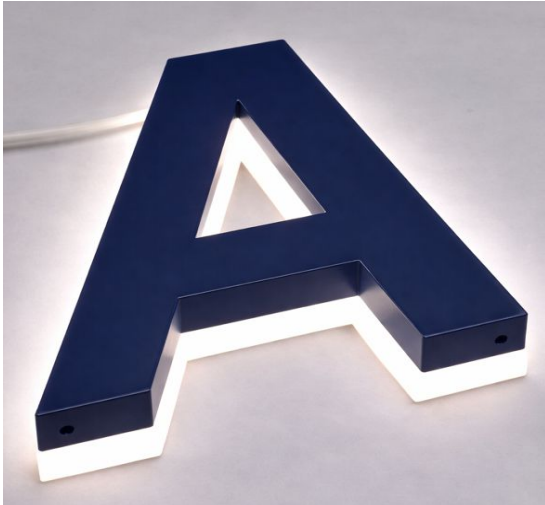


Artifact-Signs.com

FABRICATED EDGE-LIT

STAINLESS STEEL

Brushed (or) Polished (or) Painted (PG.6)



NOTES:

Lead Time

~ **approx (10-12) working days to ship**

Paper Install Template

~ **INCLUDED** at no extra cost

Lowercase Letters

~ List pricing x 90%

Fractional Sizes

~ Round up to the next largest size

Mounting

~ All prices include stud mounting

TITANIUM FINISHES

~ AVAILABLE BY QUOTE

COLORED VINYL

~ AVAILABLE BY QUOTE

WHOLESALE NET PRICING

Listed in USD - Per Character

		Depth of Letters					
		0.5"	1"	1.5"	2"	2.5"	3"
Largest Dimension of Letter (Height or Width)	1"		Smaller Sizes Available by Quote				
	2"						
	3"						
	4"						
	5"						
	6"		104.2	109.4	114.5		
	7"		112.8	118.8	124.9		
	8"		119.9	126.1	132.3		
	9"		136.0	142.2	148.4	157.1	165.8
	10"		147.4	153.5	159.7	168.8	178.0
	11"		159.2	165.1	171.1	180.2	189.3
	12"		170.1	176.2	182.4	191.4	200.5
	13"		181.5	188.5	195.5	206.5	217.4
	14"		197.1	206.6	216.2	227.6	238.9
	15"		213.2	221.6	229.9	241.7	253.5
	16"		225.1	231.2	237.5	250.3	263.3
	17"		235.9	245.4	254.9	268.5	282.0
	18"		255.3	265.5	275.6	290.8	305.9
	19"		275.8	286.5	297.3	310.8	324.2
	20"		292.3	302.1	311.9	325.3	338.7
	21"		304.1	315.1	326.0	340.3	354.7
	22"		325.0	335.6	346.3	360.6	374.8
	23"		344.0	356.0	367.9	383.4	398.7
	24"		366.7	380.7	394.8	410.8	426.8

Logos and Shapes by Quote

Larger Size Available by Quote

Shipping Costs on Page 14

PRICING INCLUDES:

~ LEDs - Standard 6500k White

(or) 3000k Warm White

~ Class 2 Power Supplies - Meanwell LPV-60-12

~ 10ft 2-wire Power Leads

~ UL Labels



Sales@Artifact-TH.com

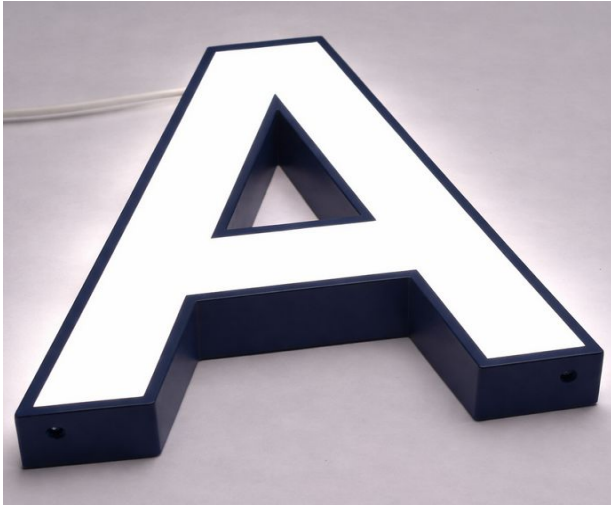
2026 Wholesale Price Catalog

Artifact-Signs.com

FABRICATED FACE-LIT RIBBON

STAINLESS STEEL

Brushed (or) Polished (or) Painted (PG.6)



NOTES:

Lead Time

~ **approx (10-12) working days to ship**

Paper Install Template

~ **INCLUDED** at no extra cost

Lowercase Letters

~ List pricing x 90%

Fractional Sizes

~ Round up to the next largest size

Mounting

~ All prices include stud mounting

TITANIUM FINISHES

~ AVAILABLE BY QUOTE

COLORED VINYL

~ AVAILABLE BY QUOTE

WHOLESALE NET PRICING

Listed in USD - Per Character

		Depth of Letters					
		0.5"	1"	1.5"	2"	2.5"	3"
Largest Dimension of Letter (Height or Width)	1"						
	2"						
	3"						
	4"						
	5"						
	6"				151.6		
	7"				157.9		
	8"				164.5		
	9"				171.4	180.9	190.4
	10"				180.9	191.0	201.1
	11"				190.1	200.7	211.2
	12"				192.1	202.8	213.4
	13"				200.1	211.2	222.3
	14"				212.8	224.6	236.5
	15"				222.8	235.2	247.6
	16"				223.9	236.4	248.9
	17"				235.1	248.2	261.3
	18"				248.7	262.5	276.3
	19"				258.6	273.0	287.4
	20"				270.6	285.6	300.7
	21"				282.2	297.8	313.5
	22"				297.7	314.2	330.8
	23"				314.5	331.9	349.4
	24"				334.7	353.3	372.0

Logos and Shapes by Quote

Larger Size Available by Quote

Shipping Costs on Page 14

PRICING INCLUDES:

- ~ LEDs - Standard 6500k White
- (or) 3000k Warm White,
- ~ Class 2 Power Supplies - Meanwell LPV-60-12
- ~ 10ft 2-wire Power Leads
- ~ UL Labels



Sales@Artifact-TH.com

2026 Wholesale Price Catalog



Artifact-Signs.com

FABRICATED FACE-LIT TRIMLESS

STAINLESS STEEL

Brushed (or) Polished (or) Painted (PG.6)



NOTES:

Lead Time

~ **approx (10-12) working days to ship**

Paper Install Template

~ **INCLUDED** at no extra cost

Lowercase Letters

~ List pricing x 90%

Fractional Sizes

~ Round up to the next largest size

Mounting

~ All prices include stud mounting

TITANIUM FINISHES

~ AVAILABLE BY QUOTE

COLORED VINYL

~ AVAILABLE BY QUOTE

WHOLESALE NET PRICING

Listed in USD - Per Character

		Depth of Letters					
		0.5"	1"	1.5"	2"	2.5"	3"
Largest Dimension of Letter (Height or Width)	1"						
	2"						
	3"				131.0		
	4"				137.7		
	5"				144.3		
	6"				155.9		
	7"				164.7		
	8"				171.4		
	9"				182.0	191.7	201.5
	10"				192.6	203.3	213.9
	11"				202.4	213.7	224.9
	12"				214.3	225.8	237.3
	13"				225.4	237.6	249.8
	14"				238.2	250.8	263.5
	15"				251.5	264.8	278.1
	16"				264.8	279.0	293.2
	17"				277.2	292.0	306.8
	18"				293.2	308.9	324.6
	19"				306.8	323.5	340.1
	20"				322.3	339.4	356.5
	21"				338.7	356.7	374.6
	22"				356.5	375.3	394.1
	23"				375.1	394.1	413.1
	24"				399.8	419.6	439.3

Logos and Shapes by Quote

Larger Size Available by Quote

Shipping Costs on Page 14

PRICING INCLUDES:

- ~ LEDs - Standard 6500k White
(or) 3000k Warm White
- ~ Class 2 Power Supplies - Meanwell LPV-60-12
- ~ 10ft 2-wire Power Leads
- ~ UL Labels



Sales@Artifact-TH.com

2026 Wholesale Price Catalog

Artifact-Signs.com

FIXED SHIPPING COSTS

All orders are are shipped via International Priority.

Orders should be delivered approx 2-5 working days after they ship from our manufacturing facility.

Shipping rates listed are for a single destination.

Items larger than the listed catalog pricing, may be considered oversized and will require custom shipping costs provided via quote.

All final invoices will have the Tracking Number listed on the invoice.

Order Total	Shipping Cost
\$1 to \$1,199	\$90.00
\$1,200 to \$1,599	\$110.00
\$1,600 to \$1,999	\$140.00
\$2,000 to \$3,499	\$200.00
\$3,500 to \$4,999	\$300.00
\$5,000 to \$7,499	\$365.00
over \$7,500	\$390.00

Sales@Artifact-TH.com

2026 Wholesale Price Catalog



Artifact-Signs.com

FAQ's

QUOTES - All pricing provided as a quote is to the best of our understanding given the specifications we can see and how they relate to the closest product we can offer within our standard product lines.

CATALOG PRICING - All pricing provided in our catalog are based on our standard specifications. We encourage you to ask for a custom quote on anything other than the most straight forward projects. All pricing listed is in USD and is subject to change without notice.

PLACING AN ORDER - All order placement must be done in writing via email. You should receive an Order Confirmation within (1) business day of placing your order. If you do not receive an Order Confirmation please contact us immediately as something was likely not received.

ARTWORK - All orders must include full size vector artwork provided by the customer. Artwork can be sent in either .AI or .EPS or .PDF format as long as it is vectored and full size. Please be aware that we do NOT send art proofs on most orders. If you receive an Order Confirmation then your artwork has been accepted and we are proceeding with production based on your exact artwork. We will ONLY send an art proof if something needs to be changed from your originally provided artwork.

LEAD TIMES - All lead times quoted are approximate and do NOT include shipping transit time.

TERMS - All orders will require a 50% deposit to start and the remaining 50% due before shipping. All payments must be made via wire transfer to the account listed on our invoice.

WARRANTY - Artifact Co Signs guarantees all of its products to be free of defects in material and workmanship for a period of 5 years. Should our product contain a defect in material or workmanship, Artifact Co Signs will replace the defective product at no charge. This warranty is limited to the product and quantities found to be defective. All products must be shown to be defective with plenty of high resolution and close up photography. Artifact Co Signs is NOT liable directly or indirectly for any costs of installation, removal, re-installation, damage, loss of use or injury arising out of the use of our product. Before using, purchaser shall determine the suitability of the product for its intended use and the purchaser assumes all risk and liability whatsoever in connection therewith. No other warranty is expressed or implied.



Sales@Artifact-TH.com

2026 Wholesale Price Catalog

ARTIFACT *Signs*

Typical
25%
SAVINGS OVER
INDUSTRY
LEADERS

**MOST ORDERS
SHIP IN
2 WEEKS
OR LESS**

Artifact-Signs.com



2026 Wholesale Price Catalog