

Faith and Works Incorporated M.P.I.E. Youth Empowerment Summer Camp



Faith and Works Inc. Team



Cherice White

Founder / CEO / Program
Director



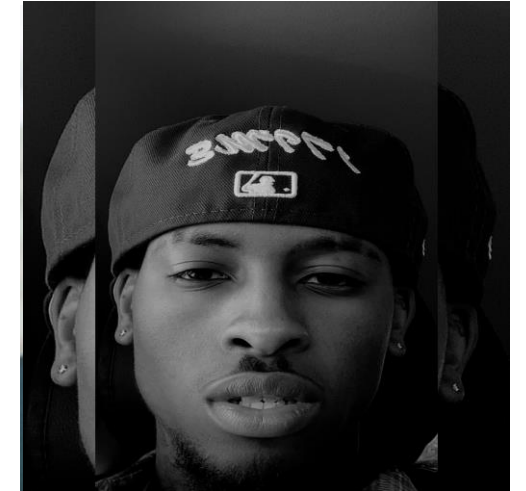
Jasmine Coleman

Project Manager



Monique Jackson

Marketing Director



Taji Adkison

Musical Production Director
/ Assistant

Camp Description and Projected Outcomes

M.P.I.E. Youth Empowerment Summer Camp is a four-week program for ages 9 – 17, that focuses on youth that may be at-risk, and in need of extra guidance and mentoring. The four components are Motivation: Find and Focus on the positive motivations in your life? Participation: Your participation is mandatory to your success in life! Inspiration: Who inspires you and what inspires you in life? Education: You must be educated in and on whatever you do in life to be successful. Art and culture are one of the most dynamic methods and norms that can change human behavior. The M.P.I.E. Youth Empowerment Summer Camp will give youth the ability to increase dialogue and help generate new ideas and relationships that can enhance expression of ideas and positive values. The Arts, structured group activities, and experienced Life Coaching will be utilized for self-discovery and helping youth explore their own identity and expression in creative ways. Youth participants will strengthen their problem-solving skills, autonomy, sense of purpose, and social competence. They will also be encouraged to replace negative emotions with positive emotions, allowing for a victorious mind-set and not a victim's mind-set.



I'm DeMichael!
You're in the Right Place!

M.P.I.E. Youth Empowerment Camp is where real transformation will happen!

At ONEHUNDRED Life Coaching & Consulting we believe coaching isn't about following someone else's path—it's about helping you understand yourself on a deeper level! Remove the barriers holding you back and step fully into your next level!

www.onehundredlifecoaching.com

Camp Schedule and Weekly Outline

Ages 9 - 17 Participant Capacity: (Minimum 25) (Maximum 30)

Program: 8 hours a day- Tuesday -Thursday (3 days per week) Starting July 15th for 4 weeks ending August 7th with a talent show on August 8th at the Mountain View College Campus.

Hours: 9:00am - 5:00pm (additional fee for late pick-ups)

Week One:

- Introductions
- Assess gifts & talents
- **Motivation** Instructional group discussion
- Q & A
- Role playing activities, Character expressions
- Tutoring

Week Two:

- Age designated group activities (drawing, painting, dance, music, vocals)
- **Participation** Instructional group discussion
- Q & A
- Role playing activities, Character expressions
- Tutoring
- Talent determination /rehearsal for talent show

Week Three:

- Age designated group activities (drawing, painting, dance, music, vocals)
- **Inspiration** Instructional group discussion
- Q & A
- Role playing activities, Character expressions
- Tutoring
- Talent show rehearsal

Week Four:

- Age designated group activities (drawing, painting, dance, music, vocals)
- **Education** Instructional group discussion
- Q & A
- Role playing activities, Character expressions
- Tutoring
- Talent show rehearsal
- Talent Show

Camp Daily Activity Timeline

M.P.I.E. Youth Empowerment Camp
Cost: \$150 for each week session
\$20 Non-Refundable Registration Fee

Participants Age Group: 9yrs -17yrs
Participants can sign up for one or more weeks

TUESDAY / WEDNESDAY / THURSDAY

- 9:00am-9:30am Breakfast
- 9:30am-11:30am Instructional Group Discussion
- 11:30am-12:30pm Q & A
- 12:30pm- 1:00pm Lunch
- 1:15pm-2:15pm (Ages 9-13) Arts & Craft Activities
- 1:15pm-2:15pm (Ages 13-17) Music & Vocal Activities
- 2:30pm-3:30pm (Ages 9-13) Role playing/Character expressions
- 2:30pm-3:30pm (Ages 13-17) Role playing/Character expressions
- **PARTICIPANTS CHOICE**
- 3:30pm-4:30pm (4th – 6th grade) Math Tutoring
- 3:30pm-4:30pm (All ages) Talent Show Practice
- 3:30pm-4:30pm (All Ages) Structured Games
- 4:30pm-5:00pm Snack & Dismissal

25 Minimum
30 Maximum

SUMMARY

We believe that Faith and Works Incorporated mission and focus on healing and cultural awareness is what sets us apart from our competitors. We understand that aside from the beauty of the arts, the arts bridge gaps across socio-economic and cultural lines. We use the arts as a catalyst to reach young people and their communities to create a positive atmosphere for growth and change. M.P.I.E. Youth Empowerment Summer Camp Program will require our instructors to listening to our participants and allowing their life experiences and needs to guide the program. We have found that this level of engagement will give them a deeper sense of purpose and involvement.















Thank you



Cherice White

Founder / CEO

Faith and Works Incorporated

chericewhite@faithandworksinc.org

c.white@att.net

www.faithandworksinc.org

(469) 285-6203