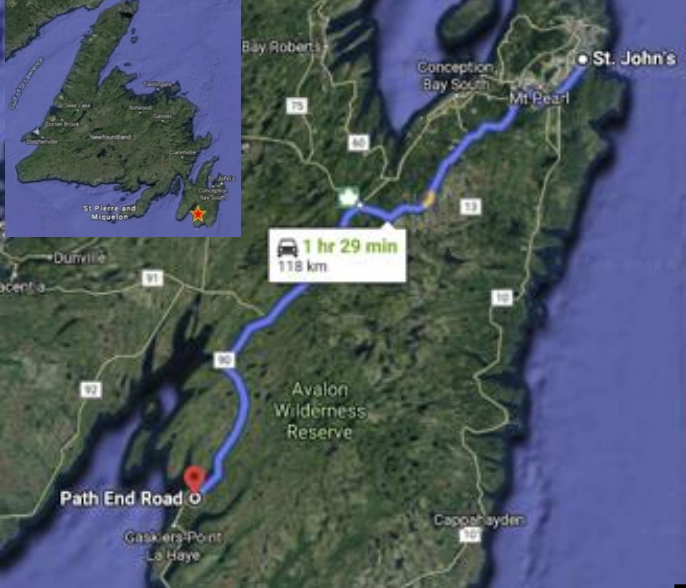




Lot – B – Holyrood Pond



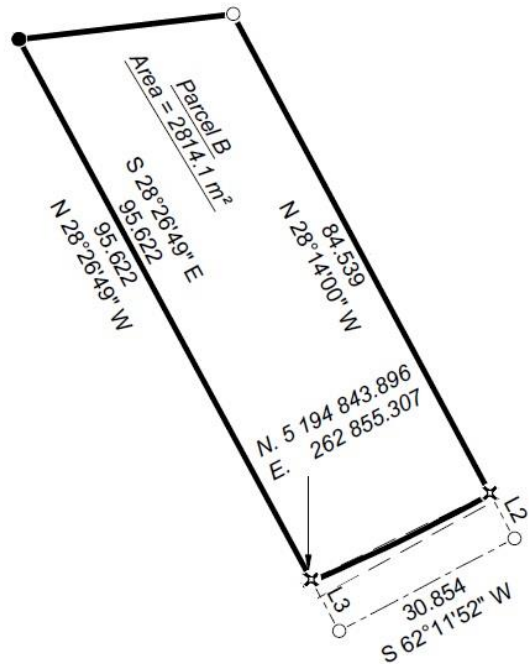
This lot is approx. 2814.1 sqm (0.69 acre). Path End is ideally located just 118 km from St. John's in St Mary's Newfoundland at the end of Path End Road. It is situated along the shores of Holyrood Pond, making it the perfect get away.

Whether you are considering a home or cabin, or a relaxing work location, this may be what you are looking for.

You can launch your boat or water sports toy from the beach. You will never get tired of the panoramic views of Holyrood pond!

Essential amenities nearby include, grocery store, liquor express, fueling stations, school, pharmacy & clinic, pub & restaurant as well as a post office.

Nearby points of interest include the iconic St. Vincent's Beach where you're sure to see whales and from there you are just a 40-minute drive to the Mistaken Point, a UNESCO site.



Interested? Contact us today!

Pathend@pathend.ca