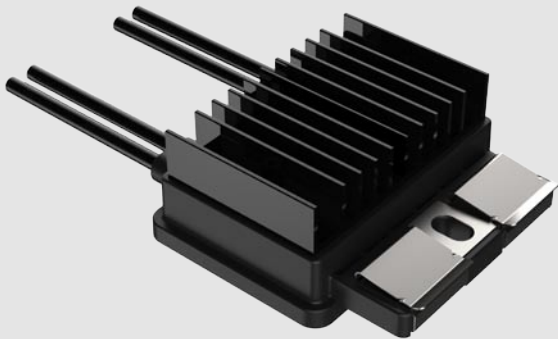




ENTELEGENT



Entelligent NMax RSD with Optimization



Entelligent NMax M900A1
Single Input



Entelligent NMax M900A2
Dual Input

- 2017 NEC 690.12 and 2020 NEC 690.12 Rapid Shutdown Compliant
- SunSpec™ Rapid Shutdown Certified
- Safest in the industry with unique health condition monitoring self-diagnostic, continuously validating safety shutdown functionality
- Single and dual input versions can support two PV panels, each up to 450W, providing cost and labor savings on installation
- Quick connects to PV panel module junction box outputs
- Compatible with industry-leading third-party PV string inverters
- Unique maximum power point tracking (MPPT) optimization circuitry provides up to 44% more electricity to the inverter than competitors

Entelligent NMax RSD with Optimization

Product Specifications

Model Number	M900A1	M900A2
Number of Inputs	Single Input	Dual Input
Electrical		
Maximum Input Voltage	80 V	80 V per channel
Maximum Output Voltage	80 V	160 V
Maximum Current	12.5 A	12.5 A
Maximum Power	900 W	900 W (450W per channel)
Maximum Power Consumption	1.8 W	0.9 W per channel
Mechanical		
Operating Ambient Temp Range	-40°C to +85°C	-40°C to +85°C
Dimensions (without cable)	112 x 118 x 46 mm	112 x 130 x 41 mm
Weight	700g	750g
Cable Length	Input Cable Length: 0.12m Output Cable Length: 1m	Input 1 Cable Length: 0.12m Input 2 Cable Length: 0.24m Output Cable Length: 1.2m
Cable	12AWG	12AWG
Enclosure Rating	NEMA Type 6P / IP 68	NEMA Type 6P / IP 68
Features & Compliance		
Power Optimization	Yes (MPPT)	Yes (MPPT)
Communication	PLC	PLC
Safety Compliance	NEC 2017 (690.12) NEC 2020 (690.12)	NEC 2017 (690.12) NEC 2020 (690.12)
EMC Compliance	UL 1741 CSA C22.2 No. 107.1	UL 1741 CSA C22.2 No. 107.1
Others	FCC Part 15 Class B IE C 61000-6-2 IE C 61000-6-3 SunSpec™ RSD Certified Over temperature protection	FCC Part 15 Class B IE C 61000-6-2 IE C 61000-6-3 SunSpec™ RSD Certified Over temperature protection
Model Number by Connector Type		
BizLink S418 (MC4 Compatible)	M900A1-S4	M900A2-S4
Staubli MC4	M900A1-M4	M900A2-M4