



# Local Life **Japan**

ローカルライフ言語学院

Learn the Language  
**Live the Culture**  
Feel like a Local

# 明石

## PUBLIC TRANSPORT



BUS



TRAIN



FERRY

## LIVING EXPENSES



COFFEE  
¥250



LUNCH  
¥700



BIG MAC  
¥480

## DAY TRIPS DESTINATIONS

KOBE

**12**  
mins

AWAJI

**13**  
mins

OSAKA

**38**  
mins

KYOTO

**69**  
mins

### Welcome to Akashi: Japan's Hidden Gem by the Sea

Akashi is where history, culture, and nature come together effortlessly. A seaside city offering an authentic Japanese experience away from tourist crowds, Akashi blends historical charm, local vibrancy, and breathtaking coastal views.

Whether you're dreaming of quiet mornings by the ocean, lively afternoons exploring local markets, or meaningful connections with friendly locals, Akashi isn't just a destination—it's a home away from home.



# 学校 OUR SCHOOL

Just 2 minutes from Akashi Station and from Akashi Castle Park, our school is perfectly placed for both convenience and inspiration. With small, focused classes, a warm family-like atmosphere, and an experience tailored for growth and connection, every day here is an opportunity to live, learn, and truly experience Japan.



## GREAT TEACHERS

Our native Japanese instructors receive 400+ hours training to ensure top-quality teaching.



## SMALL CLASS SIZE

With an average of five students per class and a maximum of nine.



## HANDS-ON WORKSHOP

Immerse in Japanese traditions through engaging workshops led by local experts.



## LOCAL INTERACTION

Build genuine connections with locals and experience Japan beyond the classroom.



## START ANY MONDAY

Personalise your learning journey to fit your schedule. Start any Monday and study for 1 to 50 weeks.



## COOL JAPAN: SUBCULTURE

Explore Japan's vibrant subculture, including anime, fashion, and music, guided by passionate experts.

## COURSES AVAILABLE

### CONVERSATION COURSE

#### Japanese

- Part-Time - 15h / week

#### Japanese + Culture

- Full-Time - 25h/ week

### SPECIAL PROGRAMS

#### Teen Holiday Program

- 30h / week

#### JLPT Preparation

- 15h / week

### OTHER COURSES

- Japanese 1:1 Lessons
- English 1:1 Lessons
- General English
- Cambridge English

## FACILITIES

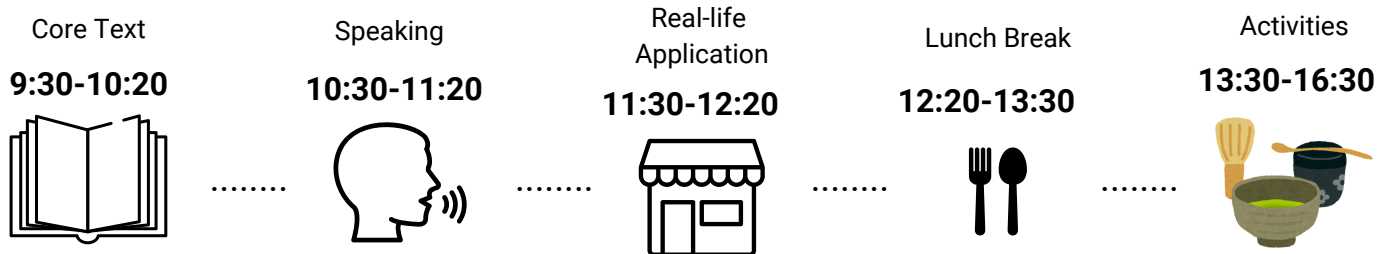
- Air-conditioned Classrooms
- Student Lounge
- TV & Games
- Free Wi-Fi
- Kitchenette
- Tea & Coffee
- Study Materials
- Japanese High-Tech Toilets

## ACCESSIBILITY

- 1 min** CAFE/ RESTAURANT/ MARKET AREA  
CONVENIENCE STORE / SUPERMARKET
- 2 min** TRAIN STATION / SHOPPING MALLS  
HISTORIC PARK / LIBRARIES / PHARMACY
- 10 min** HARBOUR AREA / MUSEUM / ART  
GALLERIES / SPORTS FACILITIES /  
CYCLING TRAILS



## EXAMPLE TIMETABLE



\*Friday afternoons are dedicated to personal exploration and relaxation, giving you the freedom to unwind and fully enjoy your time in Japan.

## YOUR JOURNEY, YOUR WAY

At Local Life Japan, we know every student comes with unique goals, plans, and needs. Our **Student Support** offers personalised care and guidance, ensuring your experience is tailored, enriching, and unforgettable.

*"It is rare to find a program with this level of personal care and dedication. 100% recommended for anyone looking for an authentic, welcoming Japanese experience!" - Sue, New Zealand*



# 授業

# LESSON

Japan comes alive when you can speak the language. With this course, you'll be actively using Japanese every day from the start. No matter how long you study with us, our uniquely tailored teaching approach ensures your Japanese skills improve in a way that's both effective and practical for real-life situations.

## LEVELS

Beginner - Intermediate  
A0 - B1

## START

Any Monday

## DURATION

2-12 Weeks

For stays shorter than 2 weeks or longer than 12 weeks, please contact us on [info@local-life-japan.com](mailto:info@local-life-japan.com) – we'd love to help you create the perfect plan!

## Communicative & Practical



Learn Japanese through engaging lessons designed for practical, everyday communication.



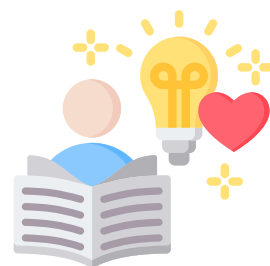
## Intuitive & Effective



Designed specifically for European language speakers, our programs focus on your needs with a learner-centred approach.

## WHY STUDY WITH US?

- **Speak from Day One:** Practical, real-life Japanese you can use immediately.
- **Small Classes, Big Impact:** Engaging lessons with personalised attention.
- **All-in-one Learning:** Build speaking, listening, reading and writing skills.
- **Fast Progress:** Start speaking confidently in just one week.
- **Beyond the Classroom:** Take your skills into the real world.
- **Your Goals, Our Focus:** Academic support tailored to your journey.



*"The classes are designed for you to speak more Japanese thus building your overall speaking ability which I found it very useful." -- WenWei, Singapore*



# 成長 PROGRESS

At Local Life Japan, you can start your journey **any Monday**—it's all about flexibility. Our rolling start system ensures you'll join the class level that matches your ability from day one, so you'll feel confident and ready to grow.

## Placement Process

1. Before your arrival, you'll take a short placement test and a brief video call with a teacher so we can learn about your goals and current Japanese level.
2. On your first day, our experienced Japanese teacher will confirm your level through a brief follow-up session. If you'd prefer to move to a different class, simply let us know by the end of the day.



## WHAT YOU CAN ACHIEVE IN..

### 2 WEEKS

Learn survival phrases

### 4 WEEKS

Hold short conversations

### 12 WEEKS

Navigate life in Japanese

### 24 WEEKS

Confident communication

### 50 WEEKS

Navigate life with confidence.

CEFR  
JLPT

A0  
-

A1  
N5

A2  
N4

B1  
N3

B2  
N2

"A fantastic Japanese language & cultural school. Although I have been to Japan for many times, the two weeks I spent here was definitely among my most wonderful experiences." - Chenyi, China





# 活動 **ACTIVITY**



At Local Life Japan, we believe that true learning goes beyond the classroom. Our carefully curated cultural and social activities are designed to immerse you in the heart of Japanese life, allowing you to experience the traditions, connect with the locals, and build unforgettable memories.



## SAMPLE ACTIVITY SCHEDULE

Samurai Ship Cruise	Japanese Festival	Tea Ceremony	Calligraphy
Traditional Craft	Fruit Picking	Yukata Elegance	Sushi Workshop



## EXPLORE. CONNECT. BELONG.

We work closely with Akashi City, local schools and organisations to offer vibrant and enriching experiences. From attending local festivals to participating traditional rituals, every moment is an opportunity to dive deeper into the essence of authentic Japanese culture.

# EXTRA ACTIVITIES

Enjoy a full program of social events and activities, ensuring your free time is just as exciting as your study time! Here are some highlights:



## OUTINGS:

On select weekends and evenings, we organise excursions to local festivals, events, and attractions. Activities include game night, mochi-making with local farmers, local university tour, local school visits, factory tour and pub crawls.

### MAKING MOCHI WITH LOCALS



### GAME NIGHT WITH LOCALS



### LOCAL COSPLAY EVENT:



## BEACH CLEANING:

Join Akashi City's “ウミガメプロジェクト” to help preserve sea turtles. Participate in meaningful beach cleaning activities while learning about marine conservation and supporting local wildlife efforts.



*“The cultural activities were also amazing! There were loads of fun adventures, from Zen meditation to tea ceremonies to bowling. My personal favorite was probably our visit to Himeji Castle, which was both scenic and loaded with fascinating historical and architectural knowledge.” - Liam, United States*



# 宿泊 HOMESTAY



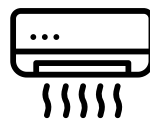
Experience true cultural immersion by staying with one of our carefully chosen Japanese host families, who are enthusiastic about sharing their traditions and making you feel at home. A homestay is the perfect opportunity to practice what you learn in class and deepen your connection to the local culture.

We take your preferences and needs into account to ensure your host family is the right fit for you. Many students find that their host family becomes their closest connection in Japan, creating lifelong bonds. Our thorough selection process ensures each family provides a welcoming, supportive environment for your stay.



## Best Match for You

Families are chosen based on personality, life-style, hobbies and interests.



## Comfortable and Homely

Private room with air conditioning to ensure a comfortable stay.



## Home-cooked Meals

Families provide daily home-cooked breakfast and dinner everyday.



## 360 Support Provided

Comprehensive support with post-arrival orientation and a 24-hour hotline.

*"What a lovely family I had! They were so helpful and showed me so much about daily Japanese life! We always had breakfast and dinner together." -- Silvia, Austria*

青春

TEEN PROGRAM

Join our boutique Japanese immersion program for teens in Akashi — a charming seaside cit known as the gateway to Japan’s authentic daily life.

Here, you won’t just visit Japan, you’ll live it.

PACKAGE INCLUDES

- Japanese lessons
- Daily Activities
- Homestay with a Local Family
- Breakfast & Dinner everyday
- Events with Local Students
- Books and Materials
- 24/7 Emergency Hotline
- Airport Transfer

LEVEL	Beginner - Intermediate
START	Any Monday
DATES	Jun 29 - Sep 4 2026
	Jan 4 - Feb 5 2027

\*Complete beginner start dates:  
Jun 29, Aug 3, Jan 4



ALL INCLUSIVE  
FULL IMMERSION



TIMETABLE  
Monday to Friday



9:30-12:30	Japanese Lesson
12:30-13:30	Lunch
13:30-16:30	Social-Cultural Activity



Learn Japanese in small, friendly classes. Connect with locals. Live with a welcoming Japanese family. And explore Japan’s vibrant traditions through hands-on cultural activities.



# Welcome to Hyogo: Japan's Crossroads of Tradition and Modernity

## Himeji Castle - The Crown Jewel of Japan

Built in 1609, step into a perfectly preserved samurai castle with over 400 years of history. Japan's most majestic and flawlessly maintained castle and a UNESCO World Heritage Site.



## Arima Onsen - Japan's Timeless Mountain Retreat

One of Japan's oldest and most famous hot spring towns, Arima Onsen is nestled in the mountains, cherished for over 1,000 years. Don't miss Arima Kago, a traditional bamboo handicraft shop dating back to the 15th century.

## HYOGO MUST VISITS

## Nada Sake District - The Heart of Japanese Sake

Home to Japan's finest sake breweries, Nada Sake District produces one-third of the world's sake. Known for its pure spring water and ideal brewing climate, this historic district is a must-visit for sake enthusiasts and cultural explorers alike.



## Awaji Island - The Birthplace of Japanese Mythology

Known as Japan's mythical first island, Awaji Island is celebrated for its stunning coastal scenery, rich agriculture, and vibrant cultural heritage. A perfect getaway offering fresh fruits and seafood, tranquil landscapes, and a glimpse into ancient legends.

Connecting Akashi to Awaji Island, the Akashi Kaikyo Bridge is the world's longest suspension bridge. Stretching 3,911 metres, it's an engineering marvel offering breathtaking views of the Seto Inland Sea.



Akashi City , Hyogo Prefecture  
兵庫県明石市



[local-life-japan.com](http://local-life-japan.com)



[local\\_life\\_japan](https://www.instagram.com/local_life_japan)



[info@local-life-japan.com](mailto:info@local-life-japan.com)



+81 78 962 7080



**Japan.** Endless Discovery.



8F Shiragiku Grand Bldg,  
1-7-4 Oakashi-cho, Akashi,  
Hyogo, Japan 673- 0891



**Local Life Japan**  
ローカルライフ言語学院



**Want to learn more?**  
**Book a free consultation today!**