



LOCAL LIFE JAPAN

ローカルライフ言語学院

Japanese

+

Activity

+

Homestay

+

Breakfast and dinner

Join our boutique Japanese + Culture + Homestay program - a truly immersive experience set in Akashi, a welcoming seaside city that offers the perfect balance of tradition, community, and everyday Japan.

Here, you won't just study Japanese - you'll live it.



**All Inclusive
Real Immersion**



Learn in small, friendly classes, experience authentic cultural activities four times a week, and share daily life with a carefully matched Japanese host family.

With 2.5-day weekends, you'll have plenty of time to explore on your own, hang out with locals, or enjoy quality time with your host family - the perfect blend of structured learning and personal adventure.



**Live the Language
Love the Journey**



Your Immersive Japanese Experience

At Local Life Japan, your days are shaped by three essentials:

1



3 HOURS OF JAPANESE LESSONS PER DAY

Small, friendly classes (max 9 students) mean you'll always have space to practice actively, join in conversations and receive personalised feedback.

Lessons are practical and focused on real-life application — going beyond textbook grammar to the Japanese you'll actually use to connect with people in daily life.

2

4 LOCAL-LED ACTIVITIES PER WEEK

Four afternoons a week, you'll step out of the classroom and into the community.

From tea ceremony and calligraphy to guided neighbourhood walks and market visits, every activity is led by locals who love sharing their culture.

It's not just about seeing Japan - it's about experiencing it, and having real conversations while you do.



3

Homestay with Daily Breakfast & Dinner

Live with a carefully matched local host family, share meals together, and become part of their daily routine.

It's the most natural way to practise your Japanese and learn about life here - from seasonal traditions to everyday habits.

We'll match you based on your preferences, so you feel comfortable and welcomed from day one.



Together, they give you the language, context, and community to truly feel at home in Japan.

Japanese Culture Activities

Please note: Cultural activities may occasionally be changed or replaced due to weather or other unforeseen circumstances. If this happens, we'll arrange an alternative activity of equal value and interest.

Japanese Garden



Samurai Experience



Aizome Indigo Dyeing



Japanese Shrine Tour



Wadaiko Drum Lesson



Fruit Picking



UNESCO Castle Tour



Wagashi Workshop



Mochi Making



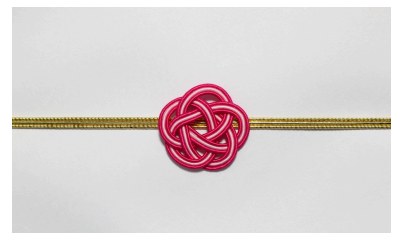
Akashiyaki / Takoyaki



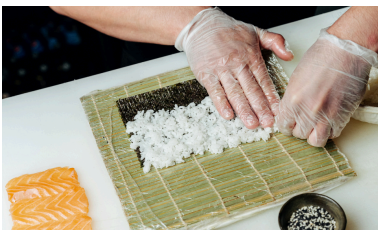
Tea Ceremony



Mizuhiki Workshop



Sushi Making



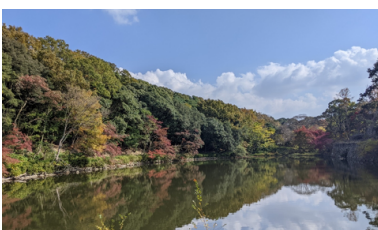
Calligraphy Lessons



Aquarium Art Museum



Akashi Castle Park Walk



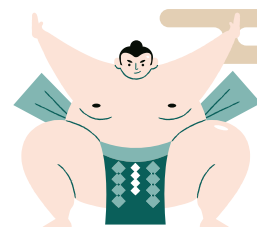
Uo-no-tana Tour



Temple Zen Meditation



Start Dates	Levels	School Holidays
Every Monday	A0 - B1	20 Dec 2025 4 Jan 2026



*Our school stays open on public holidays to ensure every student enjoys a full 5-day experience.



Timetable

Monday to Friday

9:30 - 12:20 Japanese Lesson

13:30 - 16:20 Activity

*Friday is a half-day, giving you 2.5 days each weekend for personal exploration



PACKAGE INCLUDES...



- Japanese lessons
- Daily activities
- Homestay with a local family
- Breakfast & dinner every day
- Events with locals
- Books & learning materials
- 24/7 emergency hotline
- Local student care

Price

2 weeks package ¥ 226,600

Additional week(s)

+ ¥89,800 pw

Return Student
Discount

¥ 22,000 OFF

*All fees are in Japanese Yen
*All fees include 10% GST

HOMESTAY



*Please plan to check-in by 6pm and checkout by 12pm.

*Move-in Sunday / move-out Saturday. Extra night ¥ 7,500

*Travel time approx 15-60 min by public transport, depending on personal preference and availability.

*Each family are carefully interviewed and selected, and we match based on students' preferences and interests.



For more details, please contact us at info@local-life-japan.com