



Drawing Title Earth Wind and Fire LX for Quoting	
Designer Jef Benjamin	Programmer / Op J Bradley
Drawn By PS	Scale various
Venue Various	Contact Info Jef Benjamin 253-278-7188 Olallapro@gmail.com
Date 5/21/2021	
CAD File Name EWf 21'	

Vendor shall also provide- 10% Spares for all fixtures.

1 GMA2 Full size 1 GMA2 Lite (both active) 1 GMA2 Lite (back up) 1 touch screen monitor and 1 lep 6-12 or smaller console for triggering All Rigging, Cabling, Dimming, Distro, and networking required.

This includes Fiber Snake With HDMI ins and Outs on both ends and a Professional Video Switcher capable of scaling the images.

3 dmx WATER based hazers, Spot colors (4 spots) 1-R05 2-1/2 cto 3-R57 9 Quality belt packs and head sets 1 main station. 2@FOH 1 SL for Stage Manager 1@ dimmers 1@house lights 4@ spots ALL must be double muff except 1 single muff at FOH. All XLR 3pin needed to wire all positions.

All lekos are gelled with R3206

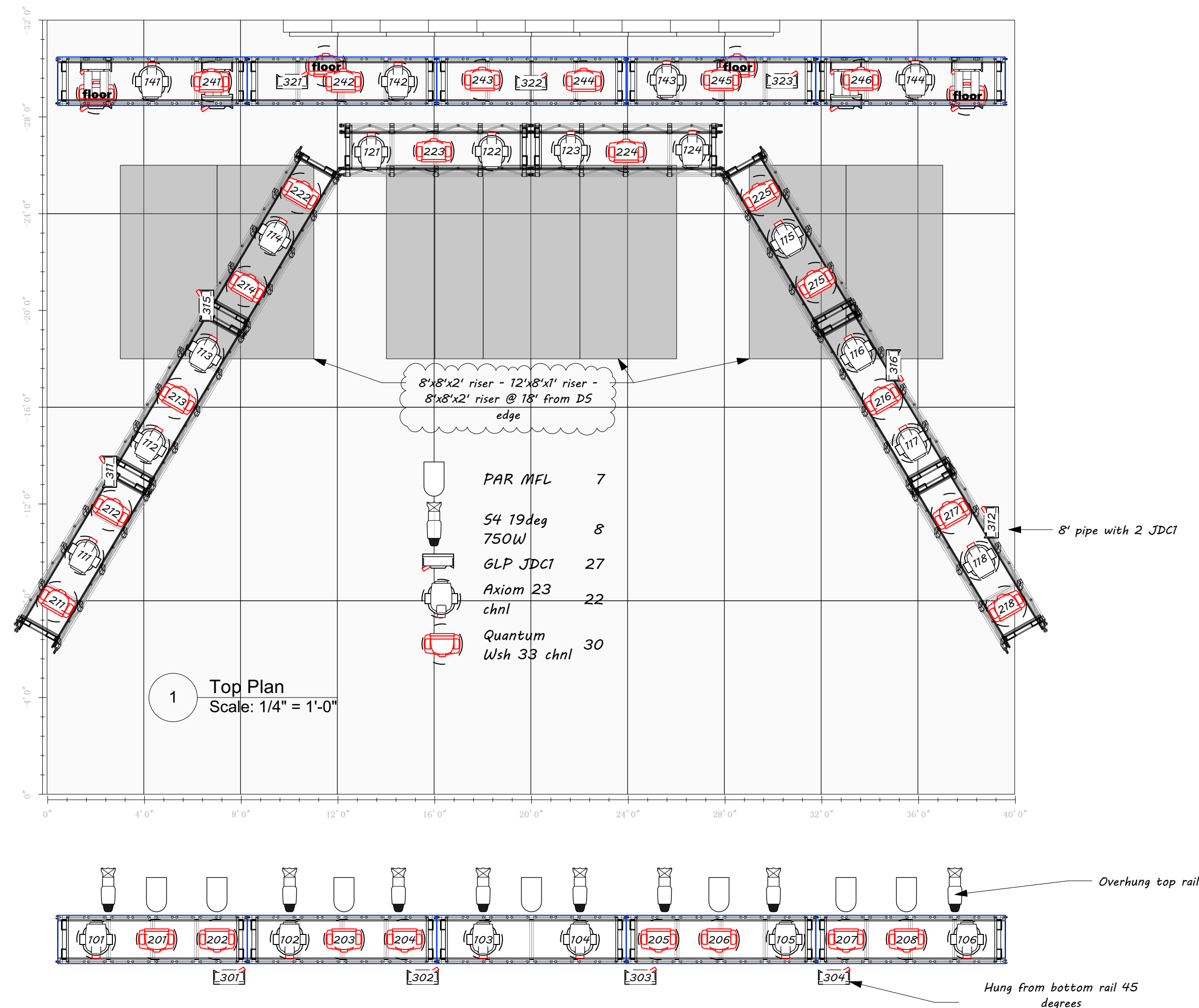
be sure to have 350' of snake, 150' of feeder.

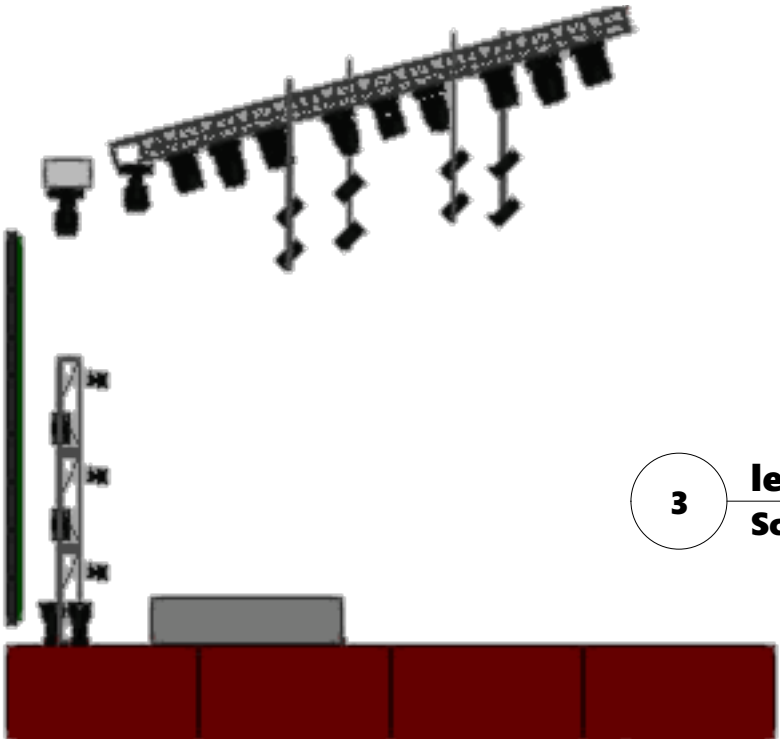
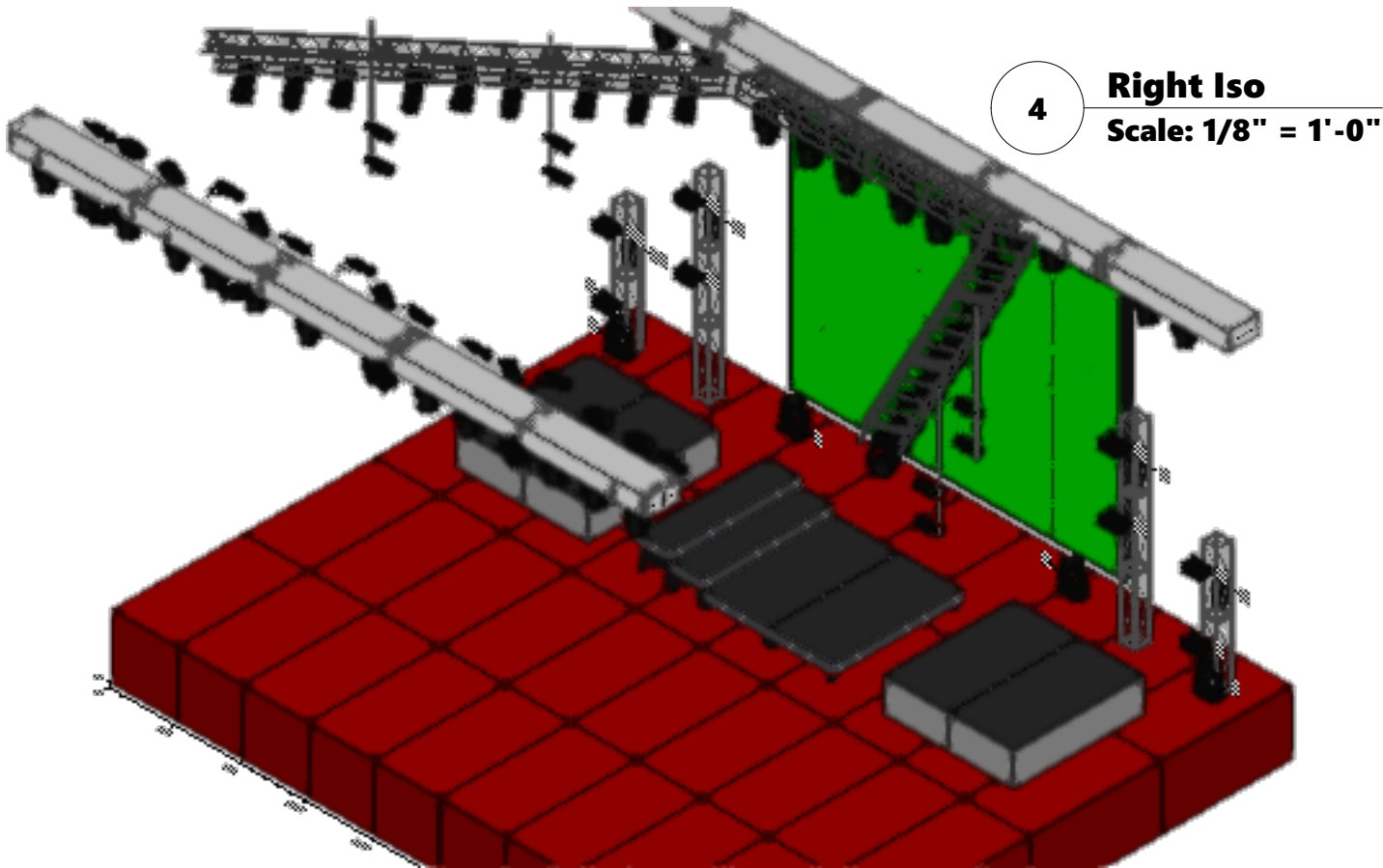
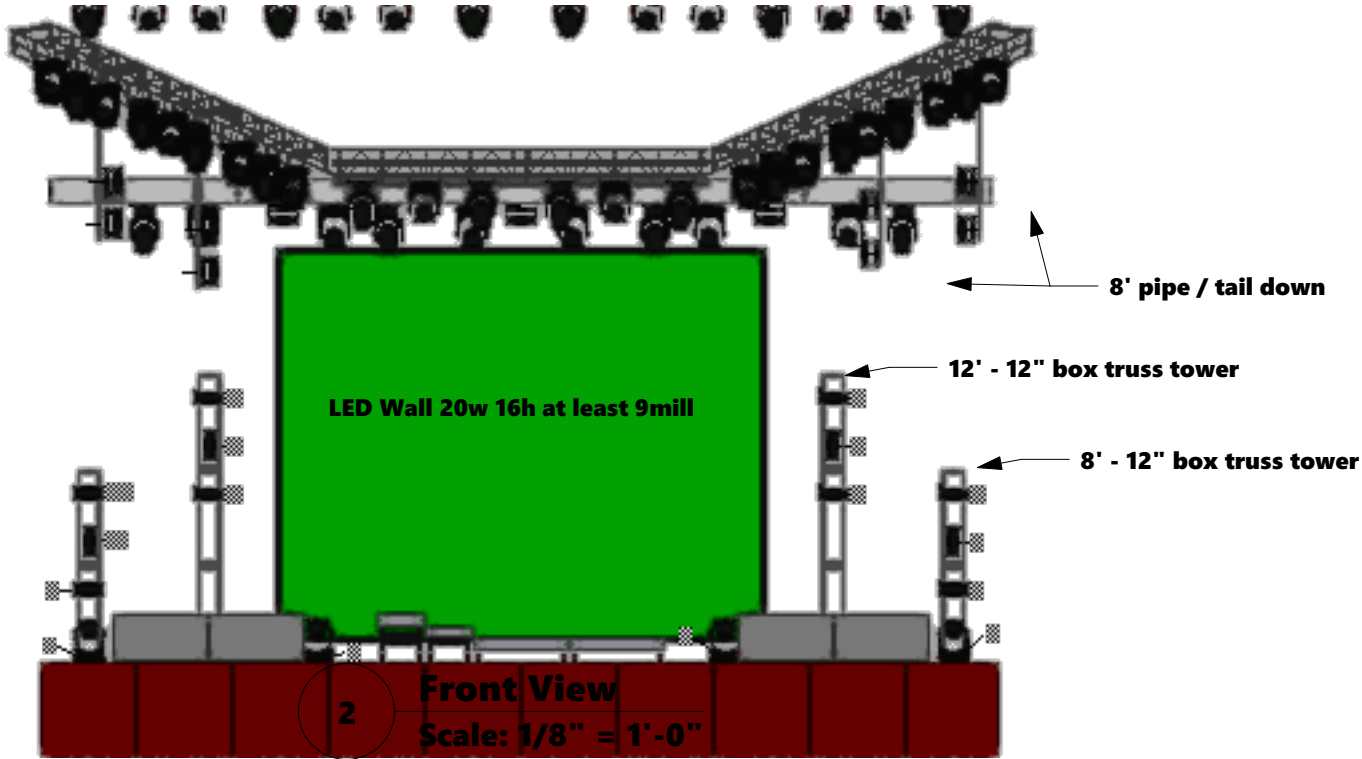
All Safety and Access Gear required for this job.


Questions? Contact Jef Benjamin
+1-253-278-7188 Olallapro@gmail.com

THIS DRAWING REPRESENTS DESIGN CONCEPTS AND CONSTRUCTION SUGGESTIONS ONLY. THE DESIGNER IS UNQUALIFIED TO DETERMINE THE STRUCTURAL, MECHANICAL OR ELECTRICAL APPROPRIATENESS OF THIS DESIGN AND WILL NOT BE HELD RESPONSIBLE FOR ITS USE. ALL RIGGING SHOULD BE EVALUATED AND APPROVED BY A STRUCTURAL ENGINEER PRIOR TO CONSTRUCTION. ALL EQUIPMENT, AND INSTALLATION OF SAID EQUIPMENT MUST COMPLY WITH THE MOST STRINGENT APPLICABLE SAFETY AND FIRE CODES.

THIS DRAWING AND ALL OF THE IDEAS, ARRANGEMENTS, DESIGNS AND PLANS INDICATED THEREON OR REPRESENTED THEREBY ARE OWNED BY AND REMAIN THE PROPERTY OF OLALLA PRODUCTION SOLUTIONS, AND HAVE BEEN CREATED AND DEVELOPED FOR USE ON AND IN CONNECTION WITH THE SPECIFIED PROJECT. NEITHER THIS DRAWING NOR ANY OF SUCH IDEAS, ARRANGEMENTS, DESIGNS OR PLANS SHALL BE APPROPRIATED BY OR DISCLOSED TO ANY PERSON, FIRM OR CORPORATION FOR ANY USE OR PURPOSE WHATSOEVER, EXCEPT BY THE SPECIFIC AND WRITTEN PERMISSION OF OLALLA PRODUCTION SOLUTIONS.





Drawing Title <i>Earth Wind and Fire</i> <i>LX for Quoting</i>	
Designer <i>Jef Benjamin</i>	Programmer / Op <i>J Bradley</i>
Drawn By 	Scale <i>various</i>
Venue <i>Various</i>	Contact Info <i>Jef Benjamin</i> <i>253-278-7188</i> <i>Olallapro@gmail.com</i>
Date <i>5/21/2021</i>	
CAD File Name <i>EWf 21'</i>	

THIS DRAWING REPRESENTS DESIGN CONCEPTS AND CONSTRUCTION SUGGESTIONS ONLY. THE DESIGNER IS UNQUALIFIED TO DETERMINE THE STRUCTURAL, MECHANICAL, OR ELECTRICAL APPROPRIATENESS OF THIS DESIGN AND WILL NOT BE HELD RESPONSIBLE FOR ITS USE. ALL RIGGING SHOULD BE EVALUATED AND APPROVED BY A STRUCTURAL ENGINEER PRIOR TO CONSTRUCTION. ALL EQUIPMENT, AND INSTALLATION OF SAID EQUIPMENT MUST COMPLY WITH THE MOST STRINGENT APPLICABLE SAFETY AND FIRE CODES.

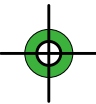
THIS DRAWING AND ALL OF THE IDEAS, ARRANGEMENTS, DESIGNS AND PLANS INDICATED THEREON OR REPRESENTED THEREBY ARE OWNED BY AND REMAIN THE PROPERTY OF OLALLA PRODUCTION SOLUTIONS, AND HAVE BEEN CREATED AND DEVELOPED FOR USE ON AND IN CONNECTION WITH THE SPECIFIED PROJECT. NEITHER THIS DRAWING NOR ANY OF SUCH IDEAS, ARRANGEMENTS, DESIGNS OR PLANS SHALL BE APPROPRIATED BY OR DISCLOSED TO ANY PERSON, FIRM OR CORPORATION FOR ANY USE OR PURPOSE WHATSOEVER, EXCEPT BY THE SPECIFIC AND WRITTEN PERMISSION OF OLALLA PRODUCTION SOLUTIONS.



Drawing Title		Earth Wind and Fire LX for Quoting	
Designer	Jef Benjamin	Programmer / Op	J Bradley
Drawn By	GPS	Scale	various
Venue	Various	Contact Info Jef Benjamin 253-278-7188 Olallapro@gmail.com	
Date	5/21/2021		
CAD File Name	EWf 21'		



Hoist 1 Ton Video Down



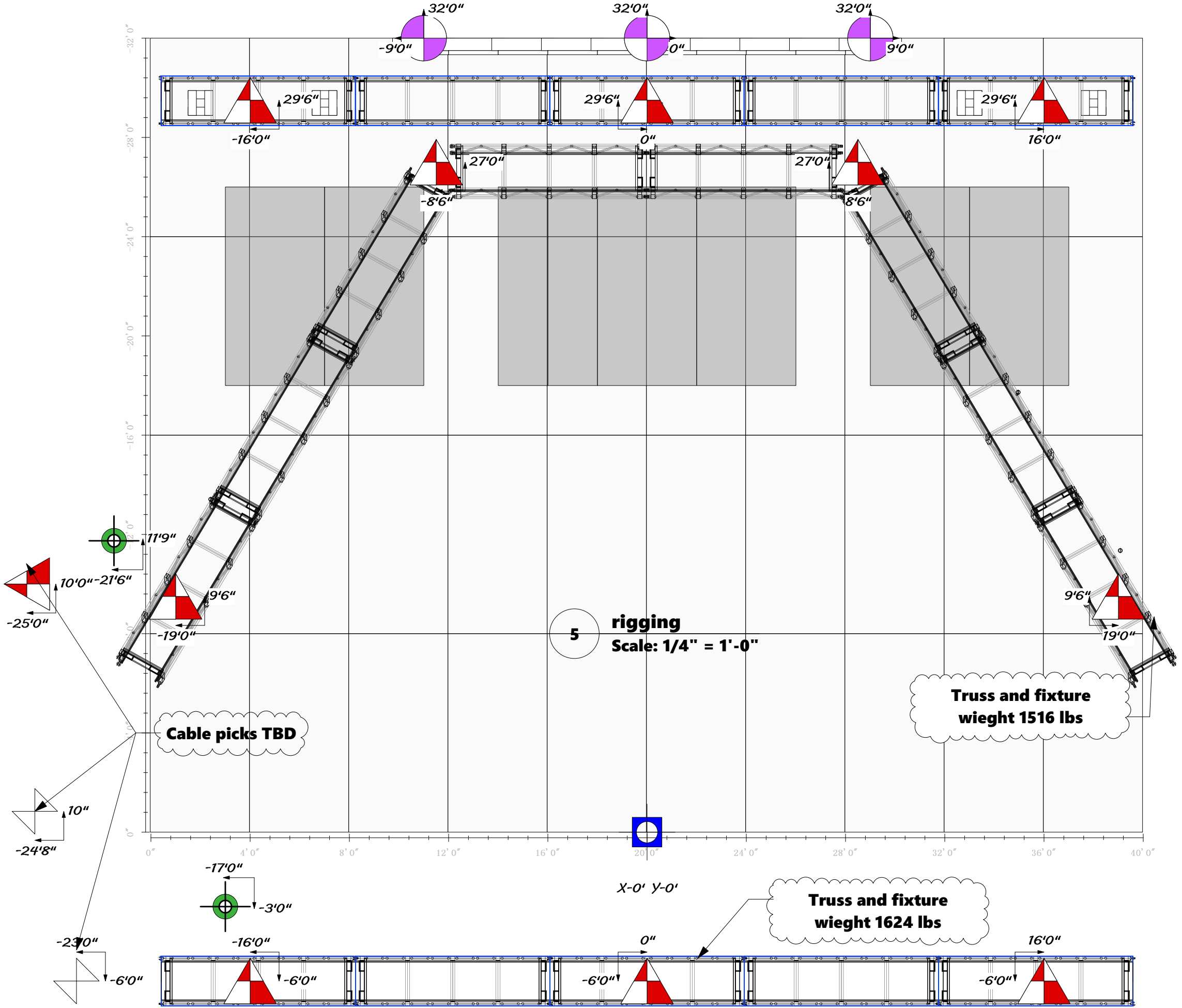
Vertical Fall Arrest



Hoist 1/2 Ton Lights Down



Hoist 1/2 Ton Cable Pick Down



THIS DRAWING REPRESENTS DESIGN CONCEPTS AND CONSTRUCTION SUGGESTIONS ONLY. THE DESIGNER IS UNQUALIFIED TO DETERMINE THE STRUCTURAL, MECHANICAL OR ELECTRICAL APPROPRIATENESS OF THIS DESIGN AND WILL NOT BE HELD RESPONSIBLE FOR ITS USE. ALL RIGGING SHOULD BE EVALUATED AND APPROVED BY A STRUCTURAL ENGINEER PRIOR TO CONSTRUCTION. ALL EQUIPMENT, AND INSTALLATION OF SAID EQUIPMENT MUST COMPLY WITH THE MOST STRINGENT APPLICABLE SAFETY AND FIRE CODES.

THIS DRAWING AND ALL OF THE IDEAS, ARRANGEMENTS, DESIGNS AND PLANS INDICATED THEREON OR REPRESENTED THEREBY ARE OWNED BY AND REMAIN THE PROPERTY OF OLALLA PRODUCTION SOLUTIONS, AND HAVE BEEN CREATED AND DEVELOPED FOR USE ON AND IN CONNECTION WITH THE SPECIFIED PROJECT. NEITHER THIS DRAWING NOR ANY OF SUCH IDEAS, ARRANGEMENTS, DESIGNS OR PLANS SHALL BE APPROPRIATED BY OR DISCLOSED TO ANY PERSON, FIRM OR CORPORATION FOR ANY USE OR PURPOSE WHATSOEVER, EXCEPT BY THE SPECIFIC AND WRITTEN PERMISSION OF OLALLA PRODUCTION SOLUTIONS.