



**AL AMAN
COMPANY**

VISION رؤية
2030
المملكة العربية السعودية
KINGDOM OF SAUDI ARABIA

COMPANY

PROFILE



FIELD OF
ACTIVITY



**ENERGY
DIVISION**

Power Plants

- HFO/Diesel/Medium Speed
- Diesel/High Speed

Energy Centers

- Power + Chilled Water
- CHP (Tri-Gen. & Co-Gen.)
- BOO & BOOT

Rental BOO

Solar Hybrid (Ongoing)



**MEP
DIVISION**

HVAC & Refrigeration

Firefighting

Plumbing



**INDUSTRIAL
DIVISION**

Soundproof Enclosures + Tanks

Ducts

Switchgear

Smart Meters (Ongoing)



KEY
PROJECTS
& ENGINEERING WORKS



Headquarters Business Park

Location: Jeddah Corniche
Date: 2013





HEADQUARTERS BUSINESS PARK



BOOT Contract: 25 Years
Contract Value: 300 Million SAR



First project to apply **Tri-Generation** in Saudi Arabia.

- ↪ Energy & cost saving through heat recovery.
- ↪ Increases energy efficiency from <40% to 80%.

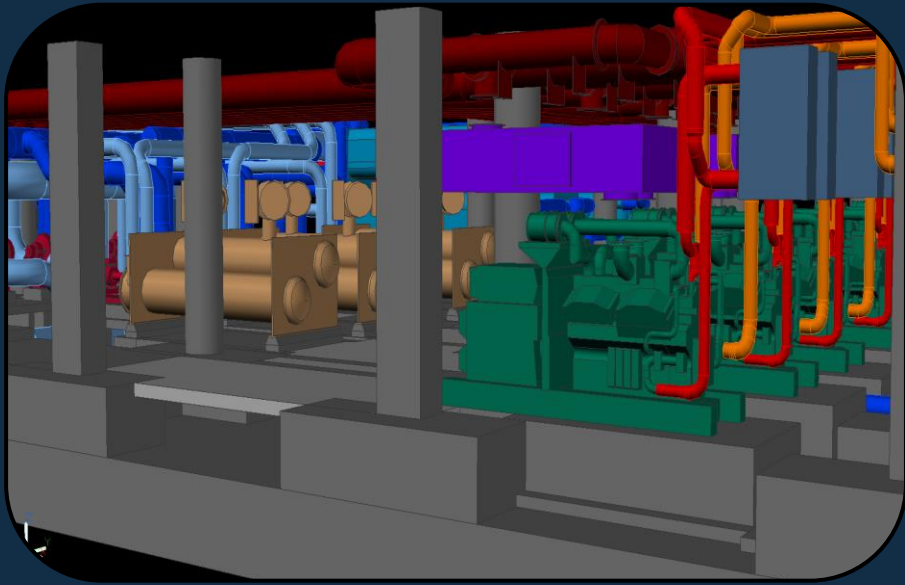


Project Data:

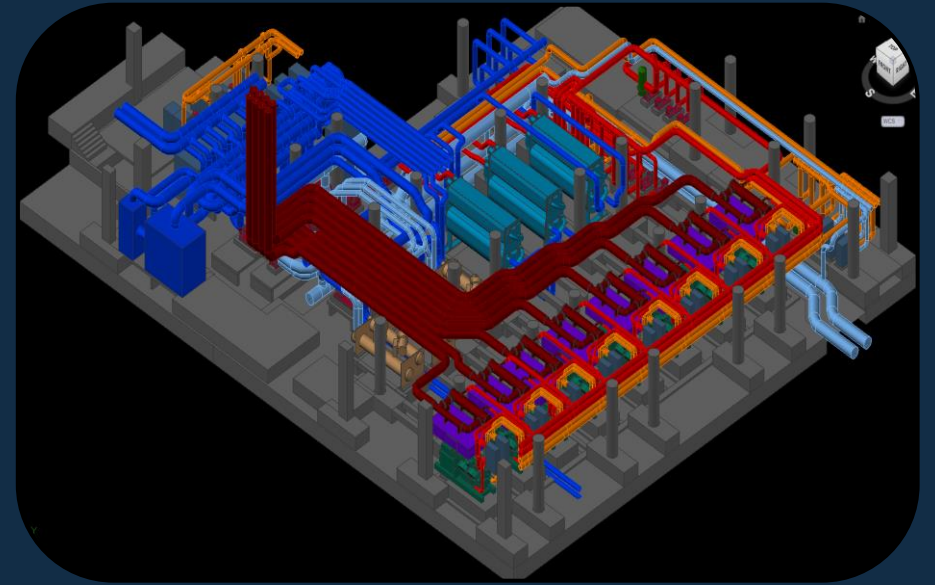
- ↪ **Chilled water:** 8,500 tons of Refrigeration – 380 V
- ↪ **Hot water:** 1,000 kW_{Thermal}
- ↪ **Potable water:** 1,500 m³/day
- ↪ **Power:** 14 MW – 380 V – 1800 rpm
 - ↪ Cummins C2000D6 60Hz



HEADQUARTERS BUSINESS PARK



3D Design Layout



Chillers Unloading





HEADQUARTERS BUSINESS PARK



Pump Hook-up

GRP Piping System



Cooling Tower

Hot Water Heat Exchangers





HEADQUARTERS BUSINESS PARK



LV Main Distribution Panel



HEADQUARTERS BUSINESS PARK



Cummins Generator Set



Pump Feedback & Control



Reverse Osmosis Plant (1,500 m³/day)

Riyadh Park

Location: Riyadh

Date: 2017





BOOT Contract: 31 Years
Contract Value: 567 Million SAR



Utilizes CHP cycle (**C**ombined **H**eat & **P**ower).

↳ Similar concept as Tri-Generation but with different outputs.



Project Data:

↳ **Chilled water:** 7,500 tons of Refrigeration – 4.16 kV

↳ **Potable water:** 1,500 m³/day

↳ **Power:** 12 MW – 13.8 kV – 1800 rpm

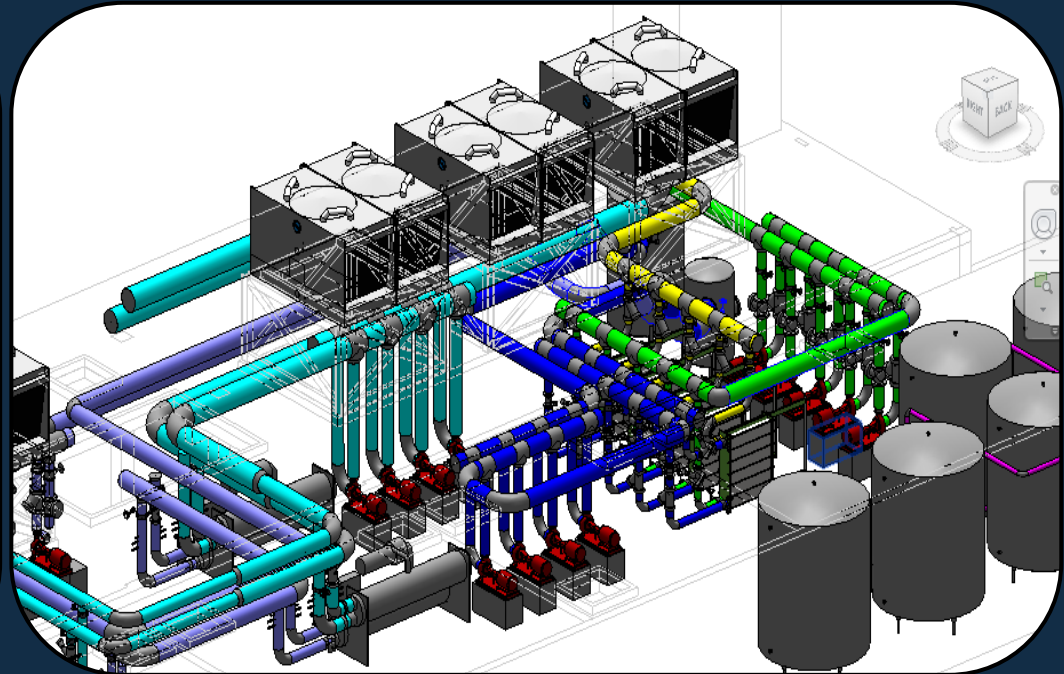
↳ Caterpillar 3516 60Hz



RIYADH PARK



RIYADH PARK



3D Design Layout



Chiller Hook-up



Cooling Tower
Arrangement





RIYADH PARK



RO plant
[1,500 m³/day]



LV Parasitic Load
[Designed & Manufactured
in Al Aman Factories]



Caterpillar Generators Layout
Model: 3516
13.8 kV





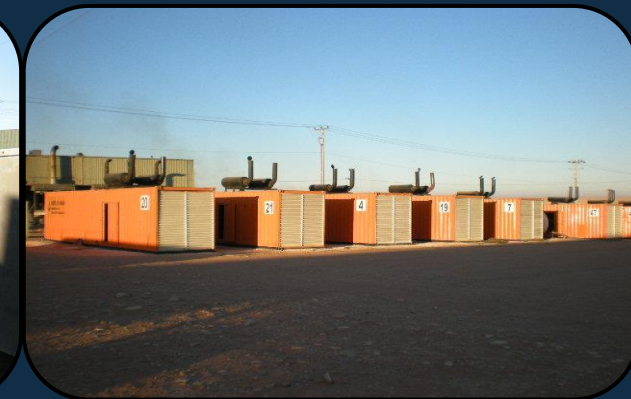
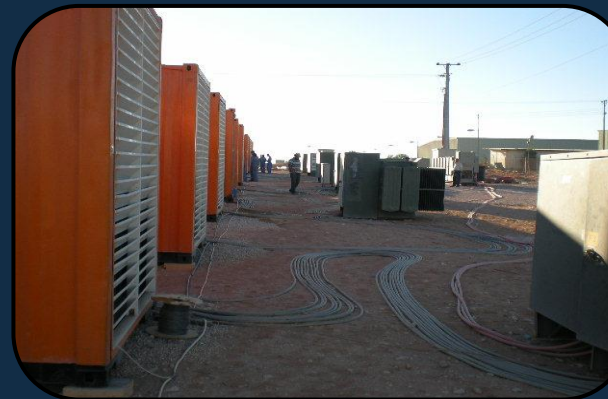
Piping Layout for all systems



Cable Tray Arrangement

PROJECT: SEC – TURAIF SITE**FUEL:** DIESEL**DATE:** 2012**SPEED:** 1800 RPM**CAPACITY:** 10 MW**SCOPE OF WORK DONE:**

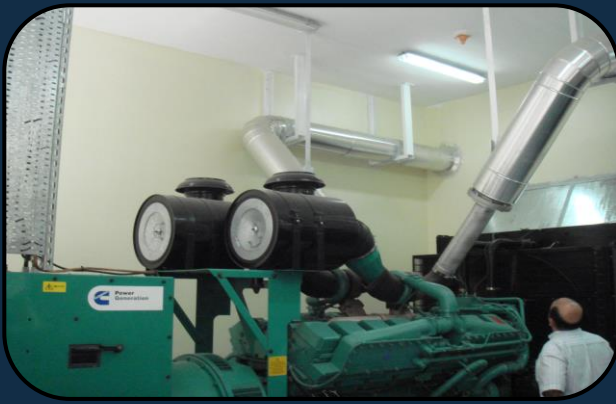
- 25 GENSET SOUNDPROOF ENCLOSURES
- FUEL TANKS
- MV SWITCHGEAR
- SYNCHRONIZING PANEL

**PROJECT:** KAEC**FUEL:** DIESEL**DATE:** 2012**SPEED:** 1800 RPM**CAPACITY:** 25 MW**SCOPE OF WORK DONE:****SCOPE OF WORK DONE:**

• RENTAL OF:

- 25 GENSET SOUNDPROOF ENCLOSURES
- FUEL TANKS
- MV SWITCHGEAR
- SYNCHRONIZING PANEL





PROJECT: AL HADA HOSPITAL

FUEL: DIESEL

DATE: 2009

SPEED: 1800 RPM

CAPACITY: 8 MW

SCOPE OF WORK DONE:

- EPC

PROJECT: AL JAZEERAH PALACE

FUEL: DIESEL

DATE: 2011

SPEED: 1800 RPM

CAPACITY: 12 MW

SCOPE OF WORK DONE:

- EPC



PROJECT: TAIF AIRPORT

DATE: 2012

CAPACITY: 10 MW

SCOPE OF WORK DONE:

- EPC

FUEL: DIESEL

SPEED: 1800 RPM



PROJECT: MADINAH PRINTING

PRESS

DATE: 2008

CAPACITY: 8 MW

SCOPE OF WORK DONE:

- EPC

FUEL: DIESEL

SPEED: 1800 RPM

PROJECT: HUTA/KAEC

FUEL: HFO/DIESEL

DATE: 2016

SPEED: 900 RPM

CAPACITY: 30 MW

SCOPE OF WORK DONE:

- EPC



PROJECT: AL BAIK - AQUAT

FUEL: DIESEL

DATE: 2018

SPEED: 1800 RPM

CAPACITY: 6 MW

SCOPE OF WORK DONE:

- EPC



PROJECT: JEDDAH AIRPORT

DATE: 2014

CAPACITY: 65 MW

SCOPE OF WORK DONE:

- EPC

FUEL: DIESEL

SPEED: 900 RPM





PROJECT: SHARMA/NESMA

FUEL: DIESEL

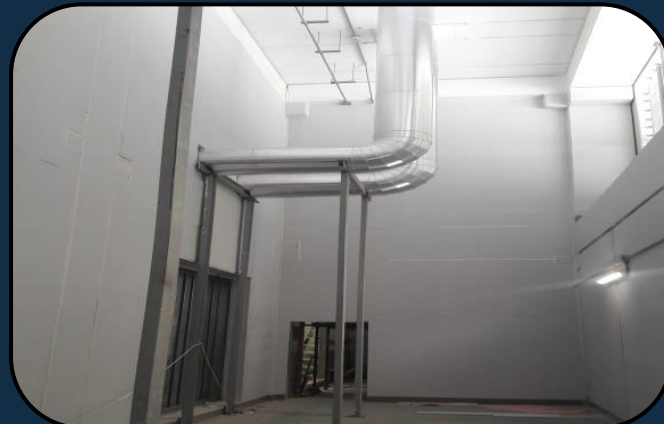
DATE: 2018

SPEED: 1800 RPM

CAPACITY: 18 MW

SCOPE OF WORK DONE:

- EPC
- INDUSTRIAL SOUND TREATMENT



PROJECT: JEDDAH ISLAMIC PORT
DATE: ONGOING
CAPACITY: 12 MW (UP TO 18 MW)
SCOPE OF WORK DONE:

- EPC

FUEL: DIESEL
SPEED: 1800 RPM





PROJECT: UCIC (UNITED CEMENT)

FUEL: HFO/DIESEL

DATE: 2017

SPEED: 750 RPM

CAPACITY: 54 MW

CONSORTIUM WITH MAN DIESEL, GERMANY.

SCOPE OF WORK DONE:

- EPC



PROJECT: RED SEA MALL

DATE: 2013

CAPACITY: 18 MW

SCOPE OF WORK DONE:

- EPC
- INDUSTRIAL SOUND TREATMENT

FUEL: DIESEL

SPEED: 1800 RPM





SOLAR HYBRID PROJECTS



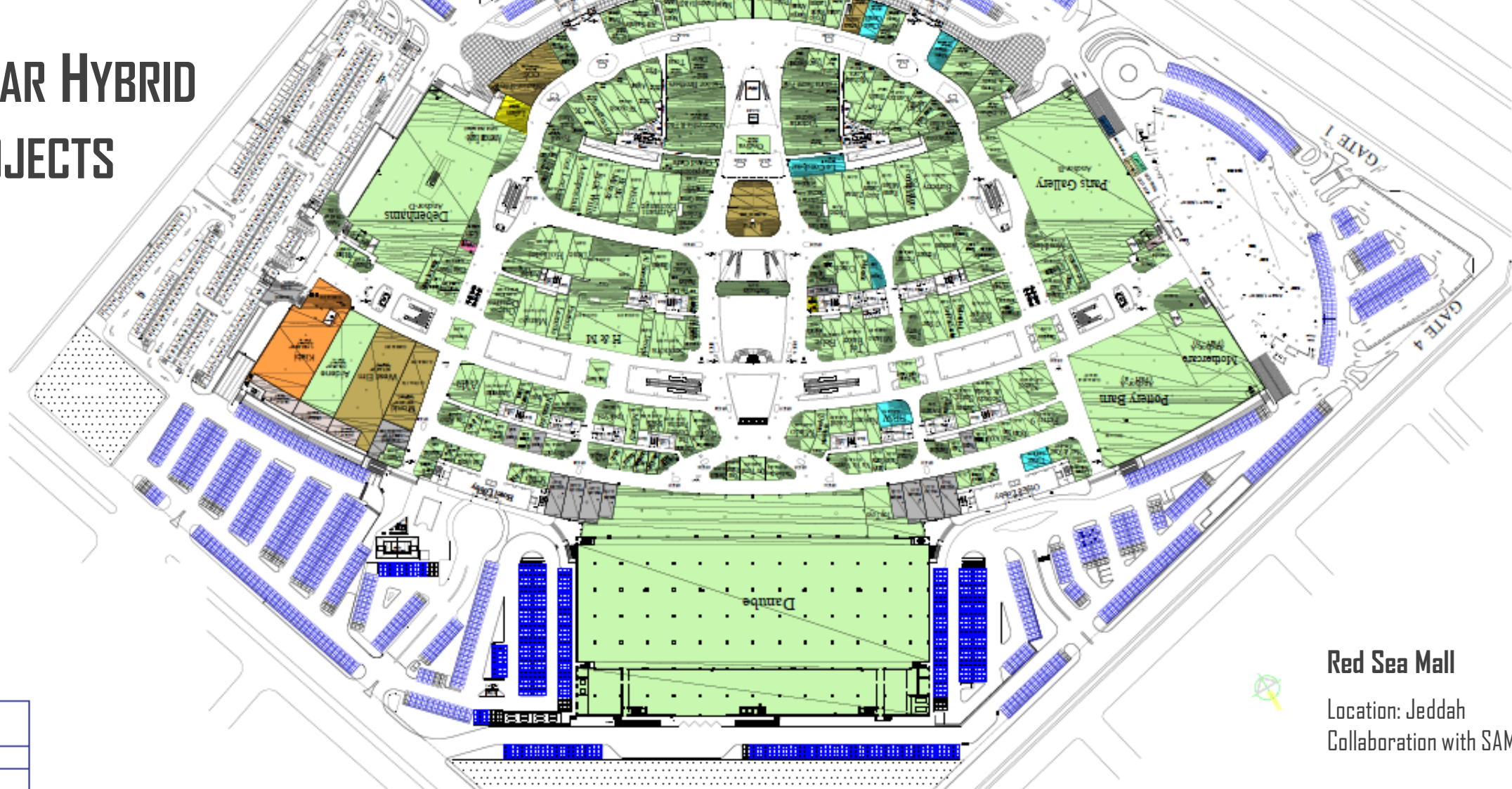
The most recent addition to our repertoire.

↳ Combining **Solar, Conventional/Diesel & Batteries** to provide the most optimal hybrid solution.

PROJECT	RED SEA MALL	MAHMOUD SAEED FACTORY	ENGIE – AL MARAIE
CONTRACT	BOOT	BOOT	EPC
CAPACITY	8 MW	4 MW	30 MW
HYBRID SOLUTION	SOLAR + BATTERIES + DIESEL	SOLAR + BATTERIES + DIESEL	SOLAR + DIESEL + BATTERIES
STATUS	UNDER CONSTRUCTION	UNDER NEGOTIATION	PENDING FINAL AGREEMENT



SOLAR HYBRID PROJECTS



Red Sea Mall

Location: Jeddah
Collaboration with SAMERA



Design Approved for Construction:	
Name:	
Signature:	
Date:	



FLEXI INTERNATIONAL
 RBBB Offices U20-21, Mitchell Road, Corby,
 Northants NN17 5AF
 Company No. 11491417 T: 01480 277 868
 E: info@flexi-international.co.uk

© ALL RIGHTS RESERVED BY FLEXI-INTERNATIONAL LTD

PROJECT DETAILS
RED SEA MALL Saudi Arabia
NOTES:

MODULE LAYOUT
TOTAL POWER: 8367.45 kWp
No. of MODULES: CarPort: 9492 Multi-Storey: 2952 Roof Mounted: 9011 Total : 21455
MODULE POWER: 390Wp
INVERTERS:

DRAWING No. 001 CarPort Module Layout
DRAWN by: Sam Boutorabi
DESIGNED by: Sam Boutorabi
APPROVED by: Keenan Gratrix
Date: 08/01/2018
ISSUE: V1
SCALE: NTS

In Collaboration with



**AL AMAN
SAMERA**

DRAWING KEY

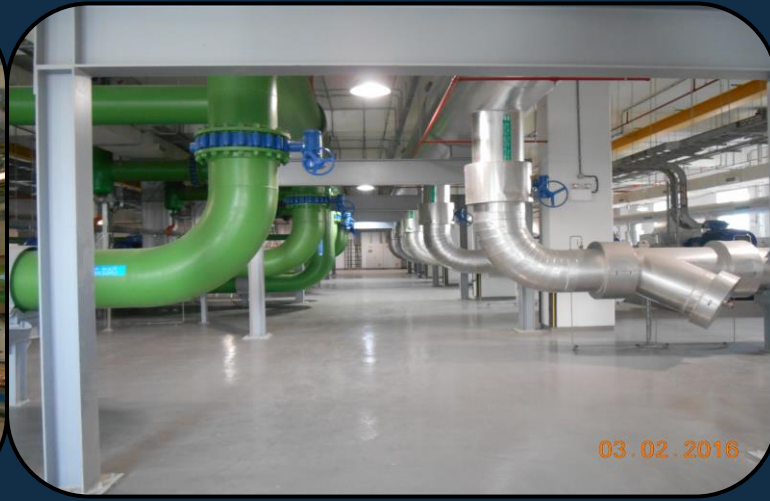


Chilled Water Plant: 6x2,500 Tons water-cooled chillers. Total capacity 15,000 tons.
[Project: King Abdullah Financial District]

MV Cables (13.8 kV)
[Project: King Abdullah Financial District]



Chillers MV Switchgear (13.8 kV)
[Project: King Abdullah Financial District]



Power Plant Piping Layout
[Project: King Abdullah Financial District]



Cooling Tower
[Project: King Abdullah
Financial District]



Chilled water pumps



SCADA & Control System

LAKOS Filtration System
[Project: King Abdullah Financial District]



Chilled Water Plant. Total Capacity 60,000
Tons.
[Project: Hajj Terminal]



Chilled Water Plant.
Chillers Total Capacity 60,000 Tons.
[Project: Hajj Terminal]



Firefighting Deluge System
[Project: Al Hada Hospital]

Firefighting Foam System Piping Layout
[Project: Taif Airport]



Firefighting Foam Bladder Tank
[Project: Al Hada Hospital]



▲ Replacement of Main Distribution Panel.
[Project: Soliman Fakeeh Hospital]



HVAC System: AC Ductwork
[Project: Taif Airport]



Ventilation System
[Project: Soliman Fakeeh
Hospital]



Power: 4 MW inc. Ventilation System.
[Project: Soliman Fakeeh Hospital]



Power: 6 MW inc. Ventilation & Auxiliary Systems
[Project: Hafr Al Batin]



Industrial Sound Treatment
[Project: Hafr Al Batin]

A multitude of certified industrial and manufacturing activities, carried out in our own factories:



GENERATOR SET ENCLOSURES



GENERATOR ROOM ACOUSTICS



DUCT WORKS
*SEPARATE CATALOG



SWITCHGEAR
*SEPARATE CATALOG



STEEL STRUCTURE WORKS



INDUSTRIAL TANKS



SMART METERS (IN PREPARATION)

Location: Jeddah Industrial City 3 (Modon 3).



STEEL WORKS

- ▶ Hot Rolled Steel Structures:
 - › Capable of mass producing any required form when durability, cost & promptness are key.



- ▶ Cold Forming:
 - › Utilized when more unique cross-sections are required.
 - › Precision and ease of assembly are key in all our designs.





STEEL WORKS: APPLICATION

- ▶ Light Gauge Steel Framing:
 - › Using cold rolling to produce strong, light-weight frames for construction.
- ▶ Metal Prefab:
 - › Our factories produce a variety of metal enclosures which are ready for instant use with minimal assembly (residential, power housing, tool sheds).





STEEL WORKS: PROCESS

- › Equipment capable of cold forming; punching & shearing, beam & plate rolling, bending, channel forming for various uses.
- › Production of corrugated sheets, plasma cutting, milling and drilling using software co-ordinates (CNC machining).
- › Robotic coping machine with thermal cutting.
- › Automatic beam welding.
- › Product finishing as required; blasting, painting, galvanizing, coating, plating etc.





STEEL WORKS: PROCESS





STEEL WORKS: PROCESS

INDUSTRIAL DIVISION





**AL AMAN
COMPANY**

