



# **HUSAN ARMS**

---

## **HPA 1210**



**12 CALIBER PUMP ACTION**  
**OPERATION, REPAIR, MAINTENANCE MANUEL & SPARE PART BOOK**  
[www.husanarmusa.com](http://www.husanarmusa.com)





Since you prefer our HPA 1210 Pump Action model, you have purchased a quality HUSAN ARMS product. Your weapon will serve you for many years if you provide the necessary care and maintenance. Instructions and pictures of your weapon are included in the manual. We wish you to enjoy using your gun.

Please read the instructions in this manual thoroughly in order to get to know your gun quickly and safely.

**HPA 1210 products are manufactured in accordance with TSE TS 870 IS standards.**

### **WARNING**

HPA 1210 shall not be liable for damages arising from the use of HUSAN products in violation of the instructions and legal regulations given below; imprudent use, use by someone other than the license holder, unauthorized or unauthorized changes to the product, non-standard cartridge usage or use of cartridges that do not conform to the product specifications, maintenance or repair by unauthorized persons and use and similar reasons. HPA 1212 is not liable for any kind of injury or property damage caused by malicious intent or negligence in the use of the products.

### **WARNING**

The pictures, photographs and descriptions contained in this user manual are informational only. The manufacturer has the right to apply the modifications to the products at any time and without prior notice, or to make any modifications required for any production and commercial requirements.

## 12 CALIBER PUMP ACTION



**HUSAN ARMS**  
**HPA 1210**





## SAFETY RULES

- 1) READ THE MANUAL BEFORE YOU START USING YOUR SHOTGUN.
- 2) MAKE SURE THAT THE MAGAZINE BED AND THE BARREL ARE CLEAN BEFORE USING YOUR SHOTGUN.
- 3) ALWAYS HOLD YOUR GUN BARREL IN A SAFE DIRECTION.
- 4) USE ABSOLUTELY ORIGINAL, DRY, CLEAN, ACCURATE CALIBER AND PROPER PRESSURE CARTRIDGES.
- 5) KEEP YOUR GUN IN A SAFE PLACE TO PREVENT CHILDREN AND UNAUTHORIZED PERSONS FROM REACHING IT.
- 6) USE ABSOLUTELY EYE, EAR AND BODY PROTECTIVE ACCESSORIES DURING SHOOTING.
- 7) KEEP YOUR FINGERS AWAY FROM THE TRIGGER, EVEN WHEN IN THE SAFETY POSITION, WHEN FILLING AND DISCHARGING THE SHOTGUN.
- 8) THE MECHANICAL AND STRUCTURAL PROPERTIES OF THE SHOTGUN SHOULD BE PRESERVED AND NO CHANGES SHOULD BE MADE ON IT.
- 9) AFTER EVERY USE OF YOUR FIRE SHOTGUN, BE SURE TO CLEAN AND MAINTAIN IN ACCORDANCE WITH THE MAINTENANCE GUIDELINES IN THE OPERATING INSTRUCTIONS.
- 10) LEARN THE RELEVANT LAWS AND REGULATIONS OF YOUR COUNTRY'S REGARDING THE TRANSPORT, POSSESSION AND USE OF FIREARMS AND ABSOLUTELY PERFORM ALL NECESSARY PROCEDURES.

# 12 CALIBER PUMP ACTION



**HUSAN ARMS**  
**HPA 1210**

<b>CONTENTS</b>	<b>PAGE NO.</b>
Safety Rules _____	4
Contents _____	5
Technical Specifications _____	6
Operation Principle Of The Shotgun _____	7
Important Warnings _____	8
Dismantling Your Shotgun _____	9 - 10 - 11
Use Of Ammunition _____	12
Exploded View & Spare Part List _____	13-14



**HUSAN ARMS**  
**HPA 1210**

## TECHNICAL SPECIFICATIONS



**HPA 1210 (12 CALIBER)**  
**PUMP ACTION SHOTGUN**

### TECHNICAL SPECIFICATIONS

Model **HPA 1210**

Operation Mode **Pump Action**

Barrel Length **47 Cm**

Overall Length **95 Cm**

Width **6,5 Cm**

Weight **Max. 3 Kg (Empty Magazine)**

Magazine Storage **6+1**



## SHOTGUN WORKING PRINCIPLE

Smoothbore pump action magazine fed shotgun is moved with the first movement from the pump arm and the mechanism carrier arm is moved back together with the action. Mechanism allows this movement to set up the trigger group. With the pump arm, the forward motion, the mechanism moves fast forward together with the carrier arm, and drives the first cartridge to the chamber. By touching the trigger, the ignition system is actuated and the cartridge fires. Explosion caused by the impact of the gunpowder gas burned by the ignition of the cartridge capsule in the chamber; the cartridge plug and the bullet or buckshot pieces move at a high speed in the barrel to leave the barrel. The pump moves the lever backwards to eject the empty shell. The pump arm is moved forward Thus, the mechanism takes the cartridge from the magazine and the rifle is ready to fire again by driving the cartridge to the chamber This operation is repeated automatically by moving the pump arm forward and backward.

## DISMANTLING OF SHOTGUN FOR MAINTENANCE AND CLEANING

### IMPORTANT WARNING OF THE MANUFACTURER

This shotgun is designed to work with original pieces. It is your responsibility to ensure that the disassembled parts are replaced or tampered with, not installed correctly. In order for your shotgun to operate properly and be used safely, it is necessary to use parts manufactured by the manufacturer as spare parts. The owner of the rifle is responsible for all the problems that may arise as a result of the disassembly of the weapon or the failure of the parts not to be fitted correctly after replacement of the spare parts.





**⚠️ LUBRICATION WARNING:** Do not use grease or similar thick oil in the maintenance of your rifle, use thin gun oil and spray gun oil. Make sure the inside of the barrel and the cartridge chamber are clean and dry before you shoot. Never lubricate the cartridges. Firing a shotgun with any obstacle in the barrel may damage the shotgun and cause death or injury. It is the responsibility of the gun owner to have proper maintenance and cleaning of the shotgun.

**⚠️ MAINTENANCE WARNING:**

STEP 1) Dismantle your shotgun for maintenance.

STEP 2) Use appropriate ramrod, clean the barrel several times back and forth by installing a solvent fabric on the end of the ramrod. Then repeat the same process with a dry cloth and clean all the dirt and residue inside the barrel. If there are lead residues on the piston and barrel surface, clean with scotch sandpaper.

STEP 3) If there is lead residual in the barrel after cleaning with the ramrod, then the brass wire brush should be soaked in the solvent and brushed inside the barrel. If lead residuals are present, step 2 should be repeated after cleaning.

STEP 4) The mechanism, the rotating head and the inside of the Box magazine must be slightly lubricated with fine gun oil.

STEP 5) Reinstall the gun and wipe the outer metal surfaces and the inside of the barrel with a light oily piece of fabric.

STEP 6) Place the rifle at a safe place and keep it in a locked place where children and unauthorized persons cannot reach it. Never store your gun in a leather case, because even if it looks dry, it gets damp.

# DISMANTLE OF SHOTGUN

- 1) Before the disassembly process starts, the barrel of the shotgun must show a safe direction and your fingers must be far away from the trigger, outside the trigger and trigger guard. The shotgun must be absolutely empty.
- 2) Press action release (Figure 1) and Retract the charging handle (forend) and lock the bolt back in the open position. Visually and physically check to confirm that the chamber is empty while the bolt is in the locked position. Also make sure that the magazine slot is empty (Figure 2-3).
- 3) Remove the magazine cap.. (Figure 4)
- 4) Shake the barrel slightly and remove it.(Figure 5)



(Figure 1)



(Figure 2)



(Figure 3)



(Figure 4)



(Figure 5)



- 6) Remove the charging handle (forend) with bolt group. (Figure 6)
- 7) Separate the charging handle (forend) and bolt group (Figure 7)
- 8) Separate the bolt group and bolt carrier (Figure 8)

**Note:** The assembly of the shotgun is carried out by reversing the steps in the dismantling process.



(Figure 6)



(Figure 7)



(Figure 8)

# DISMANTLE OF SHOTGUN



**HUSAN ARMS**  
**HPA 1210**

**Note:** Cartridges inside the barrel and magazine are easily removed by pushing the action release handle with the forward backward movement of charging handle (Forend).(Figure 9)



(Figure 9)





## USE OF AMMUNITION

All shotgun shells produced in accordance with the standards, domestic or imported bullet and steel buckshot can be used together with your gun. Since the chamber is designed to be 76 mm cartridge wide, your gun can be used with all cartridges suitable for standard commercially produced 70 – 76 mm. It should not be forgotten that only standard sizes of original cartridges should be used in suitable sizes. It is important to know that the use of overpressure cartridges may lead to wear and tear on the mechanical parts as your gun operate with gas pressure. For this reason, pressure cartridges that will affect the normal operation of the shotgun should not be used.

### **USE OF AMMUNITION WARNING**

We will not be held liable for any damage, death or property damage caused by use of cartridges other than caliber and metric, originally designed for your shotgun, or using cartridges other than standard, handmade, handcrafted, or incorrectly manufactured cartridges, and this is a legal warning.

 **Important Warning:** Unauthorized generation of gas or excessive pressure from firearms can cause gunshot damage or death or serious injury due to any reason. These adverse events can often be caused by old, defective, inappropriate cartridge usage, excessive powder or buckshot filling, as well as obstructions in the barrel or chamber. It is extremely dangerous to use cartridges or buckshot with pressures exceeding industrial standards.

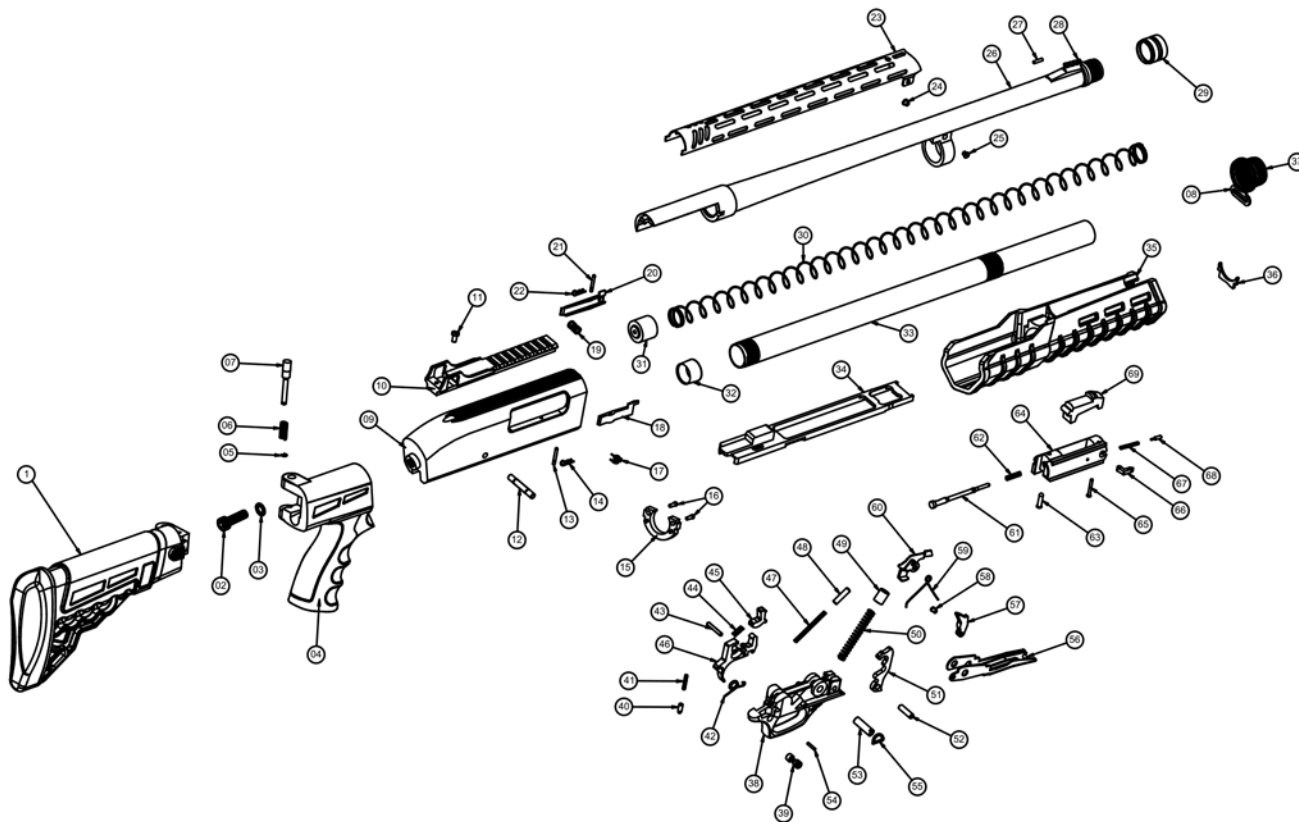
 **Lead Exposure Warning:** Firing in unventilated environments, cleaning the weapon or dealing with ammunition can cause lead exposure. Lead and its components are known to cause birth defects, infertility, cancer or some other serious health problems and injuries. Always have adequate ventilation and thoroughly wash your hands and contact limbs whenever you are exposed to it.

**BARREL MUST BE CLEANED AND RE-LUBRICATED EVERY 50 SHOTS OF BULLET.**

# EXPLODED VIEW & SPARE PART LIST



**HUSAN ARMS**  
**HPA 1210**





## EXPLODED VIEW & SPARE PART LIST

1	FOLDABLE STOCK	24	HEAT GUARD LOCKING SCREW	47	CARRIER DOG SPRING
2	VER FIXING SCREW	25	HEAT GUARD LOCKING NUT	48	CARRIER DOG SPRING CAP
3	SERRATED WASHER	26	BARREL	49	HAMMER PLUNGER
4	PISTOL GRIP	27	PHOSPHORUS SIGHTS	50	HAMMER SPRING
5	FOLDABLE STOCK PIN RING	28	FRONT SIGHT	51	HAMMER
6	FOLDABLE STOCK SPRING	29	BARREL CHOKE CAP	52	HAMMER PIN
7	FOLDABLE STOCK PIN	30	MAGAZINE SPRING	53	TRIGGER PLATE PIN BUSHING
8	FRONT SWIVEL	31	MAGAZINE FOLLOWER	54	SAFETY SPRING RETAINING PIN
9	RECEIVER	32	MAGAZINE SPRING RETAINER	55	TRIGGER PLATE SEGMENT
10	REAR SIGHT	33	MAGAZINE TUBE	56	CARRIER
11	REAR SIGHT SCREW	34	BOLT CARRIER	57	CARRIER DOG
12	RECEIVER PIN	35	FOREND	58	CARRIER DOG RIVETS
13	LATCH PIN	36	FOREND SHEET METAL	59	RELEASE LATCH SPRING
14	LATCH PIN RING	37	MAGAZINE CAP	60	ACTION RELEASE
15	RECEIVER PLASTIC	38	TRIGGER GUARD	61	FIRING PIN
16	RECEIVER PLASTIC SCREW	39	SAFETY BUTTON	62	FIRING PIN SPRING
17	INTERCEPTOR LATCH SPRING	40	SAFETY BUTTON DETENT PIN	63	FIRING PIN RETAINING PIN
18	INTERCEPTOR LATCH	41	SAFETY BUTTON SPRING	64	BOLT
19	LATCH SPRING	42	TRIGGER SPRING	65	EXTRACTOR PIN
20	LATCH	43	TRIGGER PIN	66	EXTRACTOR
21	LATCH PIN	44	TRIGGER SEAR DETENT PIN	67	EXTRACTOR SPRING
22	LATCH PIN RETAINER SEGMENT	45	TRIGGER SEAR	68	EXTRACTOR PIN SPRING PIN
23	HEAT GUARD	46	TRIGGER	69	LOCKING BLOCK



**IMPORTER**  
**HUSAN ARMS USA**

P. +1 254 935 3800 ext. 103  
F. +1 254 613 9120  
11592 Highview Dr.  
Belton, TX 76513

sales@husanarmusa.com  
husanarmusa.com  
husanarms.com

**Husan Metal Teknolojileri Sanayi ve Ticaret A.Ş.**  
Esentepe Mh. 40522. Sk. No:2B P.K. 42700  
BEYŞEHİR / KONYA - TURKEY  
info@husanarms.com - www.husan.com.tr

**Tel: +90 332 511 04 00 - 01 - 02 - 03**  
**Fax : +90 332 511 03 92**



 mka1919\_byhusan  
 husanarms  
 husanarms