

# CLEAR THE AIR OF INJUSTICE

HEALTH, EQUITY & ENVIRONMENTAL IMPACTS (HEEI)

# AIR POLLUTION REGULATION

Use this graphic to better understand the Health, Equity & Environmental Impacts (HEEI) regulation. The HEEI is a proposed community-driven regulation to address the overburdening of air pollution and their cumulative impacts on our local health, safety & well-being. The City of Albuquerque-Bernalillo County Air Board will host a public-hearing to include public comment this December 4th - 8th, 2023 at the ABQ Convention Center.



## THE HEALTH, EQUITY & ENVIRONMENTAL IMPACTS REGULATION WHAT DOES THIS AIR POLLUTION REGULATION DO?

**MAKES IT SO THOSE SEEKING AN AIR POLLUTION PERMIT IN AN OVERBURDENED COMMUNITY MUST COMPLETE A HEALTH, EQUITY & ENVIRONMENTAL IMPACTS ANALYSIS**



**THE PERMITTING PROCESS DOES NOT ADD TO THE CUMULATIVE IMPACTS OF AIR POLLUTION IN OR AROUND OVERBURDENED COMMUNITIES OR FURTHER DEGRADE AIR QUALITY**

THE HEALTH, EQUITY AND ENVIRONMENTAL IMPACTS ANALYSIS PROVIDES AN ADDITIONAL LAYER OF PROTECTION AND SECURITY FROM POLLUTION

## WHAT IS AN 'OVERBURDENED COMMUNITY'?

An **overburdened community** are those neighborhoods who face **high-risk and vulnerability** from the air pollution that is already permitted. These neighborhoods face multiple sources of air pollution along with underlying social, economic and health inequities which increase harm caused.

**HOW THE HEEI DEFINES AN OVERBURDENED COMMUNITY**

**A NEIGHBORHOOD AT \*50TH PERCENTILE OR ABOVE FOR TWO OR MORE OF THE FOLLOWING**

**ENVIRONMENTAL RISKS**

- Particulate Matter
- Ozone (Smog)
- Diesel Particulate Matter
- Annual Toxic Releases
- Traffic Proximity & Volume

**HEALTH RISKS**

- Adult Asthma Rate
- Youth Asthma Rate
- Chronic Obstructive Pulmonary Disease (COPD)
- Heart Disease & Stroke

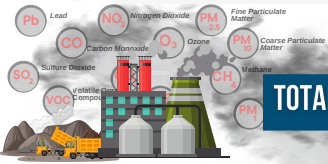
\*50TH PERCENTILE MEANS MORE LIKELY THAN OVER HALF THE COUNTY TO FACE A HEALTH OR ENVIRONMENTAL RISK FACTOR

SCAN TO SEE RISKS IN YOUR COMMUNITY



## WHAT ARE 'CUMULATIVE IMPACTS'?

The **Cumulative Impacts** of air pollution are the **total burden** from chemical and non-chemical air pollutants and their interactions that affect the health, well-being, and safety of a person or population at a point in time or over a period of time.



**Social**



**Environmental**



**Economic**



**INDUSTRIAL AIR POLLUTION**  
+ NOISE, DUST, ODOR, TRAFFIC

- PREMATURE DEATH
- FOOD INSECURITY
- TREE LOSS
- ALGAE BLOOM
- BIODIVERSITY LOSS
- STRESS TO LOCAL BIZ & TOURISM
- DISEASE
- INCREASE CRIME
- INCREASE POVERTY
- OZONE / SMOG
- DROUGHT & FLOOD
- MORE SICK DAYS
- HIGHER HEALTH COSTS
- DEPRESSION & MENTAL HEALTH
- DISLOCATION
- LOSS OF TOP SOIL & FRESH WATER ACCESS
- NATURAL & CULTURAL RESOURCE LOSS

SCAN TO LEARN MORE



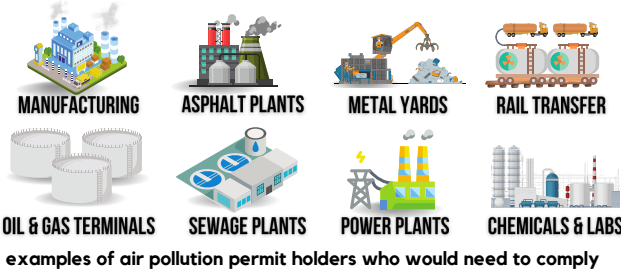
# WHO IS REQUIRED TO COMPLY WITH THE HEEI REGULATION?

ANY APPLICANT FILING FOR AN AIR POLLUTION PERMIT MUST CONDUCT AND PASS A HEALTH RISK SCREENING FOR CANCER AND RESPIRATORY HAZARD  
THIS SCREENING APPLIES FOR THE ONE SQUARE MILE AREA SURROUNDING THE PROPOSED POLLUTION SOURCE THEY WISH TO BUILD OR MODIFY

## ANY AIR POLLUTION PERMIT APPLICANT

THAT

## WILL INCREASE THE AMOUNT OF



### CANCER RISK



### NON-CANCER RESPIRATORY HAZARD RISK



OR

within 1 mile of the proposed polluting source by more than 1 in 1 million or above county average

# WHAT ELSE DOES THE HEEI REGULATION INCLUDE?

SCAN FOR REG



## SOCIO-ECONOMIC ANALYSIS

- % population non-White Hispanic;
- % below federal poverty;
- % 25 and older with no high school diploma or equivalent credential;
- % under age five and % over age 64;
- % over age five w/ English 2nd language.

## IMPROVE PUBLIC NOTICE & PARTICIPATION

- Mail notice and HEEI report in English/Spanish and any language spoken by more than 3% of population
- Community meeting on HEEI report and any concerns

## REPORT HISTORY & CONTROL TECH

- Applicant law & regulation compliance history
- Control & mitigation measures
- and more!

# PROVEN BENEFITS of reducing and preventing air pollution and air toxics

Better Health Outcomes & Life Expectancy

Clean Air Sheds & Improved Visibility

Economic Returns \$ to Local Economy

Safer & Cleaner Streets

Improve Learning & Education Outcomes

Increase Quality of Health Care

Healthier Working Conditions / Less Sick Days

Reduce Crime & Improve Public Safety

Increase Access to Food & Nutrition

Healthier Soil & Fresh Water

AIR POLLUTION KILLS AND CAUSES DISEASE TO MORE POPULATIONS THAN ANY OTHER ENVIRONMENTAL HAZARD. CLEAN AIR PROTECTIONS RESULT IN HUGE BENEFITS AND RETURNS.

# WHO & WHERE IS MOST IMPACTED by air pollution in Albuquerque, NM?

Pregnant Women

Babies, Kids & Seniors

Low-income & People of Color

Agricultural & Land-based Peoples

Immigrant & Refugees

## LOCAL OVERBURDENED NEIGHBORHOODS\*

- MOUNTAIN VIEW
- SAN JOSE
- ATRISCO
- MARTINEZ TOWN
- DOWNTOWN
- LOS RANCHOS
- TRUMBULL VILLAGE

- SOUTH BROADWAY
- SAWMILL
- SUPPER ROCK
- SINGING ARROW
- LOS VOLCANES
- PAJARITO
- GREATER GARDNER

\*a partial list from U.S. Government data, CEJST, 2023

People suffering of disability or disease

People Living by Industrial Areas

Pollinators Pets, Birds, & Bugs

Athletes & Sports Players

Traditional Craftspeople  
Urban Native

Small Local Business

Unhoused & Homeless

Energy, Chemical & Construction Workers

Firefighters and First Responders

Fishers & Hunters

SCAN FOR WEB VERSION



Speak up Burqueños

the HEEI stops dirty businesses exploiting our clean air & land

make public comment this DEC. 4th-8th!

scan for source



WWW.LOSJARDINESINSTITUTE.ORG

Los Jardines Institute

