

AQUAMARINE



SPECIFICATIONS

- 72" L x 84" W x 36" D
- (2) 5.2 BHP 2-Speed Hi-Flow Pumps
- Dual Air Controls
- 5.5 KW Heater
- Performance Light Package
- 220 Volt System
- QCA Ozone System
- 240 Gallons
- 45 Sq. Ft. Filter

UPGRADES

- VibraSound™ Spa Sound System
- Blu Fusion Bromine System
- Wavezone™ UV Sanitation System
- Control My Spa™
- SpaTouch™ 3
- Majestic Light Package

FEATURES

- 5-6 Person Rectangular Lounger Spa
- 40 Therapeutic Stainless Steel Jets
- Soft Pillows
- Patented Dura-Bond™ Acrylic Shell
- Weather Guard™ Maintenance-Free Cabinet
- Automatic Filtration Cycle and Built-In Filter
- Energy Saver System



STANDARD SHELL AND CABINET COLOR



SILVER MARBLE



GRAY CABINET

OPTIONAL SPA SHELL COLORS



MIDNIGHT CANYON



STORM CLOUDS



TUSCAN SUN

OPTIONAL CABINET COLORS



MAHOGANY



CHESTNUT



KNOW YOUR SPA

STANDARD CABINET COLORS

Cabinet colors may vary slightly. The spa models shown are generic and may not match the exact model currently viewed.

Redwood Standard



Chestnut Standard

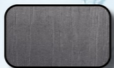


Gray Standard

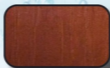


QCA SPAS COLOR SELECTIONS

CABINET COLORS

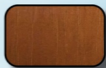


GRAY



***MAHOGANY**

**WHILE SUPPLIES LAST*



CHESTNUT

SPA SHELL COLORS & SPA COVER COLOR



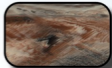
SILVER MARBLE



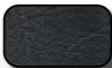
MIDNIGHT CANYON



STORM CLOUDS



TUSCAN SUN



CHARCOAL COLOR COVER

ALL HARD COVERS ARE 4"X 2" OR 5"X 3" FOR ALL SPA SERIES

JET STYLES

Designed and built exclusively for QCA Spas, jets are positioned for optimum performance. Settings range from power surge, which creates a lively swirling action to a high-power flow narrow which delivers a narrow stream for more intense therapy targeting specific areas of your body.



PLEASE NOTE: Shell, cabinet and cover colors may vary from colors shown above. We reserve the right to make changes to the jets, color, and specifications of the spas without notice.

QCA SPAS FEATURES

PATENTED DURA-BOND™



This multi-layered, patented strengthening process combines the beauty of Lucite Plus Acrylic™ with a layer of ABS for shell strength and integrity. Then a double strengthening material is applied. This high density material has all the strengthening properties of fiberglass without the environmental concerns.

SHELL STRENGTHENING SYSTEM

1. Acrylic Plus™
2. ABS
3. Dura-Bond™ with Foam Insulation
4. Polyethylene Foam
5. Maintenance-Free Weather Guard™ Cabinet
6. Polystyrene Insulation
7. Radiant Foil Insulation
8. Thermal Air Barrier
9. Moisture-Resistant Polyethylene Flooring



QCA'S OZONE SYSTEM

Ozone is a safe, convenient, low cost way to clean your spa water. It is a natural purifier that aids in eliminating bacteria, viruses, mold & mildew. It helps remove minerals while using fewer sanitizing water care products. All QCA Spas come equipped with the QCA's Ozone System Natural Water Sanitizing System.



ENERGY SAVER SYSTEM



Heat is generated by the spa's power equipment inside the cabinet. This heated air is captured and returned to the spa's water. This continually helps maintain the water temperature without running the heater as often. This heat recovery system saves you money in electrical cost and helps save our planet.