

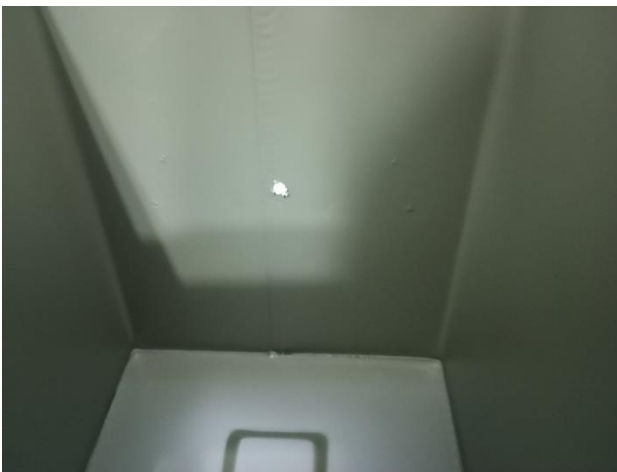
## Instructions

1) Using a center punch, nail or similar

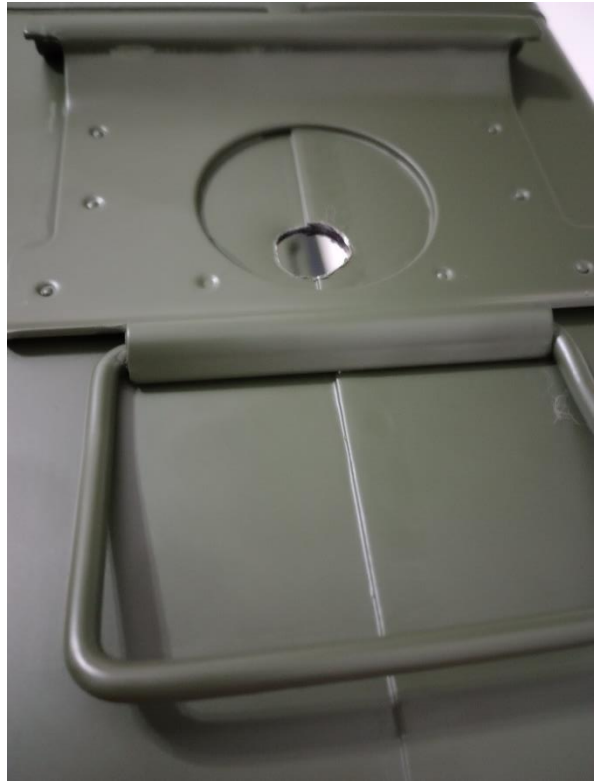


2) Next use a drill on the marked location the first hole should be a 5/32 bit

**(For all drilling make sure to secure the can with a clamp or similar method)**



3) Following that use a 3/8 bit then a 1/2.



4) After drilling the hole , clean the edges with sand paper or a dremel. This will make installation easier and keep the threads from being damaged.

