



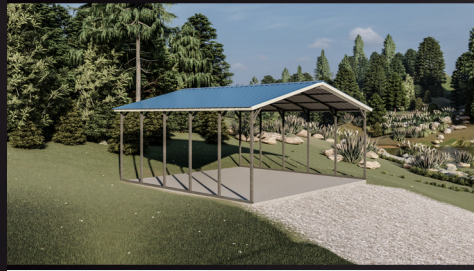
TOL BUILDINGS

DUPLEX

NORTH PRICE SHEET

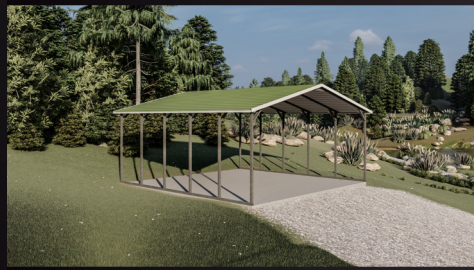
OH, PA, MA & NY

PLATINUM



12x21 \$2,695	18x21 \$3,095	20x21 \$3,795	22x21 \$4,295	24x21 \$4,495
12x26 \$3,495	18x26 \$3,895	20x26 \$4,495	22x26 \$5,095	24x26 \$5,295
12x31 \$4,295	18x31 \$4,695	20x31 \$5,095	22x31 \$5,895	24x31 \$6,495
12x36 \$5,095	18x36 \$5,295	20x36 \$5,895	22x36 \$6,795	24x36 \$7,195
12x41 \$5,295	18x41 \$6,295	20x41 \$6,595	22x41 \$7,995	24x41 \$8,395

LUXURY



12x21 \$2,395	18x21 \$2,695	20x21 \$3,295	22x21 \$3,795	24x21 \$3,895
12x26 \$2,995	18x26 \$3,195	20x26 \$3,495	22x26 \$4,395	24x26 \$4,795
12x31 \$3,295	18x31 \$3,795	20x31 \$4,395	22x31 \$5,095	24x31 \$5,395
12x36 \$3,895	18x36 \$4,395	20x36 \$5,095	22x36 \$5,695	24x36 \$6,295

PREMIUM



12x21 \$2,295	18x21 \$2,595	20x21 \$3,195	22x21 \$3,595	24x21 \$3,795
12x26 \$2,895	18x26 \$2,995	20x26 \$3,295	22x26 \$4,195	24x26 \$4,695
12x31 \$3,195	18x31 \$3,495	20x31 \$4,095	22x31 \$4,795	24x31 \$5,095
12x36 \$3,795	18x36 \$4,095	20x36 \$4,795	22x36 \$5,395	24x36 \$5,995

STANDARD FEATURES

Leg Spacing 4' On Center Or Less, 14ga Galvanized Steel G90, Mobile Home Anchors For Ground, Gravel, Or Asphalt Installations, Concrete Anchors On Every Leg Post On Concrete Installations, All Corner And Peak Braces. 29ga Galvalume Steel Panels, 5' Collar Beam For Added Support On 22' And 24' Wide Units Included.

OTHER OPTIONS

12ga Frame With 20yr Limited Warranty, Units Up To 100' Wide, Certifications Up To 70psf, Limited Lifetime Warranty Panels, Color Screws & Color Roll Up Doors.

 **QUICK, EASY**
INSTALLATION

CERTIFIED 115MPH/55PSF

FREE DELIVERY



Please Note: All Buildings \$3,000 and Under Require A \$300 Basic Installation Fee. Basic Installation Fee Will Cover 1' Off Level Side To Side And 6" Front To Back. Frame Is 1' Shorter Than Roof Length Due To The 6" Overhang (Ex: 12'x21'=12'x20'). A Copy of Generic Drawings To Issue Permit is Provided, Prices Do Not Include Site Specific Engineer Plans Or Calculations, If Required By County Customer Will Need To Pay Or Site Specifics And Calculations, This Might Require Changes On Building And Prices.

SIDE HEIGHT	20'L	25'L	30'L	35'L	40'L
7'	\$90	\$110	\$140	\$160	\$180
8'	\$180	\$230	\$270	\$320	\$360
9'	\$270	\$340	\$410	\$470	\$540
10'	\$360	\$450	\$540	\$630	\$720
11'	\$450	\$560	\$680	\$790	\$900
12'	\$540	\$680	\$810	\$950	\$1,080

BOTH SIDES	20'L	25'L	30'L	35'L	40'L
6'	\$680	\$830	\$980	\$1,130	\$1,280
7'	\$830	\$900	\$1,090	\$1,280	\$1,500
8'	\$860	\$1,050	\$1,280	\$1,430	\$1,730
9'	\$980	\$1,160	\$1,430	\$1,610	\$1,950
10'	\$1,050	\$1,310	\$1,580	\$1,880	\$2,100
11'	\$1,130	\$1,430	\$1,730	\$2,030	\$2,250
12'	\$1,280	\$1,580	\$1,880	\$2,180	\$2,550

VERTICAL SIDES & WAINSCOTING

Vertical Sides	\$650	\$800	\$950	\$1,200	\$1,350
Vertical Wainscoting	\$300	\$375	\$450	\$525	\$600

EACH END	12'W	18'W	20'W	22'W	24'W
6'	\$750	\$980	\$1,050	\$1,280	\$1,350
7'	\$900	\$1,050	\$1,130	\$1,350	\$1,430
8'	\$980	\$1,160	\$1,280	\$1,500	\$1,580
9'	\$1,050	\$1,280	\$1,390	\$1,650	\$1,730
10'	\$1,130	\$1,430	\$1,500	\$1,800	\$1,880
11'	\$1,200	\$1,580	\$1,650	\$2,030	\$2,180
12'	\$1,340	\$1,730	\$1,880	\$2,180	\$2,330

VERTICAL ENDS & WAINSCOTING

Vertical END	\$450	\$600	\$650	\$700	\$750
Vertical Wainscoting	\$250	\$350	\$400	\$450	\$500

GABLE END

12'W	18'W	20'W	22'W	24'W
\$200	\$250	\$300	\$350	\$400

VERTICAL GABLE

\$400	\$500	\$600	\$700	\$800
-------	-------	-------	-------	-------

EXTENDED GABLE

\$400	\$500	\$600	\$700	\$800
-------	-------	-------	-------	-------

EXTENDED VERTICAL GABLE

\$800	\$1000	\$1200	\$1400	\$1,600
-------	--------	--------	--------	---------

CERTIFICATIONS	20'L	25'L	30'L	35'L	40'L
115mph/65psf 6'-12' TALL	\$1,150	\$1,300	\$1,450	\$1,600	\$2,100
4/12 PITCH	CALL FOR DETAILS				

GARAGE DOORS

6X6.....\$600	10X10.....\$900
8X8.....\$700	10X12.....\$1,300
9X8.....\$750	(Chain Hoist) 12X12.....\$1,450
10X8.....\$800	

GARAGE DOOR OPTIONS



COLOR DOOR ADD.....	\$200
45° CUTS (PER OPENING)....	\$100
(Dutch Openings)	

WALK-IN DOORS, WINDOWS, AND ANCHORS

36"X80" (Outswing).....	\$400
Available W/Diamond Window and W/No Window	
9-LITE DOOR 36"X80" (Inswing).....	\$600
ASPHALT ANCHORS.....	\$45ea
MOBILE HOME ANCHORS.....	\$45ea
WINDOWS 24"X36" (White Grid).....	\$300
WINDOWS 30"X30" (Aluminum).....	\$250
WINDOWS 30"X36" (White Grid).....	\$350

FRAMEOUTS-END WALLS (Does Not Include Panels)

WINDOW.....	\$100
WALK-IN DOOR.....	\$150
GARAGE DOOR.....	\$200
RV END.....	1/2 PRICE OF FULL END

HEADER BARS (Side Wall Frameouts)

6' - 12' NO DOOR.....	\$250
6' - 12' WITH DOOR.....	\$150
13' - 16' NO DOOR (21' min length).....	\$500
17' - 20' NO DOOR (26' min length).....	\$700

INSULATION & SEALS

HEADER SEAL.....	\$15/ft
RIDGE CAP FOAM.....	\$150 for 21' +\$25 every 5'
SINGLE BUBBLE (R6).....	\$2.00sq ft
DOUBLE BUBBLE(R9).....	\$2.25sq ft

ROOF: Add 2' to width and multiply by length.

Ex. 18' wide X 21' long 20 X 21 = 420sf X rate.

SIDES: Multiply leg height by length by 2.

Ex. 21' long X 9' tall 9 X 21 = 189 X 2 = 378sf X rate

ENDS: Add 3 to leg height, multiply by building width by 2.

Ex. 18' wide X 9' tall 12 X 18 = 216 X 2 = 432sf X rate

PANELS 3' WIDTH

21'.....	\$175	26'.....	\$200
31'.....	\$225	36'.....	\$250

SKYLIGHT 3' WIDTH

8'.....	\$150	10'.....	\$180
12'.....	\$210		

CUT PANEL FEE

21'.....	\$40	26'.....	\$45
31'.....	\$50	36'.....	\$60

J-TRIM BOTH SIDES

21'.....	\$75	26'.....	\$90
31'.....	\$100	36'.....	\$120

CONNECTION FEE

12' - 18' LEAN TO ON END	\$300	
20' - 24' LEAN TO ON END.....	\$400	
21' SIDE	\$190	26' SIDE...\$225
31' SIDE.....	\$260	36' SIDE...\$300

STANDARD COLORS

PREMIUM COLORS 15%



PANELS AND TRIM
UPGRADE
(ALL COLORS)

29ga LIMITED LIFETIME WARRANTY
ADD 15%
26ga LIMITED LIFETIME WARRANTY
ADD 20%

COLOR
SCREWS

5%