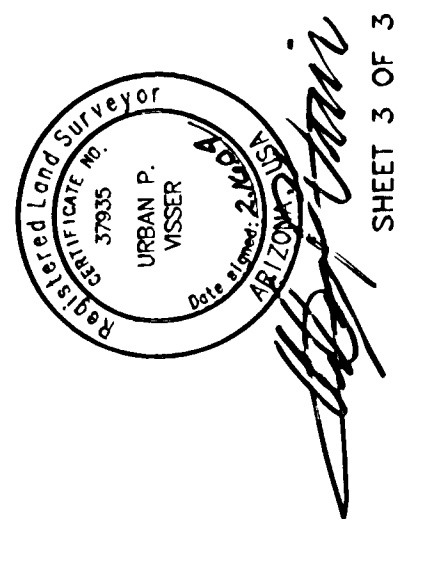
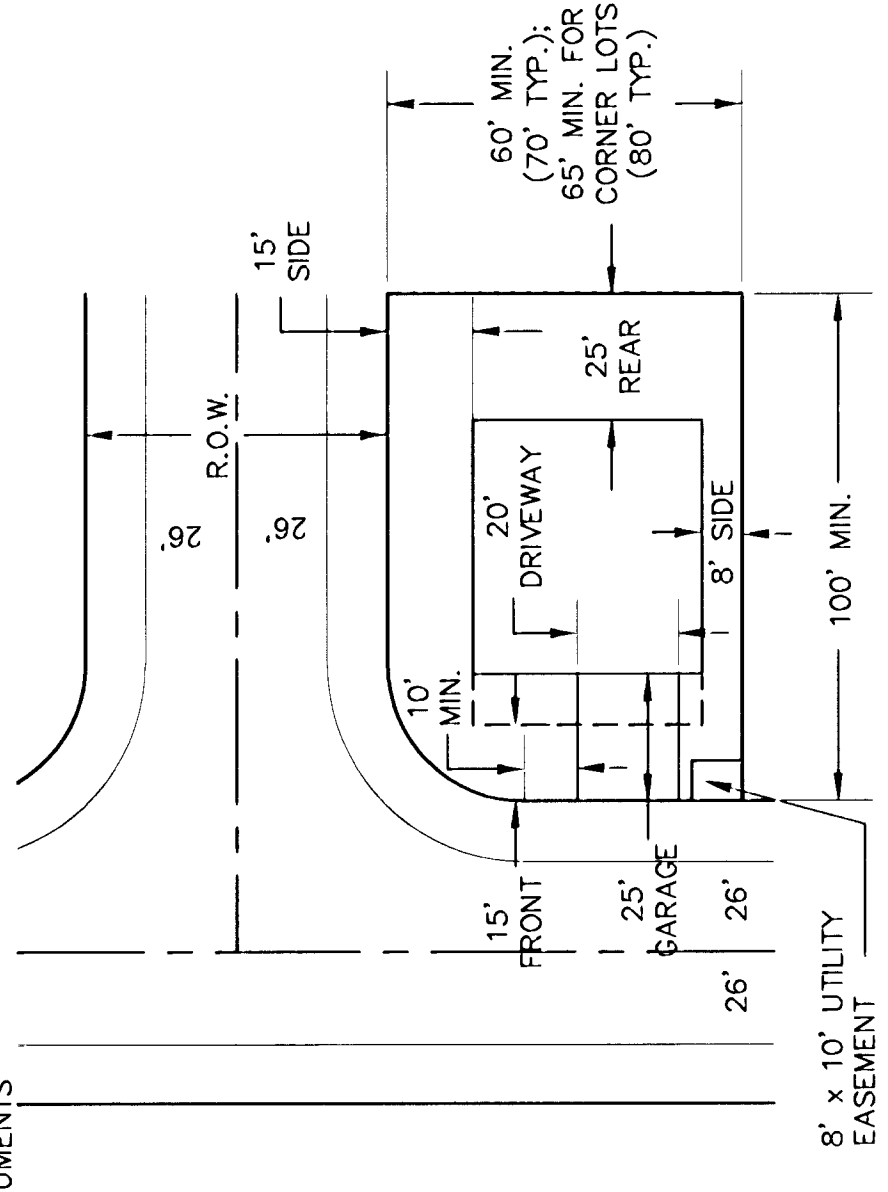


Case 9 map 48B



LEGEND
 UNIT 7B BOUNDARY
 LOT BOUNDARY
 ROAD CENTERLINE
 RIGHT OF WAY, EXISTING
 RIGHT OF WAY, PROPOSED
 EASEMENT AS NOTED
 SECTIONAL LINE
 FOUND REBAR AS NOTED
 FOUND SECTION MONUMENTS
 FOUND CITY OF FLAGSTAFF MONUMENT
 CALCULATED CORNERS
 CALCULATED CENTERLINE MONUMENTS
 TREES TO BE PLANTED



TYPICAL LOT LAYOUT
 PER CITY OF FLAGSTAFF STANDARD NO. 9-01-01
 NOTES:
 MAXIMUM BUILDING COVERAGE: 0.35 (35%)
 MAXIMUM BUILDING HEIGHT: 35'
 REAR SETBACK IS 50' WHEN NEXT TO NATIONAL FOREST (LOTS 77-89).
 TYPICAL LOT DISTRIBUTION CALCULATIONS:
 DRIVEWAY: 500 S.F.
 UTILITY PAD: 80 S.F.
 BUILDING ENVELOPE: 2,400 S.F.
 TOTAL (MAXIMUM): 2,980 S.F.

CULVERT TABLE

LOT NUMBER	CULVERT SIZE
34	18"
37	18"
38	18"
39	18"
97	18"
98	18"
119	18"
120	18"
131	18"
133	18"
134	18"

TREES

LOT NUMBER	TREES
127	5
128	5
129	4
130	2

NOTE: LOT OWNERS ARE REQUIRED TO IRRIGATE AND MAINTAIN BUFFER PLANTINGS.

SPECIAL SETBACKS TABLE

NUMBER	DIRECTION	DISTANCE
L78	N25°13'23"E	53.19'
L79	N26°34'10"W	7.95'
L80	N62°36'50"E	24.29'
L81	S37°36'51"E	49.75'
L82	N33°55'31"W	28.39'
L83	S75°05'14"W	19.67'
L84	N33°26'10"W	74.08'



RECORDED AT REQUEST OF
 CANDACE OWENS
 3 2 60921
 DATE: 03/04 @ 2:10pm
 Records of Coconino County, Arizona
 Candace Owens
 County Recorder

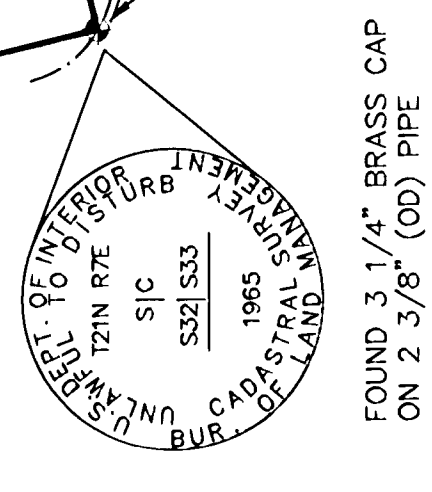
*LOTS 97 AND 98 DRIVEWAY CULVERTS REQUIRED



UNIT 7B

COCONINO NATIONAL FOREST

TRUE POINT OF BEGINNING UNIT 7B



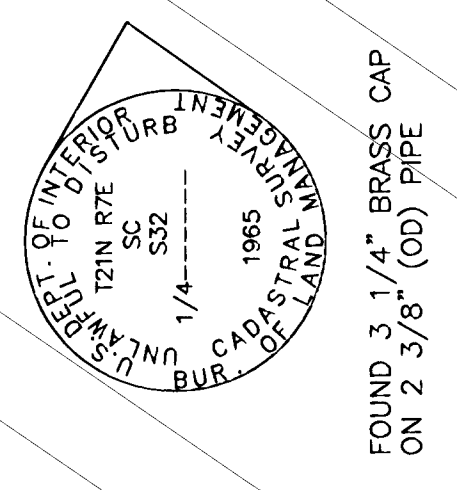
FOUND 3 1/4" BRASS CAP ON 2 3/8" (OD) PIPE

50' SETBACK BUFFERYARD

NUMBER	DELTA ANGLE	RADIUS	ARC LENGTH
C1	12.24 52°	300.00	153.67'
C2	11.41 05°	300.00	151.18'
C3	10.02 22°	45.00	78.57'
C4	12.70 00°	45.00	99.78'
C5	03.07 51°	71.00	3.88'
C6	01.34 34°	325.00	8.97'
C7	00.59 49°	274.26	4.77'
C8	00.36 22°	325.00	3.45'
C9	02.48 47°	325.00	16.01'
C10	02.08 35°	325.00	12.19'
C11	42.52 38°	25.00	18.71'
C12	03.74 52°	53.00	16.11'
C13	42.52 38°	25.00	18.71'
C14	51.36 34°	25.00	22.52'
C15	29.02 02°	25.00	12.67'
C16	18.20 46°	25.00	8.01'

UNIT 7A

SEE SHEET 2



FOUND 3 1/4" BRASS CAP ON 2 3/8" (OD) PIPE