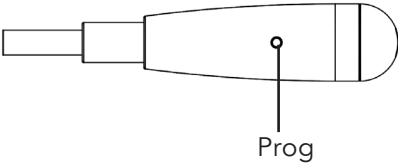
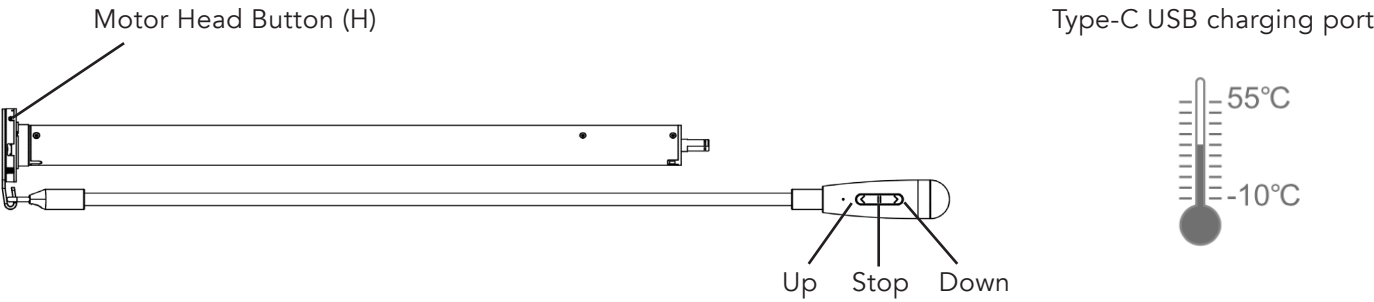


R3100 1.1NM WAND MOTOR

OPERATING INSTRUCTIONS



Motor Layout



Power Options



5V/2A Type-C USB Charging

Motor Head Button Functions (H)

Functions	Note
Sleep mode, wand control inactive	Hold H button for 6 seconds, LED light flashes twice to show the motor is in sleep mode and wand control is inactive. Hold H button or Prog for 2 seconds to exit sleep mode and reactive the wand.
Reverse Motor Direction	Hold H or Prog button for 10 seconds, the motor will jog 3 times and the LED light will flash 3 times. All previous settings are saved after motor direction is reversed.
Motor Reset	Hold H or Prog button for 16 seconds, the motor will jog 4 times and the LED light will flash 4 times. All settings will be deleted.

Reverse Direction

Checking current direction



- 1) Press UP Button 2) Blind goes up 3) Press DOWN Button 4) Blind goes down

Option 1 : Changing direction if the limits are not set



- 1) Press and hold STOP Button for 2 seconds 2) Jog x 1

Option 2 : Changing direction if the limits are set



- 1) Quick Press PROG Button 2) Jog x 1 3) Press UP Button 4) Jog x 1 5) Press DOWN Button 6) Jog x 1

Upper and Lower Limit Setting

NOTE: Before limits are set, the motor will run in jog mode. For continuous operation hold down the UP or DOWN button for 2 seconds. Once limits are set, motor will continuously run between limits. Upper and lower limits cannot be set to the same point.

Setting Upper Limit



- 1) Press UP Button 2) Raise to desired position 3) Press and hold UP & STOP Button for 2 seconds 4) Jog x 2 5) Upper limit set

Setting Lower Limit



- 1) Press DOWN Button 2) Lower to desired position 3) Press and hold DOWN & STOP Button for 2 seconds 4) Jog x 2 5) Lower limit set

Jog Mode / Continuous Mode

NOTE: Before limits are set the motor is in jog mode. When in jog mode hold UP or DOWN for continuous operation. Motor cannot be set to continuous mode before limits are set.

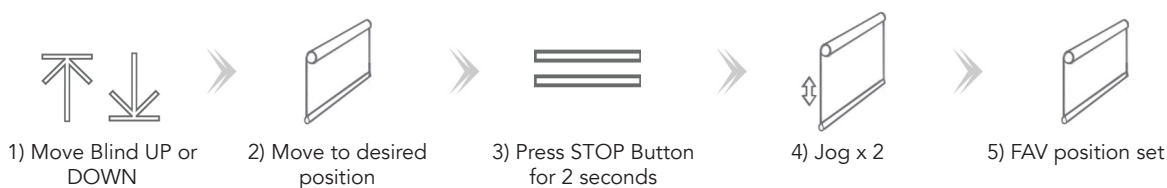
Same operation is used to move between both modes



Setting and Cancelling Favourite Position

NOTE: One Favourite Position per blind

Setting Favourite Position



Cancelling Favourite Position



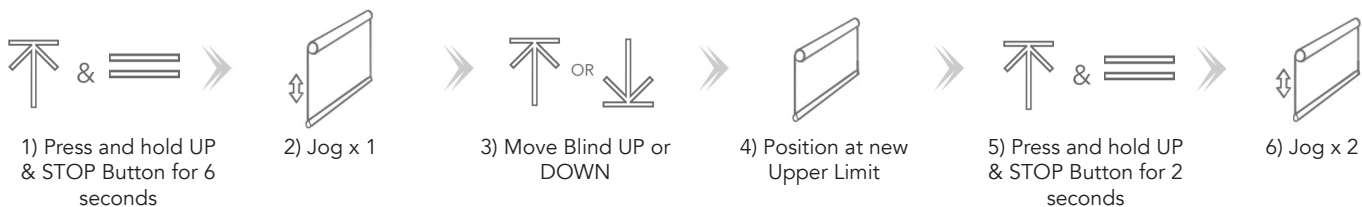
Hot Key for Favourite Position



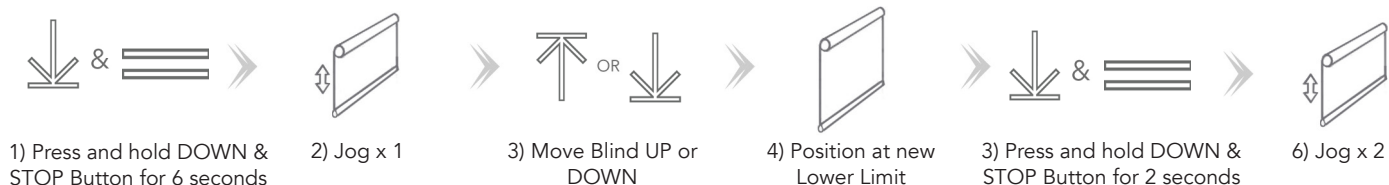
Adjusting Upper and Lower Limits

NOTE: Move to the limit you wish to adjust before starting process. Process has a 4 minute time limit.

Adjusting Upper Limit



Adjusting Lower Limit



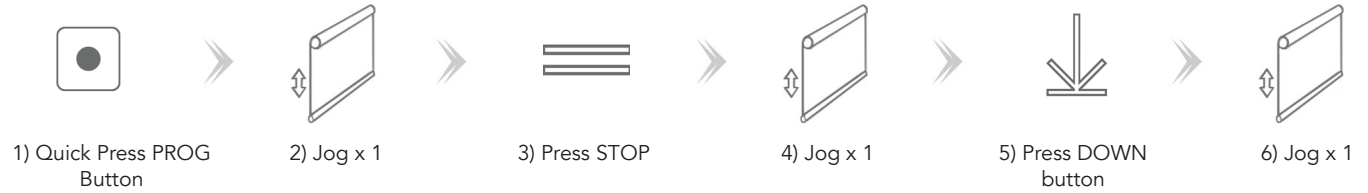
Adjust Motor Speed

NOTE: The motor has 3 speeds. If the motor does not jog at the final stage, the max/min speed has been reached. If the motor is reset it returns to default speed. The Speed of this motor is 20 / 25 / **30** RPM.

Increase Motor Speed



Decrease Motor Speed



Troubleshooting

FAULT	CAUSE	SOLUTION
1. Motor does not work	1. Motor inactive 2. Low battery	1. Hold H or PRG button for 2 seconds to activate motor 2. Charge the motor
1. Motor stops suddenly	1. Upper and lower limit set incorrectly 2. Shade exceed rated load 3. Low battery	1. Reset Upper and Lower limits 2. Adjust load 3. Charge motor
1. LED light flashes 8 times on motor head when motor starts	1. Low battery	1. Charge motor