

**Wilhelmus Berdsen**  
 Berdsen & Berdsen Realty  
 BerdsenBerdsenRealty@gmail.com  
 Cell: 352-613-6298



## 1701 Presidential Way, Unit #A104, West Palm Beach, Florida 33401

Listing

**MLS#:** [M20053365](#) **Prop Type:** Residential **Price:** \$299,000  
**Status:** Active **Type:** Condominium **DOM:** 178



Residential  
**List Price:** \$299,000  
**MLS #:** [M20053365](#)  
**MLS Area:** 5410  
**Zoning:**  
**Type:** Condominium  
**County:** Palm Beach  
**Subdivision:** Lands President Condo 01  
**Beds:** 2 **Baths:** 2/0  
**SqFt Liv Area:** 1,230 **SqFt Total:** 1,470  
**Year Built:** 1971 **Stories Tot:** 1  
**Style:** Contemporary  
**Parcel Num:** [74434317060011040](#)  
**Dev Name:** Lands President Condo 01

**Virtual Tour:** <https://real-estate-photo-video.aryeo.com/sites/xxalvqn/unbranded>

**Legal Description:** LANDS OF THE PRESIDENT COND 1 UNIT A-104

**Elementary:** [Roosevelt](#)  
**High:** [Palm Beach Lakes](#)

**Middle:** [Roosevelt Community](#)

**Public Remarks :** Welcome to this beautifully maintained 2-bedroom, 2-bath first-floor end-unit condo with comfort, privacy, and stylish updates. Renovated bathrooms and new flooring in both bedrooms create a fresh, move-in-ready feel. The kitchen features abundant cabinetry, a spacious pantry, and a coffee bar with wine fridge, ideal for daily living and entertaining. Enjoy two private patios: one off the primary bedroom and a covered, screened-in patio off the living room with access to the second bedroom. The primary suite includes an oversized walk-in closet with full-body mirror. Located in a gated community with lush landscaping, this home offers a 2017/2018 roof, assigned parking, ample guest spaces, and no current assessments. Near downtown restaurants and shopping, it blends convenience, quality, and lifestyle appeal.

**Directions:** Gated community, park in space 10 or guest space only.

### General Information

<b>Senior Cmty:</b> No	<b>Faces:</b>		
<b>Waterfront:</b> No			
<b>Garage #:</b>	<b>Carport #:</b>	<b>Open Parking:</b>	<b>Covered Prk:</b> 0.00
<b>Parking Desc:</b>		<b># Ceiling Fans:</b>	<b>Parking Total:</b> 0
<b>Furnished:</b> Unfurnished			<b>Main Liv Area:</b>
<b>Flooring:</b> Other , Tile			
<b>Construction:</b> Other			
<b>Lot Desc:</b> On Golf Course			
<b>Private Pool:</b> No			

### Rooms

**Dining:** Dining/Living Room, Eat-In Kitchen

### Additional Information

<b>Pets:</b> Yes/Number Limit, Size Limit, Yes	<b>Max # Pets:</b> 1	<b>Wgt Limit:</b>	<b>Pet Fee:</b>
<b>Interior:</b> Pantry, Walk-In Closet(s)			
<b>Equip/App:</b> Dishwasher, Dryer, Range-Electric, Water Heater-Electric, Oven, Refrigerator, Washer, Water Heater			
<b>Guest House:</b>		<b>Gated:</b> Yes	
<b>Assoc Amen:</b> Jogging Path, Pool			
<b>Heating:</b> Central, Electric			
<b>Cooling:</b> Central Air, Electric			
<b>Water:</b> Public	<b>Sewer:</b>	Public Sewer	
<b>Restrictions:</b> Parking - No Commercial Vehicles			

Code

Condo

**Building #:**  
**Parking Sp #:**  
**Unit Design:** Contemporary  
**Security:** Gated Community, Gated with Guard, Security Guard  
**Govern Bodies:** Condominium

**Unit Floor:** 1  
**Approval Info:** Yes  
**Total Floors:**

**# Bldg Units:**  
**Balc/Prch/Pat:**

Financial Information

**Taxes:** \$4,406/2025 City/County  
**Terms:** Cash, Conventional  
**Type Assoc:** Condominium/\$947

**Assumable:**  
**Mbr Fee:**

The information has been provided by the Seller and has not been verified by the Broker. Information is deemed reliable but not guaranteed.

Photos



Photo 1



Photo 2



Photo 3



Photo 4



Photo 5



Photo 6



Photo 7



Photo 8



Photo 9



Photo 10

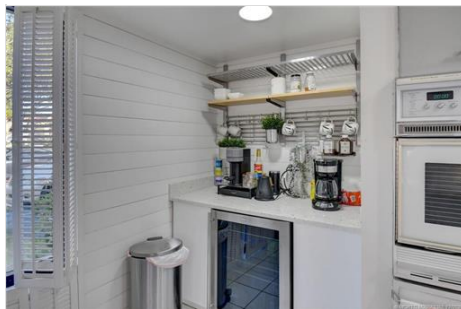


Photo 11



Photo 12



Photo 13



Photo 14



Photo 15



Photo 16



Photo 17



Photo 18



Photo 19



Photo 20



Photo 21



Photo 22



Photo 23



Photo 24



Photo 25



Photo 26



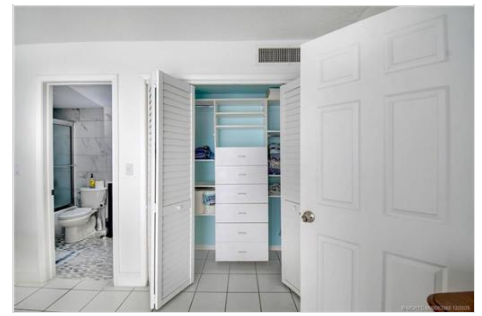
Photo 27



**Photo 28**



**Photo 29**



**Photo 30**



**Photo 31**



**Photo 32**



**Photo 33**



**Photo 34**



**Photo 35**



**Photo 36**



**Photo 37**



**Photo 38**



**Photo 39**



**Photo 40**