

Wilhelmus Berdsen
 Berdsen & Berdsen Realty
 BerdsenBerdsenRealty@gmail.com
 Cell: 352-613-6298



1731 Presidential Way, Unit #C-203, West Palm Beach, Florida 33401

Listing

MLS#: [R11119072](#) **Prop Type:** Residential **Price:** \$387,750
Status: Active **Type:** Condominium **DOM:** 272



Residential
List Price: \$387,750
MLS #: [R11119072](#)
MLS Area: 5410
Zoning: MF32—MULTIFAMIL
Type: Condominium
County: Palm Beach
Subdivision: LANDS OF THE PRESIDENT COND 1
Beds: 2 **Baths:** 2/0
SqFt Liv Area: 1,408 **SqFt Total:** 1,408
Year Built: 1971 **Stories Tot:** 2
Style: Traditional
Parcel Num: [74434317060032030](#)
Dev Name: Lands of the president cond 1

Virtual Tour: <https://www.propertypanorama.com/1731-Presidential-Way-C203-West-Palm-Beach-FL-33401/unbranded>
Legal Description: LANDS OF THE PRESIDENT COND 1 UNIT C-203
Elementary: [Roosevelt](#) **Middle:** [Roosevelt Community](#)
High: [Palm Beach Lakes](#)

Public Remarks : Step into this stunning two bedroom, two bath condo in a gated community just 5 minutes from downtown and 10 minutes from the beach. Enjoy breathtaking golf course views through floor-to-ceiling impact glass windows and relax on two covered patios which are perfect as sunrooms or office dens. Every inch of this home was upgraded with high-end tile flooring throughout, format accent wall tiles, wooden slat detailing and satin-finish Behr Marquee paint. The kitchen is a chef's dream with stone countertops, granite sink, full backsplash, soft-close cabinetry and smart LG appliances including a steam dishwasher and oven/air fryer combo. Smart home features include recessed LED lighting and Alexa/Google-compatible switches. See More Bathrooms boast floating vanities, rain showers with glass doors, integrated bidet toilets and luxe finishes. Both walk-in closets feature custom pull-out drawers and shelving. Additional upgrades: LG smart wash tower, new HVAC system, water heater, baseboards, door trims, mesh patio screen and flat white painted ceilings. Located steps from the community pool and close distance to Tanger Outlets, Whole Foods, Target and more. Pet-friendly with 24-hour manned security, this is the only unit with panoramic golf views and unmatched luxury.

Directions: East on Palm Beach Lakes Blvd, North on Congress Ave, Right on Presidential Way, Proceed to Gate. Entrance of Lands of the President, Continue on Presidential Way; 1731 is on the left.—Guest parking

General Information

Senior Cmty: No	Faces: North	Lender Approval:	
Hardship Pkg:	Short Sale: No	Open Parking:	Covered Prk: 0.00
Waterfront: Yes / Pond	Carport #:	# Ceiling Fans:	Parking Total:
Garage #: 0		Spa: No	Main Liv Area:
Parking Desc: Assigned			
Furnished: Unfurnished			
Construction: CBS, Concrete			
Private Pool: No			
Pool Dim:			
View: Golf Course			
Unit Desc: Exterior Catwalk, Interior Hallway			

Rooms

Main Lvl Bed: 2 **Main Lvl Bath:** 2
Master Bath: 2 Master Baths, 2 Master Suites, Dual Sinks
Dining: Dining/Living Room

Additional Information

Pets: No/No **Max # Pets:** **Wgt Limit:** **Pet Fee:**
Interior: Bedroom Layout - Split, Built-in Features, Closet Cabinetry, Walk-In Closet(s)

Equip/Appl: Cooktop, Dishwasher, Disposal, Dryer, Water Heater-Electric, Freezer-Free-Standing, Refrigerator, Washer, Water Heater
Windows: Skylight(s)
Guest House:
Exterior Feat: Balcony
Assoc Amen: Bike Storage, Pool, Sidewalks, Street Lights
Heating: Central, Electric
Cooling: Central Air, Electric
Water: Public
Restrictions: Buyer Approval Required, Lease Restrictions, Parking Restrictions, Parking - No RV

Sprinkler: Well Sprinkler
Gated: Yes

Sewer: Public Sewer

Condo

Building #: 1731
Cmplx Units:
Parking Sp #:
Unit Design: Traditional
Unit View: Golf Course
Security: Closed Circuit Camera(s), Fire Alarm, Lobby - Attended, Security Guard, Security Lights, Security Patrol, Smoke Detector(s)
Govern Bodies: Condominium

Unit Floor: 2
Min # Days Lse: 60
Approval Info: Yes

Total Floors:
Times Lsd/Yr: 1

Bldg Units:
Interior Lev: Multi/Split
Balc/Prch/Pat:

Financial Information

Taxes: \$4,175/2024 City/County, Homestead Exemption
Terms: Cash, Conventional
Type Assoc: Condominium/\$860/Monthly

Assumable:
Mbr Fee:

The information has been provided by the Seller and has not been verified by the Broker. Information is deemed reliable but not guaranteed.

Photos



52-print-043_5D1A3388



78-print-78-print-MAX_0696JS



2-print-017_5D1A3242



24-print-037_5D1A3354



5-print-018_5D1A3247



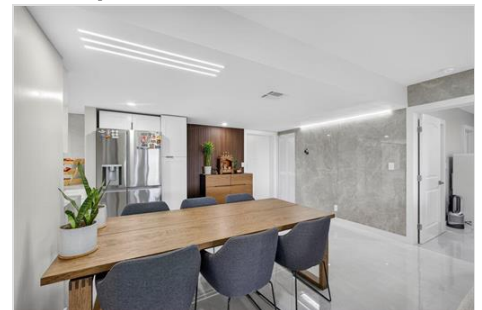
26-print-039_5D1A3362



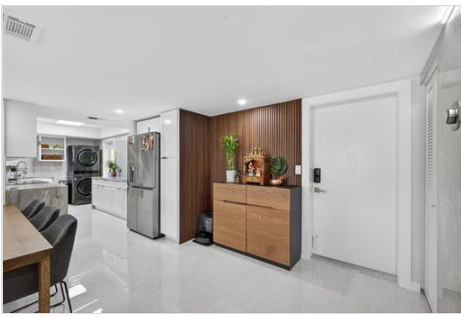
27-print-040_5D1A3367



25-print-038_5D1A3357



23-print-036_5D1A3347



6-print-019_5D1A3252



15-print-028_5D1A3302



16-print-029_5D1A3312



17-print-030_5D1A3318



8-print-021_5D1A3263



9-print-022_5D1A3267



11-print-024_5D1A3277



10-print-023_5D1A3272



7-print-020_5D1A3257



13-print-026_5D1A3293



28-print-041_5D1A3377



19-print-032_5D1A3327



21-print-034_5D1A3340



22-print-035_5D1A3344



30-print-050_5D1A3433



31-print-051_5D1A3437



32-print-052_5D1A3442



33-print-053_5D1A3447



34-print-054_5D1A3454



35-print-055_5D1A3462



36-print-056_5D1A3467



37-print-057_5D1A3473



38-print-058_5D1A3480



39-print-059_5D1A3482



40-print-060_5D1A3489



41-print-061_5D1A3494



42-print-062_5D1A3499



43-print-063_5D1A3504



44-print-064_5D1A3512



45-print-065_5D1A3519



46-print-066_5D1A3523