

**Wilhelmus Berdsen**  
 Berdsen & Berdsen Realty  
 BerdsenBerdsenRealty@gmail.com  
 Cell: 352-613-6298



## 1850 N Congress Ave, Unit #305, West Palm Beach, Florida 33401

Listing

**MLS#:** [B26023196](#) **Prop Type:** Residential **Price:** \$195,000  
**Status:** Active **Type:** Condominium **DOM:** 2



Residential  
**List Price:** \$195,000  
**MLS #:** [B26023196](#)  
**MLS Area:** 5410  
**Zoning:** MF32 (city)  
**Type:** Condominium  
**County:** Palm Beach  
**Subdivision:** PRESIDENTIAL GOLFVIEW CONDO  
**Beds:** 2 **Baths:** 1/0  
**SqFt Liv Area:** 850 **SqFt Total:** 850  
**# Units:** 3 **# Stories:** 3  
**Year Built:** 1981 **Stories Tot:** 4  
**Lot SqFt:** **Lot Size:** 0  
**Acres:** 0.00  
**Parcel Num:** [74434318060063050](#)

**Virtual Tour:** <https://www.propertypanorama.com/1850-N-Congress-Avenue-Unit-305-West-Palm-Beach-FL-33401/unbranded>  
**Legal Description:** PRESIDENTIAL GOLFVIEW COND BLDG F UNIT 305  
**Elementary:** [Roosevelt](#) **Middle:** [Roosevelt Community](#)  
**High:** [Palm Beach Lakes](#)

**Public Remarks :** Fully renovated from top to bottom! Stunning 2BR/1BA 3rd-floor corner unit in an investor-friendly community—rent immediately! This move-in-ready unit features a brand-new A/C, sleek modern kitchen with custom cabinetry, new stainless steel appliances, and luxury vinyl plank flooring throughout. Bright and airy layout with a beautifully updated bathroom and contemporary finishes. Prime location—walk to Palm Beach Outlets and enjoy quick access to I-95, beaches, and downtown West Palm Beach. Perfect opportunity for investors or end users—don't miss out!

### General Information

<b>Sr Community:</b> No	<b>Faces:</b> Northeast	<b>Proj Comp Date:</b>	<b>Apx Lot Size:</b> 0
<b>Spcl List Cnd:</b> Standard			<b>Dock #:</b>
<b>Builder Name:</b>		<b>Open Parking:</b> 2.00	<b>Covered Prk:</b> 0.00
<b>Waterfront:</b> No / None	<b>Carport #:</b>	<b># Ceiling Fans:</b>	<b>Parking Total:</b> 2
<b>Garage #:</b>			<b>Main Liv Area:</b>
<b>Parking Desc:</b> Open			
<b>Furnished:</b> Unfurnished			
<b>Flooring:</b> Laminate			
<b>Construction:</b> CBS, Concrete			
<b>Private Pool:</b> No			
<b>View:</b> Other			

### Rooms

**Main Lvl Bed:** 2 **Main Lvl Bath:** 1  
**Master Bath:** Separate Shower

<u>Room</u>	<u>Dimensions</u>	<u>Level</u>	<u>Description</u>
Living Room	13 X 12	Main	
Kitchen	10 X 8	Main	
Master Bedroom	11 X 12	Main	

### Additional Information

<b>Pets:</b> Yes/No Restrictions, Number Limit, Yes	<b>Max # Pets:</b>	<b>Wgt Limit:</b>	<b>Pet Fee:</b>
<b>Interior:</b> Walk-In Closet(s)			
<b>Equip/Appl:</b> Dishwasher, Range, Refrigerator			
<b>Windows:</b>		<b>Sprinkler:</b> Auto Sprinkler	
<b>Guest House:</b>		<b>Gated:</b> No	
<b>Assoc Amen:</b> None			
<b>Heating:</b> Central Individual, Electric			





20250430\_133953\_copy\_12...



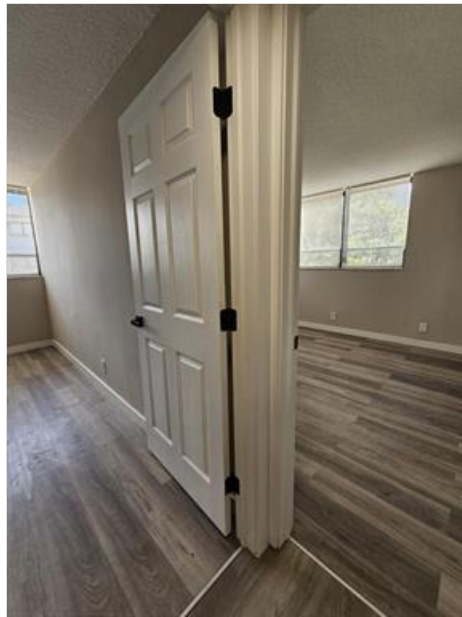
20250430\_134006\_copy\_12...



20250430\_134017\_copy\_12...



20250430\_134037\_copy\_12...



20250430\_134047\_copy\_12...



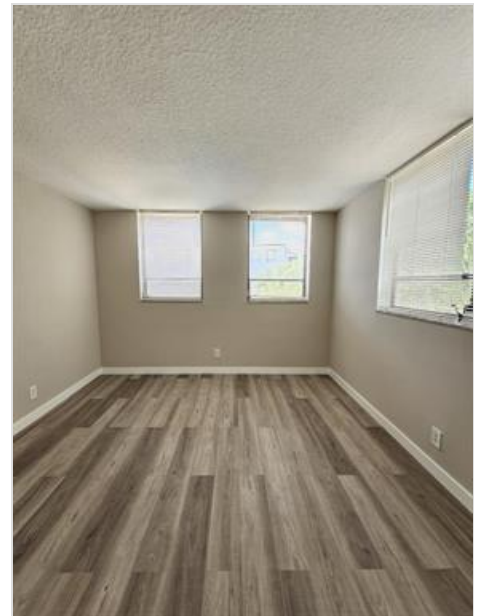
20250430\_134055\_copy\_12...



20250430\_134125\_copy\_12...



20250430\_134134\_copy\_12...



20250430\_134144\_copy\_12...



20250430\_134154\_copy\_12...



20250430\_134206\_copy\_12...



20250430\_134216\_copy\_12...



20250430\_134224\_copy\_12...