

**Wilhelmus Berdsen**  
 Berdsen & Berdsen Realty  
[BerdsenBerdsenRealty@gmail.com](mailto:BerdsenBerdsenRealty@gmail.com)  
 Cell: 352-613-6298



## 1900 Consulate Pl, Unit #604, West Palm Beach, Florida 33401

Listing

**MLS#:** [R11153820](#)  
**Status:** Active

**Prop Type:** Residential  
**Type:** Condominium

**Price:** \$789,000  
**DOM:** 131



Residential  
**List Price:** \$789,000  
**MLS #:** [R11153820](#)  
**MLS Area:** 5410  
**Zoning:** MF32(c)  
**Type:** Condominium  
**County:** Palm Beach  
**Subdivision:** LANDS OF THE PRESIDENT/CONSULATE CONDO  
**Beds:** 3  
**SqFt Liv Area:** 2,250  
**Year Built:** 1980  
**Lot SqFt:**  
**Acres:** 0.00  
**Style:** Mediterranean  
**Parcel Num:** [74434317210000604](#)  
**Dev Name:** THE CONSULATE ASSOCIATION CONDOMINIUM

**Baths:** 2/1  
**SqFt Total:** 2,884  
**Stories Tot:** 22  
**Lot Size:** 0

**Virtual Tour:**  
**Legal Description**  
**Elementary:**  
**High:**

<https://www.propertypanorama.com/1900-Consulate-Place-604-West-Palm-Beach-FL-33401/unbranded>  
 CONSULATE COND UNIT 604  
[Roosevelt](#)  
[Palm Beach Lakes](#)

**Middle:** [Roosevelt Community](#)

**Public Remarks :** :LOVELY MOVE IN READY FULL 3 BR 2.5 BATH APARTMENT. The Consulate is a de luxe full service building known as the Grande Dame with mind boggling views on the exclusive private Dutchman's Pipe Golf Course and West Palm Beach City Line from the wrap around terrace with full floor to ceiling sliding window doors. Amenities offered at the Consulate are: Full time building manager, 24/7 white glove Concierge, 2 man maintenance crew, golf valet 7 days from 5 to 11 PM, beautifully renovated lobby and club room, Top of the line Gym, large lap pool w/ spa and sun area, Tennis court/pickle ball/basket ball ring, one deeded carport per apt, party room, library, bike storage, extra storage cage. HOA also includes cable + internet, + nowhere else offered service .contract on appliances, AC. This building is located in a prime location with short distance to PBI Airport, Palm Beach Island and Beaches and West Palm Beach is truly a booming Mega Center for culture w/ Kravis Ctr, Norton Museum, fine shopping and dining. Lands of the President is just adjacent to the Tanner Outlet Mall w/ Whole Foods, Saks of Fifth, Nordstrom, Marshalls, Home Goods, and the recently newly opened The Belgrove Marriott Autograph Hotel & the Dutchman's Pipe Country & Golf Club.

**Directions:** I-95 EXIT 71 PALM BEACH LAKES BLVD, GO EAST TO CONGRESS AV. MAKE A LEFT, NEXT TRAFFIC LIGHT GO RIGHT, PROCEED TO MANNED GATE, SHOW ID, FIRST STREET ON THE RIGHT PROCEED TO CUL DE SAC. GUEST PARK

### General Information

|   |                     |                        |                          |
|---|---------------------|------------------------|--------------------------|
| <b>Senior Cmty:</b> No  | <b>Faces:</b> South |                        |                          |
| <b>Spcl List Cnd:</b> Standard                                    |                     |                        |                          |
| <b>Builder Name:</b> Other  |                     | <b>Proj Comp Date:</b> | <b>Apx Lot Size:</b> 0   |
| <b>Waterfront:</b> No   |                     |                        |                          |
| <b>Garage #:</b>  | <b>Carport #:</b> 1 | <b>Open Parking:</b>   | <b>Covered Prk:</b> 1.00 |
| <b>Parking Desc:</b> Carport, Circular Driveway, Deeded, Detached |                     | <b># Ceiling Fans:</b> | <b>Parking Total:</b>    |
| <b>Furnished:</b> Unfurnished                                     |                     |                        | <b>Main Liv Area:</b>    |
| <b>Construction:</b> CBS  |                     |                        |                          |
| <b>Lot Desc:</b> On Golf Course, Sidewalks                        |                     |                        |                          |
| <b>Private Pool:</b> No   |                     | <b>Spa:</b> Yes        |                          |
| <b>Pool Dim:</b>  |                     |                        |                          |
| <b>View:</b> City, Golf Course, Pond, Pool, Tennis                |                     |                        |                          |
| <b>Unit Desc:</b> Corner/End Unit                                 |                     |                        |                          |

### Rooms

**Main Lvl Bed:** 3  
**Master Bath:** Master Bdrm - Ground, Separate Shower, Separate Tub  
**Dining:** Breakfast Area, Dining/Living Room, Eat-In Kitchen

[Additional Information](#)

**Additional Information**

|                       |   |                    |                   |                 |
|-----------------------|---|--------------------|-------------------|-----------------|
| <b>Pets:</b>          | No/No   | <b>Max # Pets:</b> | <b>Wgt Limit:</b> | <b>Pet Fee:</b> |
| <b>Interior:</b>      | Bar, Closet Cabinetry, Pantry, Roman Tub, Storage, Walk-In Closet(s)  |                    |                   |                 |
| <b>Equip/App'l:</b>   | Dishwasher, Disposal, Range-Electric, Water Heater-Electric, Refrigerator, Washer, Water Heater   |                    |                   |                 |
| <b>Windows:</b>       | Sliding   | <b>Sprinkler:</b>  | Auto Sprinkler    |                 |
| <b>Guest House:</b>   |   | <b>Gated:</b>      | Yes               |                 |
| <b>Exterior Feat:</b> | Balcony, Tennis Court(s)  |                    |                   |                 |
| <b>Assoc Amen:</b>    | Basketball Court, Bike Storage, Community Room, Elevator(s), Fitness Center, Internet Included, Jogging Path, Library, Management, Manager On Site, Parking, Pickleball Court(s), Pool, Sauna, Spa/Hot Tub, Storage, Tennis Court(s), Trash Chute |                    |                   |                 |
| <b>Heating:</b>       | Central   |                    |                   |                 |
| <b>Cooling:</b>       | Central Air   |                    |                   |                 |
| <b>Water:</b>         | Public  | <b>Sewer:</b>      | Public Sewer      |                 |
| <b>Roof:</b>          | Other   |                    |                   |                 |
| <b>Restrictions:</b>  | Lease Restrictions, No Corporate Buyer, Parking - No Commercial Vehicles  |                    |                   |                 |

**Condo**

|                       |  |                        |     |                        |   |                        |  |
|-----------------------|--|------------------------|-----|------------------------|---|------------------------|--|
| <b>Building #:</b>    | 1900   | <b>Unit Floor:</b>     | 6   | <b>Total Floors:</b>   |   | <b># Bldg Units:</b>   |  |
| <b># Cmplx Units:</b> |  | <b>Min # Days Lse:</b> | 120 | <b># Times Lsd/Yr:</b> | 1 | <b># Interior Lev:</b> |  |
| <b>Parking Sp #:</b>  |  | <b>Approval Info:</b>  | Yes |                        |   | <b>Balc/Prch/Pat:</b>  |  |
| <b>Unit Design:</b>   | Mediterranean  |                        |     |                        |   |                        |  |
| <b>Unit View:</b>     | City, Golf Course, Pond, Pool, Tennis  |                        |     |                        |   |                        |  |
| <b>Security:</b>      | Closed Circuit Camera(s), Fire Alarm, Fire Sprinkler System, Gated with Guard, Lobby - Attended, Security Patrol, Security System, Smoke Detector(s) |                        |     |                        |   |                        |  |
| <b>Govern Bodies:</b> | Condominium  |                        |     |                        |   |                        |  |

**Financial Information**

|                    |                             |                   |  |
|--------------------|-----------------------------|-------------------|--|
| <b>Taxes:</b>      | \$8,372/2025 County Only    | <b>Assumable:</b> |  |
| <b>Terms:</b>      | Cash, Conventional          | <b>Mbr Fee:</b>   |  |
| <b>Type Assoc:</b> | Condominium/\$1,122/Monthly |                   |  |

The information has been provided by the Seller and has not been verified by the Broker. Information is deemed reliable but not guaranteed.

**Photos**



**ENTRANCE HALL**



**ENTRANCE TO LR**



**ENTRANCE**



**GREAT ROOM**



**GREAT FOR ENTERTAINING**



**LIVING ROOM**



**LIVING ROOM**



**LIVING ROOM**



**LIVING ROOM**



**DINING AREA OPEN TO KITCHEN**



**DINING AREA**



**KITCHEN OPEN TO DINING AREA**



**EAT IN KITCHEN**



**KITCHEN**



**KITCHEN**



**16 laundry room 01**



**POWDER ROOM**



**PRINCIPAL BEDROOM**



**PRINCIPAL BEDROOM**



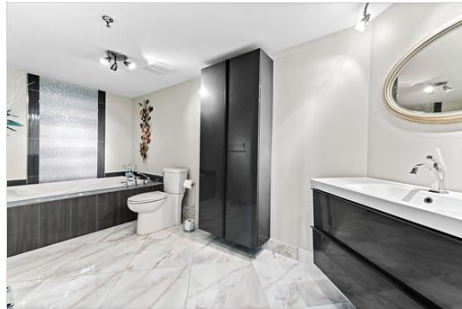
**PRINCIPAL BEDROOM**



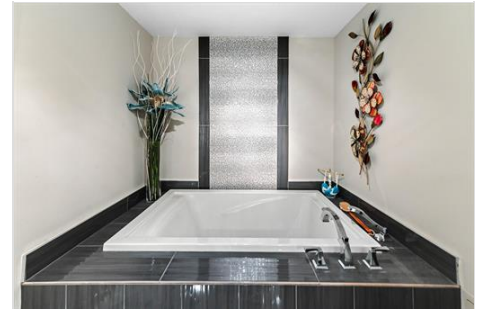
**DRESSING AREA**



**PRINCIPAL BATH**



**PRINCIPAL BATH**



**PRINCIPAL BATH**



**GUEST AREA**



**GUEST BATH**



**BEDROOM 3**



**BEDROOM 3**



**BEDROOM 2/OFFICE**



**BEDROOM2/OFFICE**



**FLORIDA LIVING**



**INCREDIBLE BALCONY SPACE**



**LOUNGING ON THE BALCONY**



**FLORIDA LIVING**



**LOUNGING ON THE BALCONY**



**WRAP AROUND BALCONY**



**VIEW**



**VIEW**



**VIEW**



**THE CONSULATE**

---

Wim Berndsen | Berndsen & Berndsen Realty | BerndsenBerndsenRealty@gmail.com | Cell: 352-613-6298