



**Wim Berndsen**  
 Cell: 352-613-6298  
 wimberndsenrealtor@gmail.com  
 BerndsenBerndsenRealty.com  
 BerndsenBerndsenRealty@gmail.com



**Berndsen & Berndsen Realty**  
 West Palm Beach

Listing

**2427 Presidential Way # 701 West Palm Beach, FL 33401**



Condo/Co-Op/Villa/Townhouse  
**List Price:** \$699,000  
**MLS #:** [R10968852](#)  
**Status:** Active **MLS Area:** 5410  
**Zoning:** MF32(c)  
**Type:** Condo  
**Prop Class:** Condo/Co-Op/Villa/Townhouse  
**County:** Palm Beach  
**Subdivision:** LANDS OF THE PRESIDENT  
**Beds:** 2 **Baths:** 2/0  
**SqFt Liv Area:** 2,144 **SqFt Total:** 2,748  
**Year Built:** 1982/Resale  
**Style:** C42-Condo 5+ Stories  
**Parcel Num:** 74434318080000701  
**Dev Name:** Parliament East

**Legal Description:** PARLIAMENT EAST COND UNIT 701  
**Virtual Tour:** <https://www.propertypanorama.com/2427-Presidential-Way-701-West-Palm-Beach-FL-33401/unbranded>  
**Maint Fee Incl:** Security, Garbage And Trash Removal

**Remarks:** This corner 2/2 unit is bright and airy and offers 2144 SF of Living space for relaxing and entertaining, plus large, wrap around terrace with access from every room overlooking the Banyan Cay Jack Nicholas Signature golf course. All rooms are very spacious and the principal BR has two walk-in closets. A separate laundry room has storage, plus an extra large storage closet on the balcony. The Parliament is a boutique building with only four units per floor and 45 units in the entire building with its own manager. The building has gone thru a major rehabilitation and is like brand new. The community is ideally located and is safe and guarded 24/7. You are minutes from the Palm Beach Outlets, City Place (Rosemary Sq), I-95, PBIA, downtown & the beach. This is an amazing rare opportunity

**Directions:** I-95 EXIT 71 - Go East to Congress, left to Presidential. Proceed to manned gate house and drive to last 12 story highrise on your left.

**General Information**

<b>HOPA:</b> No HOPA	<b>Short Sale:</b> No	<b>Faces:</b>	<b>Apx Lot Size:</b> West of US-1
<b>REO:</b> No	<b>How Paid:</b>	<b>Lender Apprv:</b>	<b>Build Lot/Unit#:</b>
<b>Builder Name:</b>		<b>Proj Comp Date:</b>	<b>Dock #:</b>
<b>Comm Dev Dist:</b>		<b>Amt Annually:</b>	
<b>Waterfront:</b> No/Pond Front		<b>Carpport #/Desc:</b>	<b>Main Liv Area:</b>
<b>Garage #/Desc:</b> 0		<b># Ceiling Fans:</b>	
<b>Furnished:</b> Furniture Negotiable		<b>Parking Rstrct:</b> No Motorcycle, No Trucks/Trailers	
<b>Parking:</b> Assigned Parking, Covered Parking, Deeded Parking, Driveway, Guest Parking		<b>Lot Desc:</b> West Of Us 1	
<b>Flooring:</b> Carpeted Floors, Ceramic Floor		<b>Spa:</b> Yes	
<b>Construction:</b> Concrete Block Construction		<b>Design Desc:</b> Three Or More Stories	
<b>Pools:</b> No			
<b>Pool Dim:</b>			
<b>View:</b> Golf View, Water View			

**Rooms**

**Bedroom:** /  
**Master Bath:** Dual Sinks, Separate Tub & Shower  
**Rooms:** Laundry, Storage Room  
**Dining:** Breakfast Area, Dining/Living Room, Eat-In Kitchen, Florida/Dining Combination

**Additional Information**

<b>Pets:</b> Yes	<b>Cable Avail:</b> Yes
<b>Interior:</b> Built-Ins, Closet Cabinetry, Custom Mirrors, Elevator, Foyer Entry, Laundry Tub, Split Bedroom, Walk-In Closets	
<b>Equip/App:</b> Cooktop, Dishwasher, Disposal, Dryer, Microwave, Refrigerator, Smoke Detector, Washer	
<b>Windows:</b> Verticals	<b>Sprinkler:</b> Auto Sprinkler
<b>Exterior Feat:</b> Awnings, Wrap-Around Balcony	
<b>Subdivision:</b> Golf Course Community, Management On Site, Sidewalks	
<b>Maint Includes:</b> Cable Tv, Common Area, Elevator, Maintenance Incl Bldg Exterior, Maintenance Incl Security, Maintenance Incl Trash, Insurance, Legal/Accounting, Manager, Parking, Pest Control Interior, Pool Service, Reserve Fund, Roof Repairs, Security, Sewer, Trash Removal, Water	
<b>Heating:</b> Central Heat	
<b>Cooling:</b> Central Cooling	
<b>Water:</b> Public Water	<b>Sewer:</b> Sewer
<b>Roof:</b> Other Roof	

Restrictions: Assoc Approval Required, No Lease

Condo

Building #:

Unit Floor: 7

Total Floors: 12

# Bldg Units: 45

Security: Doorman, Guard At Gate

Amenities: Bike Storage, Bike/Jog Path, Fitness Center, Extra Storage, Golf, Golf Equity Available, Management On Site, Trash Chute

Complex Name: LANDS OF THE PRESIDENT

Govern Bodies: Condominium

Financial Information

Taxes: \$9,268/2023

Tax Info:

Terms: Cash, Conventional

Assumable: No

Type Assoc: /\$1,619/Monthly

Mbr Req/Fee: No

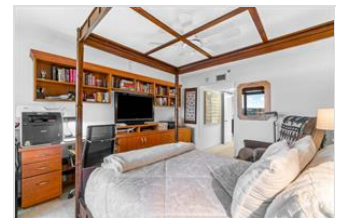
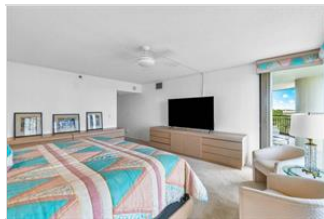
Customer Full

04/08/2024 4:23:19 PM

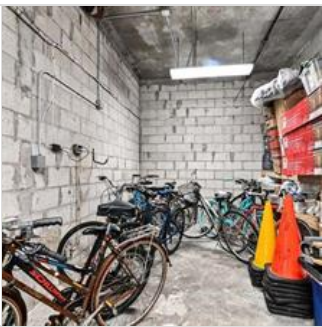
Photos

MLS #: R10968852

List Price: \$699,000







*The Information is deemed to be reliable, but is not guaranteed. ©2024 Beaches MLS, Inc. Listing information is provided for consumer personal, non-commercial use, solely to identify potential properties for potential purchase; all other use is strictly prohibited and may violate relevant federal and state law. **Accessibility Issues?** We are committed to providing an accessible website. If you have difficulty accessing content or notice any accessibility problems, please contact our ADA hotline at **844-209-0134** and we will strive to provide the information you need in the format you require.*

---

Wim Berndsen | Berndsen & Berndsen Realty | BerndsenBerndsenRealty@gmail.com | Cell: 352-613-6298